

Serving the Region's Air Transportation Needs



Brian Ryks, Executive Director and CEO
[Metropolitan Airports Commission](#)



1



Metropolitan
Airports
Commission



The Metropolitan Airports Commission

- Public corporation created in 1943
- Legislated purpose:
 - Promote efficient, safe, economical air commerce
 - Develop the full potentialities of the metropolitan area as an aviation center
 - Minimize the environmental impact from air transportation and the public's exposure to noise and safety hazards around airports
- Can own airports within 35 miles of downtown Minneapolis and St. Paul
- Funded by rents and fees paid by airport users, not by general tax dollars



Our Mission

Connecting you to your world

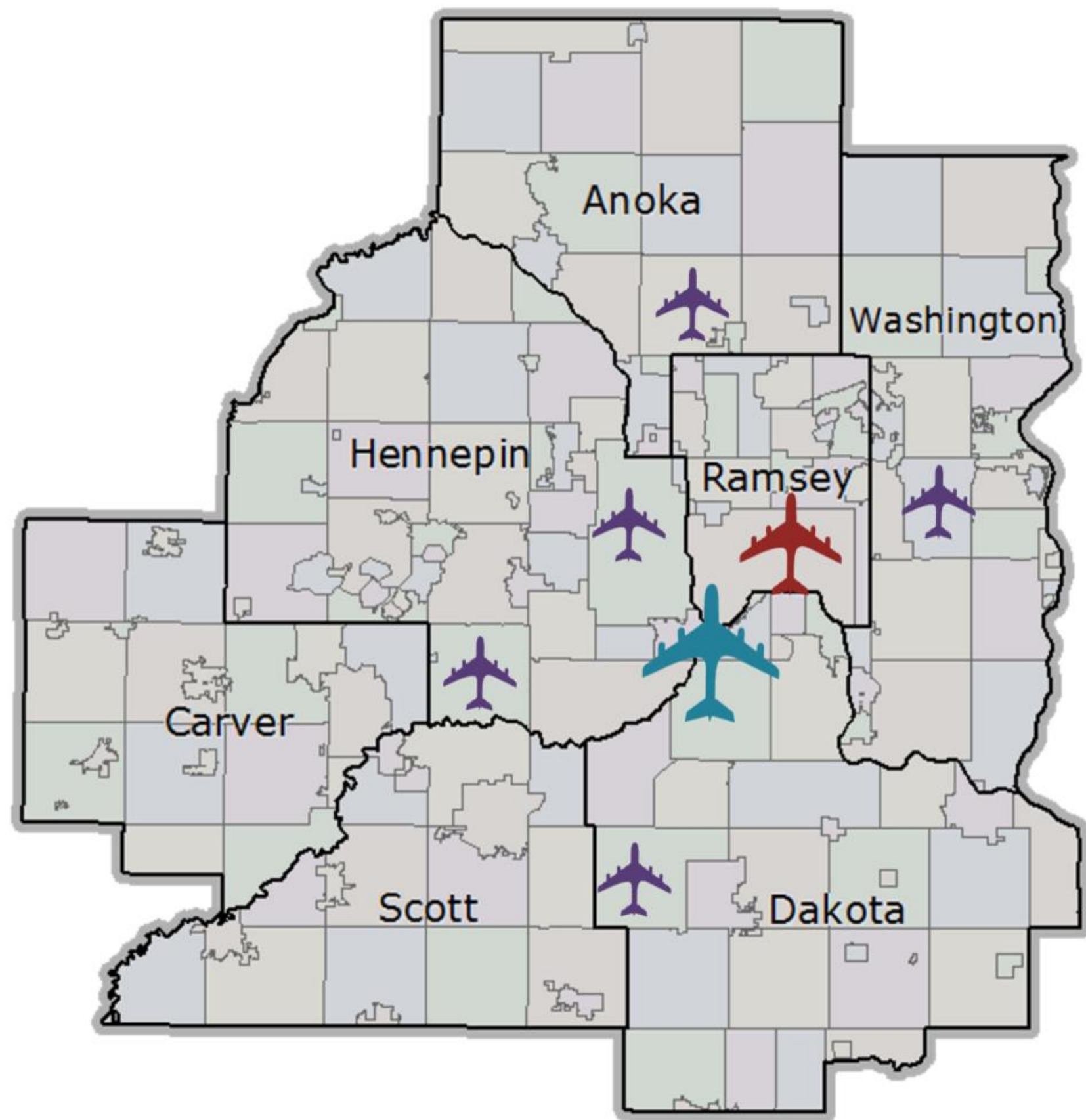


Our Vision

Providing your best airport experience

The MAC Airport System

The MAC owns and operates seven airports, providing convenient access to air transportation for all parts of the Twin Cities metropolitan area.



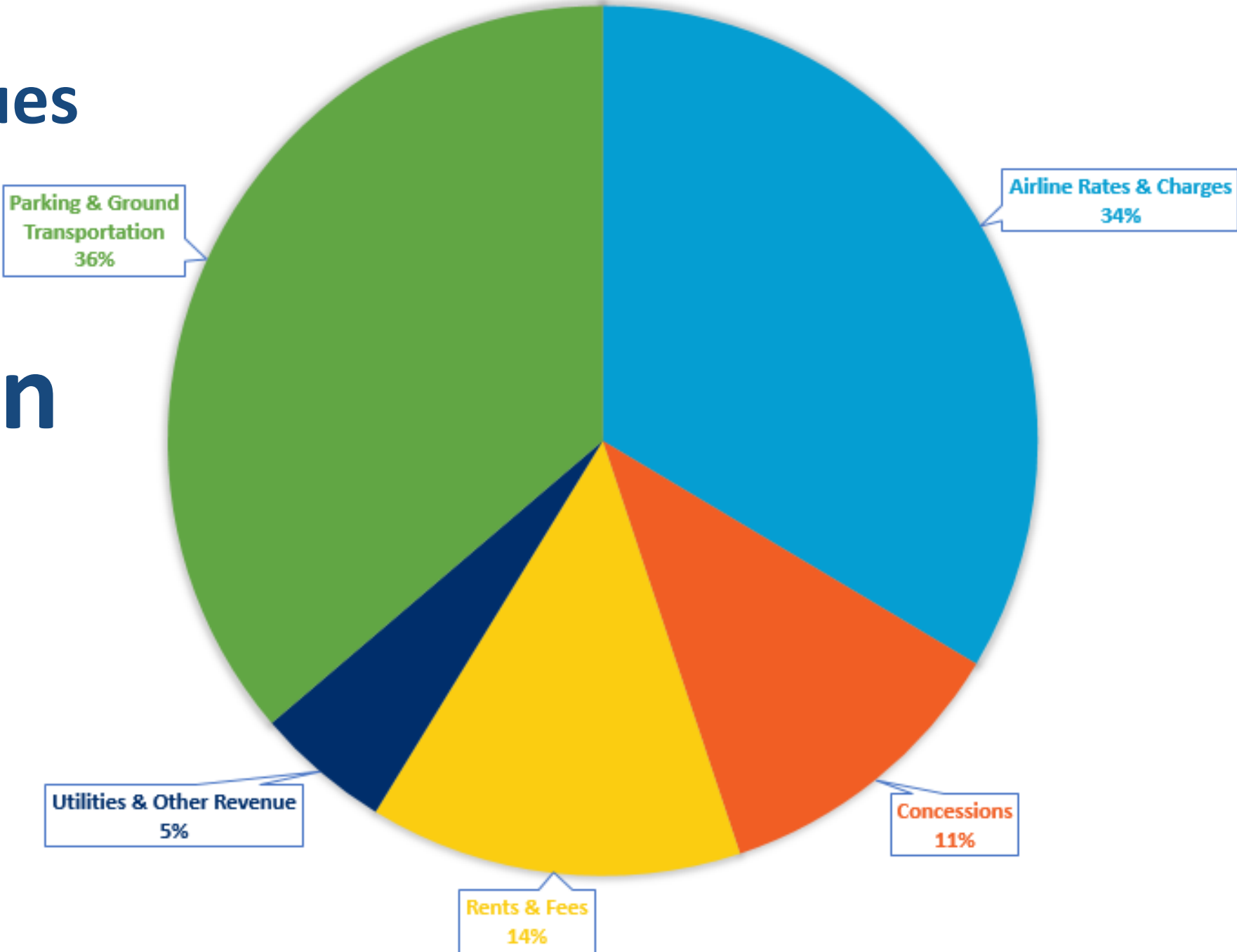


- 650 employees
- Operates much like a city, with its own:
 - Police
 - Fire
 - 9-1-1 dispatch
 - Building inspection
 - Planning
 - Maintenance Department



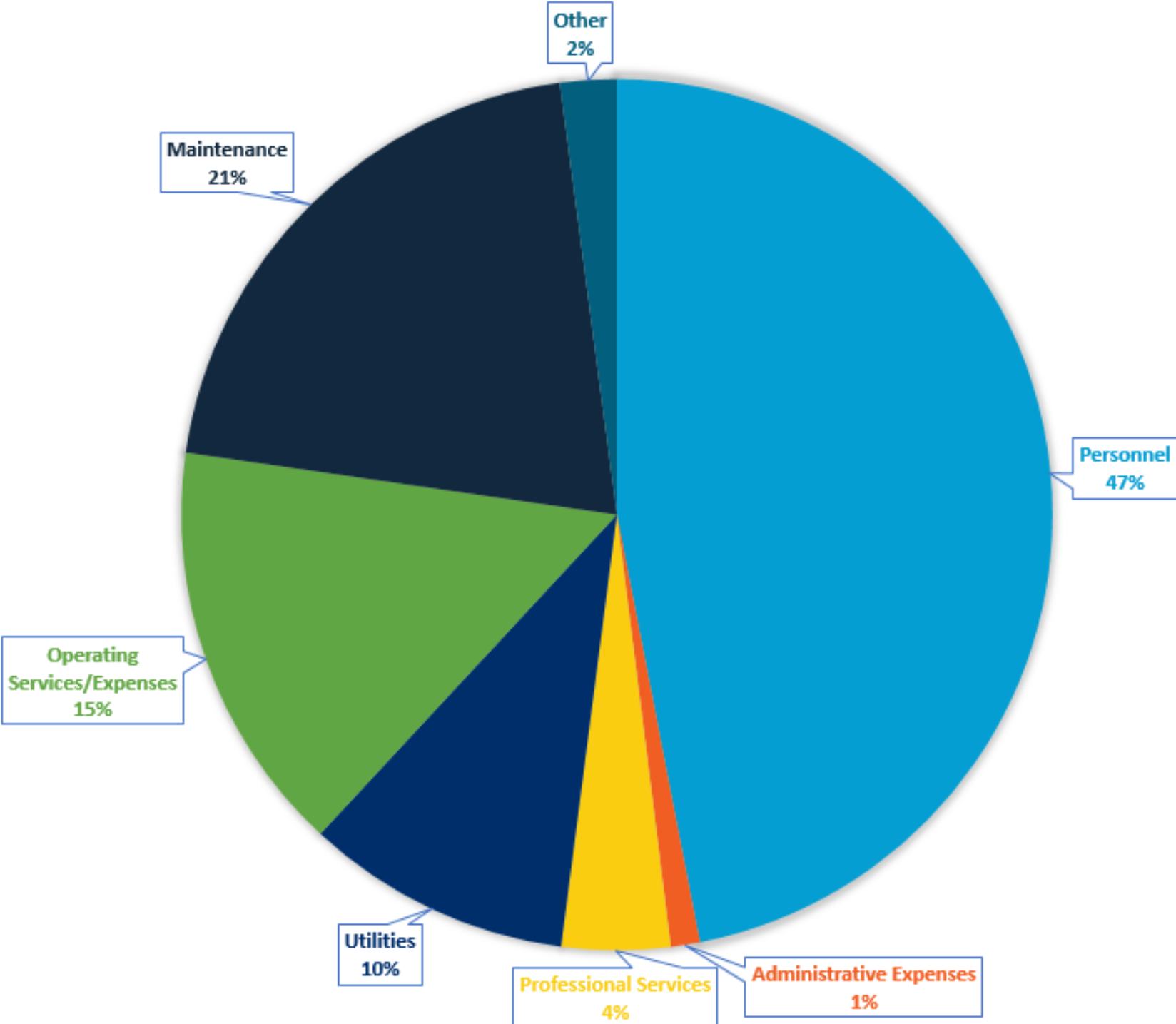
Budgeted 2019 Operating Revenues

\$381 Million



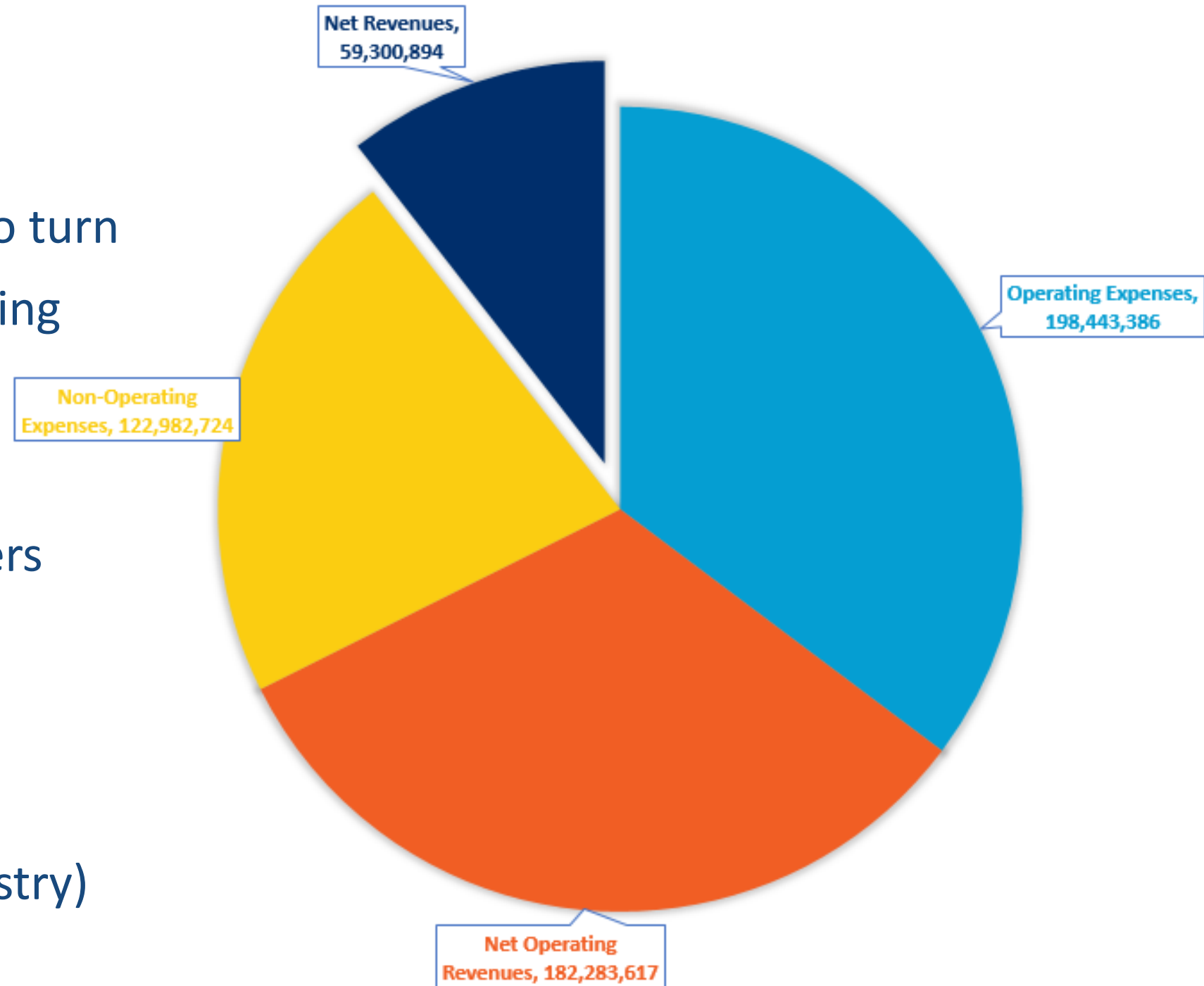
Budgeted 2019 Operating Expenses

\$198 Million



Budgeted 2019 Operational Funding (\$)

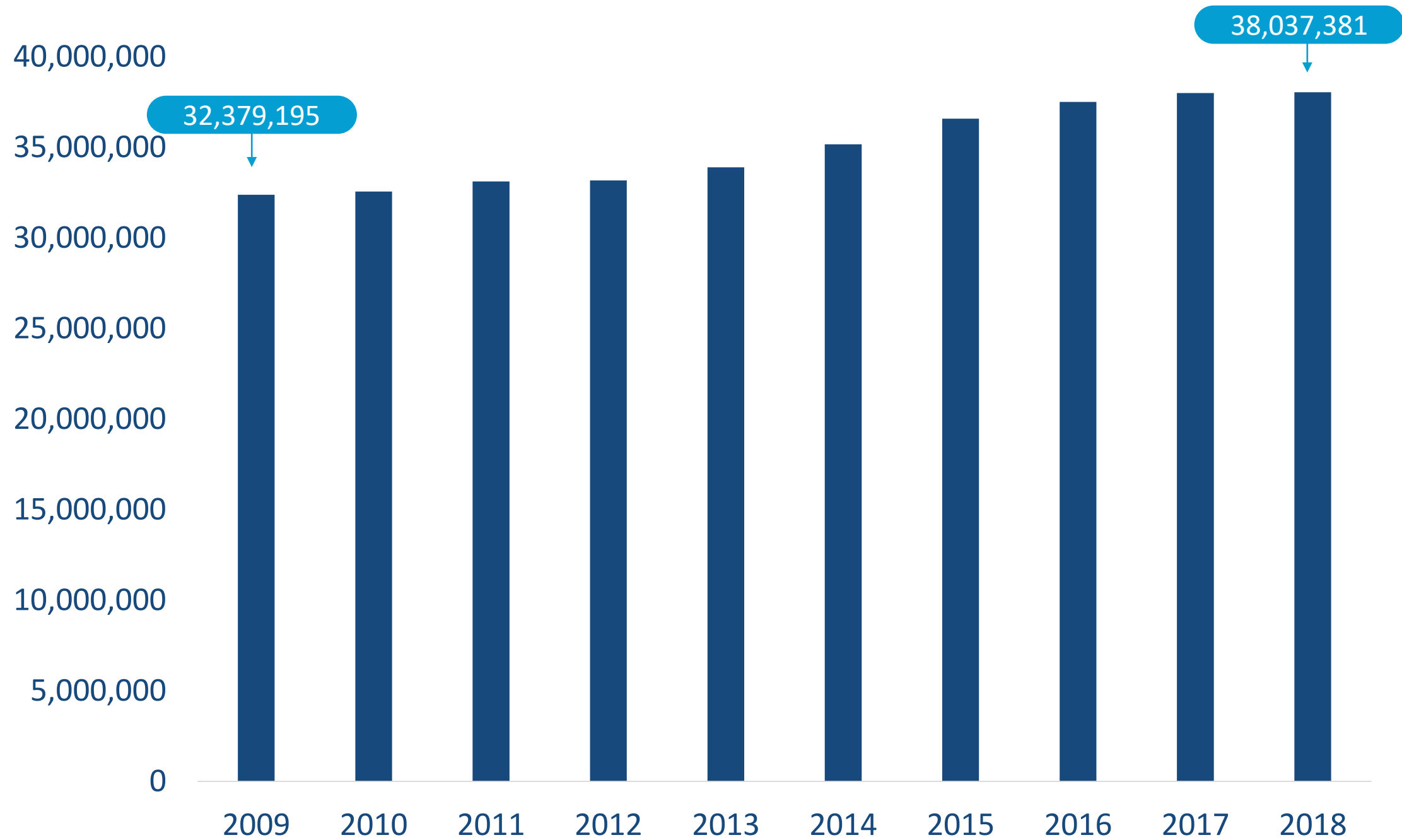
- Conservative forecasting: nowhere to turn except reserves or short-term financing
- Financial model predicated only on originating and destination passengers
- Maintain six-month reserve
- AA- bond rating (best in airport industry)





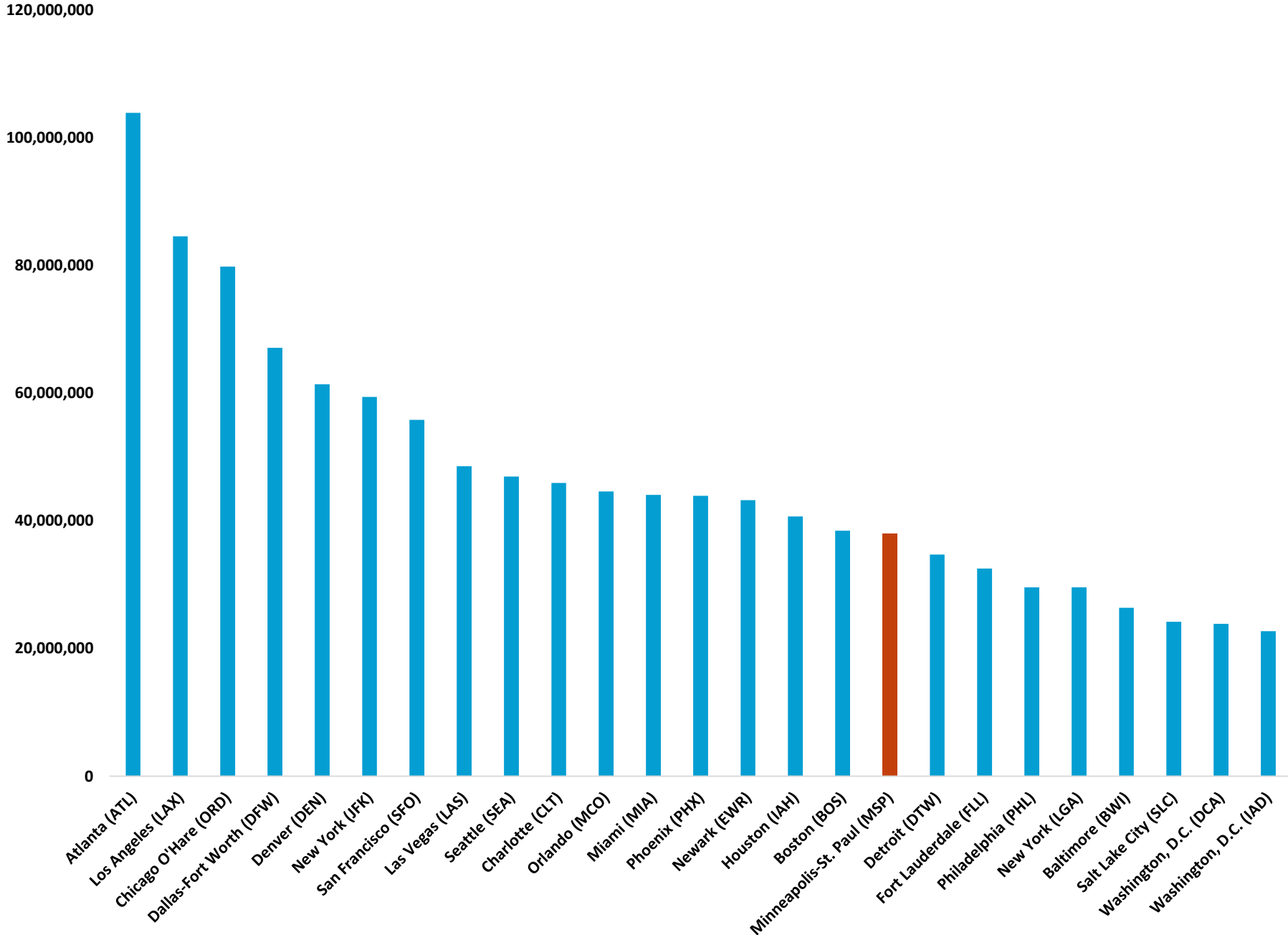
Minneapolis – St. Paul International Airport

MSP Passenger Levels

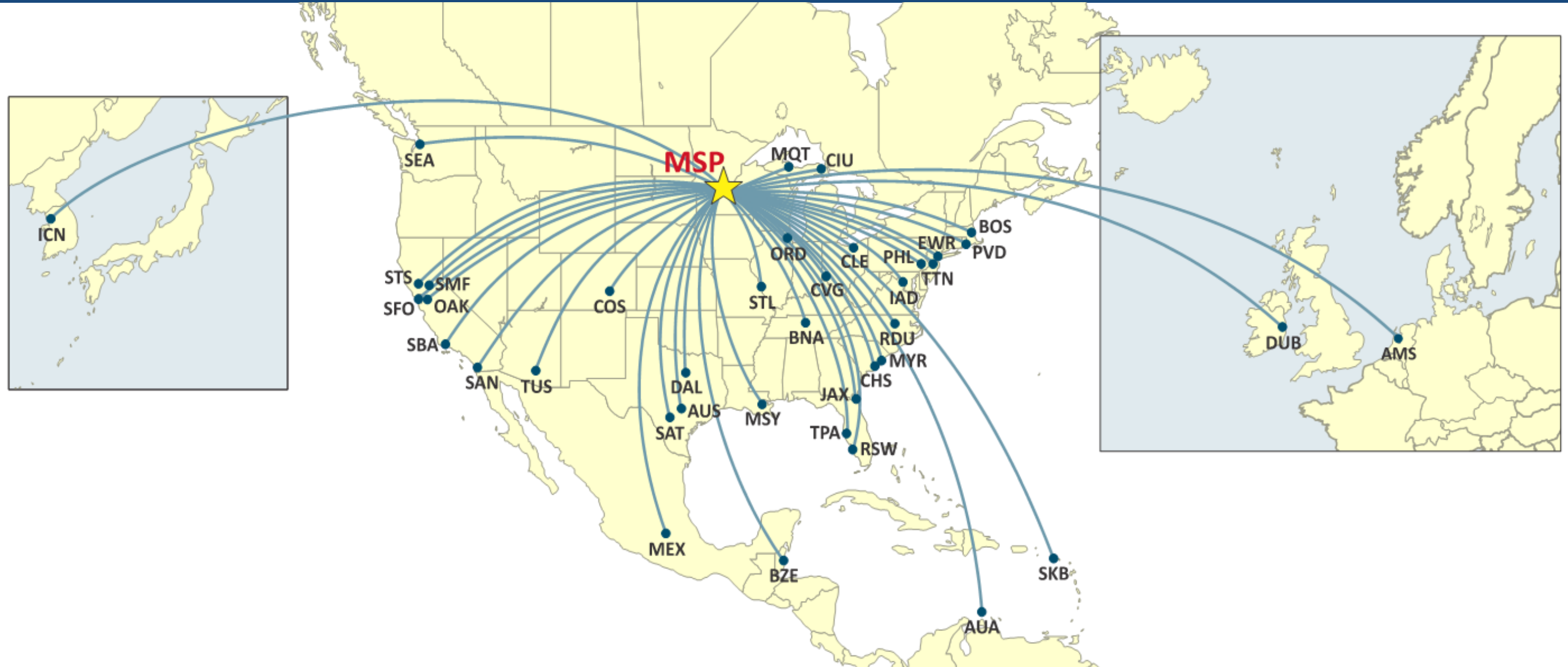


Top 25 U.S. Airport Passenger Rankings

MSP is the nation's 17th busiest airport for passengers served.



Air Service Added in 2017-2019



Eleven airlines added a total of 45 additional routes from MSP since January 1, 2017. MSP now enjoys competitive air service on 57 of its total 167 direct routes.

In January, Sun Country announced a new round of expansion, to eight large cities.



With the addition of these eight cities, Sun Country Airlines will serve 49 destinations from MSP International Airport in 2019.

Making Connections Through MSP



Sun Country's strategy includes using MSP as a hub for connections.

On a roll for new international service



Mexico City!



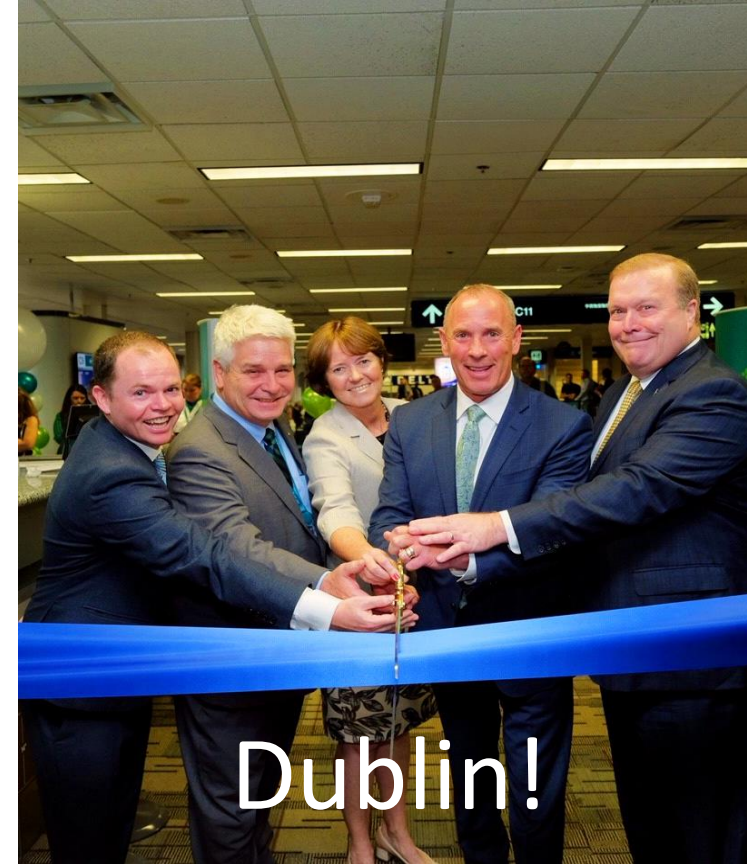
- Launched non-stop service June 8
- Daily service on Airbus 319 aircraft
- Through Delta's agreement with AeroMexico, passengers can connect to more than 40 other destinations in Mexico and Latin America



- First ever direct service from MSP to Seoul, South Korea began April 1
- Through Delta's joint venture with Korean Air, travelers can connect to 80+ destinations in Asia
- Flights occur on Boeing 777 aircraft with all new cabins



Seoul!



Dublin!



- Aer Lingus launched non-stop service effective July 1
- Daily service on Boeing 757 aircraft
- From Dublin, passengers can connect to 30+ cities in Europe



- **Delta has applied to the US DOT for permission to fly non-stop between MSP and Shanghai, China.**
- **From there, travelers could connect to 70 other destinations in China through Delta's agreements with China Eastern and Shanghai Airlines.**
- **If approved, service would begin in June 2020 on an Airbus A350-900.**



Shanghai!

MSP Air Carriers

Aer Lingus 

 BOUTIQUE AIR



KLM

AIR CANADA 

 **Condor**

Southwest 

Air Choice **One**

 **DELTA**

spirit™

AIRFRANCE 

FRONTIER
AIRLINES

Alaska
AIRLINES

ICELANDAIR 

 sun country airlines.

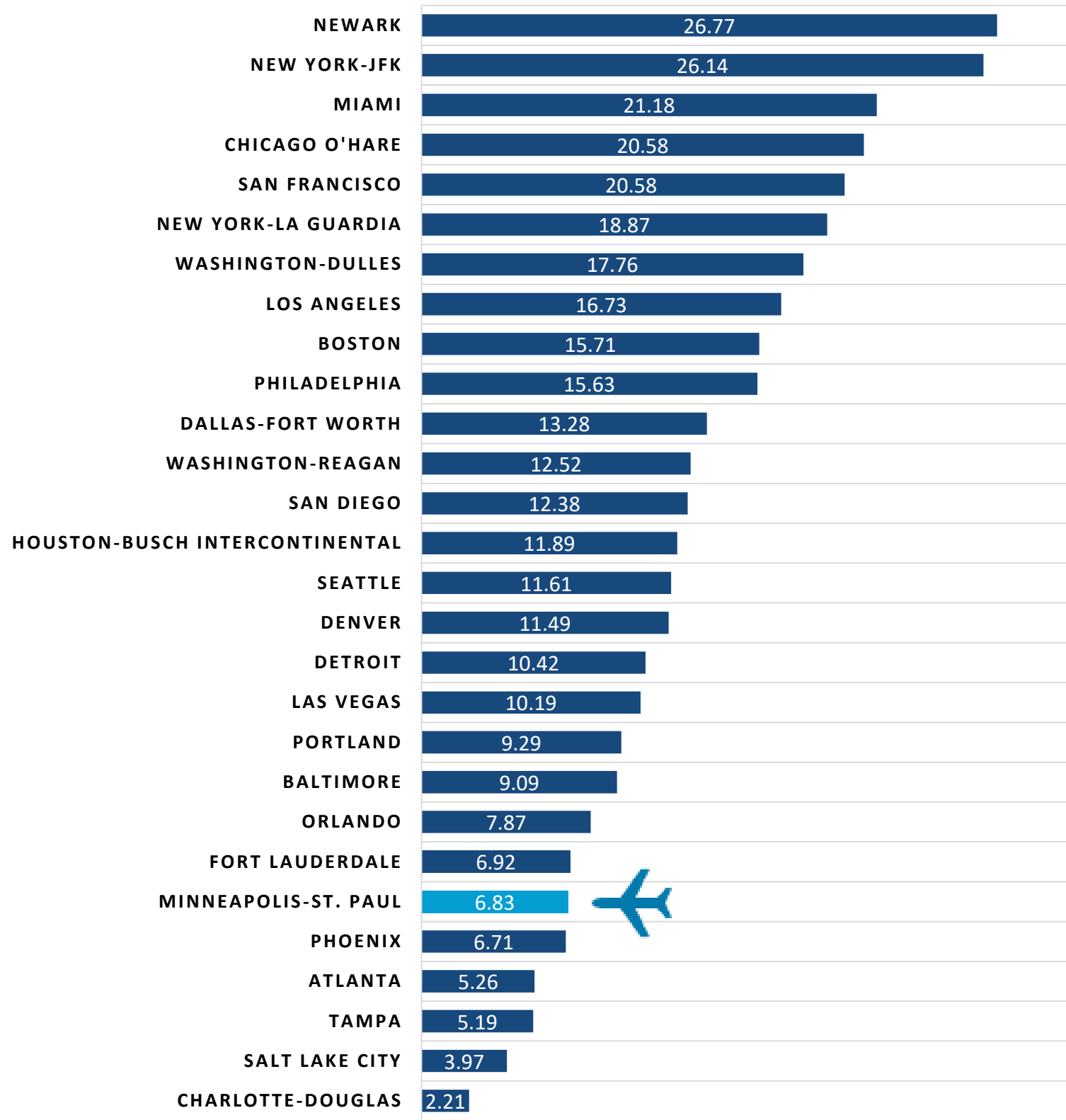
American Airlines 

jetBlue

UNITED 



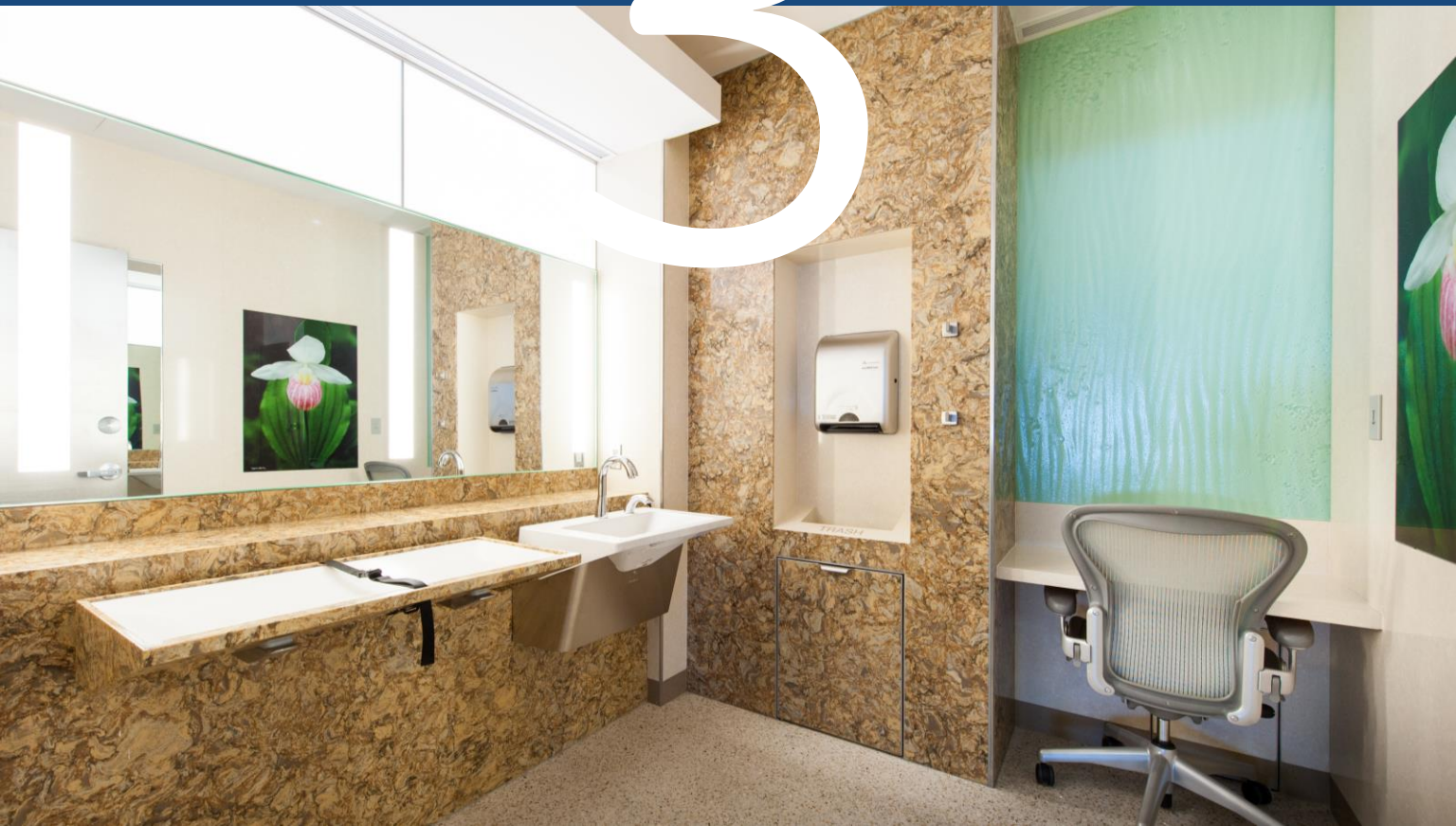
2019 Airline Cost Per Enplaned Passenger (\$)





- Andersen Corporation AW
- Ameriprise Financial
- Cargill
- Uponor
- Siteimprove
- smiths medical bringing technology to life
- BMO Harris Bank
- C.H. ROBINSON
- BEST BUY
- accenture
- ECOLAB
- General Mills
- GREAT RIVER ENERGY
- LAND O'LAKES, INC.
- COEN+PARTNERS CONTEXTUAL MINIMALISM
- Mortenson construction
- POLARIS
- MINNESOTA VIKINGS
- MAYO CLINIC
- Medtronic
- ETHOR COMPANIES
- THOR COMPANIES
- TARGET
- SUPERVALU
- Cludo
- 3M
- THOMSON REUTERS
- WELLS FARGO
- Coloplast
- QUEUE-IT
- Xcel Energy
- usbank
- THRIVENT FINANCIAL
- UNITEDHEALTH GROUP

3



MSP Reimagined

- InterContinental Hotel opened July 30, 2018
- Developed and managed by Graves Hospitality
- Connects directly to Terminal 1 via skyway
- 30,000 square feet of meeting and event space will help attract more conferences to Minnesota





IN FINAL YEAR
INTRODUCING
80 NEW
RESTAURANTS
& SHOPS

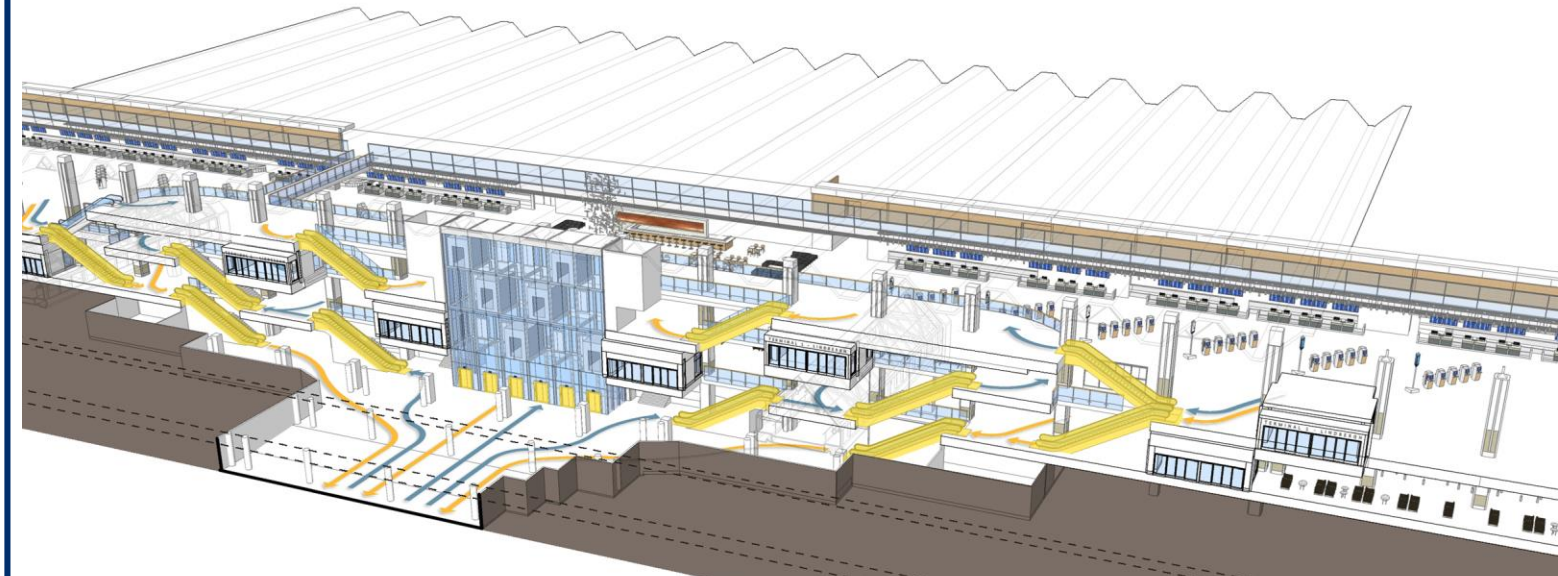




Terminal 1 ticketing and baggage claim levels will be completely remodeled by 2022.

Improved Flow Between Levels at Terminal 1

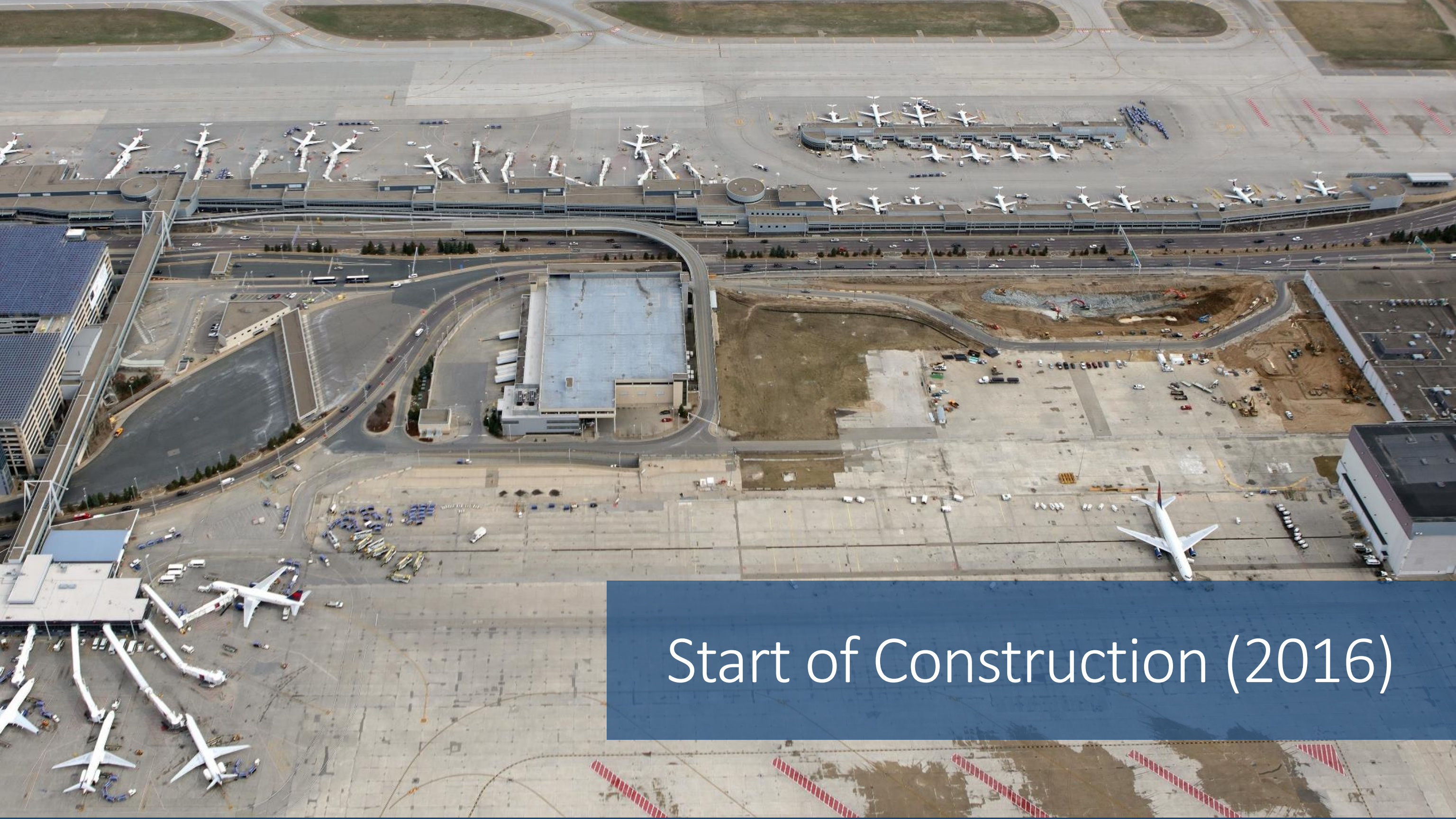
- Pushing front wall of Terminal 1 out 16 feet to provide more space for airline check-in, security and bag claim functions
- Elevators and escalators linearly aligned to provide more efficient movement
- Improved sightlines and daylighting
- Centrally located services: food, retail, information desks and restrooms





Silver Parking Ramp

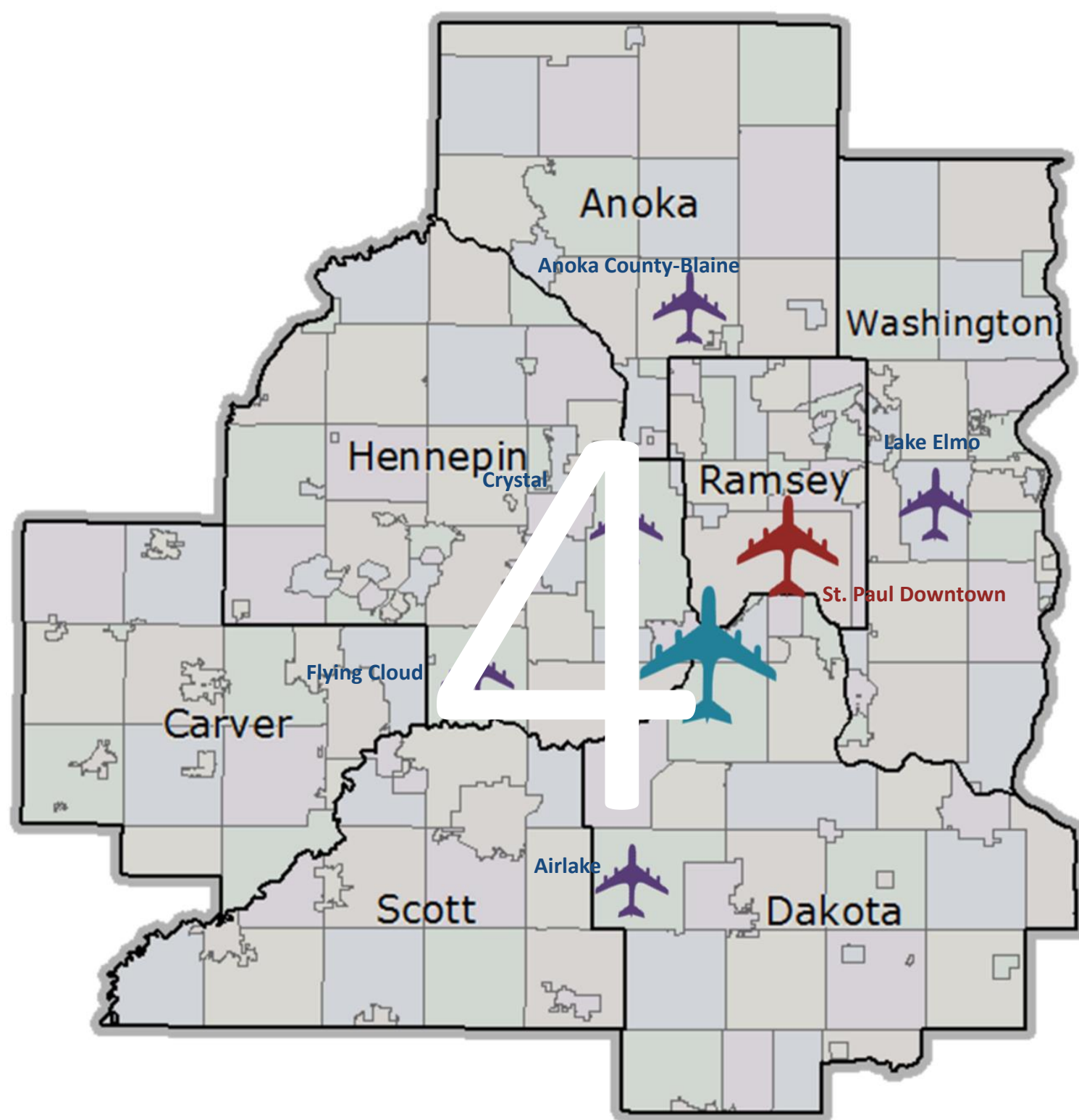
Construction of a 5,000-space ramp with improved auto rental and transit facilities is on schedule for 2020 completion.



Start of Construction (2016)



June 2019



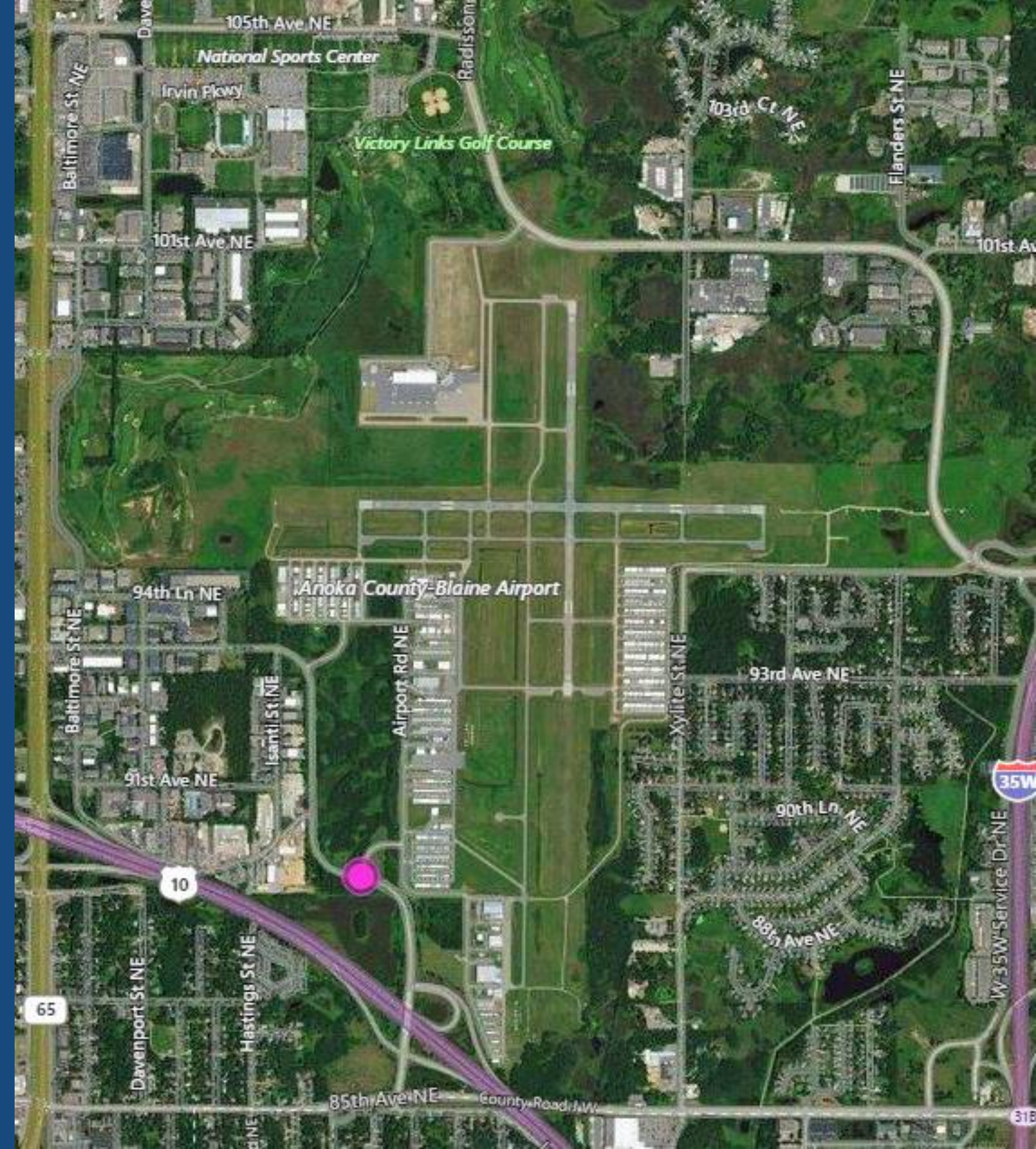
Reliever Airports

Anoka County-Blaine

- 75,000 landings and takeoffs annually
- 381 based aircraft

The airport has:

- Two runways, the longest of which is 5,000'
- An instrument approach
- A contract control tower

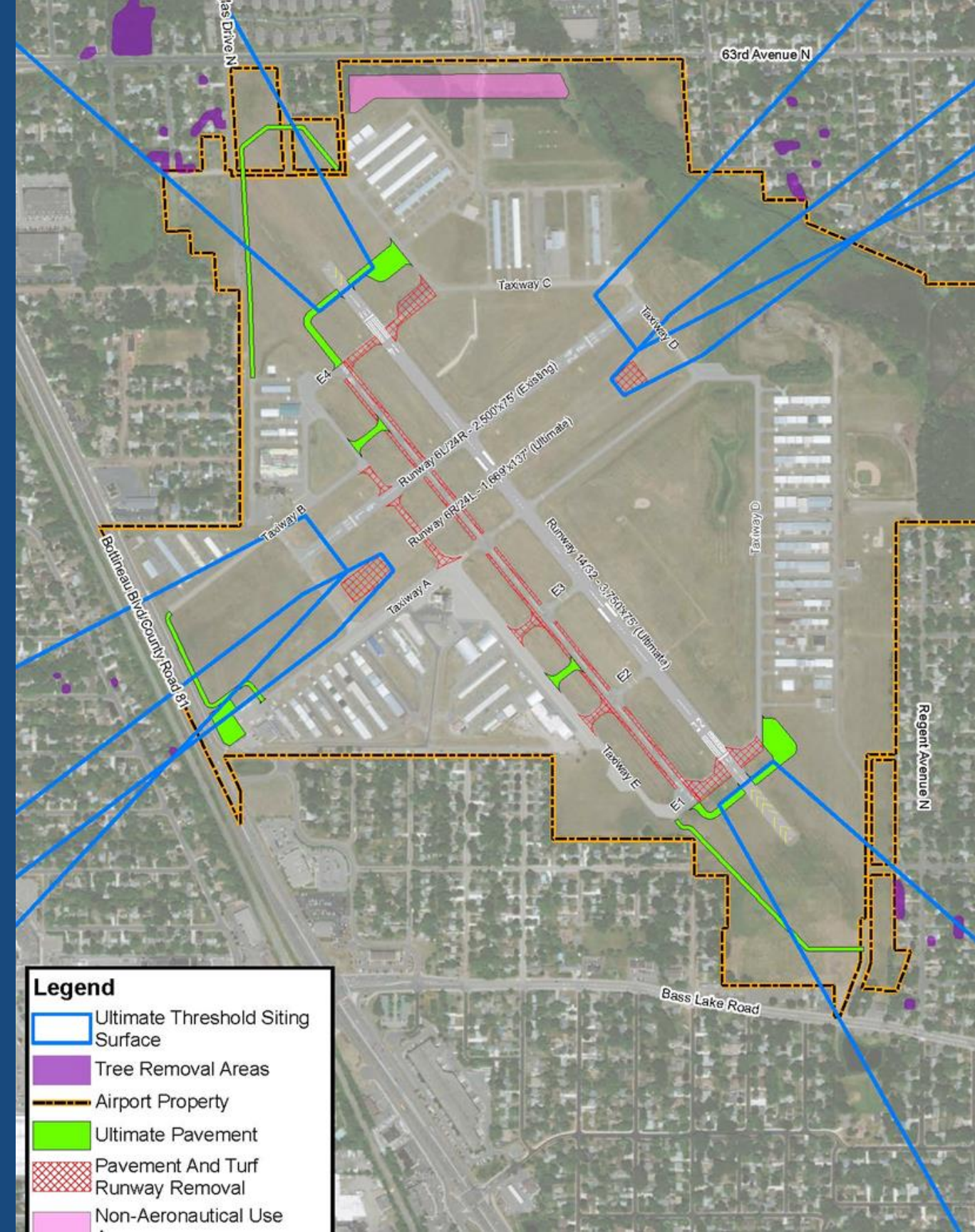


Crystal Airport

- 38,100 landings and takeoffs annually
- 168 based aircraft

Planned improvements include:

- Turning Runway 14R-32L into a taxiway
- Converting parts of Runway 14L-32R blast pads into usable runway
- Shifting the RPZ onto airport property
- Shortening the turf runway



Flying Cloud Airport

- 89,000 landings and takeoffs annually
- 364 based aircraft

The airport has:

- Two parallel runways, the longest of which is 5,000', and one crosswind runway
- Both precision and non-precision approaches
- An FAA control tower

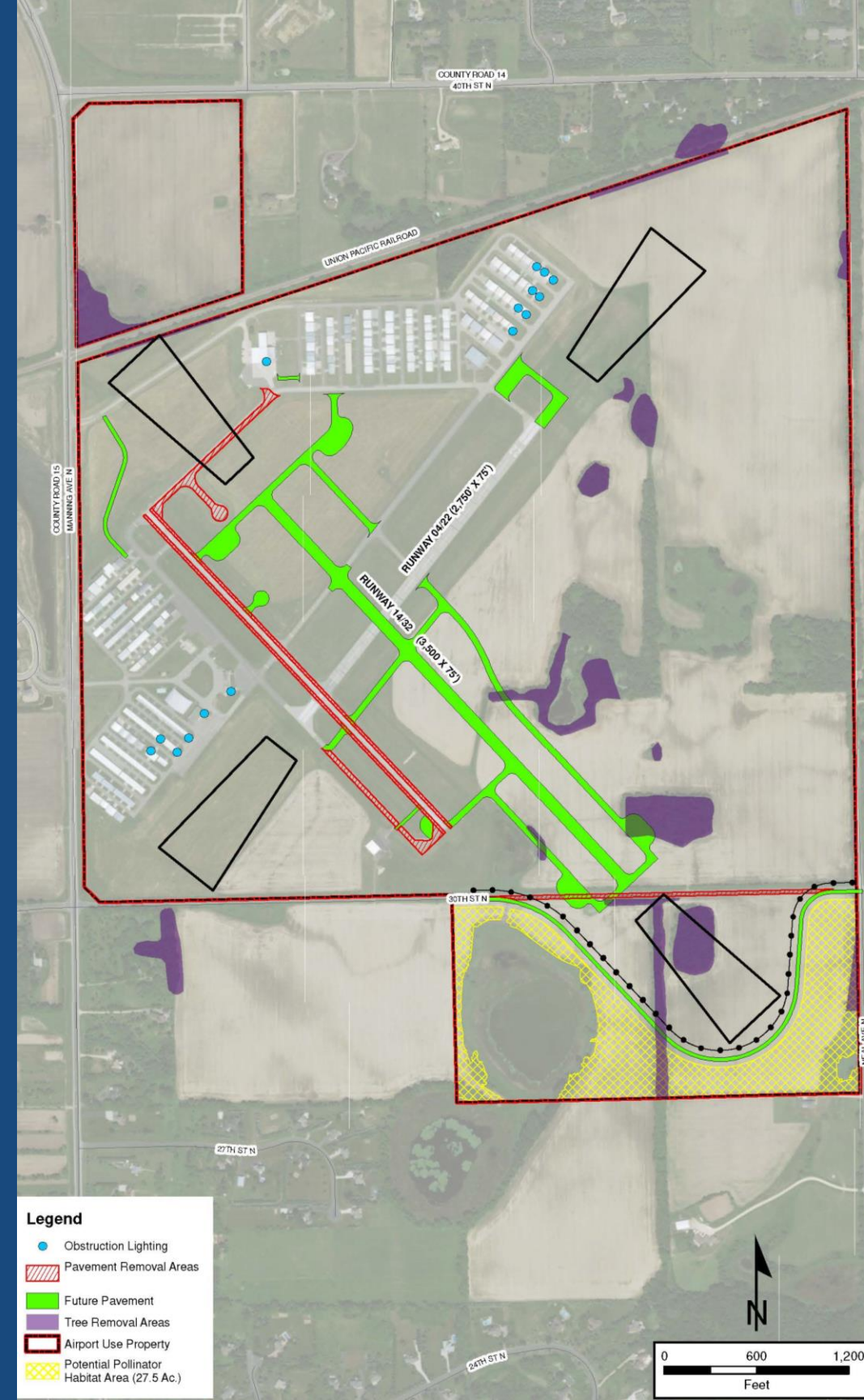


Lake Elmo Airport

- 32,000 landings and takeoffs annually
- 189 based aircraft

Planned improvements include:

- Relocate Runway 14/32 615' to the northeast and extend it to 3,500'
- Convert existing Runway 14/32 to a taxiway
- Reconstruct Runway 4/22 and extend it to 2,750'
- Realign 30th Street North around new Runway 32 RPZ
- Establish non-precision approach to Runway 14 and upgrade Runway 4 approach to RNAV

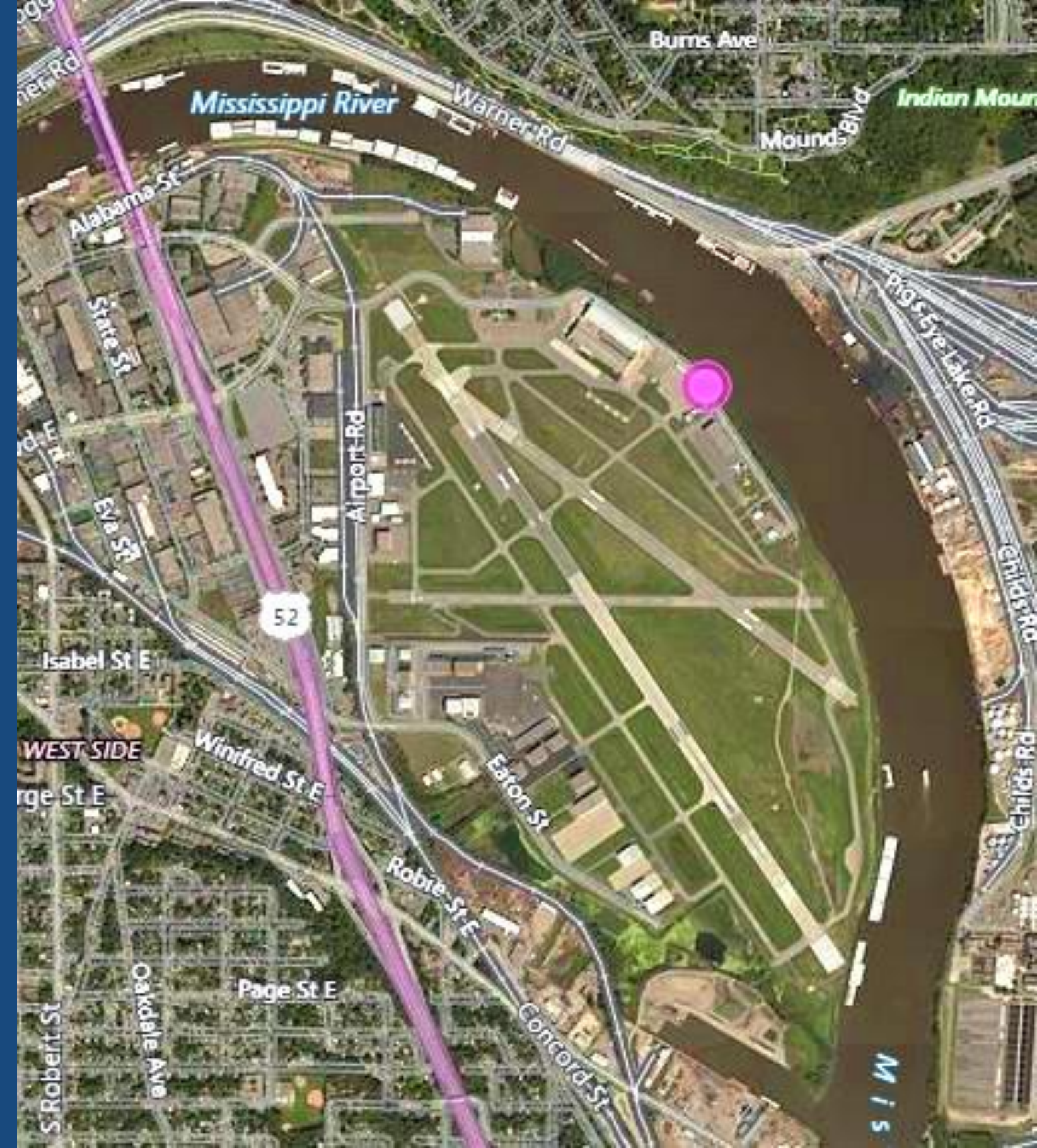


St. Paul Downtown Airport

- 40,100 landings and takeoffs annually
- 90 based aircraft

The airport has:

- Three runways, the longest of which is 6,491'
- Precision instrument approaches to runways 14 and 32, non-precision instrument approaches to Runways 14, 31 and 32, and a published precision instrument approach procedure for helicopters
- FAA control tower



5

Economic Impacts



\$15.9 Billion
Total Economic Output



\$7.1 Billion
Direct Economic Impact



86,900
Jobs



\$3.7 Billion
Employee Earnings



\$973 Million
Taxes generated for
local, state and federal
programs



\$2.5 Billion
Visitor Spending



Reliever Airports:

- \$756 million in total economic output
- 1,030 direct jobs
- \$56 million in direct wages

6

Recognizing
Excellence





Highest Recognition from Airports Council International-North America

- Best Airport Concessions Program in North America
- Best Airport Retail Program in North America
- Best New National Brand Concept in North America
- Best 'Green' Concession Concept or Practice in North America

*MSP also won the overall **Best Airport Food & Beverage Offer** for the Americas Region at the 2019 Moodie Davitt Report Airport Food and Beverage (FAB) Awards in June*



Best Airport in
North America*
2016, 2017, 2018
- Airports Council international

Most Efficient Airport
in North America*
2017, 2018, 2019
- Air Transport Research Society

* 25-40 Million Passenger Category







Thank you

MetroAirports.org MSPAairport.com



@mspairport