

A Decade of Growth

2019 Population Estimates

July 22, 2020

Committee of the Whole



Overview

- Estimates background
- The 2019 population estimates
- What's next? (Update on the 2020 Census)

Estimates background

Estimates are not forecasts!

Estimates look back to last year



Forecasts look ahead to 2040



Why we create population estimates

- Each year, the Council creates estimates for April 1 of the *previous year*
 - Process governed by [Minnesota Statutes 473.24](#)
- Official state government population estimates used to allocate:
 - Local government aid
 - Local street aid
 - Tax-base sharing under the Fiscal Disparities Act
 - Some forms of regional parks funding
- Local government and Council internal uses

The population estimates model: Key questions

1. How many *housing units* does each community have?
2. How many *households* live in these housing units?
3. How many *people* live in these households?

Estimates program overview

Characteristics

- Population estimates
 - Housing units
 - Households
 - Population
- Housing affordability estimates
 - Tenure
 - Household income relative to Area Median Income (AMI)
 - Housing costs relative to AMI

Geographies

Cities / Townships

Census tracts

TAZs

Station areas

Other geographies

The 2019 population estimates

2019 population estimates: Steady growth

- 2019 population: 3,152,564
 - Increase of ~303,000 people from 2010
 - 10.6% growth since 2010
- Components of growth
 - Two-thirds “natural growth” (births > deaths)
 - One-third migration

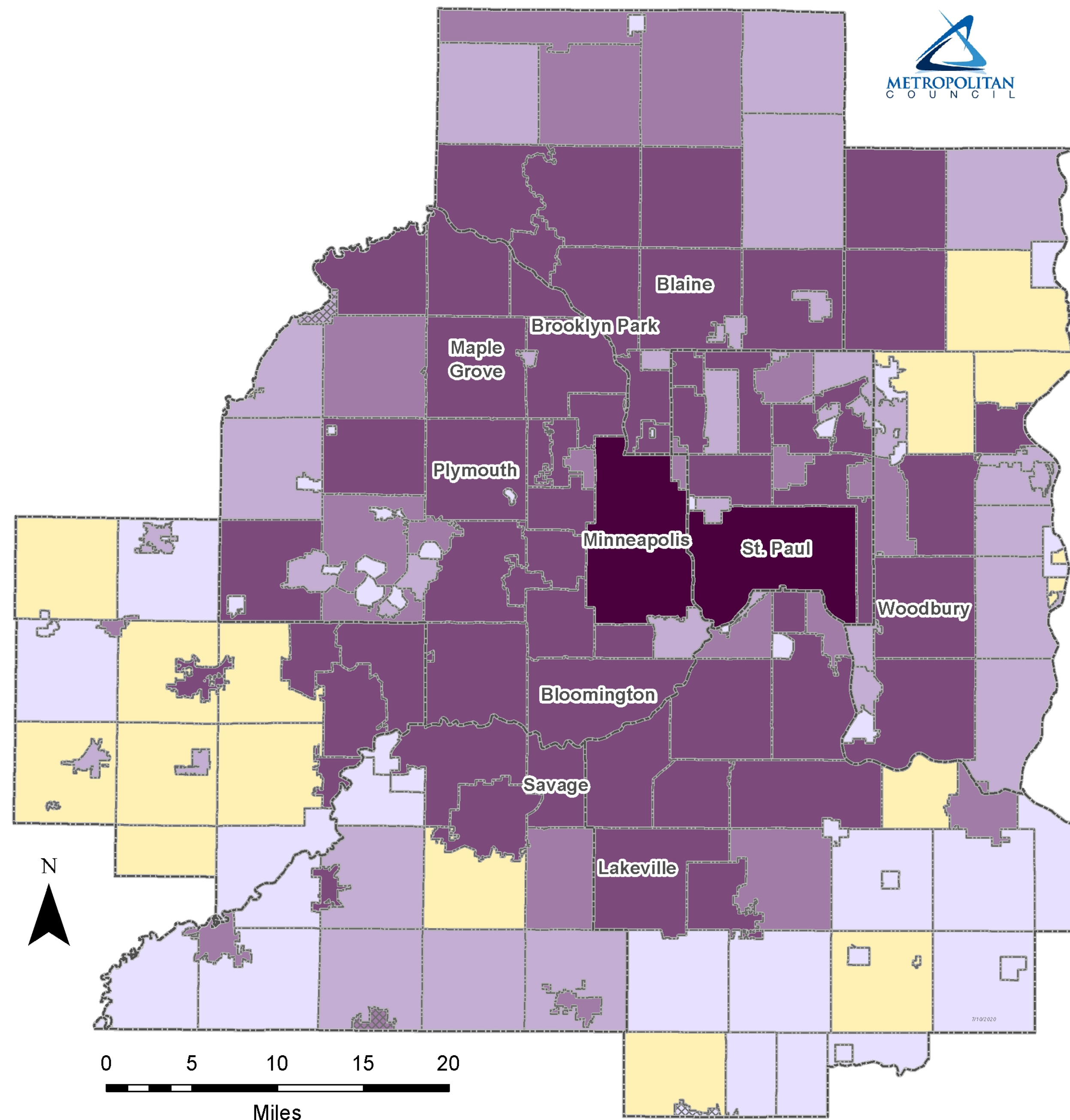
Balanced growth, 2010 to 2019



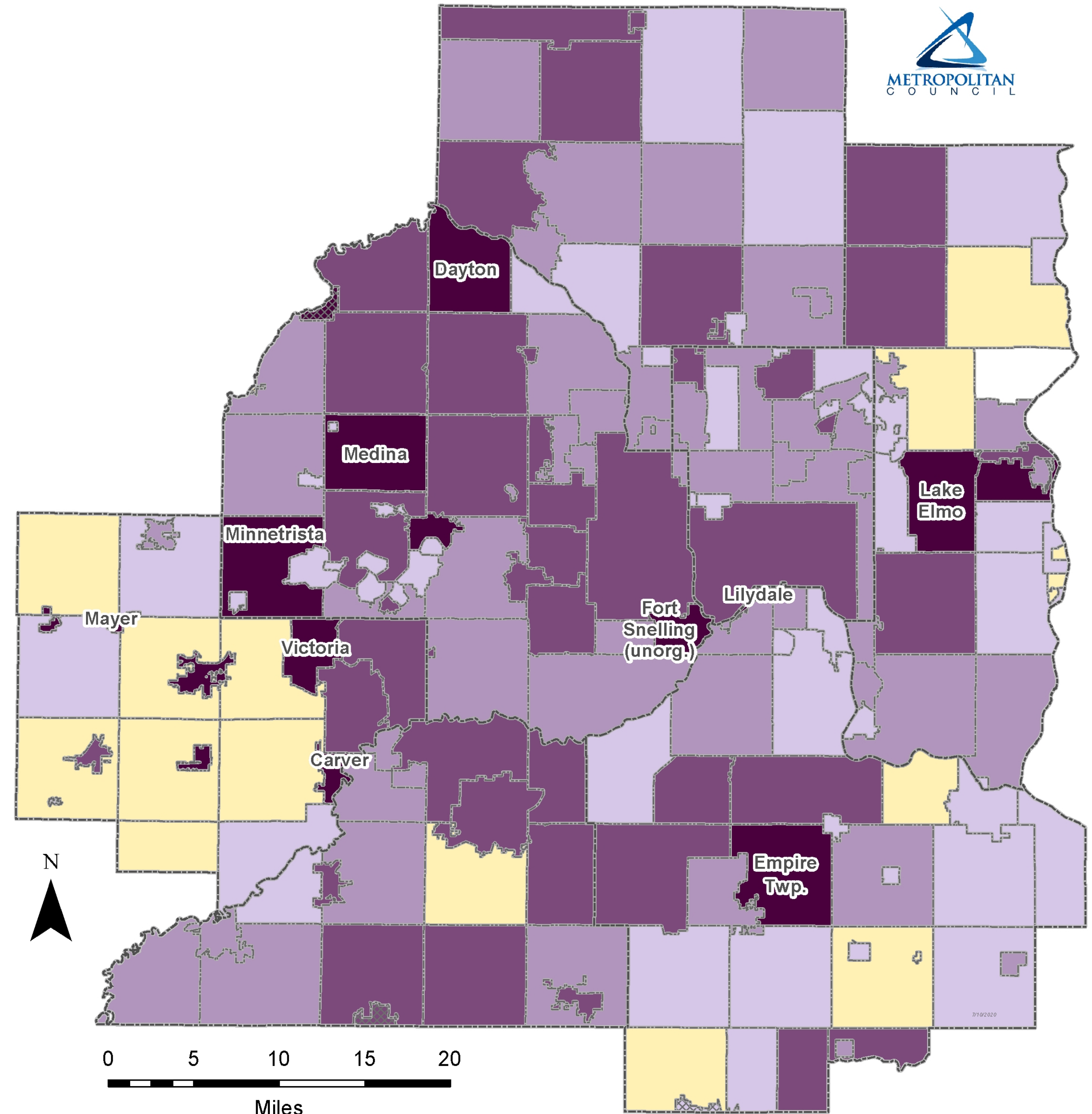
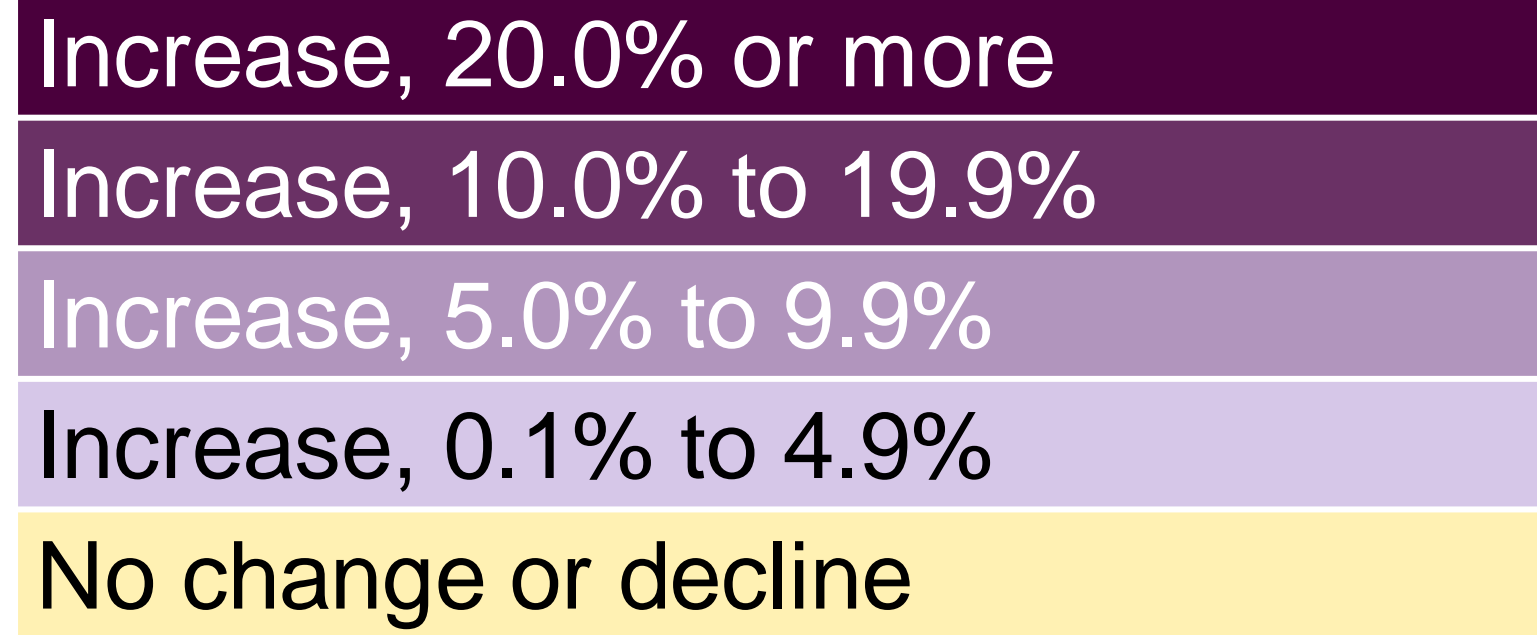
Increase of 53,307 (Minneapolis) / 30,587 (Saint Paul)
Increase, 1,000 to 10,753 (Blaine)
Increase, 500 to 999
Increase, 100 to 499
Increase, 1 to 99
No change or decline

Source: U.S. Census Bureau, 2010 Census; Metropolitan Council, 2019 Population Estimates.

Note: The ten cities with the most growth since 2010 are labeled. Cities outside the Council's jurisdiction are shown with cross-hatches.



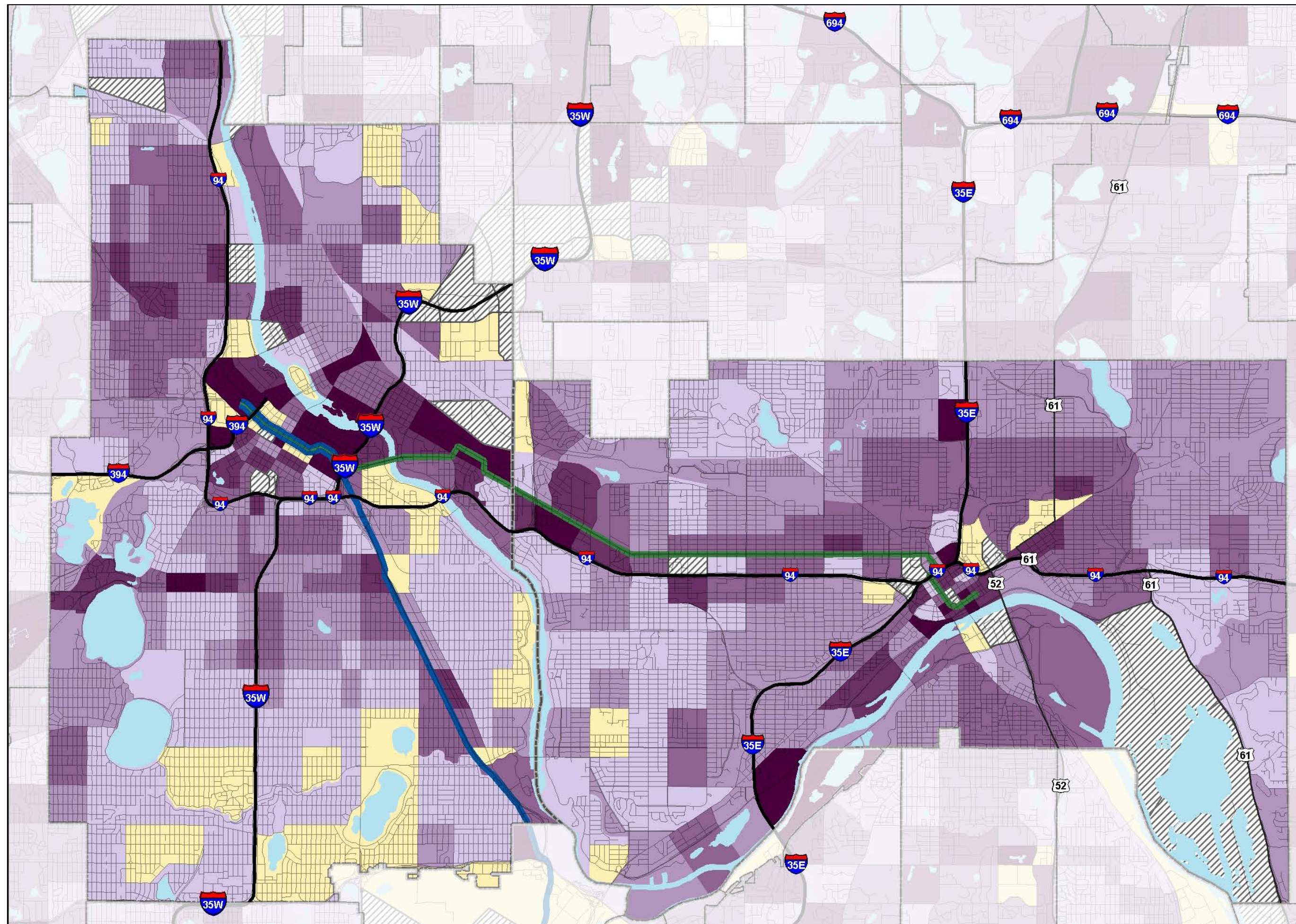
Growth rates higher in edge communities



Source: U.S. Census Bureau, 2010 Census; Metropolitan Council, 2019 Population Estimates.

Note: The ten communities with the fastest growth since 2010 are labeled. Cities outside the Council's jurisdiction are shown with cross-hatches.

MPLS & STP: Most areas grew



Increase, 100% or more

Increase, 25.0% to 99.9%

Increase, 10.0% to 24.9%

Increase, 5.0% to 9.9%

Increase, less than 5%

No change or decline

No population

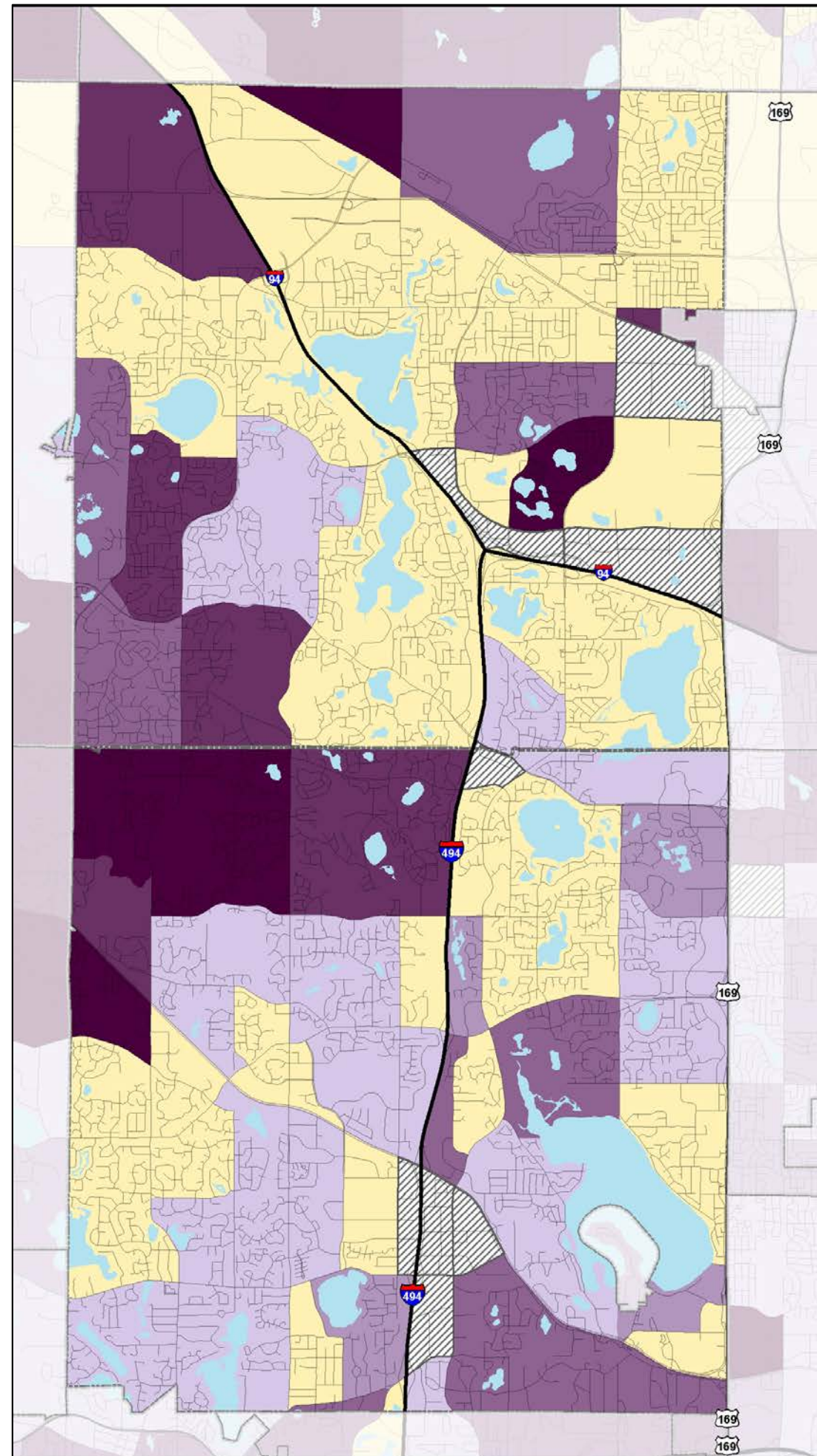
Source: U.S. Census Bureau, 2010 Census; Metropolitan Council, 2019 estimates for Transportation Analysis Zones.



METROPOLITAN
COUNCIL

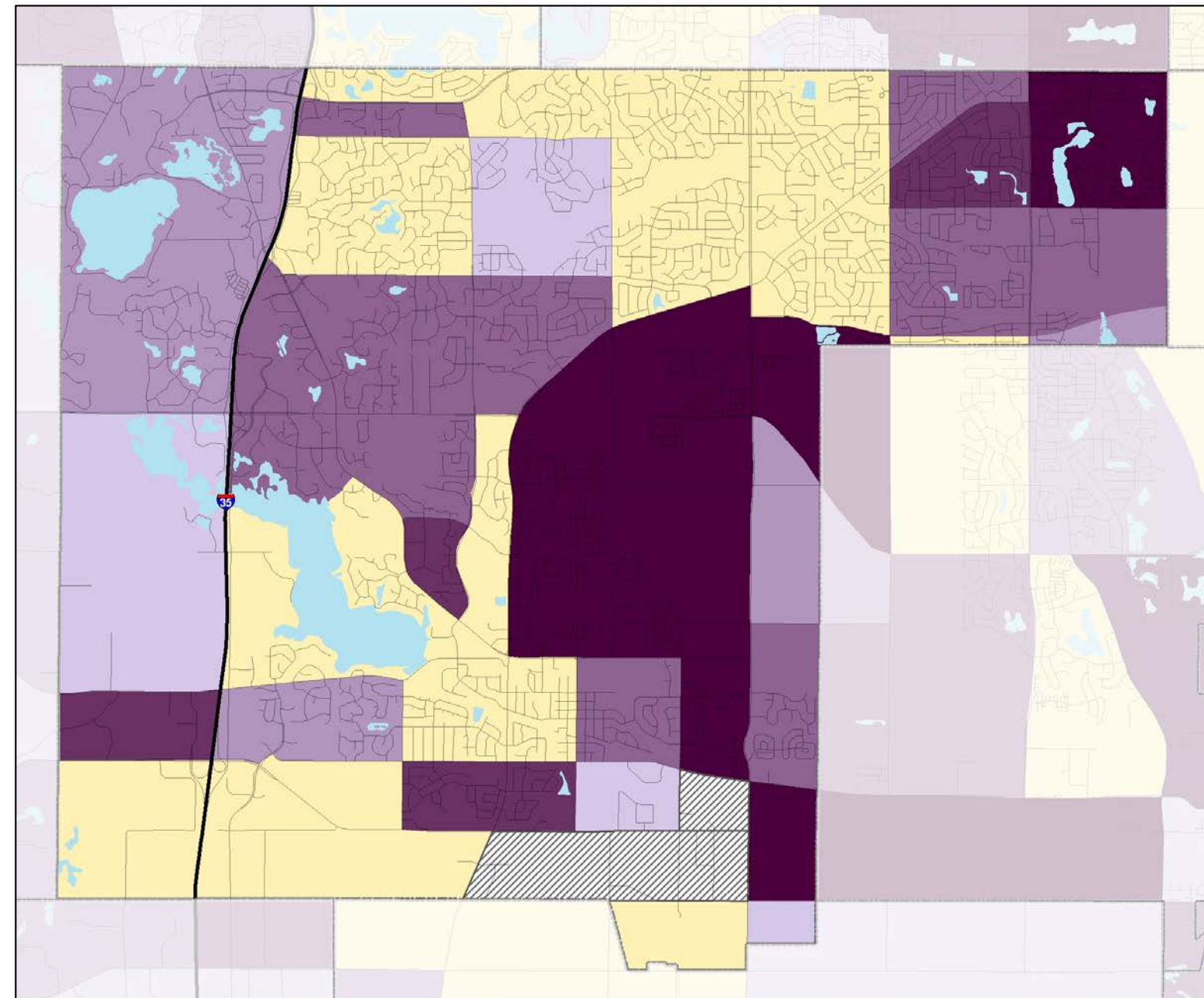
Suburban Edge: Concentrated growth

Maple Grove



Plymouth

Lakeville



Increase, 100% or more

Increase, 25.0% to 99.9%

Increase, 10.0% to 24.9%

Increase, 5.0% to 9.9%

Increase, less than 5%

No change or decline

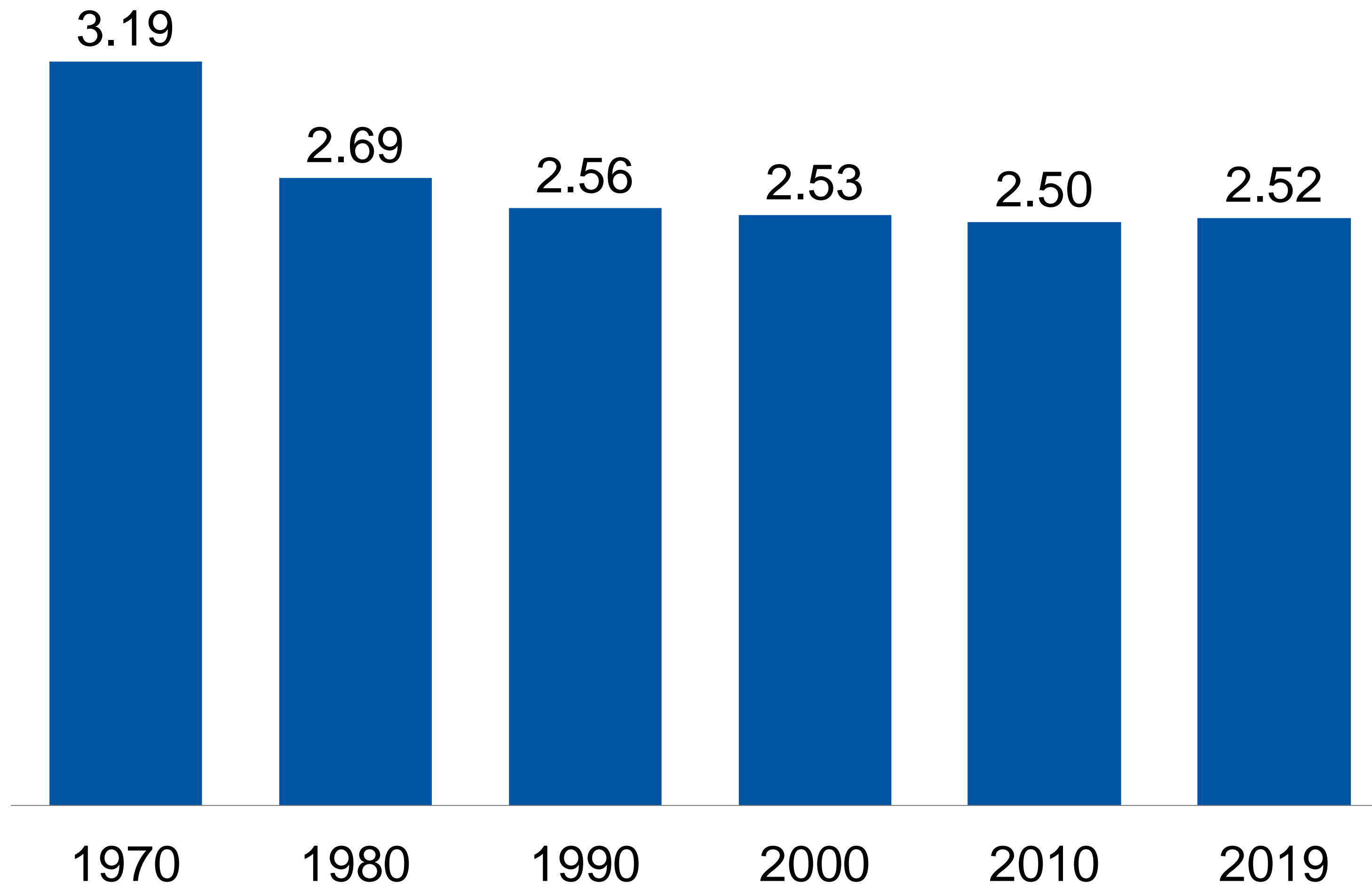
No population

Source: U.S. Census Bureau, 2010 Census; Metropolitan Council, 2019 estimates for Transportation Analysis Zones.



METROPOLITAN
COUNCIL

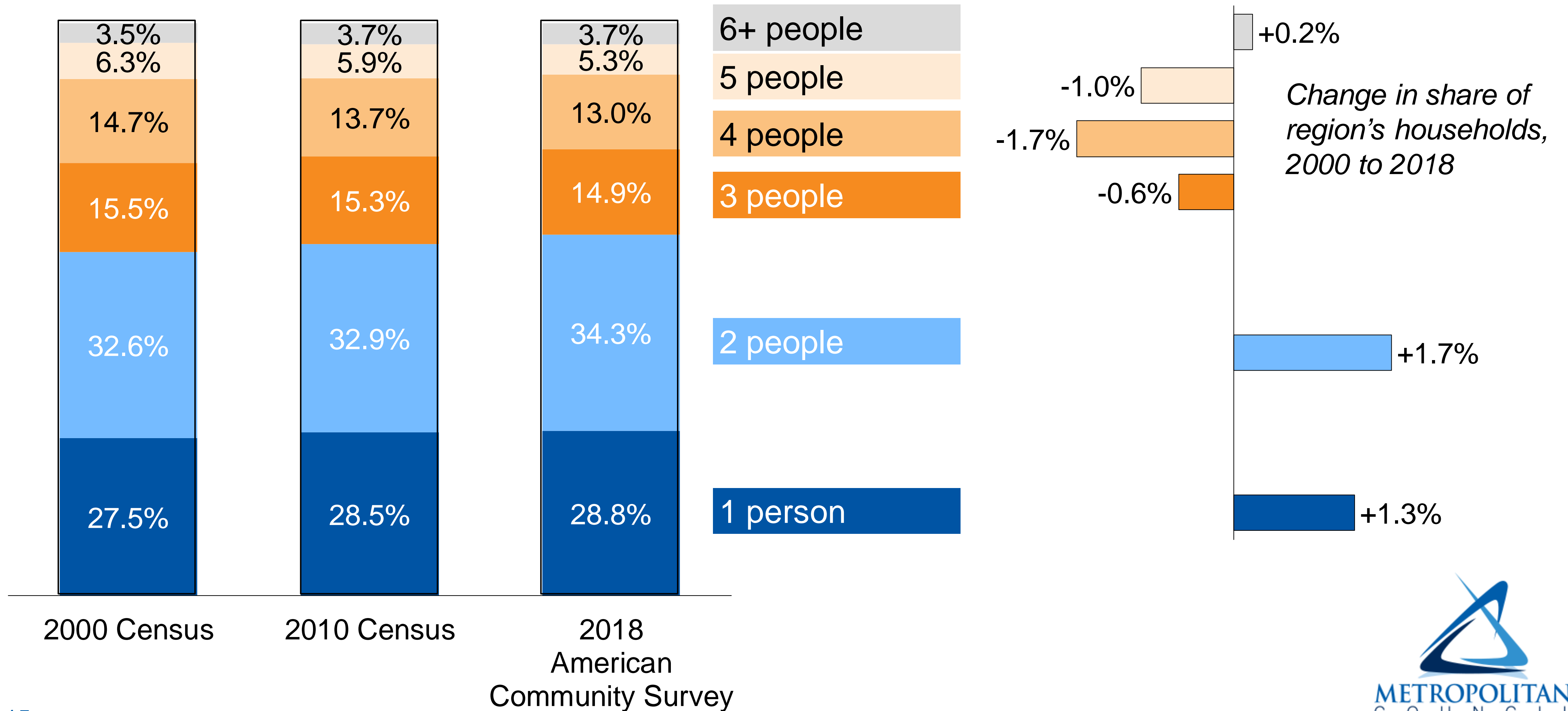
Average household size: signs of increasing



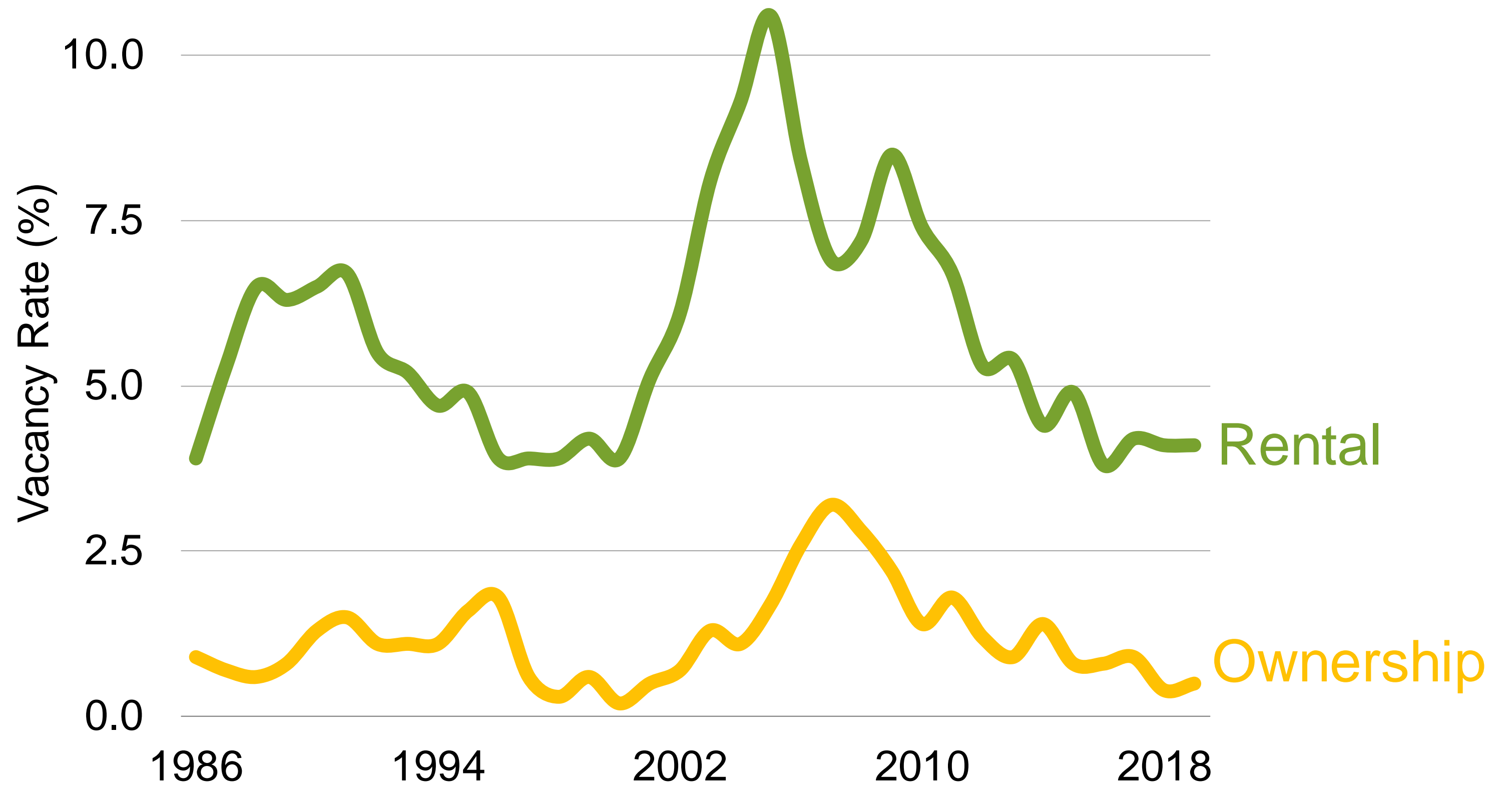
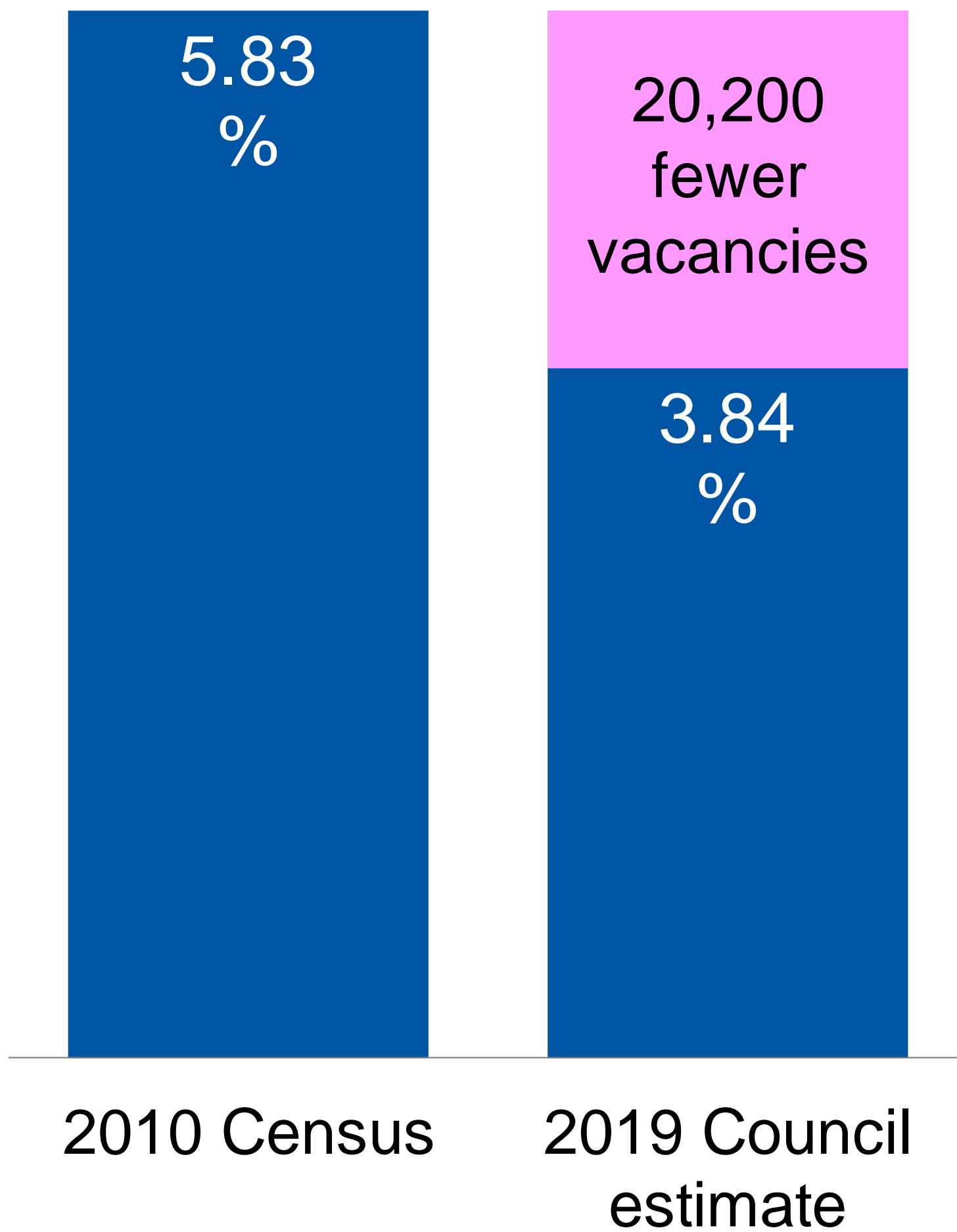
Source: U.S. Census Bureau, Decennial Census (1970-2010); Metropolitan Council, population estimates (2019)



Greater share of smaller households



Vacancy rates are dropping



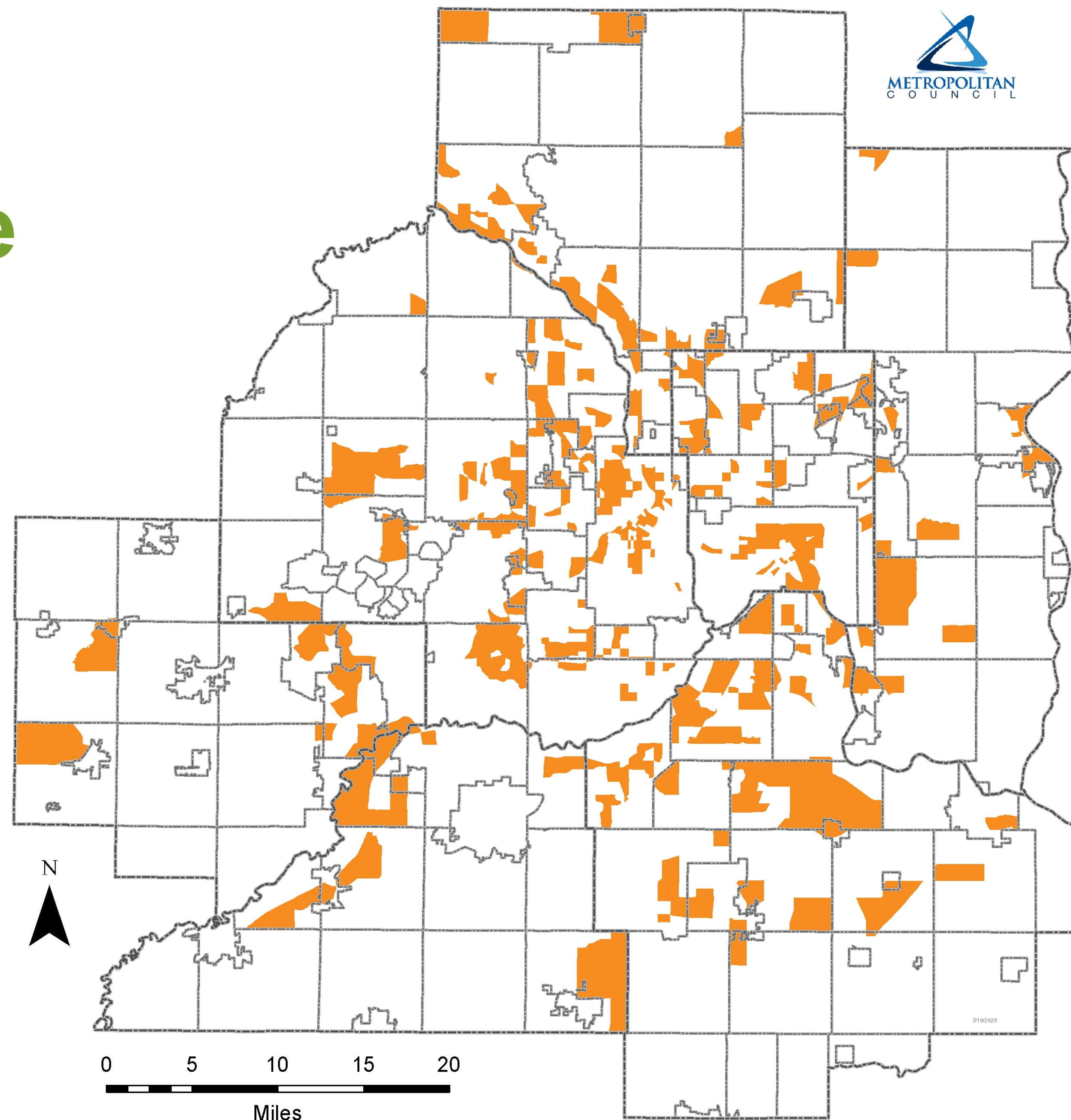
Source: U.S. Census Bureau, Current Population Survey / Housing Vacancy Survey data for full MSP metropolitan area.



Vacancy rates are dropping region-wide

Transportation Analysis Zones where the vacancy rate dropped by at least half between 2010 and 2019

Source: U.S. Census Bureau, 2010 Census; Metropolitan Council, 2019 estimates for Transportation Analysis Zones.

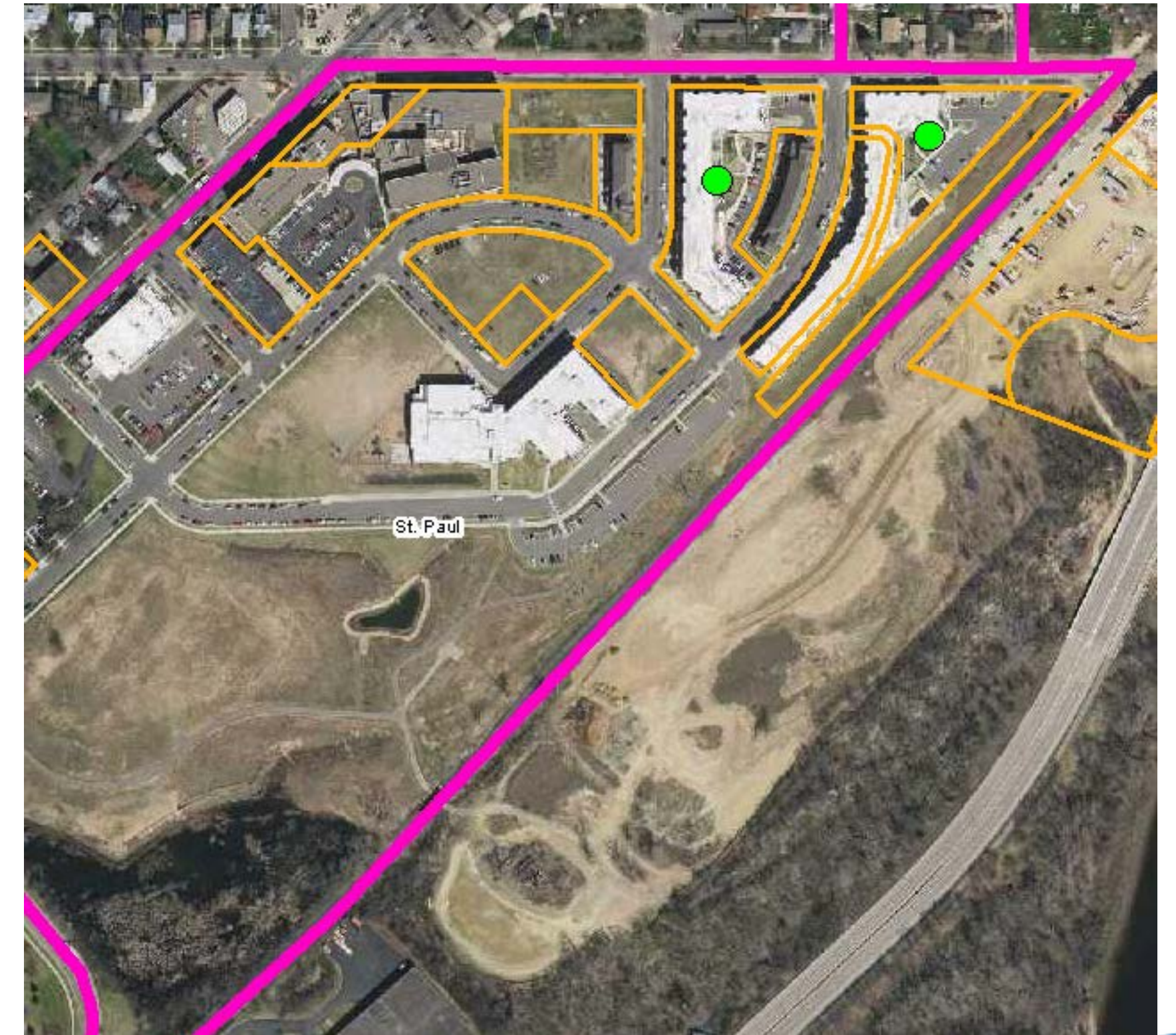


What's next? Update on the 2020 Census



PAST: Met Council's support of 2020 Census

- Co-convenor of *Local Governments Roundtable on 2020 Census*, meeting quarterly
- Technical assistance in the pre-2020 Count Review operation: identifying areas for pre-2020 field checking
- Ensuring address lists are complete
- Reviewing and re-drawing Census Tracts and Block Groups

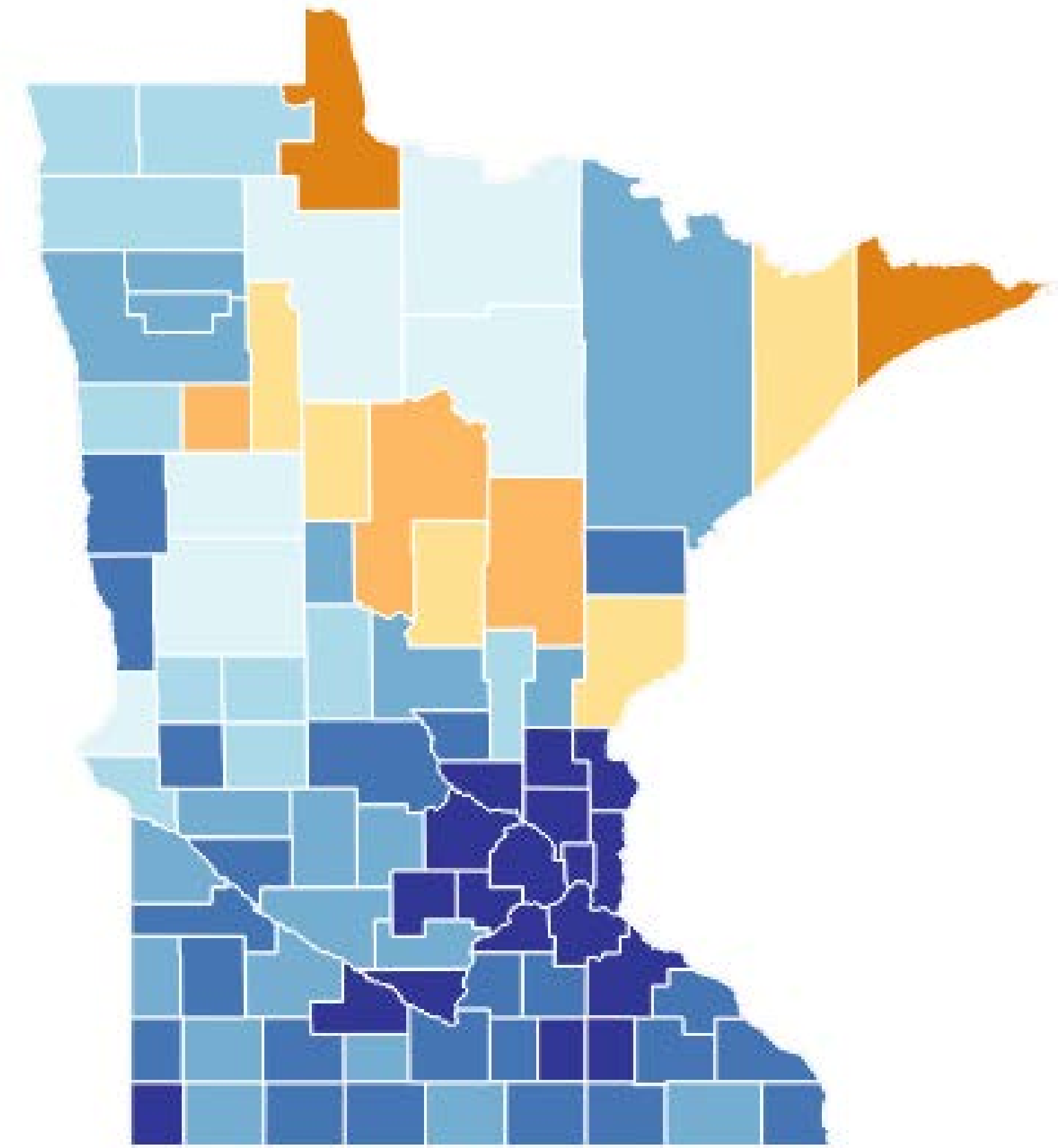
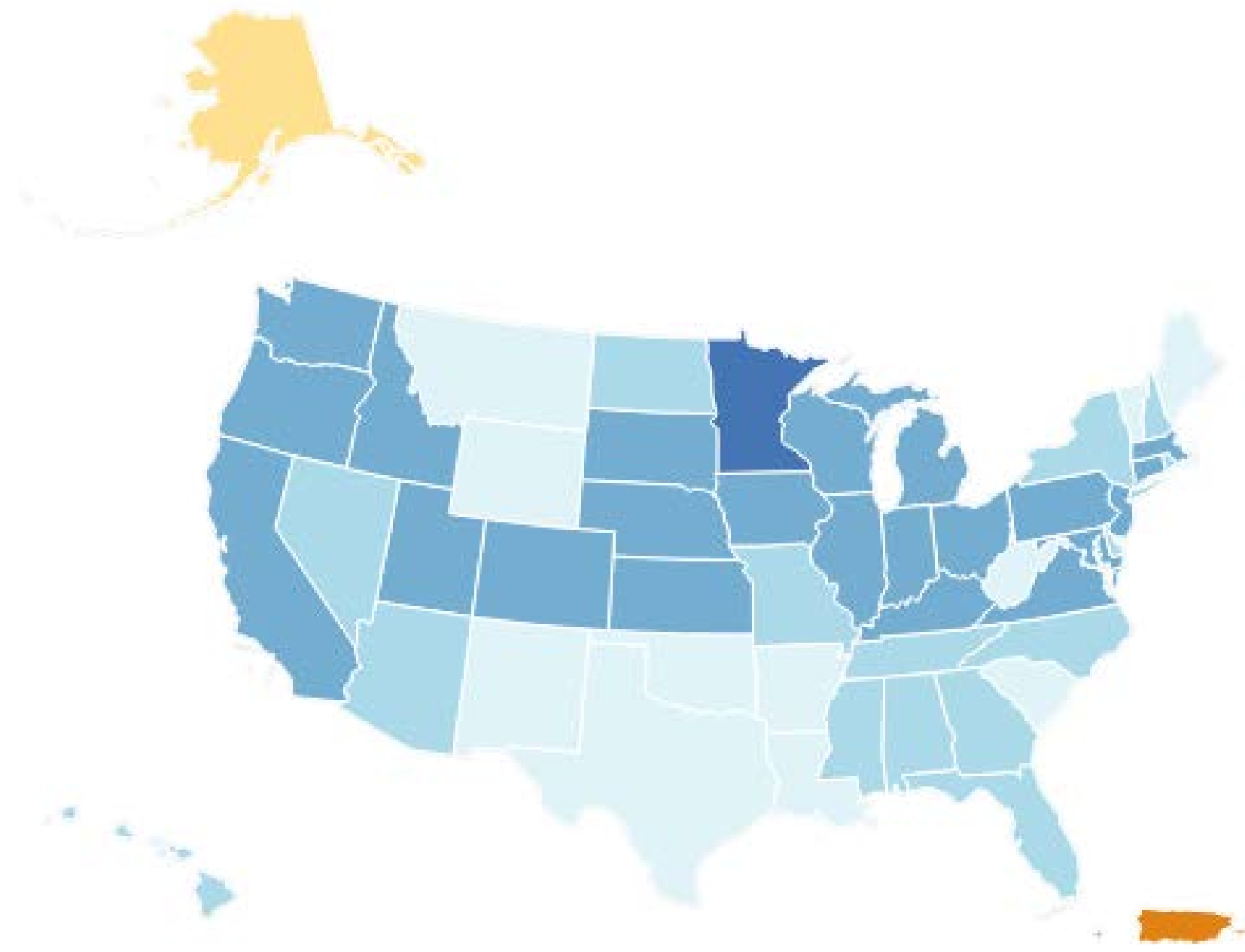


Graphic: Metropolitan Council

PRESENT: Status of operations

- Minnesota has highest self-response rate (71.5%)
 - Wisconsin #2 at 68.9%
 - US 62.0%

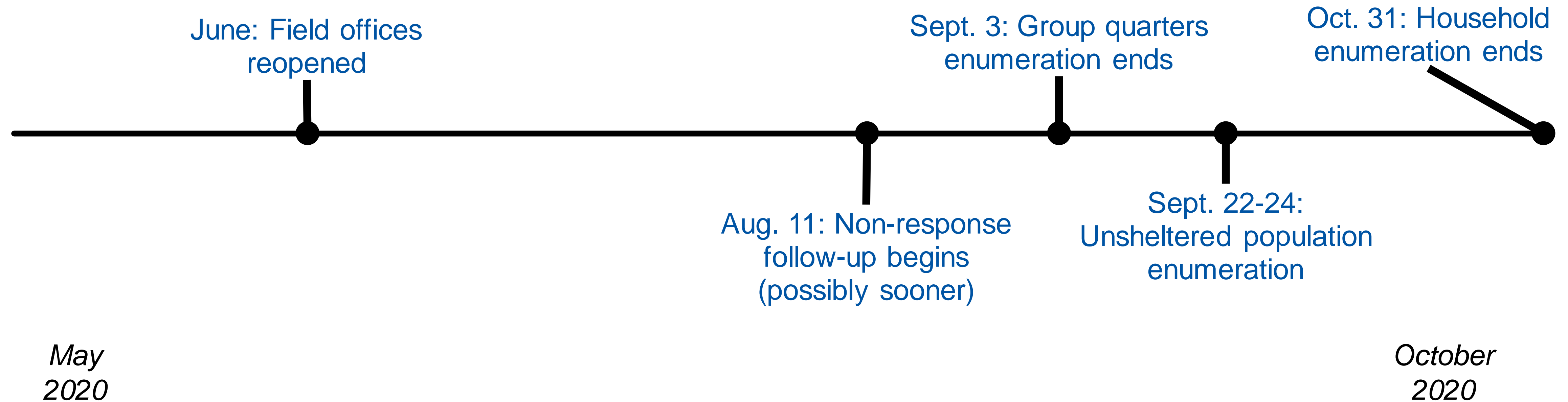
- Twin Cities region leads the state



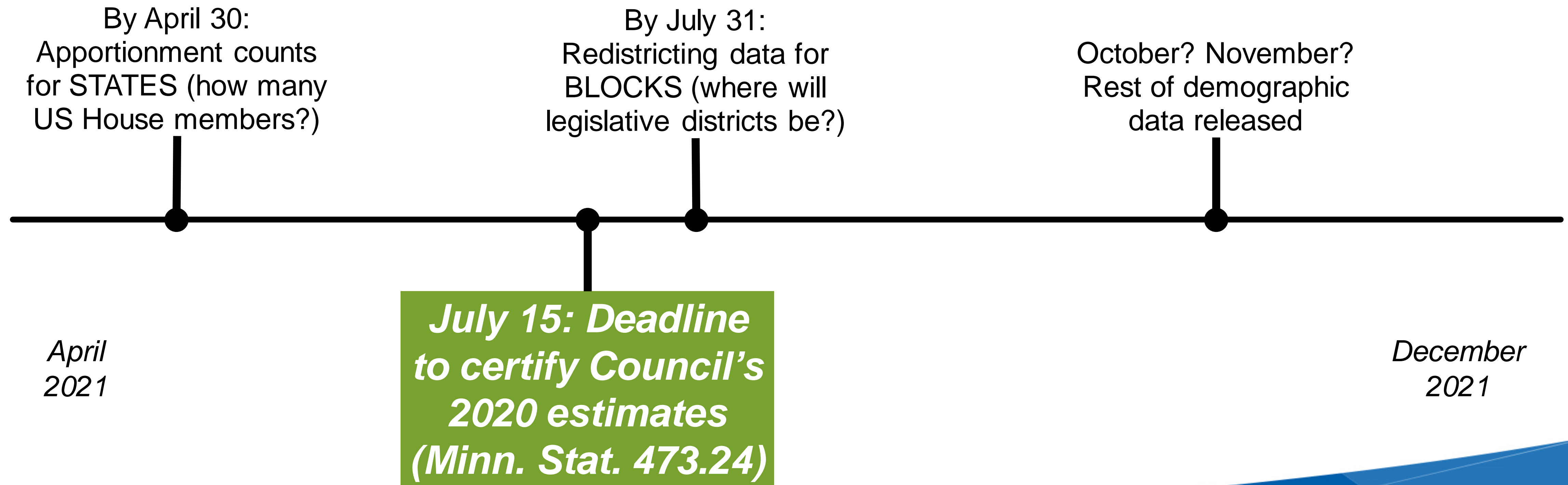
Self-Response Rate (%)



PRESENT : Status of operations



FUTURE: Data releases



FUTURE: Council follow-ups

- 2020
 - Ensure group quarters facilities were enumerated
- 2021
 - Identify areas where enumeration may have been incomplete
 - Assist communities who want to challenge their counts (Count Question Resolution)
 - Report on lessons from the data
- 2022
 - Use census data to examine the performance of our estimates model
 - Compile estimates for 2021 using the 2020 Census as a baseline
 - New regional forecast

For more information:

metro council.org/populationestimates

Matt.Schroeder@metc.state.mn.us