

SOUTHWEST

Green Line LRT Extension



# Project Update

March 10, 2021



EDEN PRAIRIE | MINNETONKA | EDINA | HOPKINS | ST. LOUIS PARK | MINNEAPOLIS

# Today's Topics

- Project Update
- 2021 Construction Look Ahead
- Light Rail Vehicles
- DBE & Workforce
- Communications & Outreach

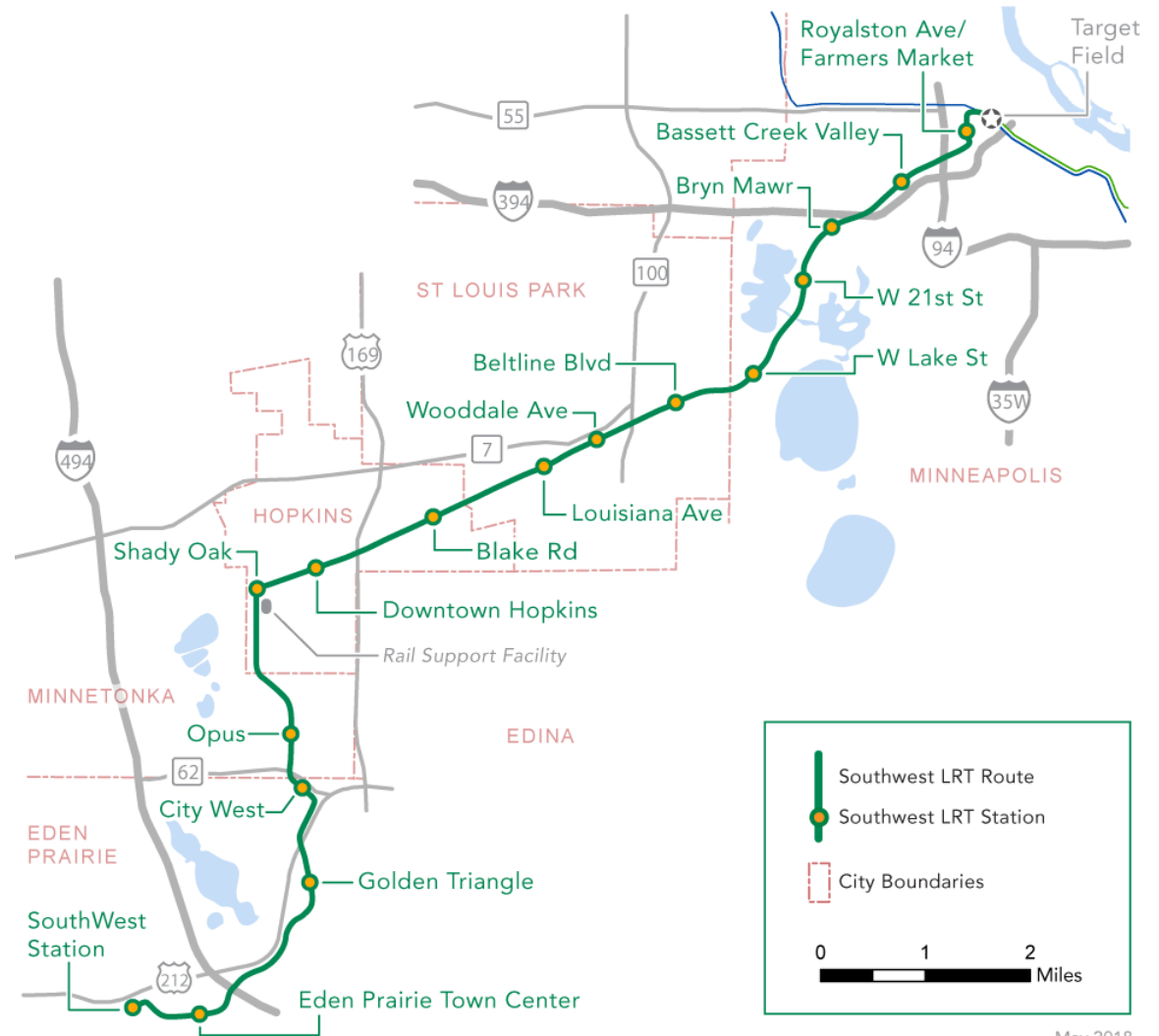


# Project Update

**Jim Alexander**  
**SWLRT Project Director**

# METRO Green Line Extension

- 14.5 miles
- 16 stations
- Will provide single seat trips to downtown Minneapolis, U of M and St. Paul
- Connections to the Airport and Mall of America via the Blue Line



# 2020 Construction Highlights

- Received FFGA on September 14
- Civil construction: 35% complete
- Under construction:
  - 8 stations underway out of 16
  - 23 bridges underway or completed out of 29
  - 5 tunnels underway out of 8
  - 47% of retaining wall work completed: 127 walls total
- 94% of 946 private utilities completed
- 65% of nearly 1,300 public utilities completed
- Completed all 15 building demolitions
- Systems mobilized and in design and procurement
- Franklin O&M Facility modifications: 40% complete
- 11 LRVs delivered

# 2021 Construction Look Ahead

# LRT Construction Sequencing



## Utilities

- Excavation
- Relocation / installation



## Site Prep

- Clear buildings
- Establish work zones, detours



## Structures, Track, Stations

- Bridges, Tunnels, Walls
- Track
- Buildings
- Roads/Trails



## Systems

- Overhead catenary
- Safety & security
- Ticket vending



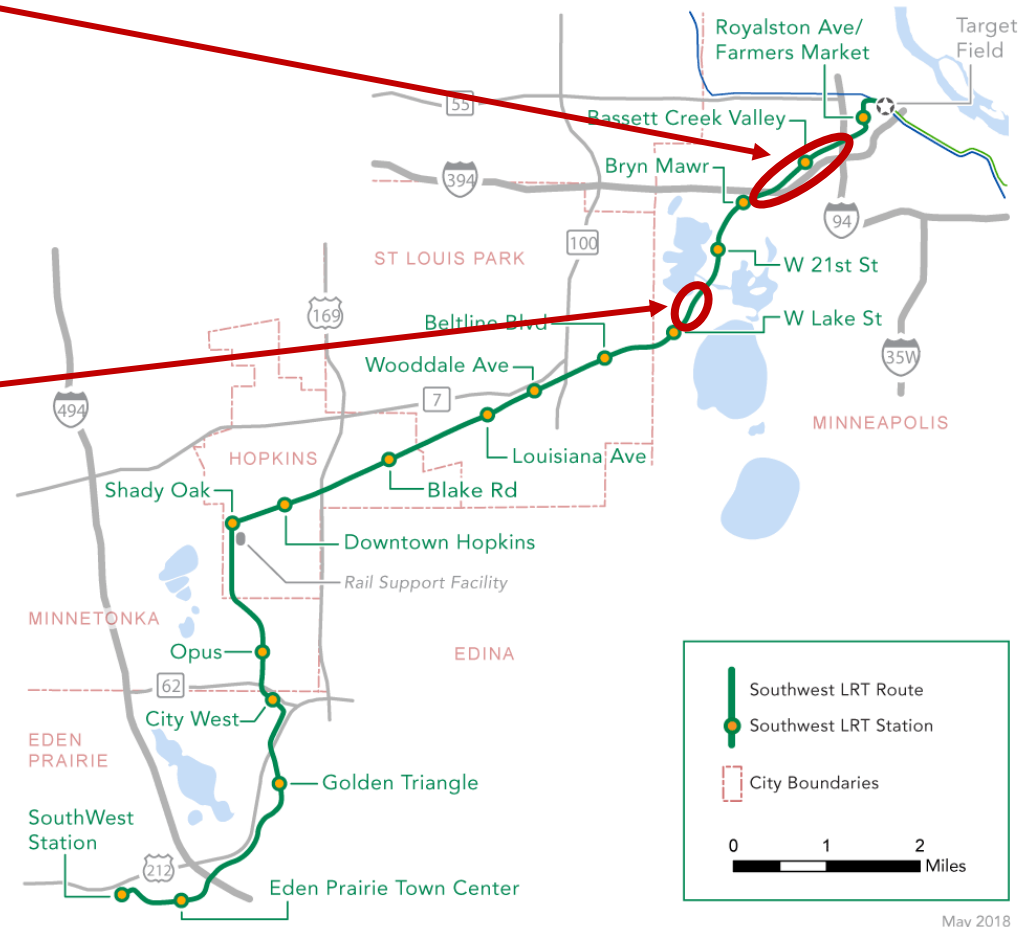
## Testing

- Safety
- Communications
- Operator training

Outreach & Communications

# Construction Challenges - Key Issues

- Corridor Protection Wall
  - Required per BNSF agreement
  - Required environmental clearance which was completed after civil construction contracting
  - Adding to the Civil Construction Contract by change order
- Secant Wall
  - Unforeseen soil conditions (settling during initial tunnel construction) necessitated an alternative construction method
  - Taking this approach out of an abundance of caution
  - Adding to the Civil Construction Contract by change order
- These elements will impact the project schedule



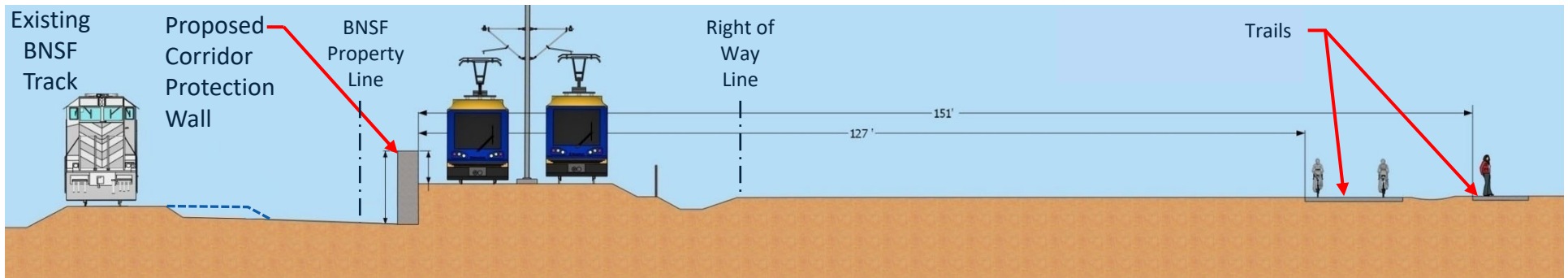
May 2018



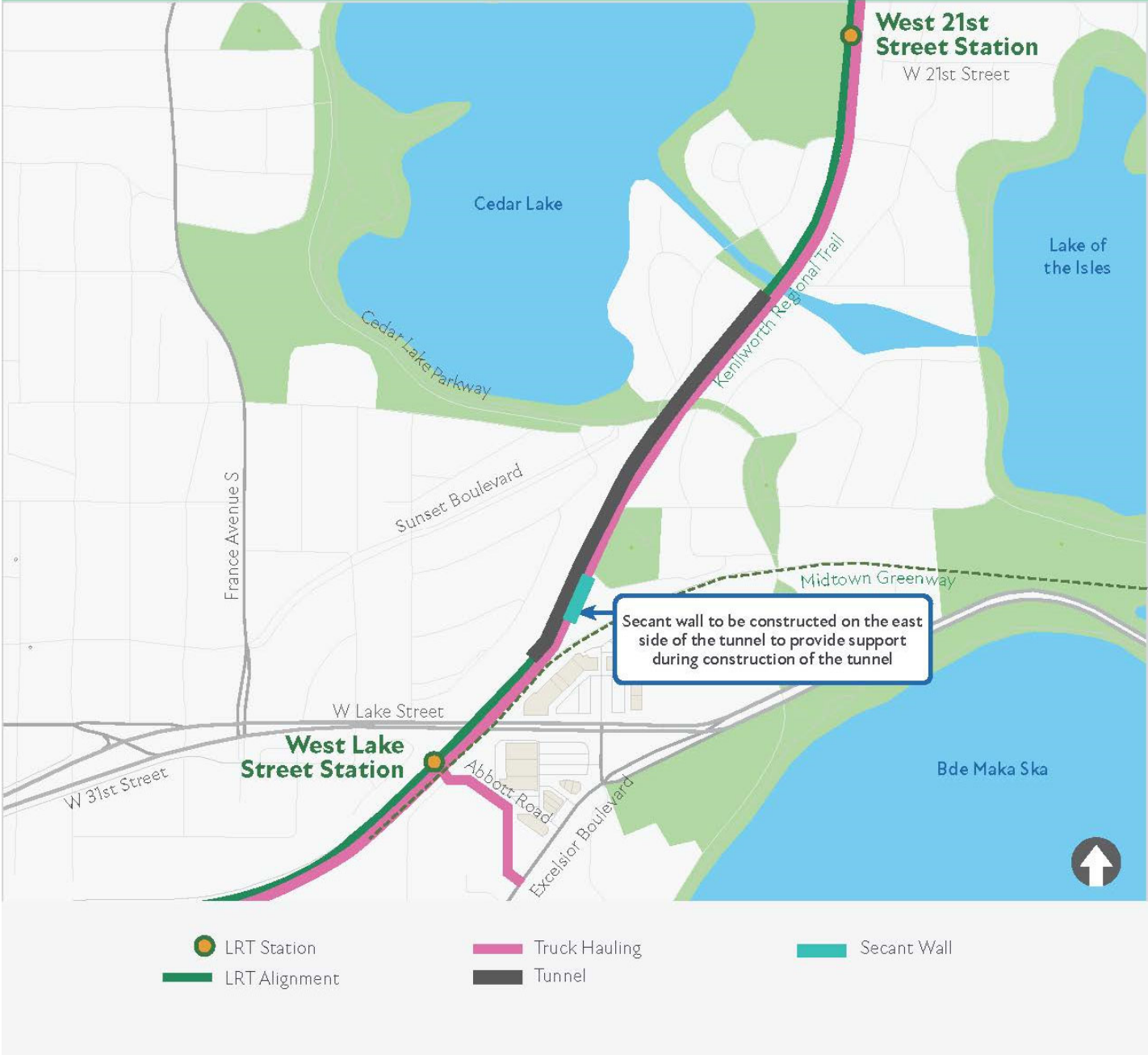
# Corridor Protection Wall



Example of section near Bryn Mawr Meadows



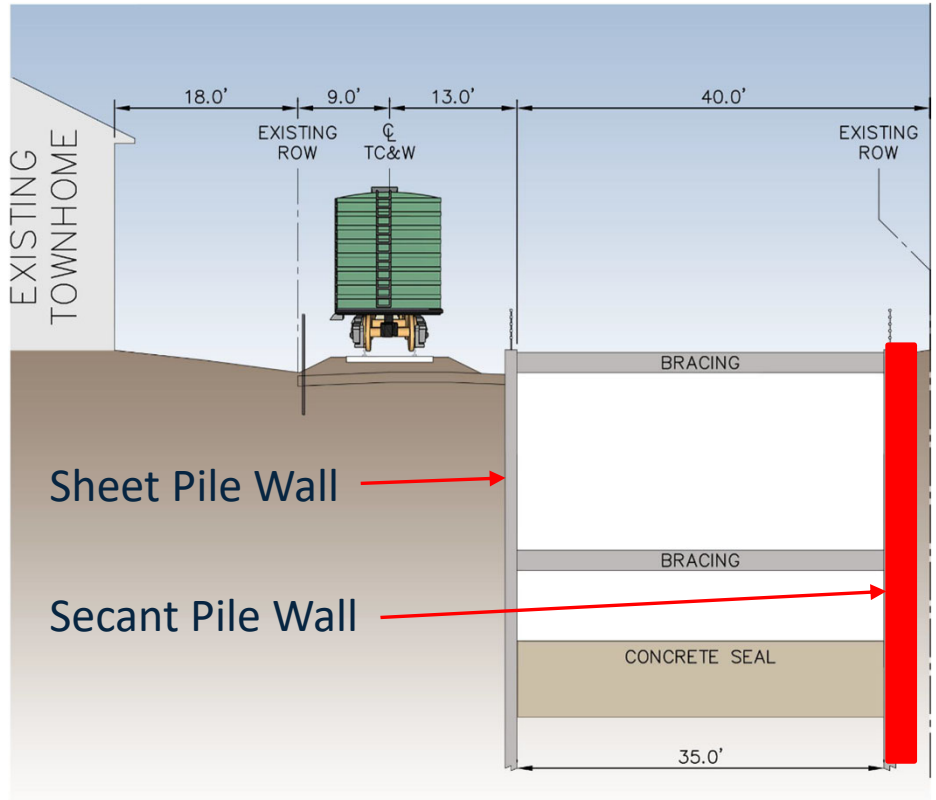
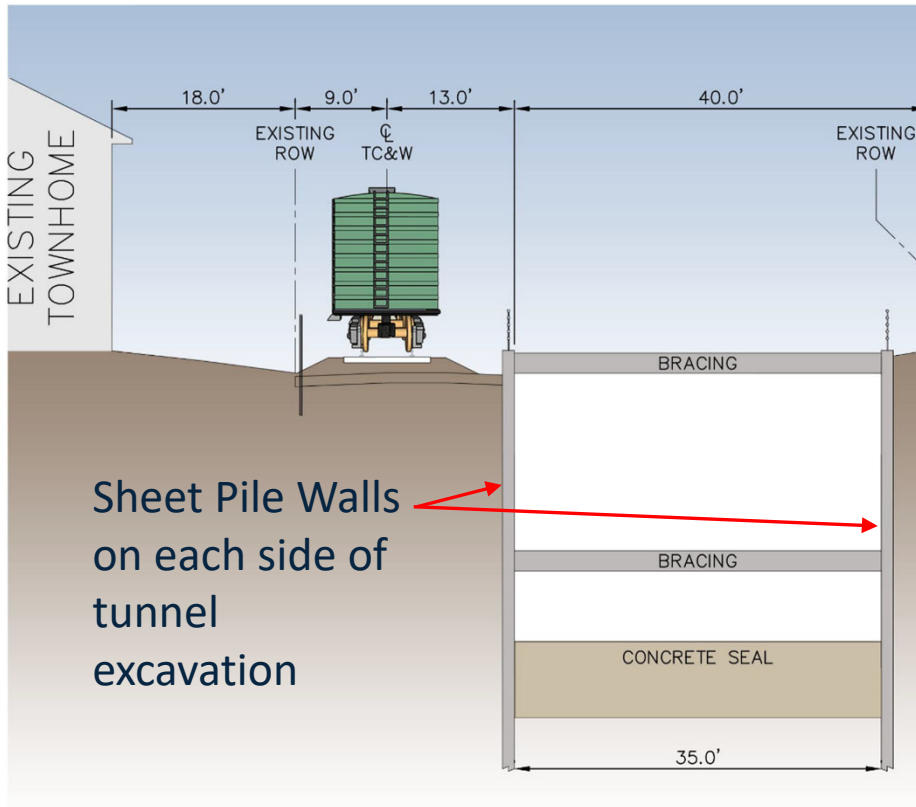
# Secant Pile Wall



# Kenilworth Tunnel Construction

Original Plan

Modified Plan at Cedar Isles Condominium and Parking Ramp



Sheet Pile Walls  
on each side of  
tunnel  
excavation

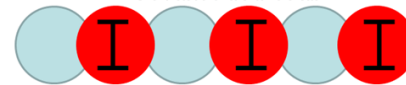
Sheet Pile Wall

Secant Pile Wall

Sheet Pile Wall in Plan View



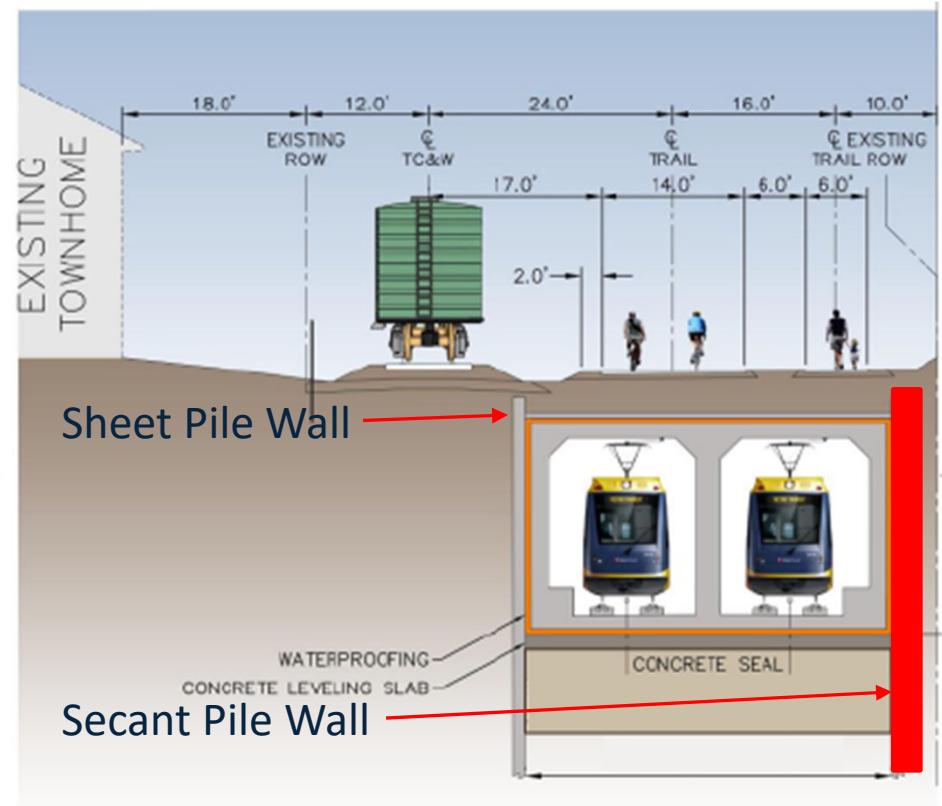
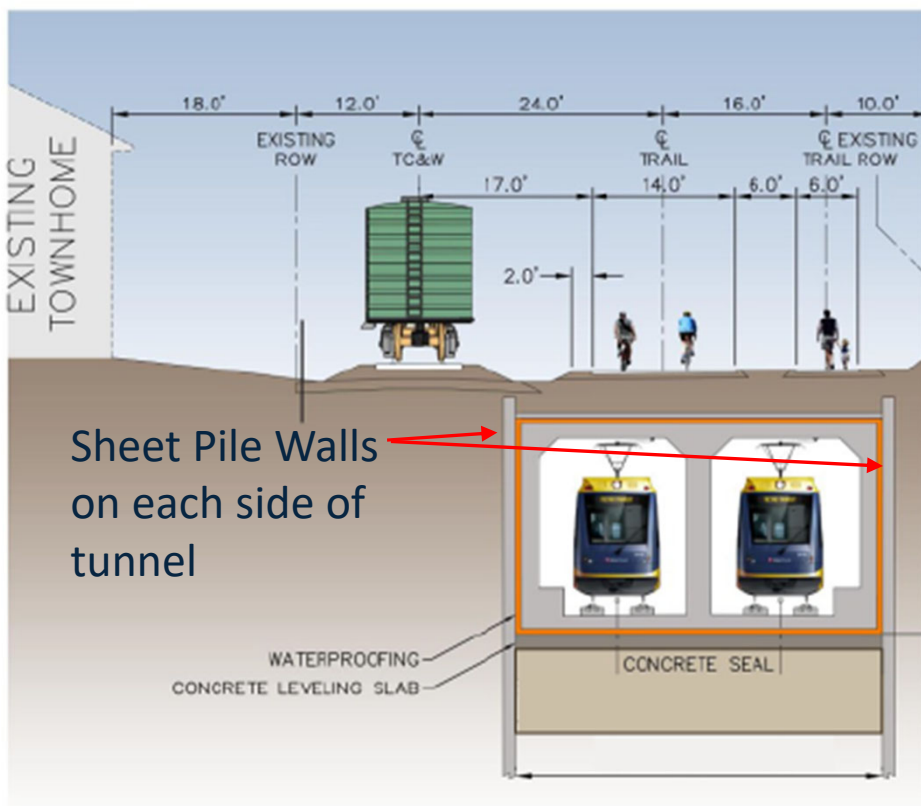
Secant Pile Wall in Plan View



# Kenilworth Tunnel Construction

Original Plan

Modified Plan at Cedar Isles Condominium and Parking Ramp



# Example of a Secant Pile Wall



# Construction Challenges

- Both of these elements are major projects by themselves; when taken together, they have a significant impact to the project's overall schedule due to their scope and complexity
- Next steps:
  - Corridor Protection Wall
    - Complete change order process
  - Secant Wall
    - Complete change order process
    - Reach agreement on tunnel construction re-sequencing
    - Complete change order process for re-sequencing
  - Update project schedule
    - Reach agreement on schedule
    - Complete change order process

# Eden Prairie

# Eden Prairie: 2021 Construction Highlights

- Continue SouthWest Station area piling and station/parking ramp construction
- Complete deck work and/or finishing details (piling has concluded):
  - Prairie Center Drive LRT bridge
  - I-494 LRT bridge
  - Valley View Road LRT bridge
  - Nine Mile Creek LRT bridge
- Advance Eden Prairie Town Center Station
- Complete roadway and LRT construction on Flying Cloud Drive



# Eden Prairie: 2021 Construction Highlights

- Advance Golden Triangle station
- Advance Shady Oak/Hwy 212 LRT bridge
- Advance retaining walls at City West Station
- Work on the south segment of Highway 62 LRT tunnel
- Install LRT track beginning at the west end

# Eden Prairie: 2021 Construction Highlights



# SouthWest Station



# Shady Oak Road/TH 212 LRT Bridge



# TH 62 LRT Tunnel



# Minnetonka

# Minnetonka: 2021 Construction Highlights

- Continue work at Highway 62 LRT tunnel north segment
- Advance Opus Station
- Complete Smetana Road bridge
- Continue work on Feltl Road bridge
- Advance retaining walls

# Minnetonka: 2021 Construction Highlights





# Opus Area Retaining Walls



# Smetana and Feltl Road Bridges

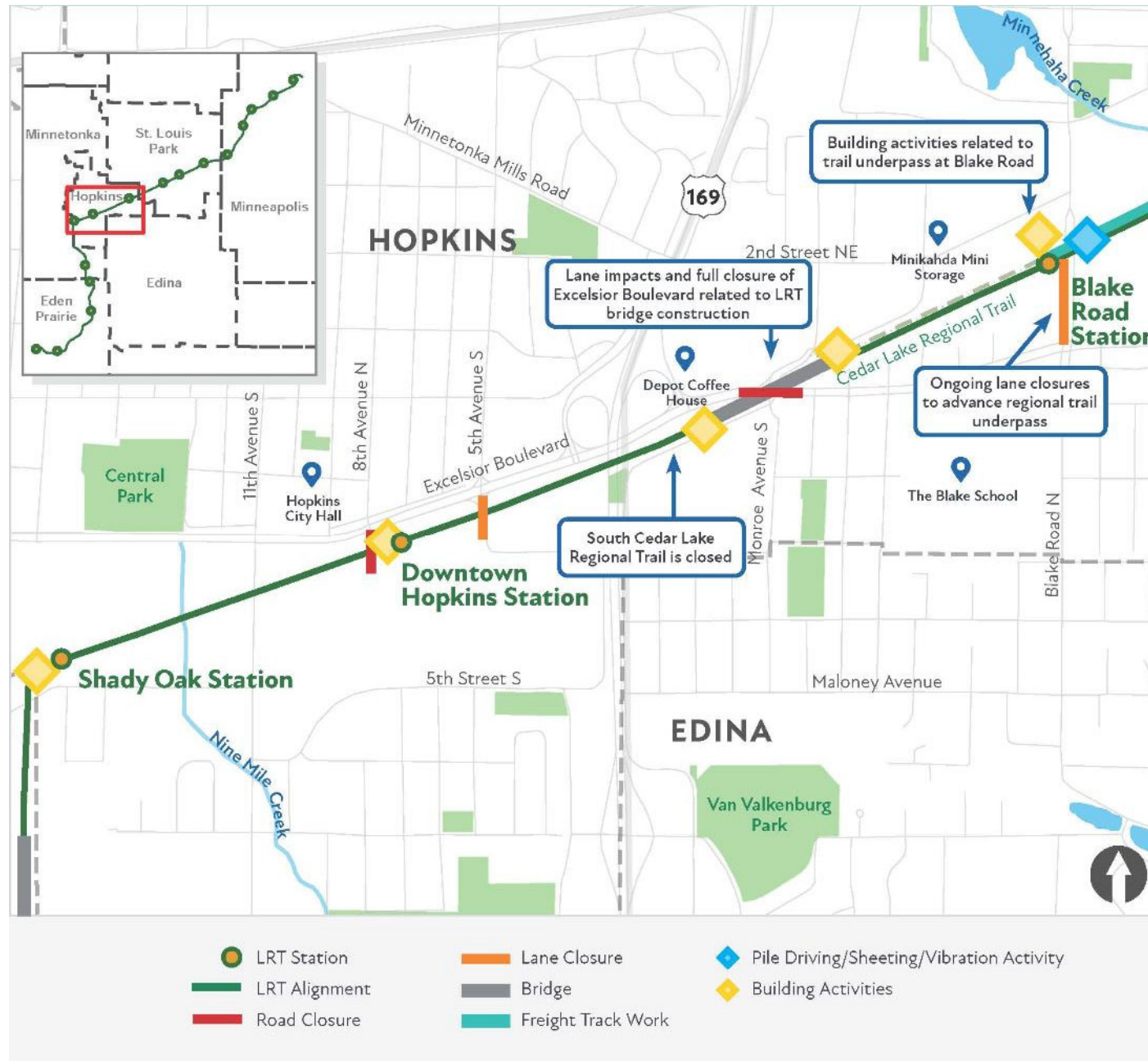


# Hopkins

# Hopkins: 2021 Construction Highlights

- Continue work on Minnetonka-Hopkins LRT bridge
- Advance Shady Oak and Downtown Hopkins stations
- Continue LRT bridge construction at Excelsior Boulevard
- Complete regional trail underpass

# Hopkins: 2021 Construction Highlights



# LRT Bridge over Excelsior Boulevard



# St. Louis Park

# St. Louis Park: 2021 Construction Highlights

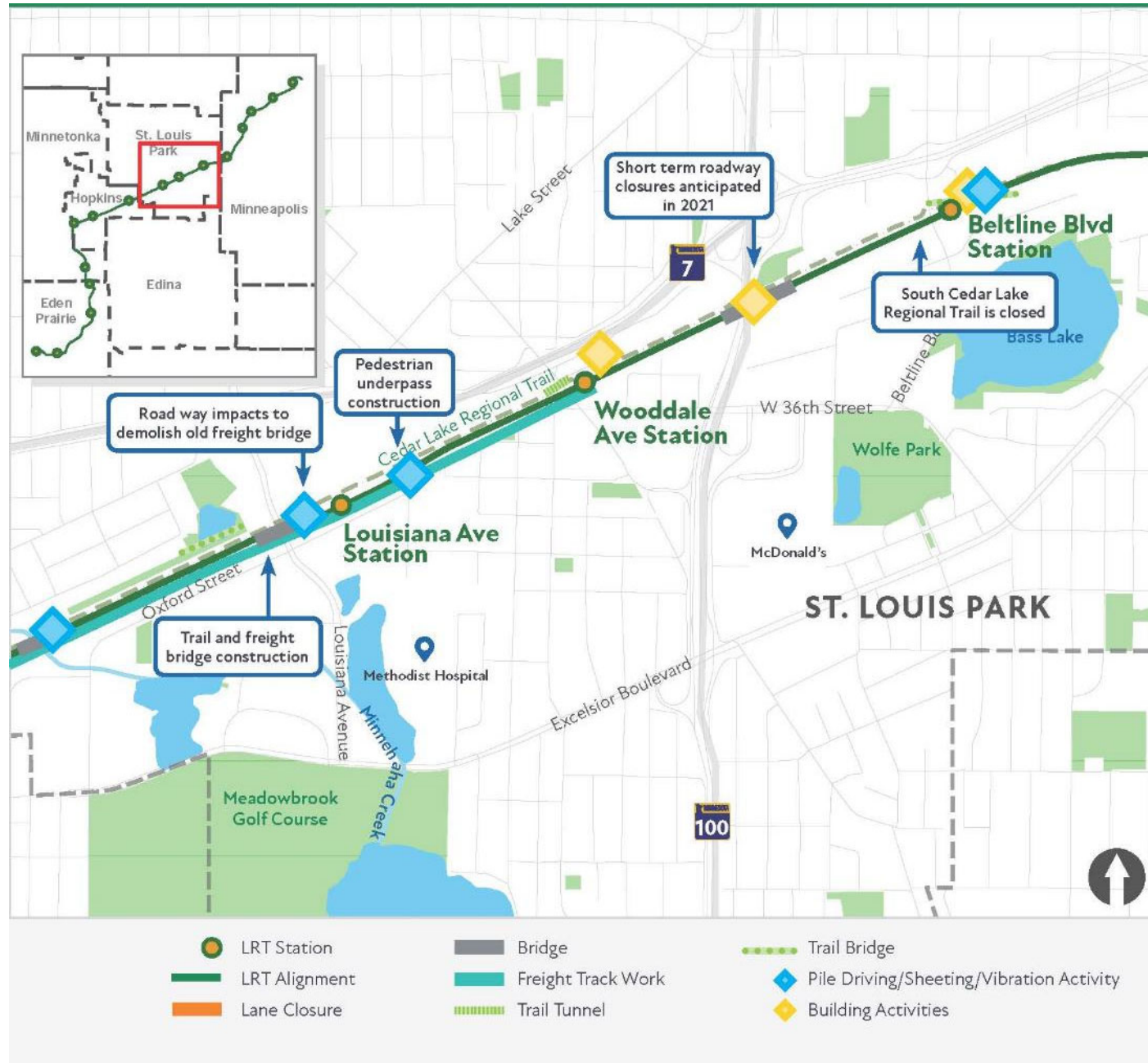
- Shift freight rail to final alignment
  - Blake Road to Wooddale Avenue
- Demo freight bridge and begin LRT bridge over Minnehaha Creek
- Louisiana Avenue Station area
  - Demo freight rail bridge
  - Begin LRT bridge foundations
  - Continue soil correction activity at station area
  - Continue retaining wall work



# St. Louis Park: Construction Highlights

- Begin Wooddale Avenue Station construction
- Complete LRT bridge over Highway 100
- Beltline Boulevard Station area
  - Begin station work
  - Complete regional trail bridge
  - Begin roadway work north of station area
  - Continue retaining wall work

# St. Louis Park: 2021 Construction Highlights



# Beltline Boulevard Regional Trail Bridge

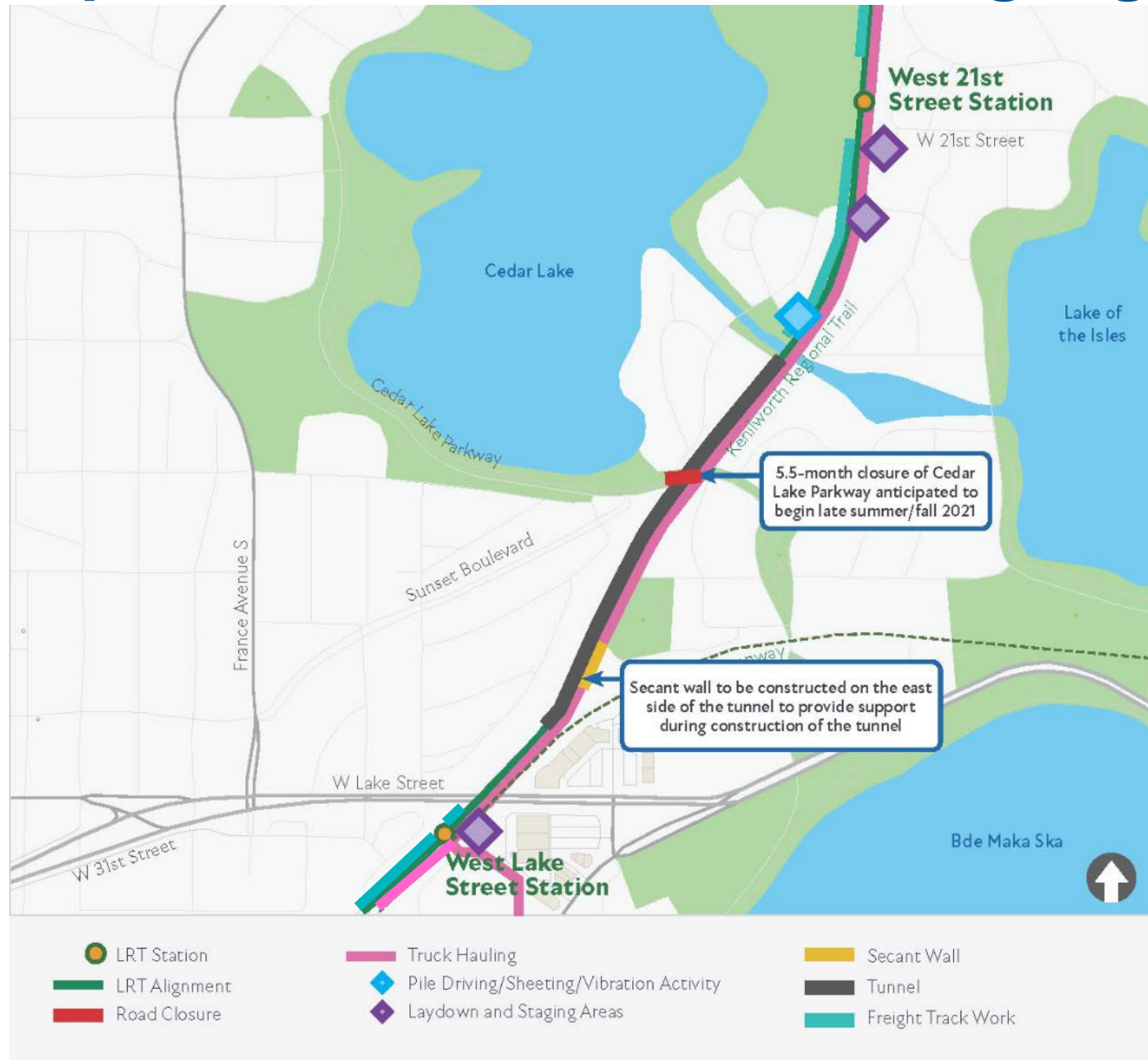


# Minneapolis

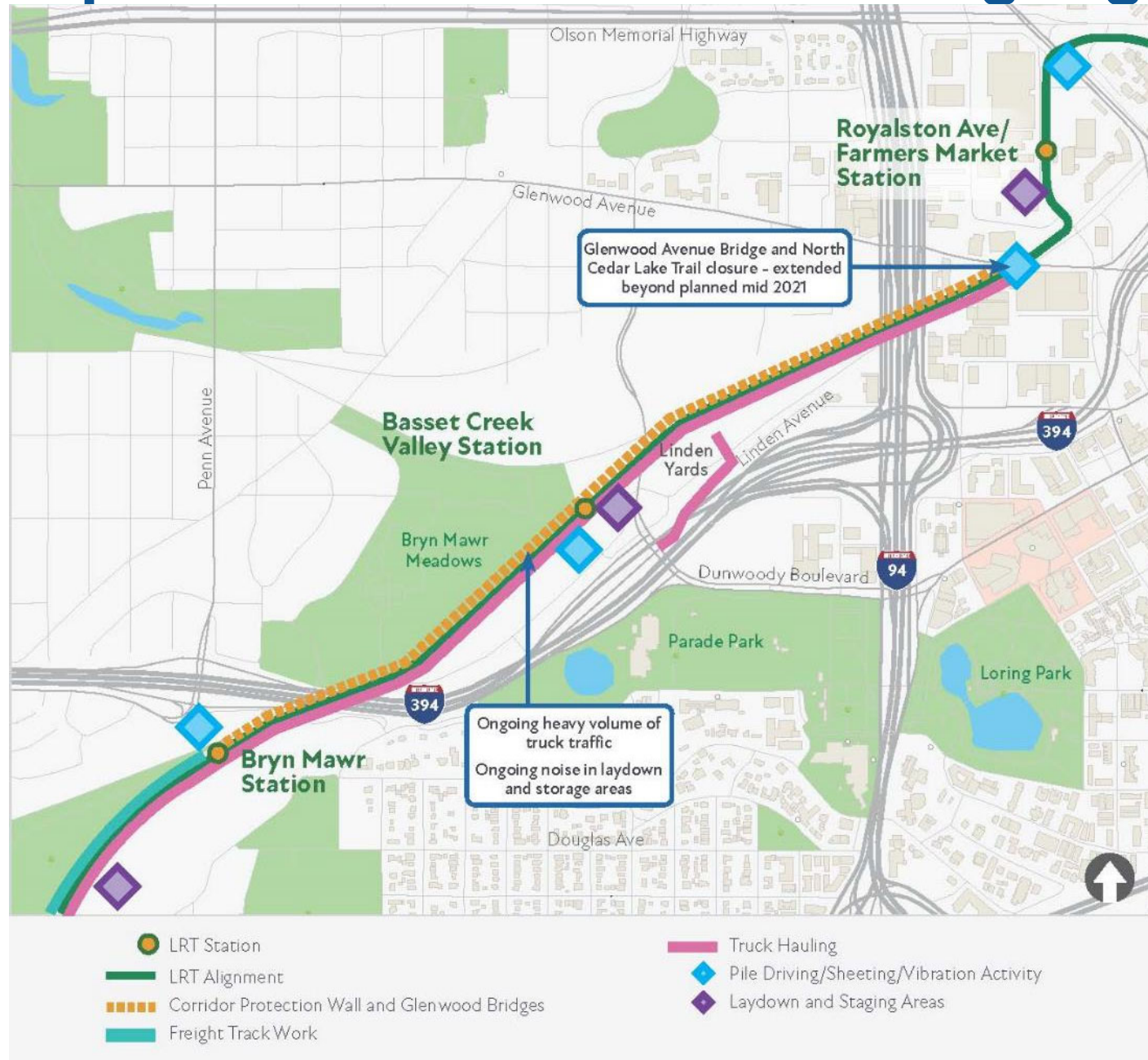
# Minneapolis: 2021 Construction Highlights

- Begin West Lake Street station construction
- Continue freight rail improvement work in Kenilworth corridor
- Advance Kenilworth LRT tunnel excavation and begin concrete work
- Advance Cedar Lake Channel LRT bridge
- Advance 21<sup>st</sup> Street station
- Begin retaining wall and foundation work at Bryn Mawr station
- Begin corridor protection wall
- Advance Glenwood/Royalston bridges and retaining walls
- Advance North 5<sup>th</sup> Avenue/North 7<sup>th</sup> Street LRT bridge

# Minneapolis: 2021 Construction Highlights



# Minneapolis: 2021 Construction Highlights



# Kenilworth LRT Tunnel Excavation





# Glenwood Avenue LRT Bridge



# Franklin Operations and Maintenance Facility Modifications

# Franklin O&M Facility Modifications



# Franklin O&M Facility Modifications



# Maintenance Bays: Wall Construction



# West Runner: OCS Foundations



# Light Rail Vehicles

# Light Rail Vehicles: 13 Vehicles Delivered





# Type II Design



# Type III Design



# Light Rail Vehicles

- LRV 301



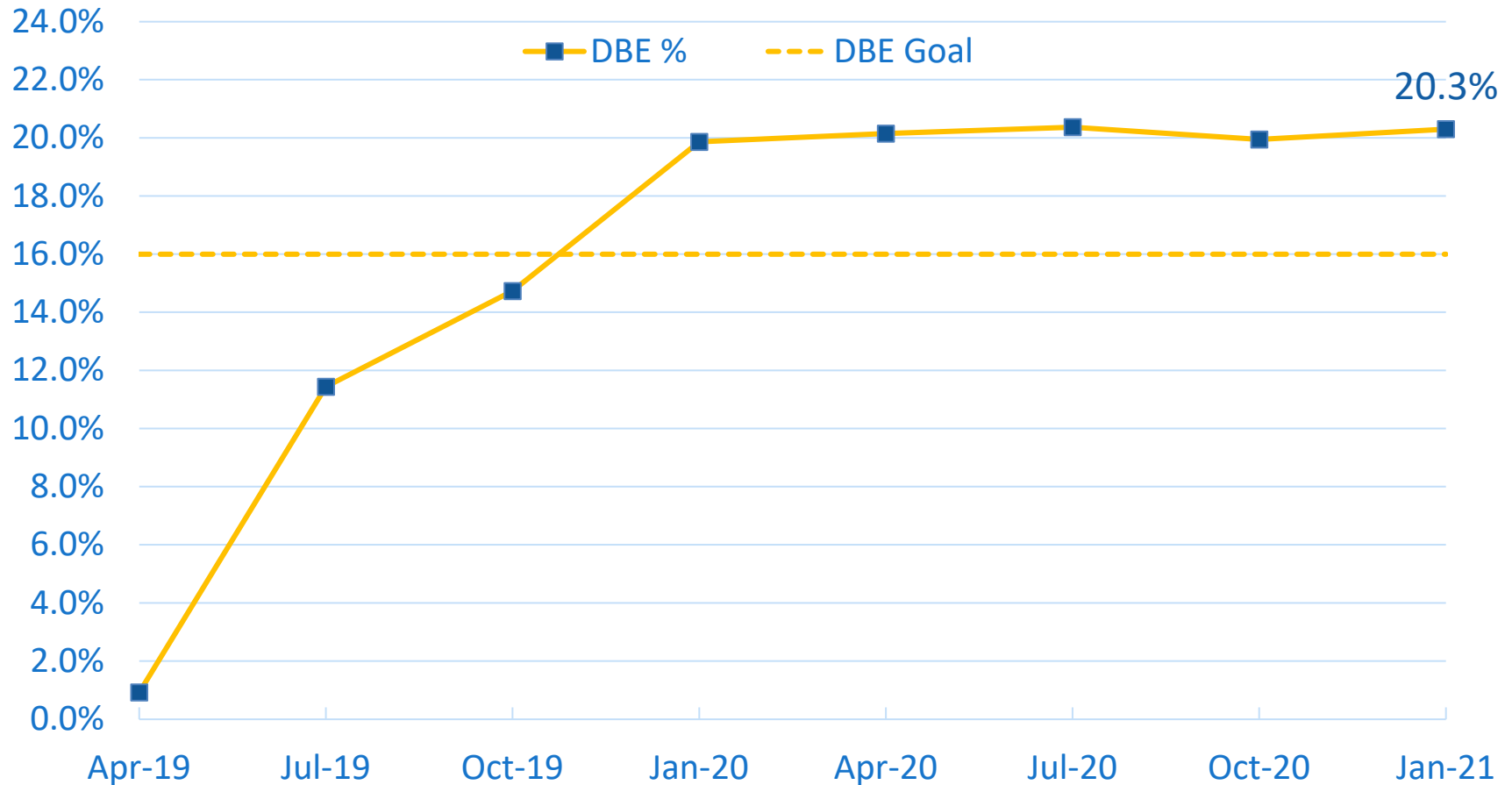
# DBE and Workforce Update

**Jon Tao**  
**Office of Equal Opportunity**

# DBE Achievement as of Jan. 31, 2021

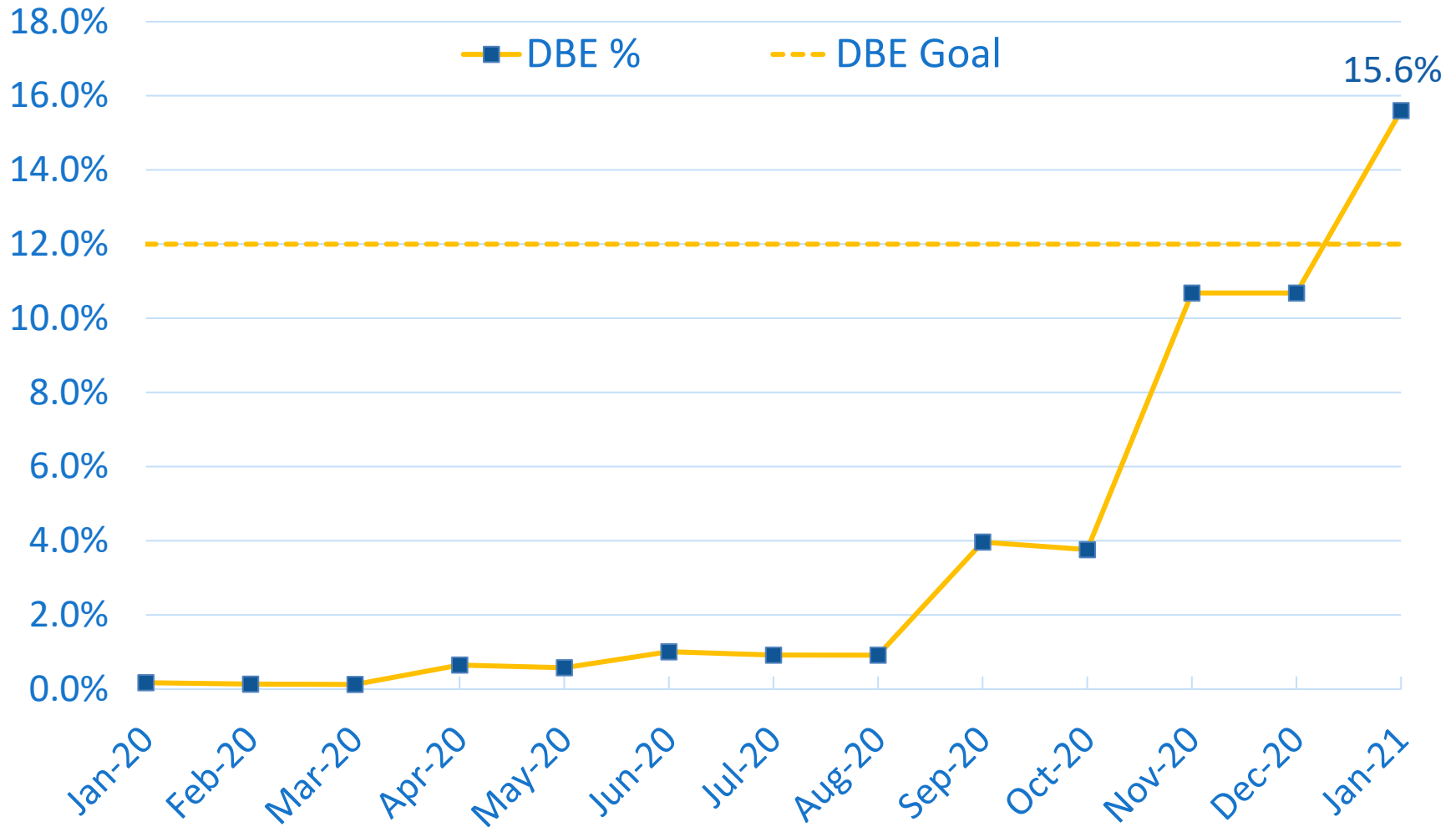
Contractor	Contract Description	Contract Amount	Contractor Billed to Date	DBE Billed to Date	DBE Date %	As of Date
LMJV 16% Goal	Civil	\$840,066,156	\$418,314,385	\$84,895,072	20.3%	1/31/21
APJV 12% Goal	Systems	\$193,819,580	\$47,782,995	\$7,455,628	15.6%	1/31/21
LS Black 15% Goal	Franklin O&M Exp.	\$38,704,353	\$14,880,678	\$2,626,223	17.6%	1/31/21
17% Goal	Closed Contracts	\$404,992	\$404,992	\$74,610	18.4%	
		<b>Contract Amount</b>	<b>Billed to Date</b>	<b>\$ DBE to Date</b>	<b>% DBE to Date</b>	
15% Goal		\$1,072,995,081	\$481,383,050	\$95,051,533	19.7%	

# Civil DBE Participation as of Jan. 31, 2021



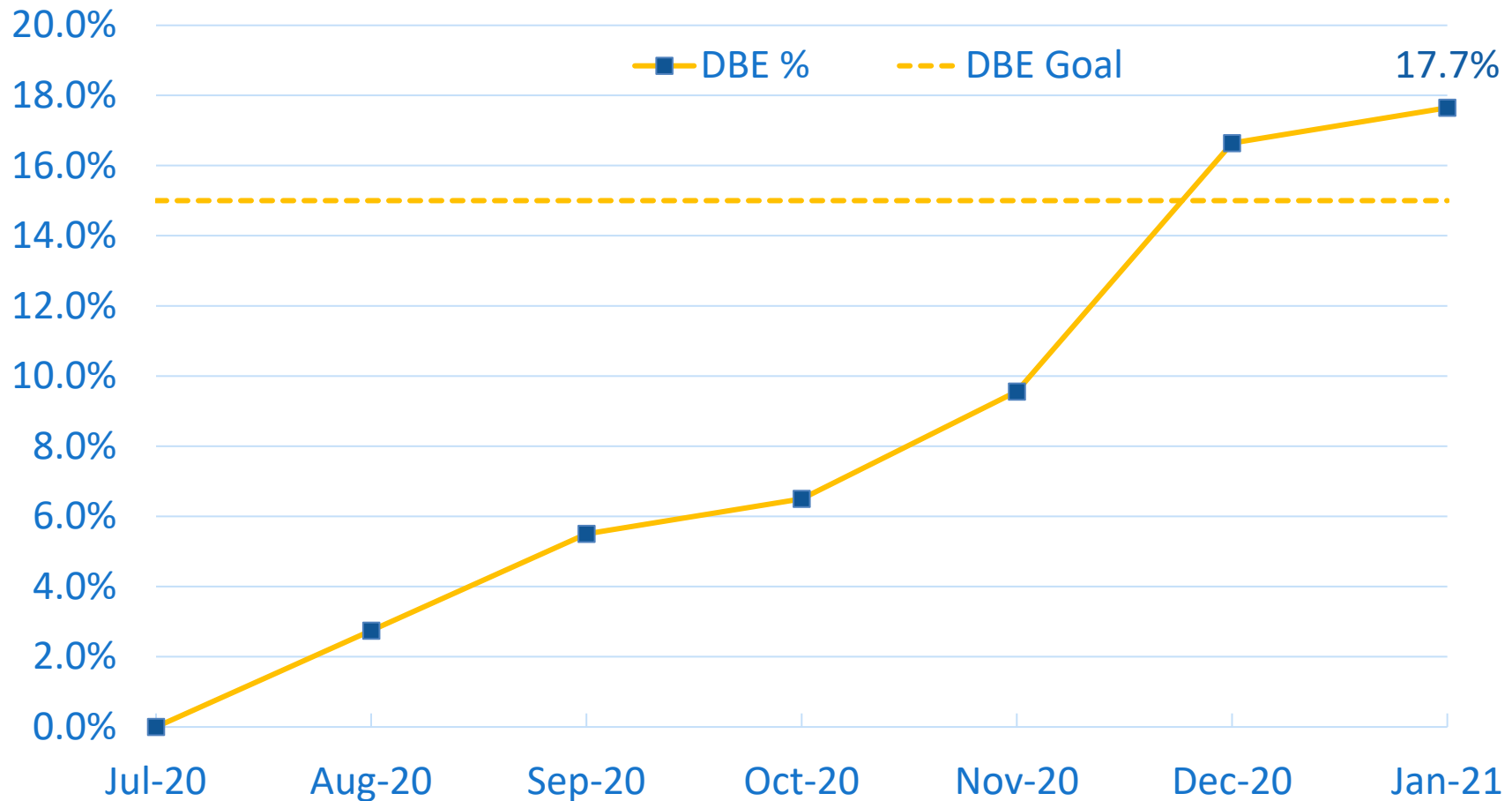
\*DBE Goal for the Civil Contract is 16%

# Systems DBE Participation as of Jan. 31, 2021



\*DBE Goal for the Systems Contract is 12%

# Franklin DBE Participation as of Jan. 31, 2021



\*DBE Goal for the Franklin Contract is 15%

# SWLRT Construction DBE Contracts Disaggregated\*

- Total Construction Contracts: \$1,071,995,081

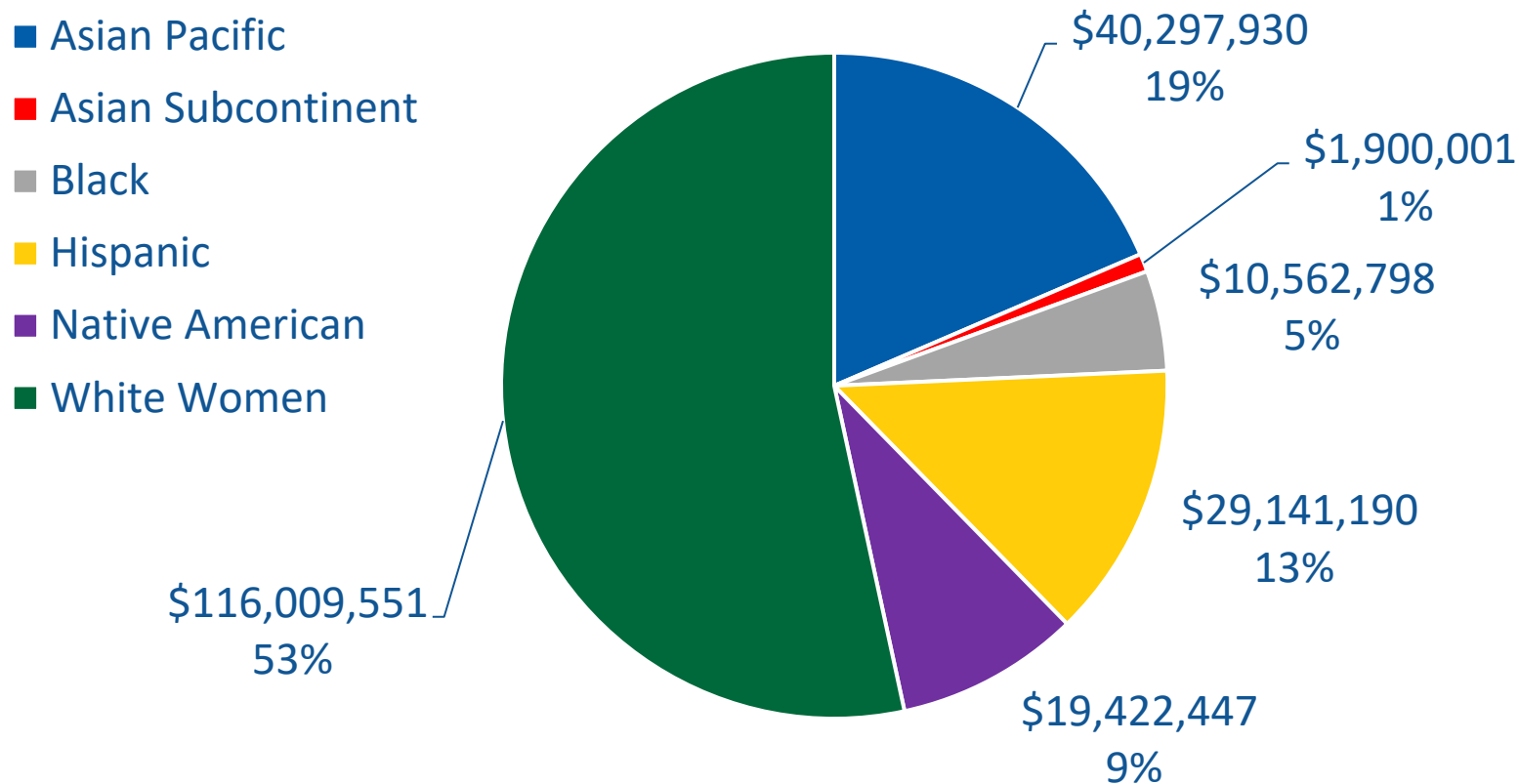
Ethnic Group	Women		Men		Total	
	Value	Percentage	Value	Percentage	Value	Percentage
Asian Pacific	\$277,743	0.03%	\$40,020,187	3.73%	\$40,297,930	3.76%
Asian Subcontinent	\$0	0.00%	\$1,900,001	0.18%	\$1,900,001	0.18%
Black	\$43,369	0.00%	\$10,519,430	0.98%	\$10,562,798	0.98%
Hispanic	\$715,140	0.07%	\$28,426,050	2.65%	\$29,141,190	2.72%
Native American	\$3,812,256	0.36%	\$15,610,191	1.45%	\$19,422,447	1.81%
White Women	\$116,009,551	10.81%			\$116,009,551	10.81%
Total					\$217,333,918	20.25%

\*Contract values are as of 1/31/21 and includes: Civil, Systems, Franklin O&M Expansion, & OMF Demo



# SWLRT Construction Contracts Disaggregated\*

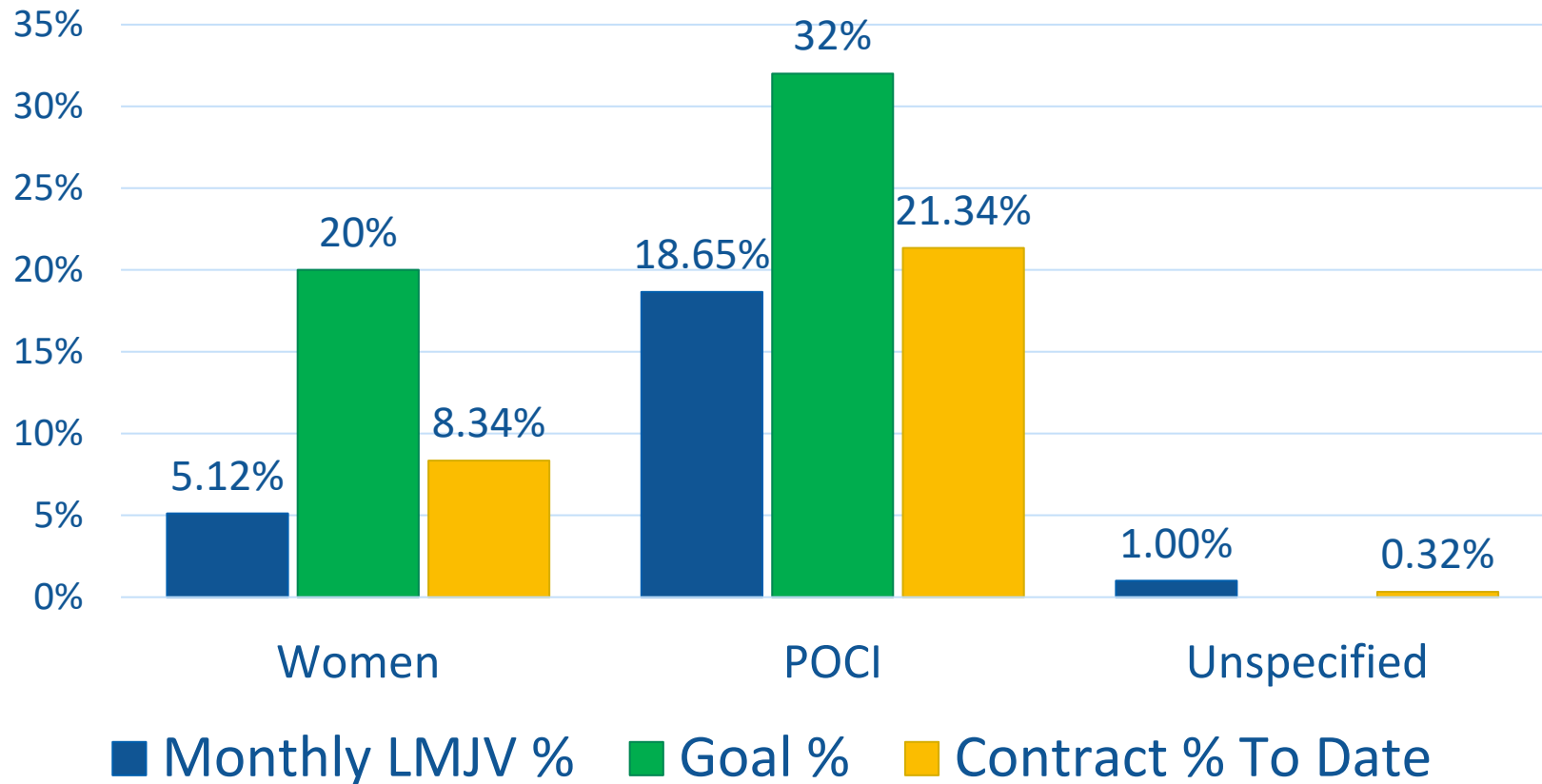
- Construction Contracts Total: \$1,071,995,081
- DBE contracts total: \$217,333,918 (20.25%)



\*Contract values are as of 1/31/21 and includes: Civil, Systems, Franklin O&M Expansion, and OMF Demolition.

# Civil Workforce Participation\*

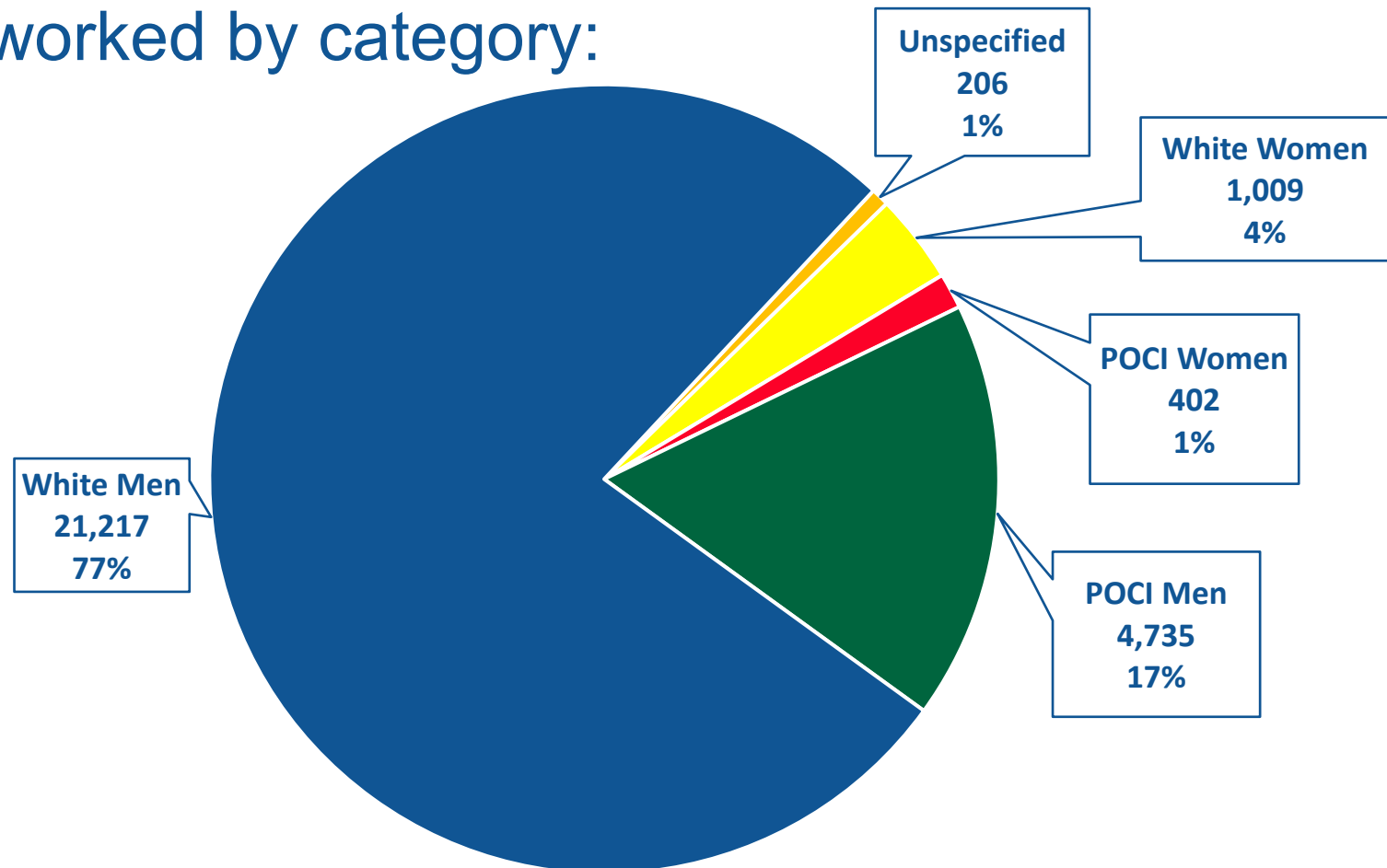
- January 2021: 27,570 hrs
- Civil Construction Total: 1,003,354 hrs



\*Based on MDHR Workforce Report for January 2021  
People of Color/Indigenous (POCI)

# Civil Workforce Participation\*

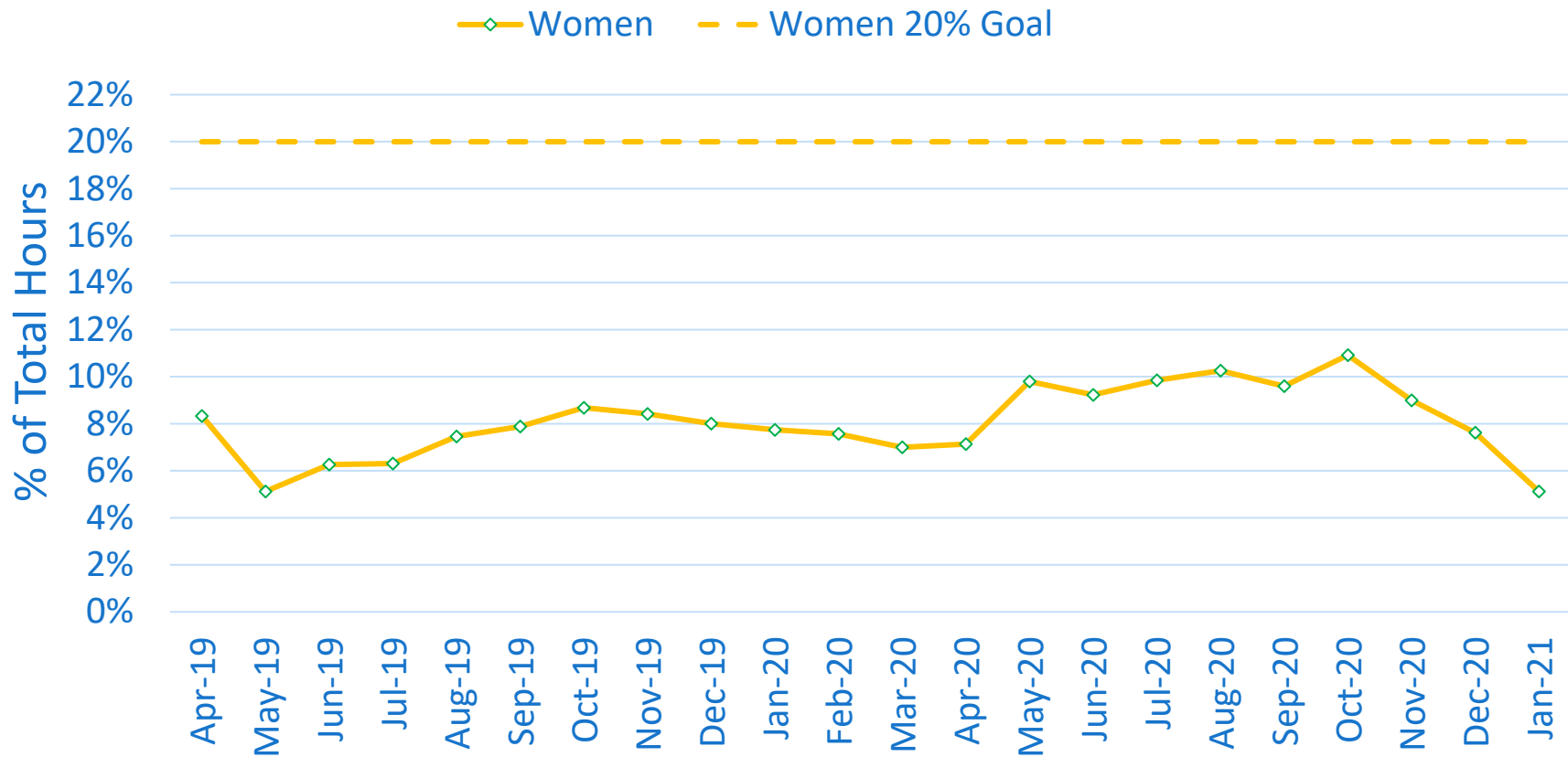
- January 2021: 27,570 hrs
- Hours worked by category:



\*Based on MDHR Workforce Report for January 2021

# Civil Workforce Participation Cumulative\*

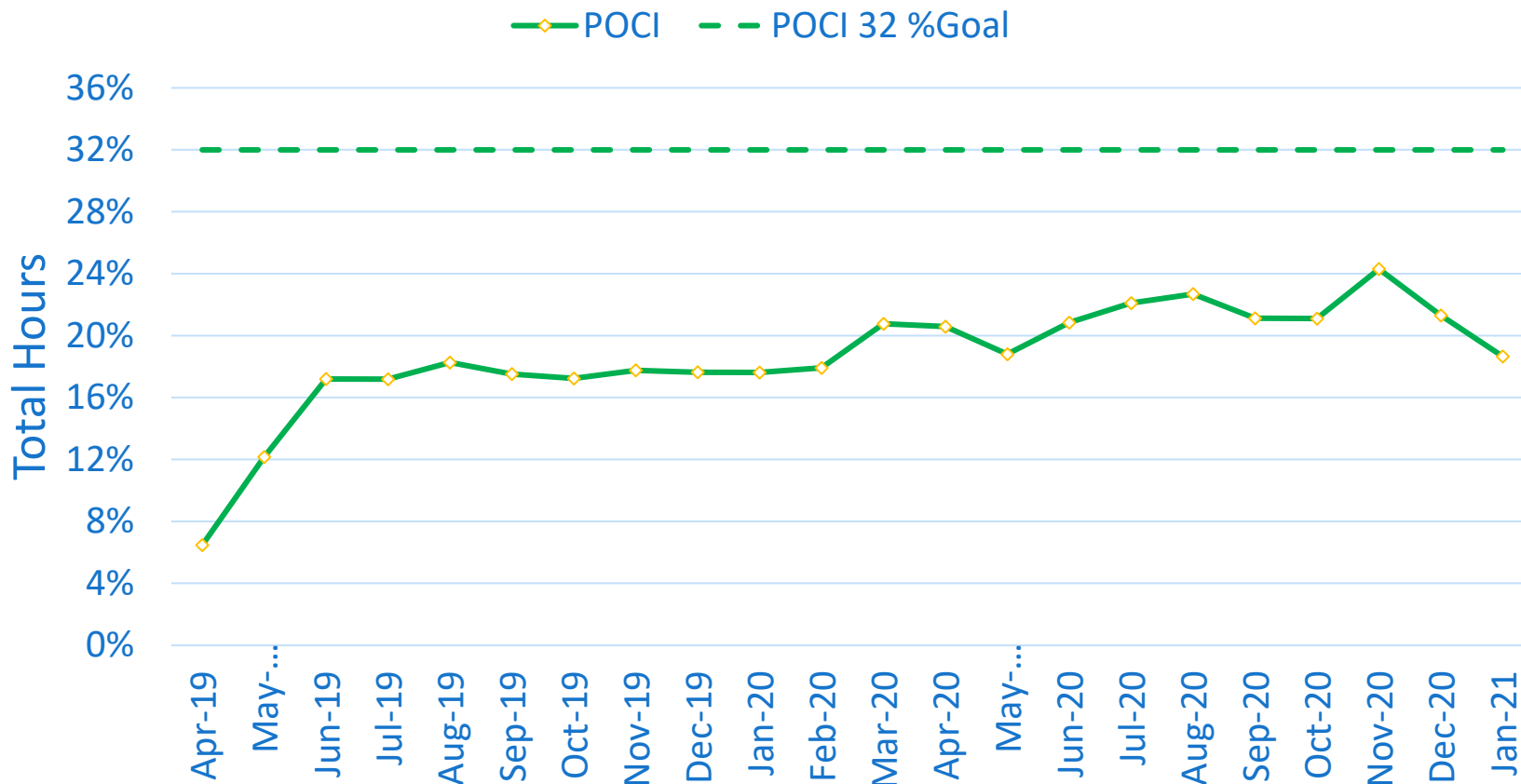
- Total Women hours to date: 83,705 hrs
- Cumulative participation: 8.34%



\*Based on MDHR Workforce Reports through January 2021

# Civil Workforce Participation Cumulative\*

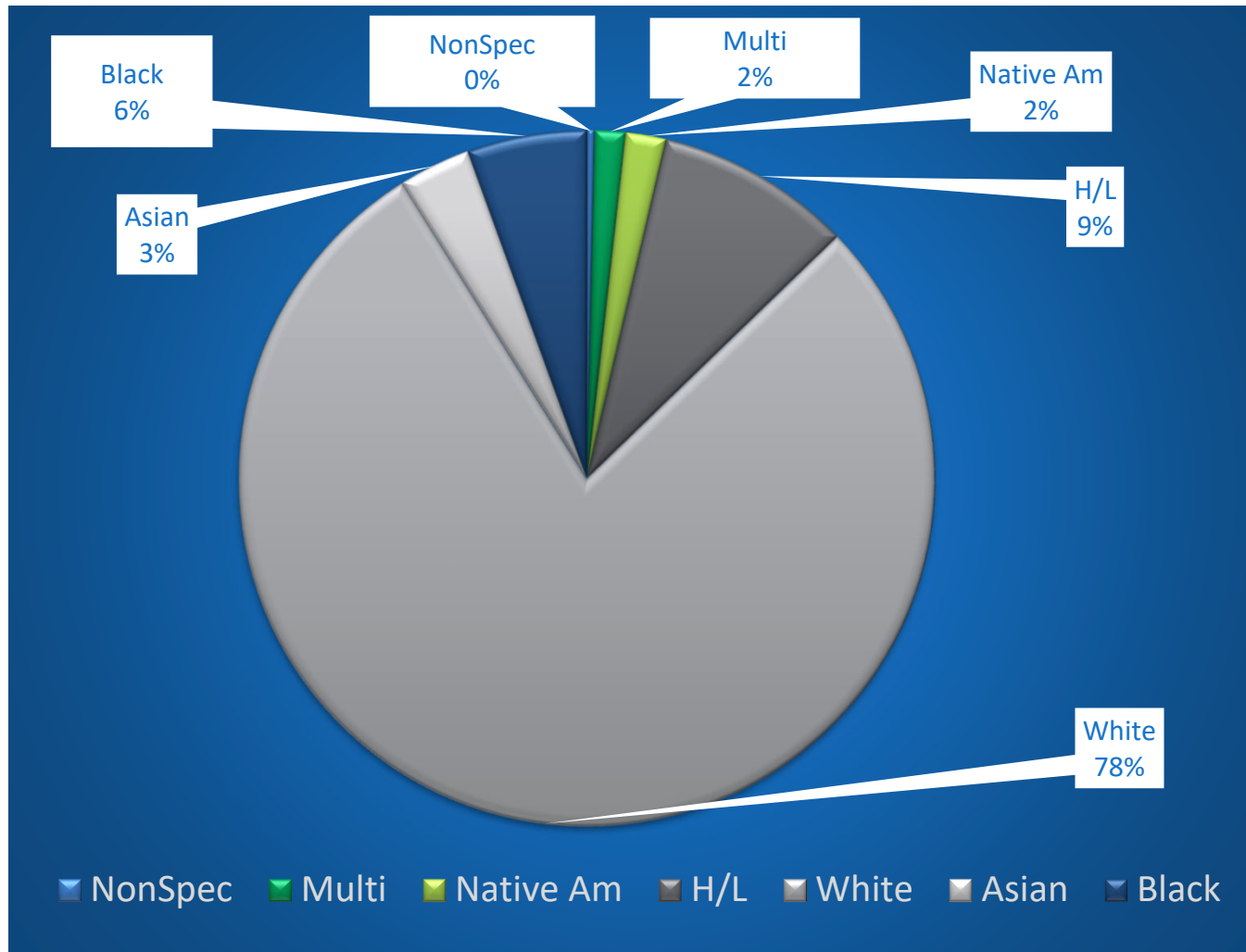
- Total POCI hours to date: 214,128 hrs
- Cumulative participation: 21.34%



\*Based on MDHR Workforce Reports through January 2021

# Civil Workforce Participation Disaggregated\*

PROJECT TO DATE



\*Based on MDHR Workforce Reports through January 2021

# Civil Workforce Participation Disaggregated\*

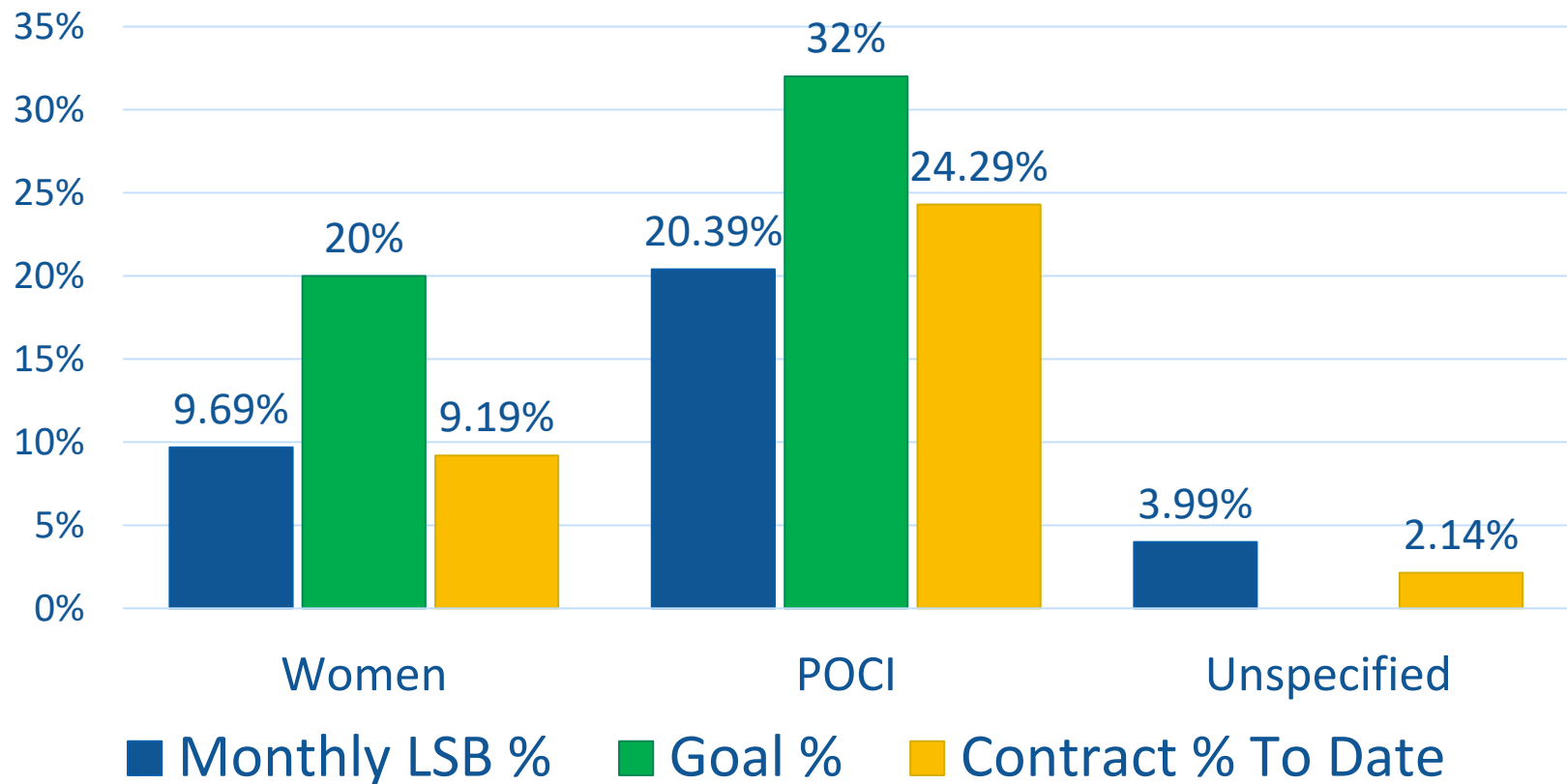
- Project Total: 1,003,354 hrs
- Total POCI: 214,108 hrs (21.34%)
- Total Women: 83,705 hrs (8.34%)

Ethnic/Racial Group	Total Hours Women	Women Percent	Total Hours Men	Men Percent	Total Hours	Total Percent
Asian Americans	91	0.01%	33,344	3.32%	33,435	3.33%
Black Americans	11,400	1.14%	44,336	4.42%	55,737	5.56%
Hispanic Americans	1,824	0.18%	89,629	8.93%	91,453	9.11%
Native Americans	7,910	0.79%	11,191	1.12%	19,101	1.9%
Multi-Racial	700	0.07%	13,683	1.36%	14,383	1.43%
White Americans	61,637	6.14%	724,222	72.18%	785,859	78.32%
Not Specified	144	0.01%	3,224	0.32%	3,367	0.34%

\*People of Color and Indigenous People (POCI) & Women participation from 12/1/18 - 1/31/2021

# Franklin O&M Workforce Participation\*

- January 2021: 8,549 hrs
- Franklin O&M Facility Construction Total: 36,994 hrs

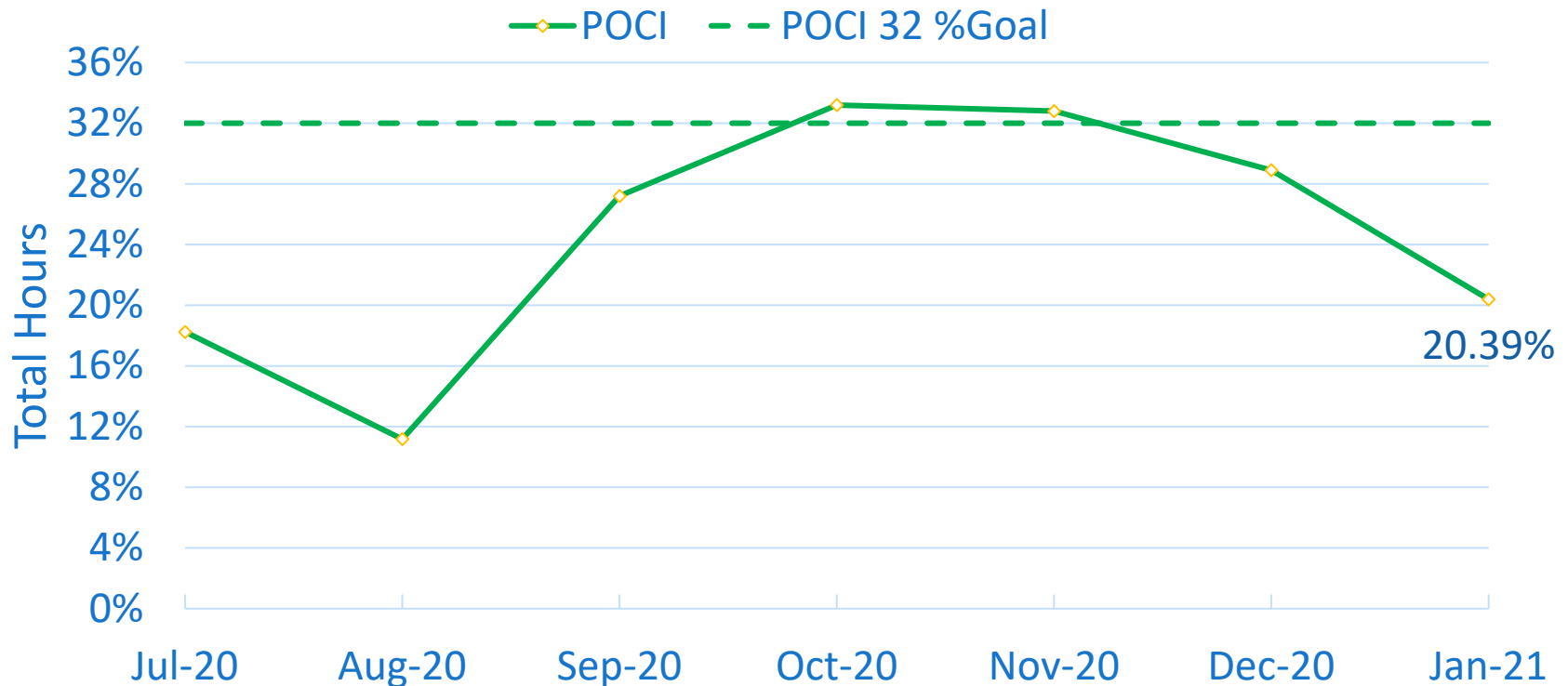


\*Based on MDHR Workforce Report for January 2021  
People of Color/Indigenous (POCI)



# Franklin O&M Workforce Participation\*

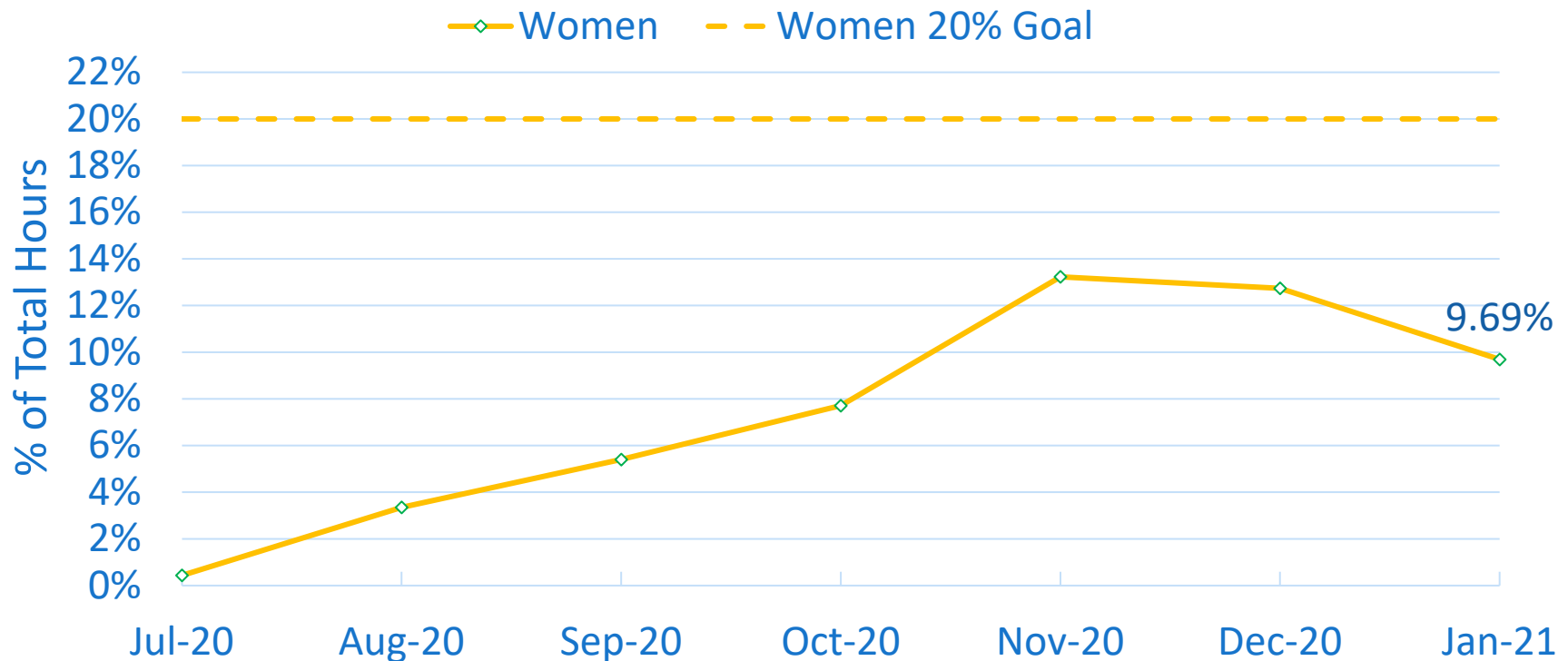
- Total POCI hours to date: 8,986 hrs
- Cumulative Participation: 24.29%



\*Based on MDHR Workforce Reports through January 2021.  
Data points are based on monthly participation percentage.

# Franklin O&M Workforce Participation\*

- Total Women hours to date: 3,401 hrs
- Cumulative participation: 9.19%



\*Based on MDHR Workforce Reports through January 2021.  
Data points are based on monthly participation percentage.

# Franklin O&M Workforce Disaggregated\*

- Project Total: 36,994 hrs
- Total POCI: 8,986 hrs (24.29%)
- Total Women: 3401 hrs (9.19%)

Ethnic/Racial Group	Total Hours Women	Women Percent	Total Hours Men	Men Percent	Total Hours	Total Percent
Asian Americans	0	0.00%	1,299	3.51%	1,299	3.51%
Black Americans	1,413	3.82%	768	2.07%	2,181	5.90%
Hispanic Americans	156	0.42%	3,117	8.42%	3,273	8.85%
Native Americans	0	0.00%	968	2.62%	968	2.62%
Multi-Racial	0	0.07%	1,267	3.42%	1,267	3.42%
White Americans	1,832	4.95%	25,385	68.62%	27,217	73.57%
Not Specified	0	0.00%	792	2.14%	3,367	2.14%

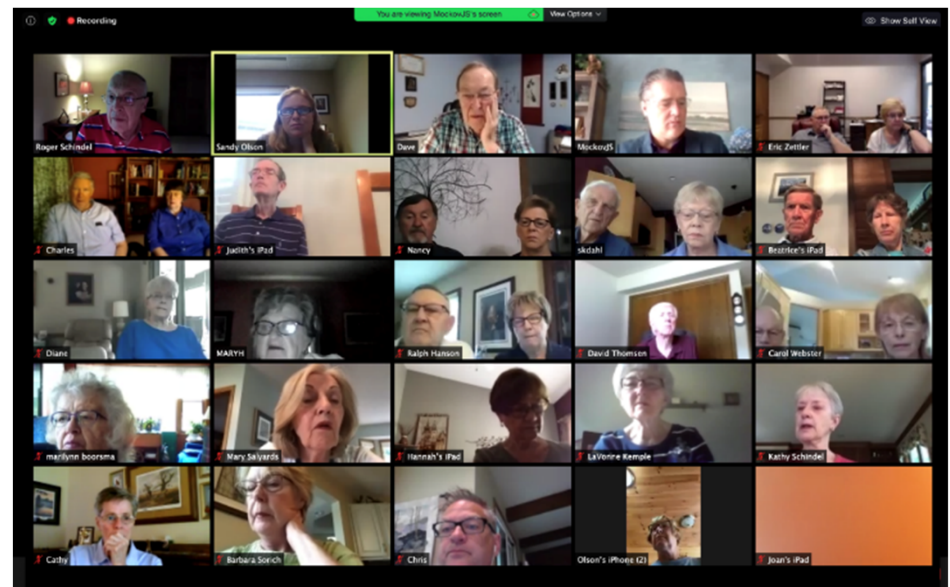
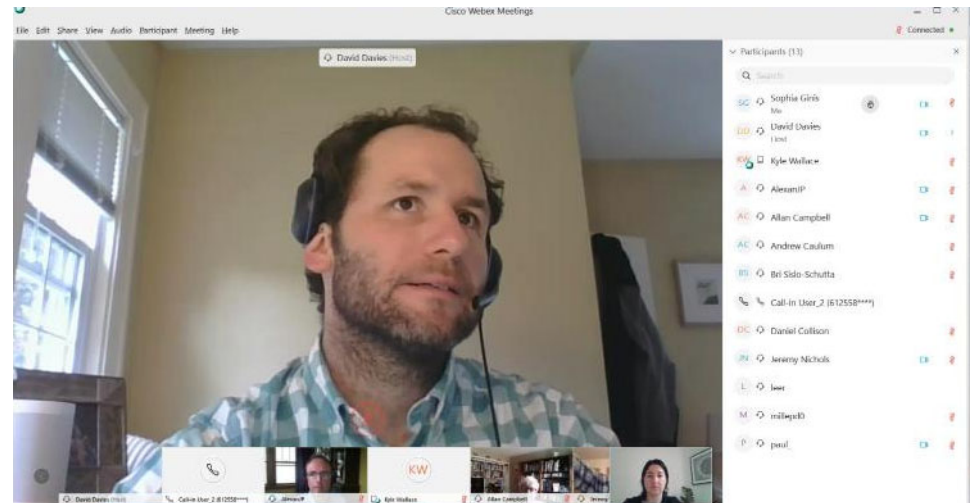
\*People of Color and Indigenous People (POCI) & Women participation from 6/1/20 - 1/31/2021

# Communications & Outreach Update

Sam O'Connell  
Sr. Manager, Community Affairs

# 2020 Construction Communications

- Construction updates: 16,600+ subscribers; 46% open rate
- 24-hour construction hotline: 270 calls in 2020
  - 612-373-3933
- Hundreds more non-hotline calls and emails from community members to outreach staff

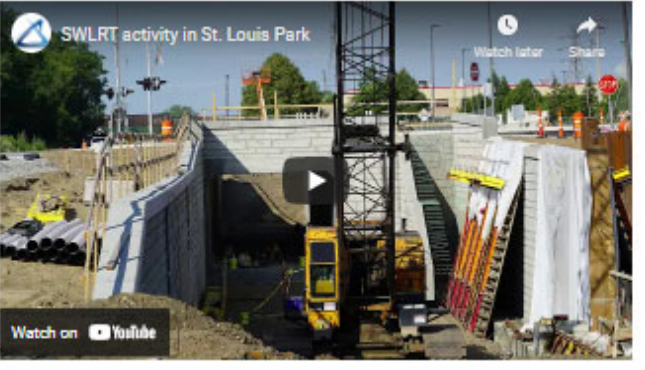


# Construction Communications

- Construction Information Workgroups:
  - Eden Prairie: 8 meetings
  - Minnetonka: 7 meetings
  - Hopkins: 4 meetings
  - St. Louis Park: 6 meetings
  - Minneapolis: 9 meetings
- 2021 Highlights:
  - February/March: Virtual community townhalls highlighting 2021 construction activities
  - Expanded use of social media to highlight construction progress
  - Return to in-person events when it is safe to do so

# 2021 Community Construction Videos

- Eden Prairie
- Minnetonka
- Hopkins
- St. Louis Park



# Stay Updated!

Online:

[SWLRT.org](http://SWLRT.org)

Twitter:

@SouthwestLRT

Flickr:

[flickr.com/photos/metcouncil/albums](https://www.flickr.com/photos/metcouncil/albums)

Facebook:

@MetropolitanCouncil

Instagram:

@southwest\_lrt

