

# Community Designations

2050 Regional Development Guide

Raya Esmaili, AICP, Senior Planner

---

June 8, 2022



# Why are they important?

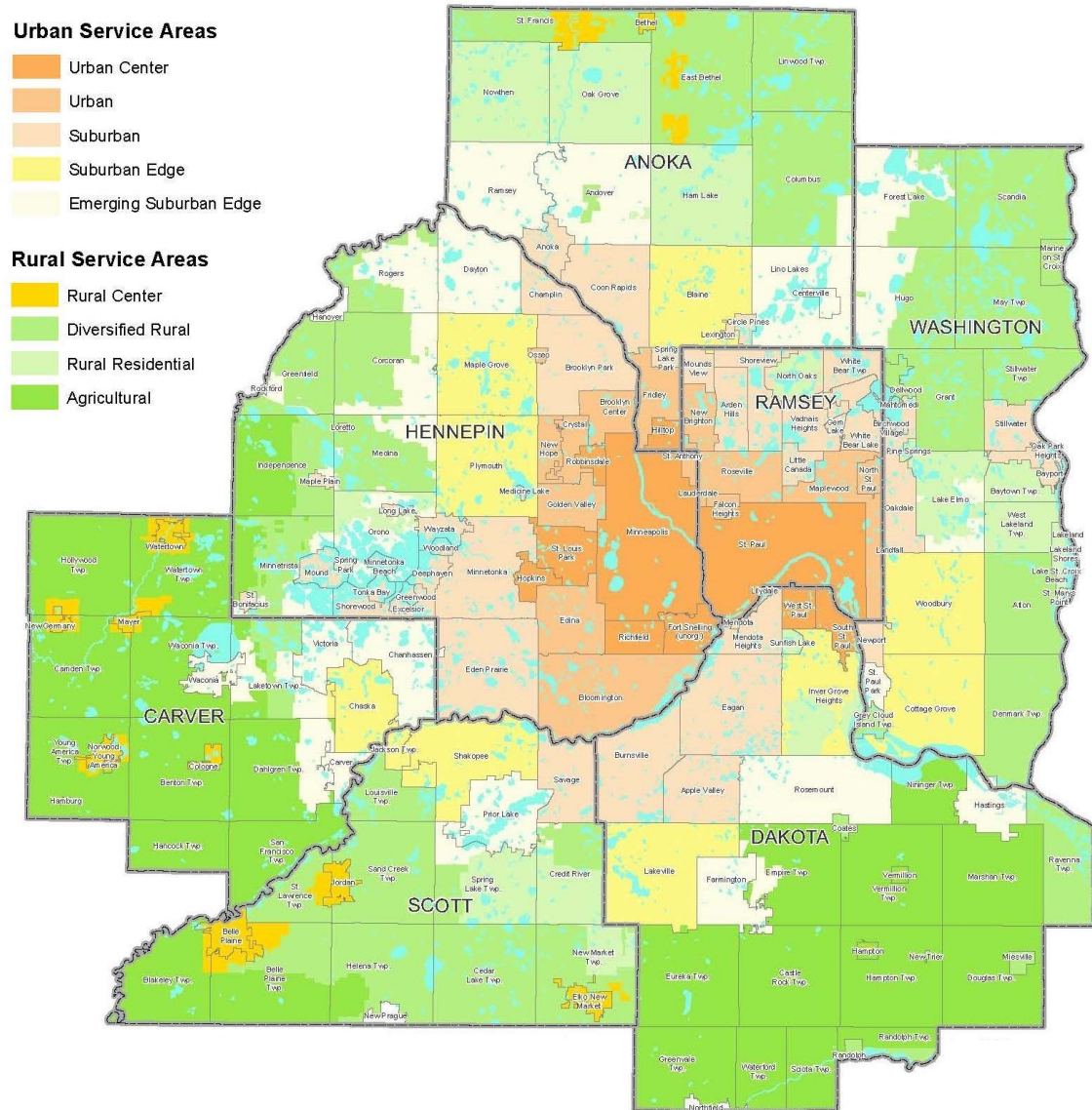


## Background

- Further regional policy outcomes
- Plan and implement regional policies at the local level
- Basis for land use policies and density expectations
- Recognize diversity and commonality of communities in the region
- Guide growth in areas with urban infrastructure
- Protect agricultural land and natural amenities

# Thrive MSP 2040

1. Metropolitan Urban Service Area (MUSA)
2. Percentage of developable land
3. Age of the housing stock
4. Intersection density
5. Long-term Wastewater Service Area



# Process

## Iterative process throughout 2022

### Engagement

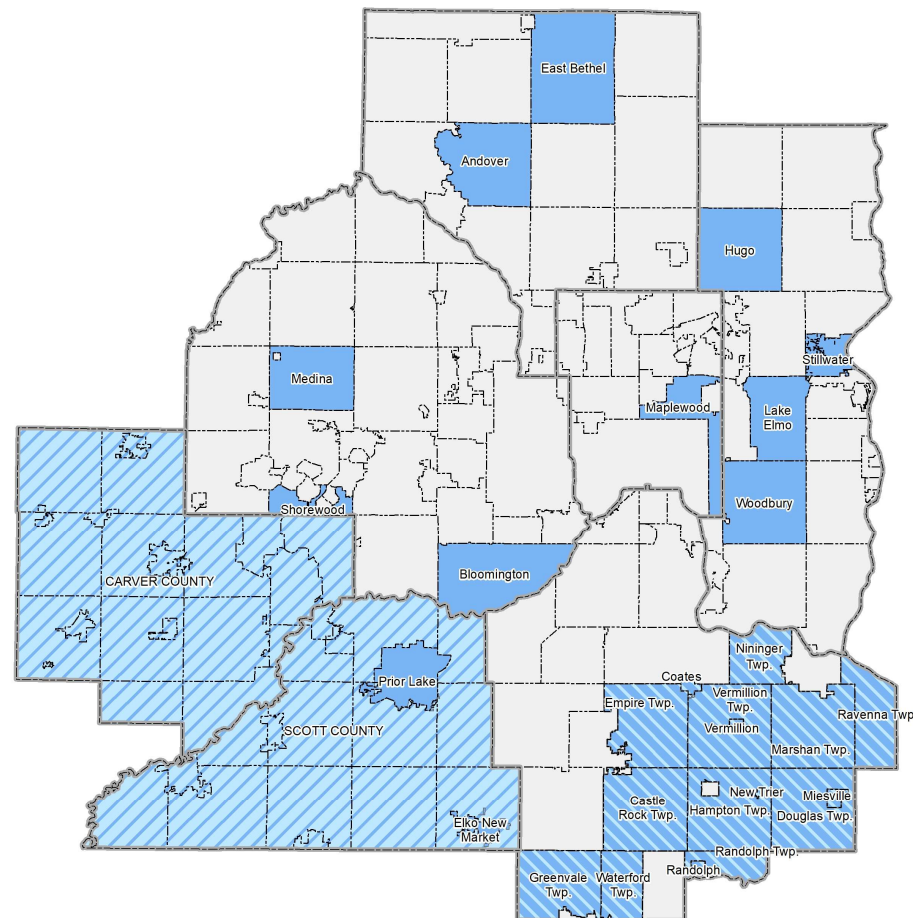
- Stakeholder Engagement
  - External partners
  - Internal technical staff
  - Other Committees
- Coordination with other regional planning efforts

### Analysis

- Evaluate current community designations
- Review and adjust previous approaches
- Analyze variables
- Conduct a spatial analysis

# External Focus Group

- City of Andover
- City of Bloomington
- City of East Bethel
- City of Elko New Market
- City of Hugo
- City of Lake Elmo
- City of Maplewood
- City of Medina
- City of Prior Lake
- City of Shorewood
- City of Stillwater
- City of Woodbury
- Carver County
- Scott County
- Bolton & Menk Consulting  
(Dakota County Collaborative)



# Internal Focus Group



## Representatives from a variety of areas

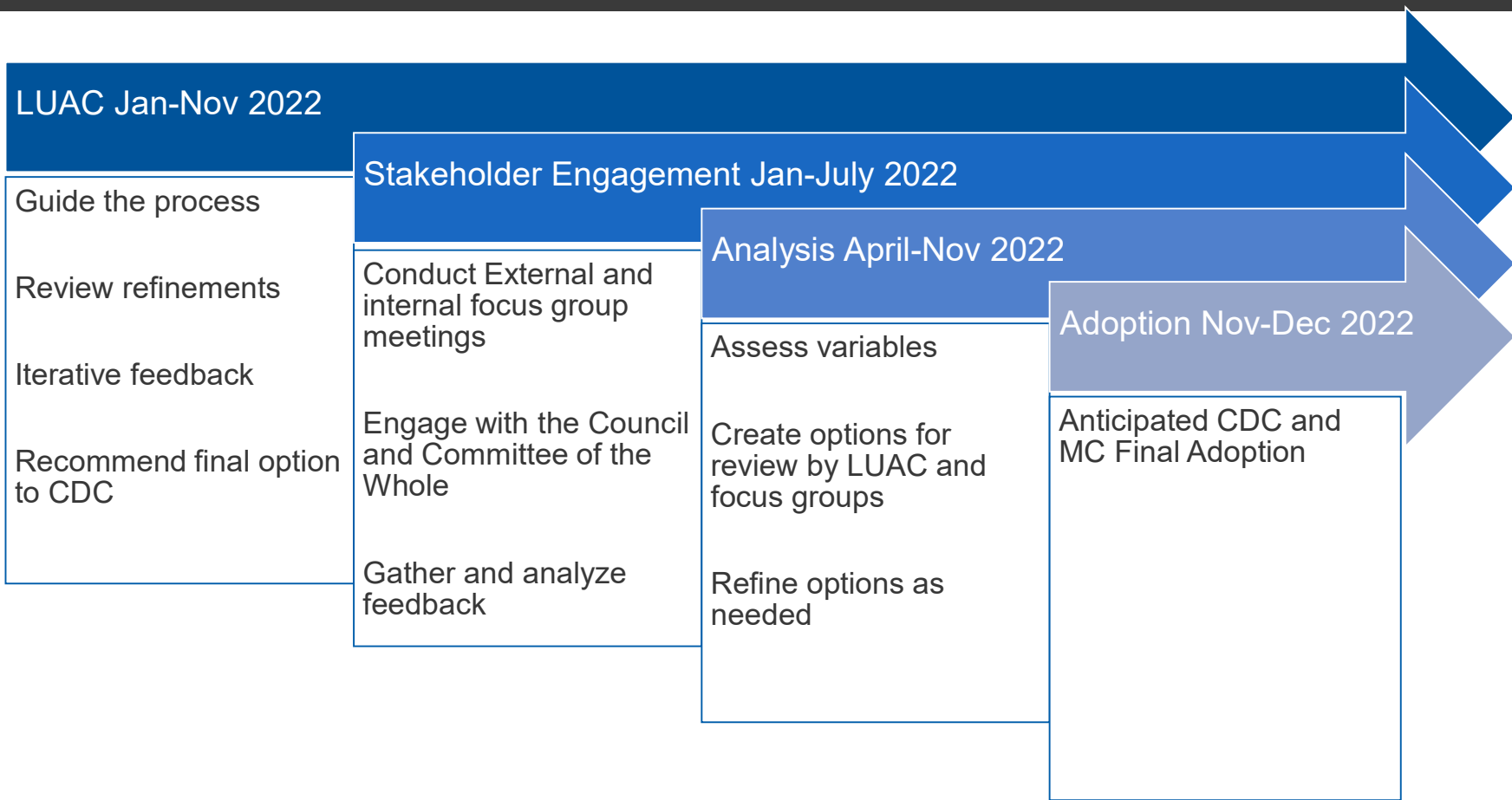
- Land Use
- Transportation
- Regional Parks
- Wastewater
- Surface Water
- Water Supply
- Transit
- Housing
- TOD
- Equity
- Research

# What did we hear?



- Refine existing variables, such as developable areas
- Consider preservation of natural resources
- Explore addressing climate concerns
- Consider water supply and sensitive water areas
- Coordinate efforts upfront
- Consider compact development policies
- Add more flexibility within a community designation
- Consider consequences and unintended outcomes
- Ensure simple and easy to implement approaches

# Timeline





# Deliverables





For more  
information

Raya Esmaeili, Senior Planner  
[raya.esmaeili@metc.state.mn.us](mailto:raya.esmaeili@metc.state.mn.us)  
651.602.1616

Paul Hanson, GIS Coordinator  
[paul.hanson@metc.state.mn.us](mailto:paul.hanson@metc.state.mn.us)  
651.602.1642

Debra Detrick, Planning Analyst  
[debra.detrick@metc.state.mn.us](mailto:debra.detrick@metc.state.mn.us)  
651.602.1327

