

Comprehensive Plan Composite: Planning for Aging

December 8, 2021

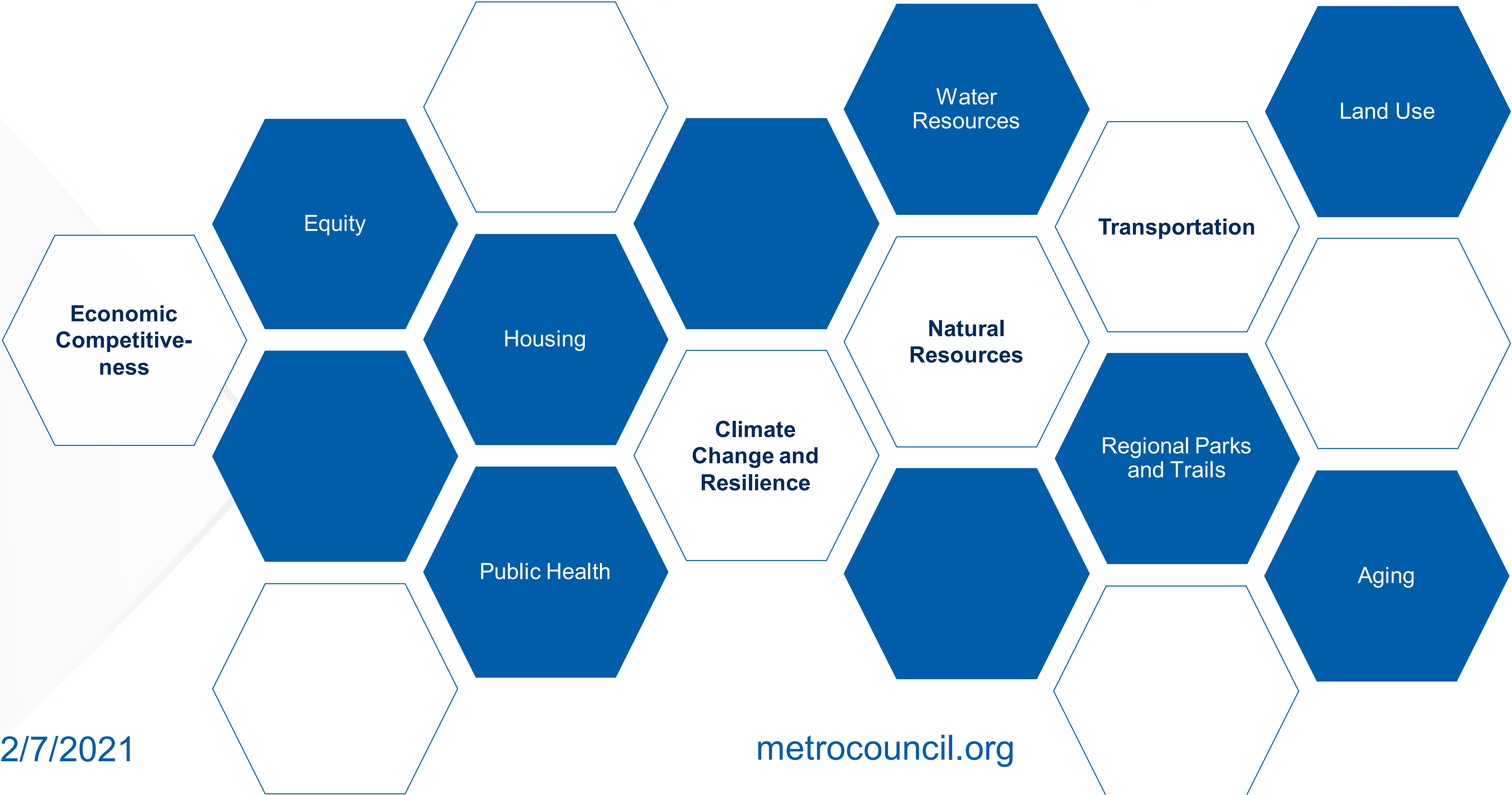
Metropolitan Council – Information Item



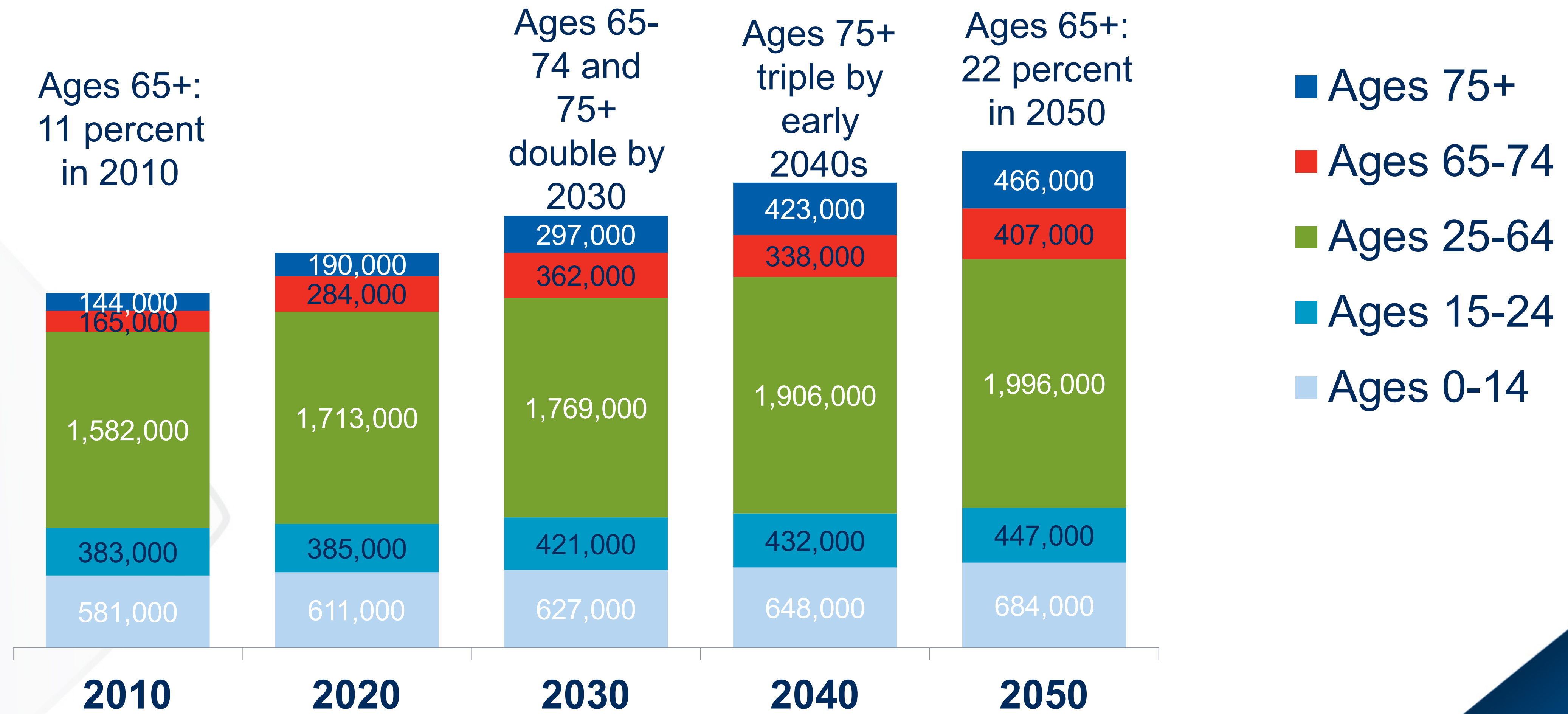
Regional Planning Questions



Comp Plan Composite Headlines



Older adults are the region's fastest growth demographic group



Source: 2010 population from Census Bureau; 2020-2050 from Metropolitan Council regional forecast (2021)

Age-Friendly Comp Plan Assessment

- Purpose of Age-Friendly Tracking: a baseline to inform technical resources



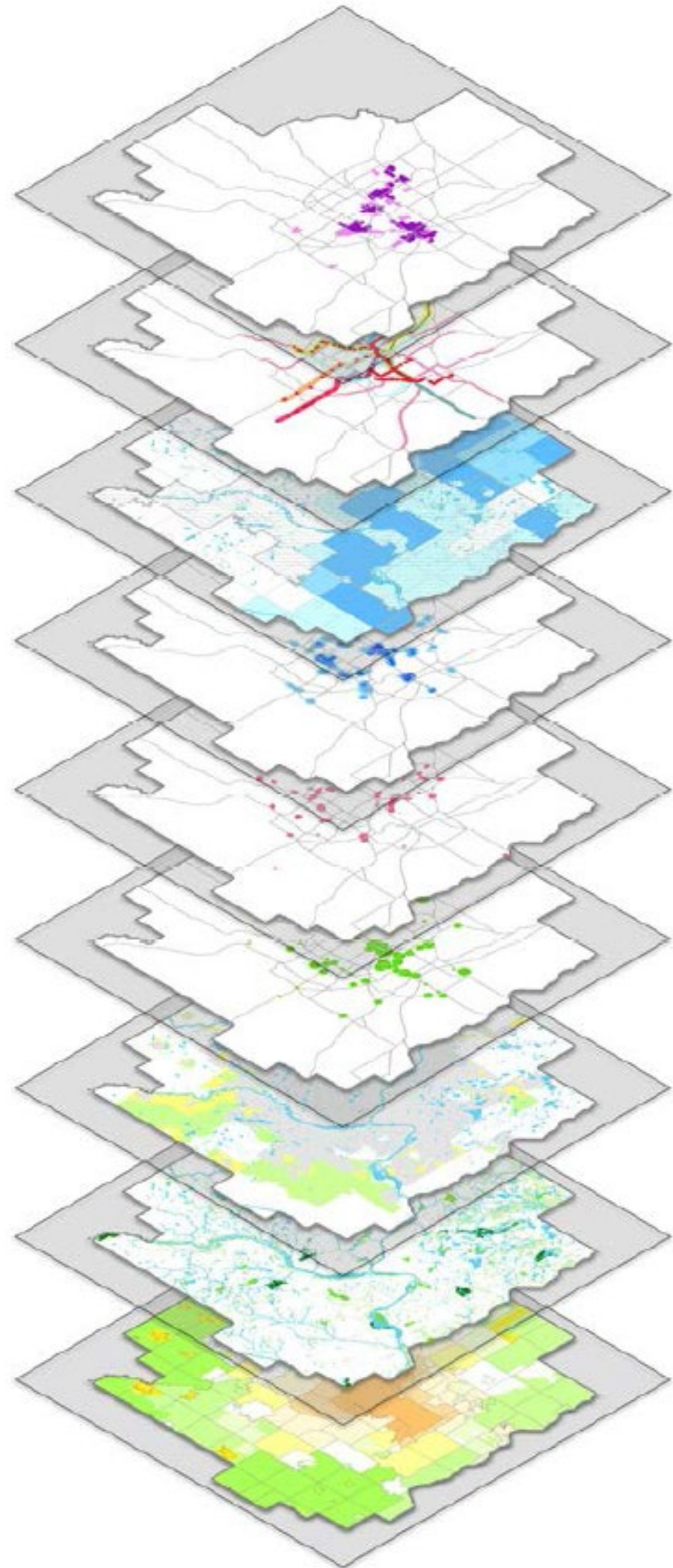
Reviewed the most recent copy of all 2040 comprehensive plan



Key words: senior, aging, older adults, age/aging in place, age-friendly

Also, accessory dwelling units, guest homes, empty nester, accessibility, Alzheimer, Memory, all ages, elderly, empty nester, Baby Boomer, universal design

Discussion in 2040 Plans



- **Demographic Trends**
- **Housing**
- **Transportation/Transit**
- **Parks/Recreation**
- **Health/Wellness**

Housing



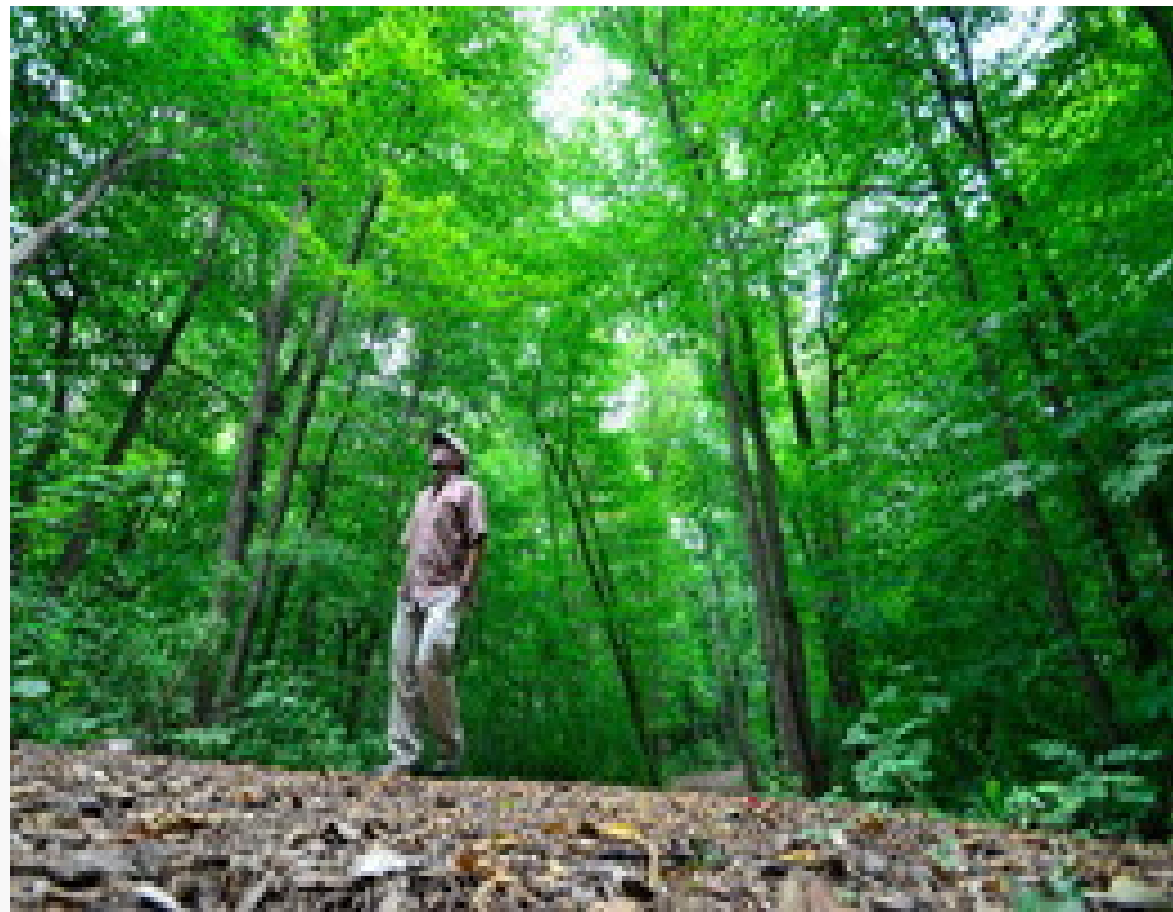
- Aging in Place
- Lifecycle Housing/Diverse Housing Stock
- Affordability
- Multi-Family/Mixed Use

Transportation/Transit



- Increased transit needs for seniors
- Accessibility
- TOD to support senior households

Parks/Recreation



- Parks and trails for all users
- Accessibility/wayfinding
- Senior Centers - programming



Health/Wellness



Source; Let's go fishing website



Source; Shakopee 2040 Comp Plan



Source; Little Canada 2040 Comp Plan

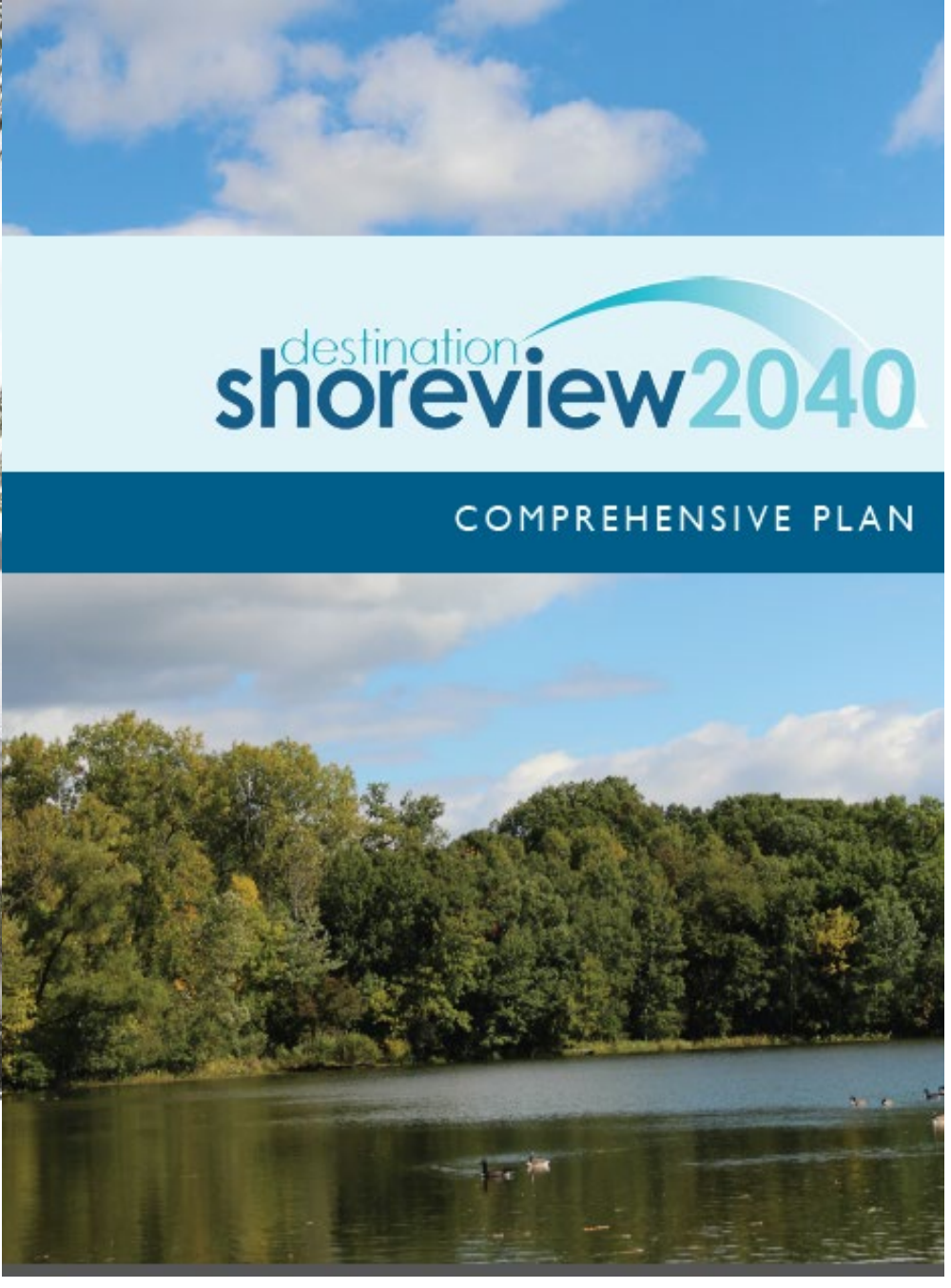
- Connectedness through parks, activities, programming
- Active Living, walkability
- Workforce – opportunities and new demands

Comprehensive Plan Examples



Age-Friendliness

Maplewood is a community where individuals and families of all ages are welcomed, included, and supported. This begins with providing a wide-range of safe, affordable housing that can serve the needs of those wishing to relocate to the community, as well as those who would like to remain as they age. The community then seeks to provide meaningful ways to participate and be active, through employment, volunteerism, programs, education, and recreation. Age-friendliness addresses accessibility, walkability, and safety in the public realm as well.



Guiding Principles

	HEALTH		RESILIENCE
	EQUITY		AGE-FRIENDLINESS

Emerging Topics / Trends

APA
American Planning Association
Planning Advisory Service
Creating Great Communities for All

November/December 2021

PAS MEMO

Planning for Dementia-Friendly Communities

By Jonathan Paul Katz

Many planners have thought and written about the numerous impacts of America's aging population. Rightly so, given that the country's population over the age of 65 is set to increase by 54 percent over the next two decades (Federal Interagency Forum on Aging Related Statistics 2017).

Much of this discussion has focused on the visible impacts of a "graying" community—from the need for more wheelchair-accessible homes to changing desires about retirement communities (Dunham-Jones and Williamson 2011; Stafford 2021). Yet one impact has not been discussed, despite its salience for community planning and the well-being of older adults. That aspect is the increase of people with dementia in American communities.



Figure 1. Benches, safe sidewalks, distinct buildings, and a welcoming streetscape all play a role in helping older adults with dementia (Jonathan Paul Katz)

In the United States, about one in 10 older adults—roughly five million people—have some form of dementia (The Economist 2020). The aging of the population, however, means that this number will likely grow to about eight to 10 million people over the next 20 years (Federal Interagency Forum on Aging Related Statistics 2017).

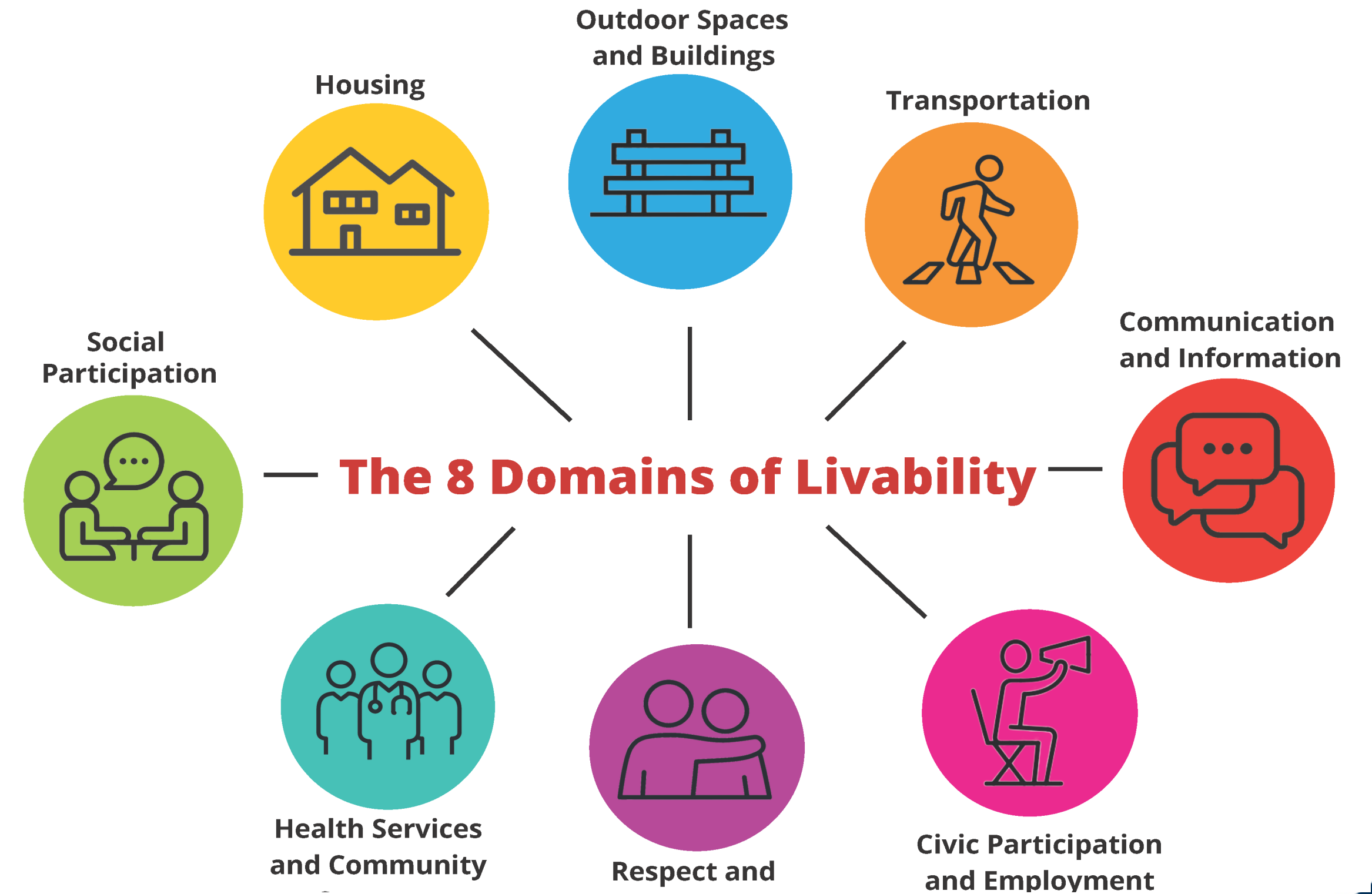
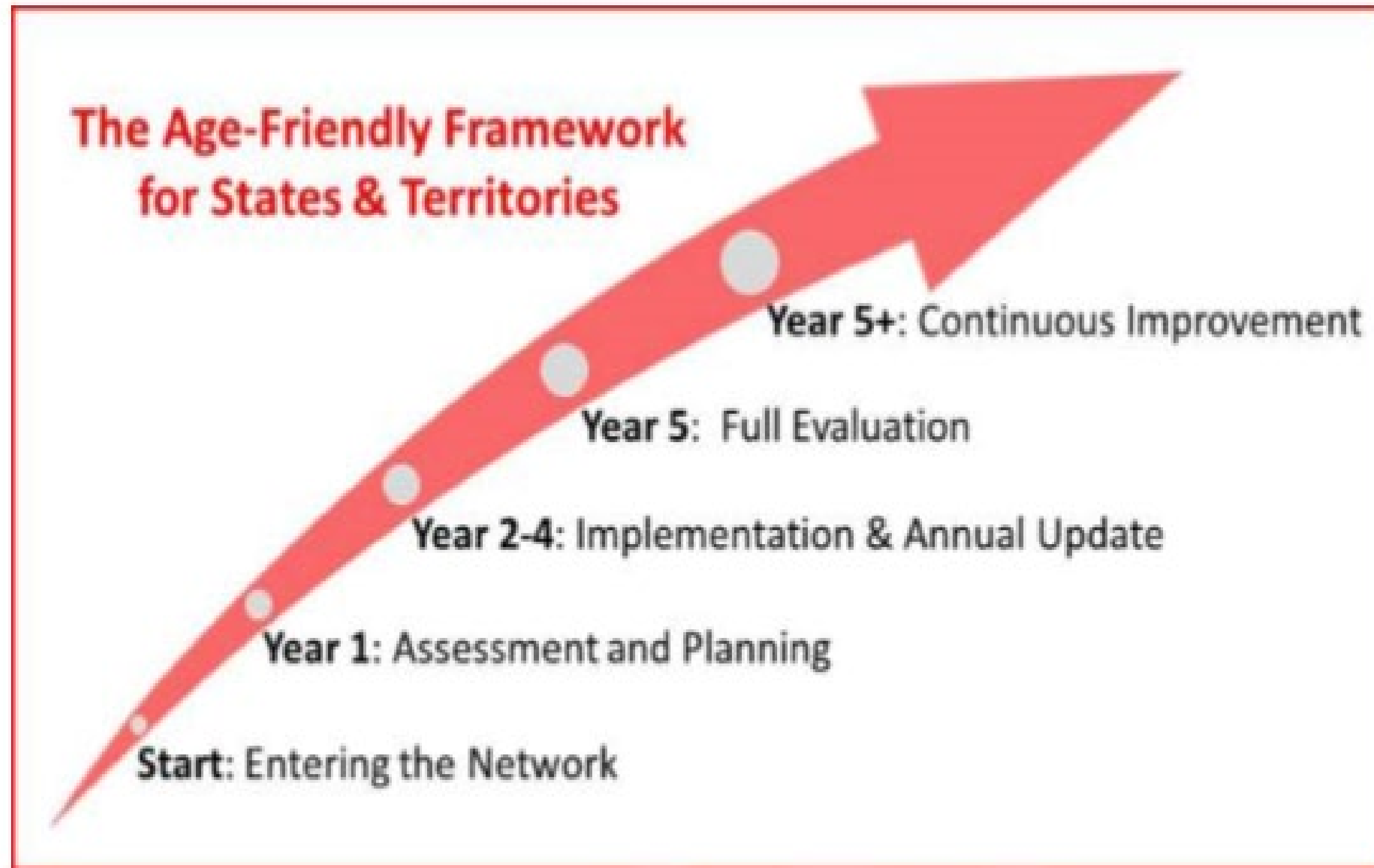
People with dementia will be a growing population in almost every community, and will be increasingly present in public spaces and local neighborhoods (Przydatek 2014; Su 2013). Though they are often assumed to live in congregate facilities such as nursing homes, about 90 percent of people with dementia live in community settings, most often with family members (Sustasis Collaborative 2020; Turner and Morken 2016). Many experts predict that an even higher share will "age in place" as time goes on, as the disproportionate impact of COVID on nursing homes has made many families wary of placing loved ones in institutions (Abelson 2021). People with dementia and their care partners will instead seek services, environments, and opportunities in the communities where they already live. Indeed, many funding and support structures encourage people with dementia to live in their communities that does not always suit people with dementia. Dementia affects the way people interact with and in spaces, and many people with memory loss find typical ways of interacting with the built environment or other people difficult or impossible. The way that planners plan neighborhoods, facilities, and services can make it easier or harder for people with dementia to use, live in, or go to and from these places (Figure 1). As is the case with many other people with disabilities, people with dementia are disabled by the environments around them (Biglieri 2015; Turner and Morken 2016; McGettrick and Williamson 2015).

Many planners simply have not thought about dementia—but they should. When the needs of people with dementia are considered, places become safer and easier to navigate. A dementia-friendly community allows people with dementia to have a safe, accessible, and dignified life in the community (Hanley 2021; Turner and Morken 2016). This can be empowering, especially in a society that is biased against people with

American Planning Association | planning.org

- Dementia-Friendly Communities
- Age-Friendly Advisories/Commissions
- Age-Friendly Communities

WHO/AARP Age-Friendly Framework: States/Communities



Minneapolis, Maple Grove, Hennepin County, Brooklyn Park, Oakdale

**Emergency Preparedness

Age-Friendly Minnesota

STATE OF MINNESOTA

Executive Department



Governor Tim Walz

Executive Order 19-38

Establishing the Governor's Council on an Age-Friendly Minnesota

December 2019

- Aging is a reality that we all face, whether it's our parents and grandparents, our friends and neighbors, or ourselves.
- Everyone wants to live in a community that is respectful, inclusive, and supportive of our contributions and needs. This executive order coordinates efforts across agencies and sectors to move us all toward an age-friendly Minnesota.

-Governor Tim Walz

- The older adults in our lives are critical to building vibrant communities in every corner of Minnesota.
- When we promote healthy aging and engage with older adults as essential to the social, economic, and civic fabric of our state, we pursue better health care, transportation, housing and childcare, and social services for all Minnesotans.

- Lt Governor Peggy Flanagan

Governor Council Age-Friendly MN

Governor's Council for an Age-Friendly MN

Legislation on Age-Friendly MN passes in Special Session

Council on Age-Friendly MN - 2024



Steps taken to enroll in the AARP/WHO Network of Age-Friendly Communities and States

8 State Agencies
Metropolitan Council – CM Vento
1 Tribal Nation
5 Community Members



Questions

Angela Torres, Local Planning Assistance, Manager

Angela.torres@metc.state.mn.us , 651-602-1566

Freya Thamman, Local Planning Assistance, Planning Analyst

Freya.Thamman@metc.state.mn.us, 651-602-1750

Gabriela Olvera, Local Planning Assistance, Associate Planner

gabriela.olvera@metc.state.mn.us, 651-602-1832