

Emerging from the Pandemic



Brian Ryks
CEO of the Metropolitan Airports Commission

Metropolitan Council
January 26, 2022

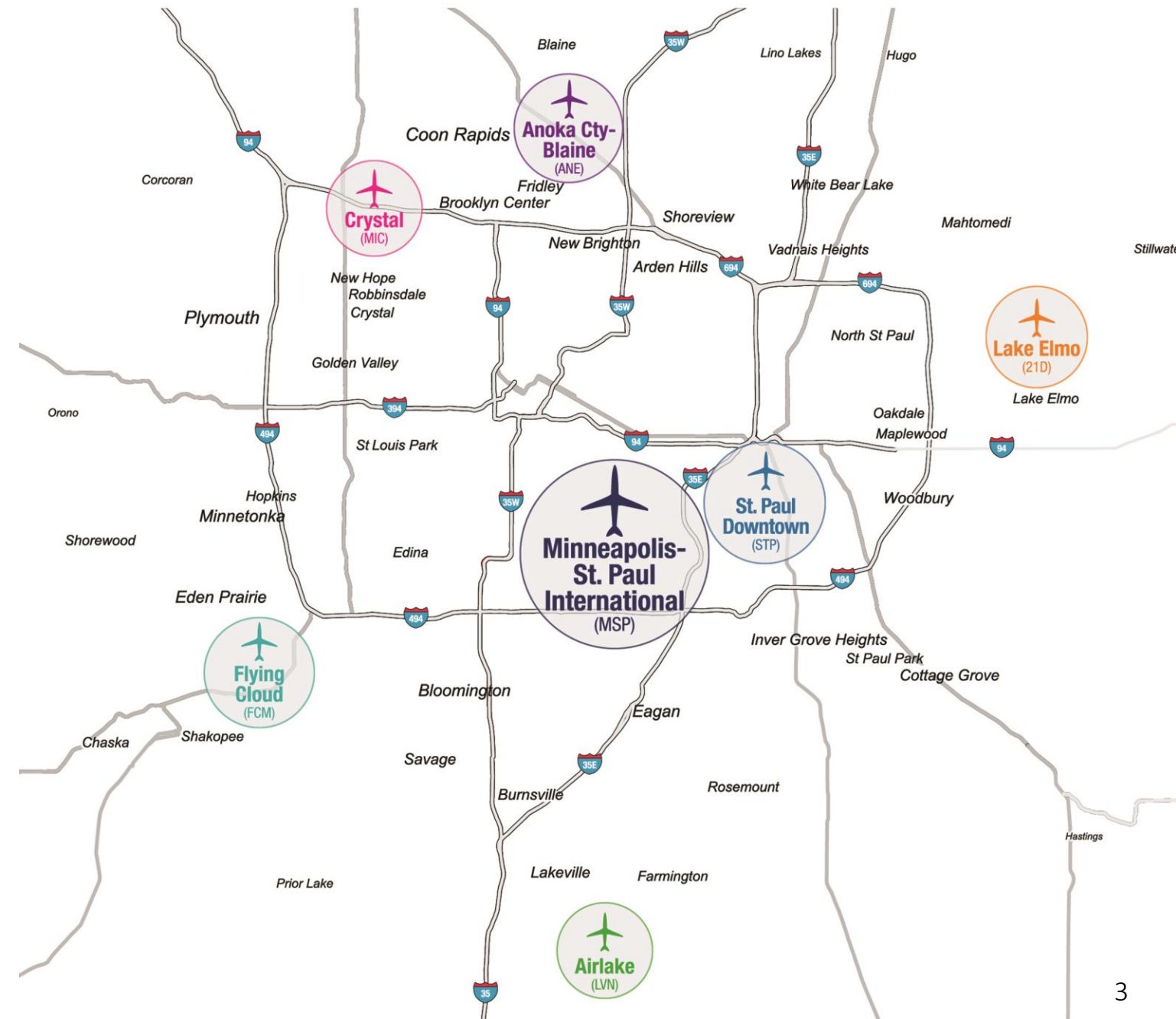
1

Metropolitan Airports Commission



The MAC Airport System

- The MAC was established in 1943 by the State of Minnesota
- The MAC first operated Wold-Chamberlain Field (now MSP Airport) on the west side of the metro, and Holman Field on the east side (now St. Paul Downtown Airport)
- With 7 airports, MAC operates one of the largest airport systems in America



Board of Commissioners



Commission Chair
Rick King



District A
Carl Crimmins



District B
Braj Agrawal



District C
James Lawrence



District D
Timothy Baylor



District E
James Deal



District F
Rodney Skoog



District G
Richard Ginsberg



District H
Yodit Bizen



City of Minneapolis
Leili Fatehi



City of St. Paul
Ikram Koliso



Outstate St. Cloud
Patti Gartland



Outstate Duluth
Donald Monaco



Outstate Thief River Falls
Dixie Hoard



Outstate Rochester
Randy Schubring



Metropolitan Airports Commission



Operations and Funding

- 690+ employees
- Operates much like a city, with its own:
 - Police
 - Fire
 - 9-1-1 dispatch
 - Building inspection
 - Planning and Development
 - Maintenance Department
 - Finance Department
- Funded by rents and fees paid by airport users, not by local income or property taxes



2

COVID Financial Impacts



Pandemic – Industry Impact

- U.S. airports = losses of \$40 billion
March 2020-March 2022
- MAC losses = \$218 million in 2020
- MAC projected revenue decline of \$126 million in 2021
- 2022 Revenues- est. \$50 million below 2019
- Deferred \$300 million in projects in 2021 and 2021



Pandemic - Relief and Partner Support

CARES ACT + Coronavirus Response and Relief Supplemental Grants

- MSP - \$158 million allocated to date
- Other MAC airports - \$678,000 allocated to date

American Rescue Plan Act of 2021 Grant

- MSP- \$118 million
- MSP concessions- \$16.4 million
- Other MAC airports - \$621,000

Relief for our Partners

- Airlines - \$68 Million
- Concessions, auto rental and passenger services businesses - \$35 million



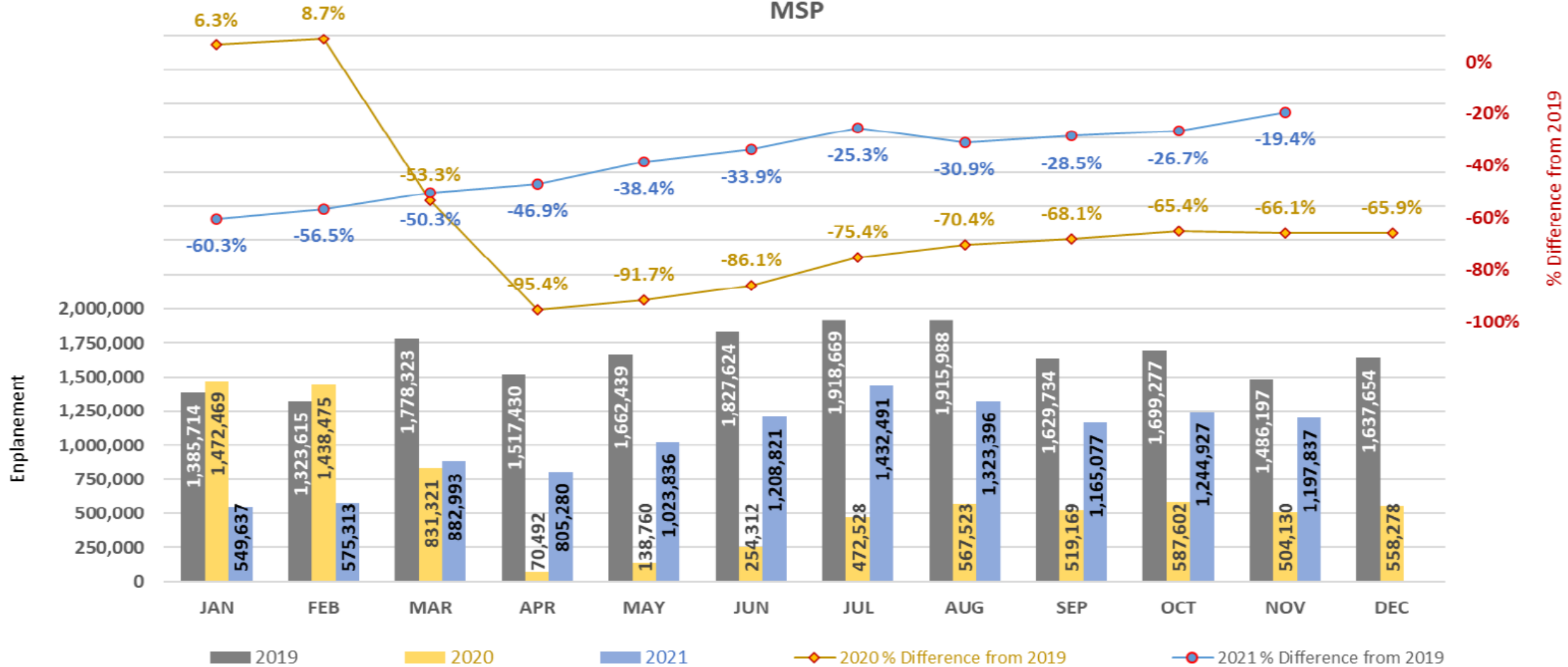
3

Passengers, Operations and Air Service

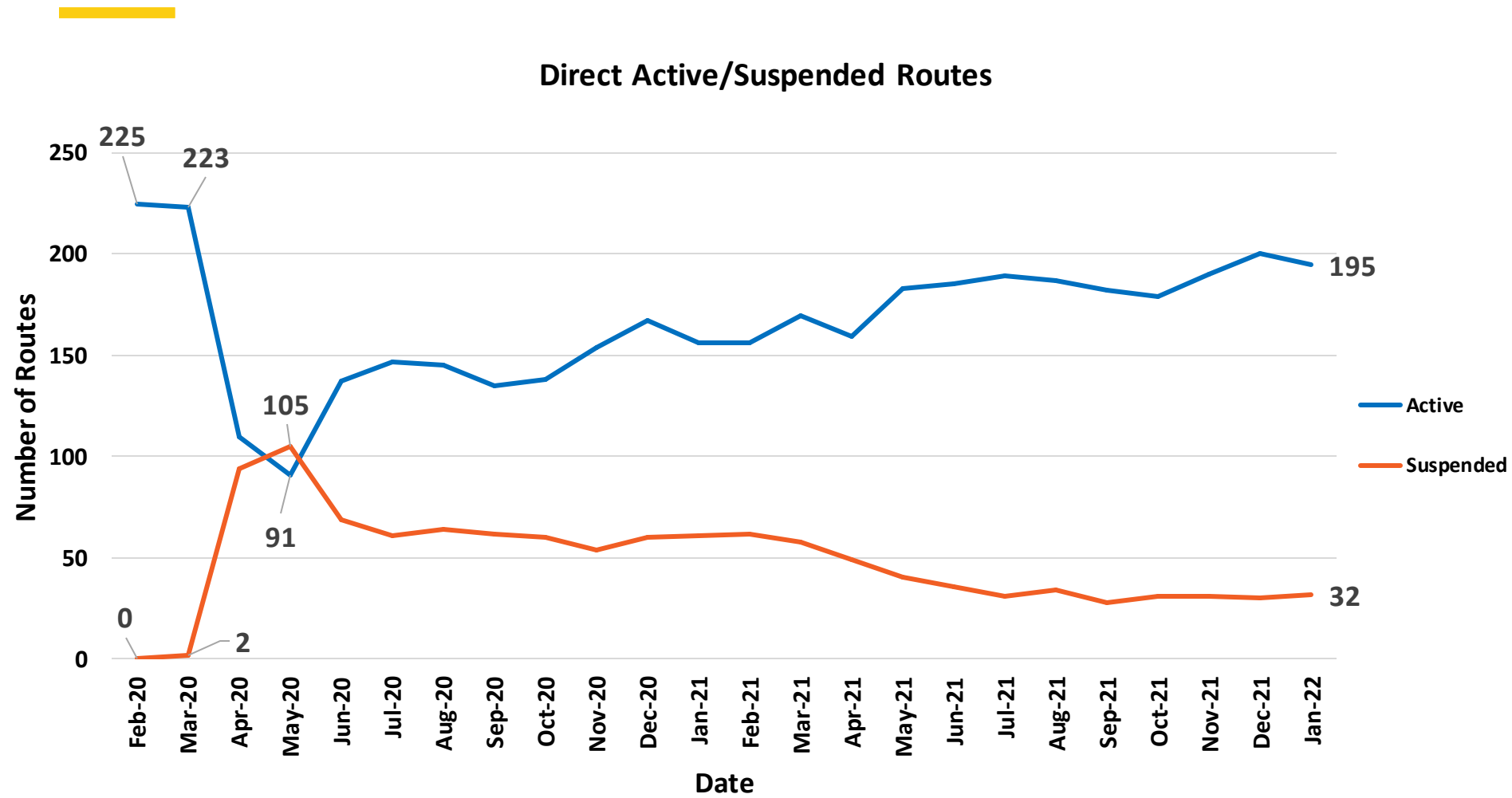


MSP in 2021

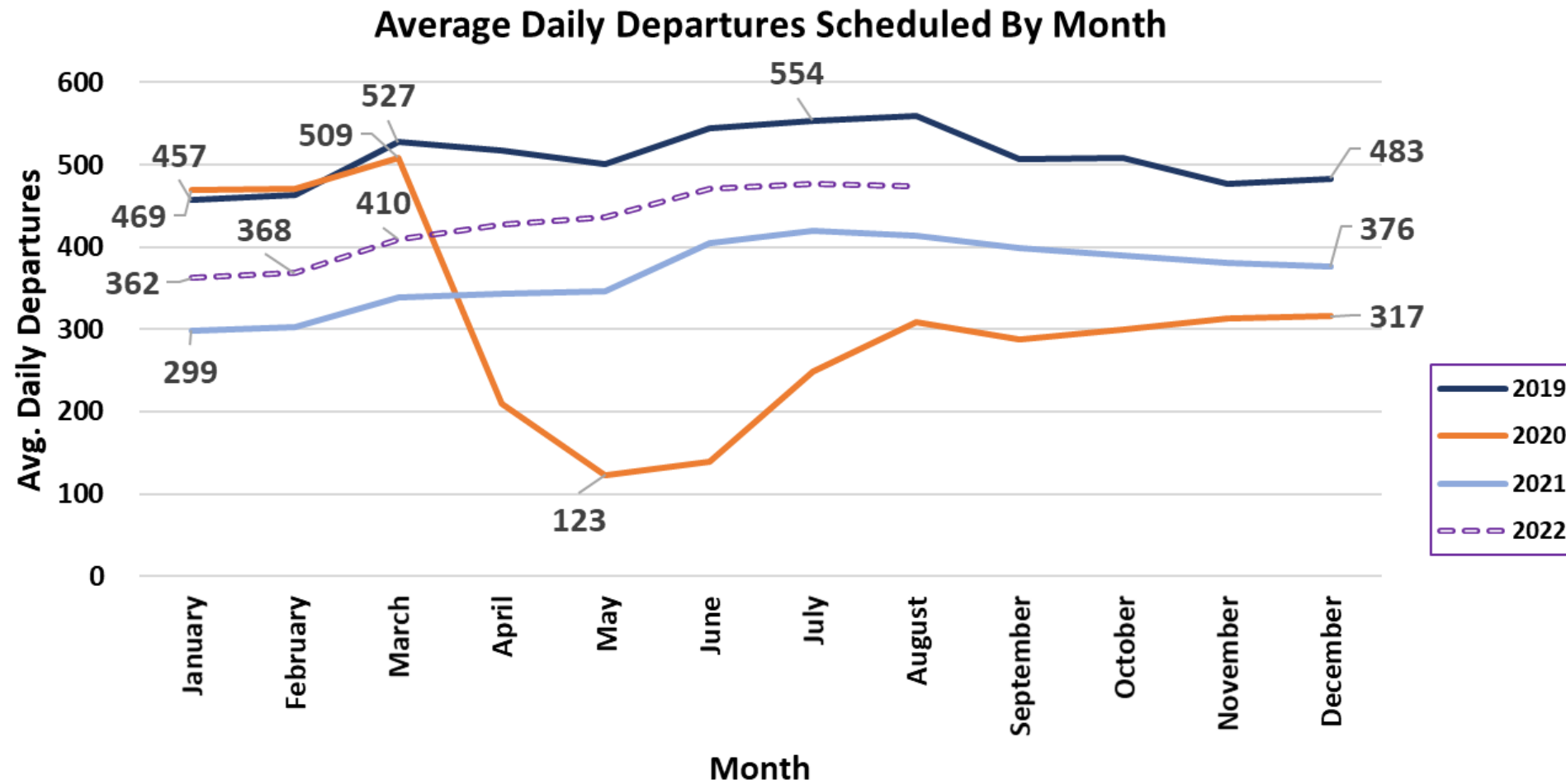
COVID-19 IMPACT ON MONTHLY ENPLANEMENT
MSP



Pandemic Recovery - Air Service



Pandemic Recovery - Air Service



Pandemic Recovery - Reliever Airport System Operations



Airport	2021 Final	2020 Final	2020 - 2021 Change
Lake Elmo (21D)	32,645	29,799	9.6%
Anoka (ANE)	74,657	70,852	5.4%
Flying Cloud (FCM)	131,593	124,382	5.8%
Airlake (LVN)	36,259	31,314	15.8%
Crystal (MIC)	37,845	39,509	-4.2%
St. Paul Downtown (STP)	39,196	30,188	29.8%
	352,195	326,044	8.0%



4

Health Safety Program

TRAVEL CONFIDENTLY **m**sp™



Robust Cleaning



Hand Sanitizing



Face Covering



Social Distancing



Shields



Touchless Parking

- TSA security directive requires face coverings to be worn inside airports, on aircraft and on other modes of transportation.
- Enforcement of federal mask regulations extended through March 2022.





Best-in-Class Cleaning/Infectious Disease Prevention

GBAC Star™ Program

ACI Airport Health Accreditation Program

- Minimize the spread of COVID-19 and combat future health threats
- Require the highest standards of facility cleanliness, safety and operational measures
- Consistent global standards build consumer confidence in airport health safety to help push for sustained recovery in air travel.



COVID-19 Testing & Vaccines

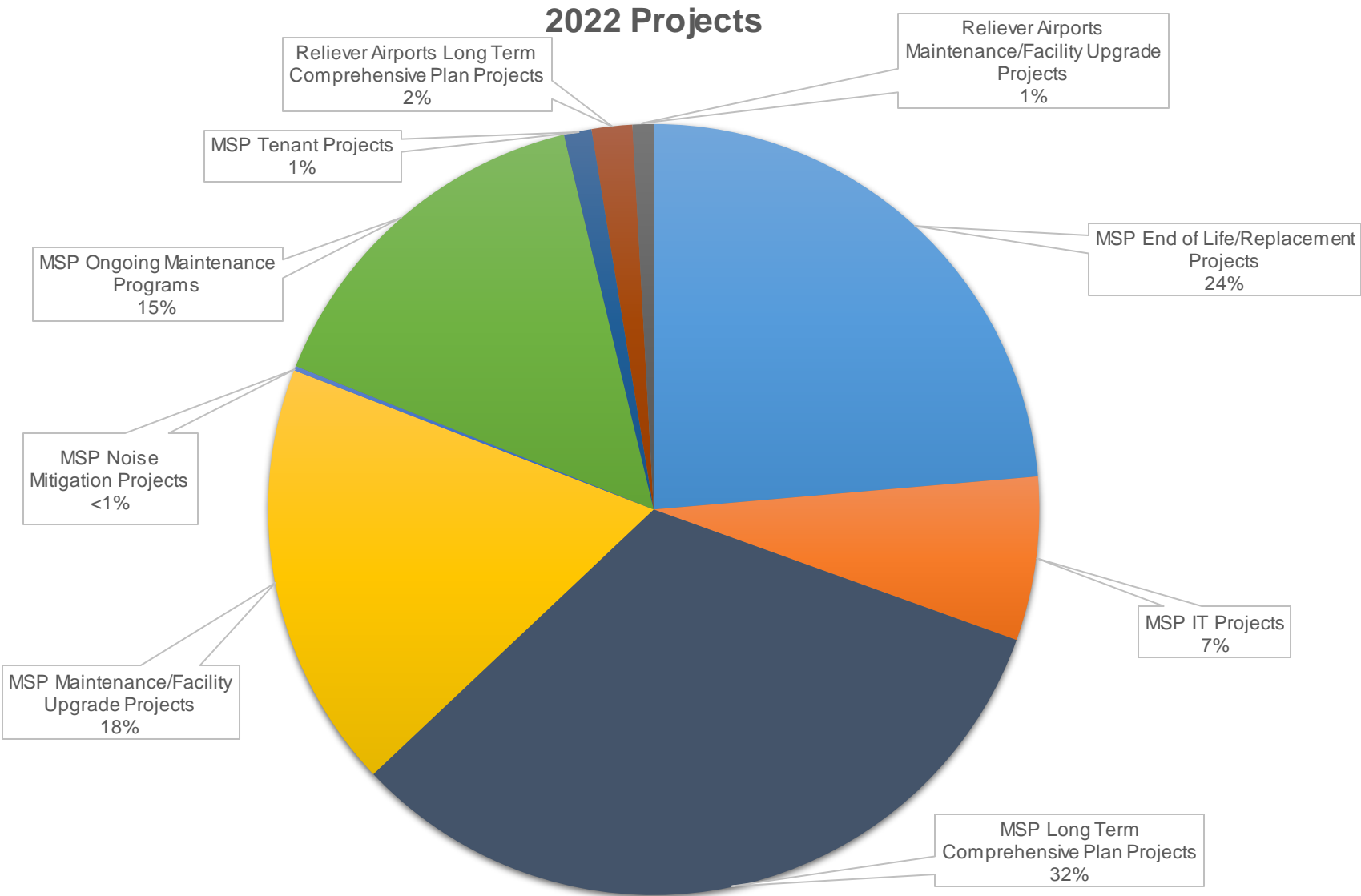
- MDH COVID-19 Saliva Test Site at MSP
- MSP Terminal 1 COVID-19 Wandertest rapid-testing site opened for passengers
- MN vaccination sites open at Terminal 1 and Terminal 2. Appointments via Minnesota Vaccine Connector: vaccineconnector.mn.gov

5

2022 Projects



CIP Projects



2022 CIP Budget:
\$267.3 million

vs. 2021 CIP Budget of
\$185 million

Pandemic - Federal Infrastructure Deal



- \$20 billion for airports over 5 years
- AIP entitlement formula funding= \$3 billion/year.
 - MSP would receive an estimated \$37.5 million in FFY2022 and FFY2023 with future enplanements determining funding in years 2024 to 2026
- GA airports would share \$520 million in funds based on projects included in FAA's National Plan of Integrated Airport Systems (NPIAS)
 - \$3,174,000 for MAC Relievers
- Terminal Development Projects = \$1 billion/year
 - MSP can compete for funding to replace aging infrastructure, increase ADA compliance or improve energy efficiency.

Aircraft Rescue & Firefighting Station | Safety & Security Center

PHASE 1 - ARFF

Airport Rescue and Fire Fighting (ARFF)
Station No. 2, Fitness Center/Storm
Shelter

- 2022 Construction Start
- CIP Amount = \$43,200,000
- Construction Budget = \$33,263,500
- Est. Federal Funds = \$16,000,000

PHASE 2 – Safety and Security Center

- Airport Police Department
- Emergency Communications Center
- Airside Operations
- Emergency Operations Center
- Airport Operations Center



Terminal 1 Ticketing and Baggage Claim



G Concourse Expansion and Delta Sky Club



Long-term Planning at MSP

- Consultants were re-engaged in late 2021 to continue tasks remaining on the Long-term Plan (LTP)
- First public draft- July 2022
- Forecast future activity
- Infrastructure needs to meet future demand
- Robust stakeholder engagement



Lake Elmo Improvements

- Phase 3: Paving of new Runway 14-32 in 2022
- 3,500 ft. long
- Existing runway will be converted to taxiway in next phase
- New lighting, signage and other airfield safety improvements



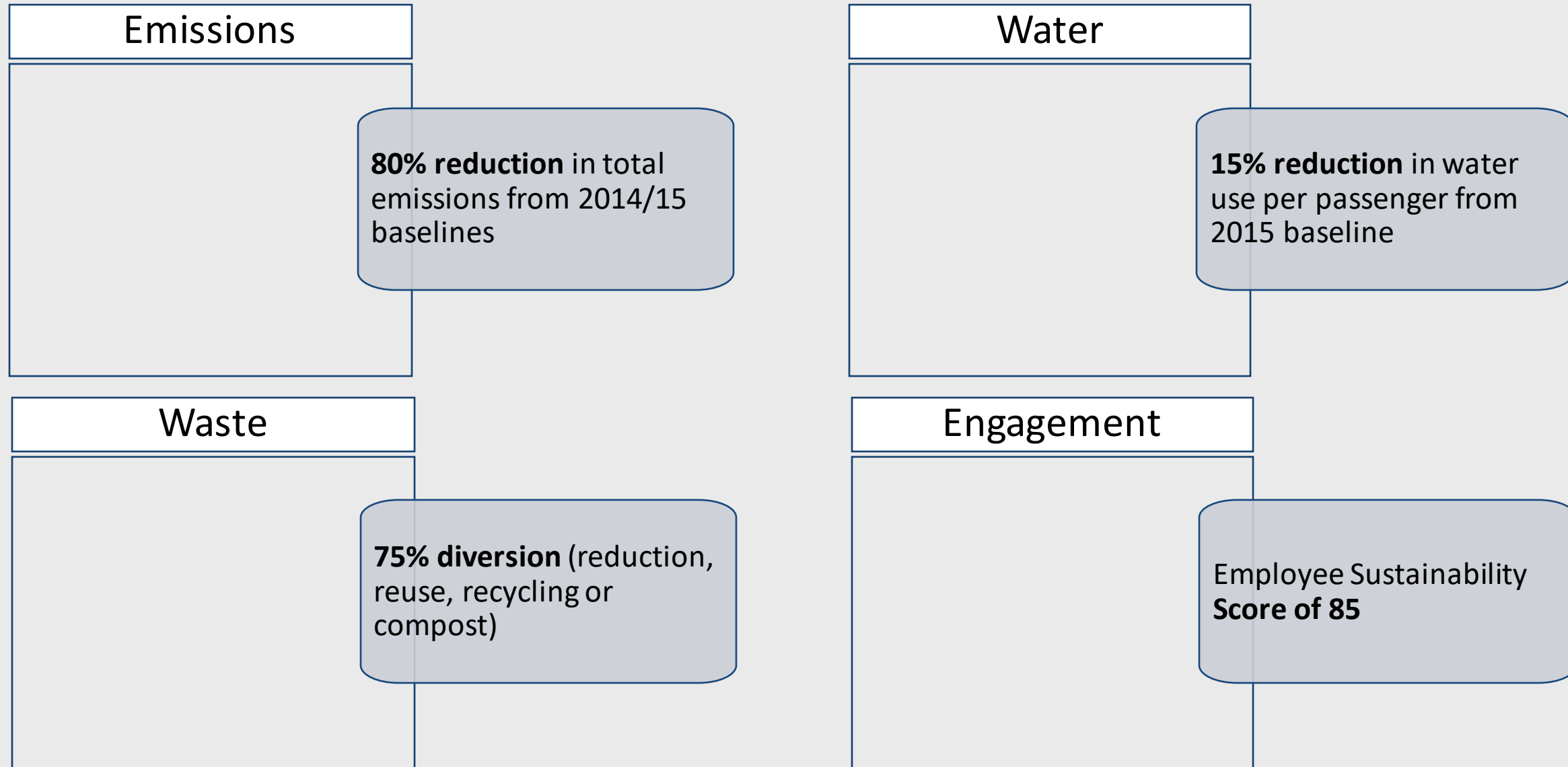
Long-term Planning at Flying Cloud

- Estimated 18-month process with first approvals in spring of 2023
- Forecast future activity
- Infrastructure needs to meet future demand
- Robust stakeholder engagement





MAC's 2030 Sustainability Goals



Thank You

INTERNATIONAL CHECK-IN

DELTA
AGENT ASSIST

SELF-TAGGED BAG DROP

SELF-TAGGED BAG DROP

SKY PRIORITY

TSA Pre✓
CLEAR
All Passengers
Less than 15 min

South Security Checkpoint
All Gates

SKY PRIORITY

mspairport.com

metroairports.org