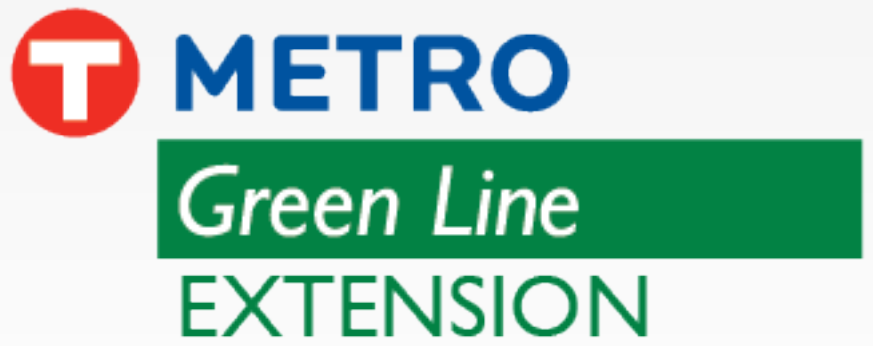


# Metropolitan Council Project Update



Wednesday June 22, 2022



# Today's topics

- Project Update
- Construction Update
  - Civil Construction
  - Systems
  - Franklin O&M Facility Modifications
- Public Involvement
- DBE & Workforce Update



# Project Update

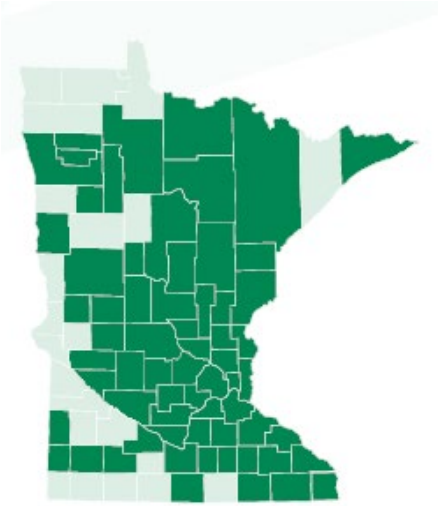
Jim Alexander  
Green Line Extension Project Director

# Statewide economic benefits

- Putting people to work:
  - More than 1.8 million hours worked
  - Paychecks for Minnesotans worth more than \$53.1 million and growing
  - Employing folks from 75% of counties statewide
  - \$134 million billed by Disadvantage and Business Enterprise companies (20.9%) for civil construction activities, exceeding the goal of 16%
  - Project will support 7,500 construction and construction related jobs and \$350 million in payroll to be reinvested in communities throughout the Twin Cities and the state

**65 of 87**

**Minnesota counties have someone bringing home a Green Line Extension paycheck**





# \$2+ Billion in Permitted & Planned Community Development

**Elevate At SouthWest Station, Eden Prairie**



**The Moline at Downtown Hopkins Station**



**Minnetonka Station at Opus Station**

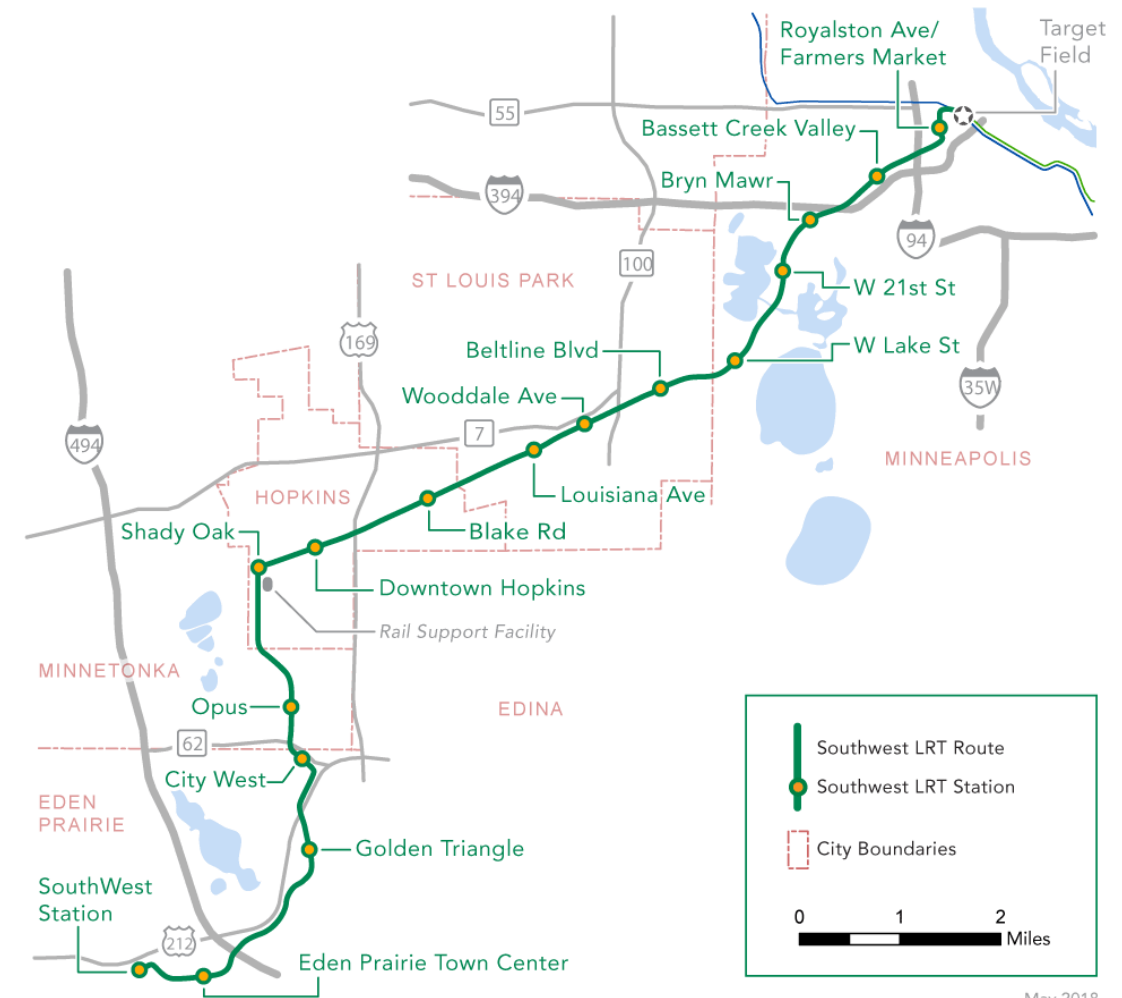


**Beltline Station Development, St. Louis Park**

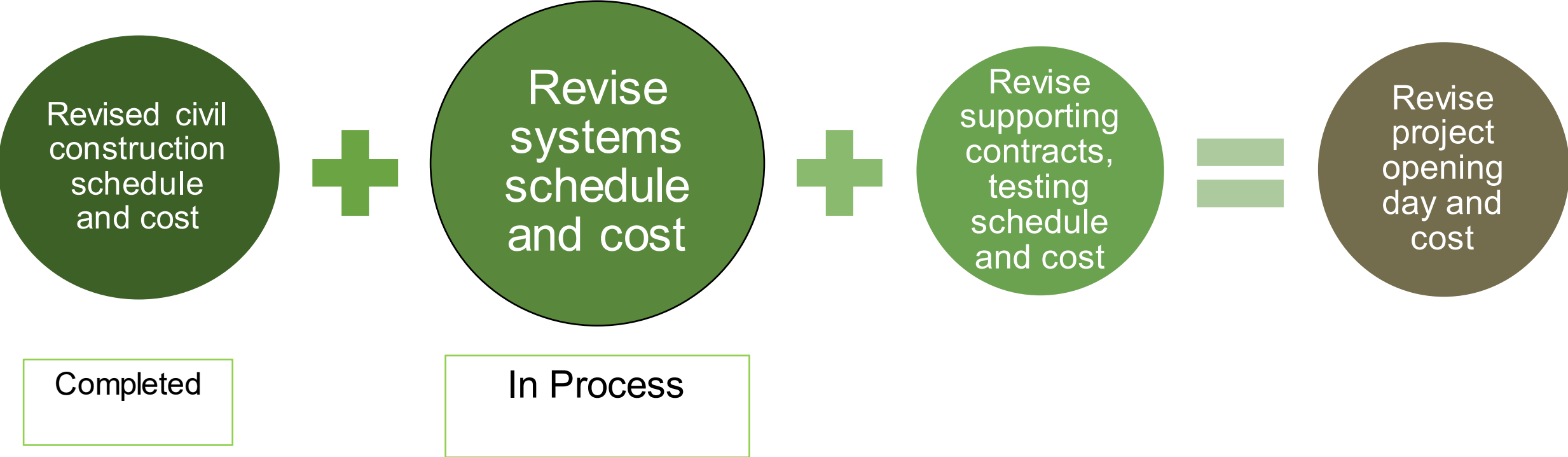


# Project scope

- 16 new LRT stations
- 44 significant structures:
  - 29 new bridges: LRT, pedestrian, roadway, freight
  - 7 existing bridges with modifications
  - 6 pedestrian tunnels
  - 2 cut and cover tunnels:
    - Highway 62 582 feet
    - Kenilworth 2,236 feet
- 15 at-grade LRT crossings; including 5 shared crossings with freight rail
- 131 retaining walls
- Track: ~182,000 TF
- 7.8 mi shared LRT and freight rail corridor
- Trail reconstruction



# Revised project schedule and cost process: Current step



# Construction Update



# LRT construction sequencing

✓ Done!



### Utilities

- Excavation
- Relocation / installation

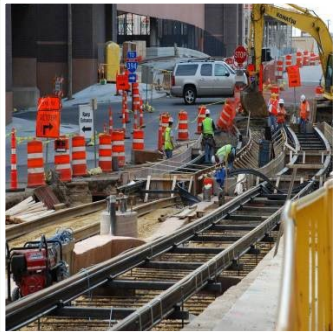
✓ Done!



### Site Prep

- Clear buildings
- Establish work zones, detours

>60% Complete



### Structures, track, stations

- Track beds
- Track
- Buildings
- Roadwork
- Trails

~2% Complete



### Systems

- Overhead catenary
- Safety & security
- Ticket vending

Prior to revenue service



### Testing

- Safety
- Comms
- Operator training

Outreach & Communications



# SouthWest Station, Eden Prairie





# Eden Prairie Town Center Station





# Golden Triangle Station, Eden Prairie





# City West Station, Eden Prairie





# Opus Station, Minnetonka





# Shady Oak Station, Hopkins





# Downtown Hopkins Station





# Excelsior Boulevard LRT Bridge, Hopkins





# Wooddale Avenue Station, St. Louis Park





# Beltline Boulevard Station, St. Louis Park





# Kenilworth LRT Tunnel, Minneapolis





# Kenilworth LRT Tunnel, Minneapolis





# West 21<sup>st</sup> Street Station, Minneapolis





# Bryn Mawr Station, Minneapolis





# Bryn Mawr Pedestrian Bridge Section, Minneapolis





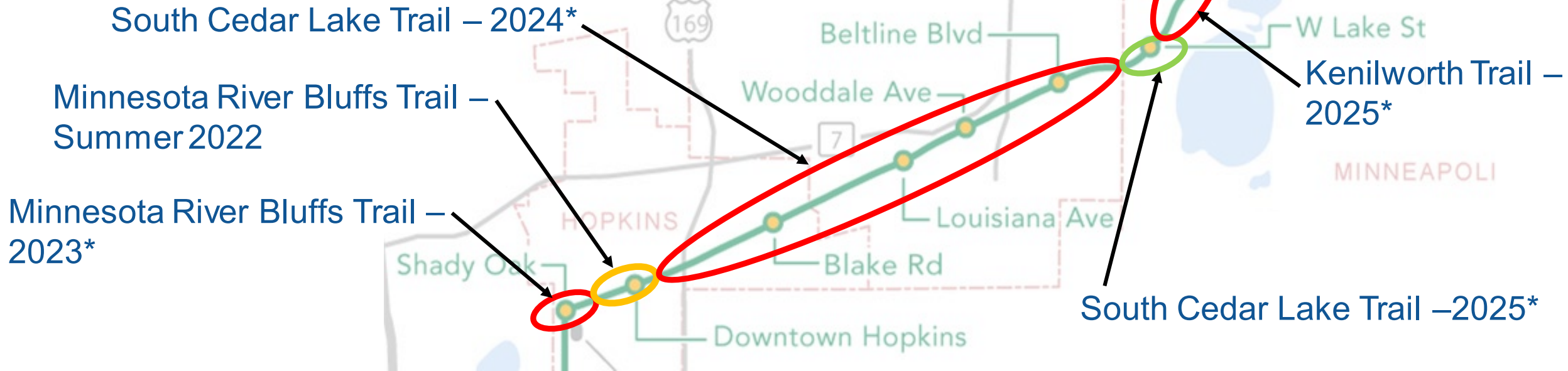
# Glenwood Avenue Road Bridge, Minneapolis





# Trails – anticipated reopening

-  Currently open – temporary condition
-  Currently closed – Opening 2022
-  Currently closed – Opening 2023-2025



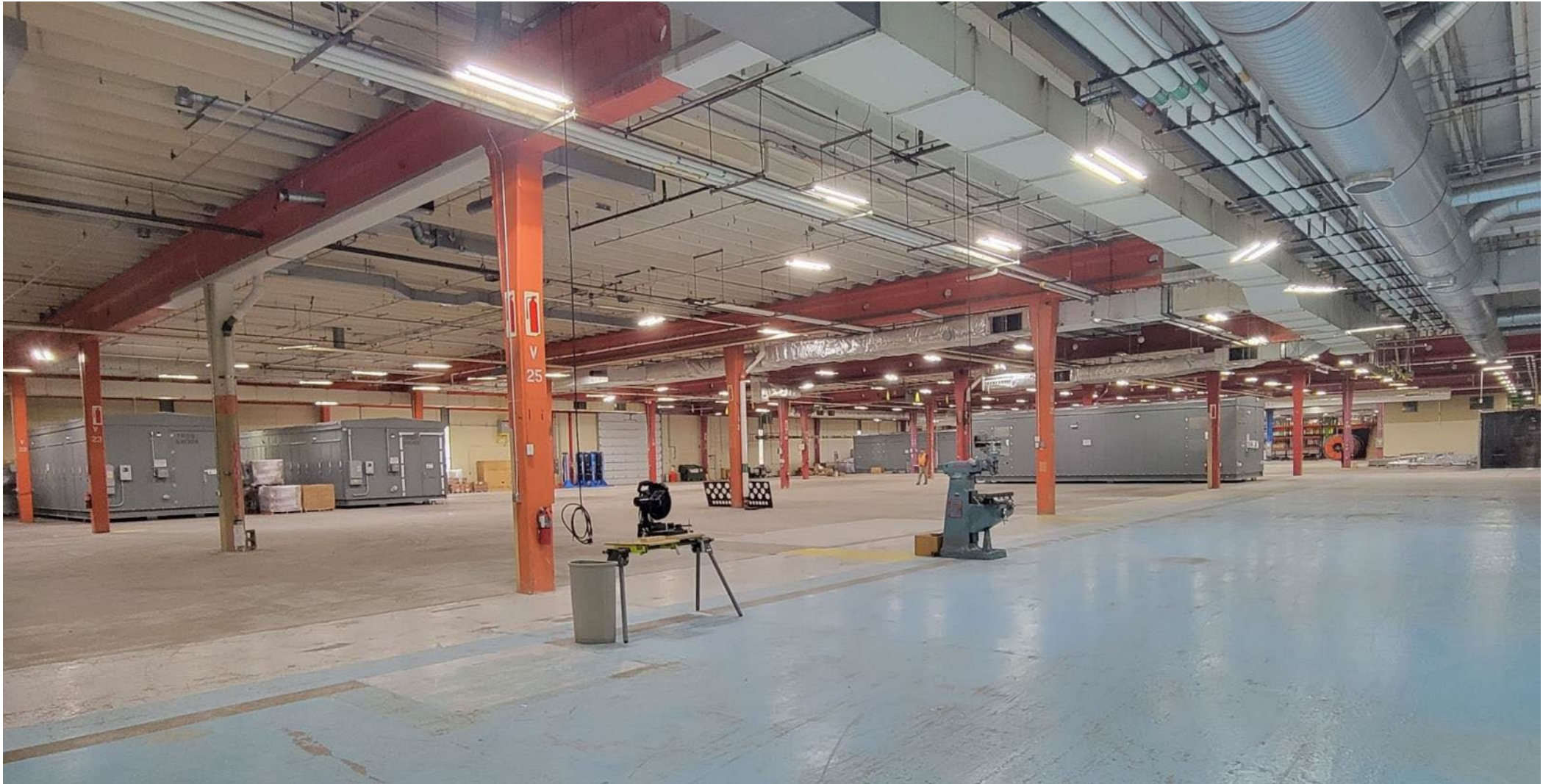
\*Based on Civil construction substantial completion dates. SPO will work with the contractor to improve on these opening dates, where possible.



# Systems Contract Work

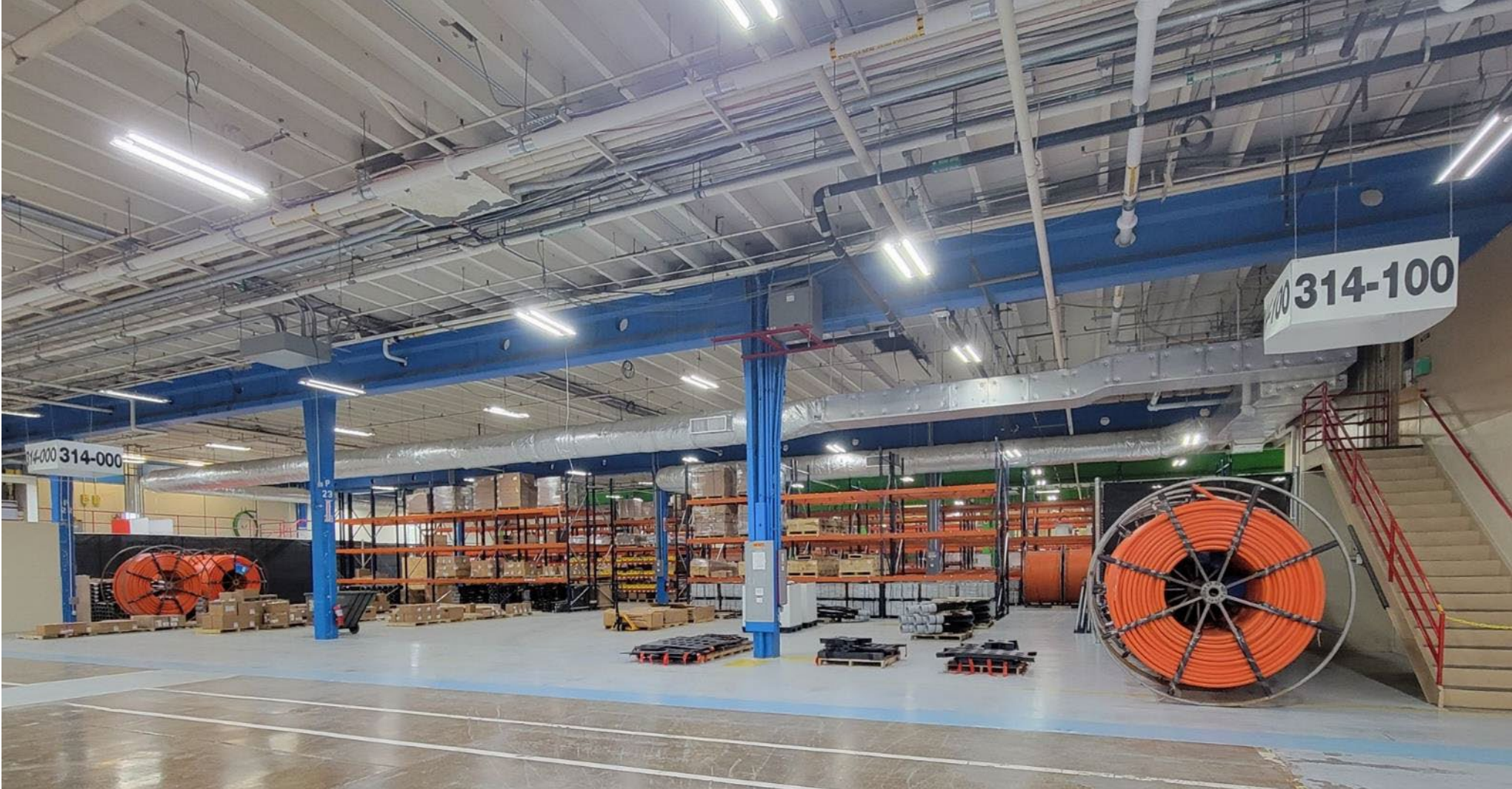


# Four TPSSs in Storage





# Systems Cable, Innerduct, Switch Machines, and other Wayside Equipment in Storage





# Franklin O&M Facility Modifications



# North Yard & Maintenance Bay Modifications



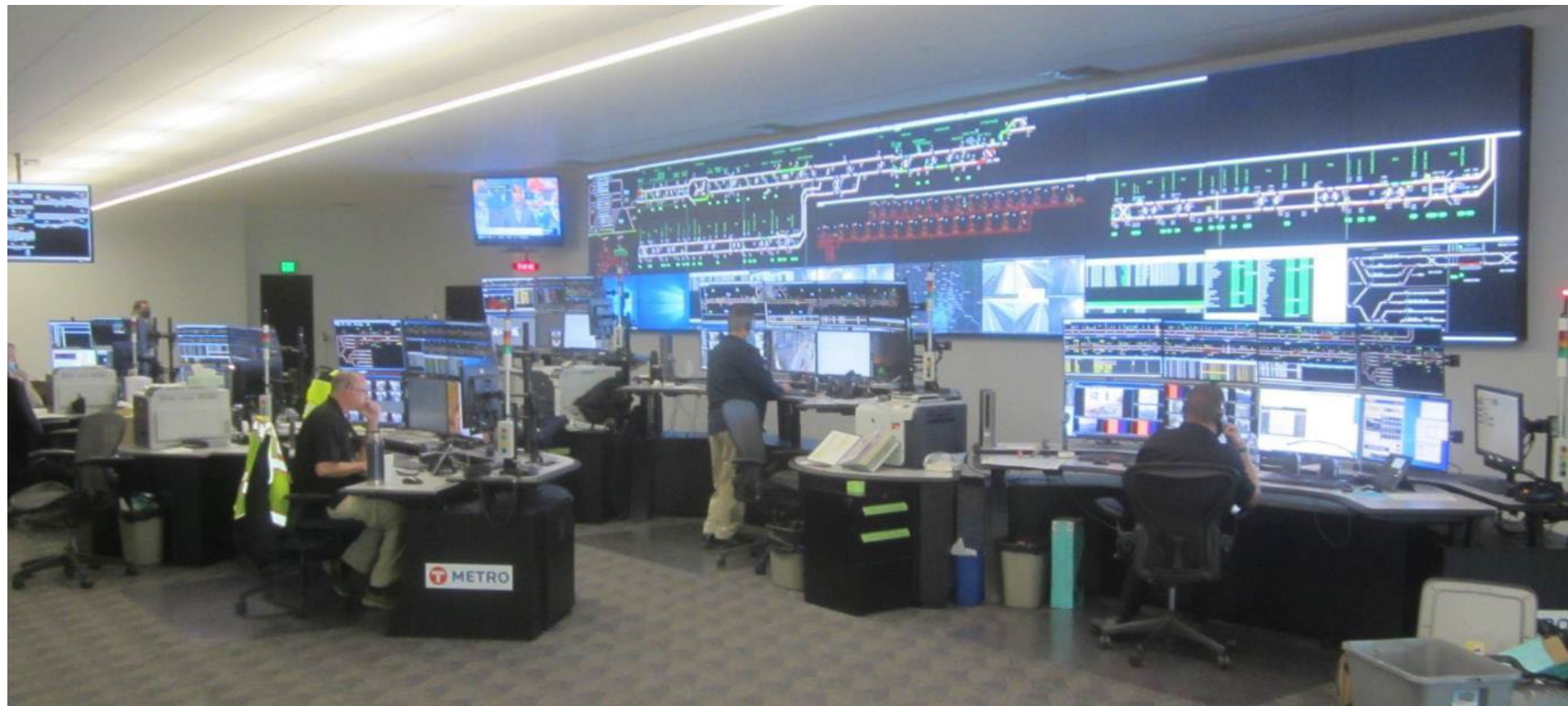


# West Runner Storage Tracks





# New Rail Control Center





# Public Involvement

# Public Involvement

- 2022 engagement, as of June 1:
  - Over 120 meetings with stakeholders
  - Public walking tours
    - 5 held in May
    - 5 planned for July
    - More tours this summer/fall
  - Over 80 construction hotline calls answered
  - Hundreds more individual communications with community members



*Opus area construction walking tour*



# Tours and Events

- Multigenerational engagement examples:
  - Preschool construction event: engaging with young children and providing a window into construction activities and equipment
  - Tour for University of Minnesota engineering students, stopping at locations such as the Excelsior LRT bridge and the Kenilworth LRT tunnel.
  - MnDOT retirees event connected with professionals who have worked on large capital improvement projects



*MnDOT Retirees Presentation*

# DBE/Workforce Update

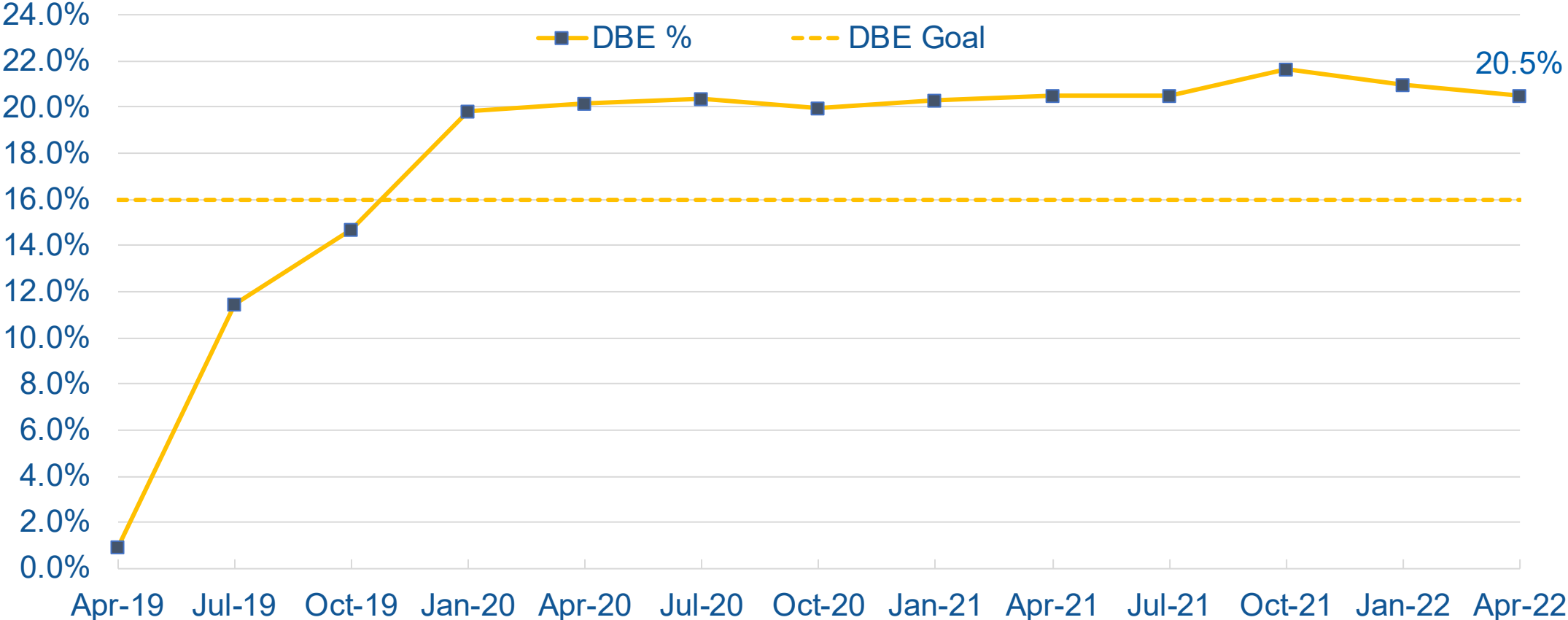
Ashanti Payne  
Metropolitan Council Office of Equity and Equal Opportunity



# DBE Achievement as of April 30, 2022

Contractor	Contract Description	Contract Amount	Contractor Billed to Date	DBE Billed to Date	DBE Date %	As of Date
LMJV 16% Goal	Civil	\$1,010,365,292	\$723,078,345	\$148,251,132	20.5%	4/30/22
APJV 12% Goal	Systems	\$206,478,611	\$79,019,190	\$13,518,799	17.1%	4/30/22
LS Black 15% Goal	Franklin O&M Exp.	\$41,009,266	\$40,982,781	\$7,786,429	19.0%	4/30/22
17% Goal	Closed Contracts	\$404,992	\$404,992	\$74,610	18.4%	
		<b>Contract Amount</b>	<b>Billed to Date</b>	<b>\$ DBE to Date</b>	<b>% DBE to Date</b>	
15% Goal		\$1,258,258,161	\$843,485,308	\$169,630,970	20.1%	

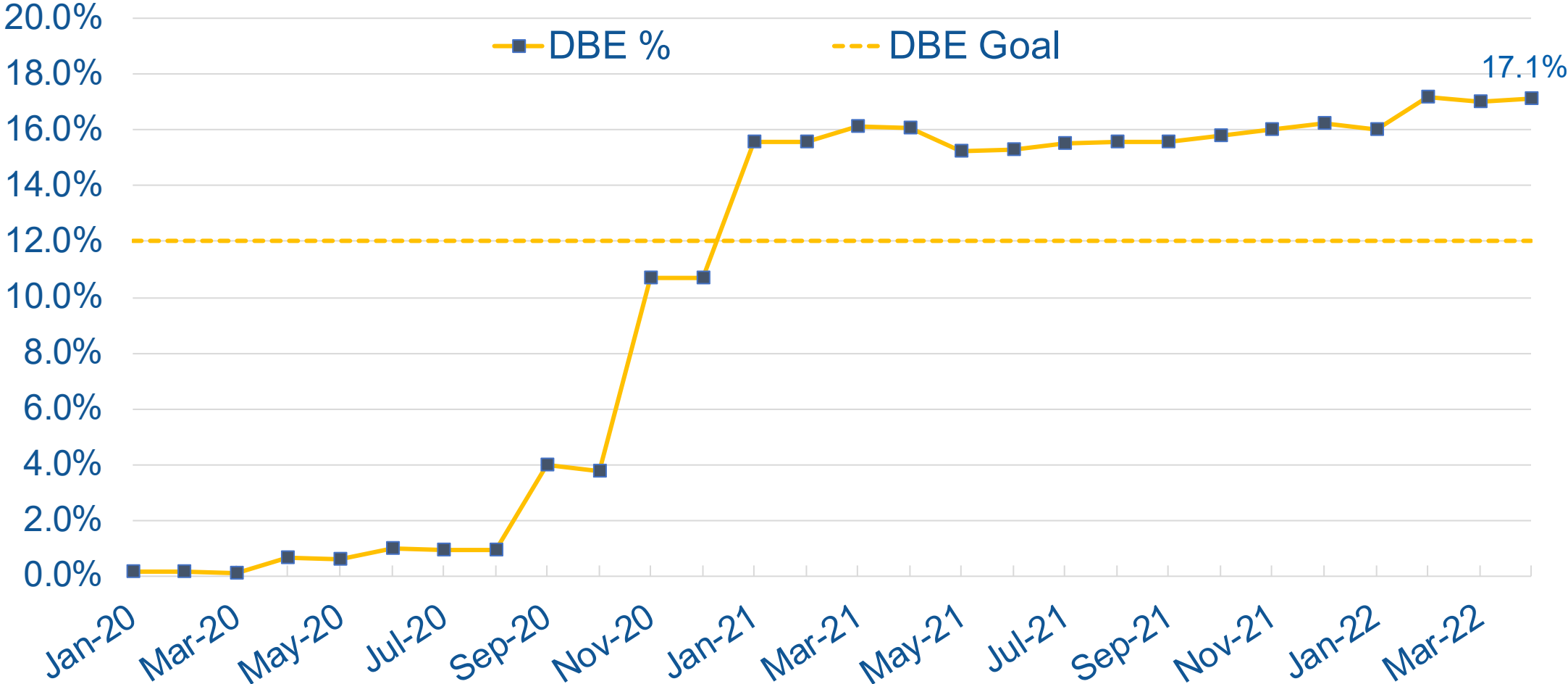
# Civil DBE Participation as of April 30, 2022



\*DBE Goal for the Civil Contract is 16%

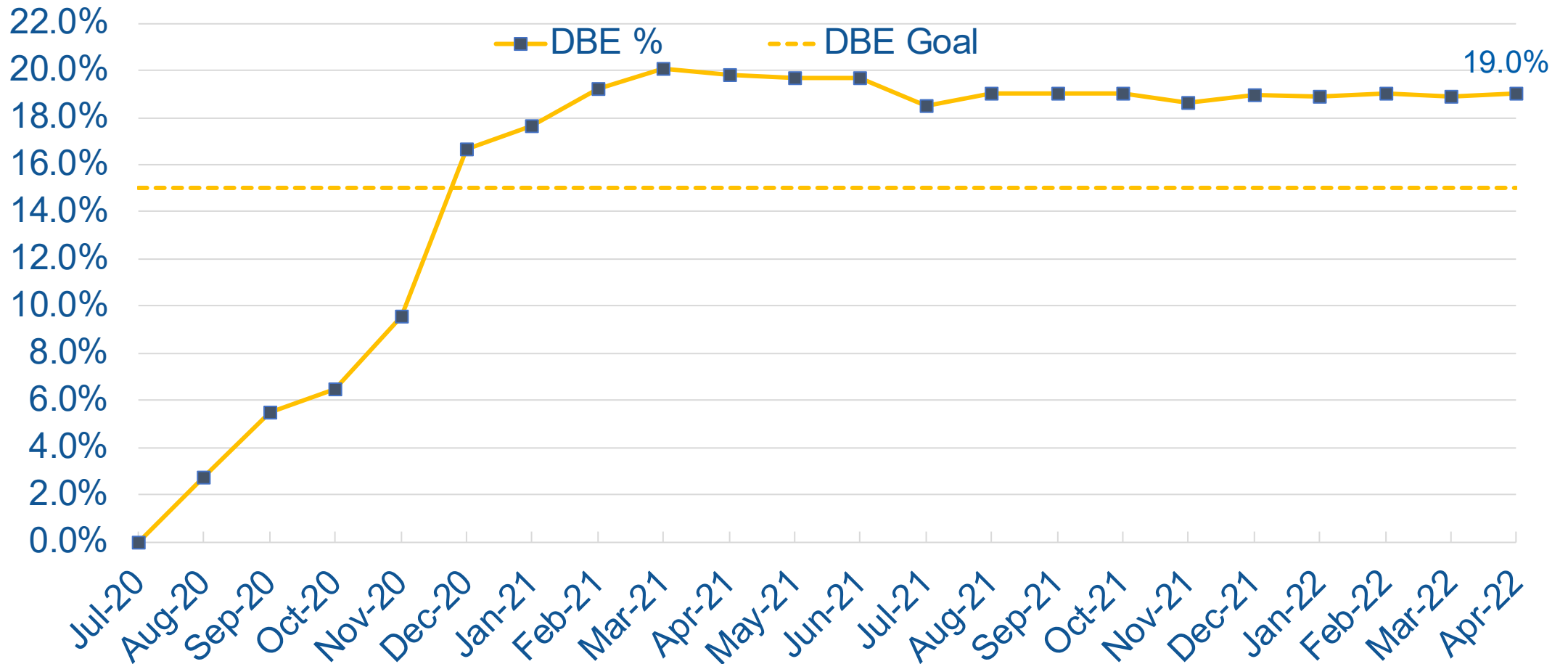


# Systems DBE Participation as of April 30, 2022



\*DBE Goal for the Systems Contract is 12%

# Franklin DBE Participation as of April 30, 2022



\*DBE Goal for the Franklin O&M Contract is 15%



# SWLRT Construction Contracts Disaggregated\*

- Construction Contracts Total: \$1,258,258,161

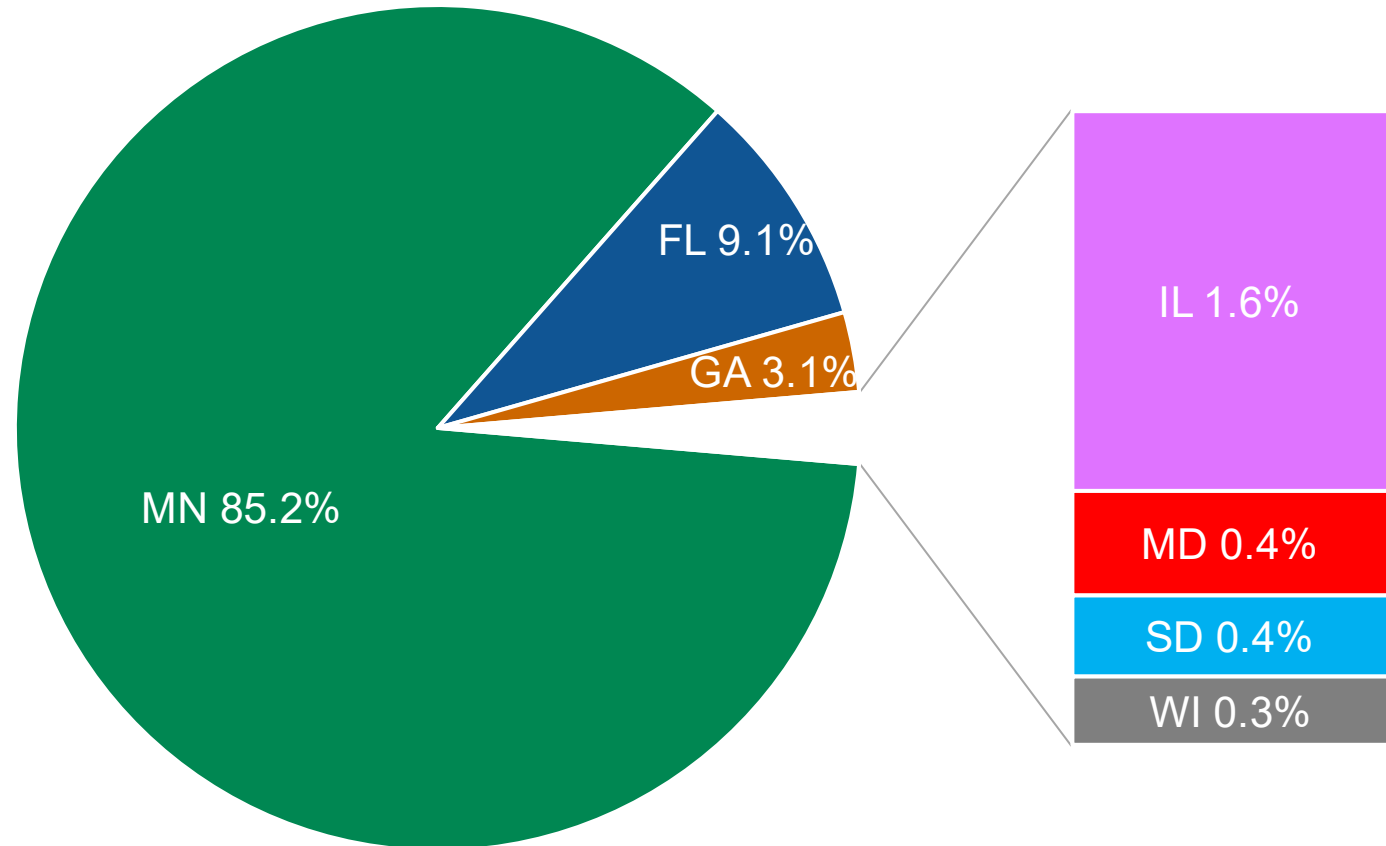
Ethnic Group	Women		Men		Total	
Asian Pacific	\$ 277,743	0.02%	\$ 43,266,598	3.44%	\$ 43,544,341	3.46%
Asian Subcontinent	\$	0.00%	\$ 1,900,001	0.15%	\$ 1,900,001	0.15%
Black	\$ 41,912	0.00%	\$ 8,474,069	0.67%	\$ 8,515,981	0.68%
Hispanic	\$ 743,773	0.06%	\$ 28,726,050	2.28%	\$ 29,469,823	2.34%
Native American	\$ 3,873,086	0.31%	\$ 18,643,415	1.48%	\$ 22,516,501	1.79%
White Women	\$ 120,019,564	9.54%			\$ 120,019,564	9.54%
DBE Contracts Total					\$ 225,966,210	17.96%

\*Contract values are as of 05/31/2022 and include: Civil, Systems, Franklin O&M & OMF Demo

# Disaggregated Construction DBE Data\*

- DBE contract participation by state:

State	Totals
MN	\$ 192,413,373
FL	\$ 20,500,000
GA	\$ 6,907,529
IL	\$ 3,690,783
MD	\$ 1,000,000
SD	\$ 795,000
WI	\$ 659,526

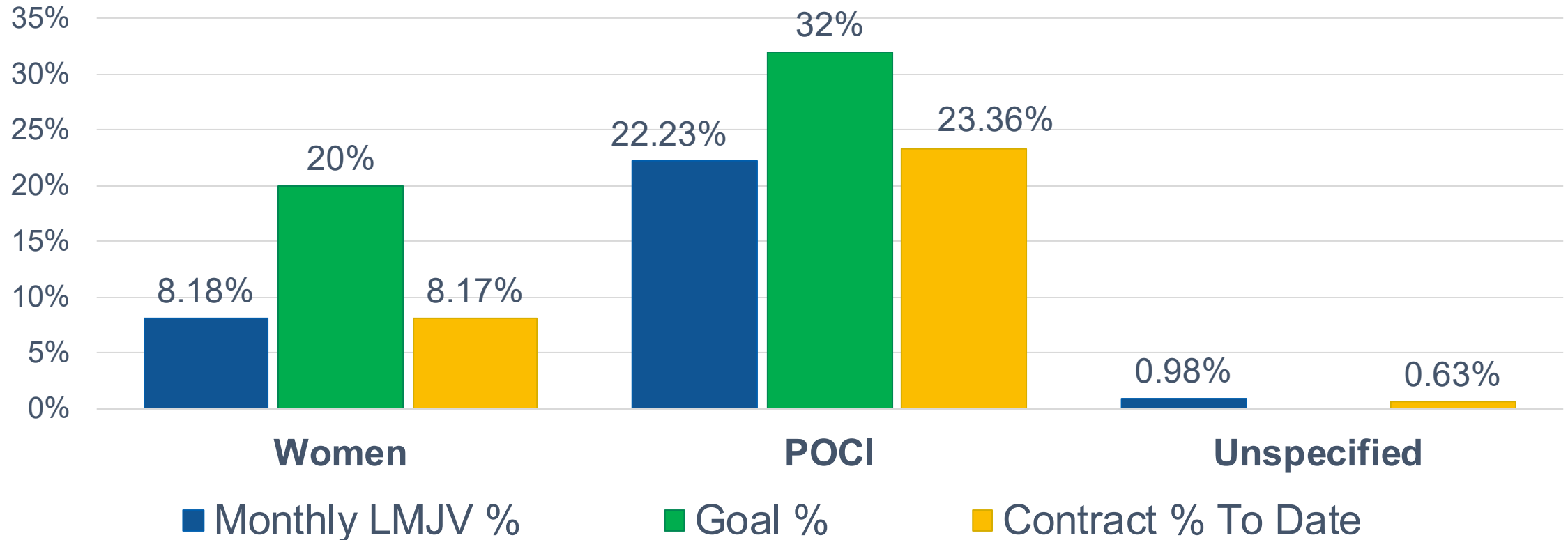


\*Contract values for Civil, Systems, Franklin O&M, and OMF Demolition as of May 31, 2022



# Civil Workforce Participation Percentage\*

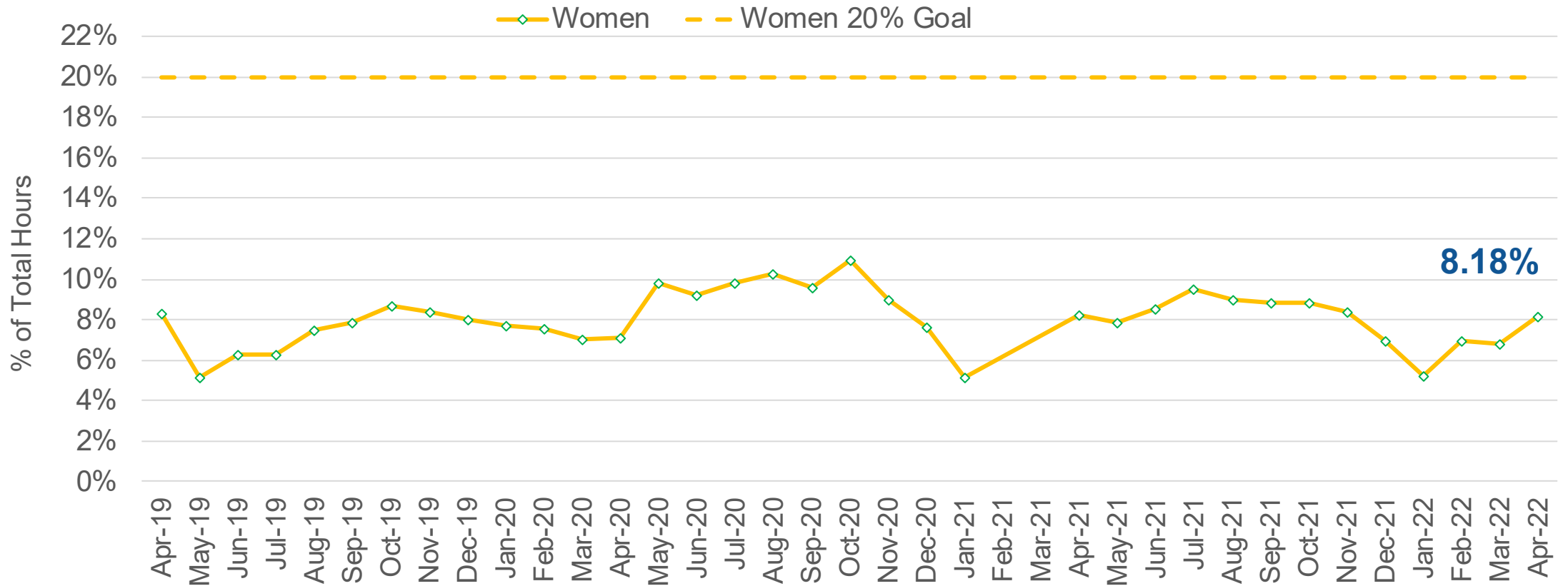
- April 2022: 50,313 hrs
- Civil Construction Total: 2,011,798 hrs



\*Based on MDHR Workforce Report for April 2022  
People of Color/Indigenous (POCI)

# Civil Workforce Participation Cumulative\*

Total Women hours to date: 164,418 hrs (8.17%)

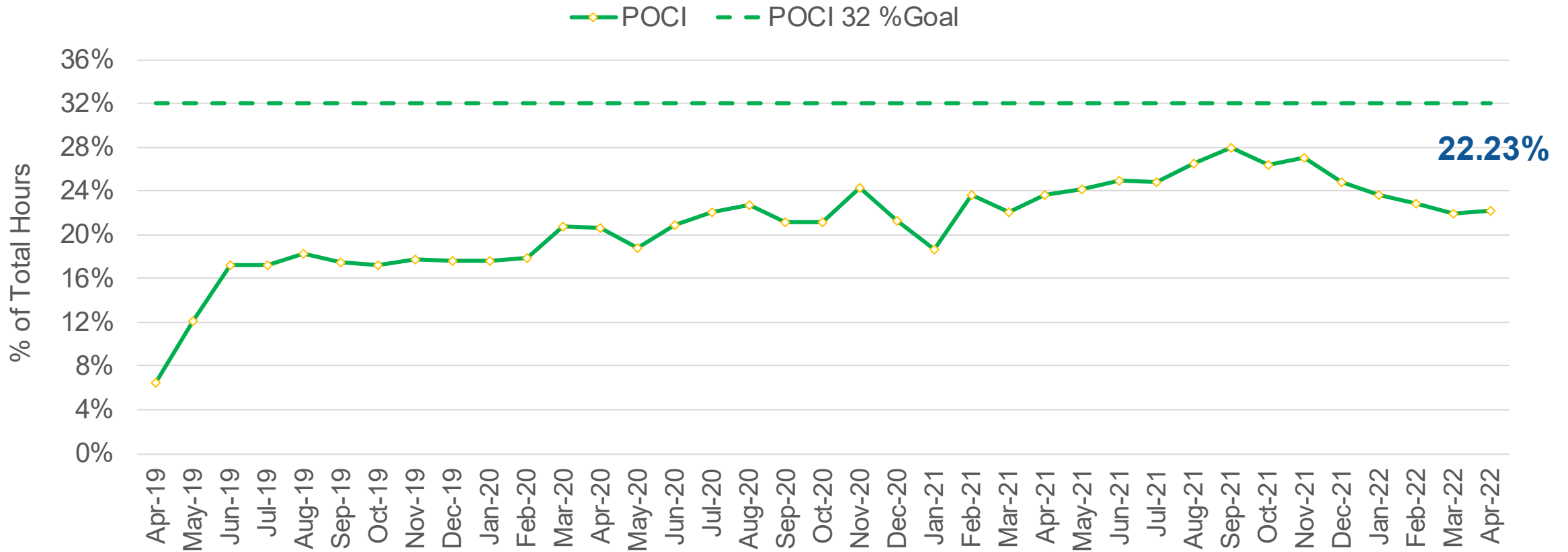


\*Based on MDHR Workforce Reports: Project Start through April 2022



# Civil Workforce Participation Cumulative\*

Total POCI hours to date: 470,016 (23.36%) hrs



\*Based on MDHR Workforce Reports: Project Start through April 2022

# Civil Workforce Participation Disaggregated\*

- Project Total: 2,011,798 hrs
- Total POCI: 470,016 hrs (23.36%)
- Total Women: 164,418 hrs (8.17%)

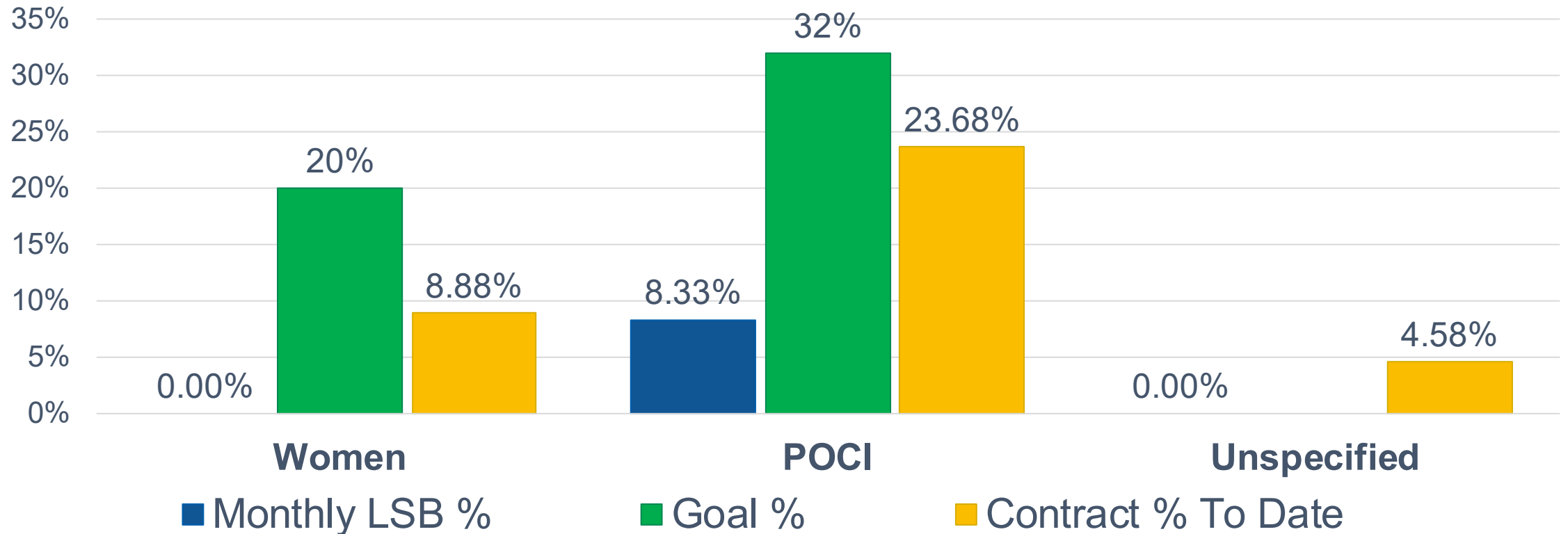
Ethnic/Racial Group	Total Hours Women	Women Percent	Total Hours Men	Men Percent	Total Hours	Total Percent
Asian Americans	1099	.05%	56,949	2.83%	58,048	2.89%
Black Americans	27,344	1.36%	92,836	4.61%	120,180	6.00%
Hispanic Americans	6,878	.34%	213,259	10.60%	220,138	10.94%
Native Americans	14,210	.71%	29,306	1.46%	43,516	2.16%
Multi-Racial	700	.04%	27,435	1.36%	28,135	1.40%
White Americans	114,052	5.67%	1,414,988	70.33%	1,529,040	76.00%
Not Specified	135	.01%	12,607	.63%	12,742	.63%

\*People of Color and Indigenous People (POCI) & Women participation from 12/1/18 – 4/30/2022



# Franklin O&M Workforce Participation Percentage\*

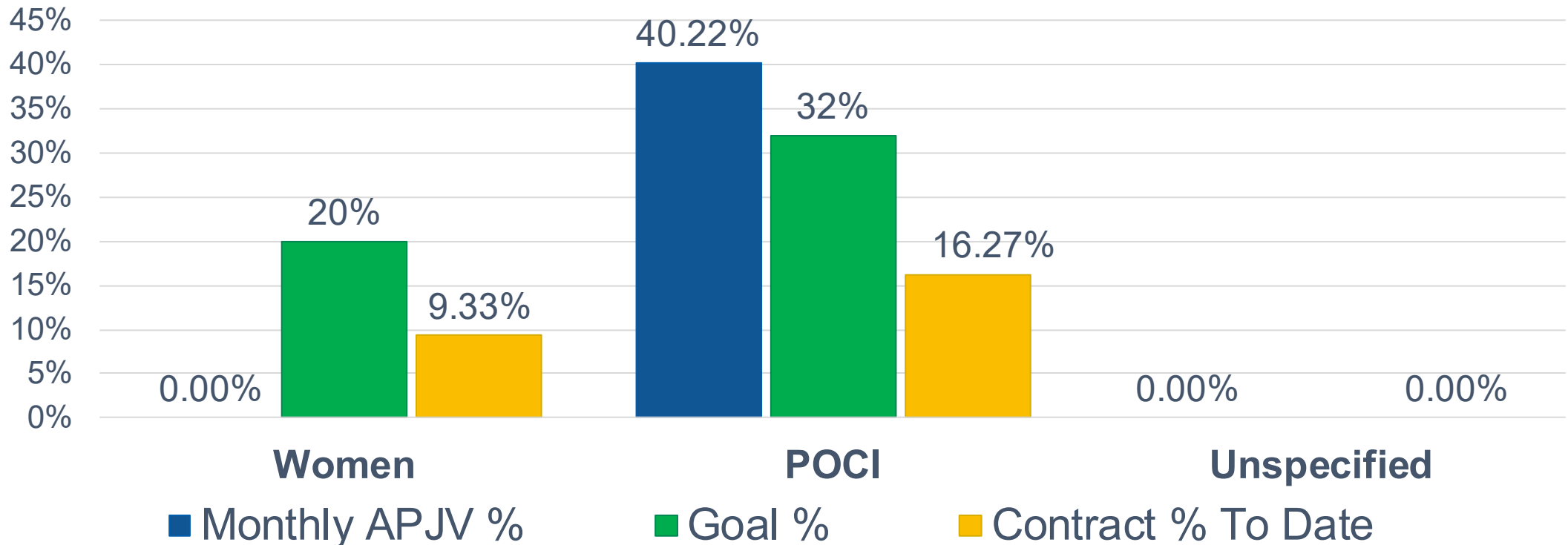
- April 2022: 36 hrs
- Franklin O&M Construction Total: 112,500 hrs



\*Based on MDHR Workforce Report for April 2022  
People of Color/Indigenous (POCI)

# Systems Workforce Participation Percentage\*

- April 2022: 363 hrs
- Systems Construction Total: 3,418 hrs



\*Based on MDHR Workforce Report for April 2022  
People of Color/Indigenous People (POCI)



# Next Steps Project Budget

**Nick Thompson**  
Metro Transit

# Next Steps Project Budget

- With the project over 60% complete meaningful scope reductions are not available
  - The Green Line Extension has undergone cost cutting measures already, we are building a well-constructed line that meets the needs of our communities
- Additional funding will be needed to complete the project
  - The Project requires funding to continue work in 2023
  - We are working with partners to identify available funding solutions
  - Stopping the project would be more costly



# Thank You

## MORE INFORMATION

**Website:** [GreenLineExt.org](https://GreenLineExt.org)

**Email:** [swrt@metrotransit.org](mailto:swrt@metrotransit.org)

**Twitter:** [@GreenLineExtMN](https://twitter.com/GreenLineExtMN)

**Instagram:** [@GreenLineExtMN](https://www.instagram.com/GreenLineExtMN)