



METROPOLITAN
C O U N C I L

Metropolitan Regional Park System

Park and Trail Long-Range Planning

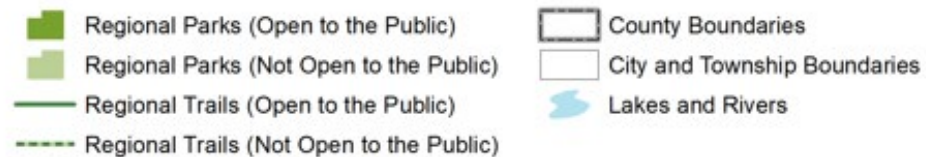
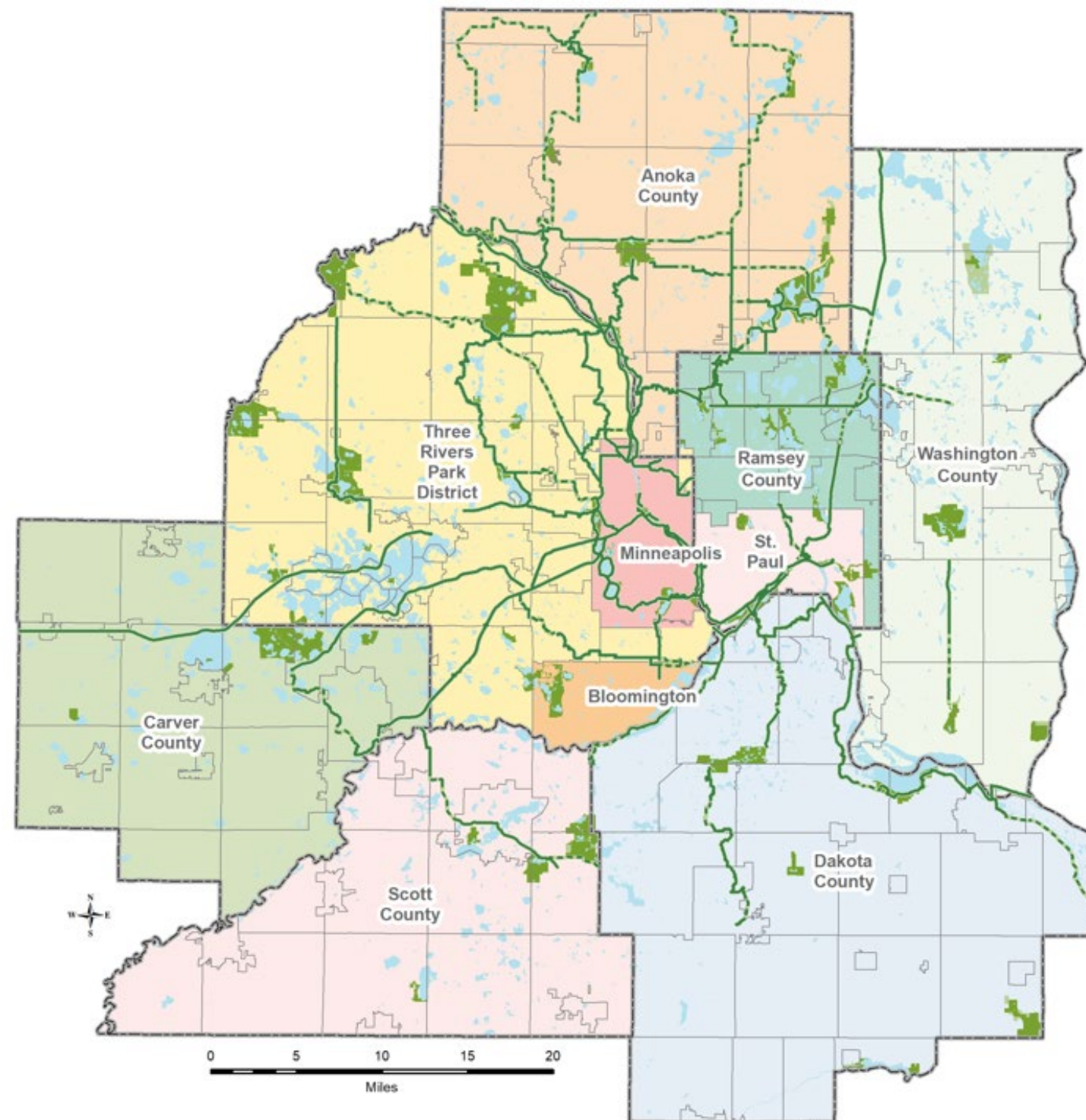
Emmett Mullin
Parks Manager, Community Development



Collaboration and cooperation

10 Regional Parks implementing agencies

- Anoka County
- Carver County
- Dakota County
- Ramsey County
- Scott County
- Washington County
- Bloomington
- Minneapolis Park & Recreation Board
- Saint Paul
- Three Rivers Park District



Regional park system



NATURE-BASED SYSTEM PROVIDES SIGNIFICANT GREENSPACE AND WILDLIFE HABITAT



8 SPECIAL RECREATION FEATURES (LIKE COMO PARK ZOO & CONSERVATORY AND GALE WOODS FARM)



56 REGIONAL PARKS AND PARK RESERVES



OVER 415 MILES OF INTERCONNECTED REGIONAL TRAILS



65 MILLION VISITS IN 2021



54,500 ACRES OF LAND

Met Council's role

Regional parks

- Partner with regional park implementing agencies to support a worldclass system
- Develop and implement **Regional Parks Policy Plan**
 - **Review Park and Trail Plans**
- Provide funding and research
- Protect the integrity of the system
- Review Comprehensive Plans



Metropolitan Parks and Open Space Commission



Eight commissioners and a chair

- Advise Metropolitan Council on a variety of regional topics:
 - Help develop Regional Parks Policy Plan, (must be reviewed and updated at least every four years)
 - Review Regional Park and Trail Long Range Plans
 - Review Funding Requests, including park and trail land acquisitions.

Park and Trail Plan Requirements

Review plans

- Consistency with Regional Policies including:
 - Boundaries
 - Acquisition costs
 - Demand forecast
 - Development concept
 - Public engagement
 - Equity Analysis
 - And more...





Emmett Mullin

Manager, Regional Parks

emmett.mullin@metc.state.mn.us

