



Planning for Regional Growth

Special meeting of the Metropolitan Council



March 29, 2023

LisaBeth Barajas

metro council.org

Planning for Regional Growth



Today's discussion

Regional Planning Overview

2050 Planning Approach

What's already been accomplished

Strategic Planning

Regional Planning Overview



Why regional planning?



Statute Requires Development Guide

Metropolitan Land Planning Act (Minn. Stat. 473.145)

The Metropolitan Council shall prepare and adopt, after appropriate study and such public hearings as may be necessary, **a comprehensive development guide** for the metropolitan area...

Statute Requires Development Guide

Metropolitan Land Planning Act (Minn. Stat. 473.145)

... It shall consist of a compilation of policy statements, goals, standards, programs, and maps **prescribing guides for the orderly and economical development, public and private, of the metropolitan area.** The comprehensive development guide shall recognize and encompass physical, social, or economic needs of the metropolitan area and those future developments which will have an impact on the entire area including but not limited to such matters as **land use, parks and open space land needs, the necessity for and location of airports, highways, transit facilities, public hospitals, libraries, schools, and other public buildings.**

System and Policy Plans



Regional Development Guide

- Geographic planning areas
- Broad policies, goals, and strategies

Regional Systems Planning

- Transportation
- Water Resources Management
- Parks

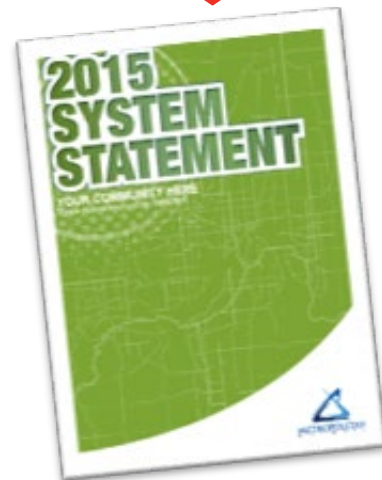
Policy Plan for each system

- Specific policies, goals, strategies
- Details on system improvements, extension, limitations

Policy Plan for Housing

- First plan since 1980s to specifically address housing in the region

Framework for local planning

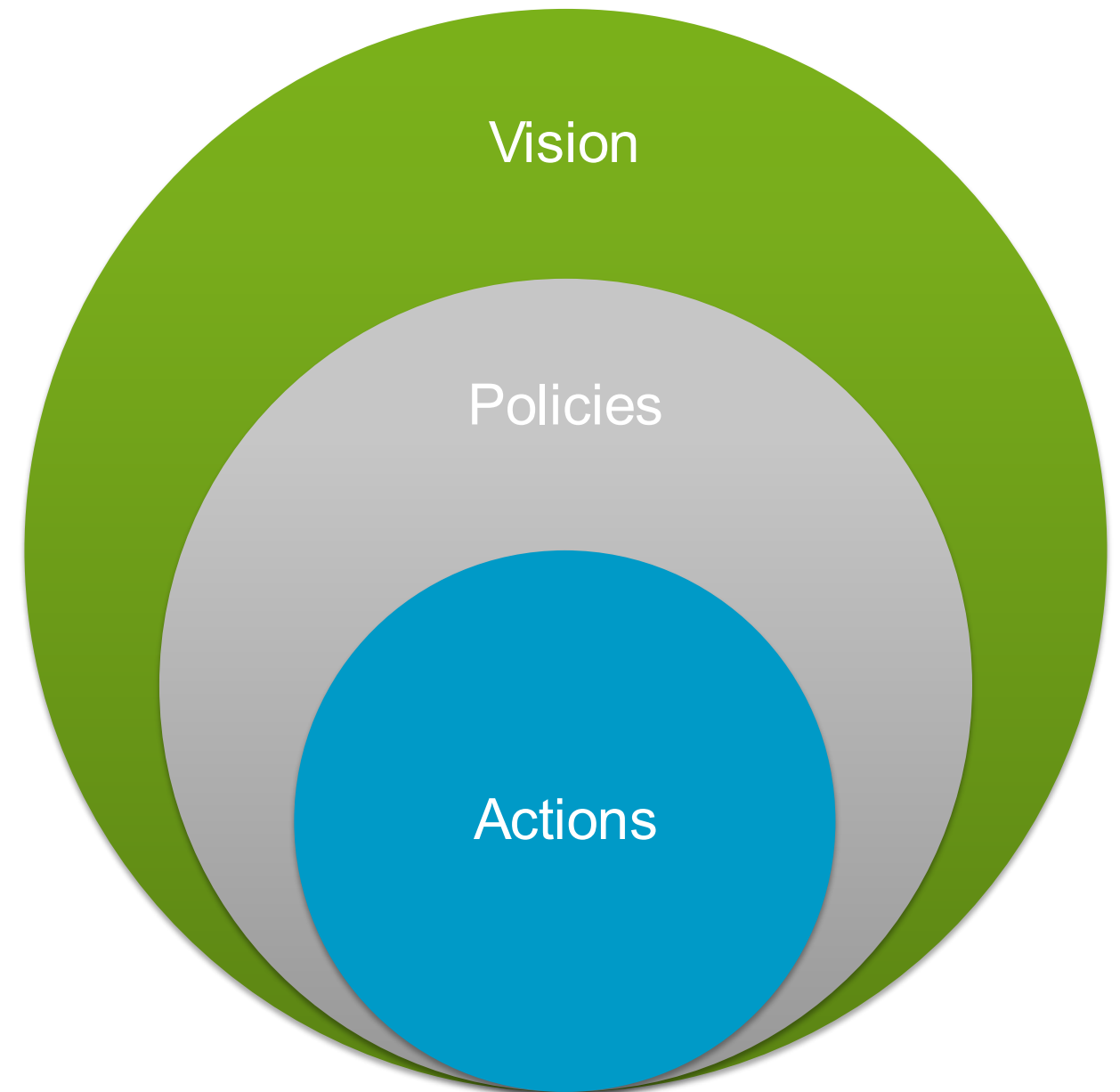


Regional Plans set the broad context

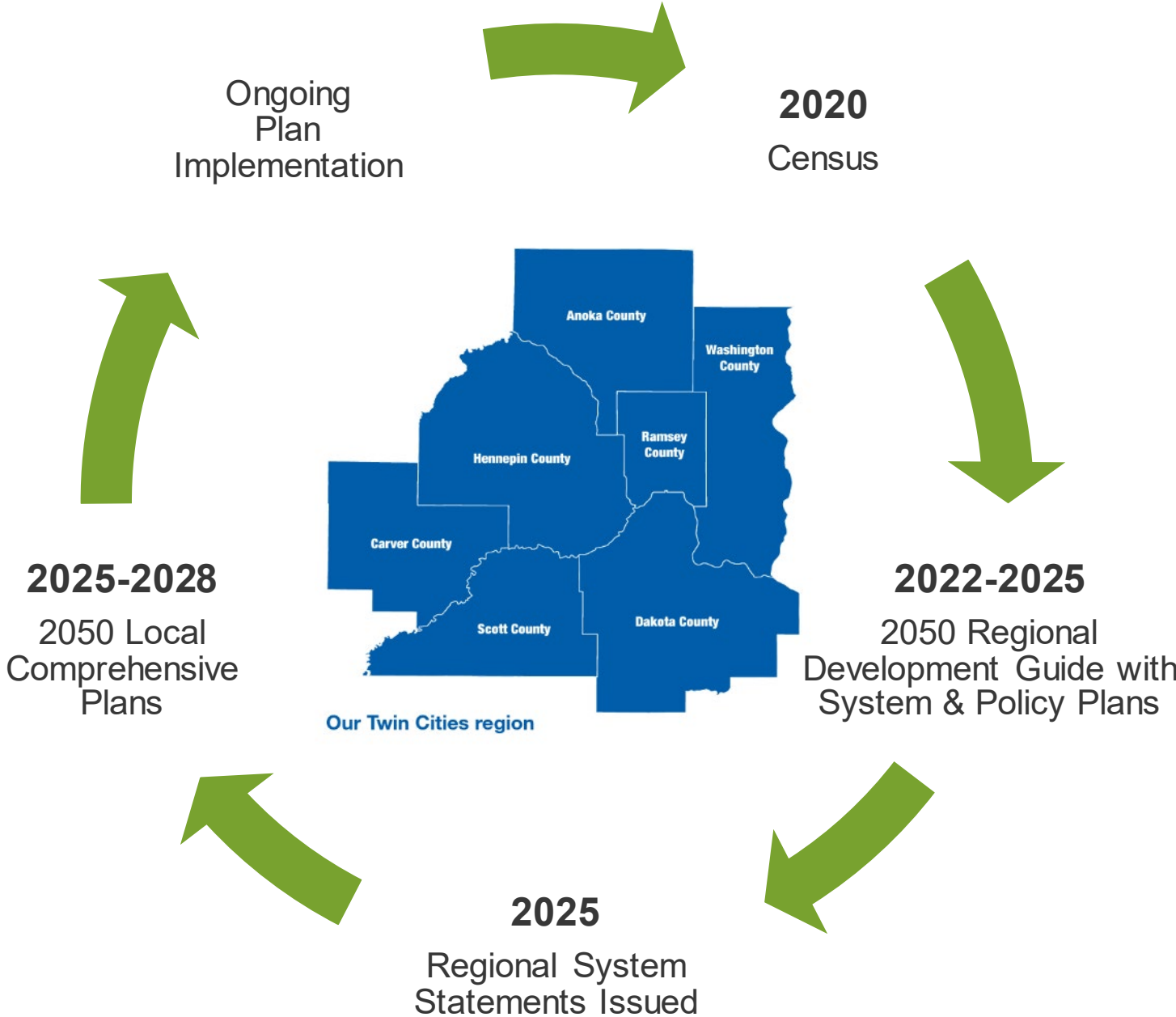
- Council roles
- Community roles
- Expectations for supporting forecasted growth
- Expectations for planning/support regional infrastructure and connections with local infrastructure

Local comprehensive plans

- Community's vision
- Guides growth and development
- Identifies key local issues & how the community intends to respond
- Provides:
 - Basis for local vision and principles
 - Reasoning for public facilities plans and budgets
 - Guidance on making decisions
 - Provides direction for ordinances and capital investments



Regional planning cycle



2050 Planning Approach



Timeline: a multi-year initiative

| Project Phase | 2021 | | | | 2022 | | | | 2023 | | | | 2024 | | | | 2025 | | | |
|--|------|----|----|----|------|----|----|----|------|----|----|----|------|----|----|----|------|----|----|----|
| | Q1 | Q2 | Q3 | Q4 | Q1 | Q2 | Q3 | Q4 | Q1 | Q2 | Q3 | Q4 | Q1 | Q2 | Q3 | Q4 | Q1 | Q2 | Q3 | Q4 |
| Current State Investigation & Reporting Includes regional issues workshops studies, census, comp plan composite, etc. | █ | █ | █ | █ | █ | █ | █ | | | | | | | | | | | | | |
| Vision Development & ID Challenges / Opportunities Intensive outreach & engagement Topic Area Specific engagement, such as land use Forecasting & Scenarios Planning investigation | █ | █ | █ | █ | █ | █ | █ | █ | █ | █ | | | | | | | | | | |
| System / Policy Area Work Engagement - iterative, parallel on all topics Delivery of additional studies Policy development, refinement | | | █ | █ | █ | █ | █ | █ | █ | █ | █ | █ | █ | | | | | | | |
| 2050 MDG Draft Drafts of Chapters (land use, parks, housing, etc.) Adopt 2050 MDG & Chapters | | | | | | | | | | | █ | █ | █ | █ | | | | | █ | █ |
| System Statement Development Publish System Statements | | | | | | | | | | | | | | | | | █ | █ | | █ |

Existing
Conditions

Emerging
Changes

Values & Vision

Goals & Objectives

(cross-divisional and policy area specific)

Land Use
Policies

Housing
Policies

Parks
Policies

Transportation
Policies

Water
Policies

Land Use
Actions

Housing
Actions

Parks
Actions

Parks
System
Investment

Transport
Actions

Transport
System
Investment

Water
Actions

Wastewater
System
Investment

Our work reflects the region's existing conditions and emerging changes

Our shared values reflect the core beliefs that guide how we work toward the vision of what we want to achieve.

The goals and objectives articulate desired end states and achievable results that advance toward them, to achieve the vision.

Policies set the intent and approach to regional issues that will help achieve goals and objectives – policies clarify expectations for both Council and partners.

Policies are implemented through specific actions by the Council and partners.

Scenario planning

What is scenario planning?



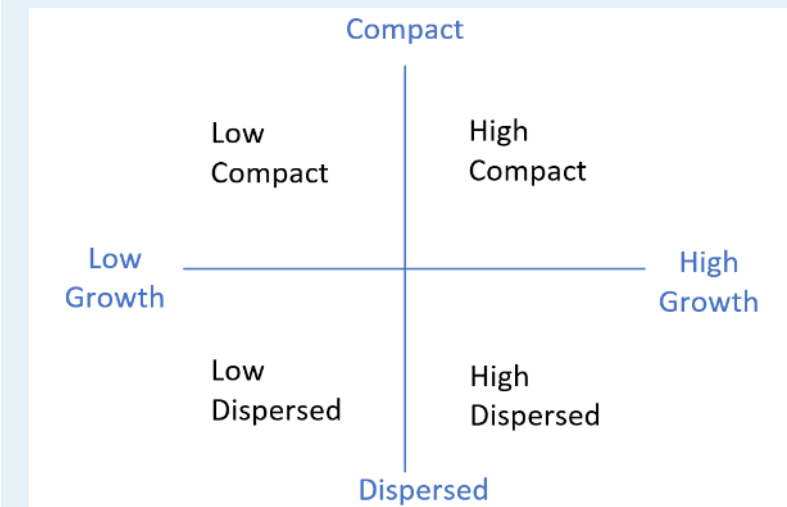
Why and how are we using it?

- Prepare for contingencies in an unknown future
- Identify future risks and opportunities
- Reveal land use goals and objectives
- Inform future land use policies

What scenarios are we examining?

Regional Growth:

How much? Where?



**What's already
been
accomplished**



Building understanding

PLUS other discussions in Transportation (TAB & TAC) and Environment Committees

2020

- Engaging with People Experiencing Homelessness
- Wastewater Reuse Policy and Practice
- Covid-19 Impacts on Unemployment, Income, and Housing Cost Burden
- Disparities People With Disabilities Face In Society
- Rethinking Areas of Concentrated Poverty
- Network Next and Arterial BRT Plan Update
- Development Trends Along Transit
- ULI-MN Navigating your Competitive Future Developers Panel
- Network Next and Arterial BRT Evaluation Results

2021

- MAC Recovery through the Pandemic
- MCES Wastewater COVID-19 Monitoring
- Regional Forecast Update through 2050
- Changes in Green Spaces in the Region
- 2020 Land Use Inventory
- 50-years of the Fiscal Disparities Program & Panel
- Affordable Housing Dev. Trends/Regional Housing Policy
- Chloride Impacts
- Growth and Change in the Region's Communities: Lessons from the 2020 Census
- Priority Waters Update

Building understanding

PLUS other discussions in Transportation (TAB & TAC) and Environment Committees

2022

- Growing Shade: Tree Canopy Planning in the Region
- Recommendations for Water Supply Planning in the Metro Area
- Analysis of Thrive Equity Commitments
- Regional Parks System Historical-Cultural Study
- National Trends in the Housing Choice Voucher Program
- Growth Disrupted: Lessons from 2021 Population Estimates

2022 (cont.)

- Regional Chloride Trends in Metro Area Streams
- Residential Development & Deeply Affordable Housing
- Small Area Fair Market Rents
- Regional Parks System Visitor Study
- Young Leaders Collaboration

2023

- Addressing Homelessness in the Region

Building understanding

PLUS other discussions in Transportation (TAB & TAC) and Environment Committees

Annual reporting

- Population Estimates
- Housing Policy and Production Survey
- Regional Parks System Annual Use Estimate
- Plat Monitoring
- Agricultural Preserves
- Residential Development Trends / Building Permit Survey
- 2040 Comp Plan Amendment Trends

2040 Comp Plan Composite

- April 7, 2021 – April 6, 2022:
 - System and Policy Plans & Land Use
 - Healthy Community Planning Project
 - Planning for Aging
 - Housing Tools and Locally Identified Housing Needs
 - Local Planning Priorities
 - Equity in Planning

Council-adopted Plans



Metropolitan Council's
Strategic Plan, 2020-2022

Focusing on Transportation, Reducing Racial
Disparities, Housing, and Sustainability



Regional Economic Framework

In partnership with the Center for Economic Inclusion
and Greater MSP



Zero Emissions Bus Transition Plan

Operations-focused plan for Metro Transit fleet



Metropolitan Council's
Climate Action Work Plan

Internal operations-focused 5-year plan

2050 Regional Plan Accomplishments

Regional Values

- Equity: We value the people and communities of our region.
- Leadership: We value those in our region who inspire and motivate others for positive change.
- Accountability: We value being effective in our work and achieving measurable outcomes.
- Stewardship: We value our region's resources.

Regional Vision

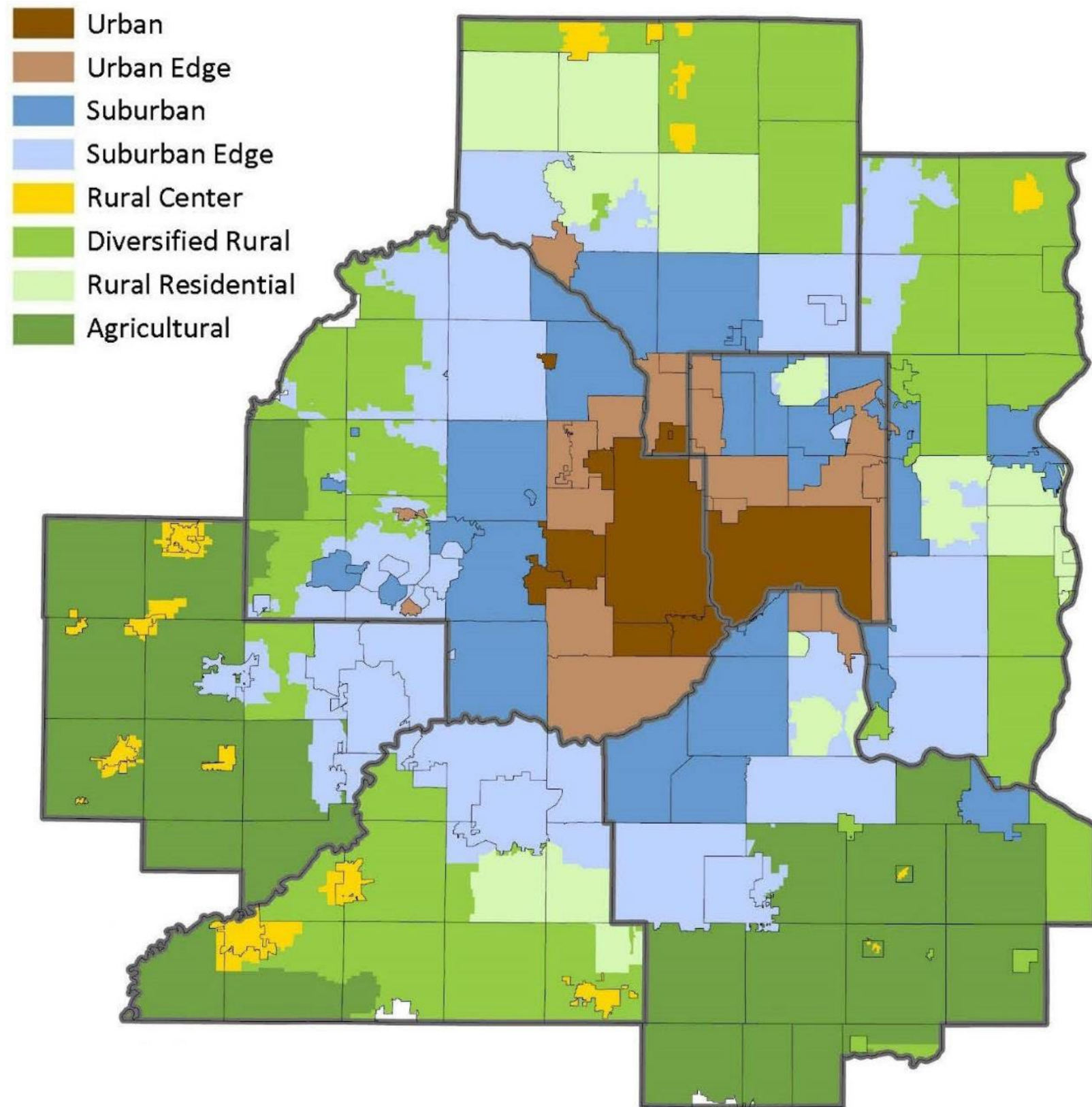
- Our Region is Equitable, Inclusive, and Welcoming
- We Lead on Addressing Climate Change
- We Protect and Restore Natural Systems
- Our Communities are Healthy, Safe, and Vibrant

Significant Cross-Cutting Issues

- Equity
- Climate Change
- Natural Systems
- Public Health, Safety, and Wellbeing

Working Draft Community Designations

1. Metropolitan Urban Service Area (MUSA)
2. Age of the housing stock
3. Intersection density
4. Planned residential density



Early-stage engagement

PLUS
so much
more!

Scenario planning

Workshops with advisory committee volunteers

Equity metrics technical team

Trends, uncertainties, strategies

Advisory committees

Data, analysis, and studies

Emerging regional issues

Policy explorations

Council conversations

Establish work groups

Values, vision

Policy direction

Local government, partners

Regional Planning Advisory Group

Comp planning lessons learned

Local priorities, emerging issues

New initiatives

Young Leaders Collab

Historical Cultural Study

Listening Sessions

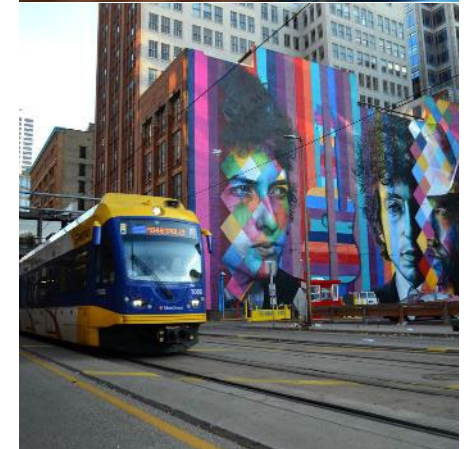
Strategic Planning



Strategic Planning

Providing Organizational Direction

- Intersection of regional responsibilities and state priorities
 - Each state agency develops and executes its own strategic plan
 - Aligns with the administration's priorities
 - Guides the work of the organization
- Identifies Council priority areas
 - Priority areas related to the Council's mission, vision, and values
 - Provides focus over the next three years through regional plans, Council's role in regional infrastructure, and the systems it manages
- Timeframe: 2023-2025





Questions

LisaBeth Barajas

Executive Director
Community Development
(651) 602-1895

lisabarajas@metc.state.mn.us

