

Metropolitan Council

May 24, 2023

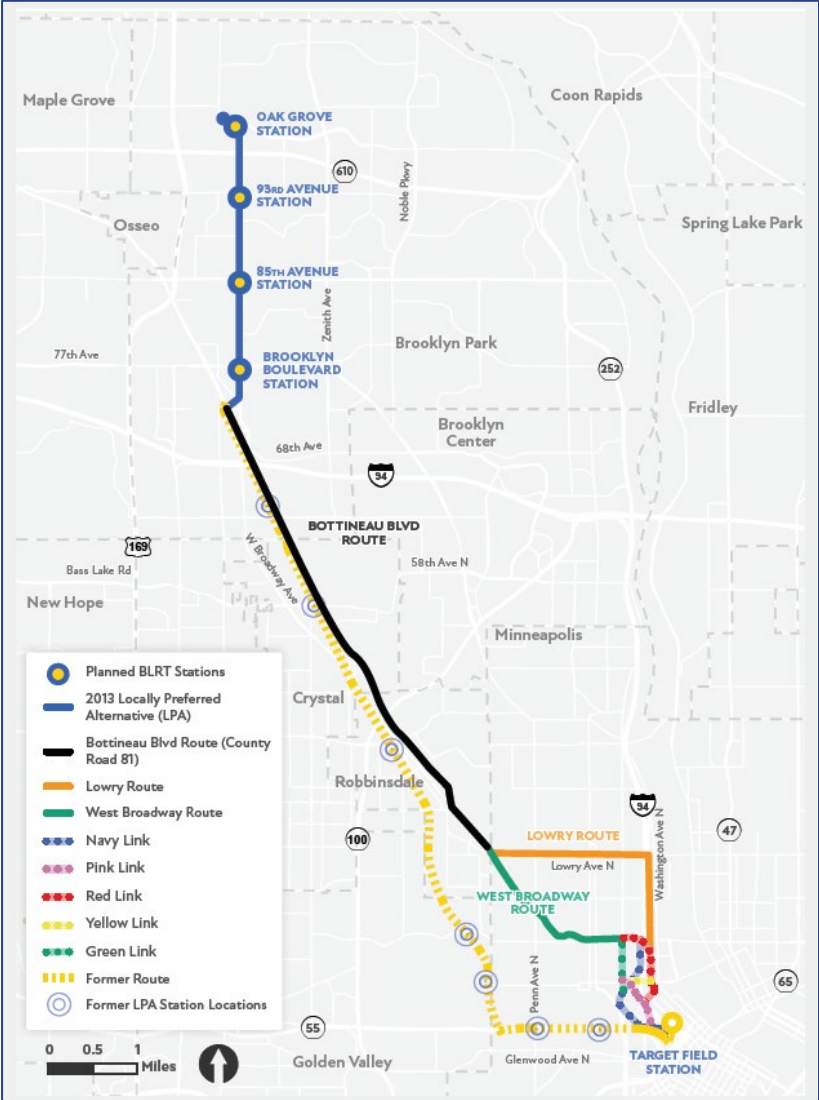
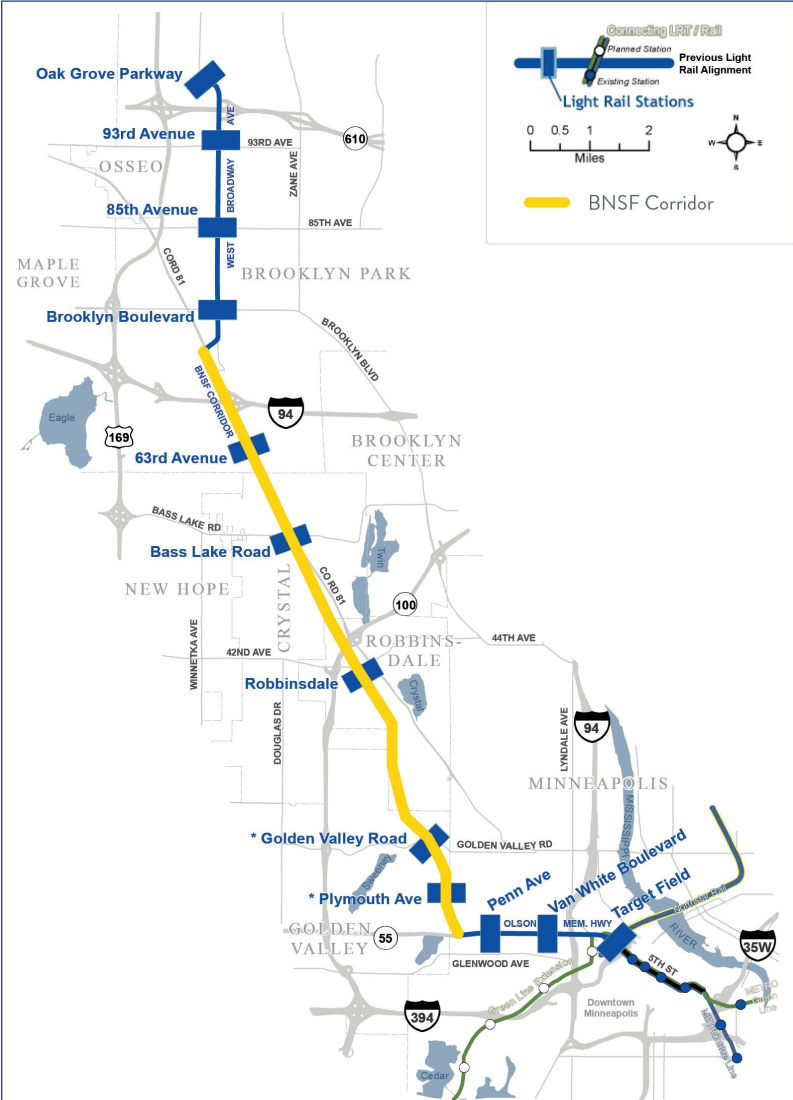


BROOKLYN PARK | CRYSTAL | ROBBINSDALE | MINNEAPOLIS



Moving at the Speed of Trust: August 2020

- After a multi-year effort to negotiate with BNSF that included many levels of government and offers including buying the corridor, it was time to move the project forward



Characteristics of Displacement

Displacement is involuntary

Loss: of home, sense of belonging, a community's sense of identity and pride

Housing prices increasing faster than people's ability to pay

Race and class factors: poor people and BIPOC communities are more vulnerable to displacement

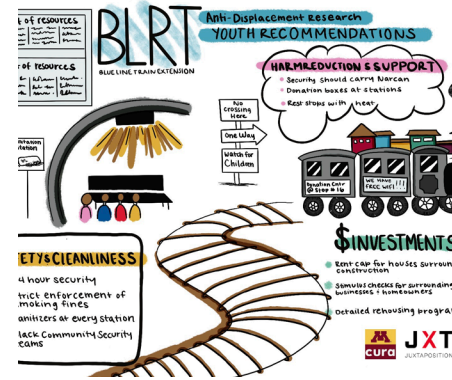
People can no longer conduct their full lives in their chosen home: living, working, shopping, cultural practices

Disinvestment and loss of economic and cultural asset



Vision for the BLRT Anti-Displacement Work

- Minimize displacement and maximize community benefits of light rail by centering community voices in establishing strong anti-displacement strategies for implementation



Goals

- Ensure light rail investment benefits current corridor residents, businesses
- Help communities prepare for light rail opportunities, survive construction, and thrive into the future



Met Council Anti-Displacement Team

- Lisa Barajas, Community Development
- Angela Torres, Community Development
- Stephen Klimek, Community Development
- Ned Smith, Environmental Services
- Sam O'Connell, Regional Administration
- Michael Krantz, Metro Transit/TOD
- Kathryn Hansen, Metro Transit/TOD
- Sophia Ginis, Metro Transit
- Jon Tao, OEEO
- Ashanti Payne, OEEO
- Julieann Guglielmo, OEEO
- Niambi Shakir, OEEO



Anti-Displacement Recommendations



Recommendations

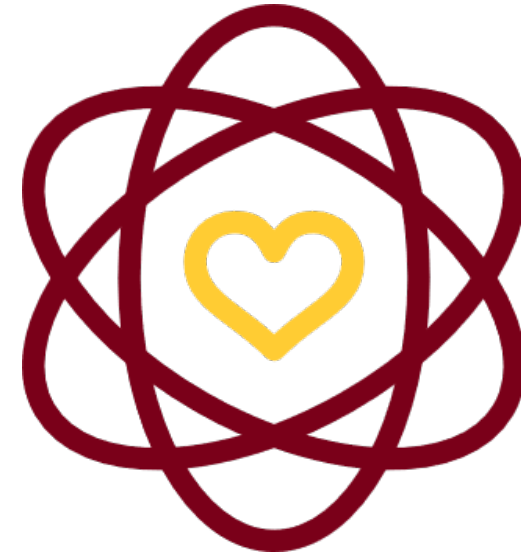


Centers recommended
outcomes first

Distinct to each jurisdiction
and corridor-wide



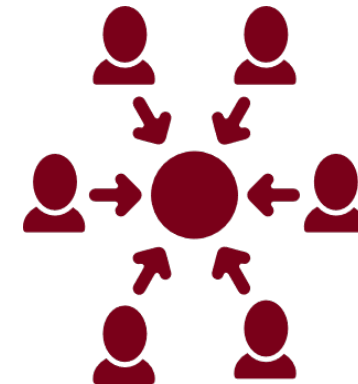
17 policies support
recommended outcomes



ADWG identified underlying
principles for all
recommendations

Principles for Recommendations

- Accessible to all
- Measurable with accountability mechanisms
- Designed to support those most impacted by construction
- Target existing residents, not potential ones



Brooklyn Park Recommended Outcomes

- Keep the rich culture of the corridor in place
- Improve the climate for businesses post-construction, and prioritize development of spaces for small businesses
- Provide opportunities for existing residents and businesses to stay in place and feel supported
- Support development, preservation, and access of safe and affordable housing and housing choice
- Ensure youth feel safe on and around the light rail and feel excited and proud to remain in their communities



Crystal/Robbinsdale Recommended Outcomes

- Address indirect construction impacts
- Improve the climate for businesses post-construction, and prioritizing development of spaces for small businesses
- Improve infrastructure around the project
- Support development, preservation, and access of safe and affordable housing and housing choice
- Keep the rich culture of the corridor in place
- Ensure there are sufficient resources to support policy implementation, organizing efforts, community development and ownership, and other anti-displacement strategies



Minneapolis Recommended Outcomes

- Provide opportunities for community to connect to BLRT and development in a joyful way
- Create opportunities for community ownership and being able to measure levels of community ownership
- Empower community to have control over decision-making throughout the corridor
- Provide opportunities for existing residents and businesses to stay in place and feel supported
- Grant reparations to the Harrison neighborhood for the harm caused by the previous iteration of the alignment



Minneapolis Recommended Outcomes

- Create and enforce structures of accountability for government agencies along the alignment
- Ensure there are sufficient resources to support policy implementation, organizing efforts, community development and ownership, and other anti-displacement strategies
- Ensure there is access to land, housing and businesses in the corridor throughout all phases of construction
- Ensure that 50% of jobs from the Bottineau Light Rail development are held by North Minneapolis residents
- Ensure that there is a continued role for ADWG members throughout all phases of the project



Policy Recommendations

Mandatory
Relocation
Assistance

Tenant
Opportunity to
Purchase

Limiting Investor
Purchasing/
Corporate
Ownership

Land Disposition
Policy

Right to Return

Rent Stabilization

Commercial and
Residential Land
Trusts

Financial
Resources for
Organizing/The
Right to Organize

Zero to Low
Interest Loans

Small Business
Grants/Small
Business Support

Workforce
Programs

NOAH
Preservation

Inclusionary
Zoning

Universal Basic
Income/
Guaranteed
Basic Income

Right to Counsel

Tenant Screening
Reform

Cultural
Placekeeping/
Placemaking



What it Will Take for Implementation



Coordination, collaboration and commitment



Investment and partnership from public, private, philanthropic, and community organizations



Transparency and shared decision-making

Transitioning to Implementation

June 2023-2024

- Communicate recommendations, Phase I deliverables
- Engage communities in developing implementation plan
- Prioritize strategies for before, during, after construction
- Bring implementing partners together for action



Additional Considerations

- Sustainable, collaborative structure
- Additional sector representation
 - Private
 - Philanthropy
 - Non-profits



Advancing to Implementation

- Council considerations:
 - How do we resource and prioritize this work?
 - Where does this work reside and how is it coordinated?
 - How will we measure success?



Areas of Early Opportunity

- DBE and Workforce
- Naturally Occurring Affordable Housing Preservation
- Place “preserving”/”keeping”
- Grant support/technical assistance/navigators
- Small business support/marketing



Stay connected

- **BlueLineExt.org**
 - For the latest project updates and to sign up for our newsletter
 - Connect with staff for your questions or schedule a presentation
- Follow us:
 - Twitter: @BlueLineExt
 - Facebook: MetroBlueLineExtension

