



Update on the Public Comment Process

LisaBeth Barajas, Executive Director,
Community Development Division

Michelle Fure, Public Involvement Manager,
Communications

November 13, 2024



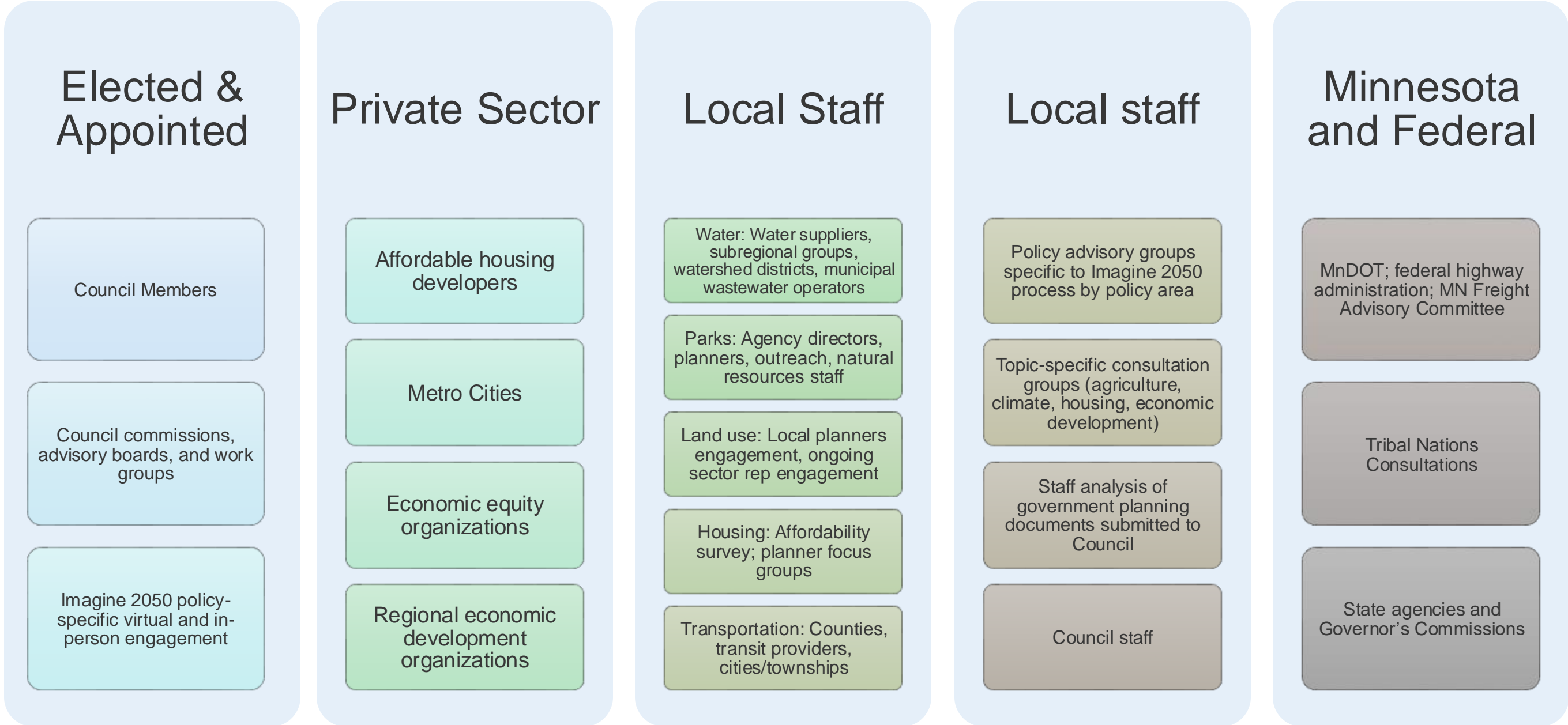
Imagine 2050 Engagement Approach



Studies and engagement approaches

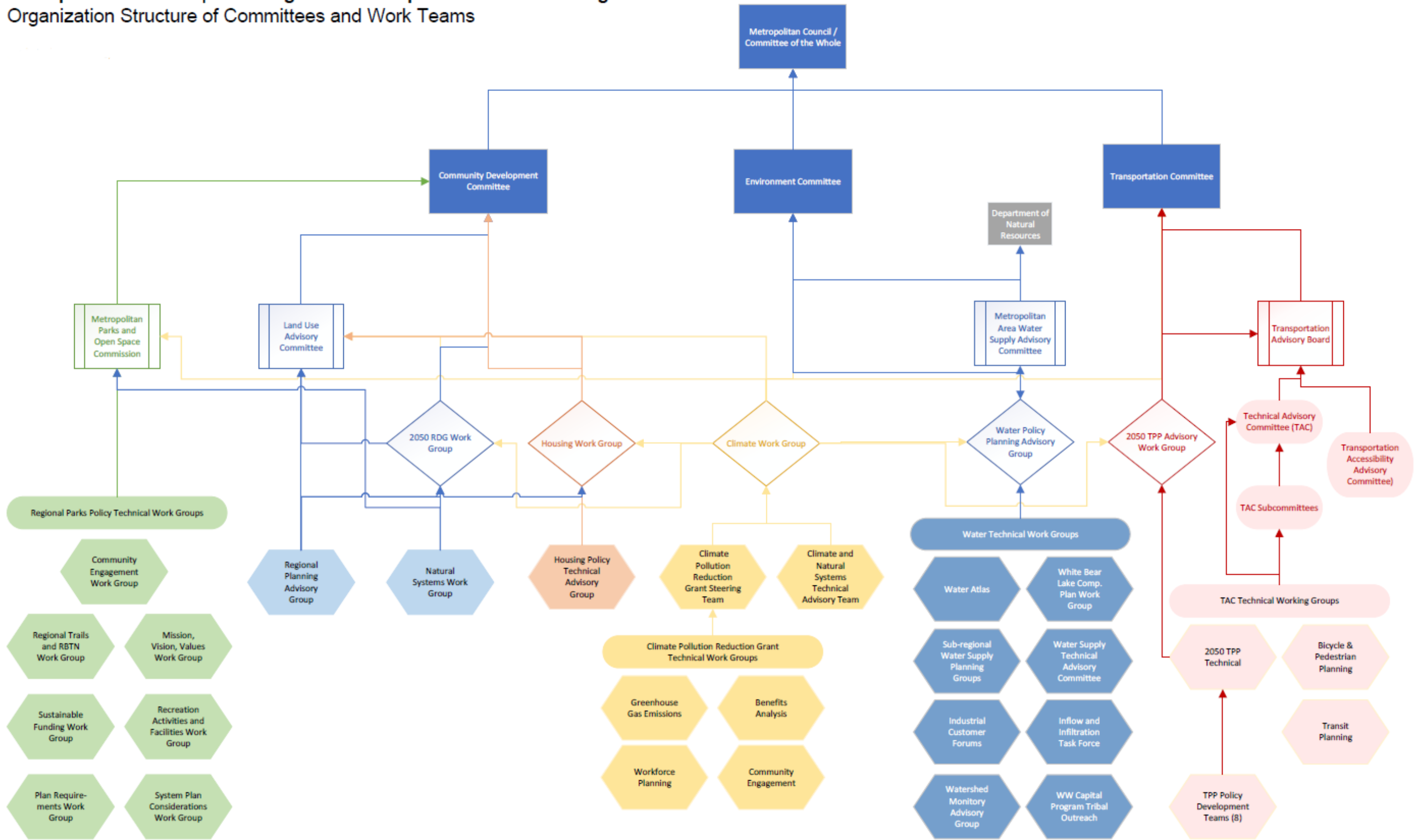
- Contributing studies and plans - Transportation, Regional Parks Visitor Study, Water Values Study, 2040 Comprehensive Plan Composite, annual reports on development trends, and many more
- Listening sessions, focus groups, workshops, surveys
- Formal policy cohorts (Young Leaders Collaborative and Community Leaders Collaborative)
- American Indian Advisory Council
- Conversations with groups as requested, such as Metro Cities policy committees, Municipal Legislative Commission, Regional Council of Mayors, and others
- Art + Policy engagement

Regular and ongoing engagement

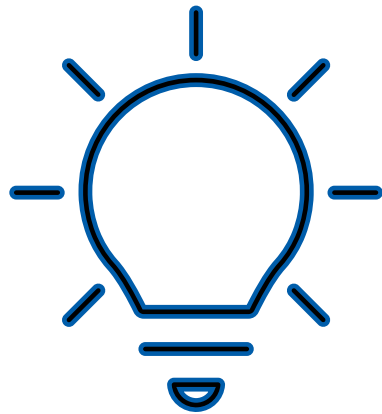


Metropolitan Council | 2050 Regional Development Guide Planning Process

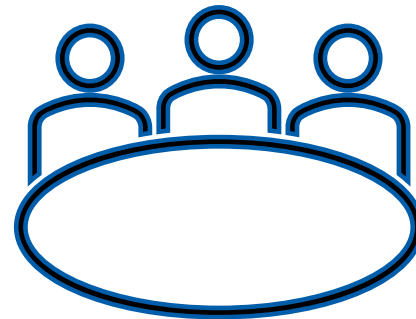
Organization Structure of Committees and Work Teams



A collaborative, iterative framework



Ideas are brought forward from data, analysis, local plans, conversations with partners, people in the region, industry experts



Advisory committees, technical teams, and working groups with members from local governments, partner organizations, and Met Council members worked together to create solutions



We created recommended policies together, refined them through engagement and feedback, and adjusted based on experience, data, and additional analysis

Imagine 2050 Public Comment Period



- Public comments for Imagine 2050 (all policy areas) were accepted from **August 15 to October 7**.
- Comments accepted in multiple forms:
 - Online via engage.metrocouncil.org
 - Email
 - Mail
 - In-person (Art + Policy events, community events, and Public Hearing)
- Received more than 1,200 comments from approximately 500 organizations and individuals.

Who have we heard from?



Imagine 2050 public comments

Overall participation data

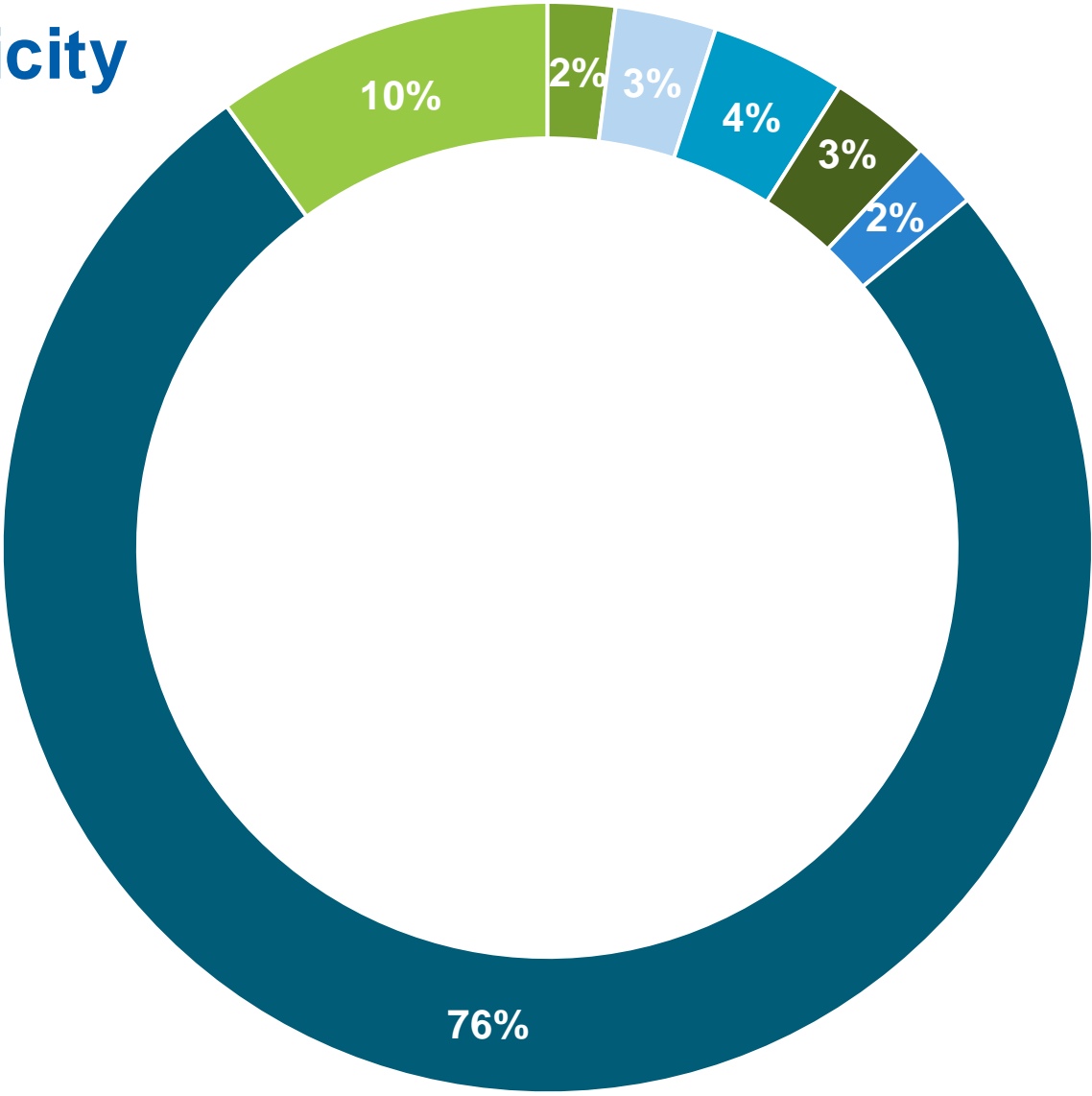
- 7 counties
- 58 cities
- 12 non-profit/advocacy organizations
- 2 state agencies
- 1 federal agency
- 2 regional parks agencies (in addition to cities and counties)

Other details

- In person comments – 133
- Public hearing testifiers – 12
- Online portal contributors (people) – 240
- Online portal contributions – more than 1,000
- Online portal plan downloads – more than 3,200
 - More than 100 in each of the major policy areas

Online portal participants

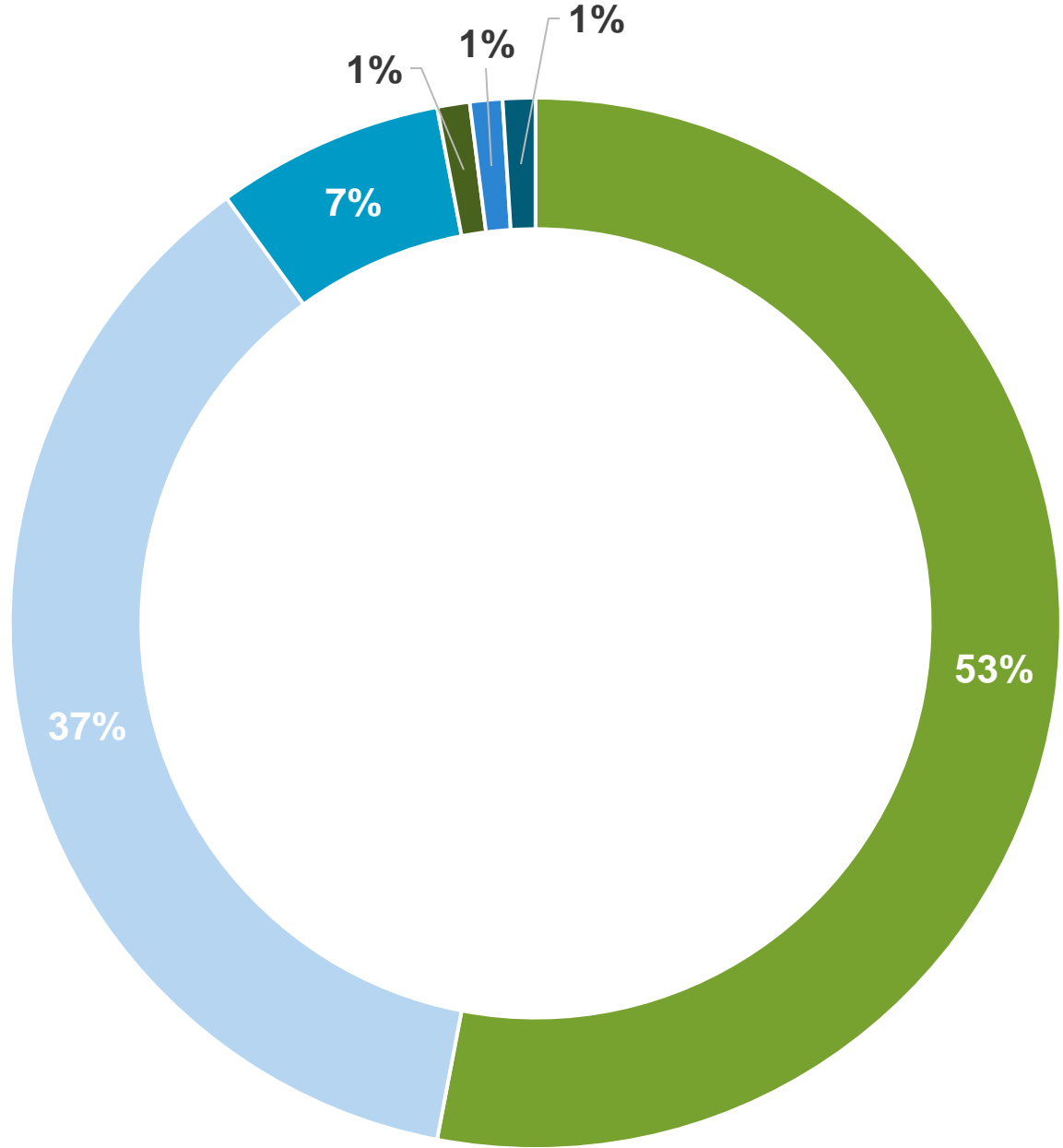
Demographic questions: ethnicity



- American Indian or Alaskan Native
- Asian or Asian American
- Black or African American
- Hispanic or Latinx
- Middle Eastern or North African
- White
- Other

Online portal participants

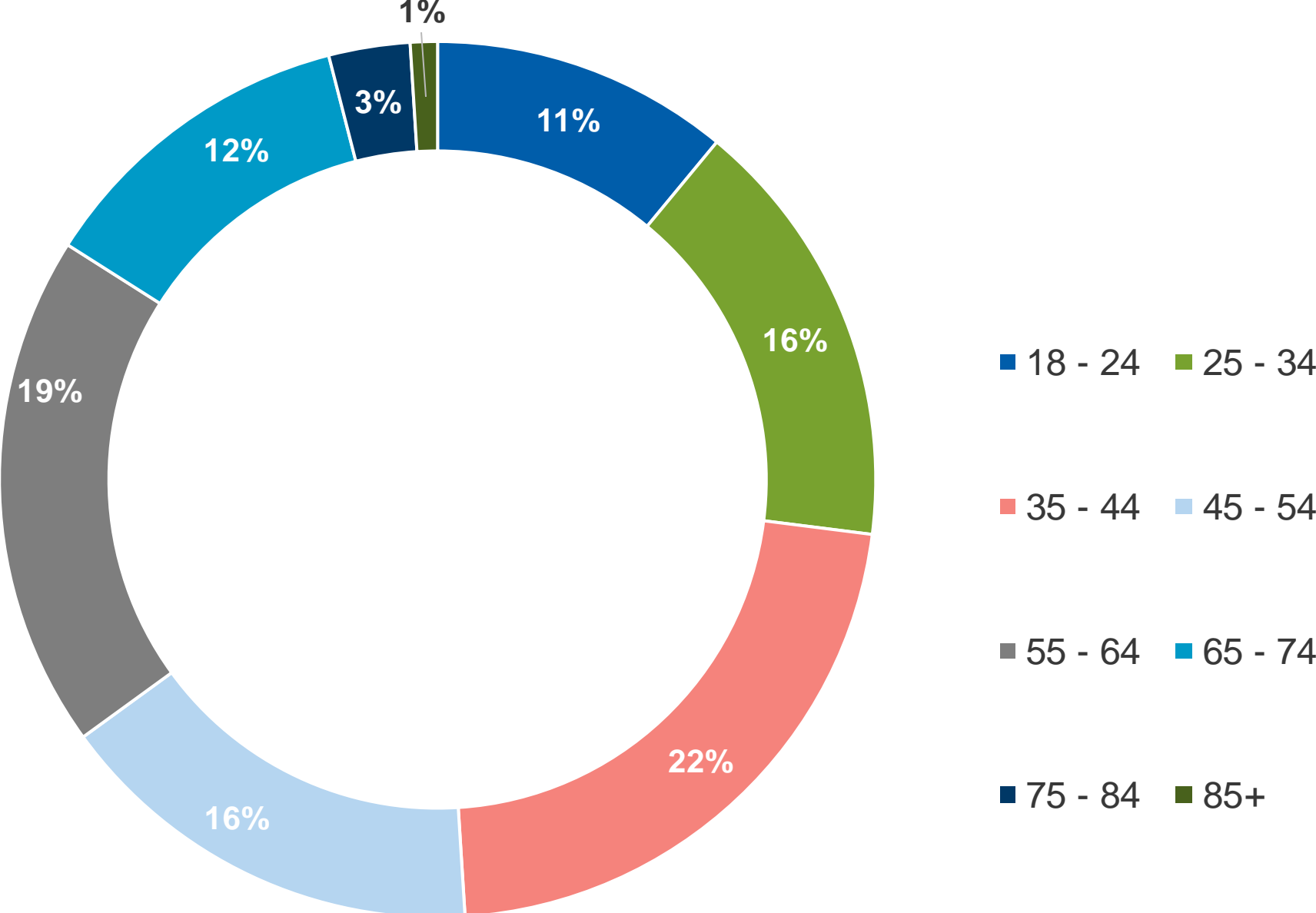
Demographic questions: gender identity



- Man
- Woman
- Prefer not to answer
- Another gender identity
- Transgender
- Non-binary

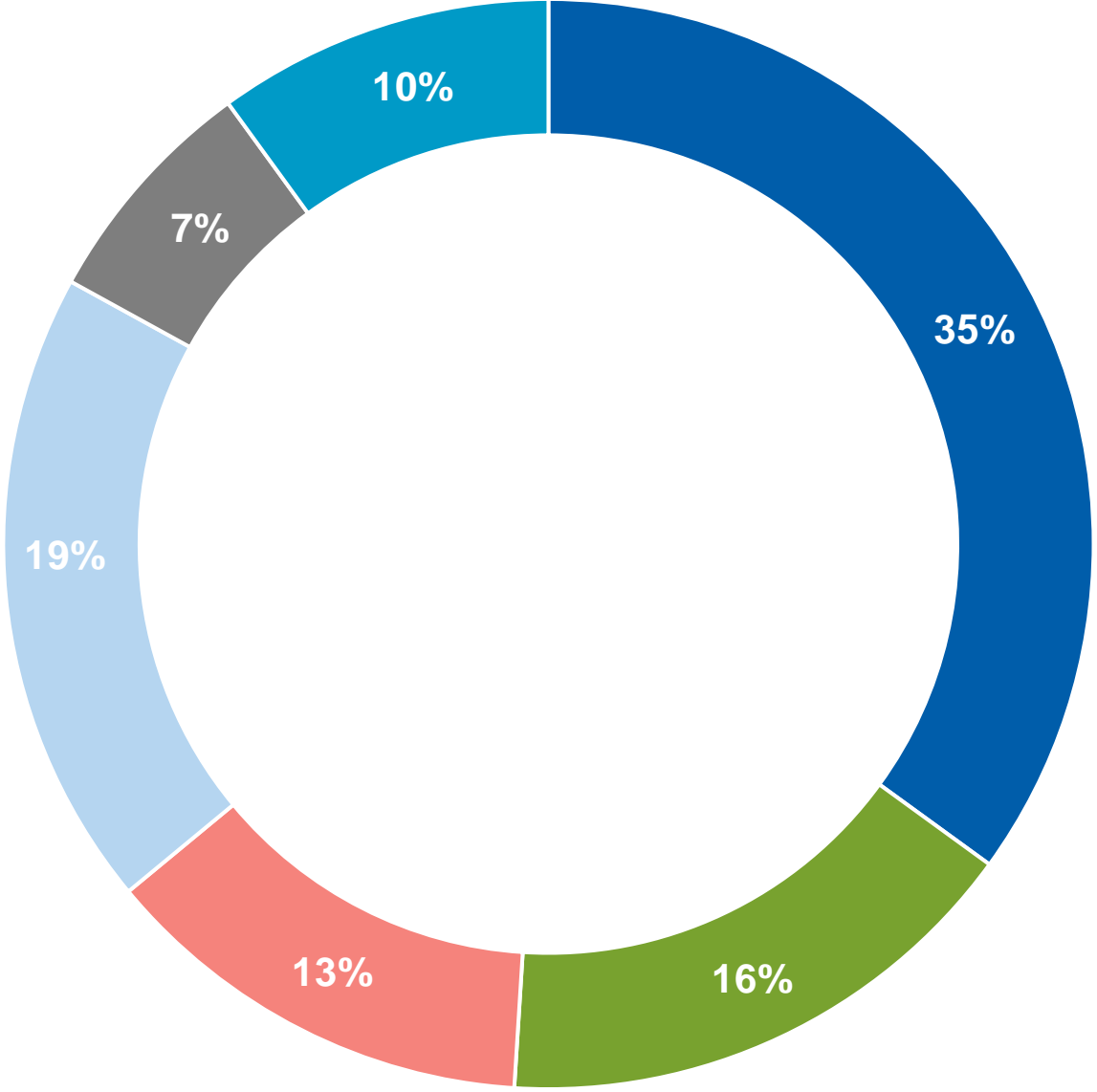
Online portal participants

Demographic questions: age



Online portal participants

Demographic questions: income



- \$150,000 and above
- \$100,000 to \$149,999
- \$80,000 to \$99,999
- \$50,000 to \$79,999
- \$30,000 to \$49,999
- Less than \$30,000

Social media impact



Social media:

- Facebook ads
 - 3,700 clicks
 - 186,000 reached
- Instagram posts
 - 12,000 views
 - 700+ interactions
- Overall engagement increased exponentially because of paid campaign, which makes our organic reach more significant

Facebook – promotions by district

Top policy areas by district

- District 1 – Land Use
- District 2 – Land Use
- District 3 – Land Use/Water/Parks (tie!)
- District 4 – Land Use
- District 5 – Transportation
- District 6 – Land Use/Transportation
- District 7 – Transportation/Water
- District 8 – Transportation
- District 9 – Transportation/Land Use
- District 10 – Transportation
- District 11 – Land Use

- District 12 – Transportation/Land Use
- District 13 – Parks/Transportation
- District 14 – Housing
- District 15 – Housing/Transportation
- District 16 – Housing/Land Use

Top district per policy area

- Housing – District 14
- Land Use – District 4
- Parks – District 13
- Transportation – District 5
- Water – District 7

What did we hear?



High Level Themes – Residents



Across all of Imagine 2050

- Generally supportive of the regional vision, values, and goals – comments on whether vision, values and goals resonated with them and their lived experiences.
- Residents wanted to make sure that the needs of disabled people, elders, and youth were served by 2050 policies.
- Overwhelmingly supported climate change mitigation from the Council.
- Cost and affordability were important, including financial access to housing, transportation, and other necessities.
- Residents want the region to be accessible to people with disabilities and compliance with ADA requirements.
- A smaller number of residents provided feedback about specific policy areas, especially Land Use and Transportation. The most frequently commented on policy chapters were Land Use and Transportation

High Level Themes – Local Governments



Across all of Imagine 2050

Support / alignment with regional goals and values

Requests for:

- Clarification of terms and what is required
- Technical assistance / funding support
- Flexibility in implementation
- Collaboration with suggested additional government partners

Concerns:

- Policies are burdensome to communities - local constraints on capacity or funding or both
- Policies are outside of Council authority and take away local control
- More expensive costs for development and housing
- Impacts to historical character or local community character
- Policies are disadvantageous to suburban/rural communities
- External factors beyond local community control make implementation difficult

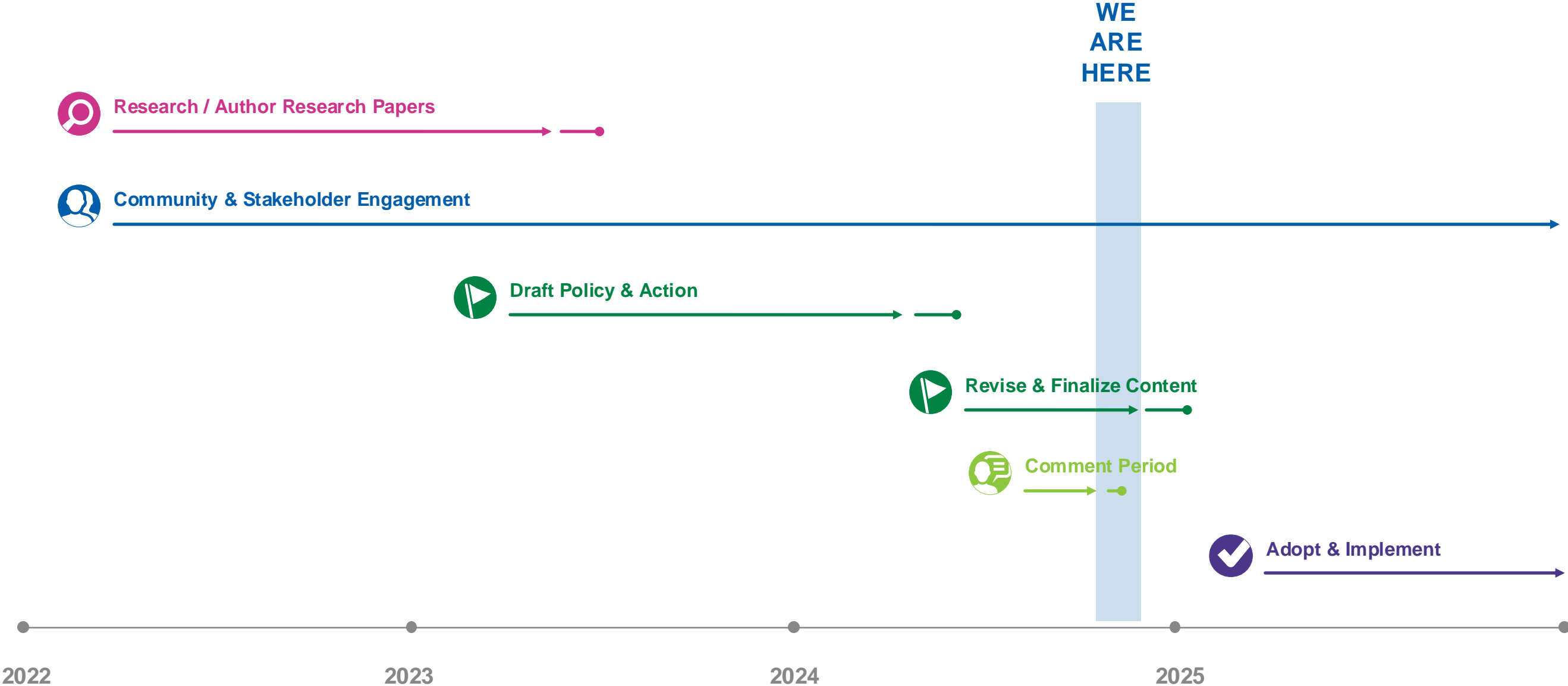
High Level Themes – Non-Profit / Advocacy Organizations



Across all of Imagine 2050

- Support for the "direction the Met Council was heading" - particularly around climate and housing.
 - Some organizations even encouraged the Met Council to "go further".
- Provided more high level comments about support or lack thereof for policies. They provided recommendations to strengthen policies from the lens of their organization's mission.
- Often offered specific actions for neighborhood/local-level implementation.
 - Offered insight around tools, funding strategies, and statutes that the Met Council could leverage to further equity-related policies outlined in policy plans.
- While some organizations provided comments by separate policy areas, many advocacy organizations took a more integrated, intersectional approach.
 - Described intersections between the different policy areas and encouraged internal collaboration.

Plan Timeline



OCTOBER

NOVEMBER

DECEMBER

JANUARY

FEBRUARY

11/8 Housing Work Group considers comments

11/20 RDG Work Group considers RDG & Land Use comments

11/7 MPOSC considers Parks comments
11/18 CDC considers Parks comments

11/6 TAC reviews TPP
11/14 TAC Planning reviews TPP
11/20 TAB reviews TPP

10/23 MAWSAC considers public comments on MWSP

11/13 MC update on public comment process

12/2 CDC considers Housing comments

12/2 CDC considers RDG & Land Use comments

12/5 MPOSC continued (if needed)

12/4 TAC reviews TPP
12/9 TC reviews TPP

12/10 EC considers public comments
12/11 MAWSAC approves MWSP

12/18 COW update on local forecasts

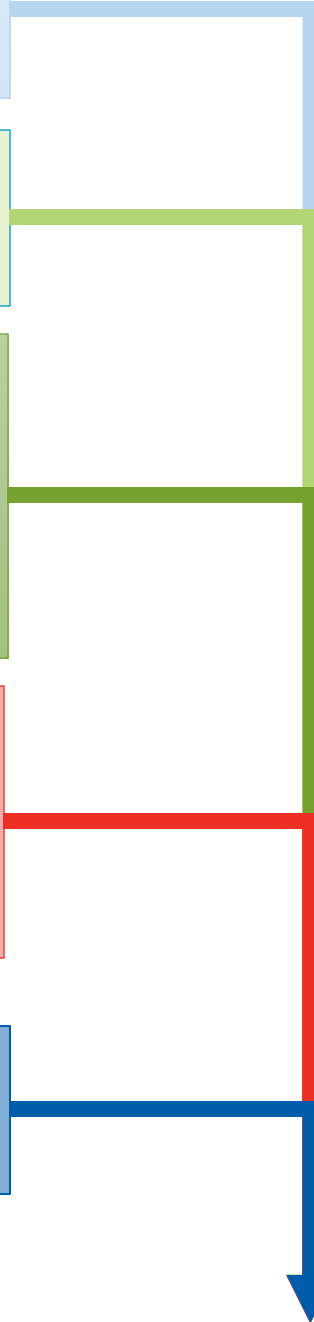
1/21 CDC recommends Housing adoption

1/21 CDC recommends RDG & Land Use adoption

1/9 MPOSC recommends Parks adoption
1/21 CDC recommends Parks adoption

1/15 TAB recommends TPP adoption
1/27 TC recommends TPP adoption

1/21 EC recommends WPP



2/12 Council adopts Imagine 2050



Learn More

LisaBeth Barajas
Michelle Fure

Thanks to all Met Council staff that contributed to the public comment period and analysis, including:

Karah Barr
Sarah Gong
Tammy Livingston Owen
Sara Maaske
Lanya Ross
Darcie Vandegrift

Art + Policy Team
Regional planning teams
Planning team comment leads:

- Steve Christopher
- Todd Graham
- Maia Guerrero-Combs
- Jed Hanson
- Colin Kelly
- Gabriela Olvera
- Kevin Phan
- Angela Torres

