

# 2025 Comprehensive Economic Development Strategy Update



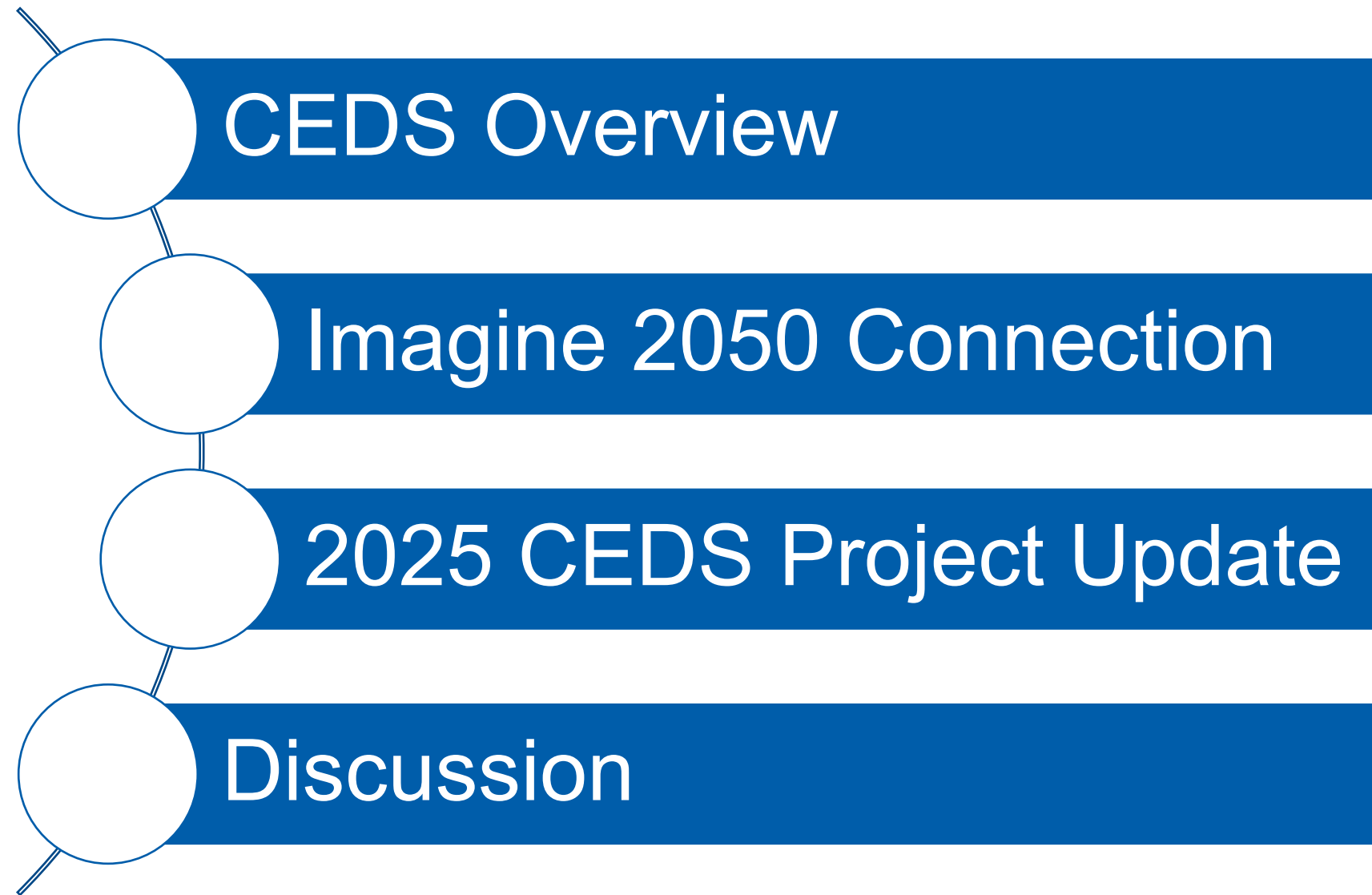
Baris Gumus-Dawes

Metropolitan Council

August 27, 2025



# Overview



# Comprehensive Economic Development Strategy



# What is a Comprehensive Economic Development Strategy (CEDS)?



Document to inform the 7-county region's economic development efforts



Required to be eligible for federal EDA grants

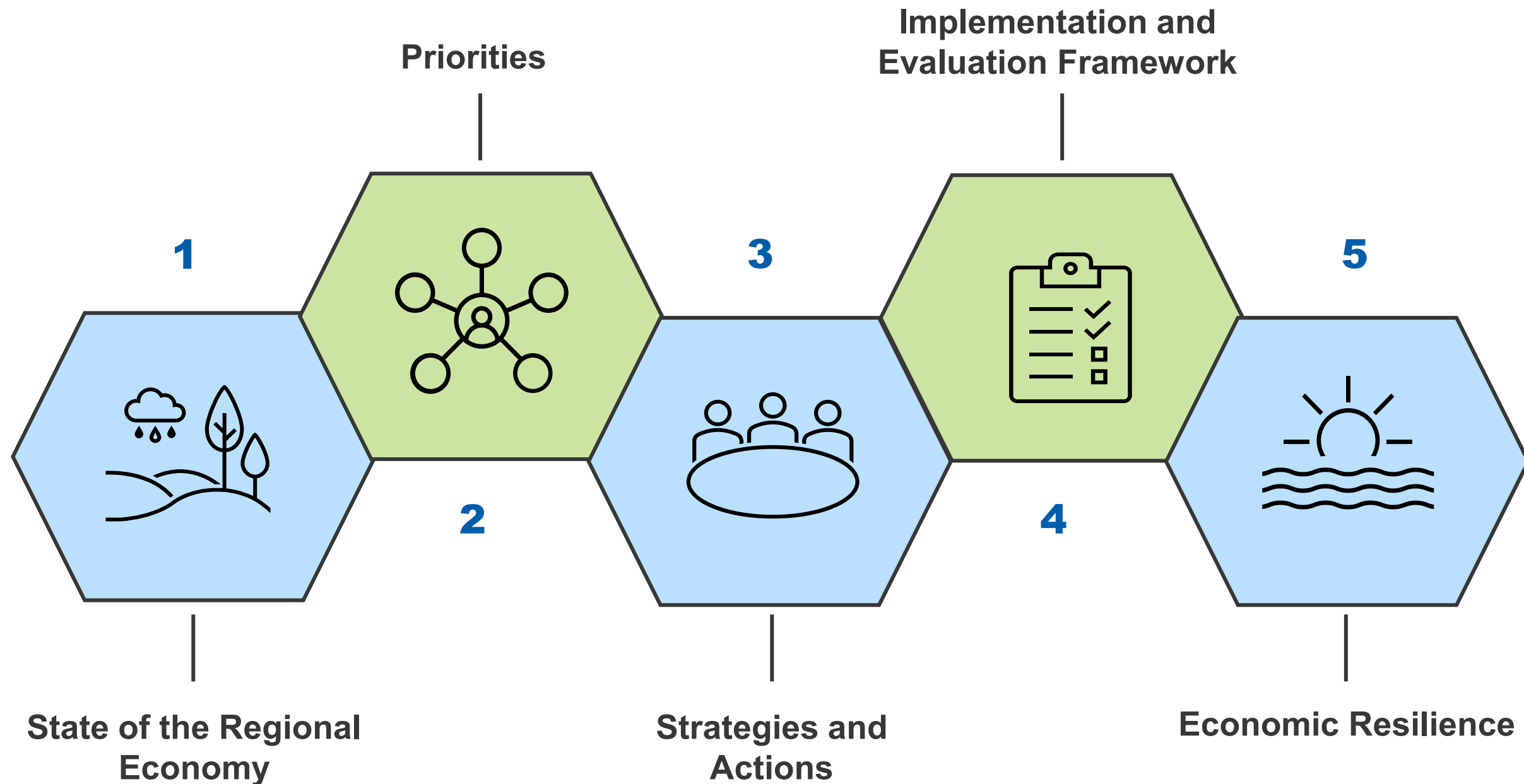


Collective vision for the region's economic future



A broad scan of regional economic development initiatives

# CEDS Structure



# 2020 CEDS: Regional Economic Framework

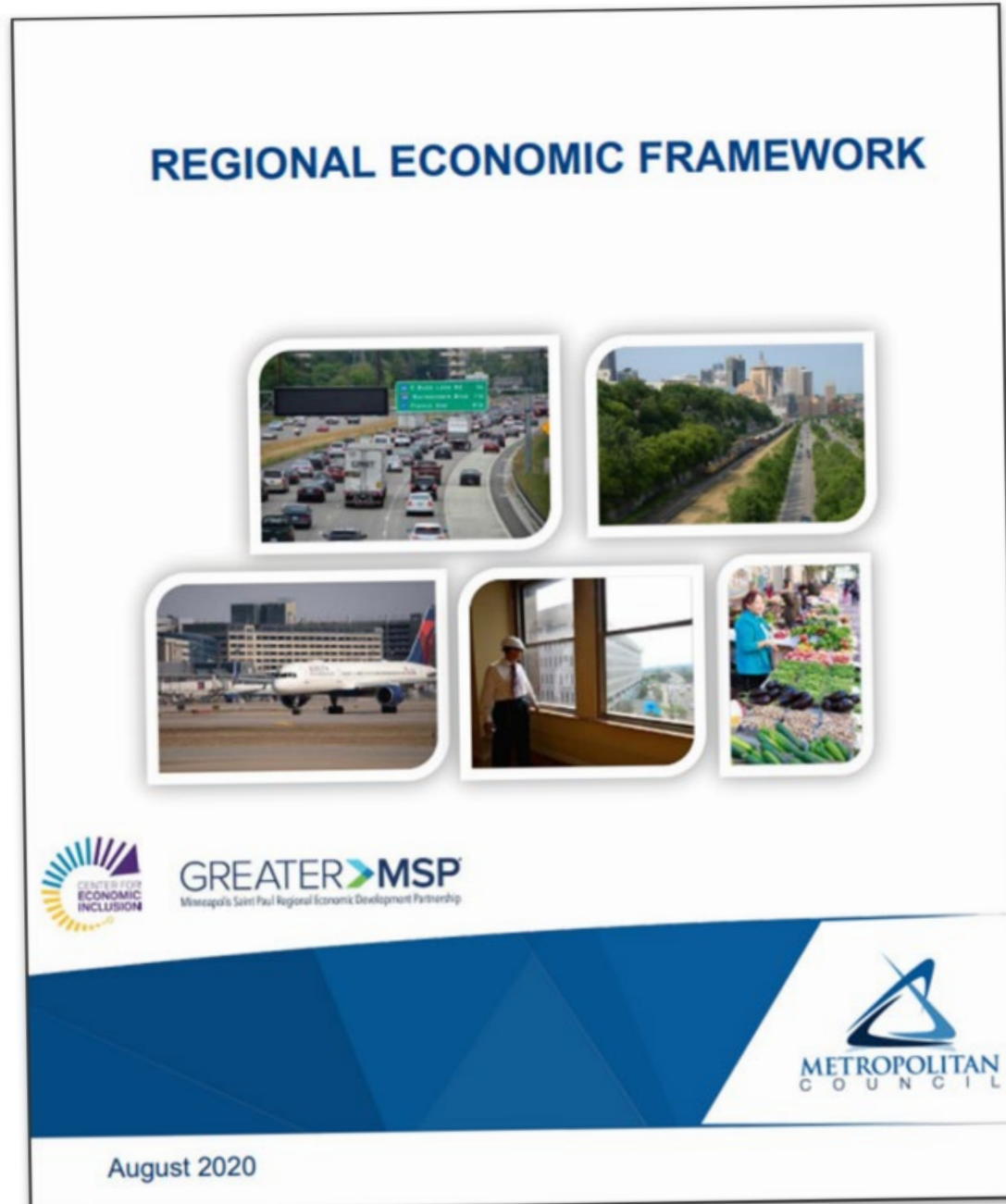
## REGIONAL ECONOMIC FRAMEWORK



**GREATER MSP**  
Minneapolis Saint Paul Regional Economic Development Partnership



# 2020 Regional Economic Framework (REF)



## Overview

- Developed collaboratively by Met Council, Greater MSP and Center for Economic Inclusion, with partial support from the McKnight Foundation.
- Adopted by the Council in August 2020.
- Serves as the region's current [Comprehensive Economic Development Strategy](#).

# REF Strategic Priorities

Regional Brand  
& Image

Racial Inclusion

Workforce &  
Skills

Job Growth

Talent Migration  
& Retention

Startups &  
Innovation

New Climate  
Economy

Transportation  
& Mobility

Affordability



# Imagine 2050



# Part of Our Regional Goals



## Our region is equitable and inclusive

Racial inequities and injustices experienced by historically marginalized communities have been eliminated; and all people feel welcome, included, and empowered.



## Our communities are healthy and safe

All our region's residents live healthy and rewarding lives with a sense of dignity and wellbeing.



## Our region is dynamic and resilient

Our region meets the opportunities and challenges faced by our communities and economy including issues of choice, access, and affordability.



## We lead on addressing climate change

We have mitigated greenhouse gas emissions and have adapted to ensure our communities and systems are resilient to climate impacts.



## We protect and restore natural systems

We protect, integrate, and restore natural systems to protect habitat and ensure a high quality of life for the people of our region.



# Imagine 2050 Connection



- Provides context on the economic factors influencing the Council's policy development.
- Includes a regional economic overview informed by a SWOT\* analysis.
- Highlights priorities directly relevant to the Council's work.

\*Strengths, Weaknesses, Opportunities, and Threats



# Strategic Priorities – Council Connection

Regional Brand  
& Image

Racial Inclusion

Workforce &  
Skills

Job Growth

Talent Migration  
& Retention

Startups &  
Innovation

New Climate  
Economy

Transportation  
& Mobility

Affordability

# 2025 Comprehensive Economic Development Strategy



# 2025 CEDS: A Collaborative Approach



CEDS Committee



Expert Interviews



Public Hearing



# CEDS Committee



SET UP A REGIONAL TABLE FOR  
A WIDE RANGE OF  
STAKEHOLDERS



INFORM THE FUTURE  
DIRECTION OF ECONOMIC  
DEVELOPMENT



PROVIDE A VENUE FOR  
COLLABORATIVE ALIGNMENT  
OF STRATEGIES

Meeting materials are published at <https://metro council.org/Planning/Comprehensive-Economic-Development-Strategy.aspx>

# Participating Organizations

Center for Economic Inclusion

City of Bloomington

City of Minneapolis

City of Saint Paul

Dakota County

DEED

Great Plains Institute

Great River Energy

Greater MSP

HealthPartners

Hennepin County

Jones Lang LaSalle Incorporated (JLL)

Medical Alley

Metro Economic Development Association

Minneapolis Downtown Council

Minnesota Business Coalition for Racial Equity

Minnesota Freight Advisory Committee

MN CDFI Coalition

MN Technology Assoc

Project for Pride in Living

Ramsey County

Saint Paul Chamber

Saint Paul Port Authority

Scott County

TC LISC

University of Minnesota

# Expert Interviews on Strategic Priorities

Regional Brand  
& Image

Racial Inclusion

Workforce &  
Skills

Job Growth

Talent Migration  
& Retention

Startups &  
Innovation

New Climate  
Economy

Transportation  
& Mobility

Affordability

The strategic priorities are adapted from the Greater MSP Partnership, which developed these themes over the past decade. Greater MSP continues to implement and refine these regional strategies today.



# CEDS Engagement



## Engagement on the CEDS

- 26-person CEDS Committee
- 14-16 Individual interviews with people experienced in economic and community development
- American Indian focus group with people experienced in economic and community development
- Presentation and input from Land Use Advisory Committee and Regional Planners Advisory Group
- Survey to 200+ municipal representatives – elected officials, community development directors, economic development directors, and planners
- Public Hearing on the Draft 2025 CEDS

# Timeline



# Discussion



## Questions

1. Do you have any questions about the steps and process of updating the CEDS and Met Council's role in that effort?
2. Do you concur with advancing and updating the nine strategic priorities identified in the 2020 CEDS?
3. What additional information would be helpful in preparation for bringing the 2025 CEDS for formal consideration by the Council this Fall?
4. Do you have any other questions or comments on the 2025 CEDS update?





## **Baris Gumus-Dawes**

Planning Analyst,  
Community Development  
[Baris.Dawes@metc.state.mn.us](mailto:Baris.Dawes@metc.state.mn.us)

