

Metropolitan Parks and Open Space Commission

Meeting date: January 3, 2019

For the Community Development Committee of January 22, 2019

For the Management Committee of January 23, 2019

For the Metropolitan Council meeting of February 13, 2019

Subject: Regional Parks Funding Allocation Policy and Regional Parks Fund Distribution Policy

District(s), Member(s): All

Policy/Legal Reference: Minnesota Constitution, Article XI, Section 15; Minn. Stats. §§ 85.53 and 473.351; *2040 Regional Parks Policy Plan*

Staff Prepared/Presented: Libby Starling, Director of Regional Planning (651-602-1135); Heather Aagesen-Huebner, Director of Finance and Administration for CD / MTS (651-602-1728); Emmett Mullin, Parks Manager (651-602-1360)

Division/Department: Community Development / Regional Planning

Proposed Action

Recommend that the Metropolitan Council:

1. Add the Regional Parks Funding Allocation Policy to its agency-wide Policies and Procedures.
2. Adopt the Regional Parks Fund Distribution Policy.
3. Direct Council staff to develop necessary policy language relating to the Interest Earnings and the Set-Aside Competitive Equity Grant Program to propose for amendment into the Fund Distribution Policy.

Background

The 2018 update to the *2040 Regional Parks Policy Plan*, adopted on November 28, 2018, removed significant finance-related policies and procedures from the *2040 Regional Parks Policy Plan*. These finance related policies and procedures were removed with the intent of placing them in the Council's organizational policies and in an administrative guide so that the Council could be more nimble in response to legislative changes and improve and adjust administrative procedures as needed.

Rationale

The recent adoption of the *2040 Regional Parks Policy Plan* has orphaned finance-related policies that warrant formal policymaker review and adoption.

Thrive Lens Analysis

While the full *2040 Regional Parks Policy Plan* advances the *Thrive MSP 2040* outcomes of Livability and Equity, these finance policies advance the Thrive outcome of Stewardship by responsibly managing the Council's financial resources supporting the Regional Parks System.

Funding

Updating the Regional Parks Policy Plan is a regular item in the Community Development Division work plan.

Known Support / Opposition

The proposed policies respond to comments from the November 8, 2018 Metropolitan Parks and Open Space Commission meeting, the November 19, 2018 Community Development Committee meeting, and a November 29, 2018 discussion with the regional park implementing agencies.

Regional Parks Funding Allocation

Section/Number:	3-xxx-xxx	Total Pages:	2
Dept. Responsible:	Regional Administration and Community Development	Effective Date:	
Special Note:		Last Revision Date:	
		Last Review Date:	
		Revision No.	

I. Policy

The Metropolitan Council shall abide by state statute, session law, and the *Regional Parks Policy Plan* when allocating funds received from the State of Minnesota or Council funds for the Regional Parks System (that is, the regional recreation open space system established and governed by state statute) as well as any direct state appropriations for parks or recreational purposes.

II. Purpose of policy

This policy provides a framework for the Council's Regional Parks Fund Distribution Policy separate from the *Regional Parks Policy Plan* and establishes the responsibilities and expectations for the allocation of State or Council funding for the Regional Parks System.

III. Background and reasons for policy

The State of Minnesota provides funding to the Metropolitan Council for the Regional Parks System. These funds and any Council funds, whether matching or supplemental, are allocated to the following programs:

- a. Operation and Maintenance (O&M), appropriated by the state of Minnesota under [Minn. Stat. § 473.351, subd. 3](#) for the cost of the operation and maintenance of waters, lands, and facilities that are part of the Regional Parks System.
- b. Parks and Trails Legacy Fund Program (PTLF), established under the [Minnesota Constitution, Article XI, Section 15](#) to support parks and trails of regional or statewide significance.
- c. Park Acquisition Opportunity Fund (PAOF) assists Agencies in acquiring land for the Regional Parks System with state and regional funding sources in two separate accounts: 1) The Parks and Trails Legacy Fund / Park Acquisition Opportunity Fund (PTLF/PAOF) account, funded by state Legacy dollars and Regional Park bonds per [Minn. Stat. § 85.53](#); and 2) The Environment and Natural Resources Trust Fund / Parks Acquisition Opportunity Fund (ENRTF/PAOF) account, funded by ENRTF dollars.
- d. Regional Parks Bonding Program: State bonds appropriated for the Regional Park System.
- e. Direct state appropriations for parks or recreational purposes to local government jurisdictions, including the Regional Parks Implementing Agencies, counties, cities, or townships.
- f. Other programs as directed or allowed by the Council or Legislature.

IV. Implementation/Accountability

The Council shall, with the advice of the Metropolitan Parks and Open Space Commission, adopt the Regional Parks Fund Distribution Policy, review the Policy annually and amend the Policy as needed.

The Regional Administrator shall establish the framework and accountability for the effective implementation of the policy. The Community Development Division Director is responsible for the development of the sub-recipient administrative guide.

The Council shall publish the Regional Parks Funding Allocation Policy, the Regional Parks Fund Distribution Policy, and the Regional Parks System sub-recipient administrative guide on the Council's website.

Revision/Review Tracking

Date	Revision No.	Review Only – No changes
	1	

REGIONAL PARKS SYSTEM FUND DISTRIBUTION POLICY



The Council’s mission is to foster efficient and economic growth for a prosperous metropolitan region

Metropolitan Council Members

Vacant	Chair	Edward Reynoso	District 9
Vacant	District 1	Marie McCarthy	District 10
Lona Schreiber	District 2	Sandy Rummel	District 11
Jennifer Munt	District 3	Harry Melander	District 12
Deb Barber	District 4	Richard Kramer	District 13
Vacant	District 5	Jon Commers	District 14
Gail Dorfman	District 6	Steven T. Chávez	District 15
Gary L. Cunningham	District 7	Wendy Wulff	District 16
Cara Letofsky	District 8		



The Metropolitan Council is the regional planning organization for the seven-county Twin Cities area. The Council operates the regional bus and rail system, collects and treats wastewater, coordinates regional water resources, plans and helps fund regional parks, and administers federal funds that provide housing opportunities for low- and moderate-income individuals and families. The 17-member Council board is appointed by and serves at the pleasure of the governor.

On request, this publication will be made available in alternative formats to people with disabilities. Call Metropolitan Council information at 651-602-1140 or TTY 651-291-0904.

TABLE OF CONTENTS

1		
2	I. Introduction	1
3	A. Purpose.....	1
4	B. Regional Parks Implementing Agencies	1
5	C. Regional Parks System Funding	1
6	1. Operation and Maintenance.....	1
7	2. Parks and Trails Legacy Fund Program.....	1
8	3. Park Acquisition Opportunity Fund.....	1
9	4. Regional Parks Bonding Program.....	2
10	D. Annual Review	2
11	E. Administrative Guidance.....	2
12	II. Operation and Maintenance	3
13	A. Funding Source	3
14	B. Allocation.....	3
15	C. Eligible costs and activities.....	3
16	D. Required Match.....	4
17	III. Parks and Trails Legacy Fund Program	5
18	A. Funding Source.....	5
19	B. Allocation.....	5
20	C. Eligible Projects and Costs.....	5
21	D. Amendments	6
22	E. Required Match.....	7
23	IV. Park Acquisition Opportunity Fund Program	8
24	A. Funding Source.....	8
25	B. Allocation.....	8
26	C. Eligible Projects and Costs.....	8
27	D. Eminent Domain.....	9
28	E. Revenue from Nonrecreational and Recreational Uses	9
29	F. Unspent Funds.....	10
30	G. Required Match.....	10
31	V. Regional Parks Bonding Program	11
32	A. Funding Source.....	11
33	B. Allocation.....	11
34	C. Eligible Projects and Costs.....	11
35	D. Revenue from Nonrecreational and Recreational Uses	12
36	E. Amendments	13
37	F. Future Reimbursement Consideration	13
38		

1 **I. Introduction**

2 The Metropolitan Council (Council) administers a variety of funding sources and grant programs for the
3 betterment of the Regional Parks System. These funds are awarded or passed through to the Regional
4 Parks Implementing Agencies (Agencies). Legal requirements for these programs vary, and the Council
5 is responsible for ensuring compliance with all relevant requirements. Agencies are responsible for
6 knowing and complying with their grant agreements, which may specify additional funding
7 requirements.

8 **A. Purpose**

9 The Minnesota Constitution, Minnesota Statutes, and the *Regional Parks Policy Plan* articulate the
10 structure for the funding sources and programs that the Council administers. This document
11 establishes the Council’s policies and priorities for the use of Regional Parks funds.

12 **B. Regional Parks Implementing Agencies**

13 [Minn. Stats. § 473.351](#) limits regional parks funding to Agencies and defines them to be:

- 14 • Anoka County
- 15 • City of Bloomington
- 16 • Carver County
- 17 • Dakota County
- 18 • Minneapolis Parks and Recreation Board
- 19 • Ramsey County
- 20 • City of Saint Paul
- 21 • Scott County
- 22 • Three Rivers Park District
- 23 • Washington County

24 **C. Regional Parks System Funding**

25 **1. Operation and Maintenance**

26 The state of Minnesota appropriates money under [Minn. Stat. § 473.351](#) for the cost of
27 providing for the operation and maintenance (O&M) of waters, lands, and facilities that are part
28 of the Regional Parks System.

29 **2. Parks and Trails Legacy Fund Program**

30 The [Minnesota Constitution, Article XI, Section 15](#) established the Parks and Trails Legacy
31 Fund (PTLF) to support parks and trails of regional or statewide significance.

32 **3. Park Acquisition Opportunity Fund**

33 The Council established the Park Acquisition Opportunity Fund (PAOF) to assist Agencies in
34 acquiring land for the Regional Parks System. The PAOF comprises state and regional funding
35 sources in two separate accounts:

- 36 • The Parks and Trails Legacy Fund / Park Acquisition Opportunity Fund (PTLF/PAOF)
37 account funded by state Legacy dollars and regional park bonds. [Minn. Stat. § 85.53](#)

1 requires that the Council match every \$3 in PTLF land acquisition funds with \$2 in regional
2 park bonds.

- 3 • The Environment and Natural Resources Trust Fund / Park Acquisition Opportunity Fund
4 (ENRTF/PAOF) account funded by ENRTF dollars and Council funds. The Council matches
5 every \$3 in ENRTF funds with \$2 in Council funds for Regional Parks System land
6 acquisition.

7 **4. Regional Parks Bonding Program**

8 There are two funding sources that are part of the Regional Parks Bonding Program:

- 9 • Regional park bonds issued by the Council for the Regional Parks System.
- 10 • State bonds appropriated for the Regional Parks System.

11 Per the [2040 Regional Parks Policy Plan](#) and Council's Capital Financing Policy, the Council
12 matches every \$3 of state general obligation bonds with \$2 of regional park bonds.

13 Bonds may be taxable or non-taxable..

14 **D. Annual Review**

15 The Council shall, with the advice of the Metropolitan Parks and Open Space Commission, adopt
16 the Regional Parks Fund Distribution Policy, review the Policy annually, and amend the Policy as
17 needed.

18 **E. Administrative Guidance**

19 More detailed information and instructions on subrecipient processes and procedures can be found
20 in the Regional Parks System sub-recipient administrative guide. This document is under
21 development and will be completed in 2019.

22 The following sections outline funding priorities for each funding source and program.

1 II. Operation and Maintenance

2 Since 1985, the state of Minnesota has appropriated money under [Minn. Stat. § 473.351](#) for the cost of
3 providing for the operation and maintenance of waters, lands, and facilities that are part of the Regional
4 Parks System.

5 A. Funding Source

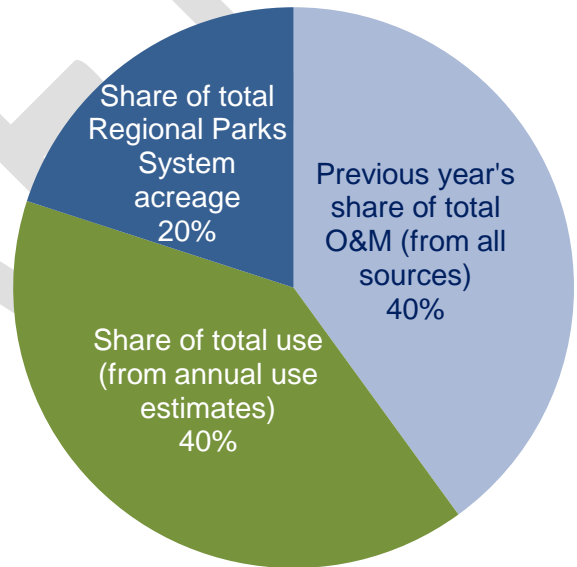
6 The state of Minnesota appropriates money the Council disburses to the Agencies to pay for a
7 portion of the cost of providing for the operation and maintenance of waters, lands, and facilities
8 that are part of the Regional Parks System. This money has come from two sources:

- 9 • State appropriations from the General Fund ([Minn. Stat., § 473.351](#))
- 10 • “Lottery in lieu of sales tax” ([Minn. Stat., § 297A.94\(h\)\(3\)](#))

11 B. Allocation

12 The Council distributes all Operation and
13 Maintenance funding to the Agencies according to
14 a formula based upon [Minn. Stat. § 473.351](#):

- 15 • 40% based on each Agency’s proportion of
16 total regional system visits as estimated in
17 the Council’s annual use estimates
- 18 • 40% based on each Agency’s proportion of
19 total regional system operation and
20 maintenance expenditures in the previous
21 calendar year
- 22 • 20% based on each Agency’s proportion of
23 total regional system land acreage, with
24 park reserve resource management land
25 divided by four and excluding the acreage
26 under any facilities the Council considers
27 inconsistent with Recreation Activities and Facilities – Strategy 1 of the *2040 Regional Parks*
28 *Policy Plan* including enterprise facilities



29 C. Eligible costs and activities

30 See the Regional Parks System sub-recipient administrative guide for more detailed guidance
31 about eligible and ineligible costs and activities.

32 Costs cannot be associated with activities or programming inconsistent with Recreation Activities
33 and Facilities – Strategy 1 of the *2040 Regional Parks Policy Plan*. Additionally, activities within
34 enterprise facilities, defined in the *2040 Regional Parks Policy Plan* as facilities that are expected to
35 generate sufficient revenues to cover their own costs such as golf courses, downhill ski areas, and
36 water parks, are not eligible for Operation and Maintenance funding. These facilities are not eligible
37 for regional park funds from the Council because enterprise-fund recreation facilities are expected
38 to raise money for their development and operation in the same way as their private sector
39 counterparts.

1 **D. Required Match**

2 There is no formal required match although these appropriations fund only a portion of operation
3 and maintenance expenses.

1 III. Parks and Trails Legacy Fund Program

2 In 2008, Minnesota voters passed the Clean Water, Land and Legacy Amendment, which created a
3 new 3/8ths cent state sales tax to be collected from July 2009-June 2034 to fund the restoration,
4 protection, and enhancement of Minnesota wildlife; protect clean water; pay for parks and trails; and
5 preserve Minnesota’s history and cultural heritage through arts and cultural programs. The Parks and
6 Trails Legacy Fund, one of four Legacy Amendment Funds, supports parks and trails of statewide or
7 regional significance.

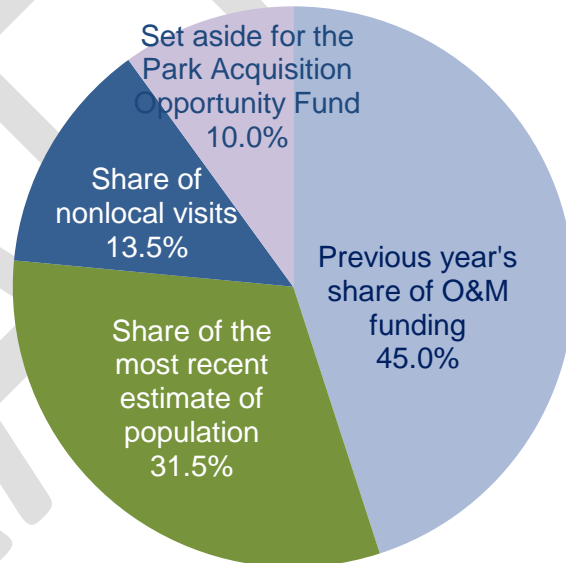
8 A. Funding Source

9 The [Minnesota Constitution, Article XI, Section 15](#) established the Parks and Trails Legacy Fund
10 (PTLF) to support parks and trails. Per [Minn. Stat. § 85.53](#), this fund supports only parks and trails
11 of regional or statewide significance. Along with state and Greater Minnesota regional parks and
12 trails, the Council receives a portion of the PTLF appropriations for the Regional Parks System.

13 B. Allocation

14 The Council distributes PTLF money to the
15 Agencies according to a formula defined in
16 [Minn. Stat. § 85.53](#):

- 17 • 45% based on each implementing
18 Agency’s share of O&M funding
19 according to the allocation formula in
20 Minn. Stat. § 473.351, subdivision 3;
- 21 • 31.5% based on each implementing
22 Agency's relative share of the most
23 recent estimate of the population of
24 the metropolitan area;
- 25 • 13.5% based on each implementing
26 Agency's relative share of nonlocal
27 visits based on the most recent user
28 visitation survey conducted by the Metropolitan Council; and
- 29 • 10% set aside for Park Acquisition Opportunity Fund (see more on p. 8).



30 C. Eligible Projects and Costs

31 Consistent with the [Minnesota Constitution, Article XI, Section 15](#), authorizing state statutes
32 (including [Minn. Stat. § 3.303](#)), and the [2040 Regional Parks Policy Plan](#), all projects submitted for
33 funding from PTLF must:

- 34 • Be within parks and trails of **regional or statewide significance**.
- 35 • Be consistent with the [Parks and Trails Legacy Plan](#), the foundational document for the
36 use of PTLF in the state, which specifies four strategic directions for use of all PTLF funds:
 - 37 ○ Connect People and the Outdoors: Develop stewards of tomorrow through efforts to
38 increase life-long participation in parks and trails.

- 1 ○ Acquire Land, Create Opportunities: Create new and expanded opportunities to serve
- 2 ○ current and future users.
- 3 ○ Take Care of What We Have: Provide safe, high-quality experiences through regular re-
- 4 ○ investment in infrastructure and natural resource management.
- 5 ○ Coordinate among Partners: Enhance coordination among the network of public, private,
- 6 ○ and nonprofit park and trail partners.
- 7 ● ***Be within the boundaries of the Regional Parks System*** (for capital projects only – for
- 8 ○ example, acquisitions, development, and conservation)
- 9 ○ Outreach activities outside the boundaries of the Regional Parks System are allowable if
- 10 ○ the Agency can demonstrate a direct tie between the outreach activities and use of the
- 11 ○ Regional Parks System.
- 12 ● Be consistent with the ***2040 Regional Parks Policy Plan***.
- 13 ● Be consistent with a ***Council-approved master plan*** prior to the Council awarding a grant
- 14 ○ agreement (for capital projects only – for example, acquisitions, development, and
- 15 ○ conservation).
- 16 ○ Outreach activities outside a Council-approved master plan are allowable if the Agency
- 17 ○ can demonstrate a direct tie between the outreach activities and use of the Regional
- 18 ○ Parks System.
- 19 ● ***Supplement, not substitute for, traditional sources of funding***. To ensure compliance
- 20 ○ with the requirements, projects funded with PTLF funds must:
- 21 ○ start new projects or programs;
- 22 ○ continue projects or programs without substituting Legacy funds for other funds; or
- 23 ○ expand or accelerate projects through the addition of Legacy funds.
- 24 ● Be substantially consistent with the project descriptions and dollar amounts ***approved by***
- 25 ○ ***each Agency's elected body***.
- 26 ● Have been reviewed by the Agency using the ***equity toolkit***.
- 27 ● Have been ***prioritized*** by the Agency in response to local capital and programmatic needs.

28 Agencies may use their PTLF allocation for land acquisition, supplementing the Park Acquisition
 29 Opportunity Fund although the Council does not match these funds.

30 **D. Amendments**

31 Grant agreements list conditions for amendments. If there are any unspent funds from a grant after
 32 the project is completed, grant agreements list conditions for amendments.

33 To maximize the efficiency of the work of the Metropolitan Parks and Open Space Commission and
 34 the Council, the Council has authorized its regional administrator or their designee to execute minor
 35 amendments to Regional Parks System grant agreements. Other amendments may require Council
 36 approval. See the Regional Parks System sub-recipient administrative guide for further information
 37 on amendment requests.

1 **E. Required Match**

2 None.

DRAFT

1 IV. Park Acquisition Opportunity Fund Program

2 Established in 2001, grants from the Park Acquisition Opportunity Fund (PAOF) assist Agencies in
3 acquiring land for the Regional Parks System.

4 A. Funding Source

5 The PAOF program has two funding sources:

- 6 • Parks and Trails Legacy Fund (PTLF): 10% of PTLF appropriations are set aside for land
7 acquisition through the PAOF.
- 8 • Environment and Natural Resources Trust Fund (ENRTF). The ENRTF acquisition
9 opportunity grant fund is comprised of direct appropriations received by the Legislative-
10 Citizen Commission on Minnesota Resources (LCCMR) for land acquisition. The LCCMR
11 establishes the requirements for ENRTF funding, including funding used as part of the
12 PAOF program.

13 For both accounts, the Council matches every \$3 in state funding with \$2 from Council funds.
14 [Minn. Stat. § 85.53, subd. 3](#) requires the match for acquisition funding from the PTLF; the Council
15 has chosen to match ENRTF funding for consistency.

16 B. Allocation

17 The Council's PAOF grant program is non-competitive and is awarded based on funding availability.
18 The Council awards grants on a first-come, first-served basis with the order determined by when
19 the Council determines that a grant request is eligible and complete.

20 Each Agency is eligible for up to \$1.7 million in PAOF funding per state fiscal year from each of the
21 two accounts, provided the total of appropriated funding and associated Council match is sufficient
22 to fund an acquisition. The maximum amount that each Agency can receive from the PAOF
23 program is \$3.4 million per fiscal year. The maximum amount that an Agency can receive for a
24 single PAOF grant is \$3.4 million, with \$1.7 million from each account. Agencies can use both
25 PAOF/ENRTF and PAOF/PTLF in a single acquisition to access the full amount of PAOF dollars
26 allowable (see the Regional Parks System sub-recipient administrative guide for additional
27 requirements that may be involved with acquisitions using both funding sources).

28 C. Eligible Projects and Costs

29 Consistent with authorizing state statutes and the [2040 Regional Parks Policy Plan](#), all PAOF
30 grants (both accounts) assist in the acquisition of property that is and will be:

- 31 • ***Within the boundaries of the Regional Parks System;***
- 32 • Consistent with the ***2040 Regional Parks Policy Plan*** or subject to an amendment to ***2040***
33 ***Regional Parks Policy Plan*** to designate the land as regional recreation open space;
- 34 • Consistent with a ***Council-approved master plan*** or a ***Council-approved acquisition***
35 ***master plan***;
- 36 • Located fully within ***Council-approved master plan boundaries*** prior to the Council
37 awarding a grant agreement; and
- 38 • Reserved for public use in perpetuity for the Regional Parks System.

1 Consistent with [authorizing state statutes](#) and the *2040 Regional Parks Policy Plan*, all grants from
2 the PAOF / ENRTF must additionally follow LCCMR requirements.

3 When funds are not available in the PAOF accounts, Agencies may choose to work with third
4 parties to temporarily acquire and hold eligible properties, for which the Agency may pursue a
5 PAOF grant at later date from the Council to complete the acquisition process.

6 Eligible PAOF costs are expenses directly related to the land acquisition consistent with the
7 Council-approved master plan. Grants for acquisition pay for the cost of real estate, relocation
8 assistance, special assessments existing at the time land was designated for the regional system,
9 land stewardship and legal fees and appraisals. Land stewardship is defined as boundary fencing
10 or marking stabilizing or rehabilitating natural resources to aid in reestablishing threatened natural
11 resources or to prevent non-natural deterioration thereof; preventing the deterioration of existing
12 structures; removal of unneeded structures, land forms or attractive nuisances; maintaining or
13 closing existing roads; and developing the unit to support minimal recreational use, including
14 access roads, parking lots, signage and restrooms until capital improvement funds are available.
15 Payment in lieu of local property taxes is an eligible land acquisition grant expenditure. See the
16 Regional Parks System sub-recipient administrative guide for more detailed guidance on eligible
17 and ineligible costs and activities.

18 **D. Eminent Domain**

19 Occasionally an Agency may need to acquire land by exercising its power of eminent domain by
20 initiating a condemnation proceeding. When land is acquired through the condemnation process, a
21 PAOF grant may be awarded; however, a grant is awarded at the end of a condemnation
22 proceeding. The grant is based on 75% of the final settlement / award and associated grant-eligible
23 costs under applicable provisions of [Minn. Stat. Ch. 117](#) to acquire the land and within the Agency
24 maximum for the fiscal year when the grant is awarded. The Agency must notify the Council prior to
25 filing its petition in condemnation with the district court that it is acquiring land through
26 condemnation and will be requesting a PAOF grant when the final award is determined. The
27 notification to the Council must include the Agency's authorization to file its petition and the
28 accompanying documents containing its appraisal of the land. In condemnation matters, the final
29 settlement / award and final certification should be submitted to the Council in lieu of a signed
30 purchase agreement.

31 **E. Revenue from Nonrecreational and Recreational Uses**

32 Lands acquired with regional funds are to be used for Regional Parks System purposes. On
33 occasion, during but not limited to a period prior to development, land may be used in other ways as
34 long as these temporary uses are consistent with state law, Council policy and all relevant funding
35 source restrictions (such as arbitrage rules). Allowable nonrecreational uses depend on the sources
36 of funding used for the acquisition; contact the Council for specific details.

37 All uses of this kind must be consistent with the Council-approved master plan. Revenue that
38 Agencies receive from such uses may be used in regional park lands for land stewardship or for the
39 capital costs of providing recreation opportunities; otherwise, they will be returned to the Council.
40 Any other use requires prior Council consent.

41 Revenue from recreational uses in Regional Parks System units consistent with the Council-
42 approved master plan shall be used for park purposes as determined by the Agency. Revenues
43 generated by nonrecreational uses in regional park lands, consistent with a Council-approved

1 master plan, shall be used in regional park lands either for stewardship or for the capital costs of
2 providing regional recreation opportunities, unless the Council consents to another use.

3 Agencies may be required to make an annual report of such revenues when their revenues exceed
4 an amount determined by the Council (\$2,500 per year). Unused nonrecreational revenues will be
5 returned to the Council by the end of the year succeeding the one in which they are earned.

6 **F. Unspent Funds**

7 Under the PAOF program, acquisition grants fund “up to” 75 percent of the total estimated
8 acquisition costs. Therefore, grantees may not reallocate any unspent PAOF funds.

9 **G. Required Match**

10 Agencies must fund *at least 25% of the total estimated acquisition costs as local match*, including
11 all ineligible costs and all costs over \$1.7 million per account, per year. If, during the course of an
12 acquisition, an Agency exceeds its upper limit of \$1.7 million for either or both PAOF funding
13 accounts, the Agency may need to pay more than 25% of the total acquisition costs as its local
14 match. In this case, both the 25% regular local match and the amount in excess of the regular local
15 match may be reimbursable through the same procedures for future reimbursement consideration.

16 The local match may be one or more of the following:

- 17 • Non-state funds and non-Council funds provided by the Agency.
- 18 • Reimbursement from an Agency’s future share of Regional Parks Bonding if the cash
19 contribution is financed with an Agency’s money – that is, from the Agency’s general fund or
20 other account, but not with a grant from another entity such as a watershed district or local
21 government aid provided by the state of Minnesota. Based on this rule, if the maximum
22 grant of \$1.7 million was awarded and the Agency provided a match of \$566,667, any costs
23 incurred by the Agency above the \$566,667 and paid for with Agency funds for grant-eligible
24 expenses, are also eligible for reimbursement consideration from that Agency’s share of
25 future metropolitan Regional Parks Bonding.
- 26 • The value of a land donation by the seller. The value of the donation is the difference
27 between the agreed-upon purchase price based on a certified appraised value of the
28 property and the lower amount the seller agrees to accept as payment for the land. The
29 certification of the appraised value of the property will be based on a third-party review
30 appraisal, where the third-party appraiser will perform a field review of the appraisal and
31 determine if the appraisal met the requirements of the Uniform Standards of Professional
32 Appraising Practice. Both the appraisal and the review appraisal must be submitted to the
33 Council as part of the grant request. The cost of the third-party appraisal is a grant-eligible
34 item.
- 35 • The value of the land that is obtained by a municipality under its park land dedication
36 ordinance and transferred to an Agency under a fee title or permanent easement agreement
37 at the same time that the Agency acquires additional land for that park or trail from the same
38 landowner.

39 See the Regional Parks System sub-recipient administrative guide for more detailed guidance on
40 how Agencies may provide and must document their local match. See more about future
41 reimbursement consideration on p. 13.

1 V. Regional Parks Bonding Program

2 The Regional Parks Bonding Program is intended for Regional Parks System acquisition, development,
3 and redevelopment projects.

4 A. Funding Source

5 Two primary funding sources make up the Regional Parks Bonding Program:

- 6 • The Council can issue Regional Parks bonds under authority of [Minn. Stat. § 473.325](#).
- 7 • The State of Minnesota can issue bonds appropriated for the Regional Parks System by
8 state statute or session law.

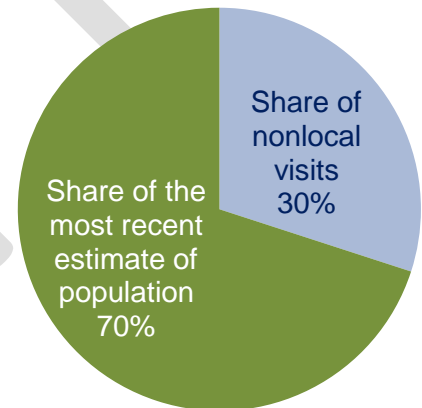
9 Per the [2040 Regional Parks Policy Plan](#) and Council’s Capital Financing Policy, the Council
10 matches every \$3 of state bonds with \$2 of regional park bonds.

11 Bonds may be taxable or non-taxable. All projects will be subject to applicable bonding rules.

12 B. Allocation

13 The Council distributes Regional Parks Bonding Program funds
14 to the Agencies according to a formula defined in the *2040*
15 *Regional Parks Policy Plan*:

- 16 • 70% based on the population within the jurisdiction of
17 each Agency compared to the region’s total population.
- 18 • 30% based on the number of visits an Agency hosted
19 from people who live outside the Agency’s jurisdiction
20 (non-local visits).



21 C. Eligible Projects and Costs

22 Development in Regional Parks System units should be based on the principle of providing and
23 maintaining quality public park areas and facilities primarily for residents of the metropolitan area.
24 The eligibility criteria (not in any priority order) for development, rehabilitation and restoration of
25 regional parks, park reserves, trails, and special recreation features are:

- 26 • Projects that provide new facilities, rehabilitate facilities, or increase capacity where there is
27 documented existing or projected high use.
- 28 • Projects continuing a phased high-priority project or one of relatively high priority that is
29 timed with other public improvement projects to achieve significant economies in cost of
30 construction.
- 31 • A project providing a specific facility that meets a documented need, is currently not
32 available, or is significantly under-represented in the system.
- 33 • Regional trails that connect to other trails or regional facilities or extend existing trails.
- 34 • Natural resource restoration, including transforming degraded lands into lands with more
35 representative native species and historic vegetation patterns. For example, this work may

entail the removal of invasive species, restoration of pastureland, or transforming industrial lands into a more diverse natural landscape.

- Acquisition of parkland parcels.
- Reimbursement for parkland parcels as described in Section F below.
- Matching non-state and non-Council funds to develop/rehabilitate recreation facilities or restore natural resource areas is encouraged.
- Projects that provide essential facility improvements and natural resource enhancements to allow for the initial public use of a regional park once there is adequate demand and acquisition base to support the development.

Consistent with authorizing state statutes and the *2040 Regional Parks Policy Plan*, all grants from the Regional Parks Bonding Program (both programs) must fund projects that:

- Are ***within the boundaries of the Regional Parks System***;
- Are consistent with the ***2040 Regional Parks Policy Plan***;
- Are consistent with a ***Council-approved master plan*** prior to the Council awarding a grant agreement;
- Do not allow private use of the acquired property as any private use can jeopardize the tax-exempt status of the bonds;
- Have been approved by their local elected boards either individually or as part of a local capital improvement plans;
- Have been reviewed by the Agency using the ***equity toolkit***; and
- Have been prioritized by the Agency in response to local capital needs.

Based on the prioritized project lists submitted by the Agencies, the Metropolitan Parks and Open Space Commission recommends a list of projects to be included as part of the Governor’s state bonding request to be submitted to the State Legislature.

Eligible costs can include land acquisition, construction, and other improvements or acquisitions of tangible fixed assets of a capital nature. Capital grants funded *entirely* with Council bonds may also be used to reimburse Agencies for acquisitions or projects under certain limited circumstances (see the section on Future Reimbursement Consideration on page 13). See the Regional Parks System sub-recipient administrative guide for more guidance on eligible and ineligible costs and activities.

D. Revenue from Nonrecreational and Recreational Uses

Lands acquired with regional funds are to be used for Regional Parks System purposes. On occasion, during but not limited to a period prior to development and receiving land proceeds, land may be used in other ways as long as these temporary uses are consistent with state law, Council policy, and all relevant funding source restrictions (such as private use rules). Allowable nonrecreational uses depend on the sources of funding used for the acquisition; contact the Council for specific details.

All uses of this kind must be consistent with the Council-approved master plan. Revenue that Agencies receive from such uses may be used in regional park lands for land stewardship or for the capital costs of providing recreation opportunities; otherwise, they will be returned to the Council. Any other use requires prior Council consent.

1 Revenue from recreational uses in Regional Parks System units consistent with the Council-
2 approved master plan shall be used for park purposes as determined by the Agency. Revenues
3 generated by nonrecreational uses in regional park lands, consistent with a Council-approved
4 master plan, shall be used in regional park lands either for stewardship or for the capital costs of
5 providing regional recreation opportunities, unless the Council consents to another use.

6 Regional park implementing agencies may be required to make an annual report of such revenues
7 when their revenues exceed an amount determined by the Council (\$2,500 per year). Unused
8 nonrecreational revenues will be returned to the Council by the end of the year succeeding the one
9 in which they are earned.

10 E. Amendments

11 Grant agreements list conditions for amendments. If there are any unspent funds from the grant
12 after the project is completed, grant agreements will list conditions for amendments.

13 To maximize the efficiency of the work of the Metropolitan Parks and Open Space Commission and
14 the Council, the Council has authorized its regional administrator or their designee to execute minor
15 amendments to Regional Parks System grant agreements. Other amendments may require Council
16 approval. See the Regional Parks System sub-recipient administrative guide for further information
17 on amendment requests.

18 F. Future Reimbursement Consideration

19 Defined the [2040 Regional Parks Policy Plan](#), Future Reimbursement Consideration (FRC) allows
20 Agencies to request Council approval to incur costs, pay those costs from Agency funds, and be
21 eligible for later reimbursement with Council bonds. Future reimbursements of local match are
22 made out of the Agency's share of a future regional bonding allocation.

23 MPOSC and the Council must individually consider and approve all requests for Future
24 Reimbursement Consideration before costs are incurred. The Council's approval of Future
25 Reimbursement Consideration does not represent or guarantee that the future reimbursement will
26 be paid; rather, the approval only allows the Council to *consider* reimbursement of the costs at a
27 later date. The Council is not obligated to provide such reimbursement. The Council must balance
28 the availability of these reimbursements against the overall need for Council bonds in a given
29 Regional Parks Bonding funding cycle. If the aggregate request for Future Reimbursement
30 Consideration exceeds the Council's ability to match at the prescribed level, the Council may
31 decline any Future Reimbursement Consideration request.

32 If the Council approves a request, the Council's Treasury Division will complete a reimbursement
33 declaration to be signed by the Chief Financial Officer. This will allow for reimbursement with bond
34 proceeds under the tax-exempt bonding rules.

35 Agencies can request Future Reimbursement Consideration to reimburse their costs for:

- 36 • Portions of an Agency's local match to a PAOF grant, if the Agency specifically requests that
37 the Council consider future reimbursement of the local match amount as part of its PAOF
38 grant application;
- 39 • Reimbursement for acquisition of land not designated in the *Regional Parks Policy Plan* at
40 the time of purchase but subsequently added to the system through a plan amendment;

- 1 • Reimbursement of design costs for large or complex recreation facilities in Regional Parks
2 Requests for Future Reimbursement Consideration for **land acquisition**, in addition to meeting all
3 requirements for PAOF listed above, must be submitted in writing to the Council and receive
4 Council approval *before* the Agency acquires the property in fee simple or acquires an option to
5 purchase. Requests for Future Reimbursement Consideration for **construction or development**
6 **projects** (including design costs), in addition to meeting all requirements for the Regional Parks
7 Bonding Program listed above, must be approved by the Council *before* the preparation of
8 construction documents for a project. See the Regional Parks System sub-recipient administrative
9 guide for procedures and more detailed guidance on eligible and ineligible costs and activities.



390 Robert Street North
Saint Paul, MN 55101-1805

651.602.1000
TTY 651.291.0904
public.info@metc.state.mn.us
metro council.org

Follow us on:
twitter.com/metcouncilnews
facebook.com/MetropolitanCouncil
youtube.com/MetropolitanCouncil