

# Regional Park System Bonding Program FY2023 Projects and Equity Highlights

Regional Park Implementing Agency Presentations Part One: Three Rivers Park District,  
Ramsey County, City of Saint Paul, Anoka County, and Washington County

Metropolitan Parks and Open Space Commission Meeting

December 2, 2021



# Purpose of today's presentation

- Present the fiscal year 2023 proposed bonding projects for the Regional Parks System
- 5 Agencies will present their list of projects today and highlight a project designed to advance equitable use of the Regional Park System
  - Three Rivers Park District
  - Ramsey County
  - City of Saint Paul
  - Anoka County
  - Washington County
- The remaining 5 Agencies will present their projects at the January 6 MPOSC meeting

# Regional Parks System Bonding Program

- The Bonding Program supports capital projects for the Regional Parks System (development, acquisition, and restoration)
- The Council has requested \$15 million for the FY2023 Bonding Program
- The Council matches every \$3 of state bonds with \$2 of regional park bonds
- \$15 million will be matched with \$10 million in Council funds
- Funds are allocated to the Regional Park Implementing Agencies based on a formula driven by population (70%) and non-local park use (30%)

# Agency project lists

- The Agencies submit a list of potential projects in preparation for the upcoming legislative session
- These projects are subject to change due to final funding allocations and appropriation language that authorizes the Agency boards to select projects
- As part of today's presentation, Agencies were asked to identify which projects are designed to advance equitable use of the Regional Park System
- Agency staff will now present their projects

Three Rivers Park District - FY2023 Bonding Projects Total Estimated Allocation: \$5,395,702		Equity Focus Area
Baker Park Reserve Picnic Area and Fishing Pier trail reconstruction	Reconstructed south picnic area trail to the fishing pier at Baker Park Reserve	Ability/Race
Hyland Park Reserve Boat Ramp Access Road and ADA Improvements	Boat ramp access road and ADA improvements at Hyland Park Reserve	Ability
Luce Line Regional Trail Boardwalk Redecking South of Medicine Lake	Renovated boardwalks south of Medicine Lake on the Luce Line Regional Trail	None
Elm Creek Park Reserve Trail Bridge Replacements	Replace two end-of-life trail bridges at Elm Creek Park Reserve	None
Elm Creek Park Reserve Road and Parking Lot Reconstruction	Reconstructed roads and parking lots at Elm Creek Park Reserve	ALL
Lake Rebecca Park Reserve Restroom and Picnic Shelter	Improved restroom and picnic shelter at Lake Rebecca Park Reserve	ALL
Three Rivers Park District Trail Pavement Management Implementation at Regional Parks and Trails	47 miles of trails rehabilitated at Lake Rebecca Park Reserve, Luce Line Regional Trail, Nine Mile Creek Regional Trail, Crystal Lake Regional Trail, Elm Creek Park Reserve, Rush Creek Regional Trail, and West Mississippi River Regional Trail	None

# Three Rivers approach to funding equity projects

Three Rivers' 2022-2026 CIP identifies 110 projects totaling \$102 million.

- ✓ State Bonding for the Regional Park System is assumed at the historic \$5 million level. Two bonding cycles would fund about \$2.16 million of Three Rivers' projects over the 5 years.
- ✓ Met Council funding is a 2/3<sup>rd</sup>s match. It would fund \$1.44 million over five years.

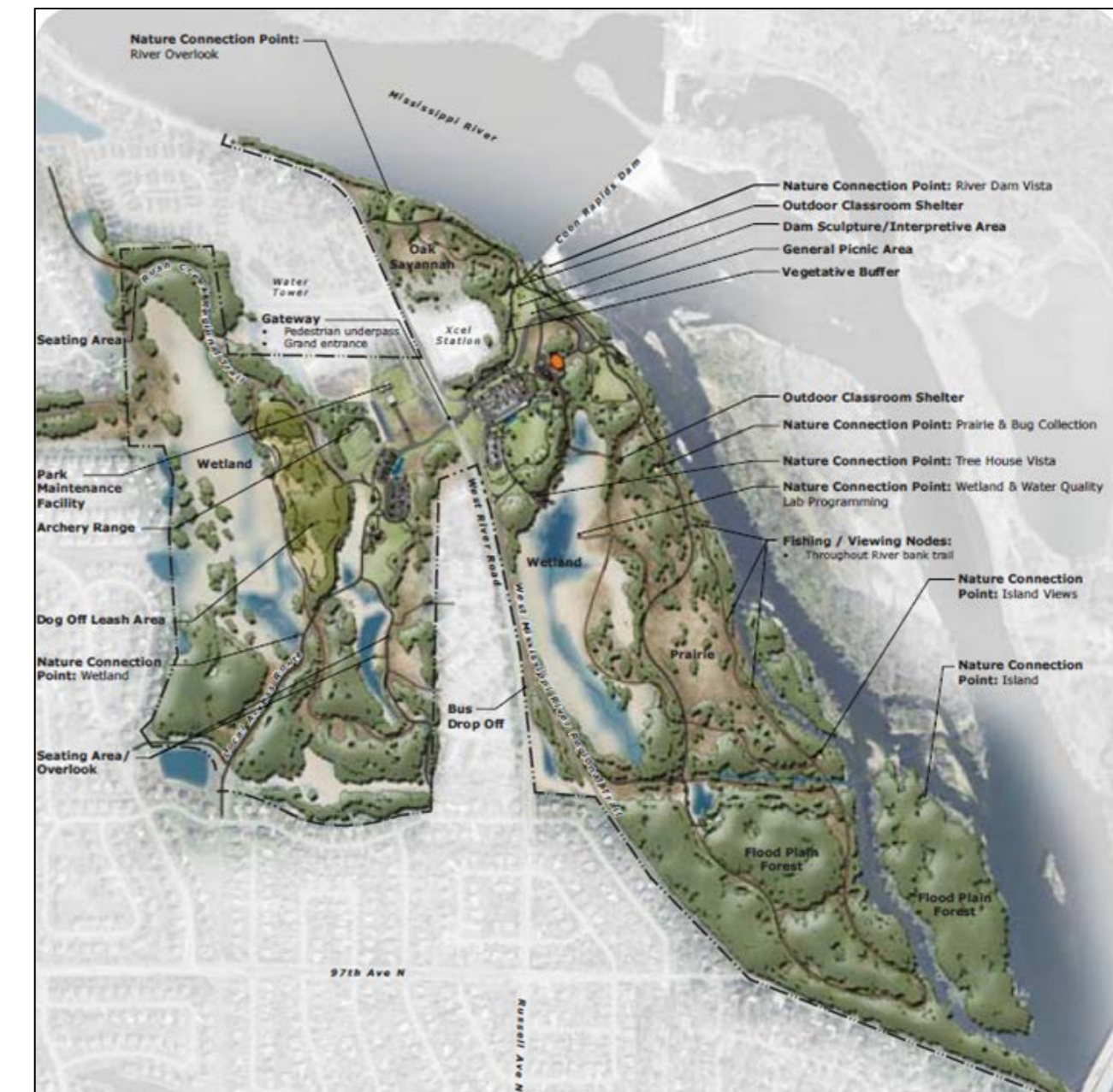
Three Rivers' P2P equity investments are not yet recognized as part of the regional system. Funding for those projects is from Three Rivers.

In-system equity projects (e.g., Mississippi Gateway) are typically funded through Legacy grants, direct State grants and Three Rivers.

General State bonding timing is inconsistent and is assigned to projects without partners such as pavement rehab.

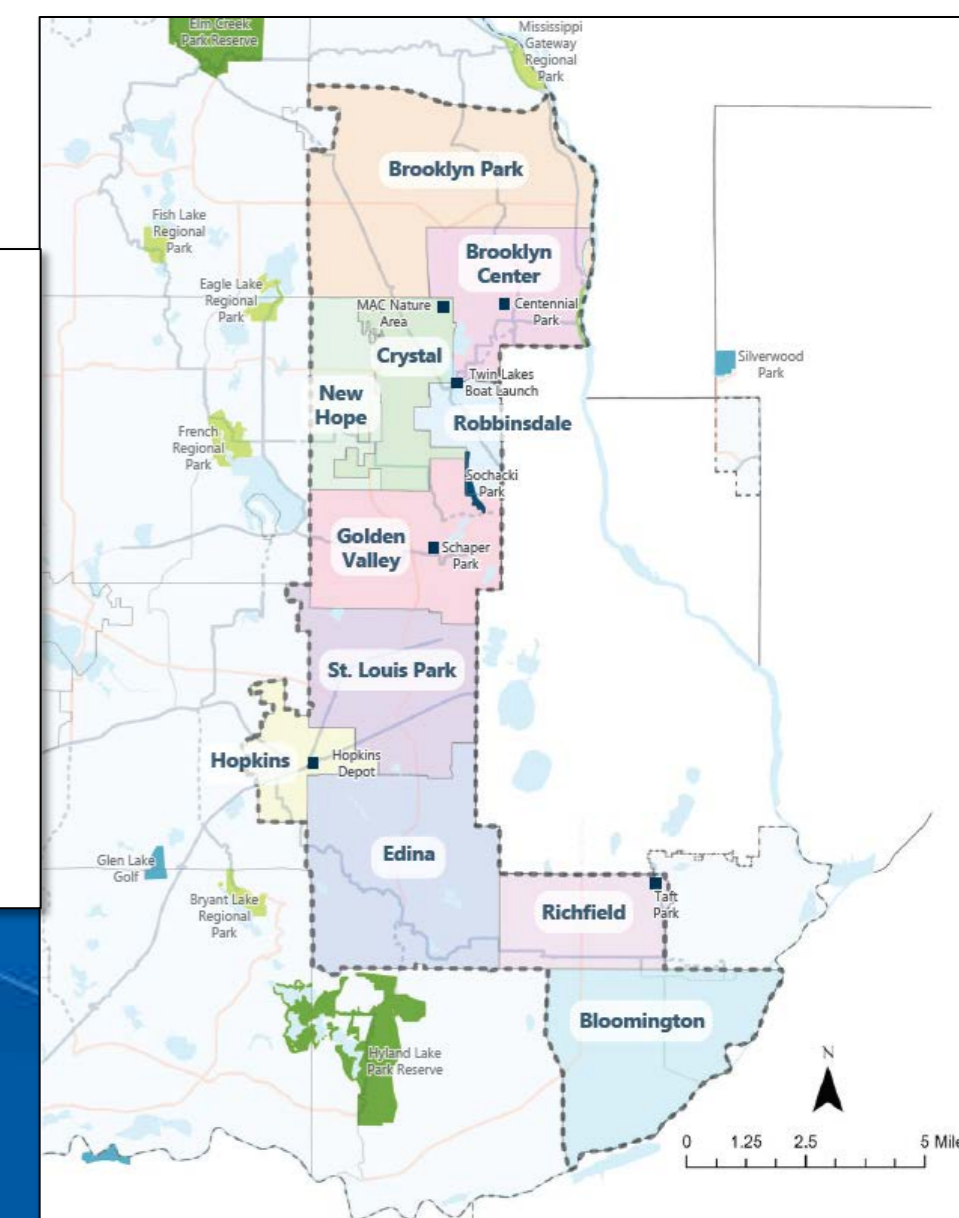
## Notable Equity-driven Projects in the CIP

### Mississippi Gateway: A \$30 million investment



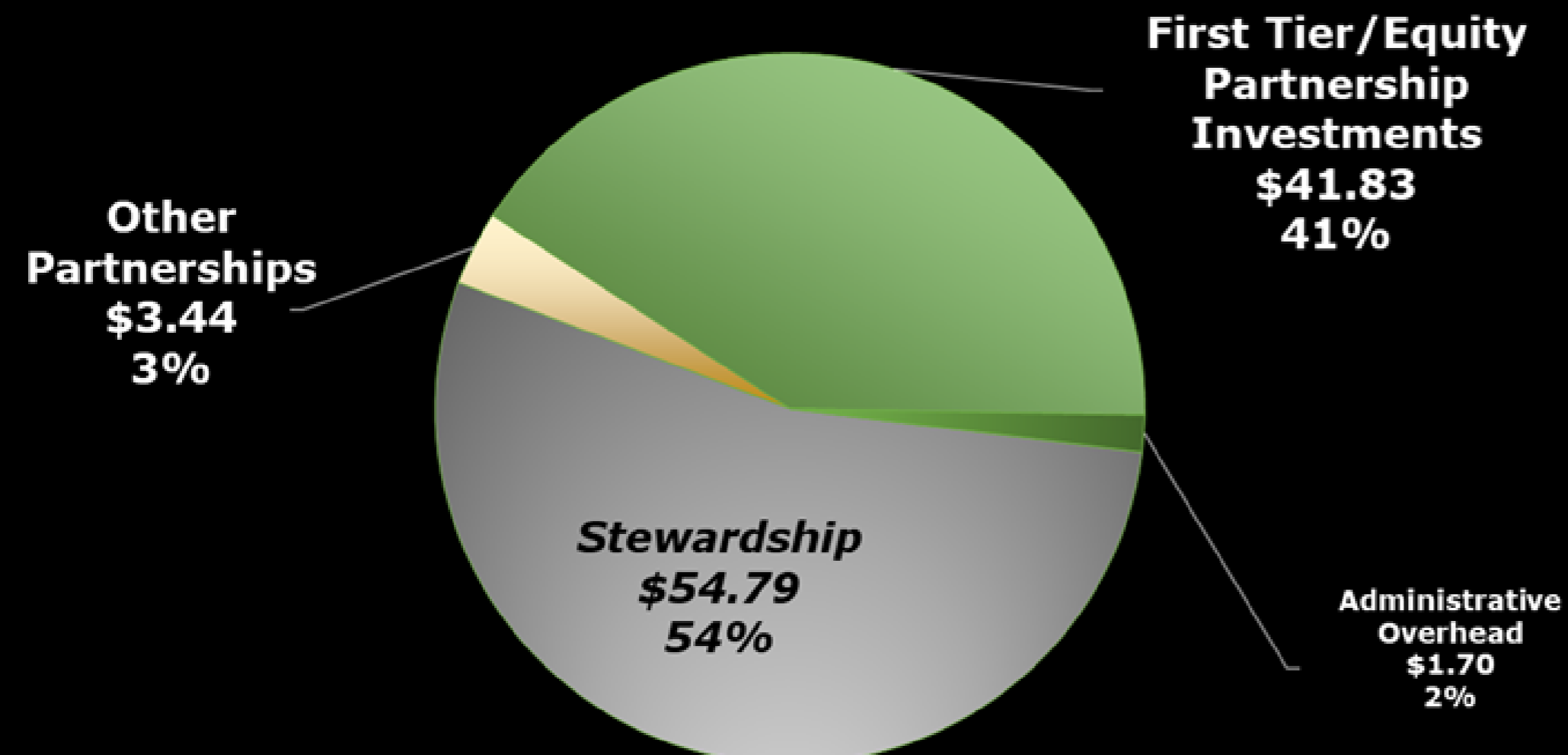
### P2P: Parks to People Initiative (First-tier bridging facilities)

- Sochacki \$1.7M
- Crystal MAC Wildlife Area: \$1.5 M
- BC Downtown environmental park: \$0.5M
- P2P Master Plan projects: TBD: \$3.25 M



### Summary of Investments: 2022 - 2026

(\$ Millions)



**Ramsey County Parks FY2023 Bonding Projects**  
**Total Estimated Allocation: \$ 2,222,952**

**Equity Focus Area**

**Battle Creek Regional Park Infrastructure Improvements:** Reconstruct trails, parking lots, stormwater infrastructure, and make accessibility improvements at Battle Creek Regional Park

Ability

**Long Lake Regional Park Infrastructure Improvements:** Reconstruct trails, parking lots, stormwater infrastructure, and make accessibility improvements at Long Lake Regional Park

Ability



# Battle Creek Regional Park Needs - Ramsey

- Increase accessibility and access for people of all abilities to recreational amenities
- Improve walking & driving surfaces within the park
- Improve ped ramps and accessible route's paved surfaces
- Lots and trails for heavily used amenities, like water park, picnic pavilions, and trailheads





**City of Saint Paul FY2023 Bonding Projects**  
**Total Estimated Allocation: \$3,009,410**

**Equity Focus Area**

**Samuel Morgan Regional Trail Segments 1 and 4 Reconstruction (\$2,659,410):**  
 Reconstruct oldest segments of trail, 3.5 miles; over 500,000 users per year,  
 matches \$4.96 million in federal transportation funds

N/A

**Harriet Island Riverwalk Design (\$350,000):** Design and engagement to replace  
 and reimagine the dilapidated riverwalk at Harriet Island

N/A



# Bonding Project Equity Highlight – Saint Paul

- Most of funds are providing required federal funding match
- Regional Trail Reconstruction supports Lower Landing Master Plan
  - Connection to river for downtown Somali community, proximity to regional transit
  - Regional trail is spine of park
  - Connection to active uses (futsal, pump track, outdoor fitness)
  - Connection to natural uses (nature trail, wetland restoration)
- Coordinates with Lexington Pkwy extension (better access for Montreal Hi-Rise)

**Anoka County FY2023 Bonding Projects**  
**Total Estimated Allocation: \$2,471,915**

	<b>Equity Focus Area</b>
<p><b>Riverfront Regional Park Maintenance Facility:</b> Design, engineering and construction of new maintenance facility, include site and yard work for equipment and storage. Outcome: 3500+ SF Maint. Facility, 10,000+ SF yard.</p>	Ability
<p><b>Rum River Regional Trail – Bridge Street Underpass:</b> Design, engineering and construction of trail underpass. Outcome: 300+ LF Trail/Underpass</p>	Ability and Age
<p><b>Bunker Hills Regional Park – Boardwalk Reconstruction:</b> Design, engineering and reconstruction of boardwalk. Outcome: 1000+ LF Boardwalk</p>	Ability
<p><b>Bunker Hills Regional Park – Maintenance Facility:</b> Design and engineering of Maintenance facility remodel (1<sup>st</sup> funding phase). Outcome: Remodel Construction Plan set.</p>	N/A



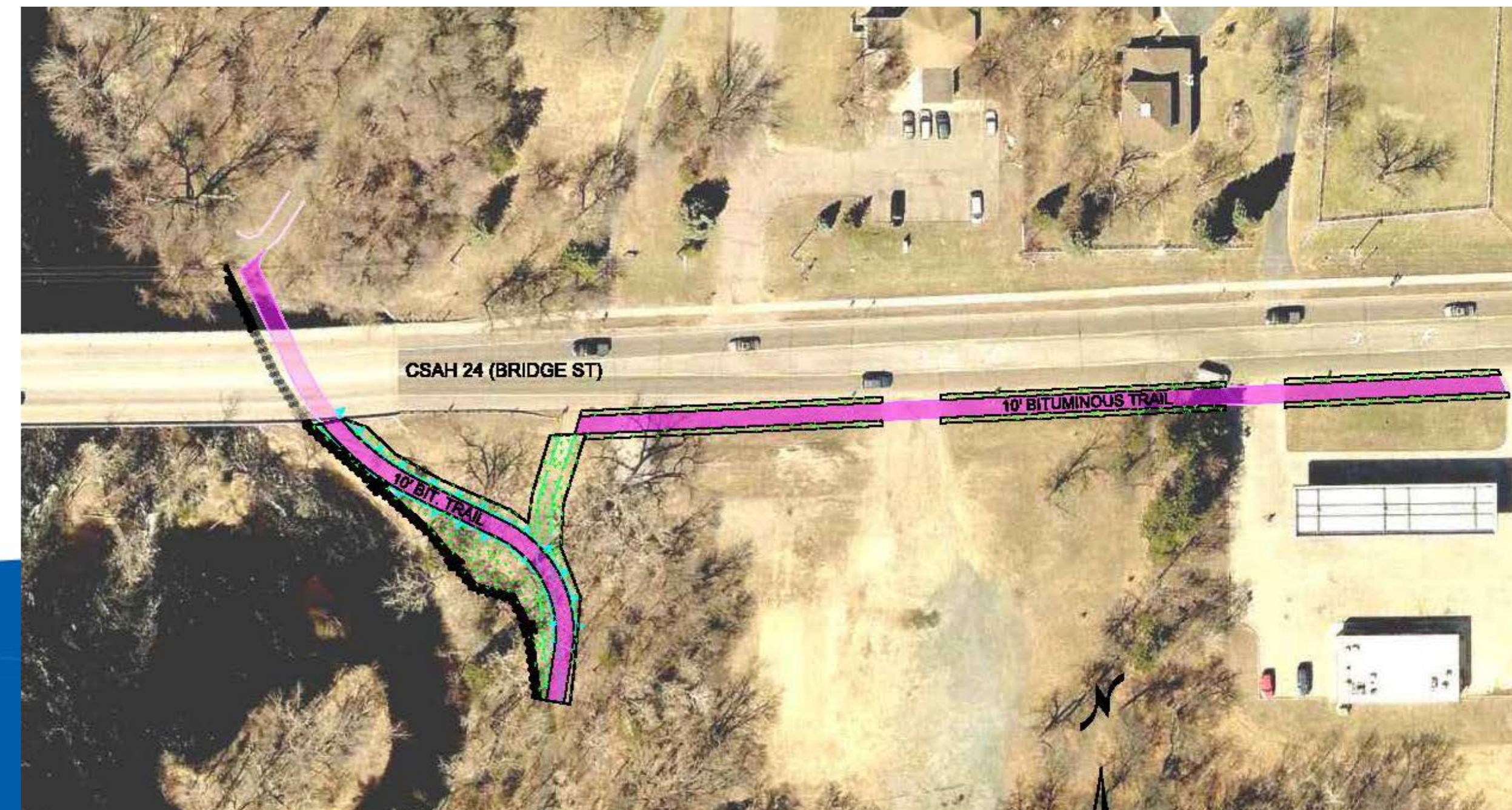
# Rum River Regional Trail – Bridge Street Underpass – Anoka

Parks, libraries and schools create community. It is important to safely connect these spaces to build a stronger community.

To better serve communities of:

- Age (seniors, children/students, mothers with small children/strollers)
- Ability (ambulatory)

Community engagement showed the need and desire for a safe crossing for the trail at Bridge Street. Without community engagement, this project would not be occurring when it is.



**Washington County FY2023 Bonding Projects**  
**Total Estimated Allocation: \$1,605,339**

	<b>Equity Focus Area</b>
<p><b>Lake Elmo Park Reserve Swim Pond Filtration Improvements:</b>                      New swim pond filtration system and access improvements at Lake Elmo Park Reserve</p>	Age (youth)
<p><b>Big Marine Park Reserve Facility Safety Improvements:</b>                      Improved staff facility restrooms and water services at Big Marine Park Reserve</p>	Ability
<p><b>Lake Elmo Park Reserve Swim Pond Play Area:</b>                      Reconstructed play area near the swim pond at Lake Elmo Park Reserve</p>	Ability Age (youth)



# Lake Elmo Park Reserve Swim Pond Play Area - Washington



- Current structure has exceeded design life
- ADA accessibility improvements
- Creative, custom design



# Questions, Comments, and Discussion

Jessica Lee, Senior Parks Planner  
[jessica.lee@metc.state.mn.us](mailto:jessica.lee@metc.state.mn.us)

Community Development Division

