

Business Item 2021-297

Spring Lake Park Reserve Master Plan

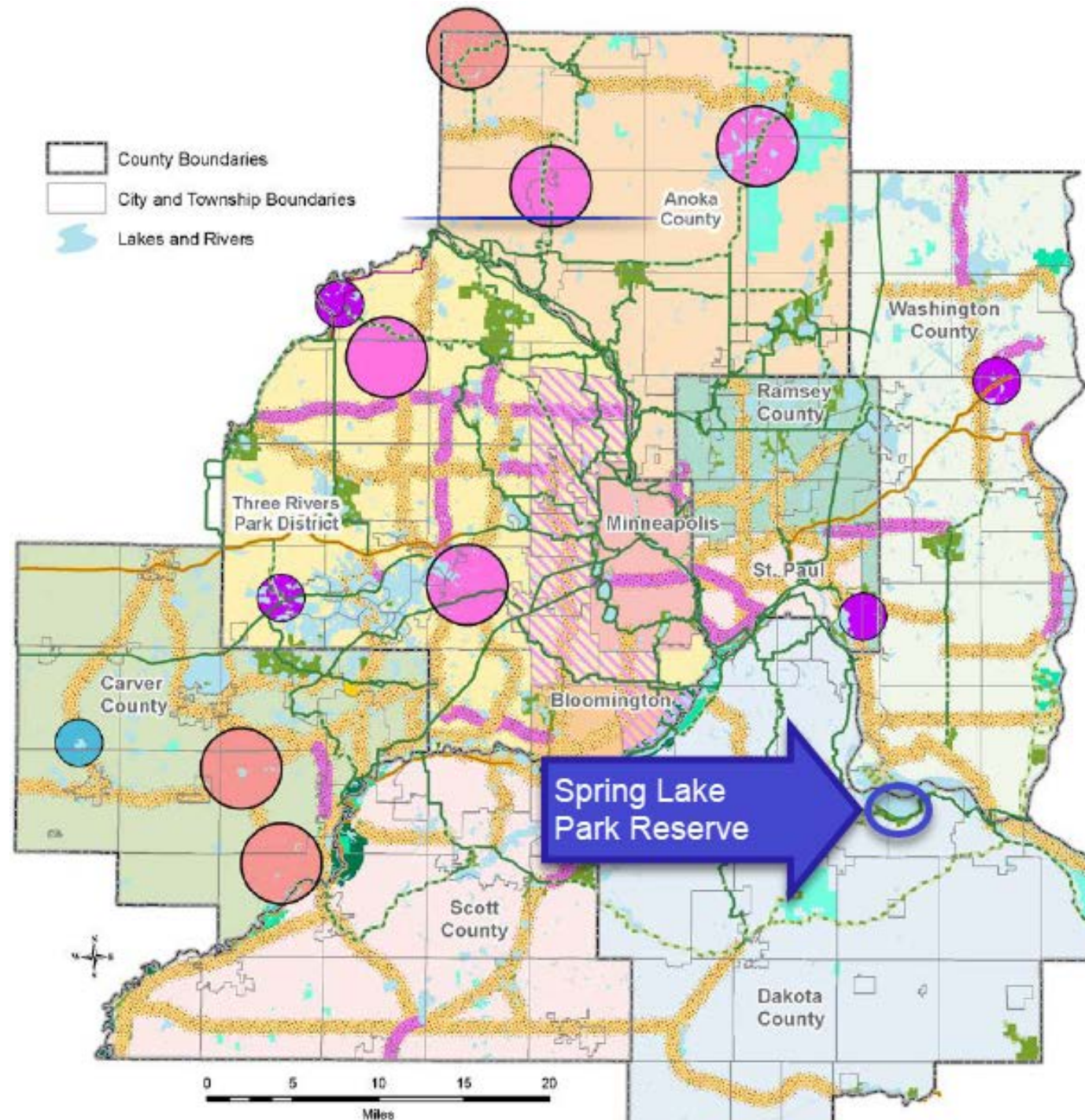
Dakota County

November 4, 2021

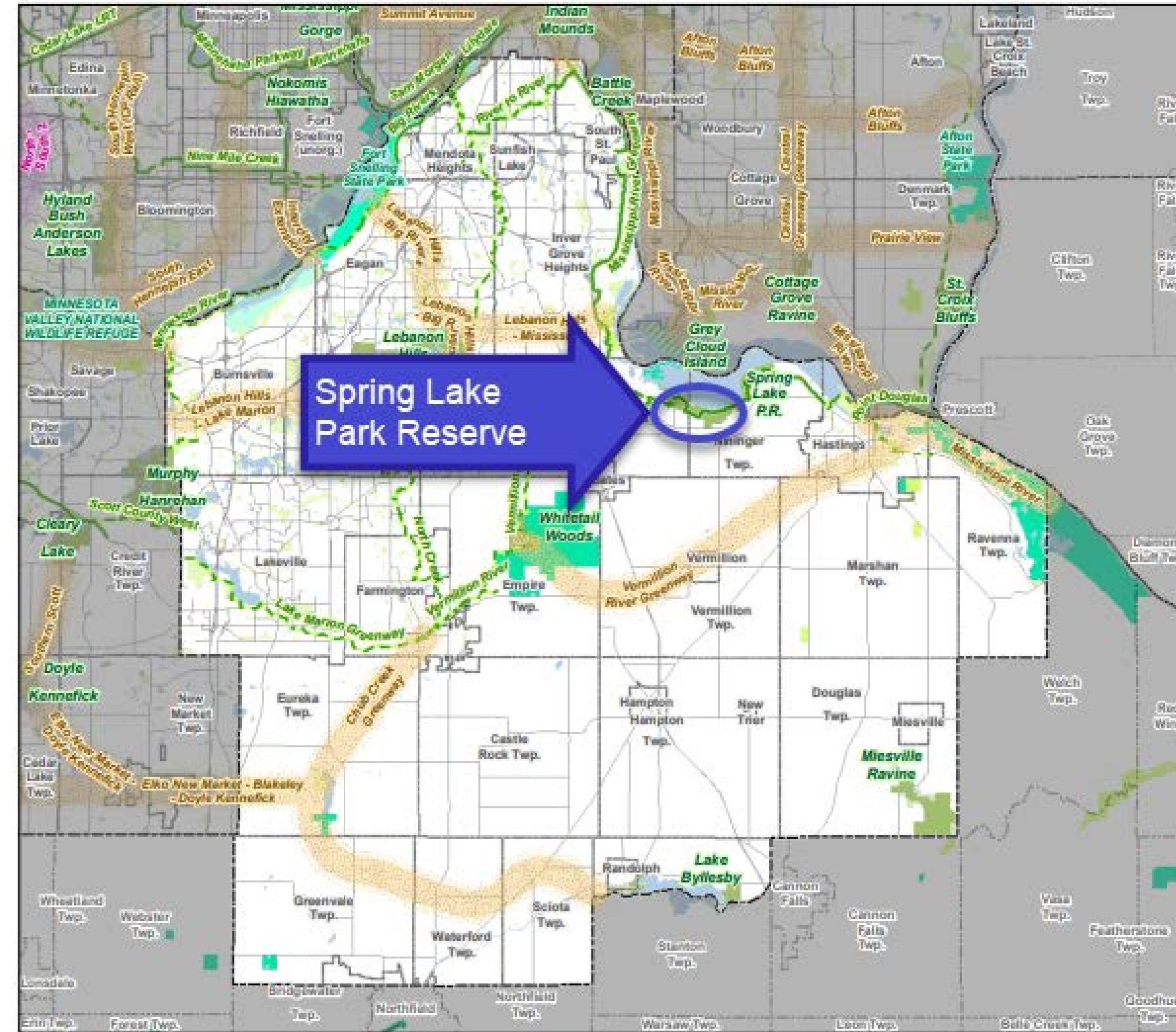
Metropolitan Parks and Open Space Commission



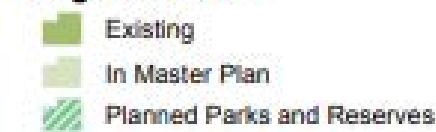
Spring Lake Park Reserve



Master Plan Boundary Adjustments and Search Areas



Regional Parks



Regional Trails



Regional Park Search Areas and Regional Trail Search Corridors



Public and Partner Engagement



2019 Kick Off Tour



2019 Planning Commission Tour



2019 THPO Site Walk



2019 THPO Site Walk

Additional engagement

Indigenous people, Hispanic/Latinx people, people living with disabilities, people with low incomes, youth, and older adults

Public engagement methods

Interactive outreach, community events and meetings, social media & online meetings

Advice themes

- Bison reintroduction
- Nature-based recreation
- Wayfinding
- Sustainable design principals
- Concern for over-development

Equity Analysis

Project Data

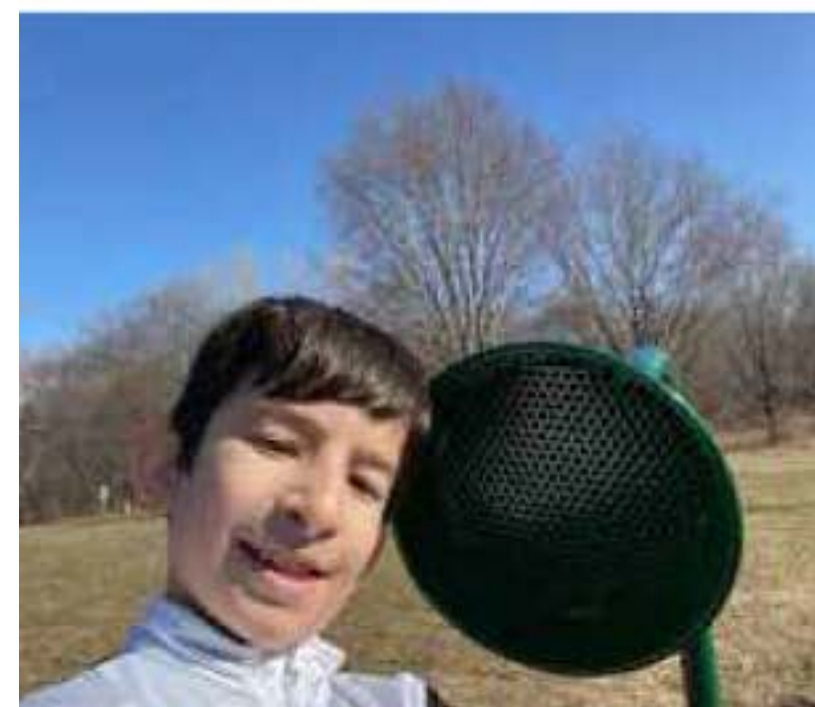
- Specific populations comprise a smaller share of park visitors
- Current barriers are known
- History affects visitorship

Public Engagement

- Additional engagement methods provided specific partner and community advice

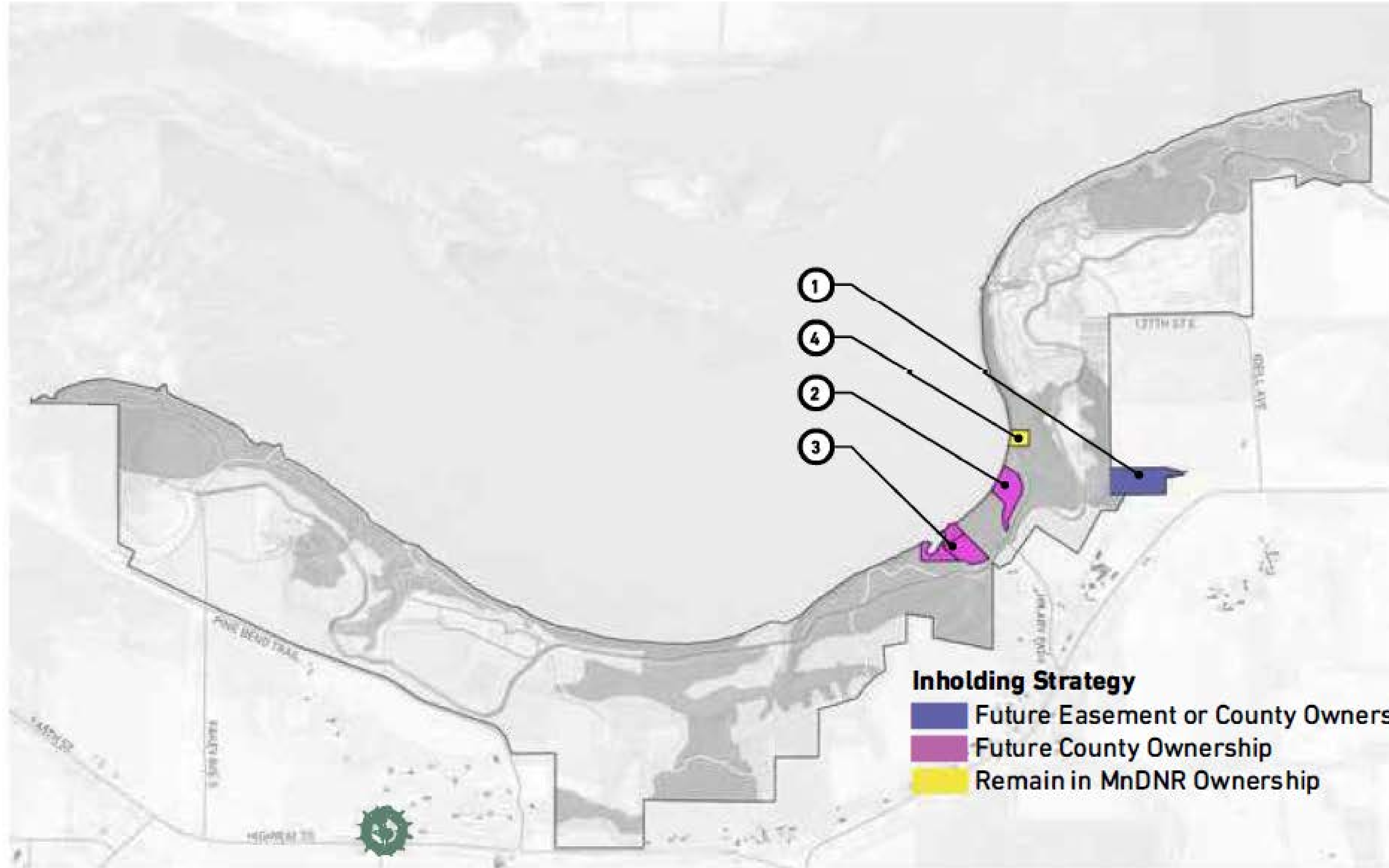
Evaluation

- The public engagement process shaped the plan.
- Dakota County is working on an inclusive marketing plan



Images from the Goosechase, online engagement tool. The images are a response to the question "Take a selfie using your favorite feature in the playground."

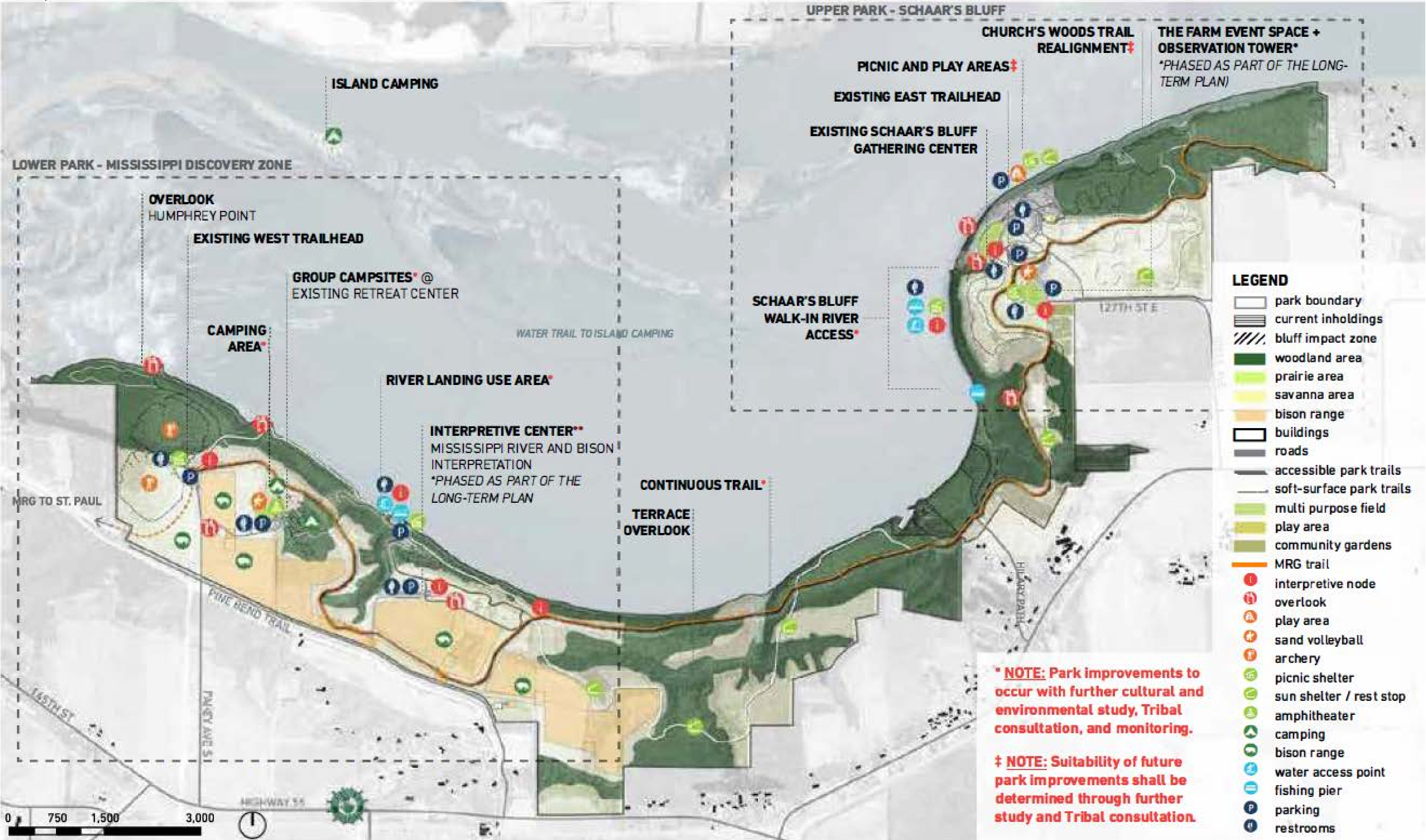
Boundaries and Acquisitions



Boundary
1,128 acres

- Acquisitions**
- 3 inholdings
 - 1 DNR access

Development Concept



Site-wide Concept Plan, Long-Term Development Plan

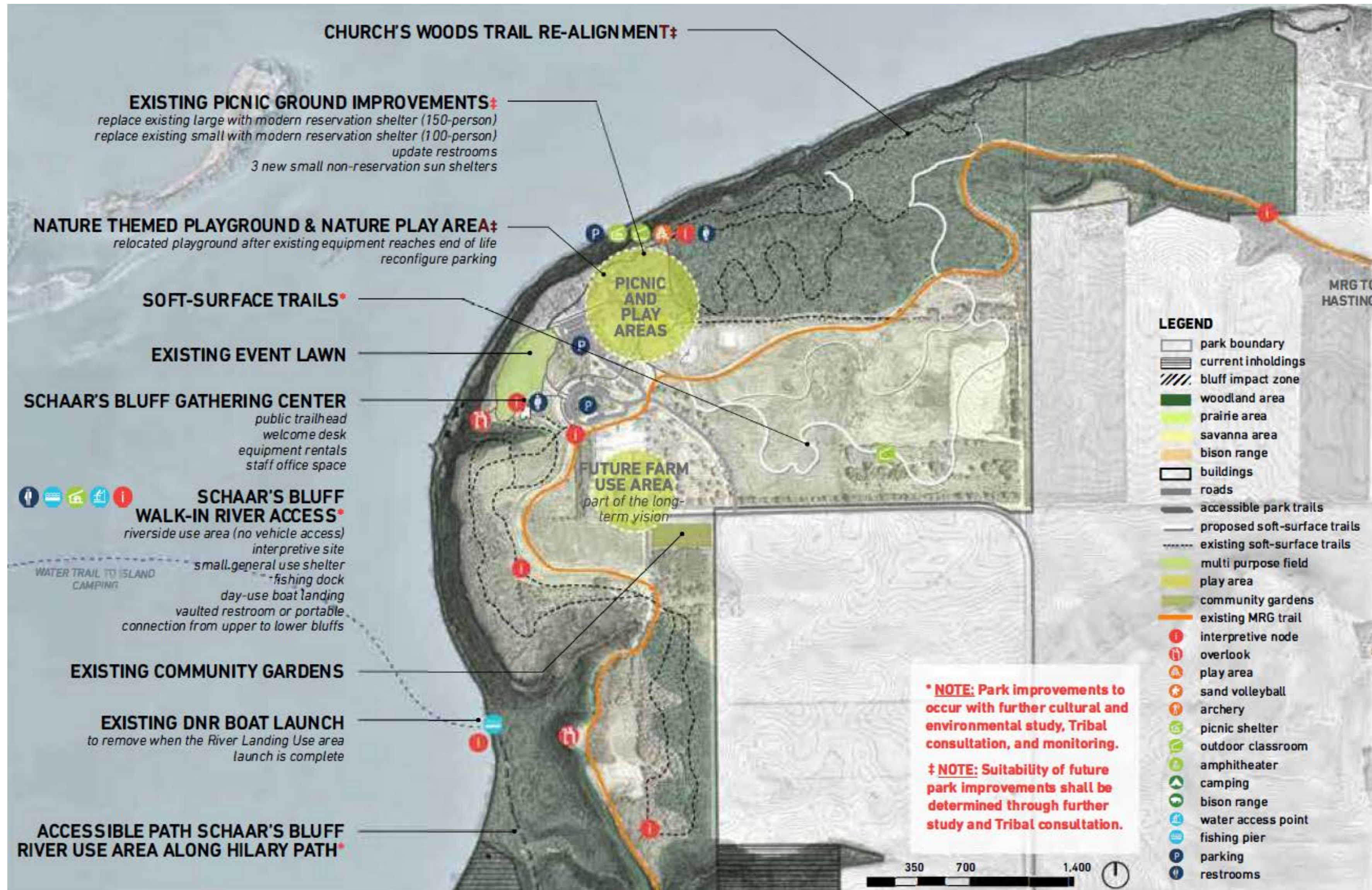
Recreation & natural resource improvements

- River use areas
- Bison

Programming, and partner coordination

- Natural Resources
- Cultural Properties

Upper Spring Lake Park Reserve: Schaar's Bluff

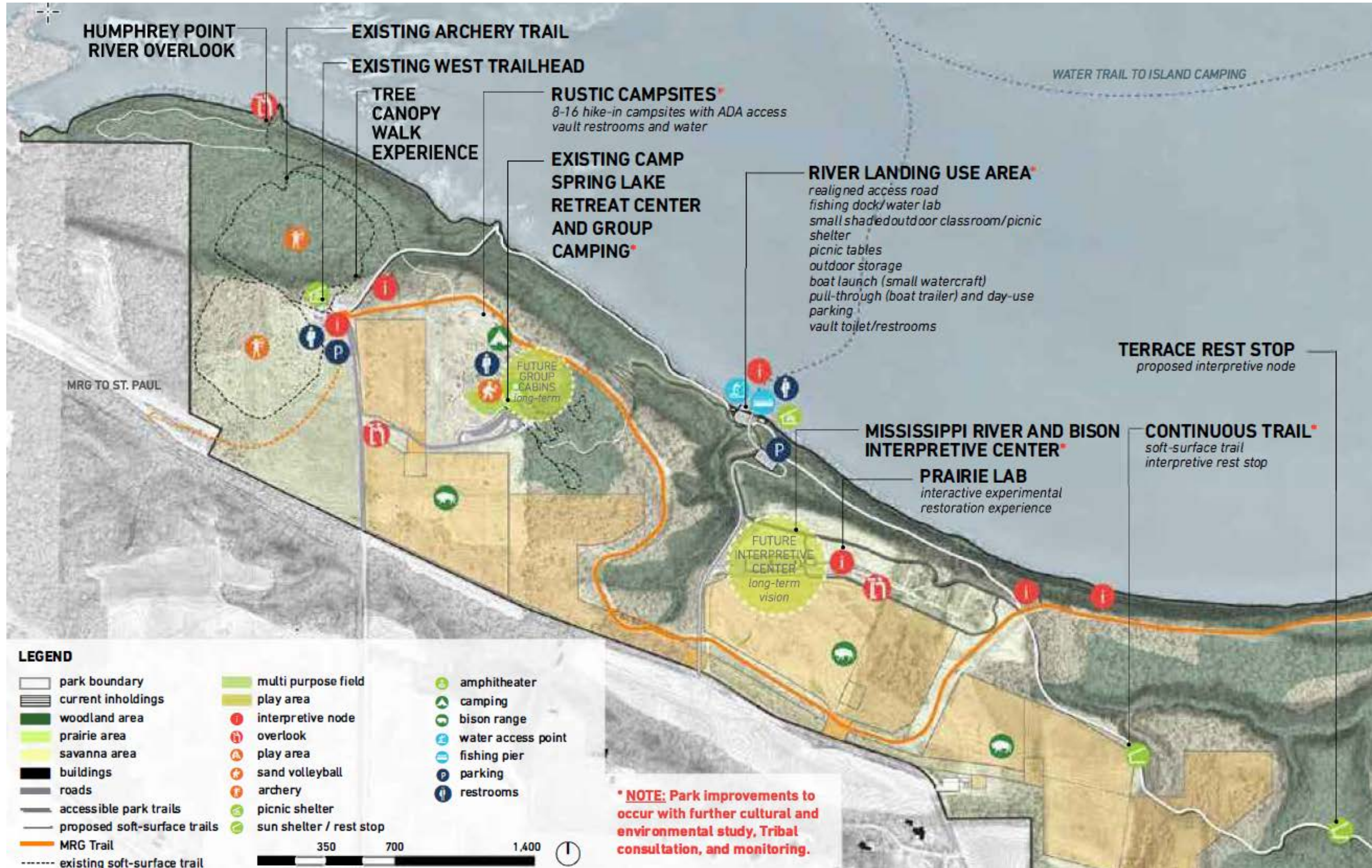


River Use Area



Farm Area

Lower Spring Lake Park Reserve

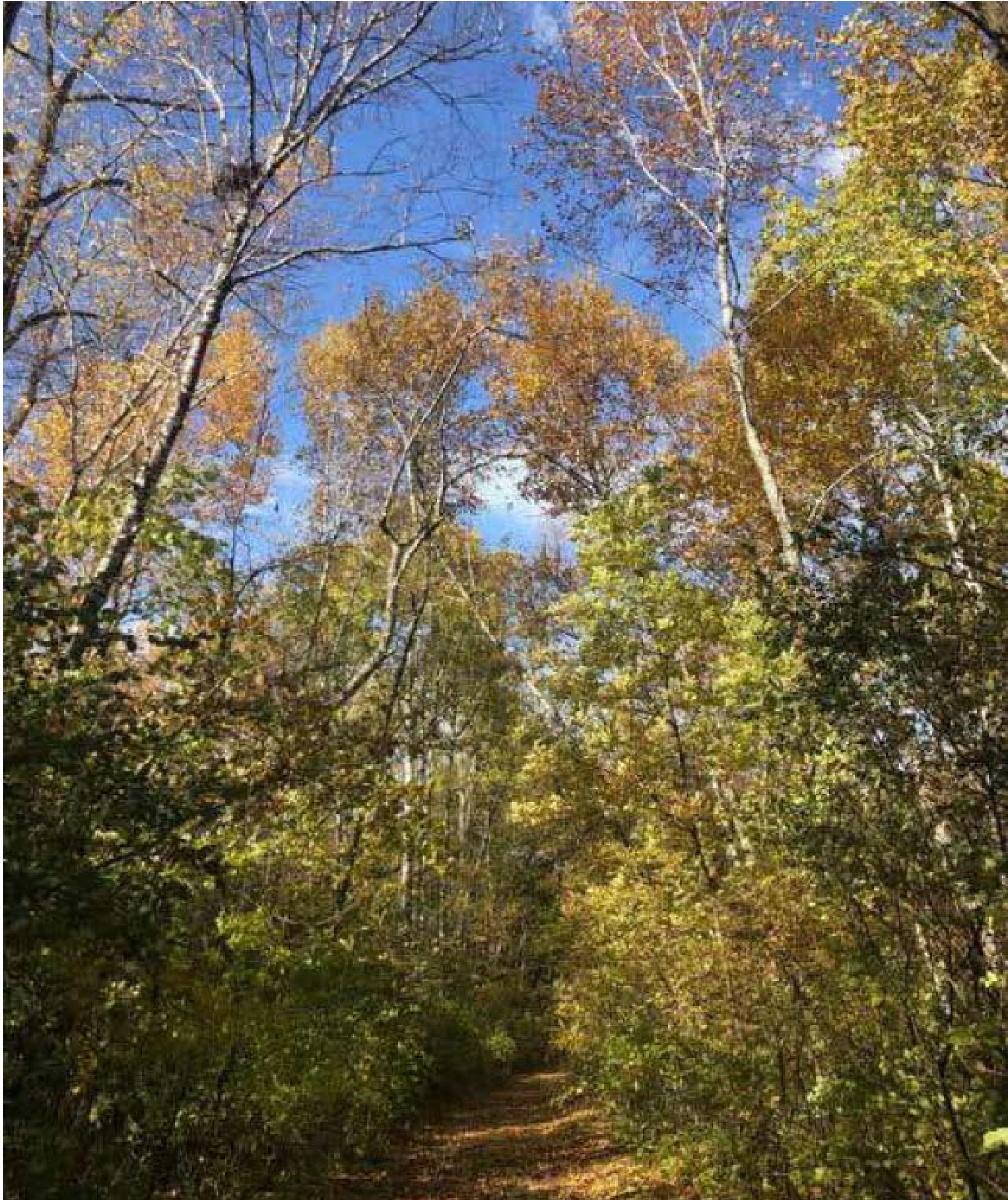


Bison



The Landing

Estimated Project Costs



- The total estimated cost to implement the master plan is \$26,096,000.
- The estimated cost to operate the park for 10-years is an additional \$349,683.

Rationale for Proposed Action

The Spring Lake Park Reserve Master Plan is consistent with the requirements of the:

- *2040 Regional Parks Policy Plan*
 - Planning Strategy 1
- Other Council policies and systems

Images from the Goosechase, online engagement tool. The images are a response to the question "One of great features of this park is its proximity to the Mississippi. While on the west side of the park, follow the signs that say 'Trail to River.' Take a photo of this view."



Proposed Action



Archery participants at the Park Reserve.

That the Metropolitan Council:

1. Approve the Spring Lake Park Reserve Master Plan.

Thank you

Tracey Kinney, Senior Planner
Community Development Division
Tracey.kinney@metc.state.mn.us
651-602-1029

