

# Transformation of Indian Mounds Regional Park



SAINT PAUL  
MINNESOTA

STPAUL.GOV



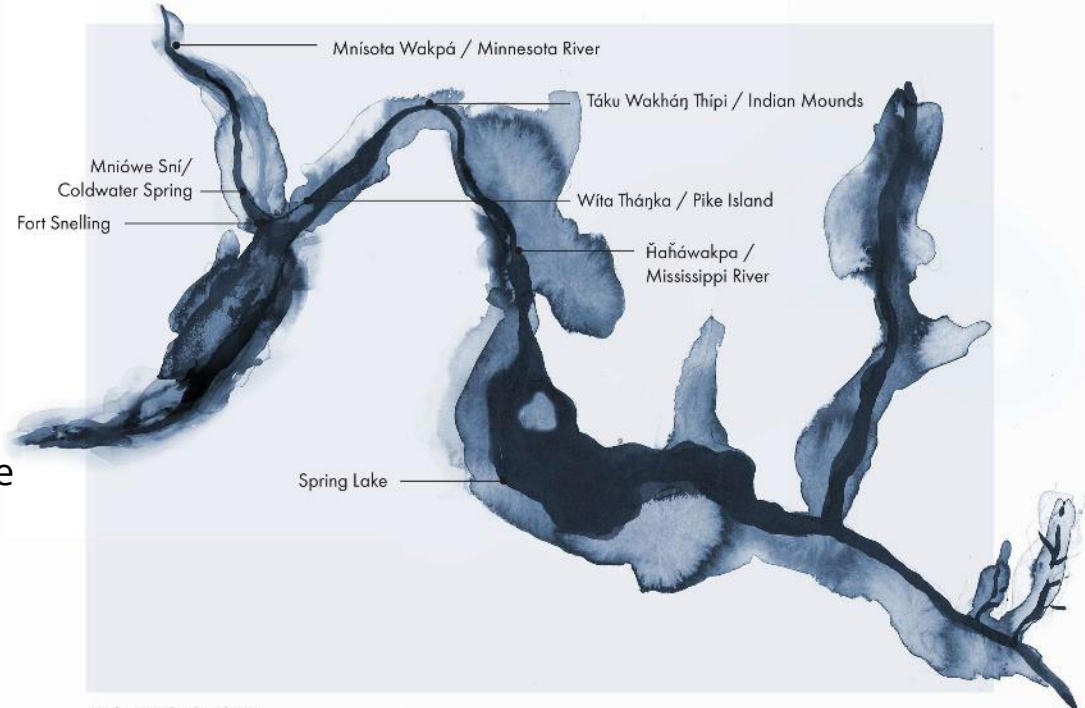
# Overview

We are on Dakota Land

The Bdote is the center of the creation story for the Dakota

Like this watercolor, there are not hard lines that delineate where sacred land starts and stops

As such, there is much land that we are responsible for which we need to recognize as sacred



Unbounded Bdóte



## The “tripping point”



Opponents of the Dakota Access Pipeline in October 2016. Photo by [Rob Wilson](#) [GoFundMe]



# Cultural Landscape Study + Messaging Plan

## Funded by the Parks and Trails Legacy Fund

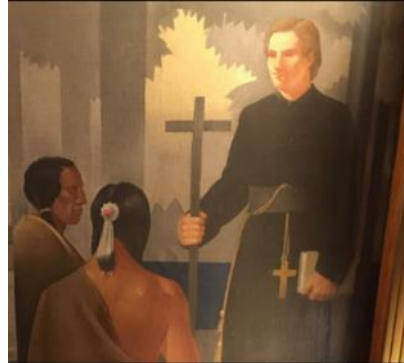
- Include Indigenous communities in decision making about site management and appropriateness of amenities.
- Establish ongoing relationship with Indigenous representatives
- Educate ourselves and public and visitors on the importance of this place and respect





# Challenges

- Pervasiveness of colonialism as our lens
- Longstanding mistrust
- Staff/resources for Tribal Nations
- Staff/resources in City
- Project funding versus need for ongoing relationship development and process
- Method for working together





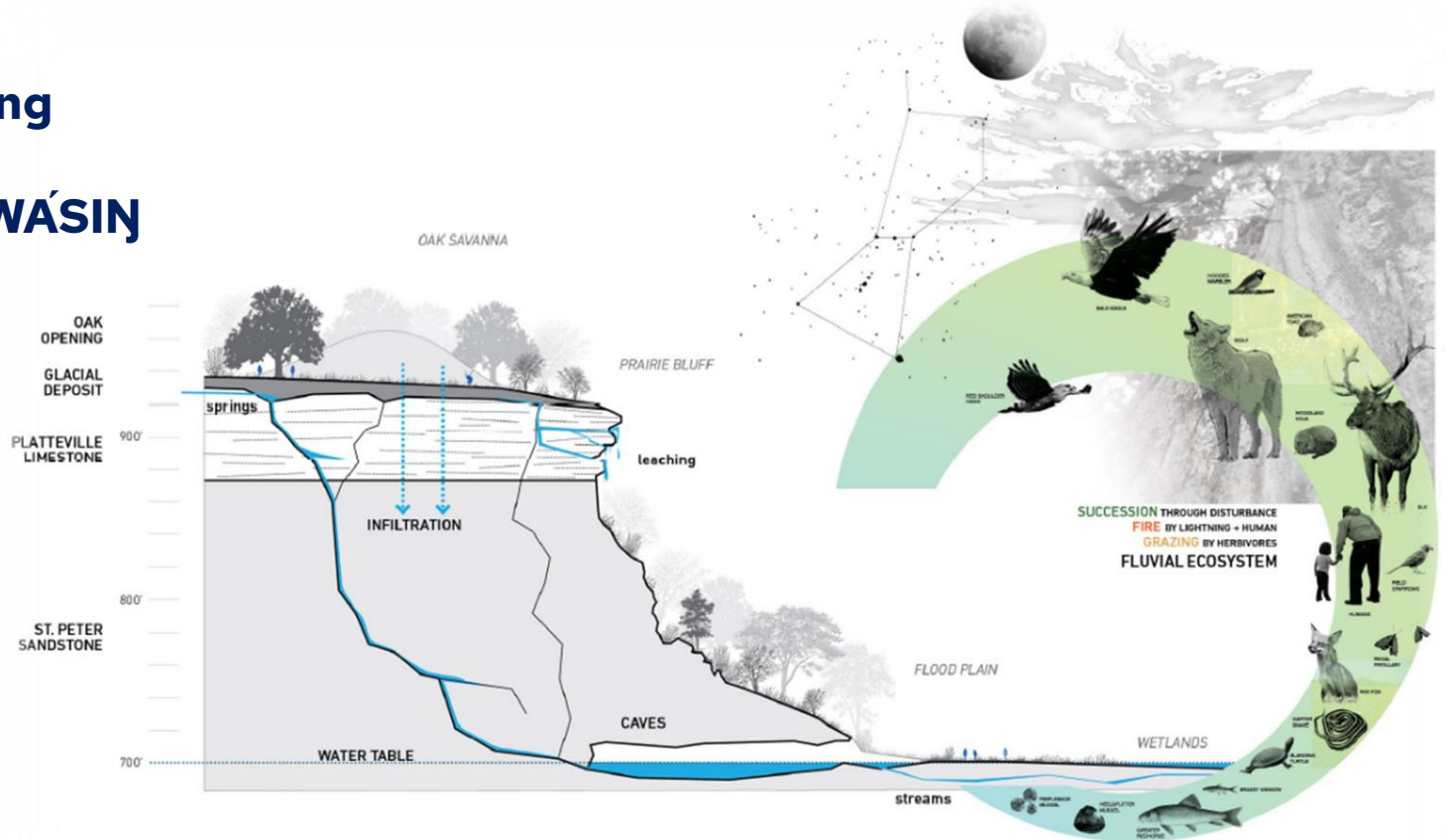
## Shift in thinking

# MITÁKUYE OWÁSIN

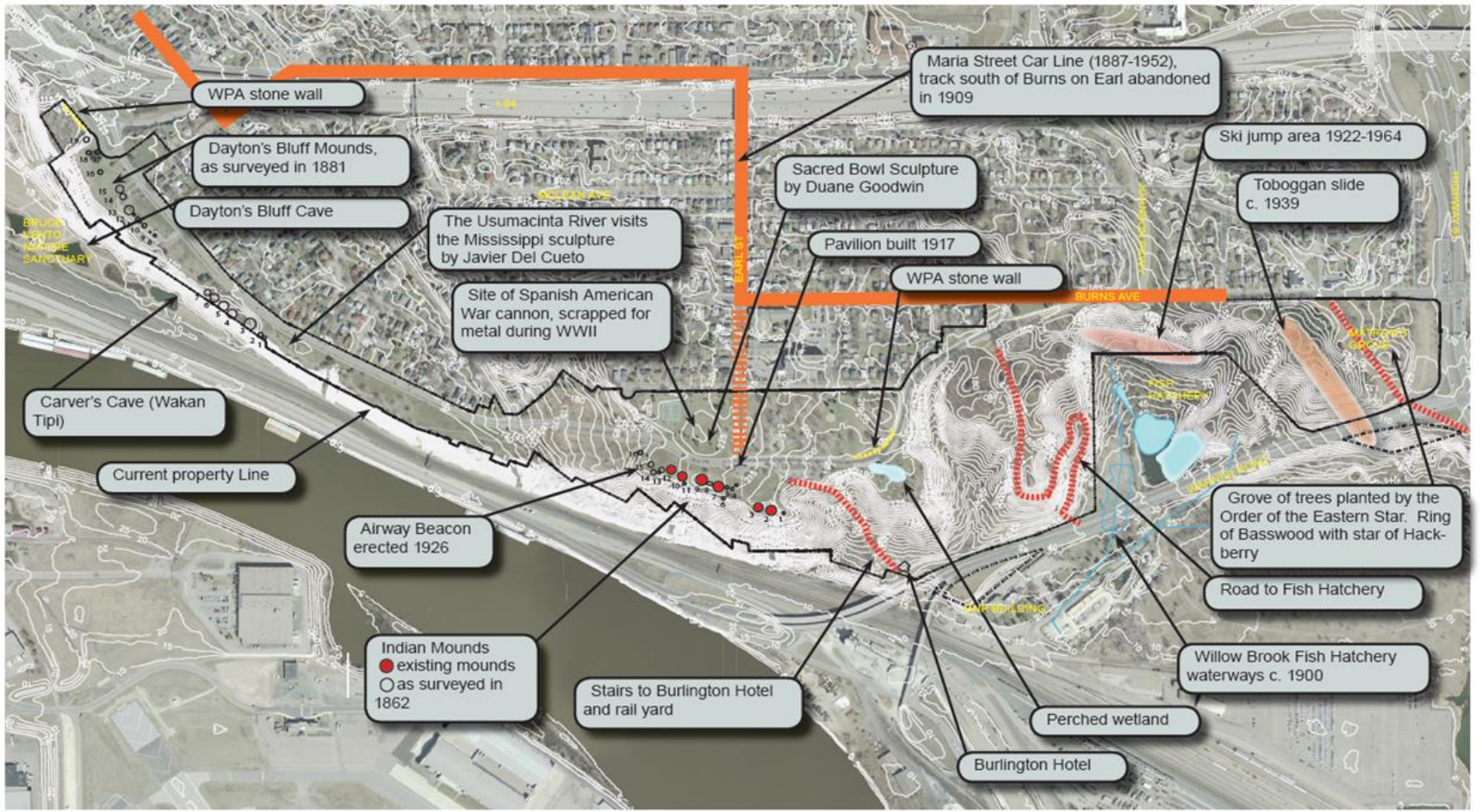
Everything is related.

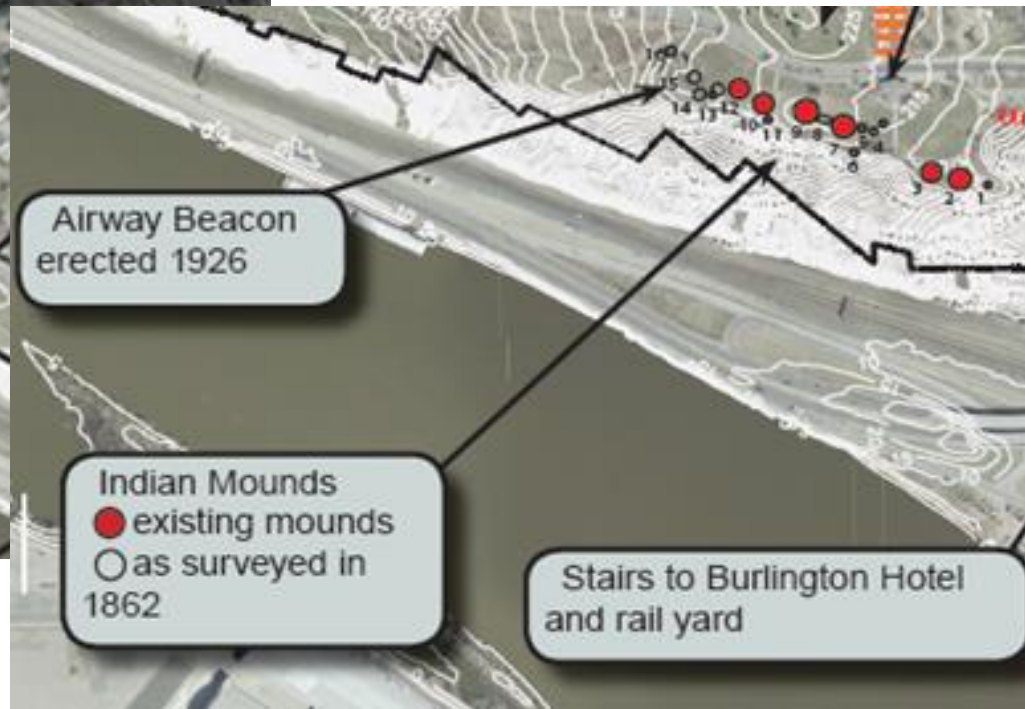
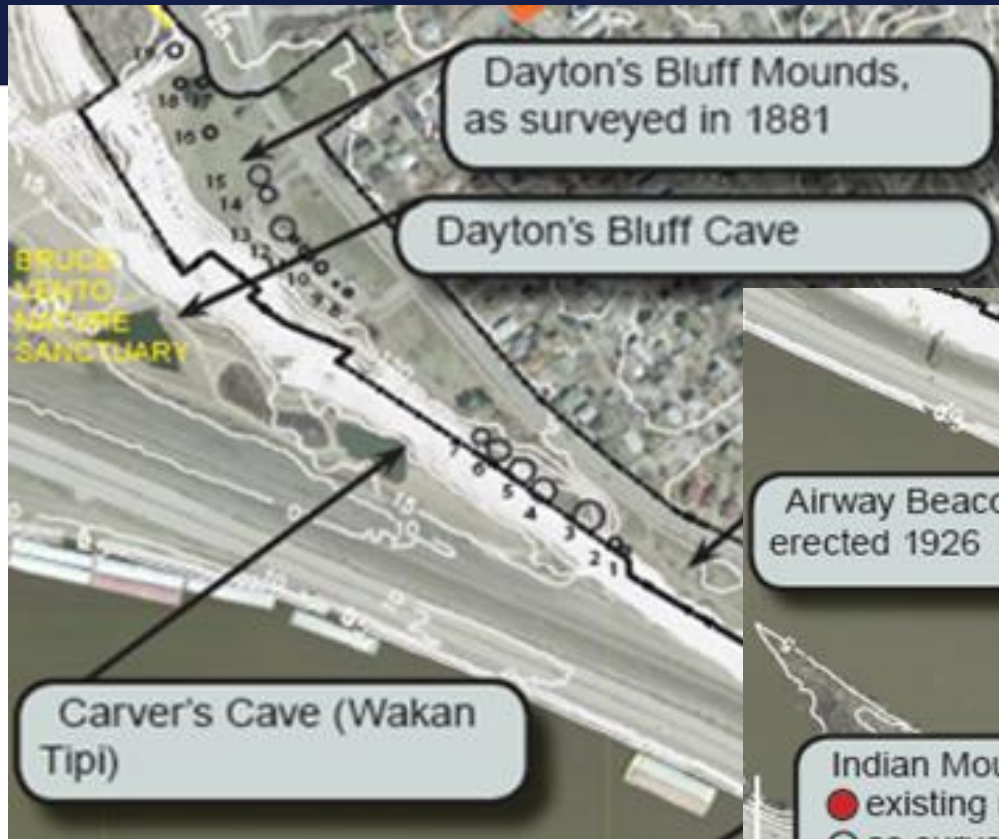
Everything seen and unseen—animals, plants, humans, rocks, earth, waters, spirits.

Used to guide decision-making and actions.



A bluff section diagram showing the concept of Mitákuye Owásin









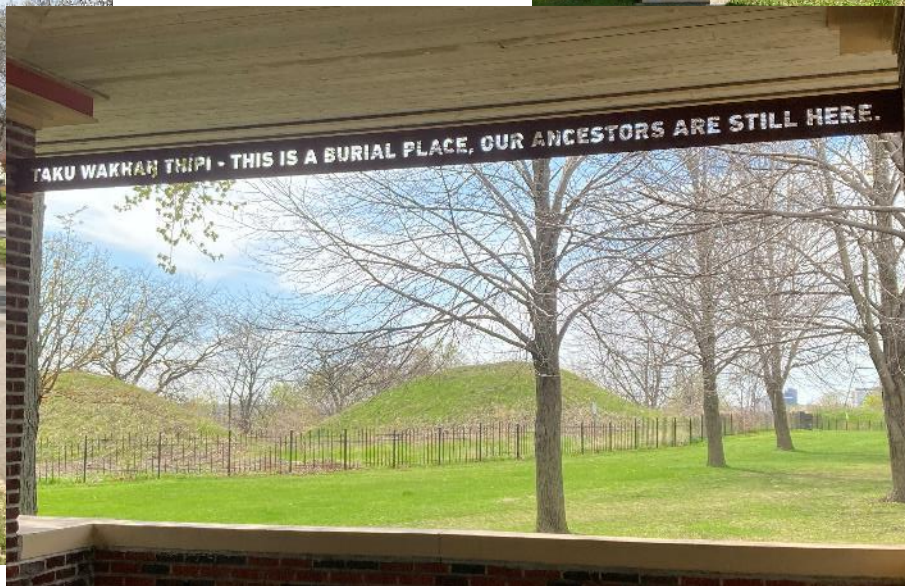
# Engagement

- Collaborative process
- Tribal Historic Preservation Officers representing Nations who have associations with the burial mounds and area.
- 4 Project Advisory Team meetings included community members, representatives of Dakota communities, and other stakeholders.
- 3 Community Engagement Events brought together residents, project advisory team, interest groups, and general public.





# Approach





- Establish a Mound Management Plan
- Protection and restoration of natural resources
- Renaming the site
- New policy on access
- Sensitive removal of existing buildings, structures, circulation routes, and other features that impact places of burial
- Limit traffic and roads



## Next Steps

- Amendment to 2010 Master Plan
- Continue work to transform regional park per long term plan
- Develop and expand management policies that are more inclusive
- Formalize partnerships and continue to strengthen relationships with Tribal stakeholders
- Address ongoing policy related to condition, maintenance, use, safety, messaging
- Consider process and policy for name modification





# Upcoming conversations

## Partnerships –

- Tribal Nations
- Lower Phalen Creek Project
- Community
- NAGPRA (Native American Graves Protection and Repatriation Act)
  - Repatriation of found and collected items
  - Possible impact – reinterment to burial mounds
- MIAC –
  - Cemetery delineation – effects on “Park”
  - Mounds maintenance plan
- Co-Management v Land-Back
- Continuation of implementation of strategy outlined in Cultural Landscape Study
- Site naming





# Starting Point for Inclusion of Tribal Communities in Planning and Design for Cultural Landscapes

1. Develop on-going relationships with tribes.
2. Discuss project plans with tribal representatives before developing a scope of work.
3. Work with formal representatives of tribes (designated by the tribal government).
4. Go to visit tribes to better understand their perspective.
5. Ask tribal representatives how they would like to work with you.
6. Include tribal representatives on your project team.
7. Build flexibility into the process to allow for adjustment based on tribal requests.
8. Visit the project site with tribal representatives.
9. Meet face to face whenever possible.
10. Ask specific questions, be open to unexpected answers.
11. Listen and adjust, based on what you hear.
12. Develop formal agreements for inclusion of tribal representatives in long-term review and guidance of site management and interpretation programs and use for traditional activities (gathering specific plants, ceremonies, etc...).
13. Incorporate native language into interpretation of the site.
14. Teach visitors how to be respectful.

# Thank you!

## Questions? Insights?

