

Regional Park System Bonding Program FY2023 Projects and Equity Highlights

Regional Park Implementing Agency Presentations Part Two: Scott County, City of
Bloomington, Carver County, Dakota County, and Minneapolis Park and Recreation Board

Metropolitan Parks and Open Space Commission Meeting

January 6, 2022



Purpose of today's presentation

- Present the second half of the proposed bonding projects for fiscal year 2023
- 5 Agencies will present their list of projects today and highlight a project designed to advance equitable use of the Regional Park System
 - Scott County
 - City of Bloomington
 - Carver County
 - Dakota County
 - Minneapolis Park and Recreation Board

Regional Parks System Bonding Program

- The Bonding Program supports capital projects for the Regional Parks System (development, acquisition, and restoration)
- The Council has requested \$15 million for the FY2023 Bonding Program
- The Council matches every \$3 of state bonds with \$2 of regional park bonds
- \$15 million will be matched with \$10 million in Council funds
- Funds are allocated to the Regional Park Implementing Agencies based on a formula driven by population (70%) and non-local park use (30%)

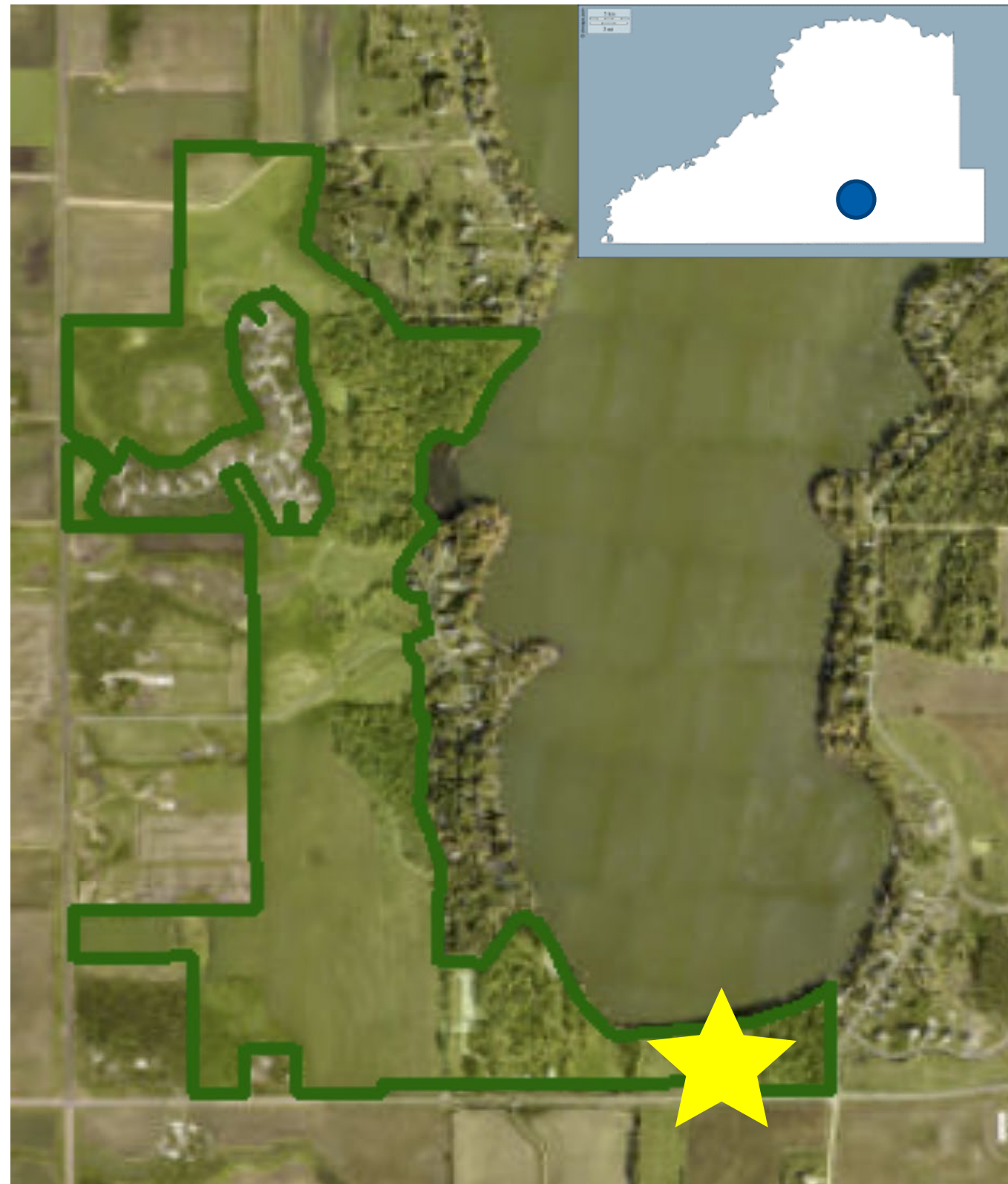
Agency project lists

- The Agencies submit a list of potential projects in preparation for the upcoming legislative session
- These projects are subject to change due to final funding allocations and appropriation language that authorizes the Agency boards to select projects
- As part of today's presentation, Agencies were asked to identify which projects are designed to advance equitable use of the Regional Park System
- Agency staff will now present their projects

Scott County FY2023 Bonding Projects
Total Estimated Allocation: \$\$874,097

	Equity Focus Area
Project Name: Phase 1 development of a new lakeside group camp at Cedar Lake Farm including design and construction of an access driveway, parking lot, paved trail connection, fishing pier and lakeside picnic area	Accessibility; Age; Race

Phase 1 Development of Lakeside Group Camp at Cedar Lake Farm Equity Highlight- Scott County



What:

- To develop infrastructure (driveway, parking, trails) and a complementary amenity (fishing pier and lakeside picnicking), all of which serve to support a future phase to that will add a group camp, camper cabins, restroom/shower facilities, final trail connection.

Why:

- To build upon the rich local history of gatherings and celebrations in the park
- To connect park users to native forest and lakeside recreation
- Provide amenities to support various recreational interests and multi-generational activities for a growing and diversifying area

Development of Lakeside Group Camp at Cedar Lake Farm Equity Highlight- Scott County

Accessibility

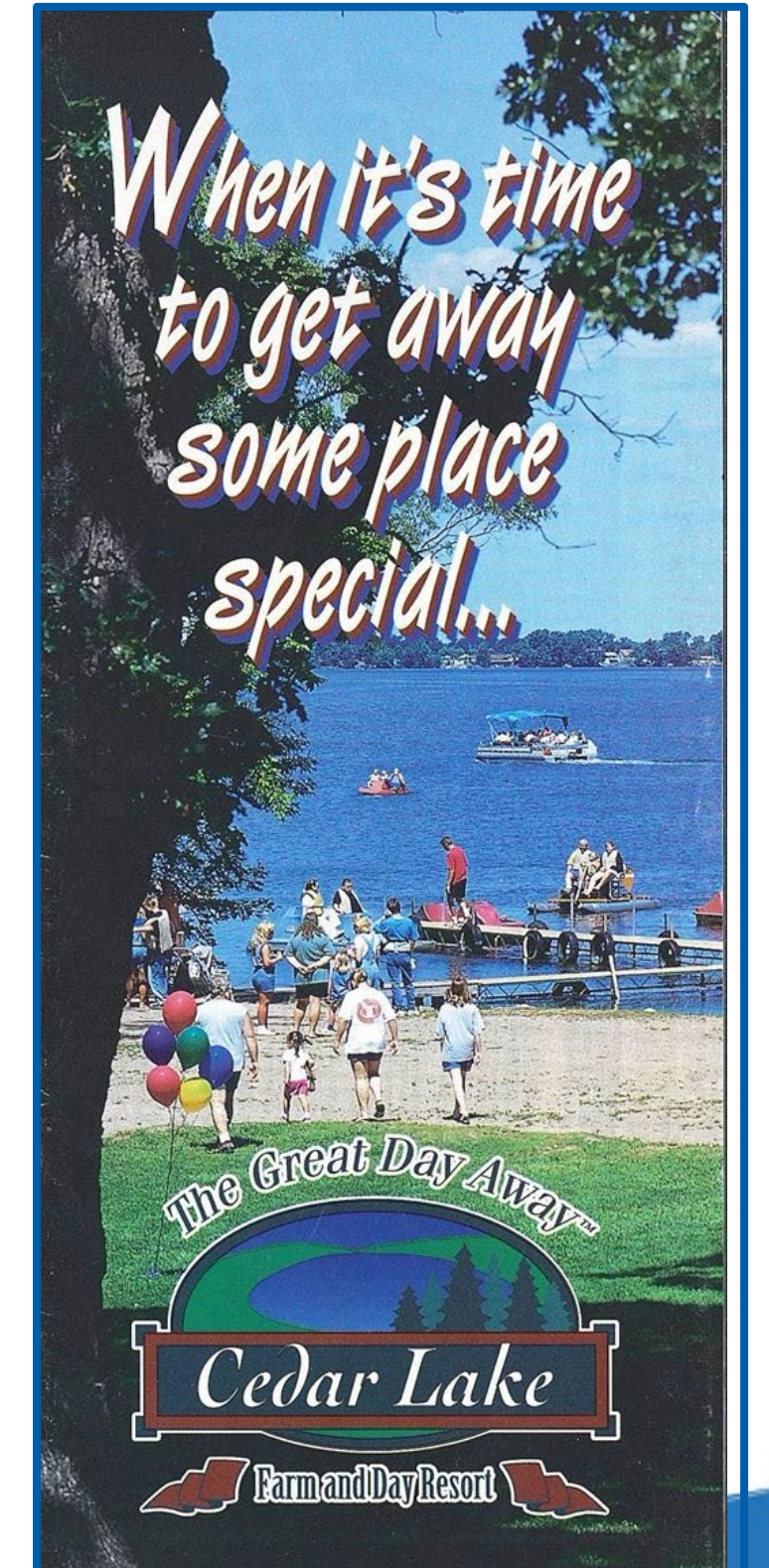
- Accessible tent pads & sites, fishing pier, restroom, group reservation facilities
- Increased accessible trail connections to rest of the park

Age

- Supports activities that encourage multi-generational use
 - Campsites large enough for families, easy access from camping to lakeside, fishing, canoe/kayaking

Race

- Supports multi-generational activities popular within BIPOC communities
 - Camping, group-camping, fishing, picnicking



City of Bloomington FY2023 Bonding Projects
Total Estimated Allocation: \$649,986

Equity Focus Area

Project Name: Normandale Lake Site Improvements

ADA Accessibility

Project name: Bush Lake Beach Site Improvements

ADA Accessibility



Hyland-Bush-Anderson Park Reserve – Bush Lake Beach Improvements



Update site amenities including playground and gathering spacing it improve accessibility.

Carver County FY2023 Bonding Projects
Total Estimated Allocation: \$736,110

Equity Focus Area

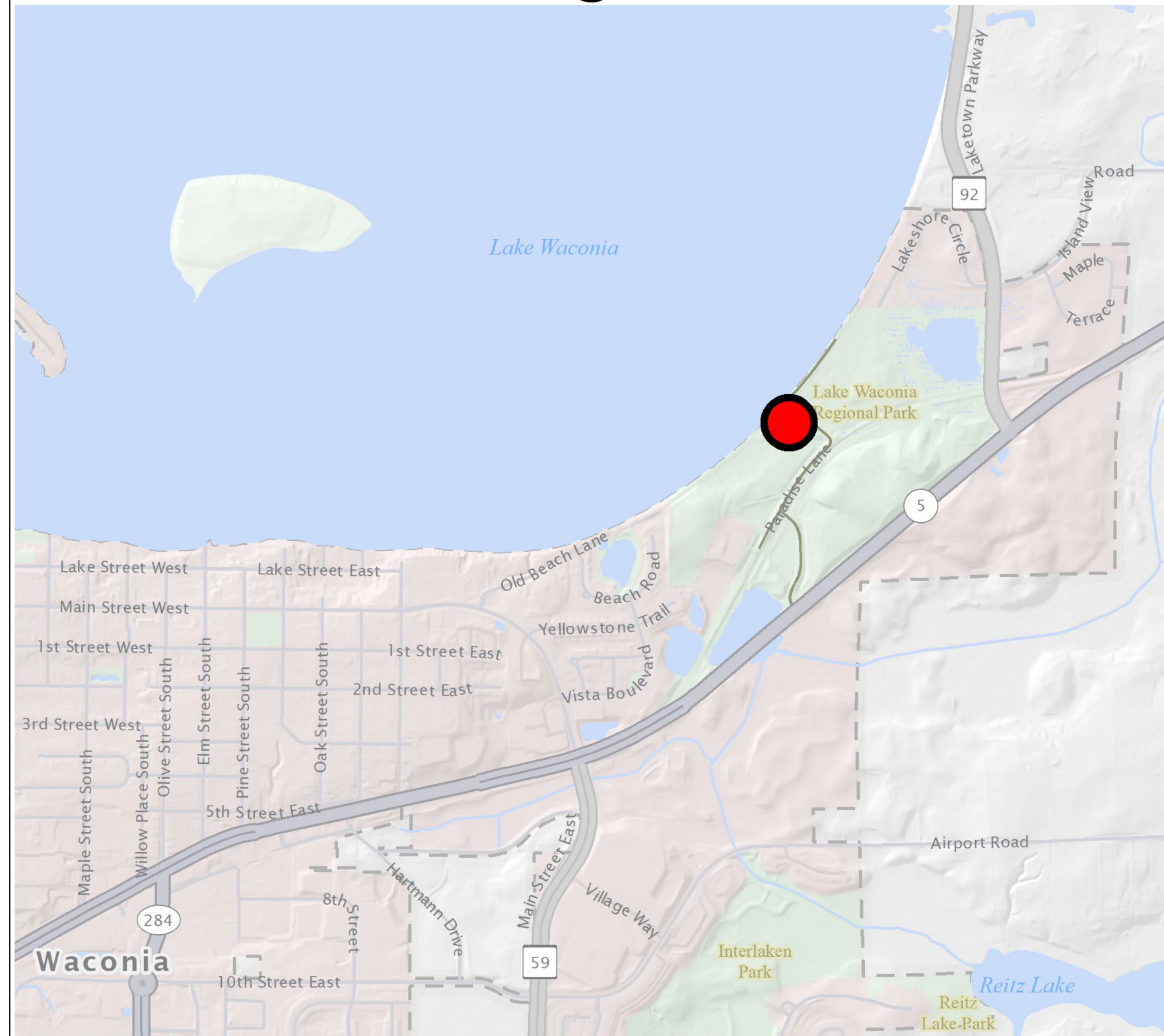
Lake Waconia Regional Park Waterfront Service Center: Picnic Pavilion, Restrooms, Event Room, Office Space.

Ability, Age



Bonding Project Equity Highlight- Carver County

Carver County FY2023 Bonding Project Lake Waconia Regional Park Waterfront Service Center



This map was created using a compilation of information and data from various City, County, State, and Federal offices. It is not a surveyed or legally recorded map and is intended to be used as a reference. Carver County is not responsible for any inaccuracies contained herein.

0 0.5 1 Mi



11360 Hwy 212, Suite 1
Cologne, MN 55322
(952) 466-5200
Created: 11/16/2021

- Carver County is working on infrastructure to provide access to services and facilities at Lake Waconia RP. This park is currently without accessible picnic pavilion, restrooms, indoor event/activity space and equipment rental services.
- The County is striving to provide an inclusive facility servicing a wide array of ages and users at the planned Waterfront Service Center. This new facility will support not only those in the ability and age communities but also those who accompany and participate with them.

Dakota County FY2023 Bonding Projects
Total Estimated Allocation: \$2,553,607

Equity Focus Area

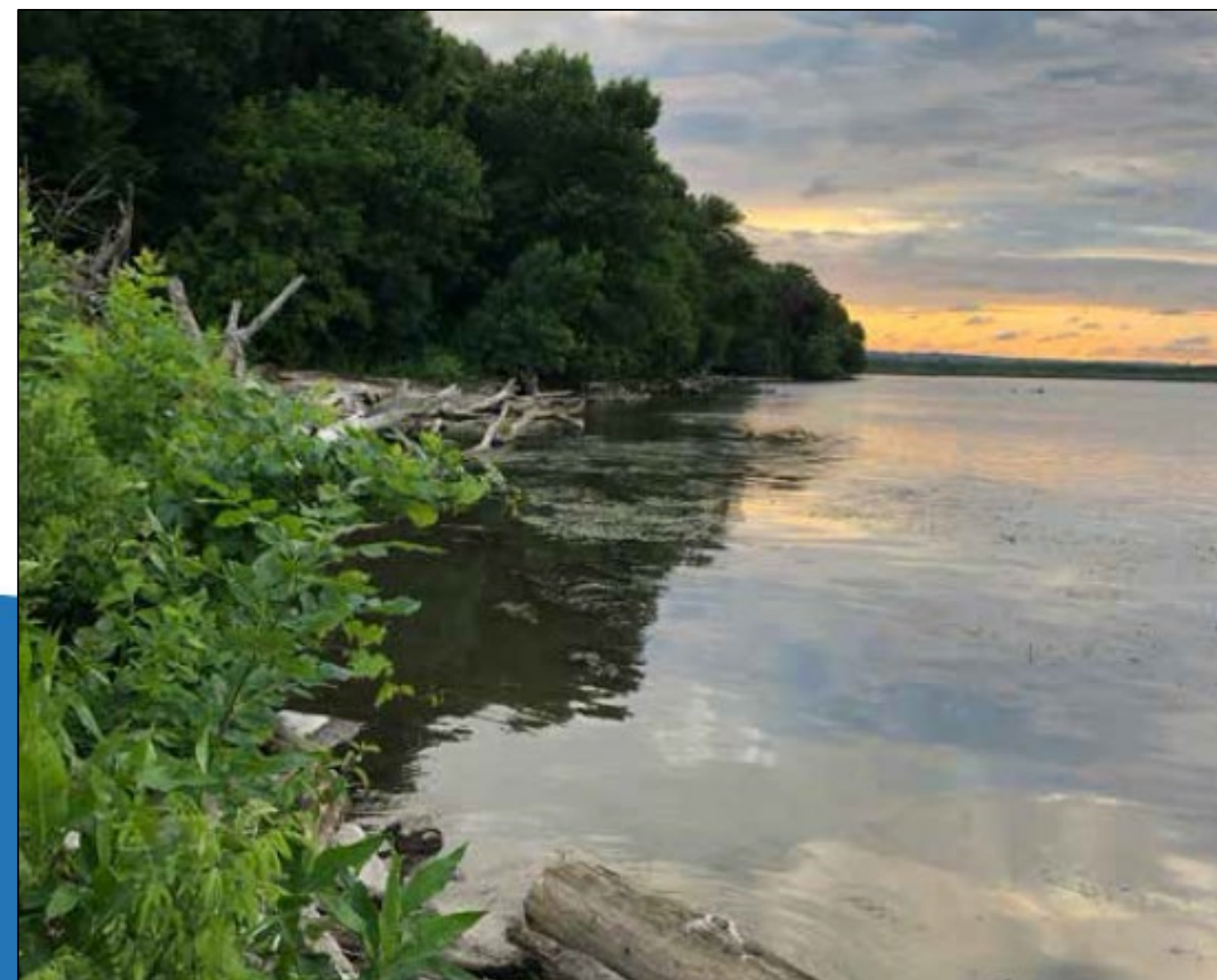
Spring Lake Park Reserve Master Plan Improvements: Improved access and visitor experience enhancements, and protection and interpretation of parkwide natural and cultural resources.

Race, ethnicity, age, national origin, ability, and income



Bonding Project Equity Highlight- Dakota County

- Sacred place, with rich cultural and historical significance
- Improvements balance stewardship with storytelling
- Co-creation of new opportunities for access, education, enjoyment, and reflection

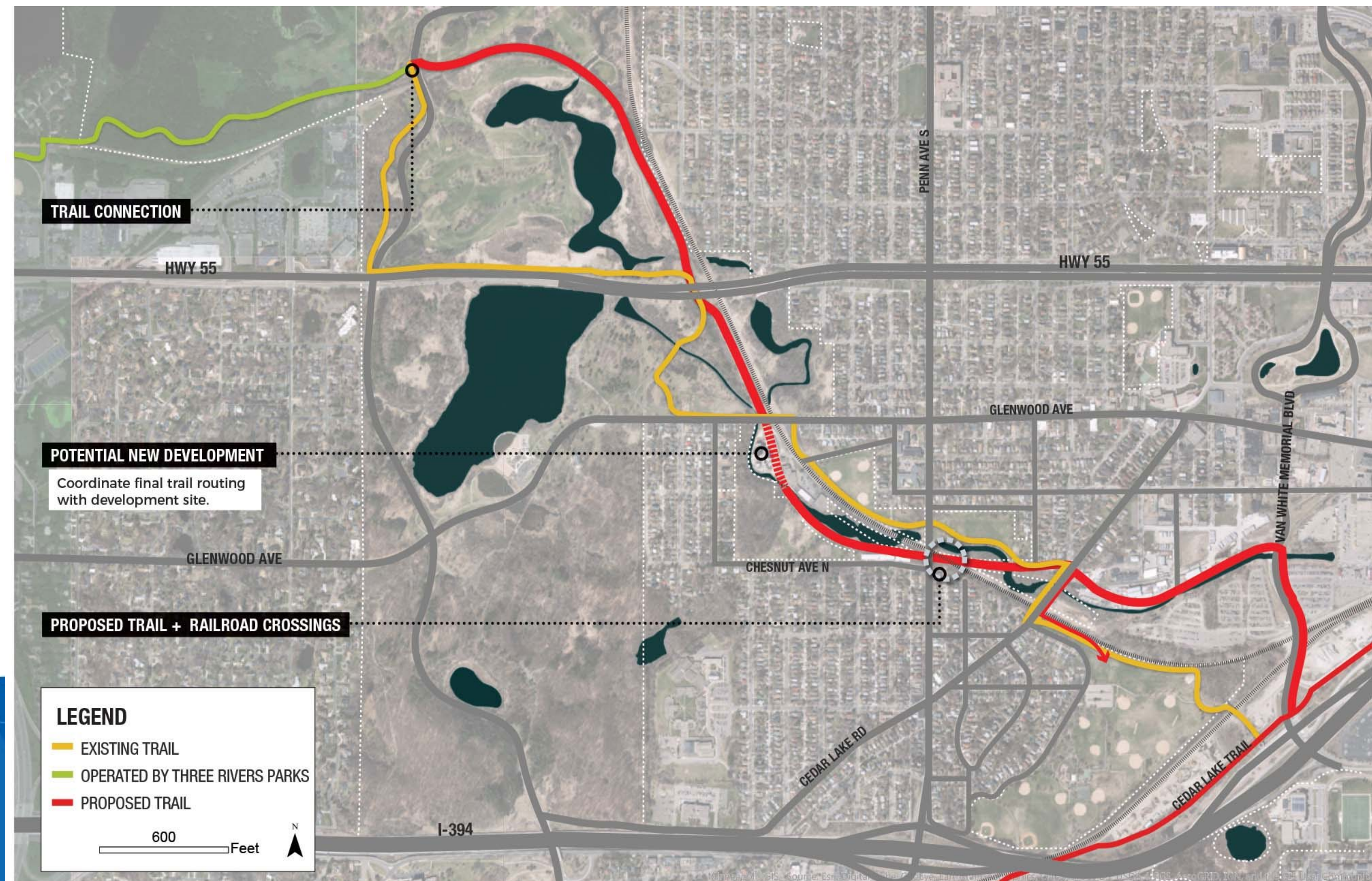


Minneapolis Park and Recreation Board FY2023 Bonding Projects Total Estimated Allocation: \$5,480,882	Equity Focus Area
Luce Line Land Acquisition and Development: CP Rail corridor acquired. Trail segments constructed. Wayfinding and visitor comfort facilities installed.	Race, Ability, Income
Shingle Creek Master Plan Implementation: New amenities constructed, including trails, bridges, wayfinding, comfort facilities. Riparian habitat enhanced.	Age, National origin, Ability, Income
Victory/Wirth Trail and Environmental Improvements: Trail and trail amenities reconstructed. Wayfinding improved. Environmental enhancements constructed.	Race, Ability, Income
Above the Falls Upper Harbor Terminal Park: Parkland acquired. Trails, amenities, play areas, courts, wayfinding, comfort facilities implemented. Riparian and shoreline habitat enhanced.	Race, Ethnicity, National origin, Ability, Income
Minneapolis Chain of Lakes Master Plan Implementation: Trails, amenities, play areas, and wayfinding improved and implemented. Environmental enhancements constructed. Aquatic and terrestrial habitat improved.	Age, Ability



Bonding Project Equity Highlight: Luce Line- MPRB

- This Regional Trail bridges a significant socio-economic divide in Minneapolis
- Currently the least legible, least safe Regional Trail in the city
- Master plan convened people from Harrison and Bryn Mawr to envision the Bassett's Creek Valley together
- MPRB is working with Trust for Public Land on acquisition AND gentrification / anti-displacement analysis
- Completion will create a trail loop in north Minneapolis, where NO LOOPS currently exist



PROPOSED PLAN: LUCE LINE REGIONAL TRAIL

Questions, Comments, and Discussion

Jessica Lee, Senior Parks Planner
jessica.lee@metc.state.mn.us

Community Development Division

