



**METROPOLITAN**  
C O U N C I L

# **Luce Line, Medicine Lake, Shingle Creek, and Northeast Diagonal LRT Regional Trail Plans**

Business Item 2022-143

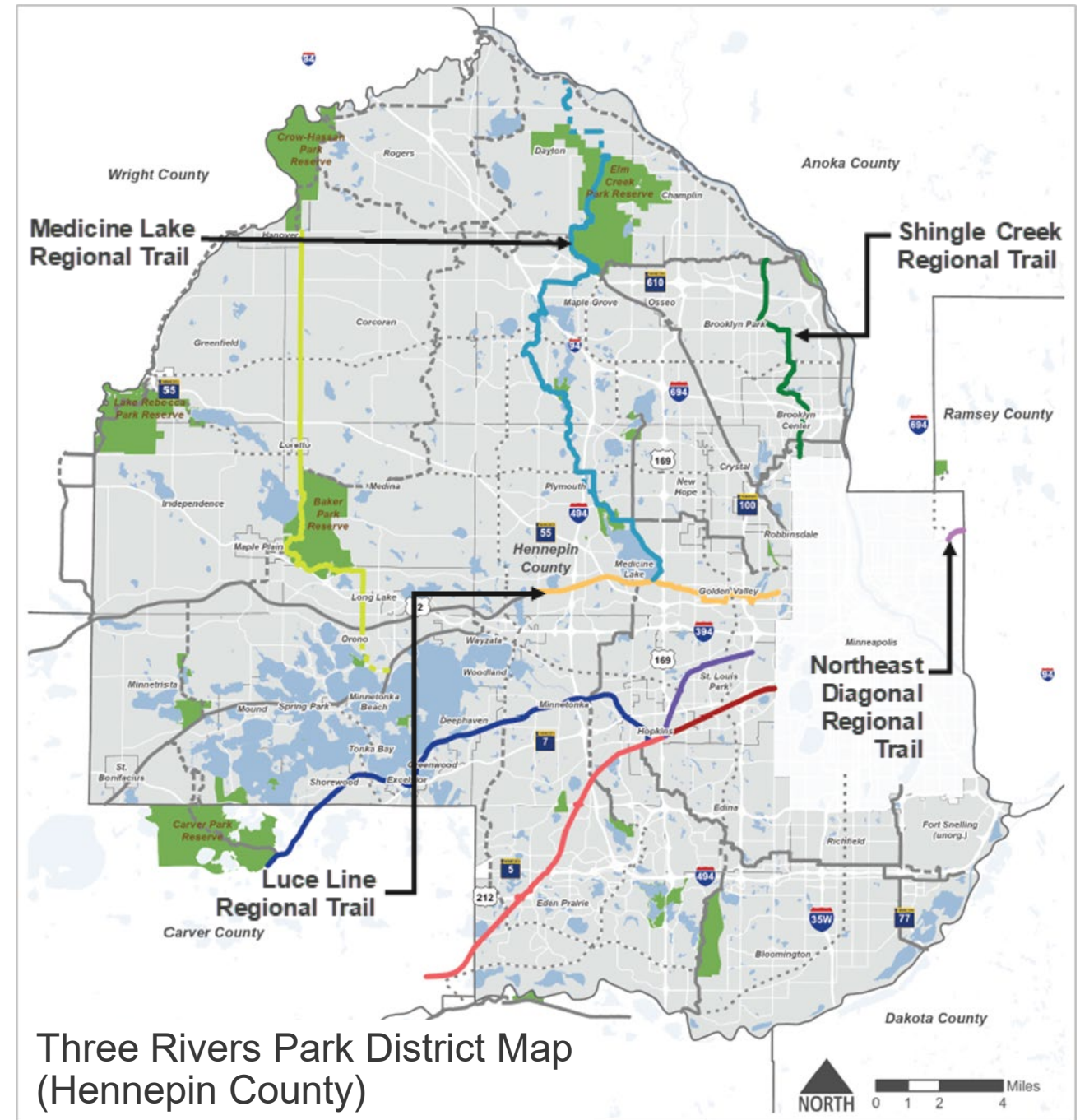
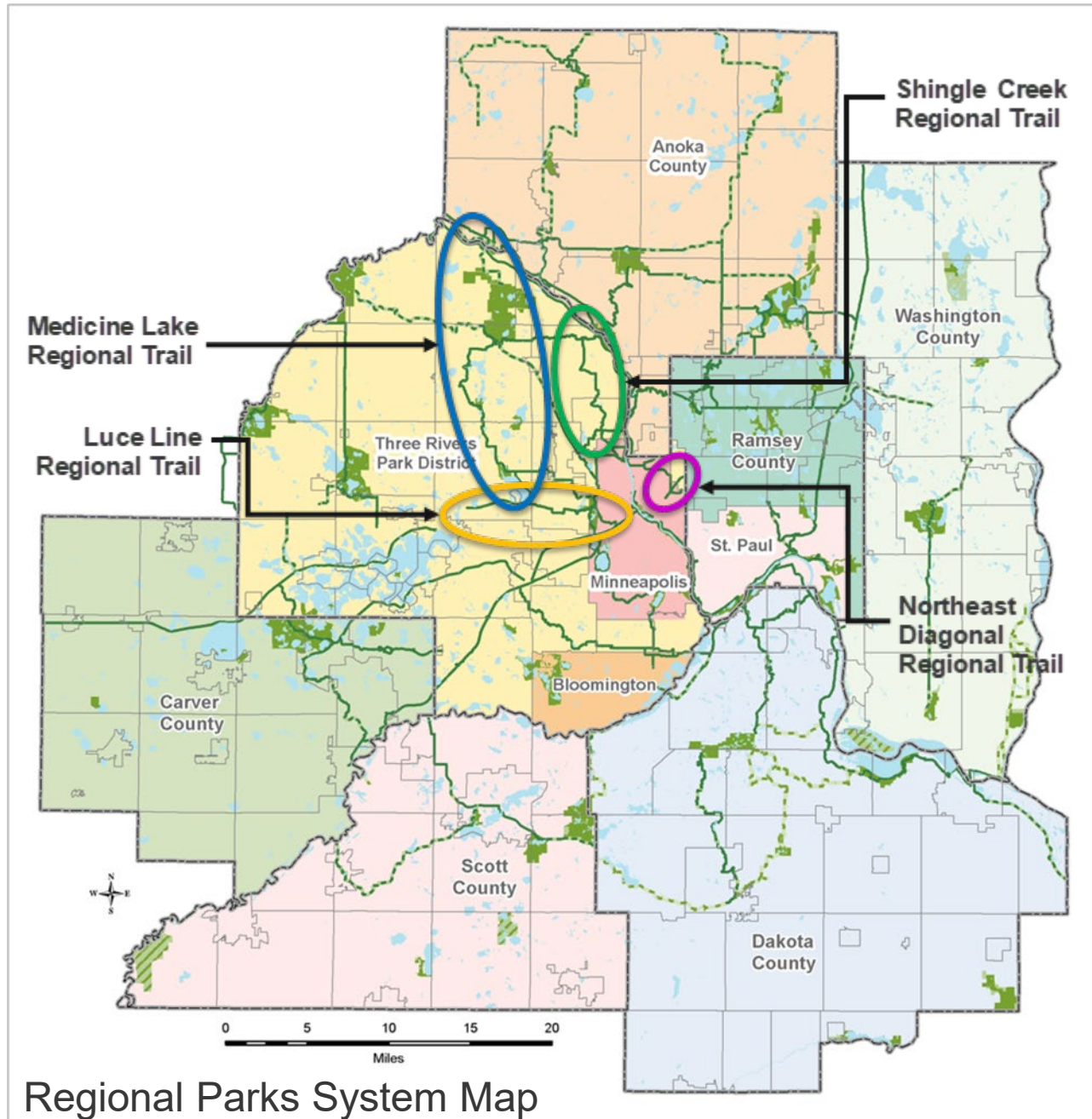
Metropolitan Parks and Open Space Commission

Colin Kelly | Chee Yang

June 2, 2022



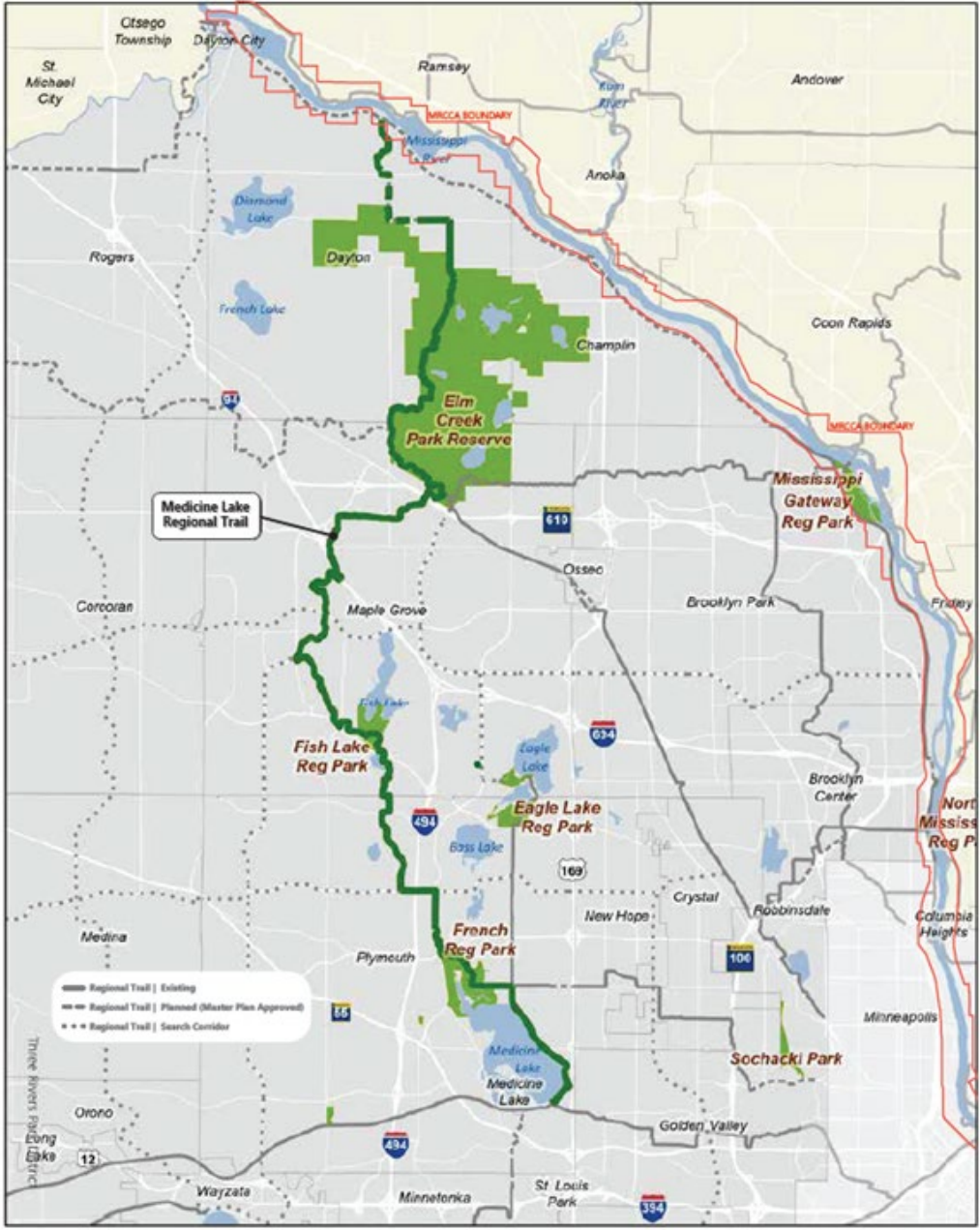
# Luce Line, Medicine Lake, Shingle Creek, and Northeast Diagonal LRT Regional Trail



# Luce Line & Medicine Lake Regional Trails



Luce Line Regional Trail



Medicine Lake Regional Trail

# Shingle Creek & Northeast Diagonal Regional Trails



Shingle Creek Regional Trail



Northeast Diagonal Regional Trail

# Partner Engagement



## Engagement Efforts

Engagement phases:

- a. Phase 1 – Engage local city and agency partners
- b. Phase 2 – Engage members of the public, underrepresented community members and existing regional trail users
- c. Phase 3 – Reengaged partners
- d. Phase 4 – Obtain feedback from community members and partners
  - i. Informed of decisions
  - ii. How their feedback was considered during the process

Cities & Agency Partners

- a. Cities of Medicine Lake, Plymouth, Golden Valley, Dayton, Maple Grove, Brooklyn Park, Brooklyn Center, and St. Anthony
- b. Minnesota Department of Transportation, Minnesota Department of Natural Resources, and Hennepin County

# Public Engagement

## Goals

- Engage all interested and affected parties.
- Make engagement easy.
- Focus engagement on improving the safety, comfort, and use of the regional trail for all users, especially new users and groups who are currently underrepresented.
- Develop/expand relationships.
- Mitigate existing racial, ethnic, cultural, or linguistic barriers and include people of diverse ages, races, ethnicities, incomes, national origins, and abilities.

## Overall Findings

- Trail realignments & local connections
- Reconstruction and paving
- Intersection improvements
- Drainage
- Sustainability
- Enhanced wayfinding & map accessibility
- Trail amenities (*benches, water fountains, etc.*)
- Winter maintenance

# Equity Analysis



## Overall Findings

Phase 2 of the engagement process focused on engaging members of the public, **underrepresented community members**, and existing regional trail users.

- Those who are not using the regional trails
- Historically left out of park and trail planning processes

Engagement efforts focused primarily on building awareness, understanding barriers, and identifying infrastructure improvements that help create a more inviting and comfortable user experience.

The Park District will remain open to additional recommendations to better integrate the regional trails directly into the communities they are intended to serve, which includes but is not limited to:

- Improving safety and providing more direct routes, where possible
- Better connections with nature, parks, and other destinations
- Developing more operational/programming solutions to increase awareness, comfort and ability, and remove barriers such as lack of equipment

The Park District will continue to be inclusive and responsive to changing needs and priorities.

# Development Concept: Luce Line Regional Trail

## Luce Line Regional Trail – 8.8 miles

- Current estimated 480,000 annual visits
  - By 2040, an estimated 573,000 annual visits
- Underrepresented groups include:
  - People 5 to 34 years old
  - Black adults
  - People from households with an annual income of \$75,000 or less
- The total acquisition cost estimate is \$76,320
- Total estimated improvement cost is \$282,000
- Estimated cost for operations and maintenance is \$54,000/year

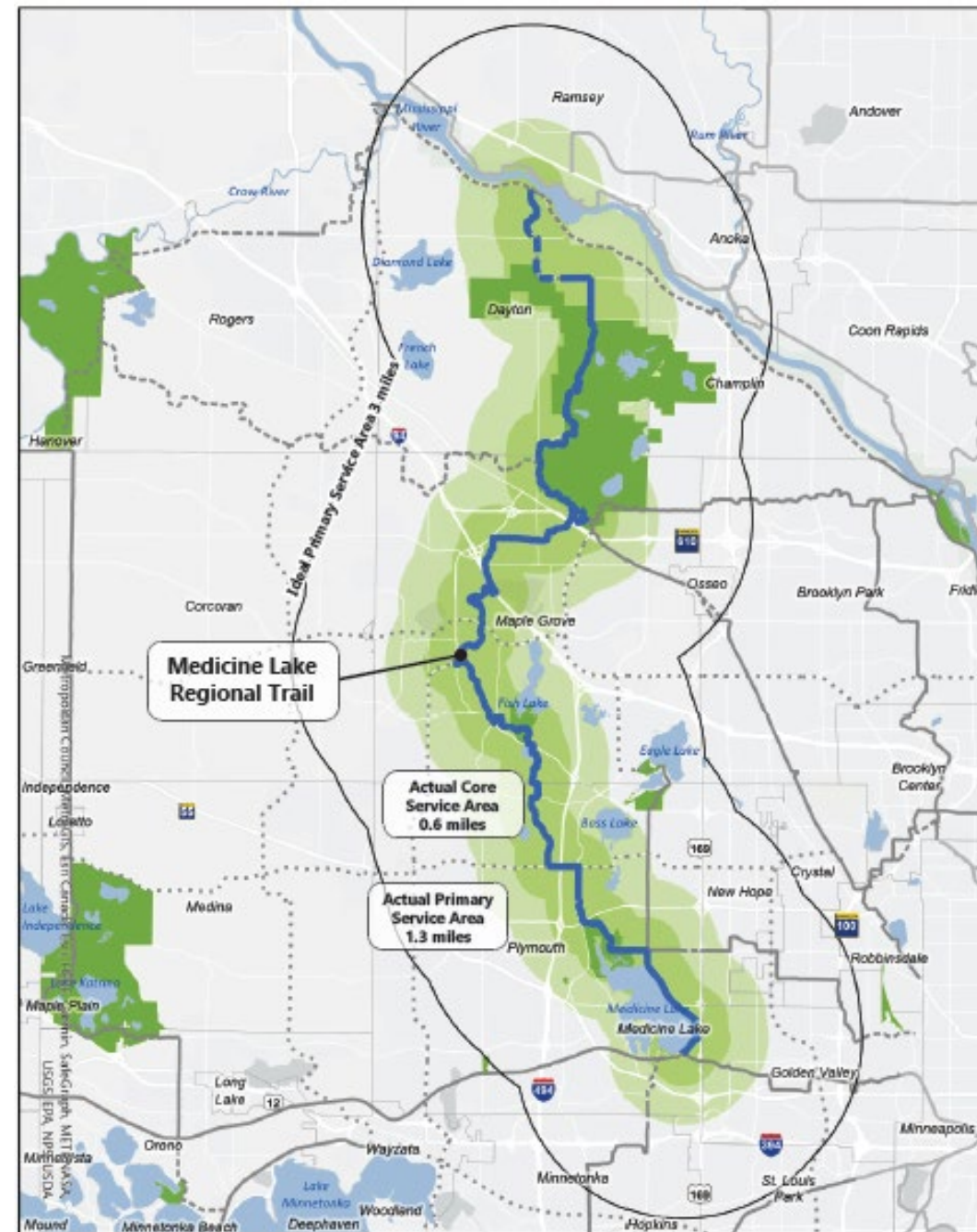




# Development Concept: Medicine Lake Regional Trail

## Medicine Lake Regional Trail – 25.6 miles

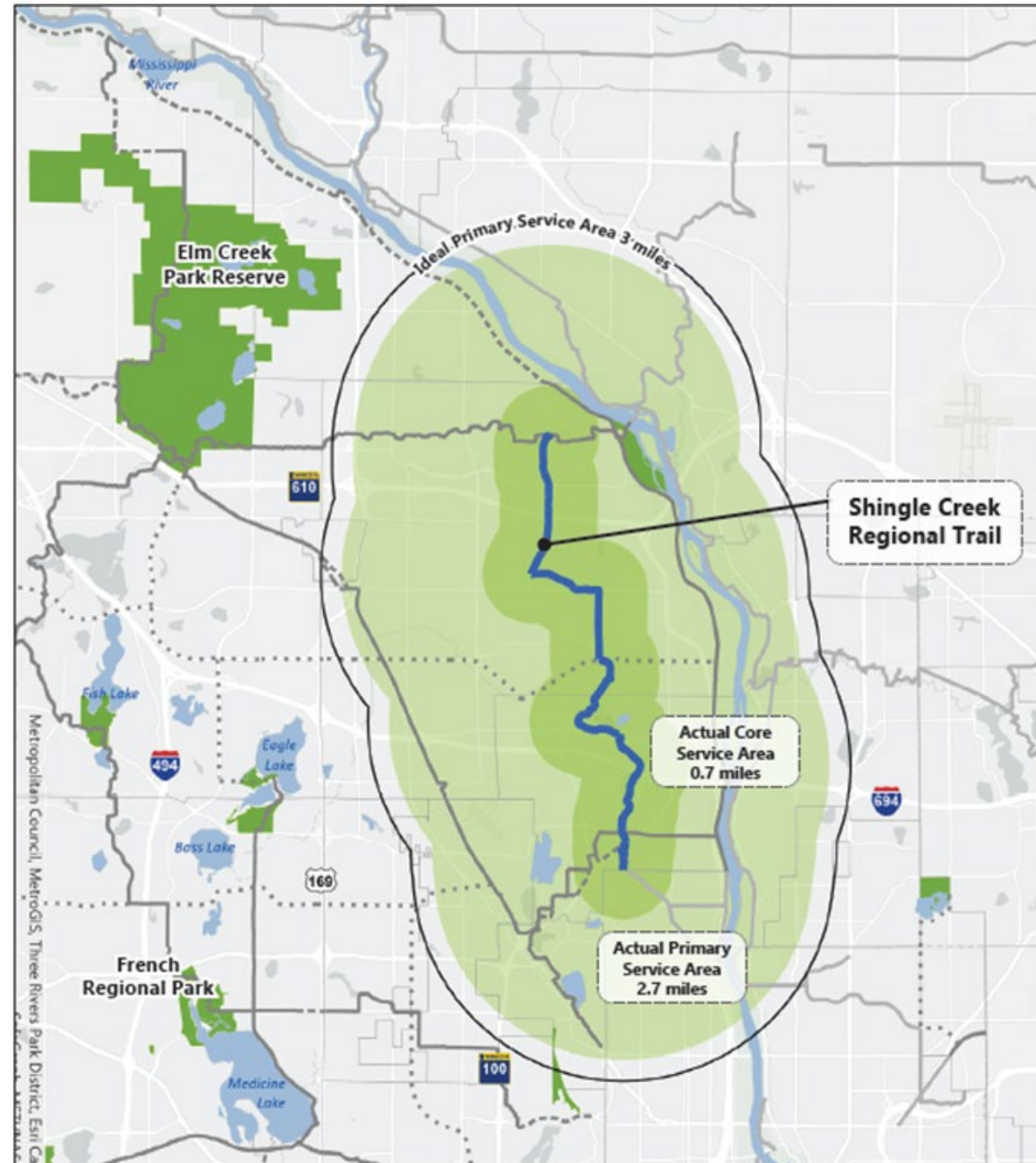
- Current estimated 665,000 annual visits
  - By 2040, an estimated 880,000 annual visits
- Underrepresented groups include:
  - People under 18 years old or over 75 years old
  - Black adults
  - People from households with an annual income of \$75,000 or less
- The total acquisition cost estimate is \$373,412
- Total estimated improvement cost is \$3,019,000
- Estimated cost for operations and maintenance is \$119,000/year



# Development Concept: Shingle Creek Regional Trail

## Shingle Creek Regional Trail – 8.4 miles

- Current estimated 312,000 annual visits
  - By 2040, an estimated 366,000 annual visits
- Underrepresented groups include:
  - People between 10- and 17-year-old
  - Black adults
  - People from households with an annual income of \$50,000 or less
- The total acquisition cost estimate is \$282,000
- Total estimated improvement cost is \$4,087,000
- Estimated cost for operations and maintenance is \$51,000/year



# Development Concept: Northeast Diagonal Regional Trail

## Northeast Diagonal Regional Trail – 0.6 miles

- Current estimated 65,000 annual visits
  - By 2040, an estimated 81,000 annual visits
- The regional trail meets or exceeds visitation expectations for all demographic categories
- No acquisition and improvement cost
- Estimated cost for operations and maintenance is \$5,000/year



# Overall Estimated Cost



## Estimated Cost

- The total estimated acquisition and improvement costs for the Luce Line, Medicine Lake, Shingle Creek, and Northeast Diagonal Regional Trails is \$8,119,000.
- The total estimated operations and maintenance costs for the Luce Line, Medicine Lake, Shingle Creek, and Northeast Diagonal Regional Trails is \$229,000.
- The combined total estimated cost for the Luce Line, Medicine, Lake, Shingle Creek, and Northeast Diagonal Regional Trails is \$8,348,000.

*Table 1: Total Estimated Cost for Luce Line, Medicine Lake, Shingle Creek, and Northeast Diagonal Reg. Trails*

<b>Regional Trail</b>	<b>Acquisition &amp; Improvements</b>	<b>Operations &amp; Maintenance</b>
Luce Line Regional Trail	\$358,000	\$54,000
Medicine Lake Regional Trail	\$3,392,000	\$119,000
Shingle Creek Regional Trail	\$4,369,000	\$51,000
Northeast Diagonal Reg. Trail	\$0	\$5,000
<b>Total Costs</b>	<b>\$8,119,000</b>	<b>\$229,000</b>

# Rationale for Proposed Actions

The Luce Line, Medicine Lake, Shingle Creek, and Northeast Diagonal Regional Trail Master Plans are consistent with the requirements of the:

- *2040 Regional Parks Policy Plan*
  - Planning Strategy 1
- Other Council policies

# Proposed Actions

- Approve Three Rivers Park District's Luce Line Regional Trail Master Plan.
- Approve Three Rivers Park District's Medicine Lake Regional Trail Master Plan.
- Approve Three Rivers Park District's Shingle Creek Regional Trail Master Plan.
- Approve Three Rivers Park District's Northeast Diagonal Regional Trail Master Plan.
- Require Three Rivers Park District, prior to initiating any construction of new or updating of existing paths, trails, bridges, or any other construction project, to send preliminary plans to the Metropolitan Council Environmental Services Interceptor Engineering Assistant Manager.

Ua Tsaug  
Pilamya ye/do

Miigwech

Gracias

Thank you

**Colin Kelly**

Planning Analyst, Community Development

[Colin.Kelly@metc.state.mn.us](mailto:Colin.Kelly@metc.state.mn.us)

(651) 602-1361

**Chee Yang**

Planner, Community Development

[Chee.Yang@metc.state.mn.us](mailto:Chee.Yang@metc.state.mn.us)

(651) 602-1449

