



Historical-Cultural Study Update and Next Steps

Information Item



June 2, 2022 Metropolitan Parks and Open Space Commission

Historical Cultural Study Summary

- **Goal Statement:** Develop a baseline history of the Regional Parks System and develop tools to bring it alive with park agencies, telling a broader history of our system
- **Purpose:** To understand the region's history as it relates to how we arrived at today, and daylight our Regional Parks System's past and present-day inequitable practices
- **Approach:** In partnership with our Agencies, bring on a consultant to help us tell a broader history of the Regional Parks System using innovative tools and techniques

What have we done?

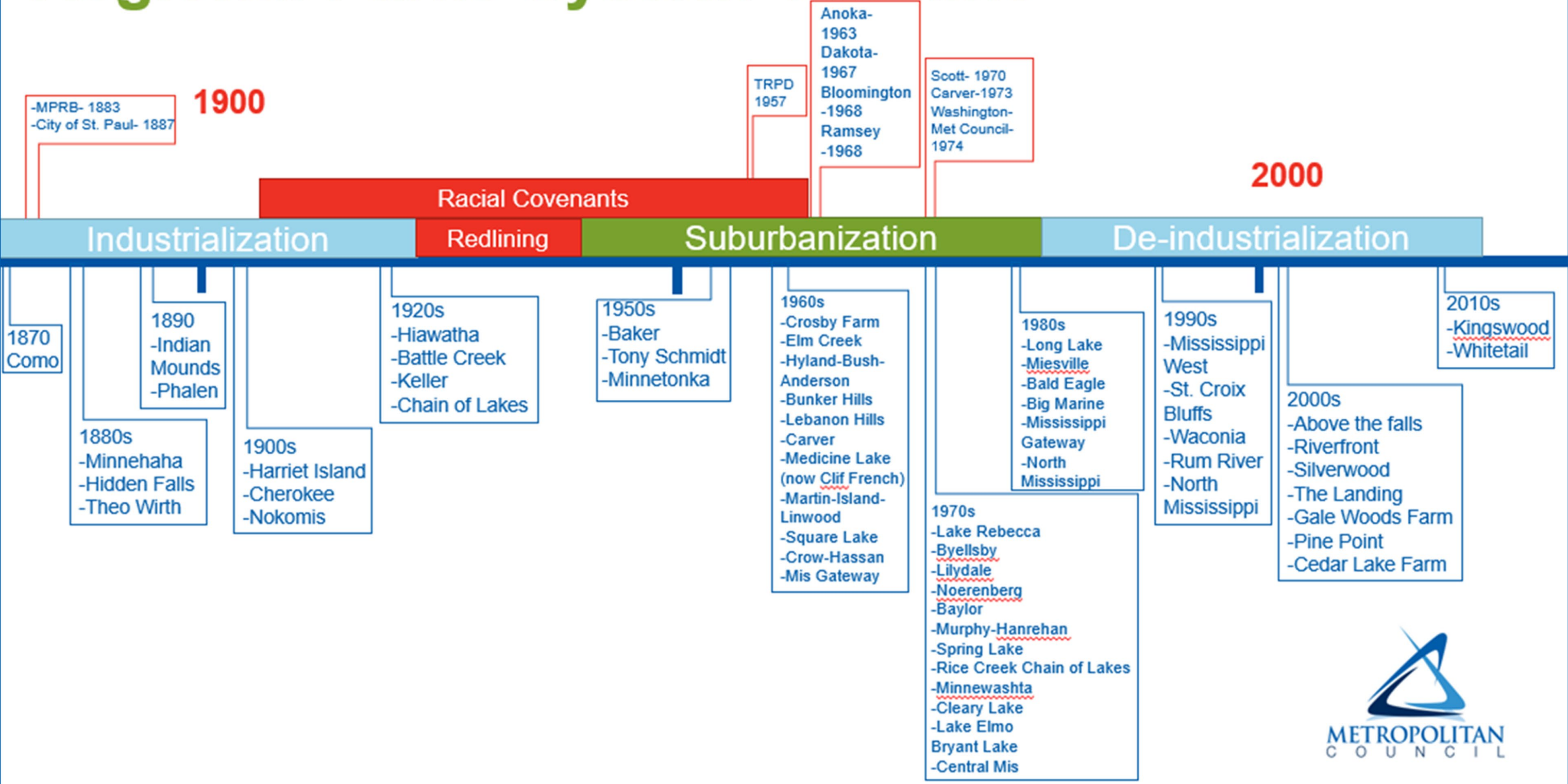


- Parks summer intern assembled report on the formation and history of the Regional Parks System
- Recorded a presentation on this report and shared it with the agency Historical-Cultural Study taskforce members
- Met with each agency to discuss the presentation and information gathered to-date, agency's desired outcomes, and next steps
- Shared meetings summary with agency taskforce
- Developed a Request for Proposal for a consultant

Regional Parks System Timeline

1900

2000



-MPRB- 1883
-City of St. Paul- 1887

TRPD
1957

Anoka-
1963
Dakota-
1967
Bloomington
-1968
Ramsey
-1968

Scott- 1970
Carver-1973
Washington-
Met Council-
1974

Racial Covenants

Industrialization

Redlining

Suburbanization

De-industrialization

1870
Como

1890
-Indian
Mounds
-Phalen

1880s
-Minnehaha
-Hidden Falls
-Theo Wirth

1900s
-Harriet Island
-Cherokee
-Nokomis

1920s
-Hiawatha
-Battle Creek
-Keller
-Chain of Lakes

1950s
-Baker
-Tony Schmidt
-Minnetonka

1960s
-Crosby Farm
-Elm Creek
-Hyland-Bush-
Anderson
-Bunker Hills
-Lebanon Hills
-Carver
-Medicine Lake
(now Clif French)
-Martin-Island-
Linwood
-Square Lake
-Crow-Hassan
-Mis Gateway

1970s
-Lake Rebecca
-Byellsby
-Lilydale
-Noerenberg
-Baylor
-Murphy-Hanrehan
-Spring Lake
-Rice Creek Chain of Lakes
-Minnewashta
-Cleary Lake
-Lake Elmo
Bryant Lake
-Central Mis

1980s
-Long Lake
-Miesville
-Bald Eagle
-Big Marine
-Mississippi
Gateway
-North
Mississippi

1990s
-Mississippi
West
-St. Croix
Bluffs
-Waconia
-Rum River
-North
Mississippi

2000s
-Above the falls
-Riverfront
-Silverwood
-The Landing
-Gale Woods Farm
-Pine Point
-Cedar Lake Farm

2010s
-Kingswood
-Whitetail



Development of Mind Map



- Summarized what we heard at each agency meeting
- Created a Mind Map to visualize what we heard
- Mind Map revealed a grouping of ideas- past, present, and future

HISTORICAL CULTURAL STUDY

PAST

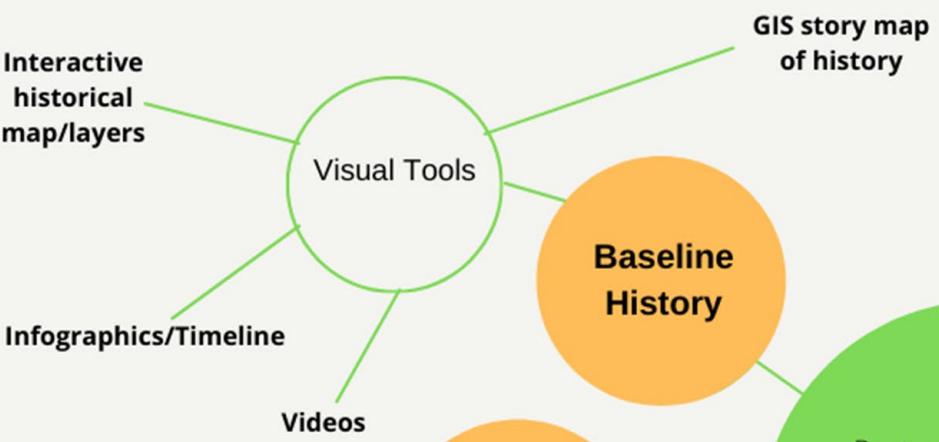
Past represents the history of the Regional Park System and the complex stories and exclusionary policies that shaped the system

PRESENT

Present represents bringing the history alive in the Regional Park System, using an individualized approach with the Implementing Agencies and community

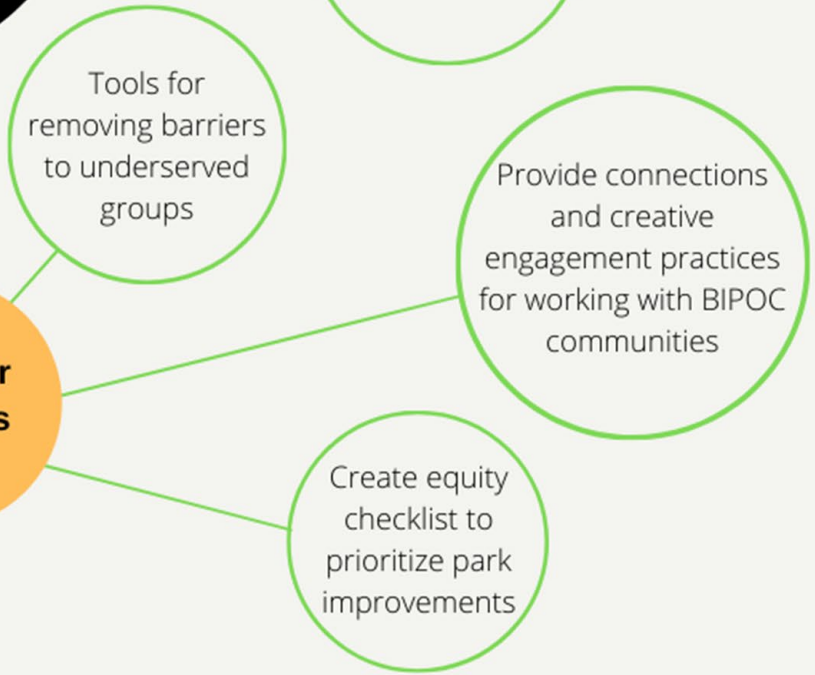
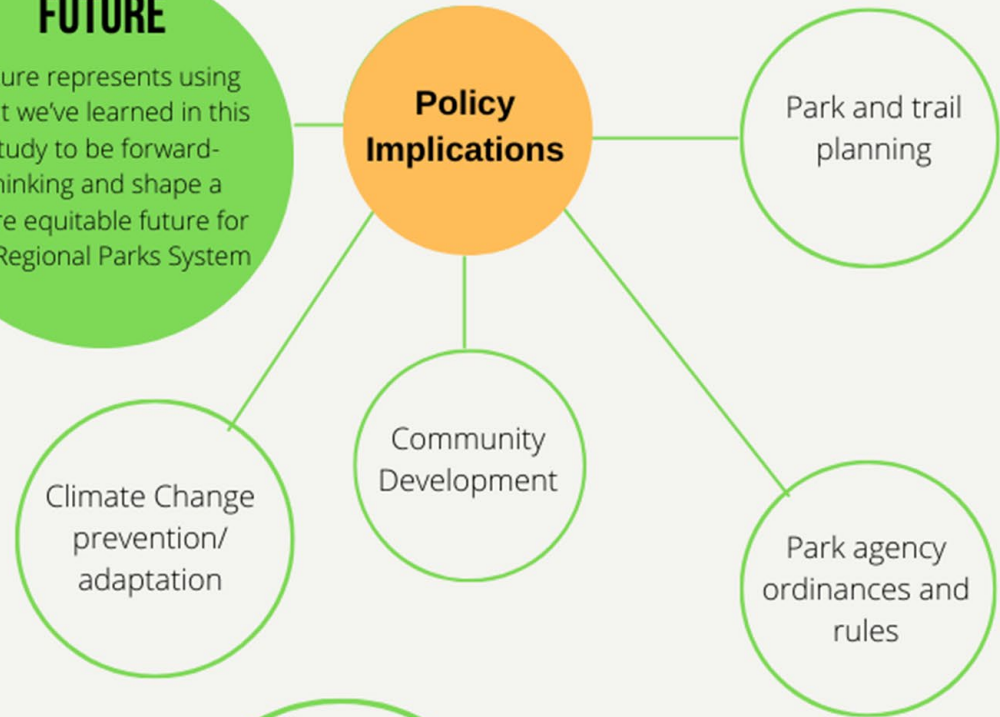
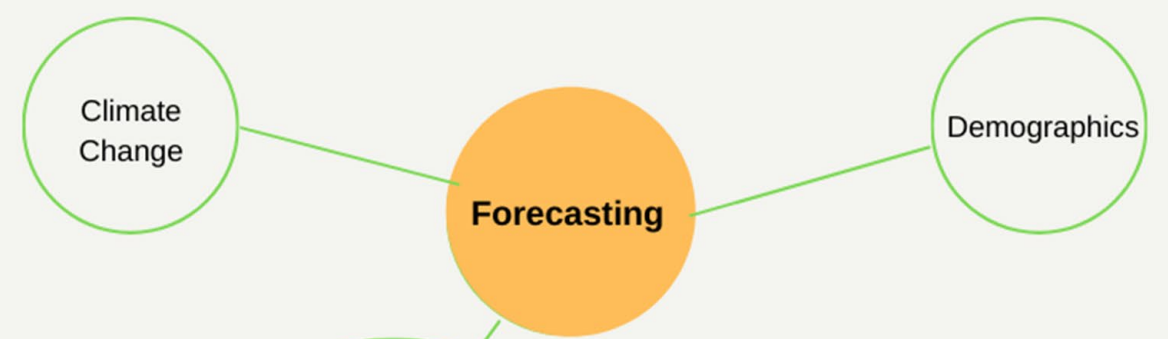
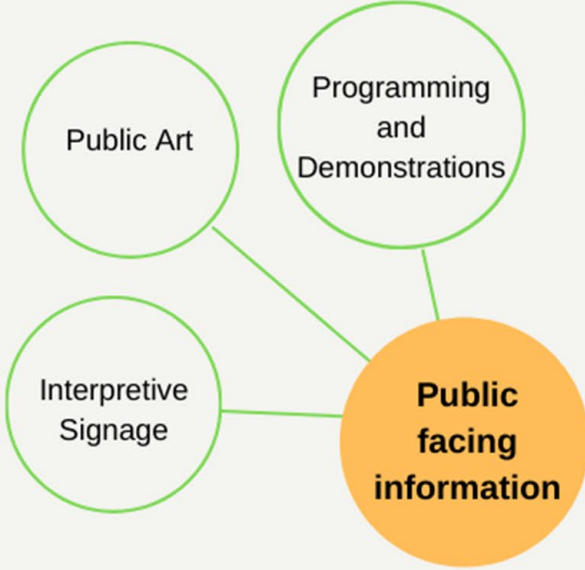
FUTURE

Future represents using what we've learned in this study to be forward-thinking and shape a more equitable future for the Regional Parks System



Walking tours, podcasts, videos

BIPOC stories and connections to outdoors



Past



Tell the history of the Regional Park System and the complex stories and exclusionary policies that shaped the system

- **Baseline History**
 - Visual tools (GIS story map, interactive GIS layers, videos, infographics, etc.)
- **Case Studies**
 - Specific park histories
 - Specific cultural groups histories

Present

Bring the history alive in the Regional Park System, using an individualized approach with the Implementing Agencies and community

- **BIPOC stories and connections to outdoors**
 - Walking tours, podcasts, videos
- **Tools for agencies**
 - Political tools
 - Engagement practices
 - Removing barriers to underserved groups
- **Public facing information**
 - Public art
 - Programming
 - Interpretive signage
 - Land acknowledgement

Future

Use what we learn in this study to be forward-thinking and shape a more equitable future for the Regional Parks System

- **Forecasting**
 - Demographics
 - Climate Change and equity impacts
- **Policy Implications**
 - Ordinances
 - Parks and trail planning
 - Community development

Next Steps

- Present to MPOSC and CDC
- RFP for consultant is posted on Met Council website, accepting proposals until June 7th
- Hire a consultant in June or July
- Reconvene Agency task force with consultant
- Develop consultant work plan

Discussion

- What are you most excited about?
- Are we missing anything?
- Are we headed in the right direction?

