

Business Item 2022-53

# Point Douglas Regional Trail Master Plan

## Saint Paul

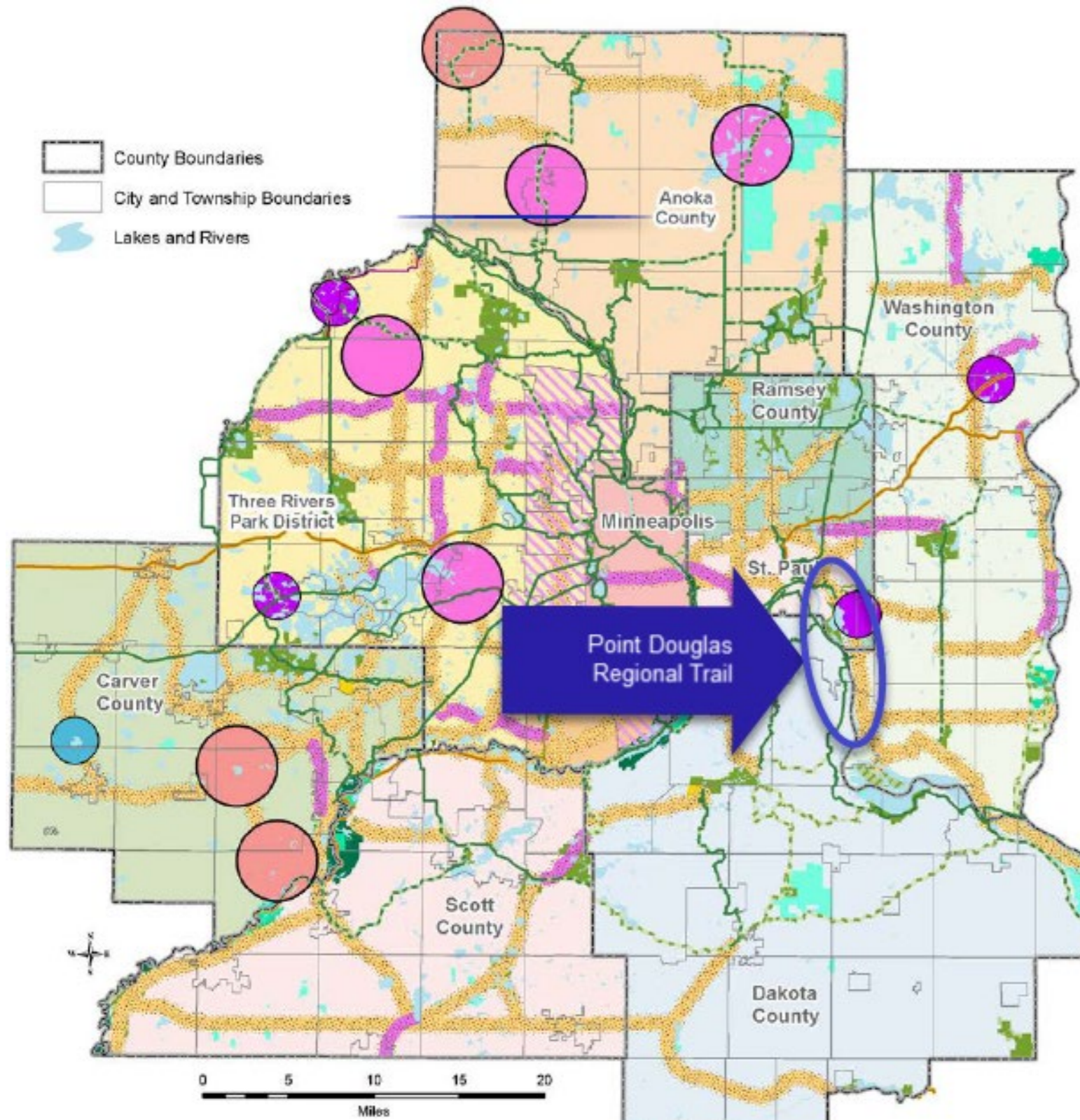
March 4, 2022

Metropolitan Parks and Open Space Commission

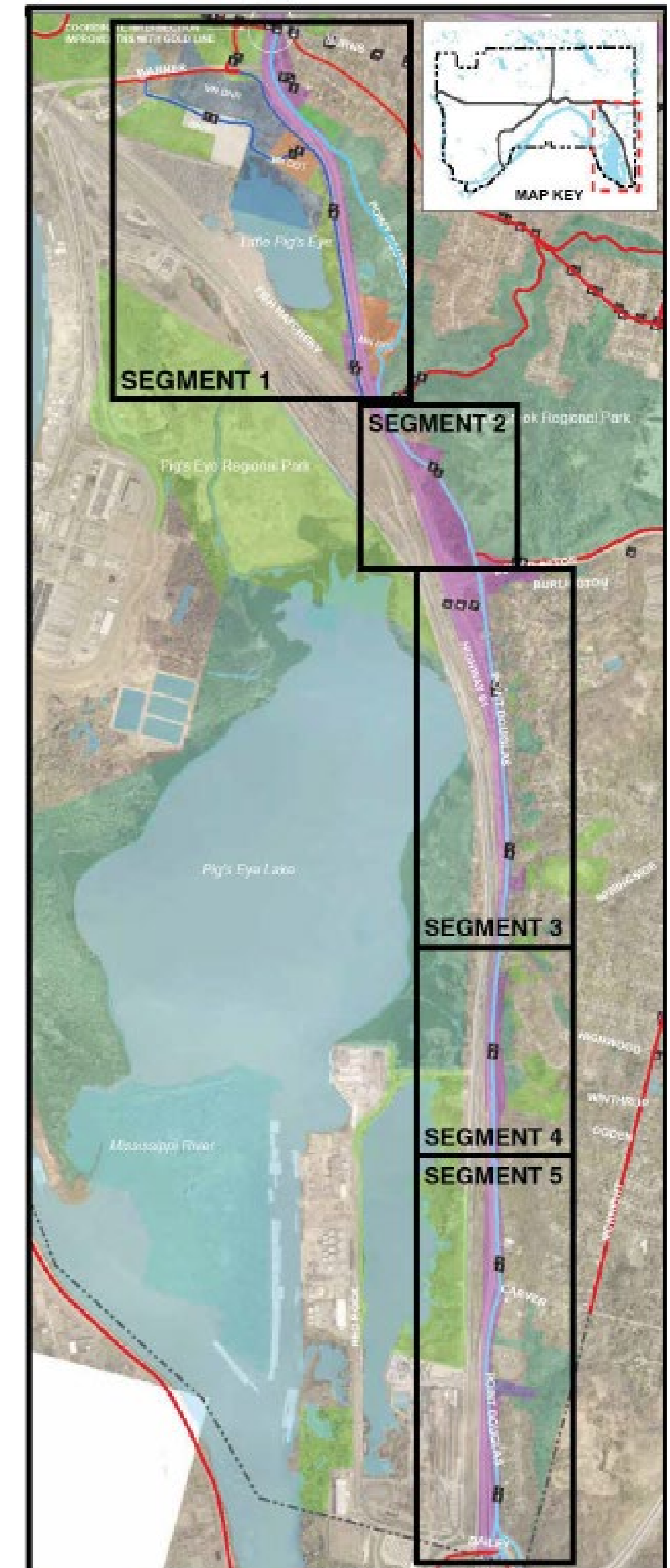
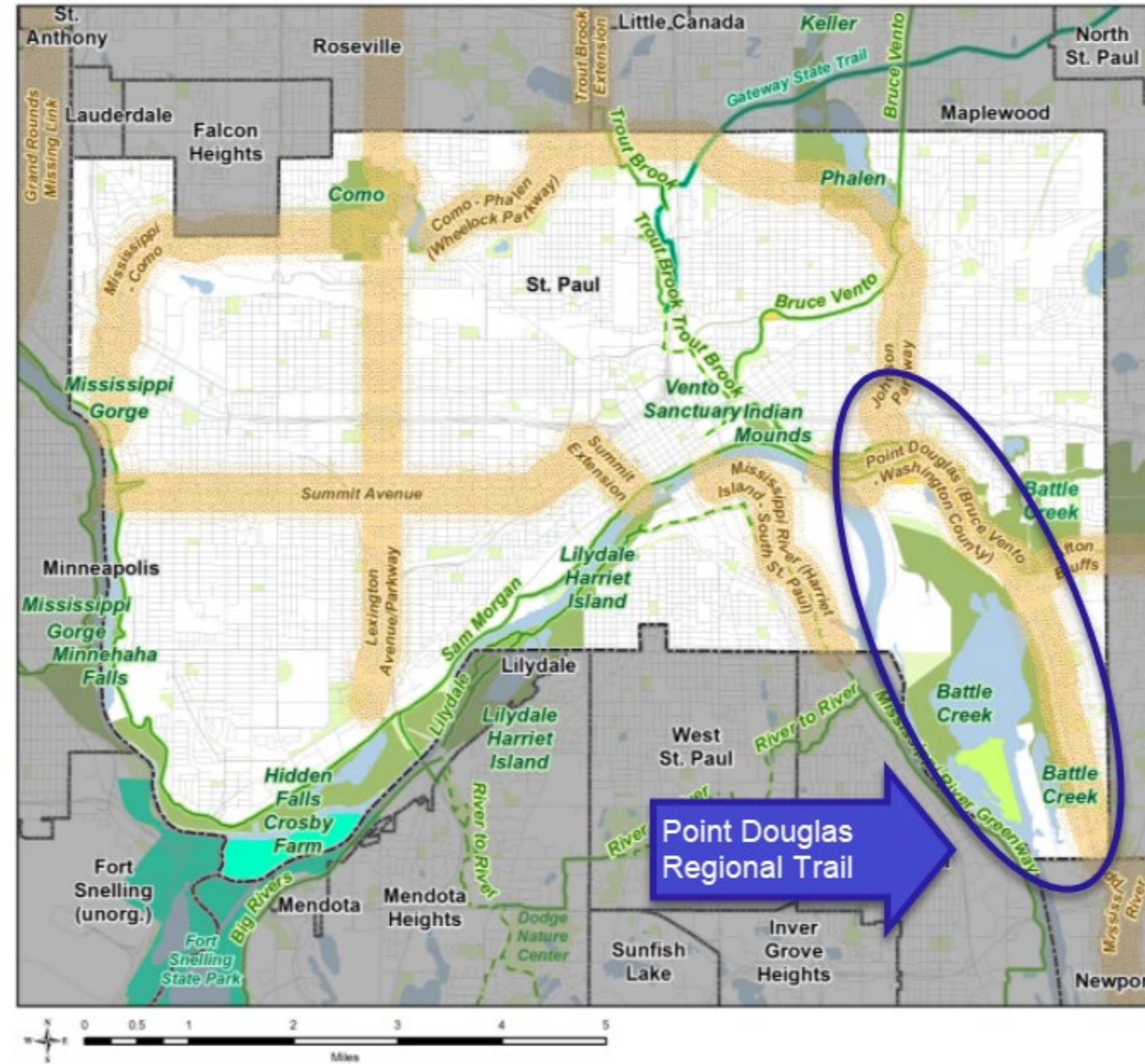




# Point Douglas Regional Trail



## Regional Parks System City of St. Paul, Ramsey County





# Public and Partner Engagement

## Public engagement methods

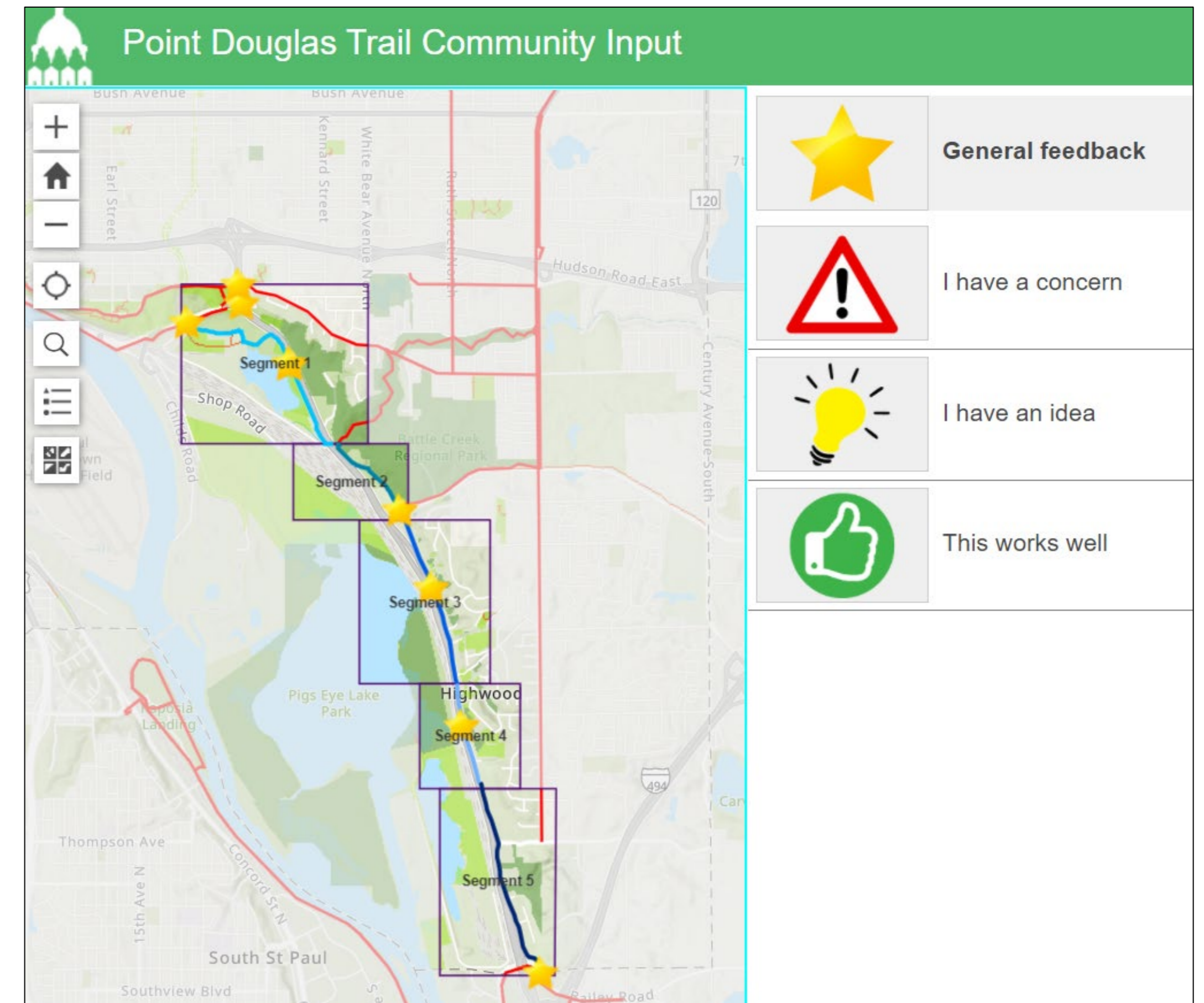
- Virtual presentations and focus group meetings, door-to-door flyer, and social media
- Design Advisory Committee of residents and stakeholders of District 1 and Ward 7

## Advice themes

- Maintenance: Winter snow removal
- Safety: Improve intersections
- Safety/Security: Add lighting
- Alignment: Locate trail on the west side of Point Douglas Road
- Signage: Improve wayfinding

## Partners

- DNR, BNSF, MnDOT, Ramsey and Washington County, and Ramsey Washington Metro Watershed District



An image of the web map used to collect community advice during the master plan process.



# Equity Analysis

## Project Data

- District 1 Community
- Somali community (Horn of Africa Community), teens (St. Paul Youth Commission) and students

## Public Engagement

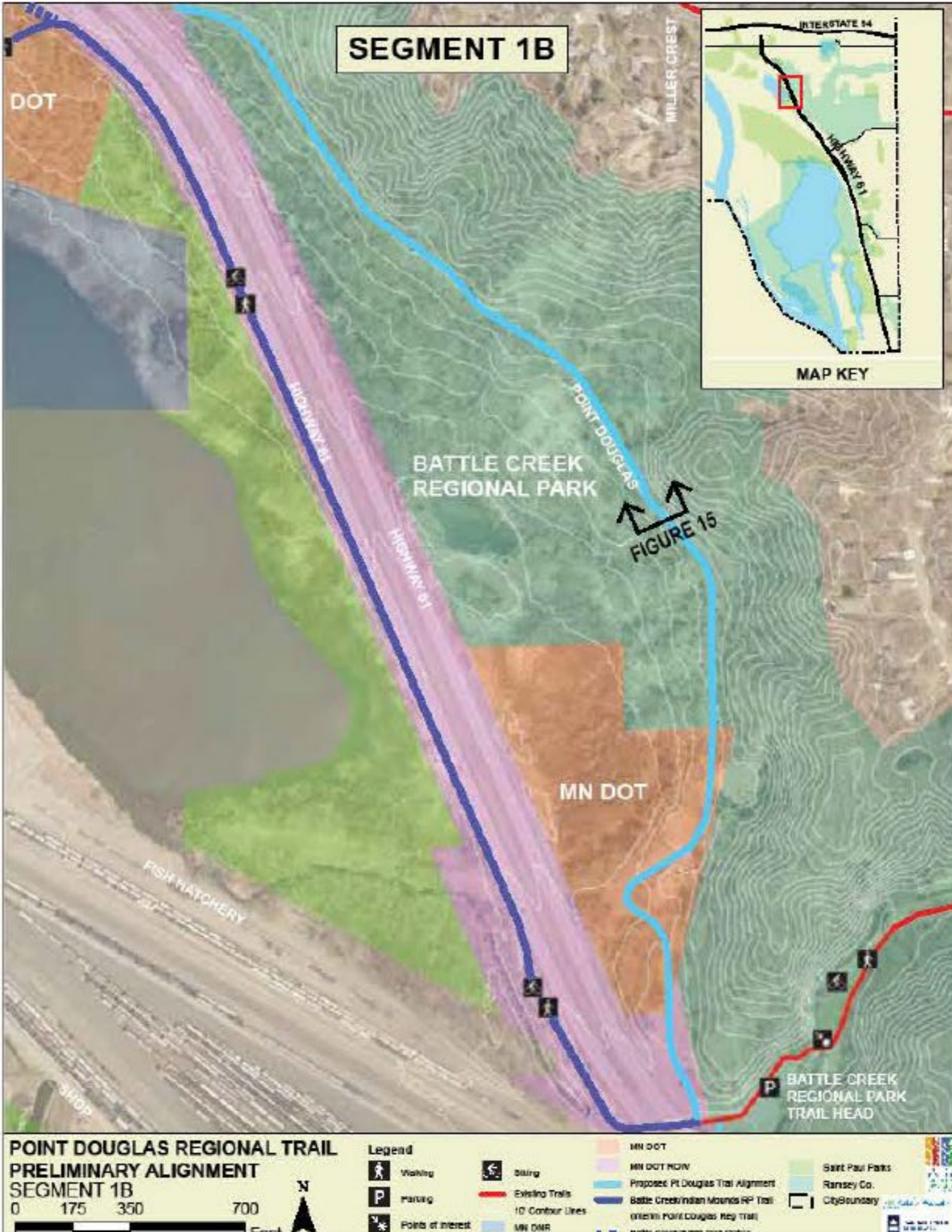
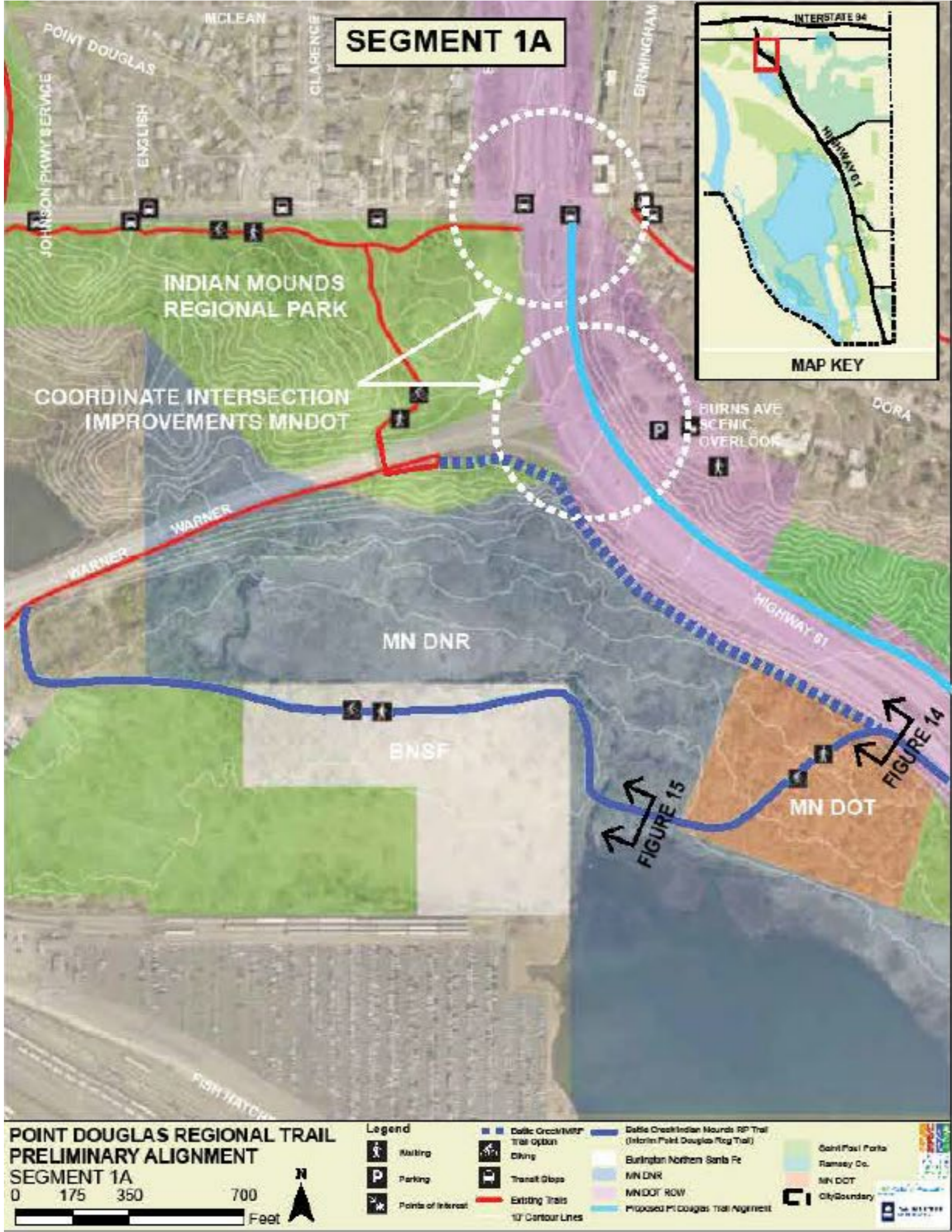
- Distributed translated surveys door-to-door and at Harding High School.
- Horn of Africa Organization Advice:
  - Many people didn't know about the trail.
- Harding High School Students:
  - Lack of trail identity and awareness
  - Site amenities needed

## Evaluation

- The master plan includes:
  - Multilingual wayfinding and cultural interpretation
  - Trail promotion as a shared public amenity,
  - Increased safety with lighting, intersection improvements, and a grade separated trail
  - Added comfort amenities
- Overall, the planning process helped to establish relationships and build awareness of the trail as a shared amenity.

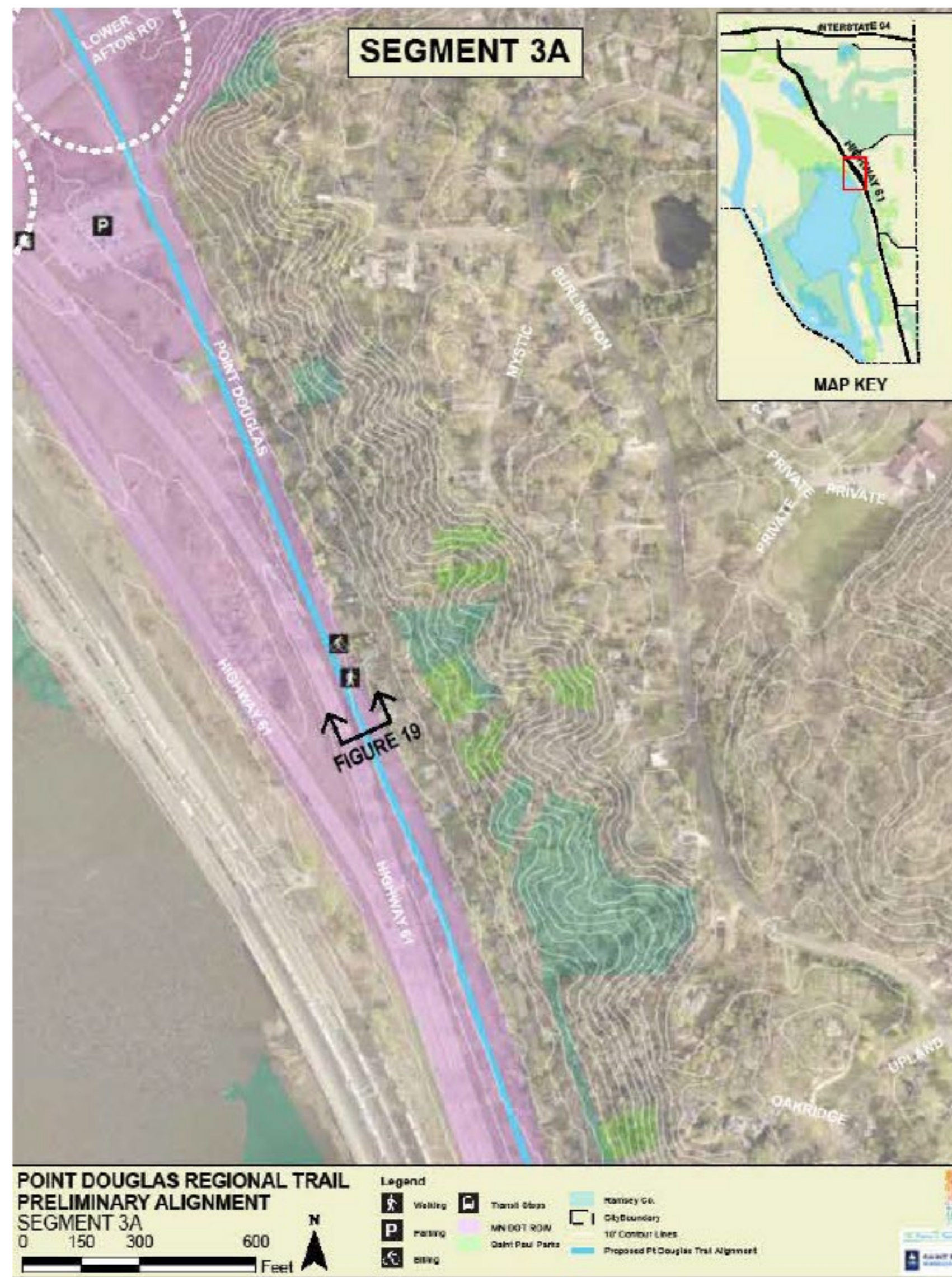
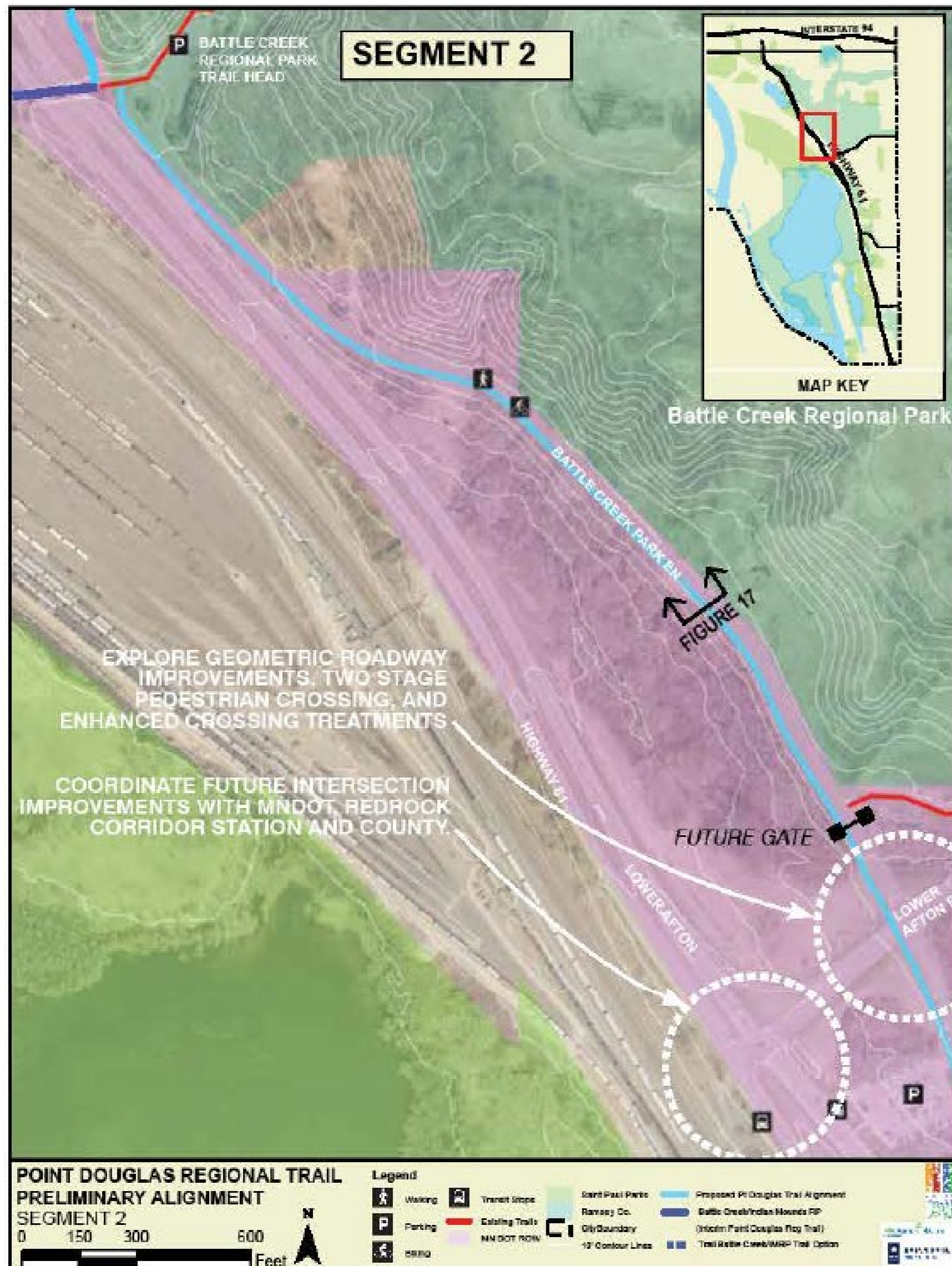


# Development Concept - Segment 1



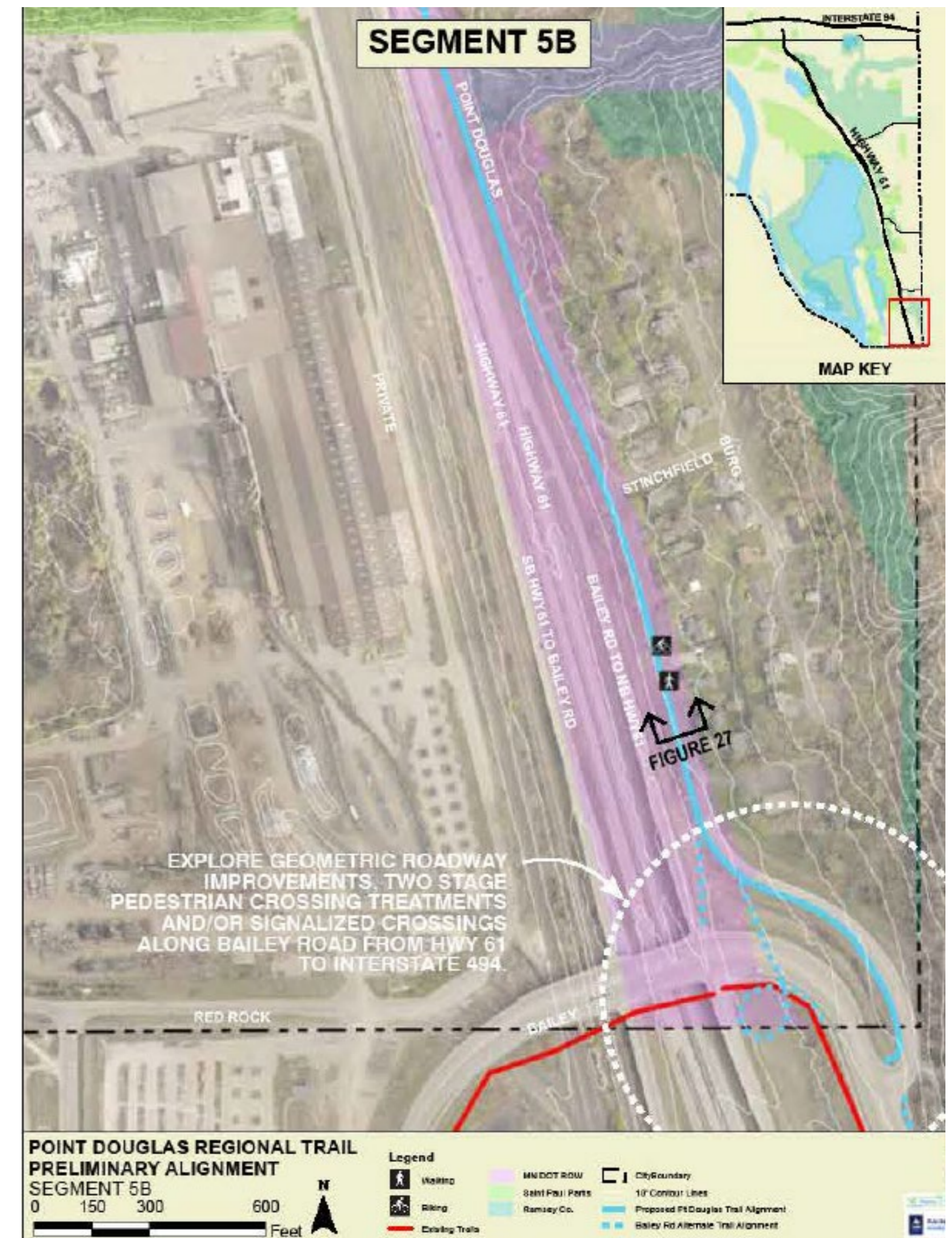


# Segments 2 and 3





# Segments 4 and 5





# Estimated Project Costs



- The total estimated cost to complete the Point Douglas Regional Trail is generally \$9,825,000 including \$278,625 in acquisitions and \$9,546,000 for development.
- The annual cost to maintain the is \$36,800.

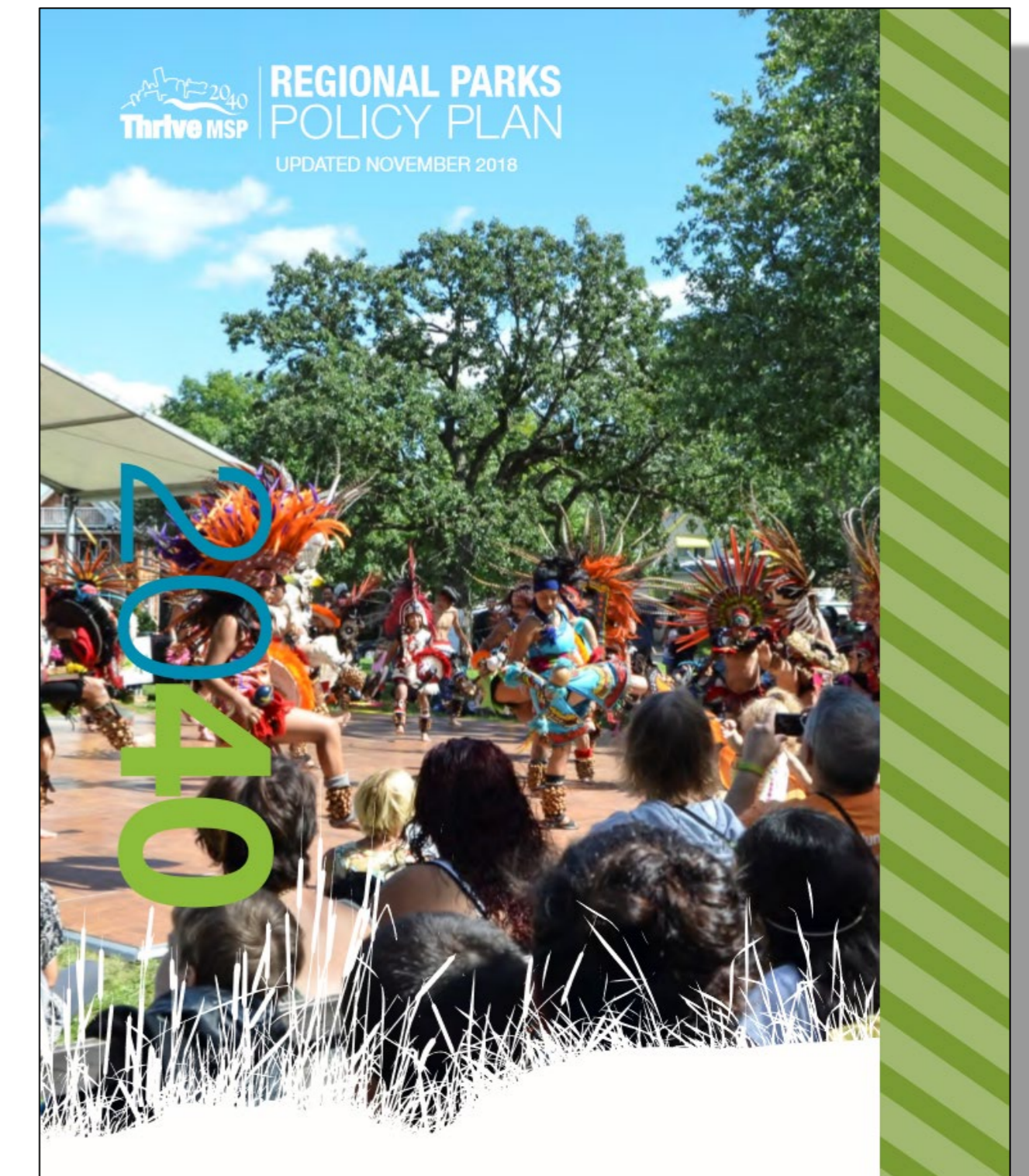
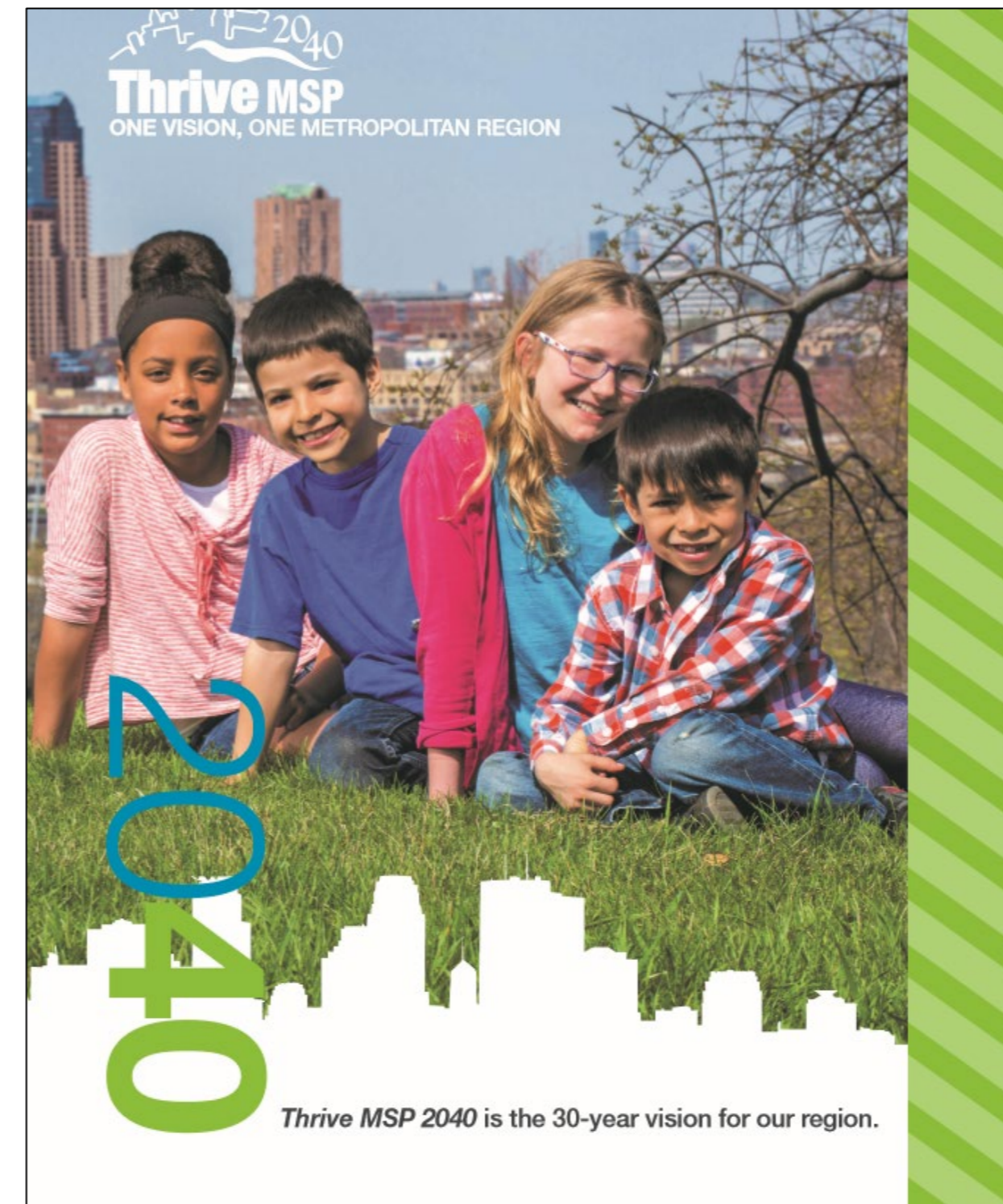
An image of what the trail will look like for Segment 3.



# Rationale for Proposed Action

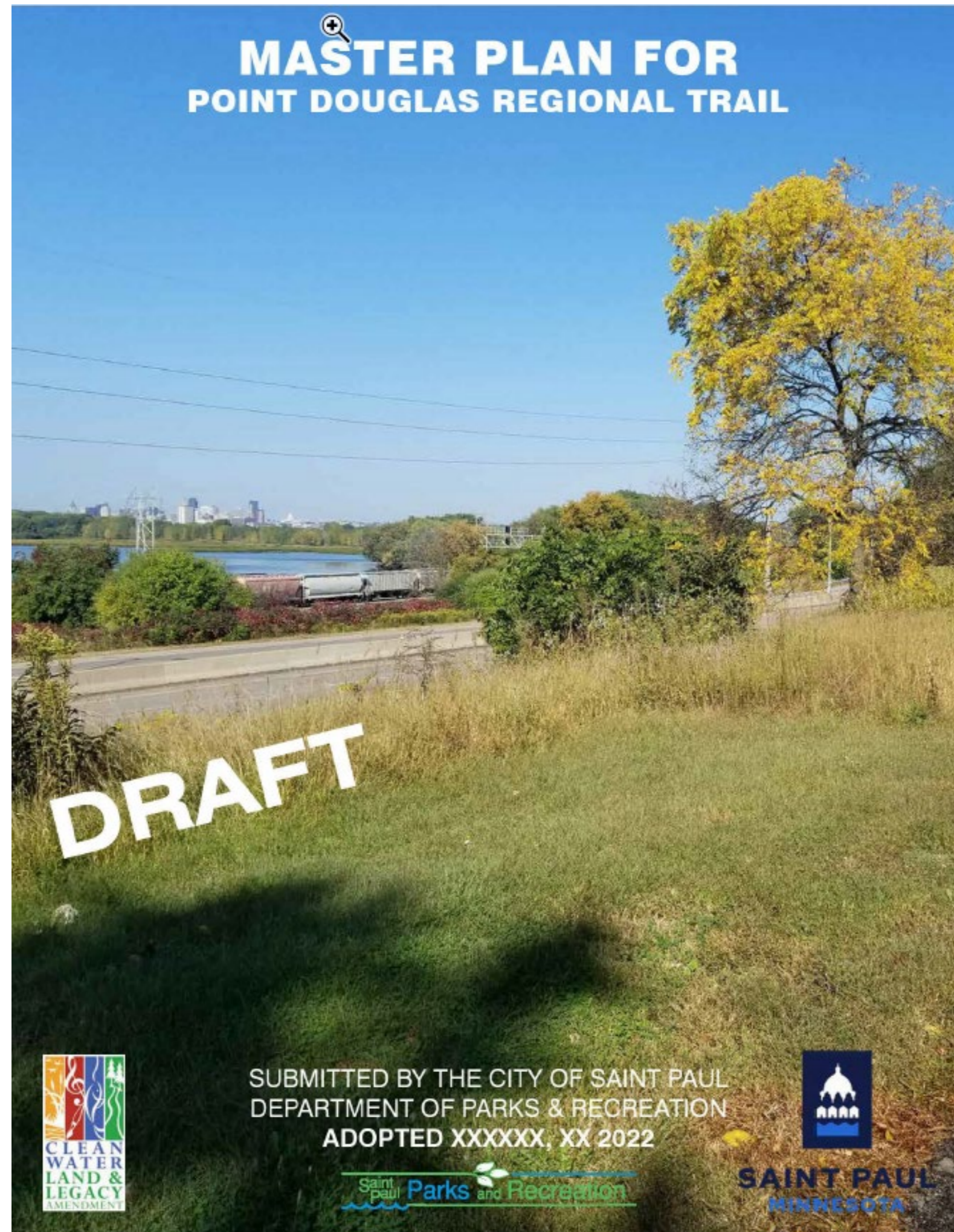
The Point Douglas Regional Trail Master Plan is consistent with the requirements of the:

- *2040 Regional Parks Policy Plan*
  - Planning Strategy 1
- Other Council policies and systems





# Proposed Action



That the Metropolitan Council:

1. Approve the Point Douglas Regional Trail Master Plan.
2. Require Saint Paul, prior to initiating any new development of the regional trail corridor, to send preliminary plans to the Metropolitan Council's Environmental Services Interceptor Engineering Assistant Manager.

Point Douglas Regional Trail Master Plan Cover



# Thank you

Tracey Kinney, Senior Planner  
Community Development Division  
[Tracey.kinney@metc.state.mn.us](mailto:Tracey.kinney@metc.state.mn.us)  
651-602-1029

