



**Middle St. Croix Valley Regional Trail Long-Range  
Plan and St. Croix Valley Regional Trail Long-Range  
Plan Amendment, Washington County**

**Business Item 2023-296**

**Metropolitan Parks and Open Space Commission**

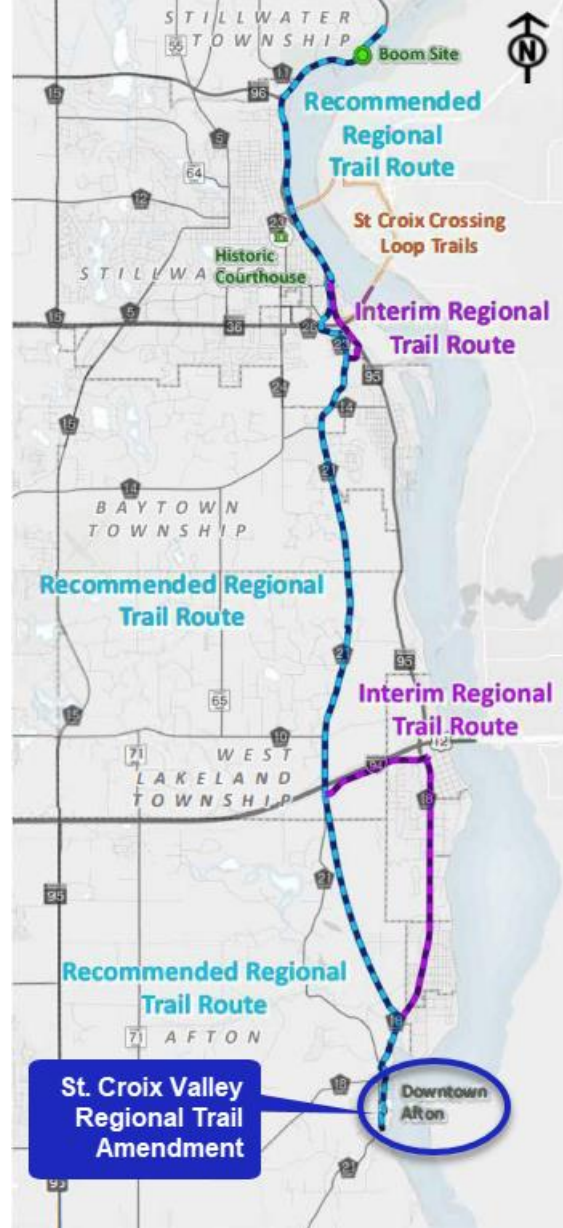
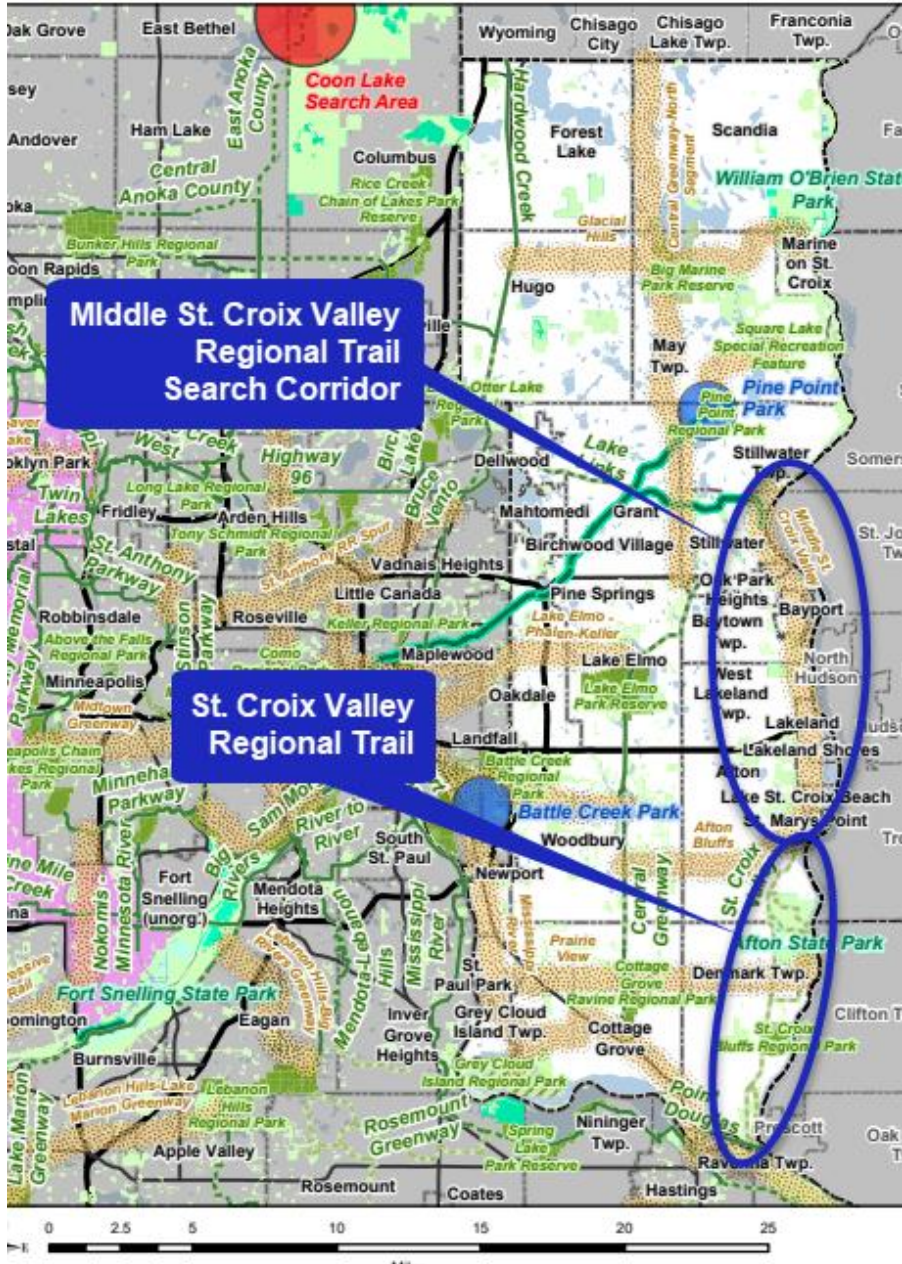
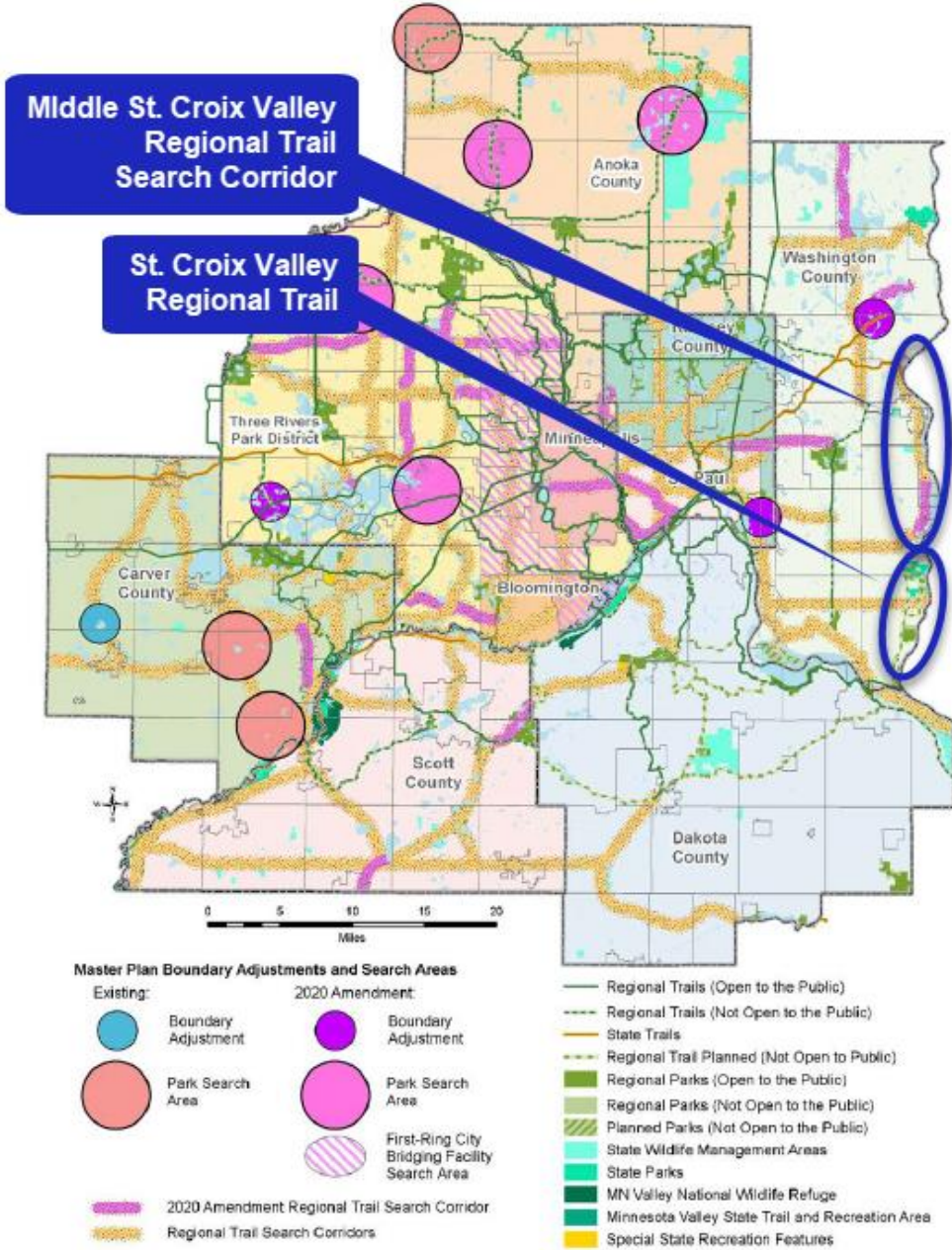


**METROPOLITAN  
C O U N C I L**

**December 7, 2023**

**Tracey Kinney, Senior Planner**

# Middle St. Croix Valley Regional Trail Long-Range Plan and St. Croix Valley Regional Trail Amendment



# Equity Analysis

## Focused Engagements:

- **Youth:** Washington County hosted two Learn to Ride events, which provided an opportunity to engage with kids and parents who have barriers to owning bicycles and building skills.
- **Women:** Washington County hosted an event and listening session with the She Ascends Hiking Group for in-depth, one-on-one conversations and specific recommendations related to how women experience and use trails.

## Advice Shaped the Plan:

- **Safety, Accessibility and Comfort Improvements:**
  - Provide high quality trail amenities, minimize conflict between trail users, and connect to transit.
- **Connectivity:** Connect to regional/local trails and paths, parks/open spaces, historically, culturally and naturally significant sites.
- **Natural Resources:** Provide river views and experiences through multiple habitats.
- **Equity:** Provide a welcoming trail experience.



Plan engagement events.

# Public and Partner Engagement



## Public Engagement Themes

- Highlight local parks and destinations.
- Make connections between communities.
- Explore trail "loop" opportunities/connections.
- Provide views of the river where feasible.
- Foster stewardship of area natural resources.
- Widen the trail to accommodate range of users.
- Provide clear wayfinding and high quality/more frequent amenities.

## Partner Engagement

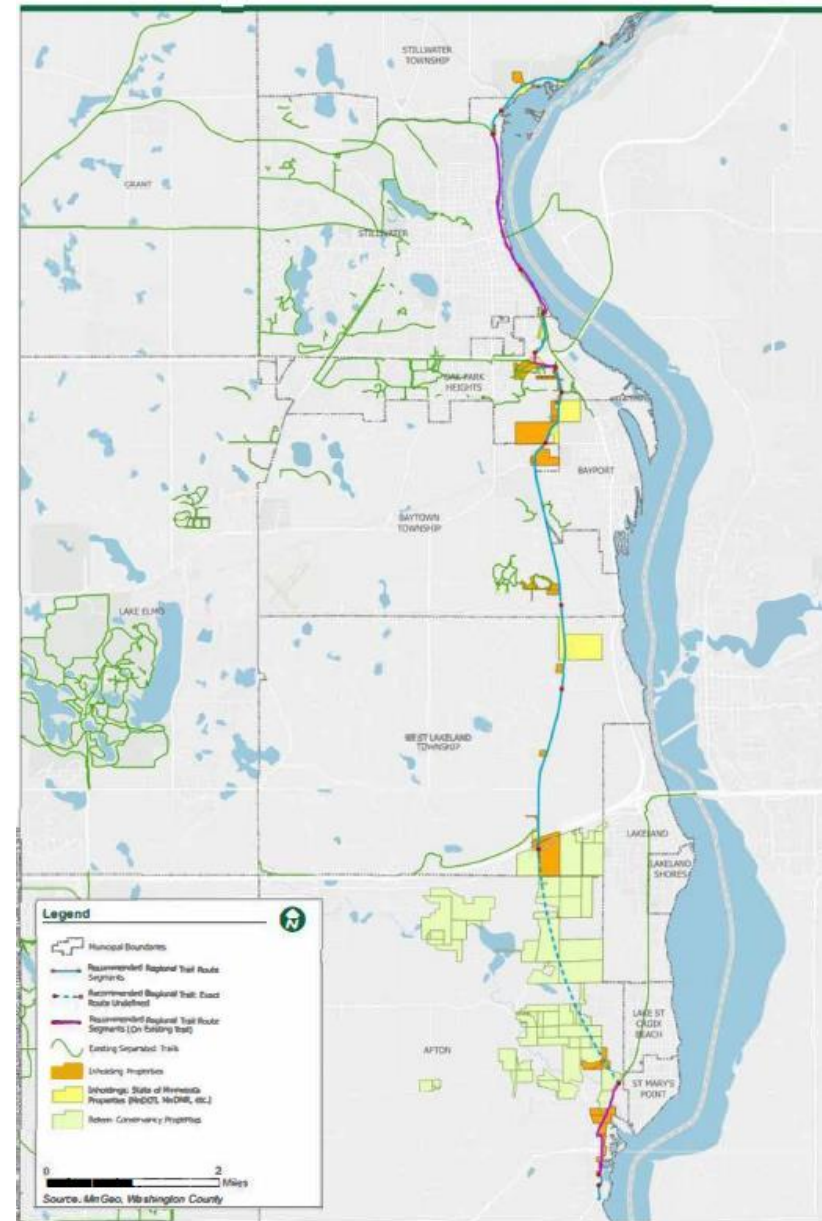
**Agencies Engaged:** Stillwater Township, City of Afton, City of Stillwater, Belwin Conservancy, City of Oak Park Heights, Washington Conservation District, City of Bayport, Middle St. Croix Watershed, and more.

*Eastern Washington County.*

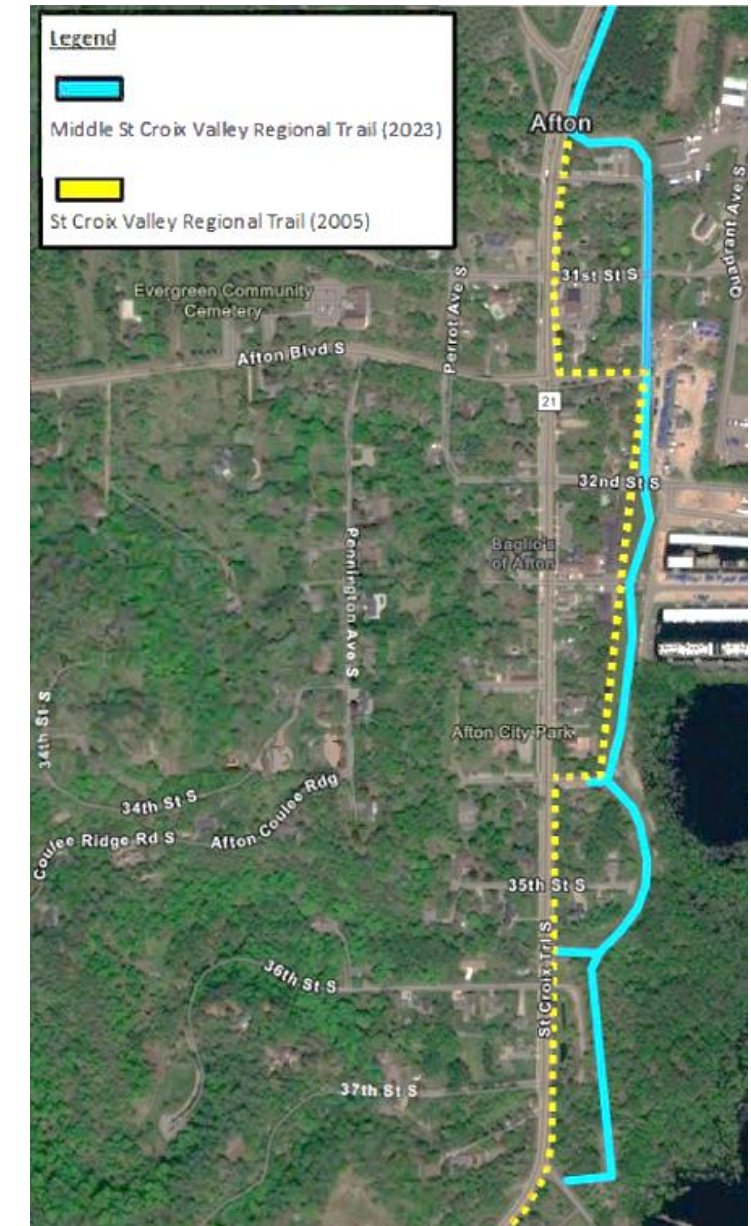
# Boundaries and Acquisitions

## Regional Trail Boundary

- Two-way trail within one side of the road right-of-way
- Joint segment with the Brown's Creek State Trail
- Alignment through the Belwin Conservatory.
- The 0.80-mile realignment of the St. Croix Valley Regional Trail

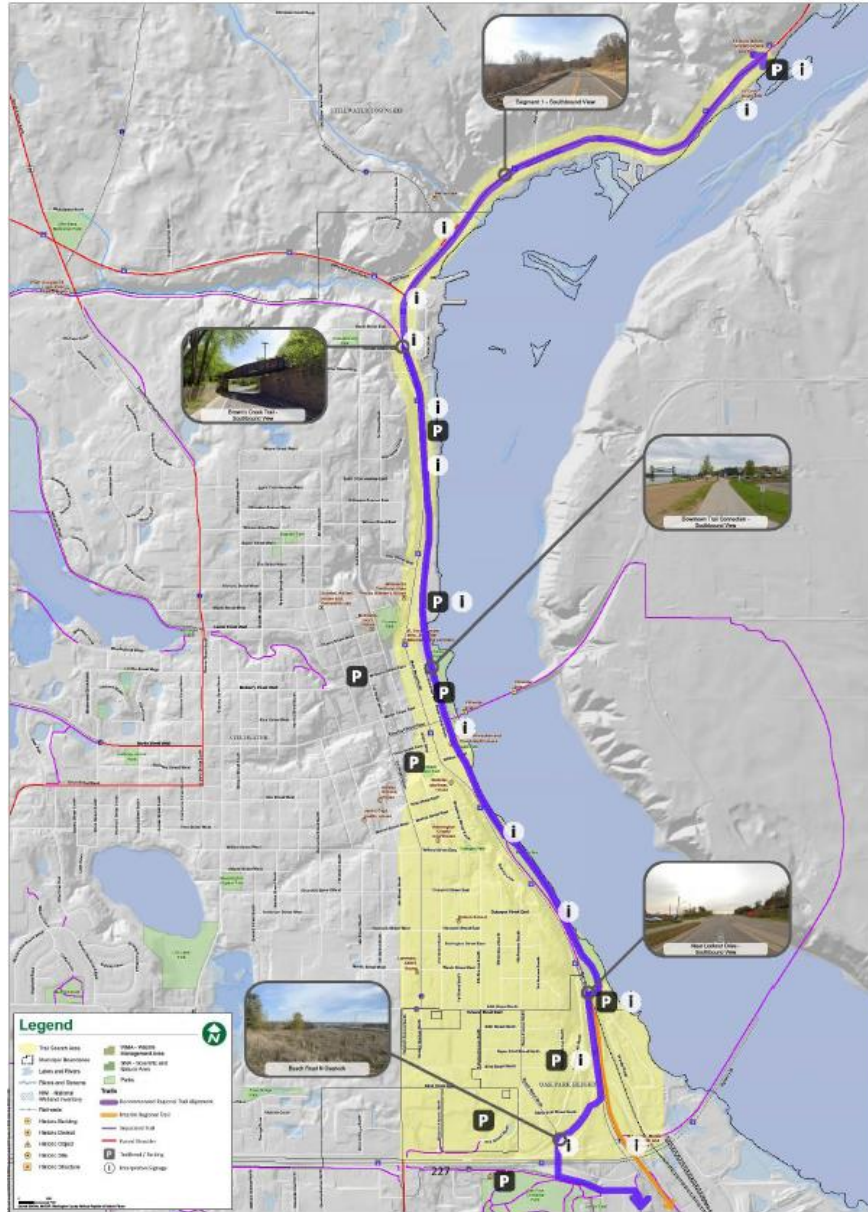


Boundaries and Acquisitions

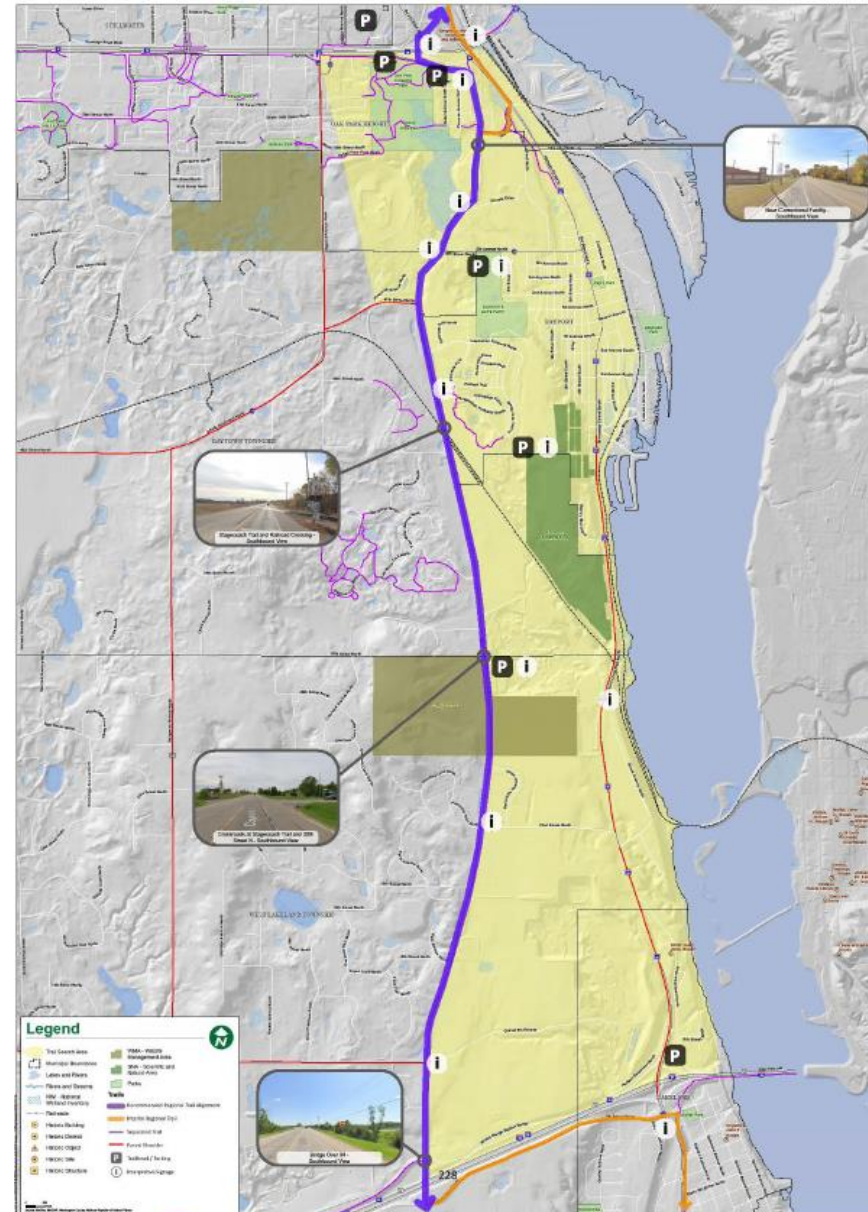


St. Croix Valley Trail Realignment

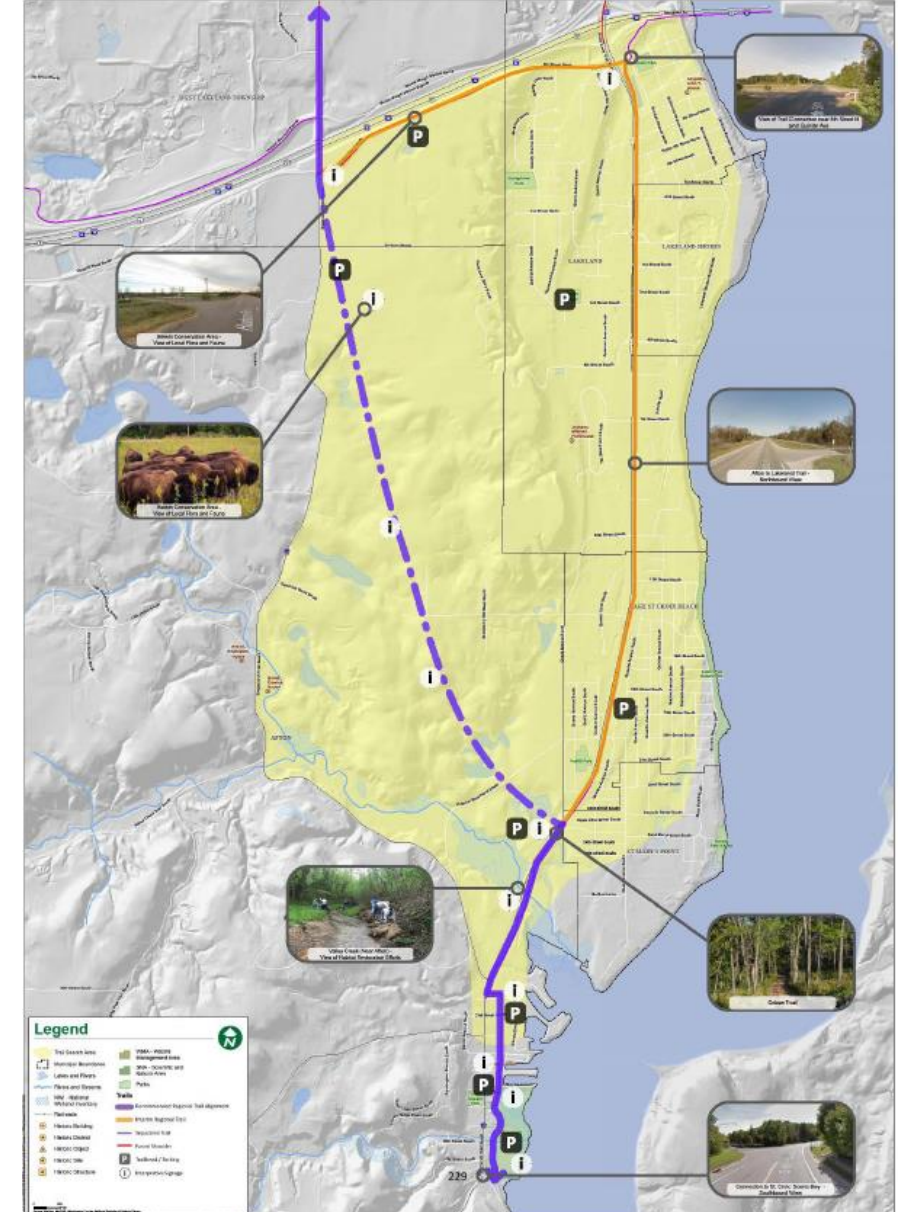
# Development Concept – Trail Segments



Segment 1



Segment 2



Segment 3

# Rationale for Proposed Action

The trail plans are consistent with the requirements of the:

- 2040 Regional Parks Policy Plan
  - Chapter 5, Planning, Strategy 1
  - Other Council policies



# Costs



Preferred Trail: \$13,136,350 total cost

- \$11,700,000 for development
- \$1,429,250 for acquisitions

Interim Trail: \$2,018,600 total cost

- \$1,623,300 for development
- \$395,300 for acquisitions

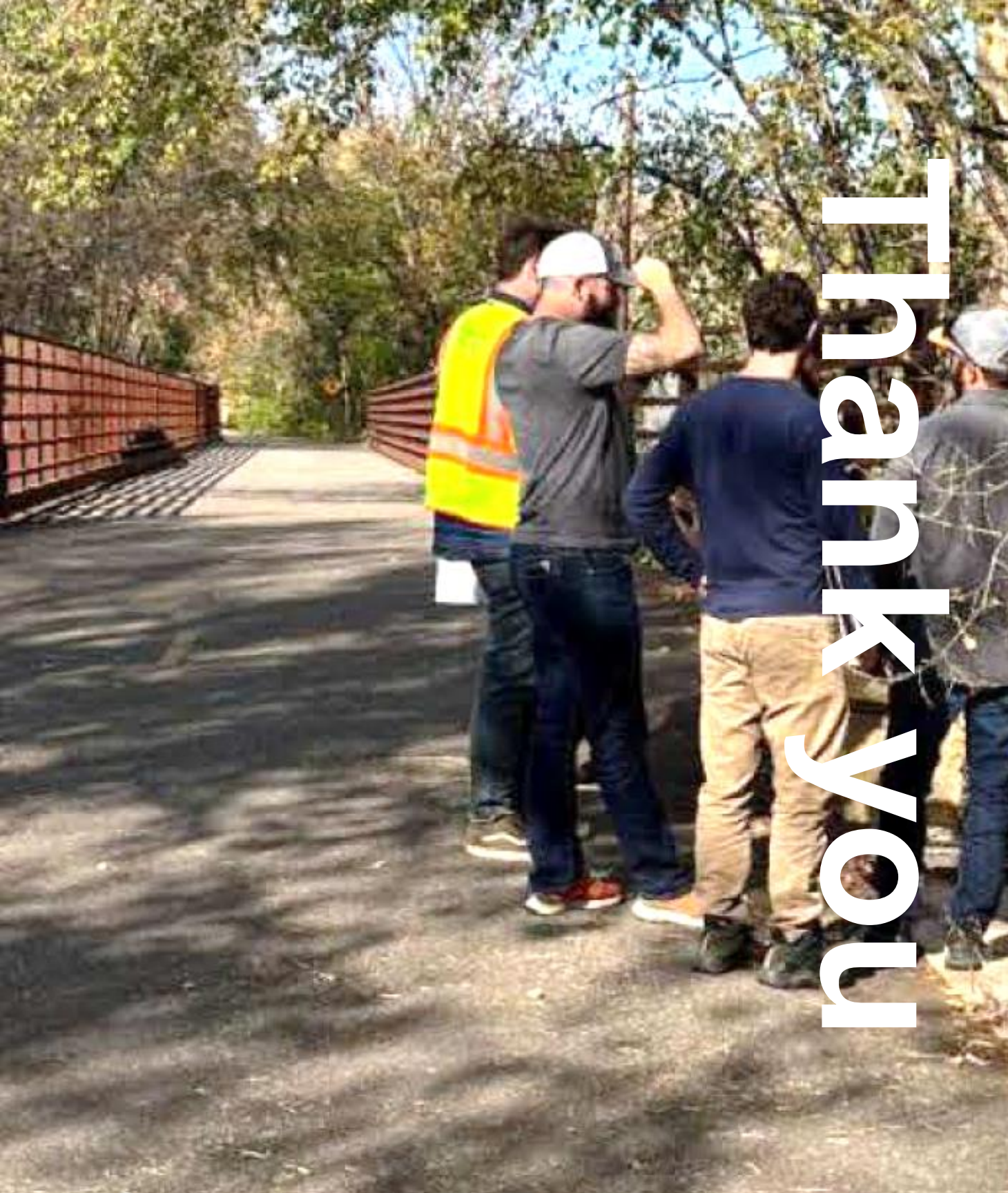
Operations and maintenance: \$89,200 annually.



# Proposed Action

That the Metropolitan Council:

1. Approve the Middle St. Croix Valley Regional Trail Long-Range Plan.
2. Approve the St. Croix Valley Regional Trail Long-Range Plan Amendment.
3. Require Washington County, prior to initiating any construction, to send preliminary plans to the Metropolitan Council Environmental Services Interceptor Engineering Assistant Manager.
4. Request that the County send to the Council for the Council's records the Joint Powers Agreement between the County and Department of Natural Resources for use of the Brown's Creek State Trail once it has been executed.
5. Advise the County to consider implementing the recommendations for solar resources and transportation in the Advisory Comments section of the business item.



Thank you!

**Tracey Kinney**

Senior Planner, Community Development



*Project team reviewing potential implementation opportunities/constraints along Brown's Creek State Trail.*