



# Summit Avenue Regional Trail Long Range Plan, City of Saint Paul

Business Item 2023-146

Metropolitan Parks and Open Space Commission

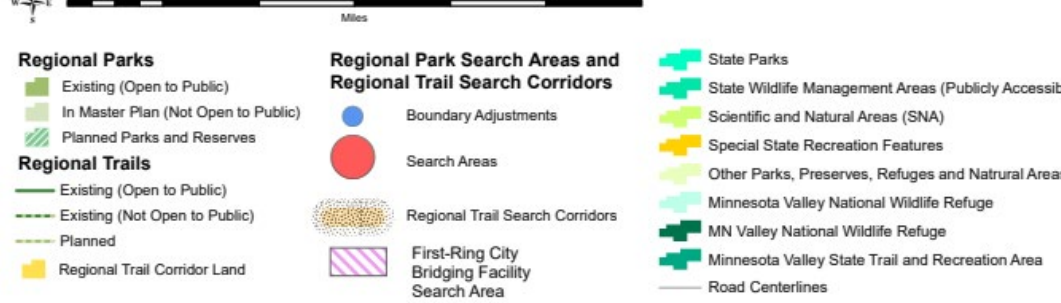
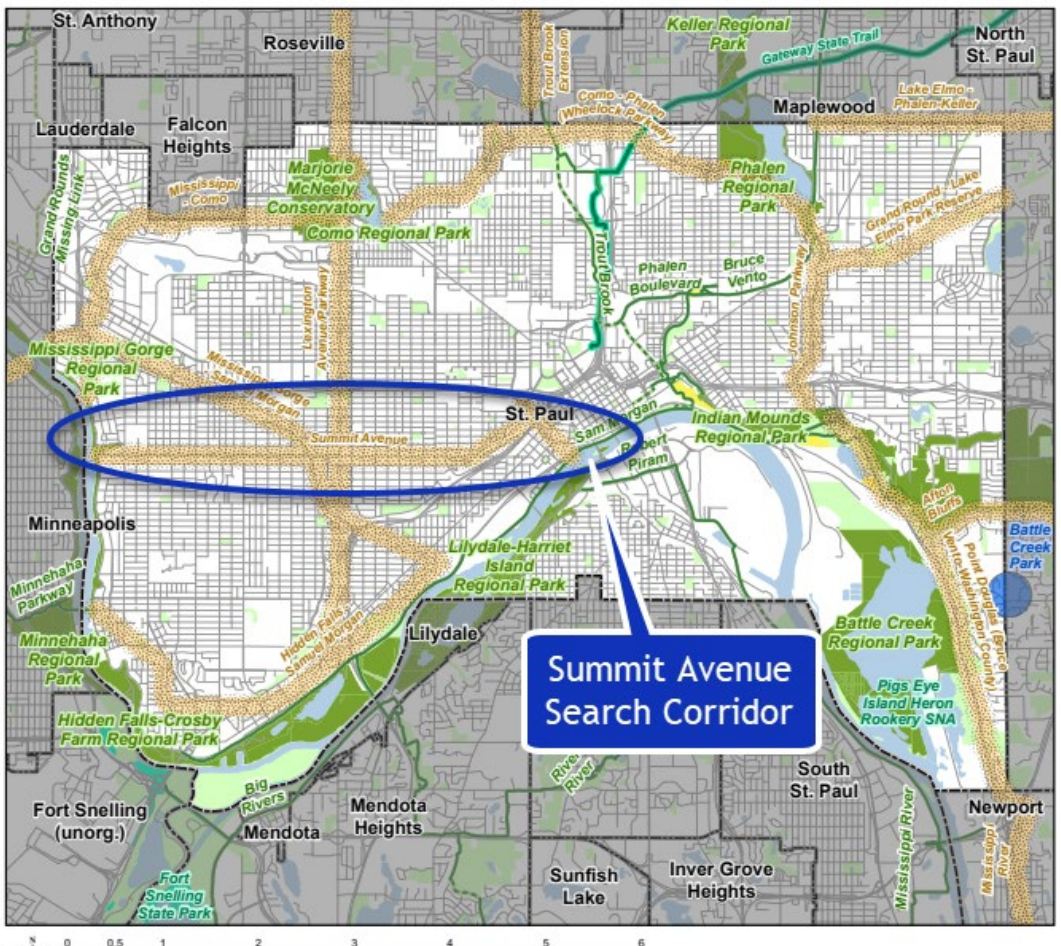
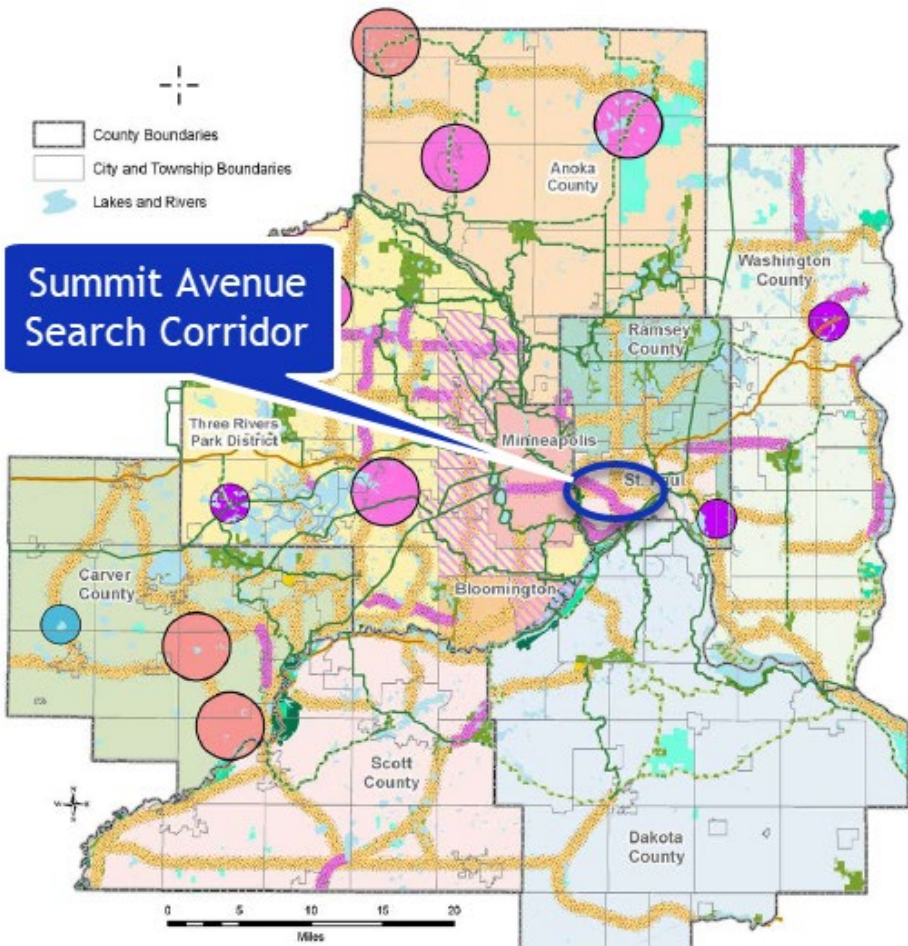


• July 13, 2023

Tracey Kinney, Senior Planner



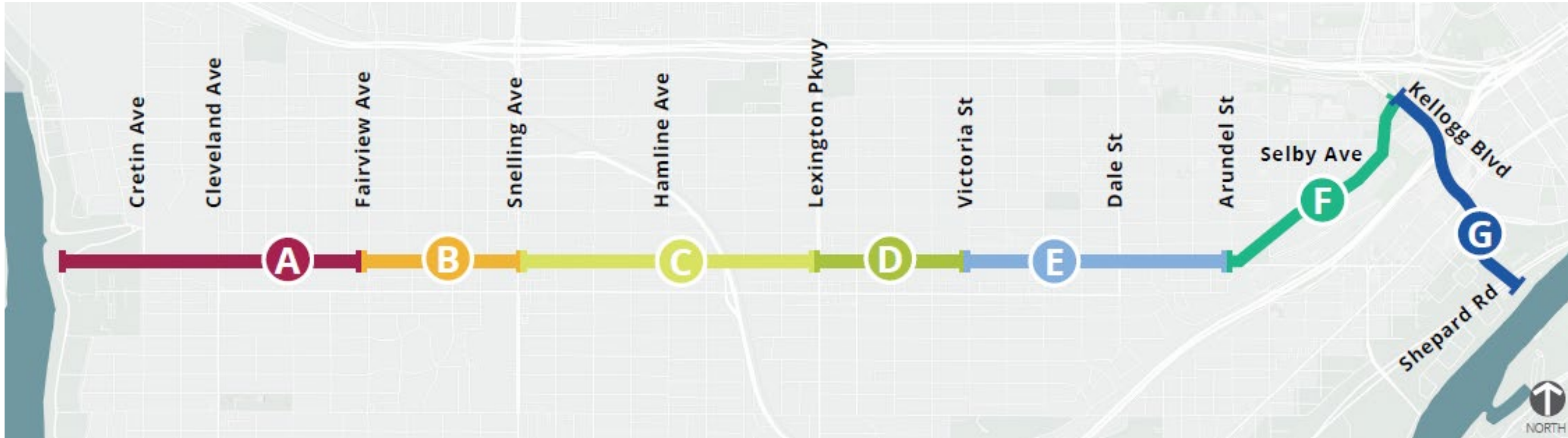
# Summit Avenue Regional Trail Long Range Plan



A view of the existing bike lane on Summit Avenue.



# Trail Alignment and Location



## Segments A-F:

- 4.5 miles
- Summit Avenue from the Mississippi Gorge Regional Park to Kellogg Boulevard

## Segments G:

- 0.75 miles
- Kellogg Boulevard/Eagle Parkway to Samuel Morgan Regional Trail at Shepard Road and the Mississippi River

# Equity Analysis

## Focused Engagements:

- **Accessibility Coordination:** Saint Paul's Adaptive Recreation program and the Mayor's Advisory Council.
- **Community Focused Events:** Neighborhood families and youth - Safe Summer Nights, Right Track Summer Celebration, Little Africa Festival 2022, and Downtown Saint Paul Mobility Mingle
- **Schools, Youth, Families:** Safe Routes to School and Saint Paul Youth Commission

## Advice Shaped the Plan:

- **Accessibility:** Increase access by creating physical separation between vehicles and bicyclists.
- **Safety and Comfort:** Increase safety and comfort by providing separation from vehicle traffic and separation between bicyclists and pedestrians.
- **Diversity and Inclusion:** Develop future design and engineering processes to integrate community organizations early and often that can lead, inform, and shape a diverse representation of public art and cultural interpretation throughout the corridor.



*Plan engagement events.*



# Public and Partner Engagement



## Public Engagement

- **Engagement Activities:** In-person events, virtual drop-in sessions, Design and Technical Advisory Committee meetings, and a dedicated engagement website.
- **Key Themes** during the 90% draft plan engagement:
  - Safety
  - No change
  - Greenspace
  - Roadway
  - History

## Partner Engagement

- **Agencies Engaged:** Ramsey County Public Works, Minnesota Department of Transportation, and State Historic Preservation Office through a Technical Advisory Committee.
- **Key Theme:** preferred one-way, curb separated facilities between the parking lane and the boulevard.

Plan engagement events.



# Development Concept - Approach



**Overall Concept:** A one-way facility on each side of the Summit Avenue Parkway.

- *The preferred approach by both community members and by technical professionals as the safest option for this corridor.*

**Plan Extras:** Guidelines for trail parking, intersections, medians, connections to other park land and trails, driveway conditions, trash pick-up, wayfinding, trail amenities, furnishings, and public art.

**Tree Preservation:** Framework for pre-construction, during construction and post construction activities.

- *One-to-one tree replacement guideline for trees that need to be replaced.*

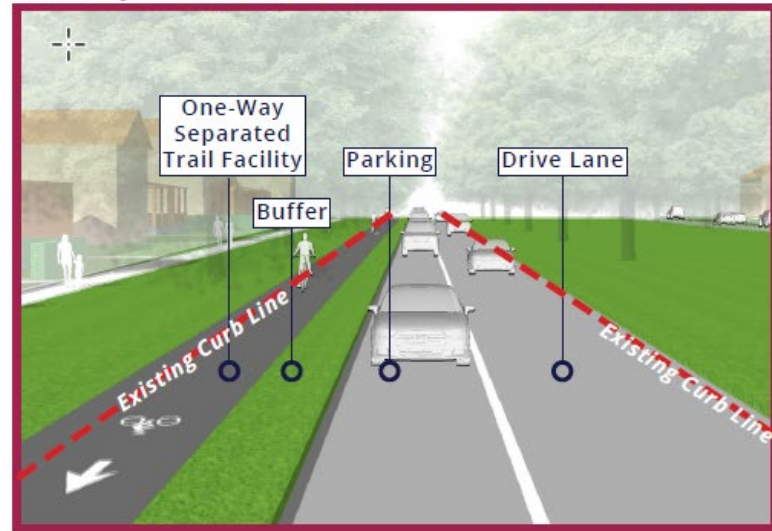
*The tree canopy on Summit Avenue.*



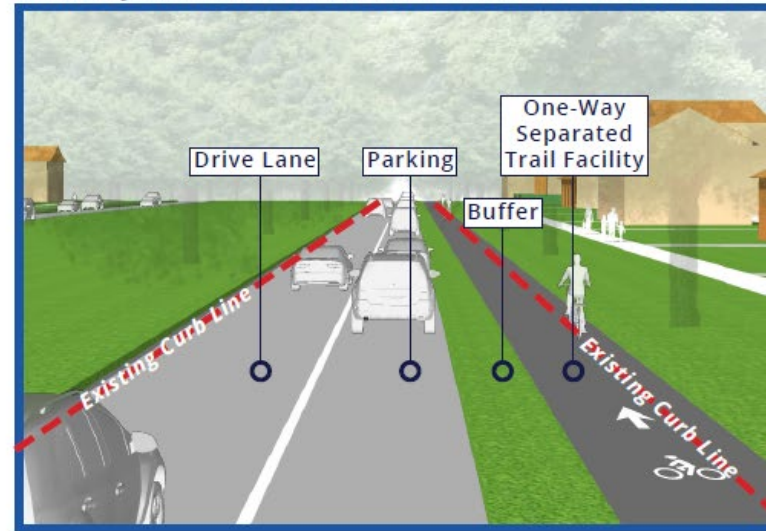
# Development Concept – Trail Segments

## Segments A&C

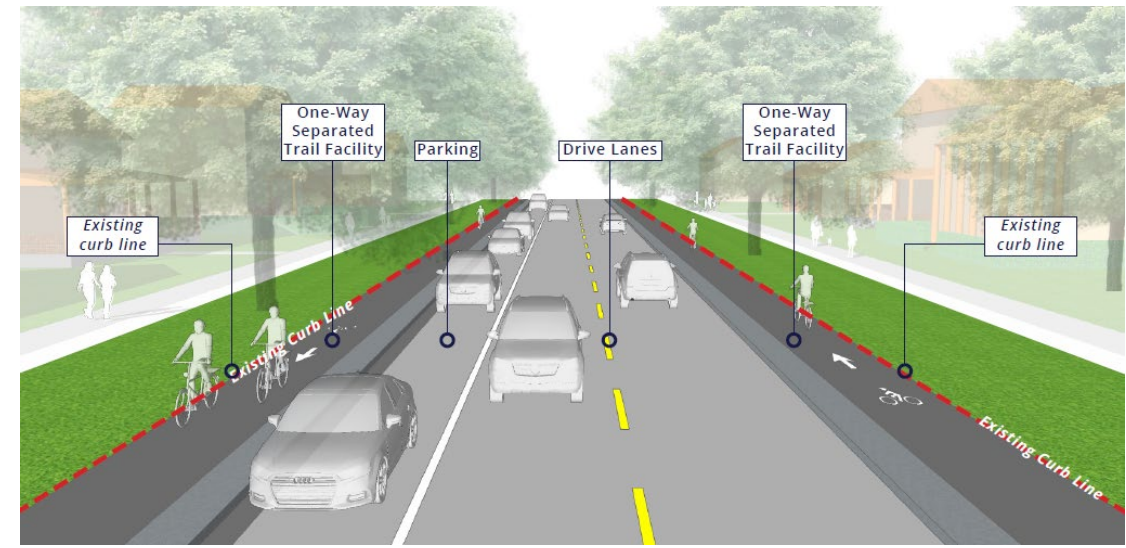
Roadway on south side of Summit Avenue - Eastbound



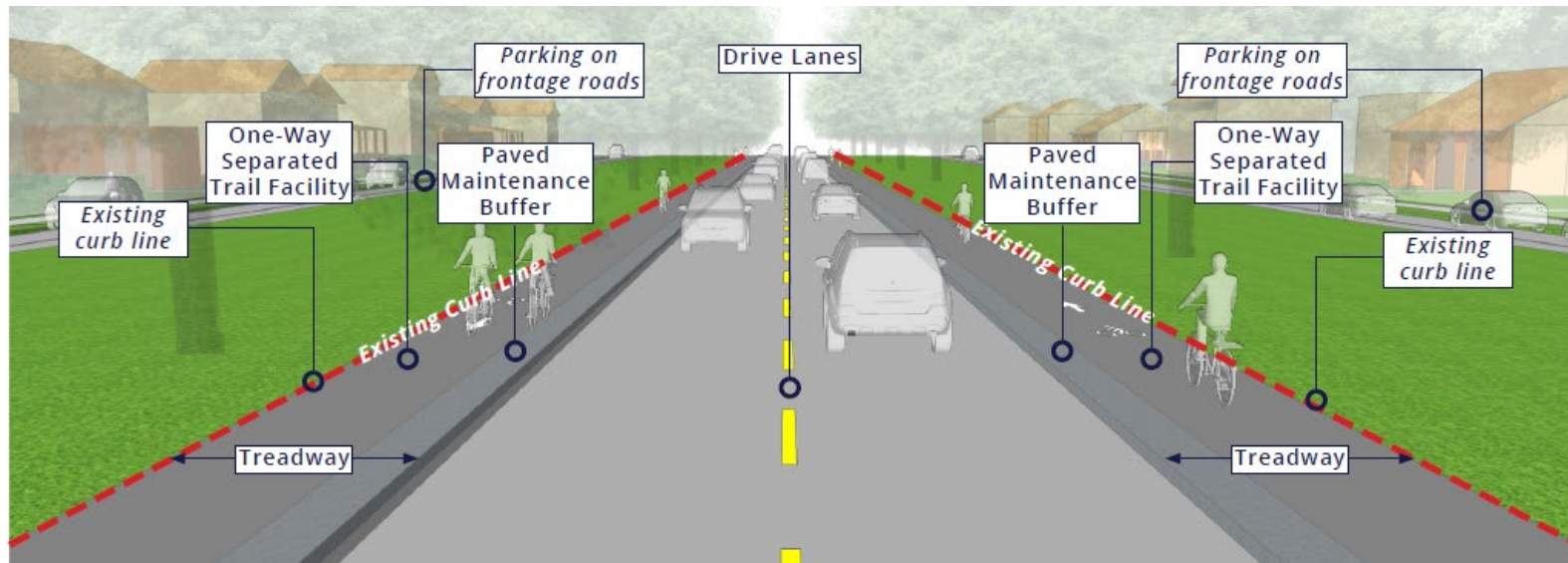
Roadway on north side of Summit Avenue - Westbound



## Segments D, E, and F



## Segment B



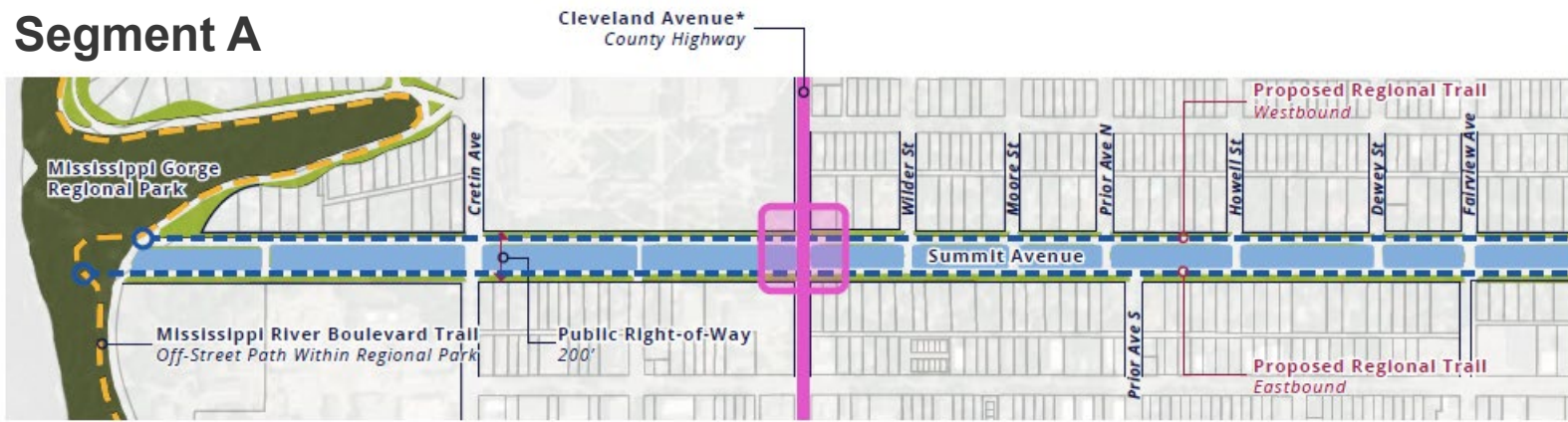
## Segment G



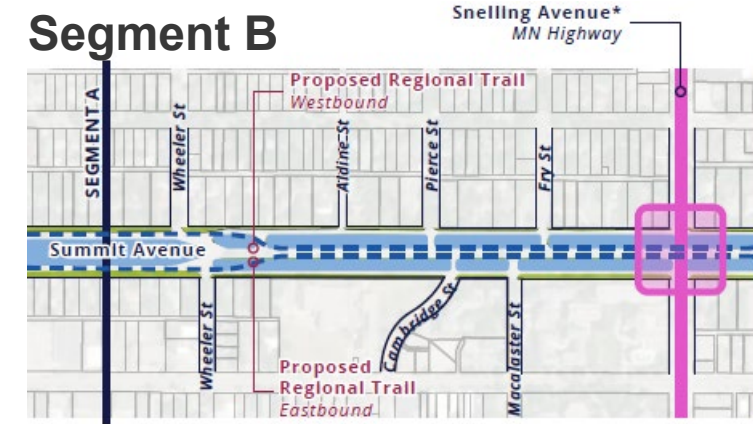


# Boundaries – Segments A-E

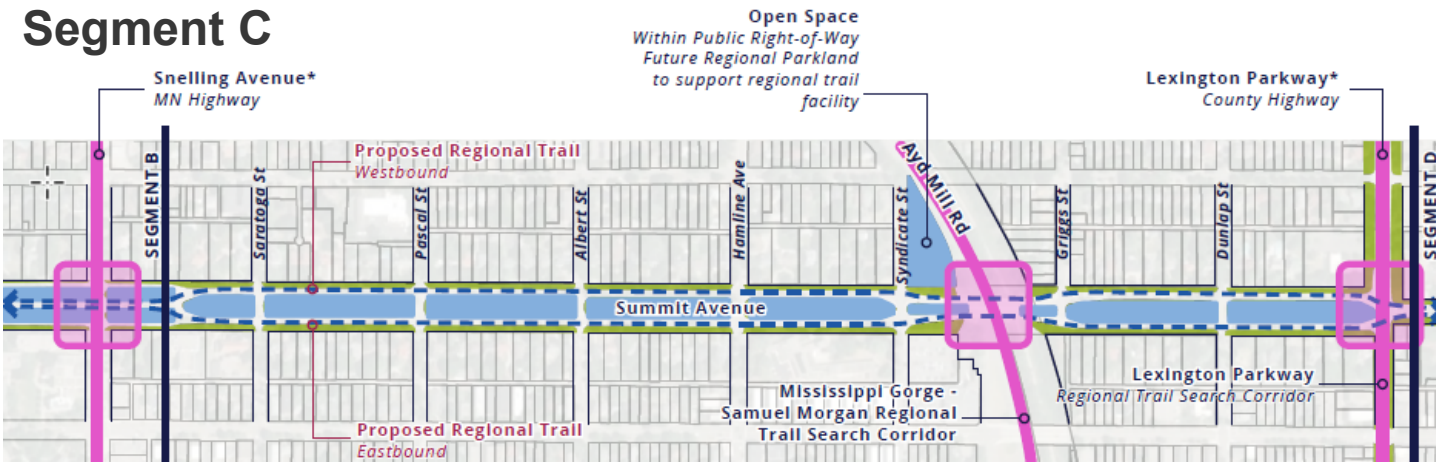
Segment A



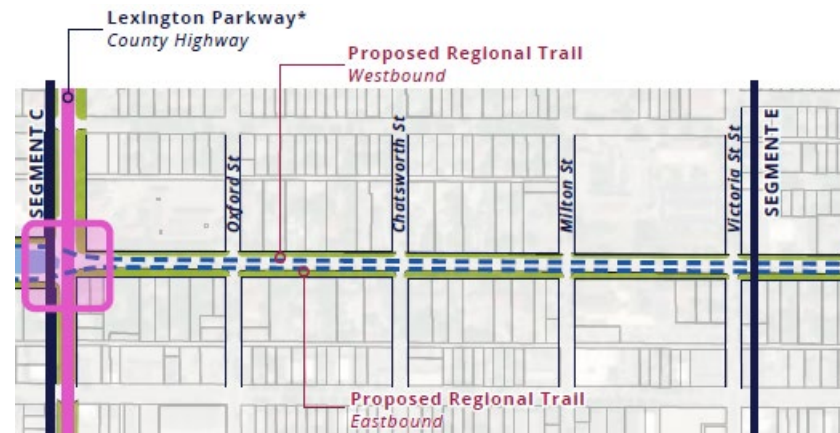
Segment B



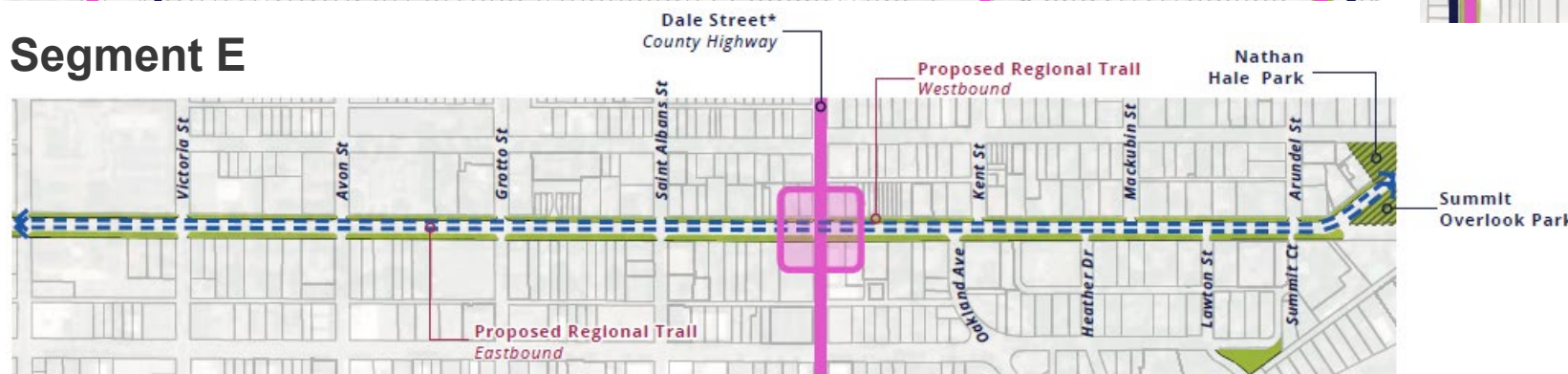
Segment C



Segment D



Segment E



**Legend**

-  Proposed Summit Avenue Regional Trail
-  Local Greenspace
-  Proposed Regional Trail Corridor Land
-  Regional Parkland
-  Regional Trail
-  Intersecting Road with Multiple Jurisdictions

**Regional Trail Boundary**

- Trail and maintenance buffer
- Central median, and service median Intersections
- Short Line Park

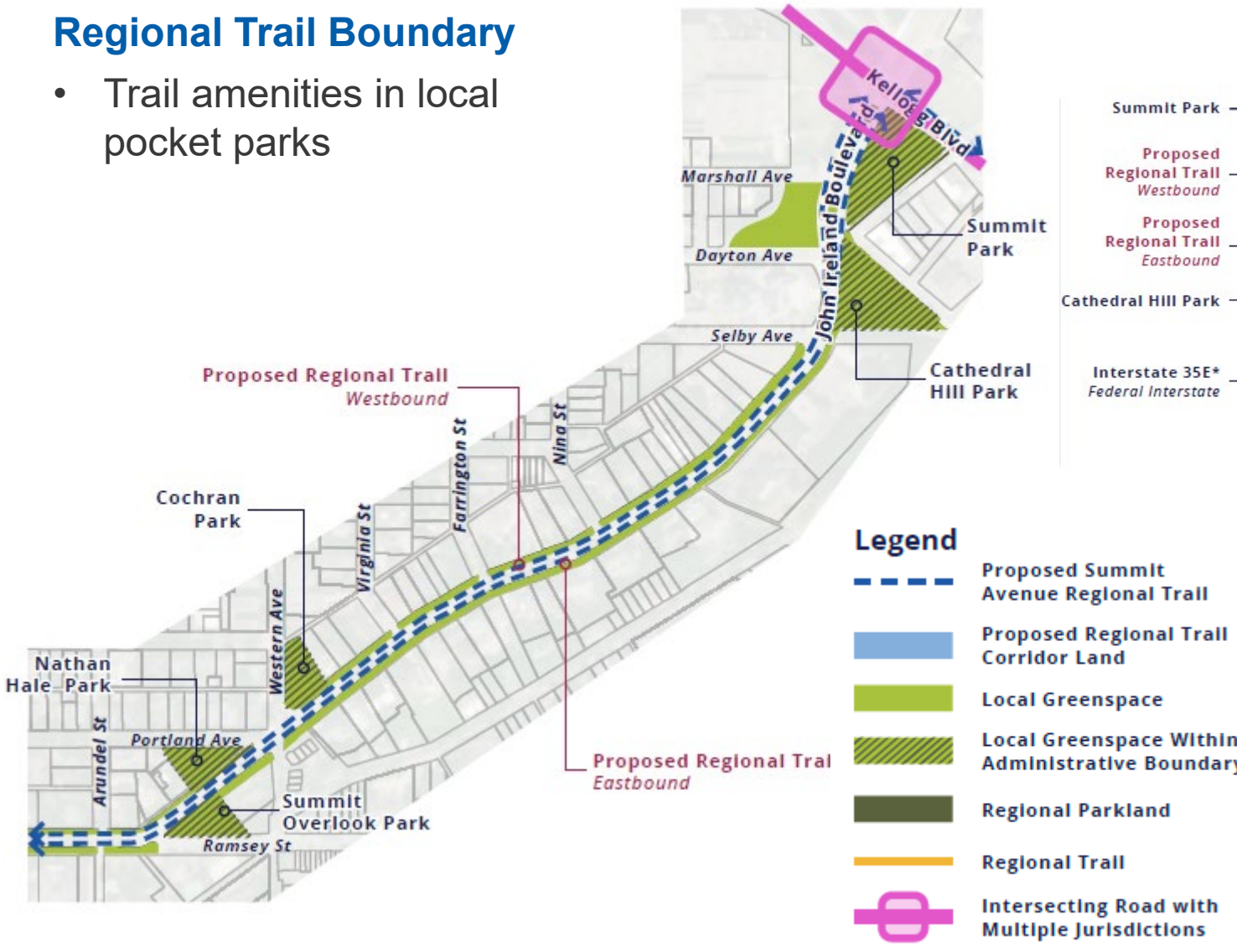


# Boundaries – Segment F&G

## Segment F

### Regional Trail Boundary

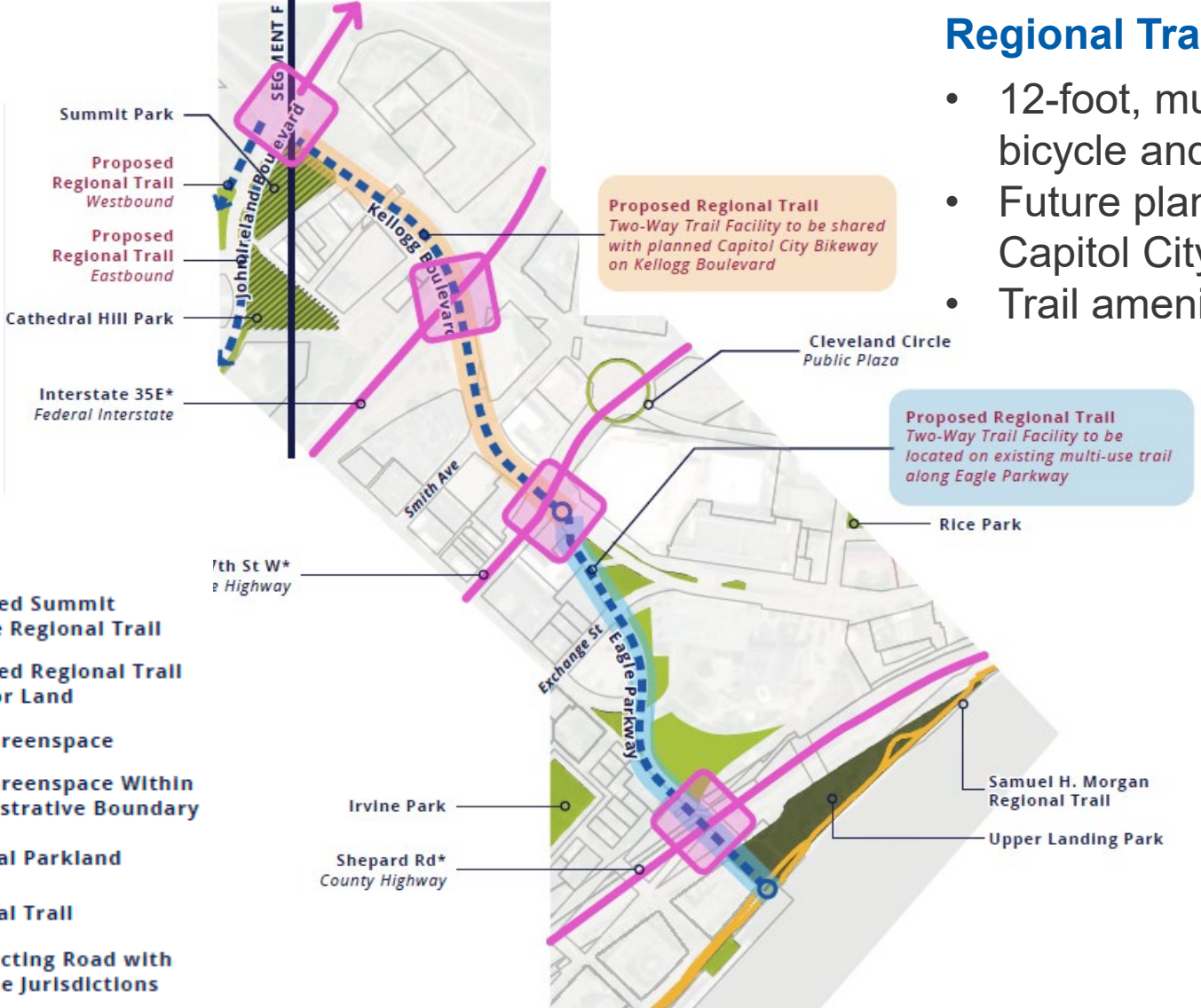
- Trail amenities in local pocket parks



## Segment G

### Regional Trail Boundary

- 12-foot, multi-use existing bicycle and pedestrian facility
- Future planning with the Capitol City Bikeway
- Trail amenities in local parks





# Rationale for Proposed Action



*A view of Summit Avenue.*

The Summit Avenue Long Range Plan is consistent with the requirements of the:

- 2040 Regional Parks Policy Plan
  - Chapter 5, Planning, Strategy 1
  - Other Council policies



# Costs

The total cost to develop the trail is approximately \$12,463,500 and \$70,000 annually for operations and maintenance.



*A view of people biking on Summit Avenue.*



# Proposed Action



*Summit Avenue lighting and street sign.*

- That the Metropolitan Council:
1. Approve the Summit Avenue Regional Trail Long-Range Plan.
  2. Require Saint Paul, prior to initiating any construction to send preliminary plans to the Metropolitan Council Environmental Services Interceptor Engineering Assistant Manager.





Thank you

**Tracey Kinney**

Senior Planner, Community Development



*A view of Summit Avenue and Mississippi River Boulevard.*