



# Coon Lake Regional Park Long Range Plan, Anoka County

Business Item 2023-145

Metropolitan Parks and Open Space Commission









# Partner Engagement



## Engagement

- Engagement plan:
  - Engage local cities, community groups, and organizations
- Cities of Columbus and East Bethel, and Linwood Township
- Sunrise River Watershed Management Organization
- General Themes:
  - Trails
  - Safety
  - Amenities

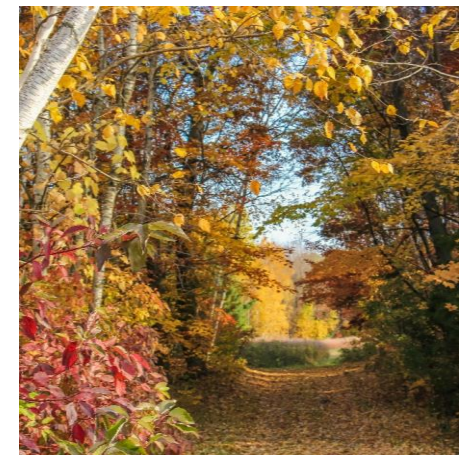
# Public Engagement

## Engagement Goals

- Build positive relationships with local communities and residents
- Build community ownership and an understanding of the County's planning process
- Make it easy for the public to participate in the planning process

## General Themes

- Increase safety along Lexington Avenue
- Provide more paved and natural surface trails, and winter walking trails.
- Support year-round amenities and activities
- Replace existing play area
- Provide more shade





# Equity Analysis



## Outcome

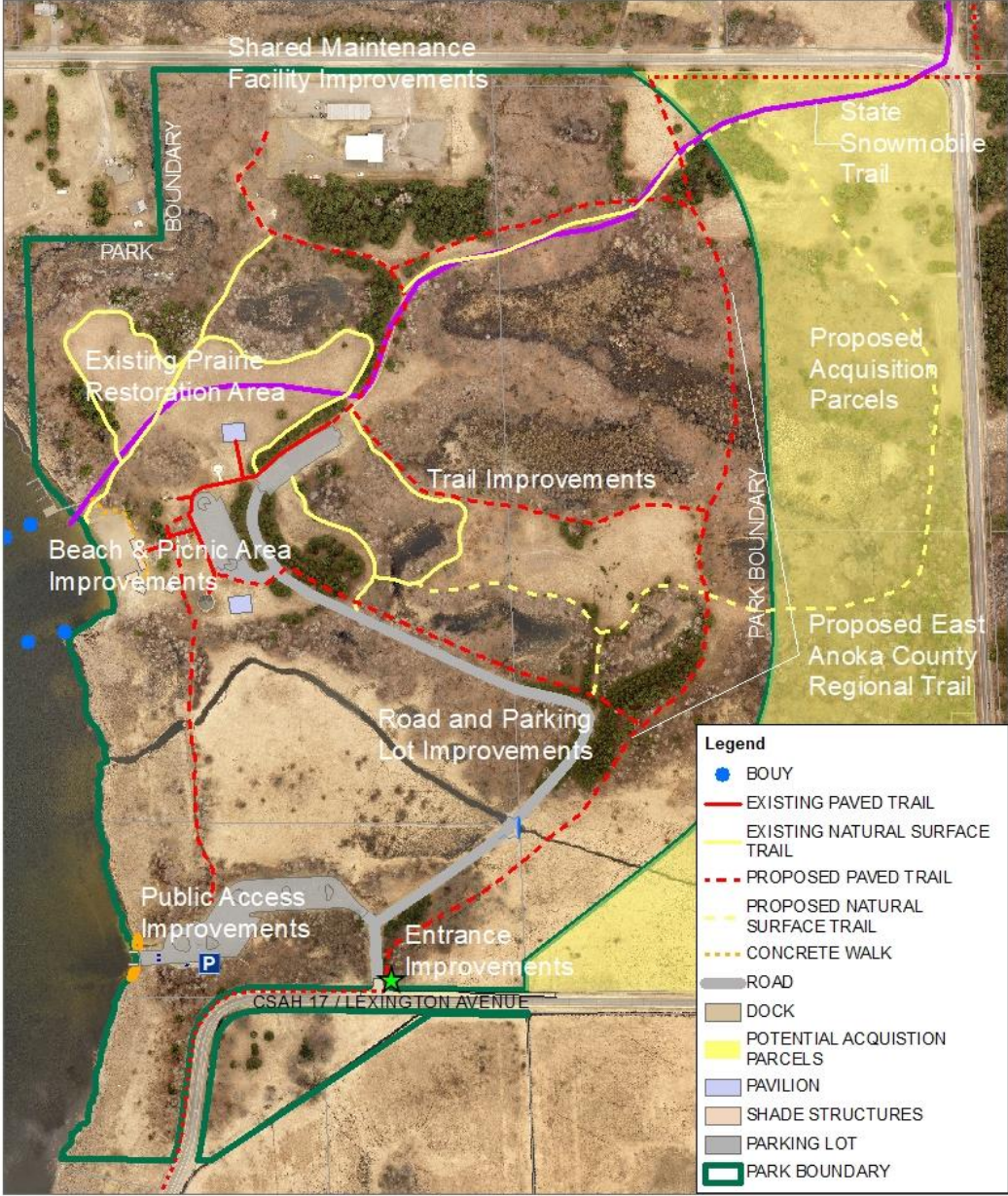
- 3-mile service area demographic:
  - 3-15% teenagers and young adults
  - 7-17% people 65+
  - 2-6% people with disabilities
  - 0-16% Hispanics, Blacks, and Asians
  - 4-19% population below the 185% poverty level
- Underrepresented groups:
  - Coon Lake Improvement Association
  - Parents Group (parents with kids who has disabilities)
- Engagement focused on:
  - Inform the public about the planning process
  - Consult the public to listen and gather input
- General Themes:
  - More looped trails
  - More opportunities for fishing
  - Road and water safety
  - Nature and sensory play features



# Development Concept

## Coon Lake Regional Park – 110-acre

- Recommended improvements are based on the park’s long-term vision and will be implemented based on available funding and priorities
- Park Improvements:
  - Park entrance, road, and parking lot
  - Public access to the waterfront
  - Trail improvements
  - Parks maintenance facility
  - More shade
  - Boat dock system & ADA launch
- Park Improvements cont.:
  - Picnic pavilions and restrooms
  - Playground
  - Signage & wayfinding
  - Program offerings



Coon Lake Park  
General Development Concept

0 450 900 Feet

Date: 12/16/2022



# Overall Estimated Cost



## Estimated Cost

- Total estimated acquisition cost associated with the Coon Lake Regional Park is \$542,800.
- Total estimated improvement cost associated with the Coon Lake Regional Park \$5,505,000.
- Total estimated annual operations and maintenance costs for Coon Lake Regional Park is \$50,000.
- Taken together, the total estimated cost associated with the Coon Lake Regional Park Long Range Plan is \$6,047,850.

# Rationale for Proposed Actions

The Coon Lake Regional Park Long Range Plan is consistent with the requirements of the:

- *2040 Regional Parks Policy Plan*
  - Planning Strategy 1
- Other Council policies



# Proposed Actions

- Approve Anoka County's Coon Lake Regional Park Long Range Plan.
- Encourage Anoka County to work with the City of Columbus to change the land use from Rural Residential to Park within the City's 2040 Comprehensive Plan when the proposed future 41-acre inholding is acquired and becomes part of the regional park. This will require a comprehensive plan amendment and must be submitted to the Metropolitan Council for review and authorization.



**Ua Tsaug**

**Pilamya ye/do**

**Miigwech**

**Gracias**

**Thank you**

**Chee Yang**

Planner, Community Development  
[chee.yang@metc.state.mn.us](mailto:chee.yang@metc.state.mn.us)

