



2050 Regional Development Guide and Regional Parks Policy Plan Update

Metropolitan Parks and Open Space Commission

March 2, 2023



Today

2050 Regional Development Guide

- Working Statement of Regional Values and Vision

Regional Parks Policy Plan Update

- Project Summary
- Project Timeline
- Proposed Approach
- Developing an Engagement Plan
- Developing Vision, Mission and Values



Regional Values, Vision, and Goals

Values

Values are core beliefs or principals that guide the work of the Council, our expectations of partnerships, and our policy and program development.

Vision

Our vision is what we want to achieve for the region through our policies, practices, programs, and partnerships.

Goals

Our goals will broadly describe the desired end states that we want to achieve for the region.

Regional Core Values: Revised Short Form

Equity

We value the people and communities of our region.

Leadership

We value those in our region who inspire and motivate others for positive change.

Accountability

We value being effective in our work and achieving measurable outcomes.

Stewardship

We value our region's abundant resources.

Regional Vision

Our Region is Equitable, Inclusive, and Welcoming

Our quality of life is high by national standards but not all communities share in this. We envision a future where inequities and injustices have been eliminated and all residents and newcomers feel welcome, included, and empowered.

Our Communities are Healthy, Safe, and Vibrant

The wellbeing of our region depends on the strength and inclusiveness of our economy as well as the quality, safety, and reliability of our public infrastructure and services. We envision a future where all our region's residents can live healthy, productive, and rewarding lives with a sense of security, agency, and wellbeing.

We Lead on Addressing Climate Change

Our region leads on the critical issue of climate change. We envision a future where we have eliminated or mitigated greenhouse gas emissions and have adapted to ensure that our communities and systems are resilient.

We Protect and Restore Natural Systems

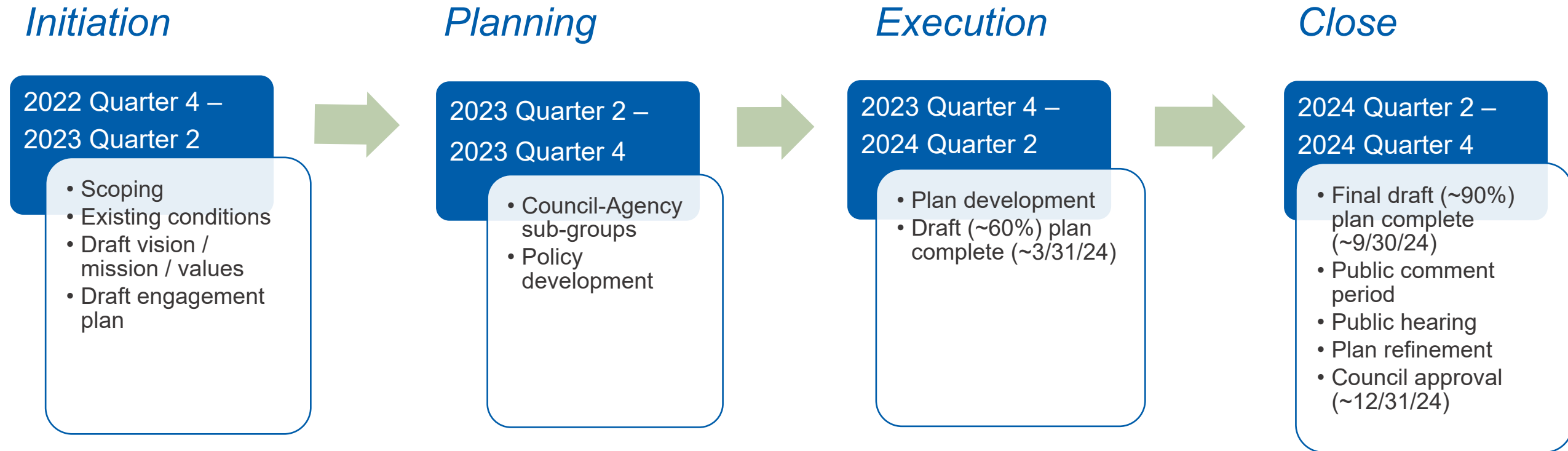
Our region has world class parks and abundant natural resources. We envision a future where natural systems are increasingly protected, integrated, and restored to ensure a high quality of life for our growing region.

Project Summary



- Background
- Initial engagement
 - Council staff
 - Implementing Agencies
 - Metropolitan Parks and Open Space Commission
 - Community groups
- Council Communications-led audience analysis
- Begin convening initial workgroups

Project Timeline



Coordination with the Regional Development Guide Process

Ongoing Engagement: Council Boards, Implementing Agencies, Targeted Communities, Broad Public, Partner Agencies

Proposed Approach

Initial Council-Agency workgroups

1. Community **Engagement**
2. Regional Parks and Trails System **Vision** and Values
3. Strategic, Sustainable **Funding**
4. Recreation **Activities** and Facilities
5. Park and Trail **Plan Requirements**, incl. Equity Analysis Requirement
6. **System Plan** Considerations, incl. Recreation Opportunity Spectrum
7. **Regional Trails** and Regional Bicycle Transportation Network

2023 Q1-
2023 Q2

2023 Q3 -
2024 Q1



Developing an Engagement Plan



Goal: Develop a community, stakeholder and public engagement plan for the Regional Parks Policy Plan update that is transparent

Status: Council Parks and Communications staff have started to draft a project engagement plan.

Proposed Next Steps: Council-Agency workgroup convenes twice by end of April to develop a set of options for consideration by Council-Agency (directors) partnership in May.

Developing Vision, Mission, and Values

Goal: Develop vision and mission statements and a set of values for the Regional Parks and Trails System, to guide policy plan development.

Status: Initial staff, partner, stakeholder and community engagement held, and basic staff analysis conducted.

Proposed Next Steps: Council-Agency workgroup convenes twice by end of April to develop a set of options for consideration by Council-Agency (directors) partnership in May.



Developing Vision, Mission, and Values

continued

Themes and Comments from the July RPPP & RDC Meeting

Here are a few things to know as you prepare for the meeting:

- The headlines are the initial themes emerging from the July meeting, identified by Tracy, Cole, Chen, and Emmett.
- Black bullet points are Council staff's comments (7/13/22)
- White bullet points are MPOSC's comments (7/13/22)
- Themes that seem to align or overlap have been initially grouped within the same box.

Let's discuss!

1. What resonates?
2. What's missing?

Metropolitan Council

Regional Parks Policy Plan

Preliminary Input, Implementing Agencies – Q3

If you had to write a two-sentence vision for regional parks and trails, what would it be? Please share your early ideas or key concepts with us.

- Regional parks and trails impact the quality of life for every metro area resident. Parks and Trails are equitable spaces for community.
- Creating and maintaining outdoor, engaging, nature-based experiences for today and tomorrow.
- A welcoming, well-used and loved system that is used by all communities to meet critical recreation needs.
- To positively impact the quality of life for all citizens in the Twin Cities Metropolitan Area by providing equal access to the unique natural-resource based parks and trails system, high quality outdoor recreation opportunities, and associated life-fulfilling programs.
- The regional park system provides that near-to-home outdoor recreation experience that works to provide ways to connect with nature, escape the built environment, provide solitude for contemplative thinking, energizes/refreshes the soul/being in ways that relieve stress/anxiety, provides physical exercise/challenges, and facilitates social well-being.
- Regional parks and Trails are places for people to play, explore, refresh, and connect.

Regional Parks Policy Plan

Preliminary Input, MPOSC – Q3

If you had to write a two-sentence vision for regional parks and trails, what would it be? Please share your early ideas or key concepts with us.

- Serving all residents and visitors with a wide array of active and passive experiences to build lifelong memories.
- A safe place to escape daily stress and enjoy the present while learning about our ecosystem. Always protecting the part of the world we live in.
- Continue the growth and investment in expanding size and scope through acquisition of property. Develop new areas of acquisition in a timely manner. Increase the level of accessibility for everyone beyond minimum standards.
- My happy-place.
- Sustainable system of integrated facilities that link open spaces of all scales and unite the regional environment and people with accessible and inclusive spaces. A critical refuge for people that enhances our regional sense of place and our connection to those before and after us.
- A system that offers progressive skills development and opportunities for families to explore and venture out to build youth, family, and community wellbeing.
- Our parks and trails are designed for family and individual enjoyment. They encompass a wide variety of geography, natural resources, and outdoor experiences.

Vision
Park
Nature
Inspire
Provide
Trail
Outdoor
Connect
Recreate
Life
Home

Values
Nature
All
Community
Resident
Equity
Diversity
Access
Partner
Lead
Quality

Values

Core beliefs or principles that guide our work

Should address:

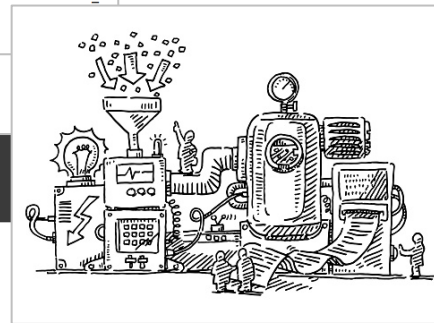
- Equity, justice, cultural competence, respect, and compassion
- Leadership, collaboration, entrepreneurship, and innovation
- Transparency, effectiveness, and accountability
- Stewardship, sustainably, and resilience

"Core" Values:

- Equity
- Leadership
- Accountability
- Stewardship

Cross-Cutting Regional Vision

- Equity: Our Region is Equitable, Inclusive, and Welcoming
- Climate: Our Region Leads on Climate Mitigation, Adaptation, and Resilience
- Natural Systems: Our Region Protects and Restores Natural Systems
- Public Health, Safety & Wellbeing: Our Region's Communities are Healthy, Safe, and Vibrant



Questions, Discussion

- What are your questions about what you've heard so far?
- Do you have policy-level guidance or advice to share with Council staff and the work groups getting underway?





Emmett Mullin

Manager, Regional Parks

emmett.mullin@metc.state.mn.us

Colin Kelly

Planning Analyst, Regional Parks

colin.kelly@metc.state.mn.us

Chee Yang

Planner, Regional Parks

chee.yang@metc.state.mn.us

