

2050 Regional Development Guide and Regional Parks and Trails Policy Plan

Metropolitan Parks and Open Space Commission



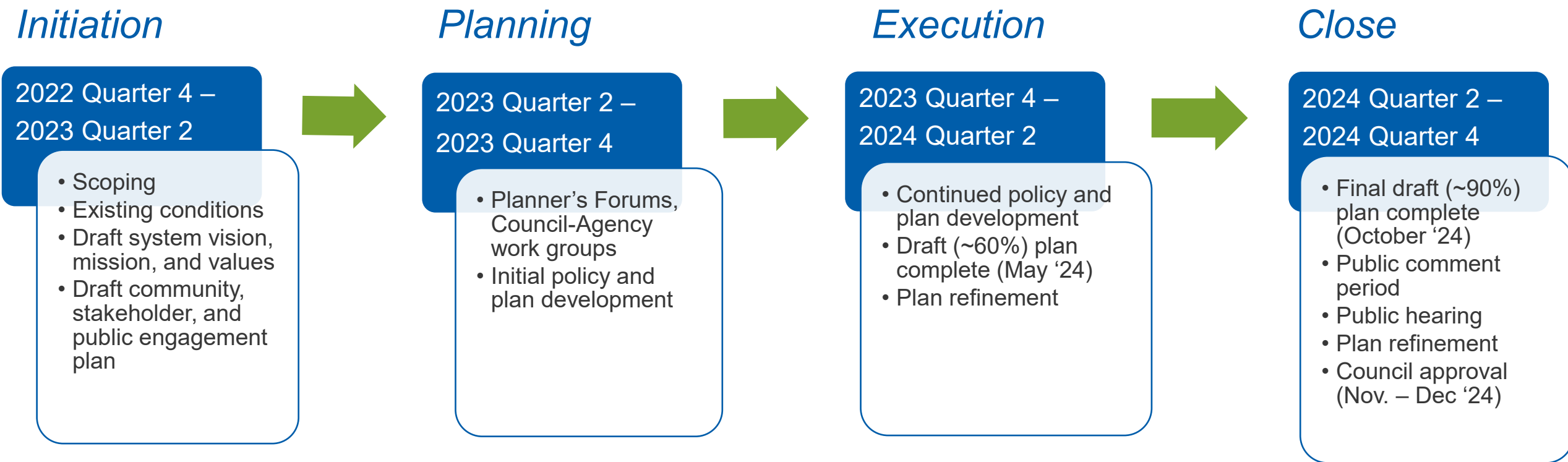
November 2, 2023

Presentation Overview



1. Share and discuss the outcomes to-date and draft proposals of two Agency-Council workgroups
 - Park and Trail Plan Requirements
 - System Plan Considerations
2. Share and discuss the draft Regional Parks and Trails Objectives
3. Quick preview of the remaining Agency-Council workgroups
 - Strategic, Sustainable Funding
 - Recreation Activities and Facilities
 - Climate and Natural Systems
 - Regional Trails and Regional Bicycle Transportation Network

Parks Policy Plan Timeline – Summary



Coordination with the Regional Development Guide Process, Other Council Systems and Policy Areas

Ongoing Engagement: Council Committees, Implementing Agencies, Community Groups, Stakeholders, Public

Agency-Council workgroups

1. Community, Stakeholder and Public Engagement
2. Regional Parks and Trails System Vision, Mission and Values
3. Park and Trail Plan Requirements, incl. Equity Analysis Requirement
4. System Plan Considerations, incl. Recreation Opportunity Spectrum
5. Strategic, Sustainable Funding
6. Recreation Activities and Facilities
7. Climate and Natural Systems
8. Regional Trails and Regional Bicycle Transportation Network

2023 Q1-
2023 Q2

2023 Q3 -
2024 Q1



Agency-Council workgroup: Park and Trail Plan Requirements



Park and Trail Plan Requirements including the Equity Analysis Requirement



RPPP Guidance

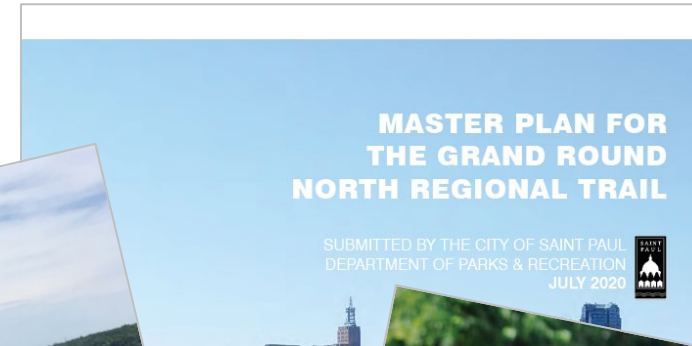
- Chapter 5 (Planning policy) – “Promote long-range planning and help provide integrated resource planning across jurisdictions.”
 - Strategy 1: Long-range plan requirements
 - Strategy 2: Enhanced multimodal access
 - Strategy 3: Joint powers agreements
 - Strategy 4: Cost sharing

Chapter 5 (Planning policy)

RPPP Guidance

Long-range plan requirements

1. Boundaries
2. Acquisition Costs
3. Stewardship plan
4. Demand forecast
5. Development concept
6. Conflicts
7. Public services
8. Operations
9. Partner engagement
10. Public engagement and participation
11. Equity analysis
12. Public awareness
13. Accessibility
14. Natural resources



Workgroup Advice *(part one)*

Use clear, plain language

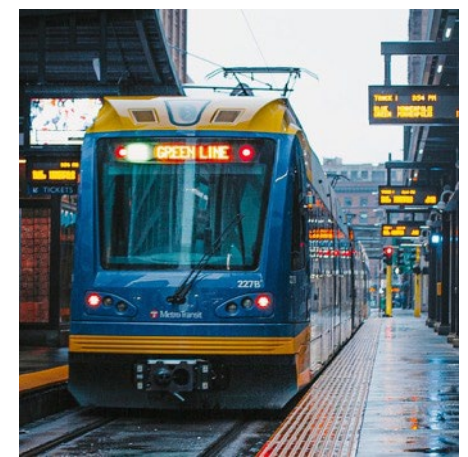
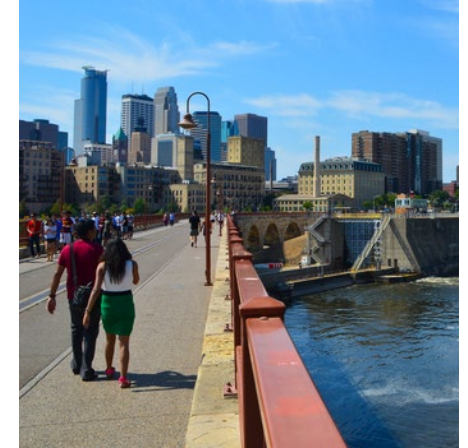
Streamline. Consider paring down number of requirements. Keep it simple.

Find a balance. Pare down those that are lengthy or repetitive. Expand those that need it.

Consider a matrix which lists all the required components by park/trail type

Weave sustainability/ climate action throughout plans, where applicable

Natural systems/ resources should be the foundation of most plans



Workgroup Advice *(part two)*

Consider a revised structure

Existing long-range plan requirements

- Boundaries
- Acquisition Costs
- Stewardship plan
- Demand forecast
- Development concept
- Conflicts
- Public services
- Operations
- Partner engagement
- Public engagement and participation
- Equity analysis
- Public awareness
- Accessibility
- Natural resources

Planning Framework / Context

- Plan vision and goals, relationship to other plans, role in ROS
- Map of unit, including RBTN *(if applicable)*

Natural Systems

- Stewardship plan
- Natural resources

Possible additions

- *Cultural landscape*
- *Climate resiliency*

Engagement

- Demand forecast
- Partner, Public engagement
- Equity analysis
- Public awareness

Development Concept (“The Plan”)

- Boundaries and Acquisition costs
- Development concept, Accessibility
- Land use considerations
- Public services, Operations

Agency-Council workgroup: System Plan Considerations



System Plan Considerations, including Recreation Opportunity Spectrum



RPPP Guidance

- Chapter 3 (System Plan) - Lists and describes the types of regional parks and trails
- Chapter 4 (Siting and Acquisition policy) – Describes the System Addition Process, regional park and trail criteria, and Siting and Acquisition Strategies
- Chapter 7 (Recreation Activities and Facilities policy) – recreation opportunities, range of recreation opportunities, equitable use, and trail system coordination

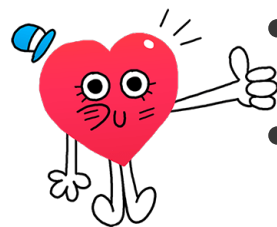
Families fish along shoreline at Phalen-Keller Regional Park in Ramsey County.

New Topics and Clarifications – Next Steps Proposal



New Topics

- Developing an approach to service areas (Chapters 3, 4, and 5)
- Developing an approach to cultural sites (Chapter 3)
- Mapping Park and Trail Implementation (Chapter 3)



Clarifications

- Consolidating Park and Trail Definitions (Chapters 2, 3, 4, and 7)
- Adding implementing agency-level maps (Chapter 3)
- Clarifying the systems additions process (Chapter 4)
- Clarifying the system-level change process (Chapters 4 and 5)

View of Mississippi River from bluffs at Spring Lake Park Reserve, Dakota County.

Service Areas (Chapters 3, 4, and 5)

Question

Should Three Rivers' recreation opportunity spectrum service area concept be applied to the Regional Parks and Trails System?

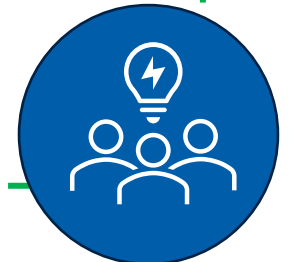
It would be used with future system's additions processes, long-range plan requirements, and trail spacing.

Advice Heard

- A regionally consistent service area approach should be a suggestion not a policy.
- Every agency does this differently.
- Urban, suburban, and rural regional parks and trails have different service areas.

Draft Proposal

- More advice is needed from other planners and possibly the parks directors. (Future Planners Forum topic)
- This is a complex addition since the implications are currently unknown. (Further study is needed)
- Consider adding resources to an interactive website as compared to creating a new policy.



Urban	Bridging and Partnership	Suburban	Semi-Developed	Natural	Specialized Recreation Features
Regional Park	Local Feature	Regional Park	Park Reserve	Park Reserve	
Service Area Travel Time: 10 min. drive	Service Area Travel Time: 10 min. walk/bike	Service Area Travel Time: 10 min. drive	Service Area Travel Time: 20 min. drive	Service Area Travel Time: 30 min. drive	Service Area Travel Time: 45 min. drive

Destination Trail	Linking Trail
Service Area Distance: 1.5 mile walk/bike	Service Area Distance: 1.5 mile walk/bike

Parks & Trail Implementation (Chapter 3)

Question

Should we collaboratively develop an approach to show the current funding scenario and an increased funding scenario.

Advice Heard

- We are always changing the budgets and planning.
- There seems to be an appetite to knowing how much money is needed.
- Maybe this could be a conversation with the Directors each year.

Draft Proposal

- More advice is needed from other planners and possibly the parks directors. (Future Planners Forum or Partner meeting topic)



Cultural Sites (Chapter 3)

Question

Should Council and agency staff collaboratively develop an approach for cultural sites?

This would include the region's Indigenous community.

Advice Heard

- There needs to be a conversation with Indigenous people in the area.
- Agencies have conversations with Indigenous people about regional units but not about the Regional Parks Policy Plan.

Draft Proposal

- Support to pursue the conversation with Indigenous people in the area.
- Continued discussion needed.
- Coordinate with the outcomes of Historical/Cultural Study.
- Bring the topic to next Planner's Forum for additional discussion and input.



Park and Trail Definitions (Chapters 2, 3, 4, and 7)

Question

Chapters 2, 3, 4, and 7 of the Regional Parks Policy Plan include multiple references to and definitions of Regional Parks and Trails.

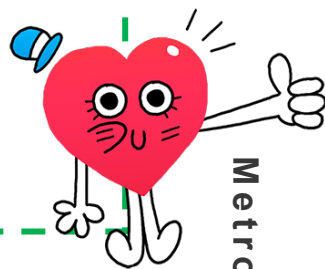
Council Parks staff are exploring ways to consolidate this content, reduce redundancy, and promote clarity to readers. Do you support this direction?

Advice Heard

- The text descriptions are more robust.
- Consider the urban context or Three Rivers' Recreation Opportunity Spectrum in relation to park and trail types.
- Include bridging facilities in the Chapter 3 tables and other places.

Draft Proposal:

- Support for consolidating the content.
- Support for using the narrative descriptions since they are more robust.
- Consider the ROS
 - Associating units with the urban/rural spectrum.
- Consider updating bridging facility description.



Clarifying the System Additions Process and System - Level Changes; and Adding Agency-Level Maps

Clarifying the System Additions Process

Staff plan to explore clarifying the system additions process in the plan to initially include process, application, and review criteria.

Advice Heard

- The directors should be part of this conversation.

Clarifying system – level changes Staff plan to explore clarifying the system – level changes process to include types of substantial changes (name changes, modifying search areas, etc.).

Advice Heard Support for clarifying system-level changes.

Adding Agency-level maps

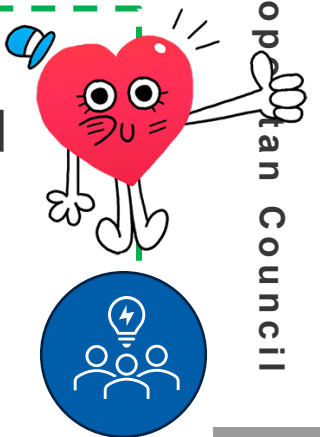
Staff plan to explore adding agency-level maps.

Advice Heard

- We use and share the 7-county metro map frequently.
- People think the search corridors are in the general location of where they are sited on the map. Maybe this can be shown differently.
- The advice of a graphic designer would be helpful.

Draft Proposal:

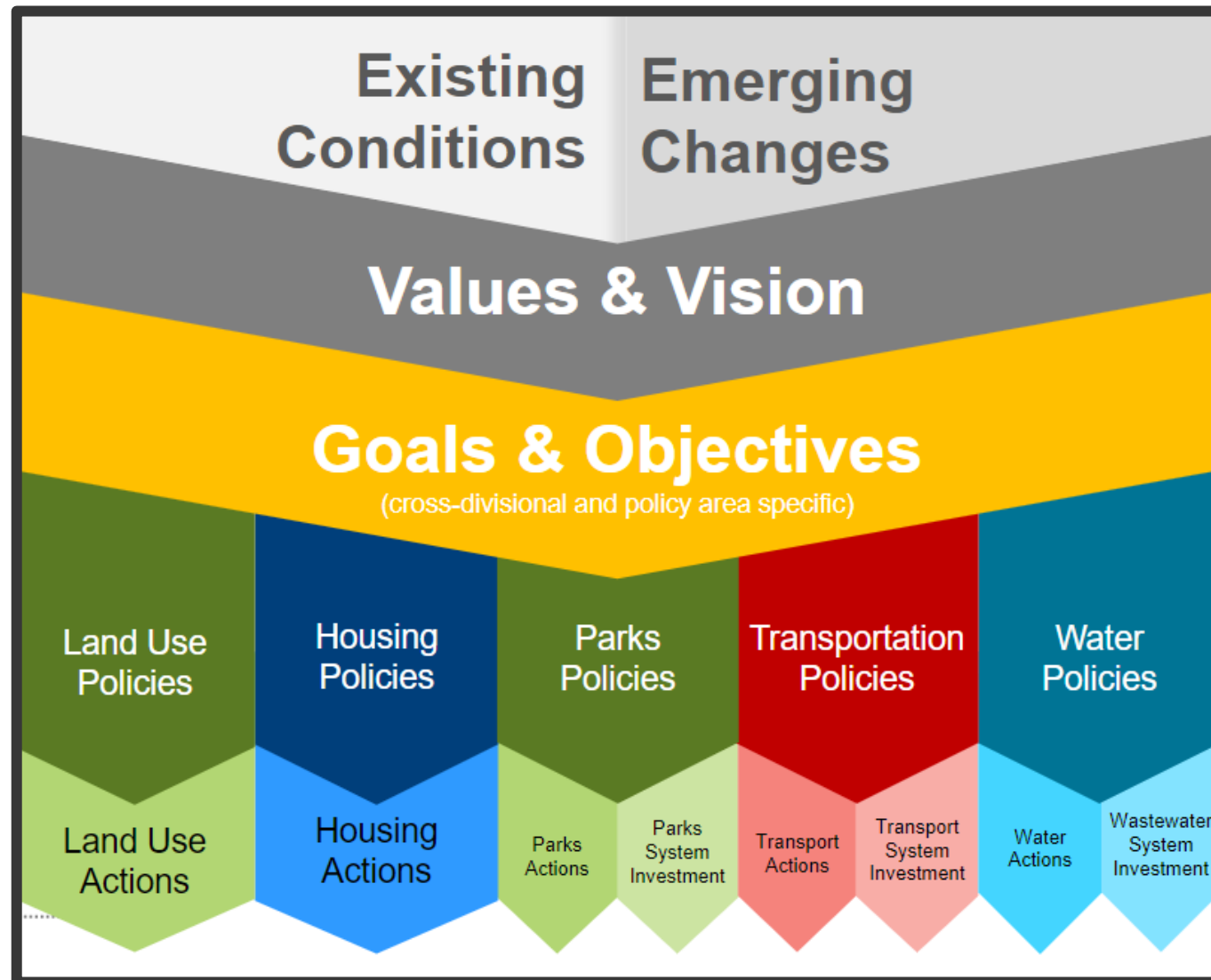
- Support for adding agency-level maps and clarifying the systems additions process, clarifying system-level changes.
- Bring the system additions topic to Parks Implementing Directors.



Draft Regional Parks and Trails Objectives



Regional Development Guide – Proposed Structure and Definitions



Values

Values are core beliefs or principals that guide the work of the Council, our expectations of partnerships, and our policy and program development.

Vision

Our vision is what we want to achieve for the region through our policies, practices, programs, and partnerships.

Goals

Our goals will broadly describe the desired end states that we want to achieve for the region.

Regional Development Guide – Values

Equity

We value the people and communities of our region.

Leadership

We value those in our region who inspire and motivate others for positive change.

Accountability

We value being effective in our work and achieving measurable outcomes.

Stewardship

We value our region's abundant resources.

**Council endorsed draft values.*



Regional Development Guide – Vision Examples and Goals

Vision Examples

“We envision a healthy, just, and resilient region where future generations thrive and experience new opportunities supported by planning that results in economical services, housing affordability, clean water, thriving ecosystems, and safe, accessible transportation throughout the region.”

“We envision an equitable future where our region’s residents, communities, and economy thrive. Through collaborative leadership and innovative planning, we will deliver of equitable and affordable services and infrastructure; we will confront challenges, including those related to equity and climate change; and we will seize opportunities to ensure the wellbeing of our natural and built environments.”

Goals

Our Region is Equitable and Inclusive

Racial inequities and injustices experienced by historically marginalized communities have been eliminated; and all residents and newcomers feel welcome, included, and empowered.

Our Communities are Healthy and Safe

All our region’s residents live healthy, productive, and rewarding lives with a sense of security, dignity, and wellbeing.

Our Region is Dynamic and Resilient

Our region meets the opportunities and challenges faced by our communities and the economy including issues of choice, accessibility, and affordability.

We Lead on Addressing Climate Change

We have mitigated greenhouse gas emissions and have adapted to ensure that our communities and systems are resilient to climate impacts.

We Protect and Restore Natural Systems

We protect, integrate, and restore natural systems to protect habitat and ensure a high quality of life for our region

Draft Regional Parks and Trails Objectives

WORKING REGIONAL GOALS

Our region is equitable and inclusive

Our communities are healthy and safe

Our region is dynamic and resilient

We lead on addressing climate change

We protect and restore natural systems

DRAFT PARKS OBJECTIVES

Equity
Better connect people with community, natural, and cultural resources in order to support physical, emotional, and mental well-being.

Infrastructure
People can rely on renewed, repaired, and replaced park and trail infrastructure.

Climate and Natural Systems
Preserve and restore natural systems at regional parks and trails to help build a more resilient region.

Meeting Future Needs
Acquire land and develop new opportunities to meet the region’s growing demand for regional parks and trails.

EXISTING PARKS POLICIES

Siting and Acquisition
Identify lands with high-quality natural resources that are desirable for Regional Parks System activities and put these lands in a protected status, so they will be available for recreational uses and conservation purposes in perpetuity.

Planning
Promote master planning and help provide integrated resource planning across jurisdictions.

System Protection
Protect public investment in acquisition and development by assuring that every component in the system is able to fully carry out its designated role as long as a need for it can be demonstrated.

Recreation Activities and Facilities
Provide a regional system of recreation opportunities for all residents and visitors while conserving the integrity of the natural resource base within the Regional Parks System on which these opportunities depend.

Finance
Provide adequate and equitable funding for the Regional Parks System units and facilities in a manner that provides the greatest possible benefits to the people of the region.

Agency-Council workgroups

1. Community, Stakeholder and Public Engagement
2. Regional Parks and Trails System Vision, Mission and Values
3. Park and Trail Plan Requirements, incl. Equity Analysis Requirement
4. System Plan Considerations, incl. Recreation Opportunity Spectrum
5. Strategic, Sustainable Funding
6. Recreation Activities and Facilities
7. Climate and Natural Systems
8. Regional Trails and Regional Bicycle Transportation Network

2023 Q1-
2023 Q2

2023 Q3 -
2024 Q1





Thank you!

Emmett Mullin

Manager, Regional Parks

emmett.mullin@metc.state.mn.us

Colin Kelly

Planning Analyst, Regional Parks

colin.kelly@metc.state.mn.us

Tracey Kinney

Senior Planner, Regional Parks

tracey.kinney@metc.state.mn.us

