

# Cottage Grove Ravine Regional Park, Park Acquisition Opportunity Fund Award (Stu-Mac), Washington County

Business Item 2024-89

Metropolitan Parks and Open Space Commission

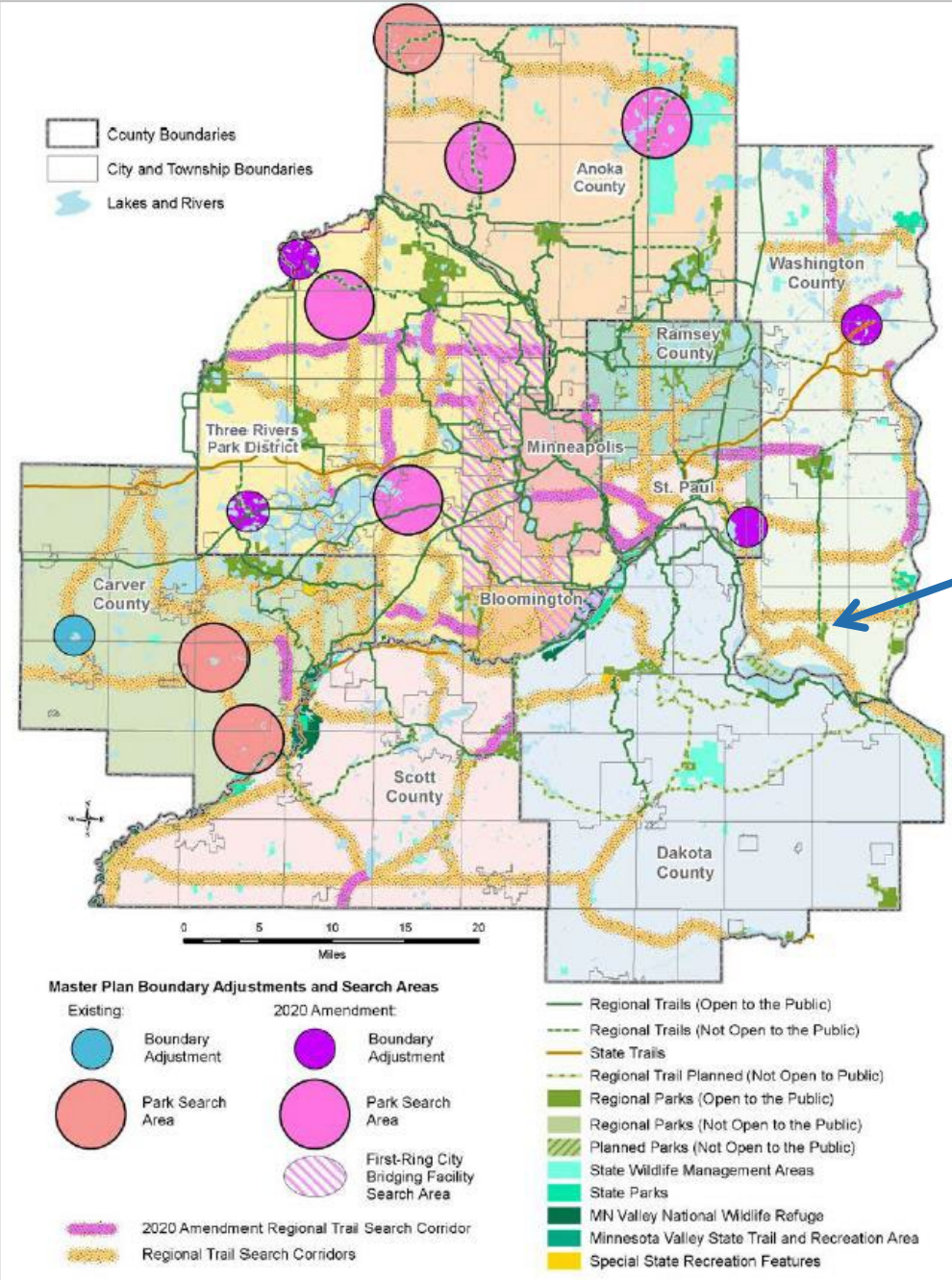
Jessica Lee

---

April 4, 2024

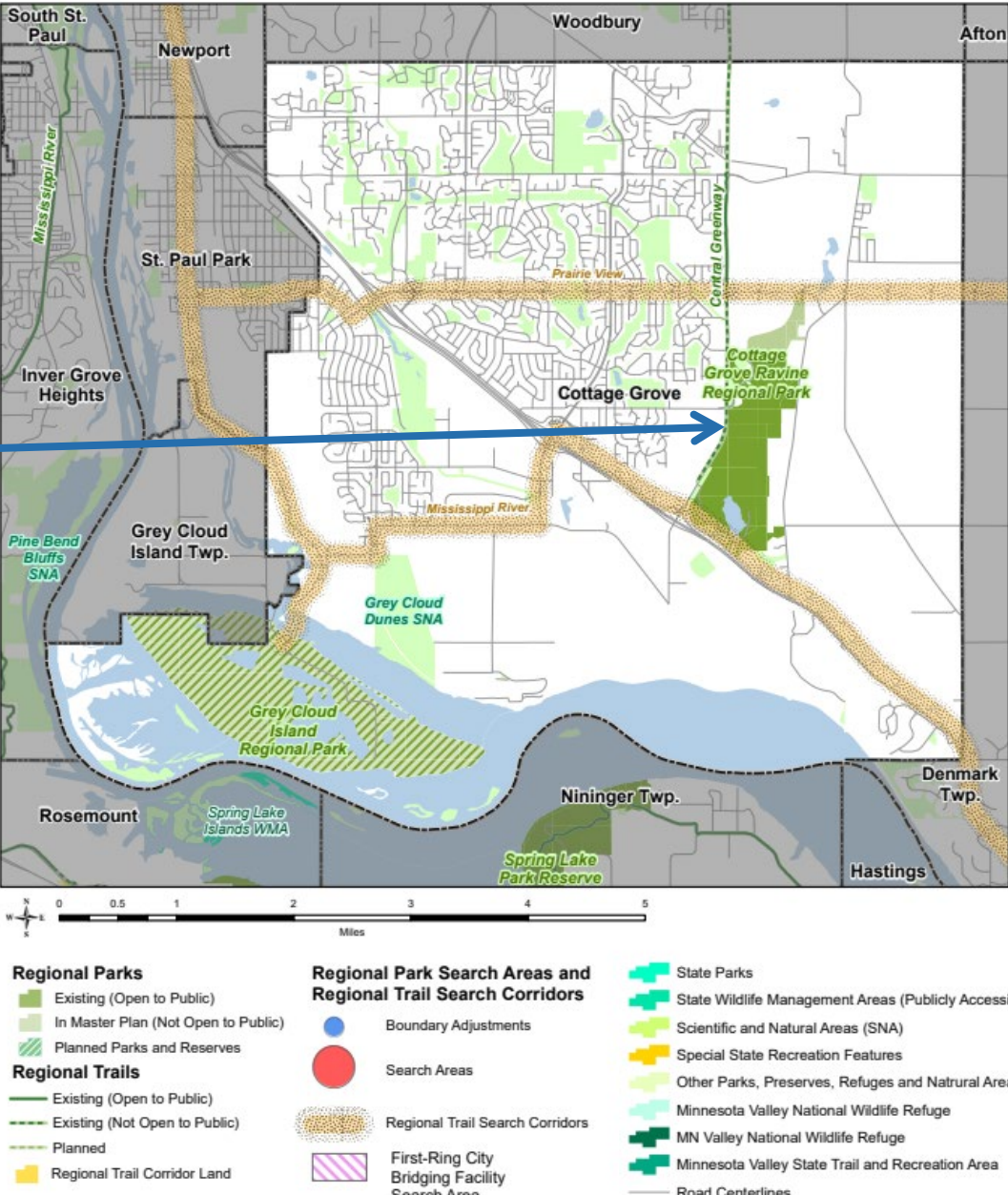


# Regional Parks System Plan Map



Cottage Grove Ravine Regional Park

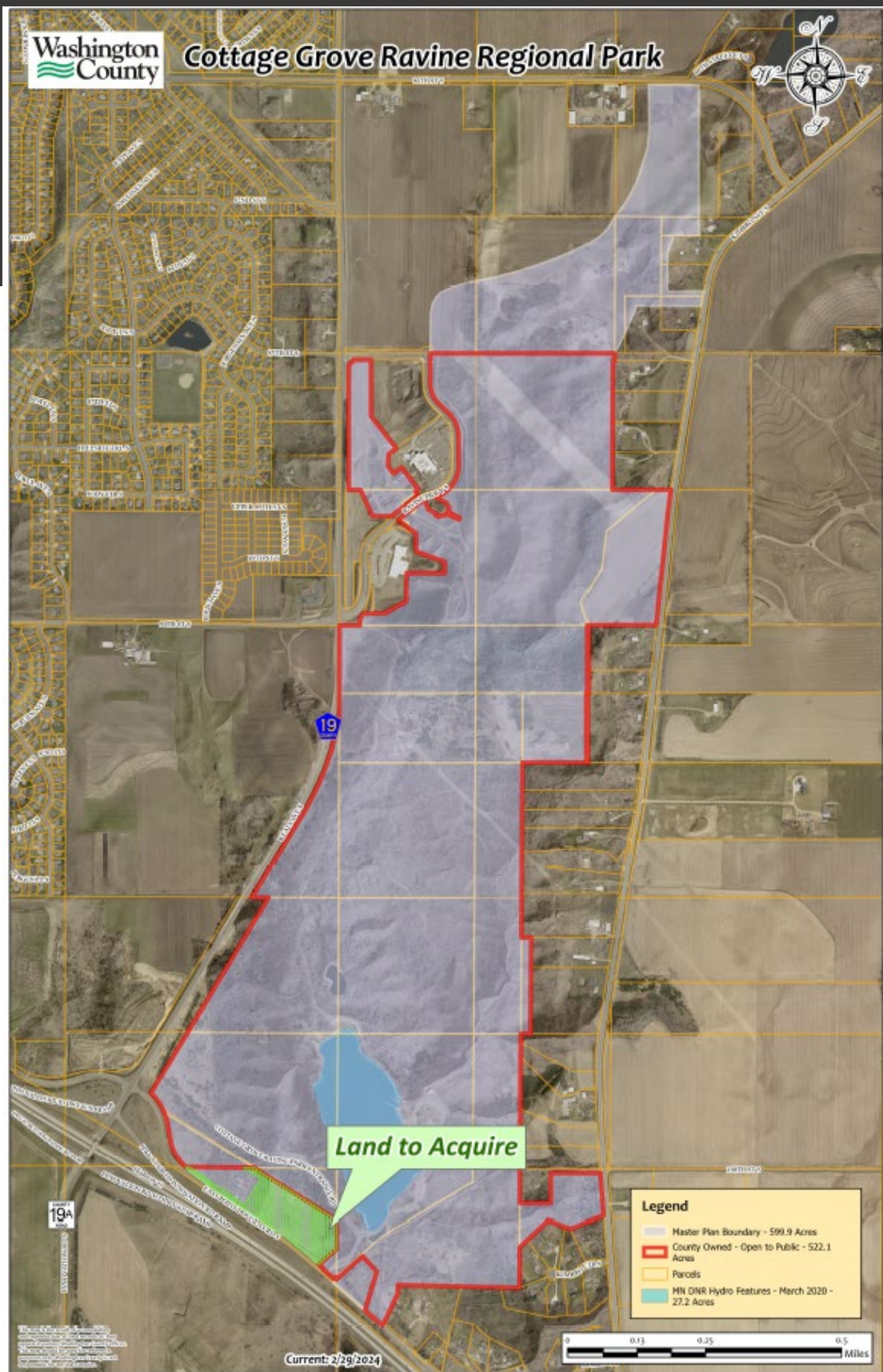
## Regional Parks System City of Cottage Grove, Washington County







# Cottage Grove Ravine Regional Park





# Project Cost

- Purchase price: \$525,000
- Total acquisition cost: \$542,296
- Total grant amount: \$406,722
- Washington County match: \$135,574



# Rationale for Recommendation

## Consistent with:

- The 2040 Regional Parks Policy Plan;
- The Parks and Trails Legacy Fund;
- The Cottage Grove Ravine Regional Park Long-range Plan; and
- Washington County is within its \$1.7 million per fiscal year limit for the PTLF Park Acquisition Opportunity Funds.



# Recommendations

## That the Metropolitan Council:

1. Approve a grant of up to \$406,722 from the Park Acquisition Opportunity Fund to Washington County to acquire approximately 11 acres located at 9826 East Point Douglas Road South in Cottage Grove, MN for the Cottage Grove Ravine Regional Park.
2. Authorize the Executive Director of Community Development to execute the grant agreement and restrictive covenant on behalf of the Council.