

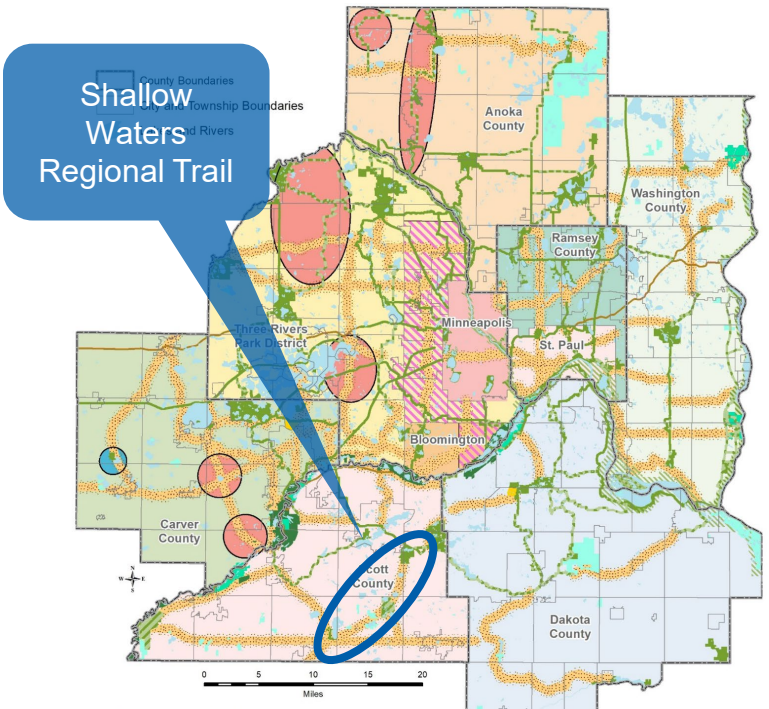
Shallow Waters Regional Trail, Scott County

Business Item 2024-307

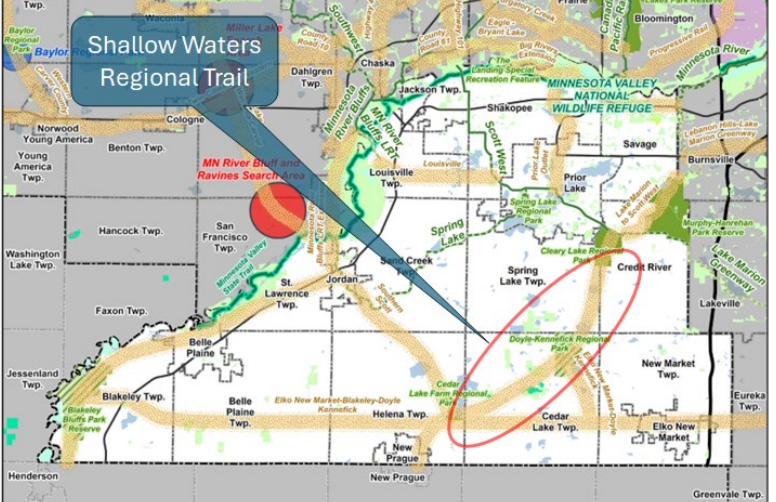
Metropolitan Parks and Open Space Commission



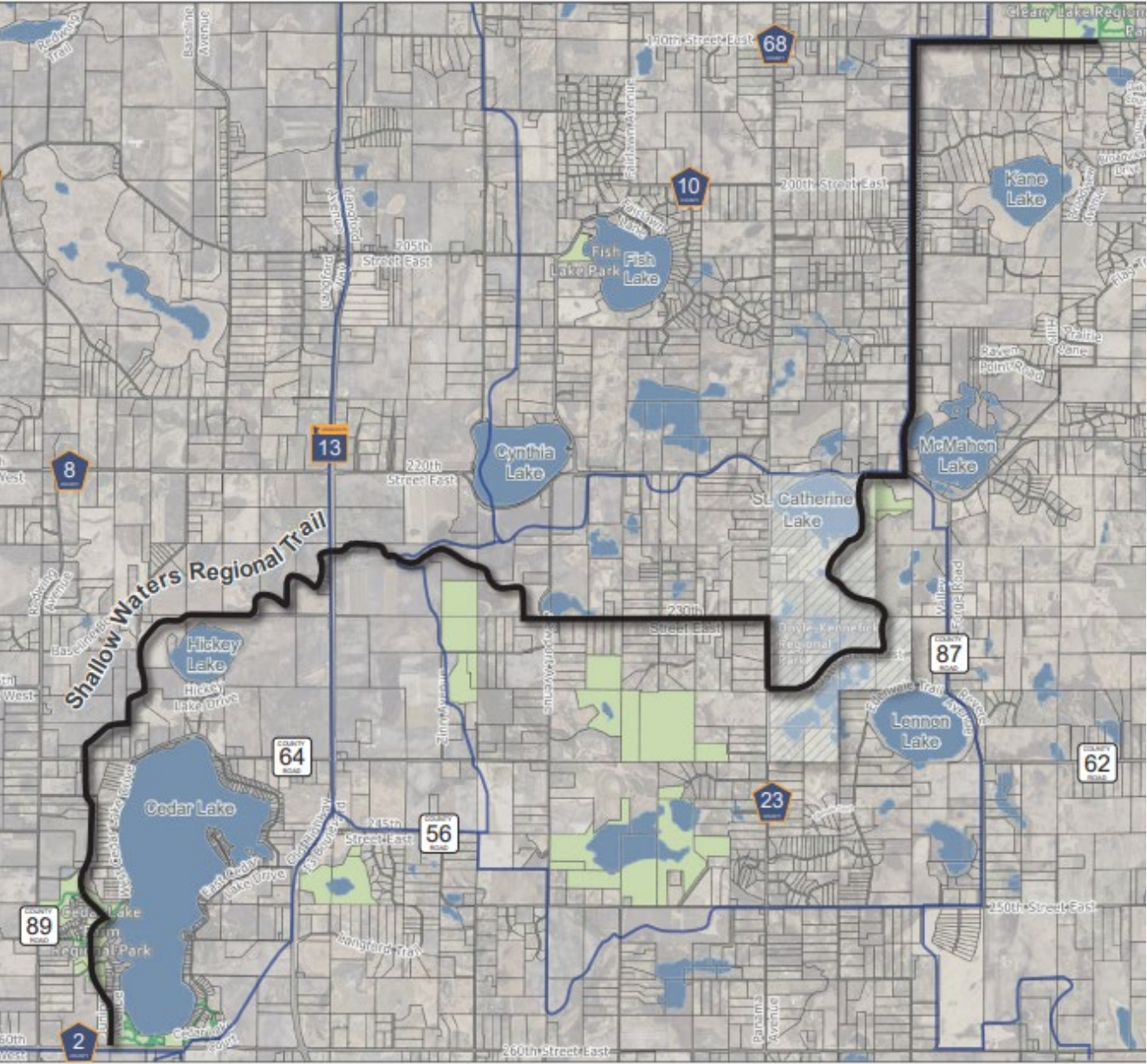
Shallow Waters Regional Trail



7-County Region



Scott County



Shallow Waters Regional Trail

Equity Analysis

Project Data

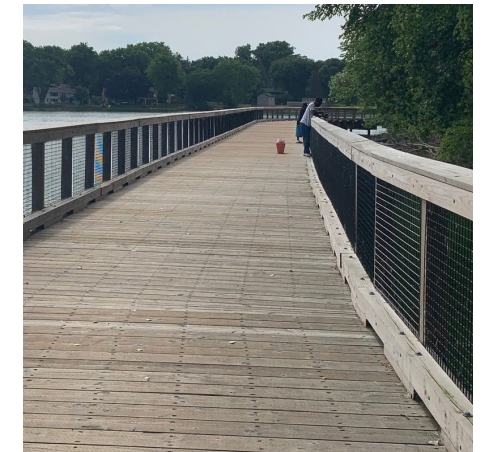
- Scott County identified gaps in service for groups including:
 - Residents of Shakopee and Belle Plaine
 - People of color
 - Individuals with less than a high school education
 - Households with annual incomes less than \$75,000
 - Individuals under the age of 18
- These groups face barriers to access due to poor proximity to parks, feeling unwelcome or unsafe, a lack of cultural accommodations, language barriers, cost, and a lack of awareness.

Public Engagement

- Scott County hosted multilingual engagement opportunities throughout the process.
- Themes included:
 - Concerns about trail's proximity to hunting grounds
 - Questions about safely crossing County Road 8
 - People valued scenic trails and recognized their value for health and exercise.

Evaluation Summary

- Feedback received shaped the final plan.
- Future engagement and communication efforts will be needed.



Public and Partner Engagement



Public Engagement

- Community conversations, project website, online engagement tool
- Technical and Community Design Team
- Open houses on May 10, 2022 and March 29, 2023

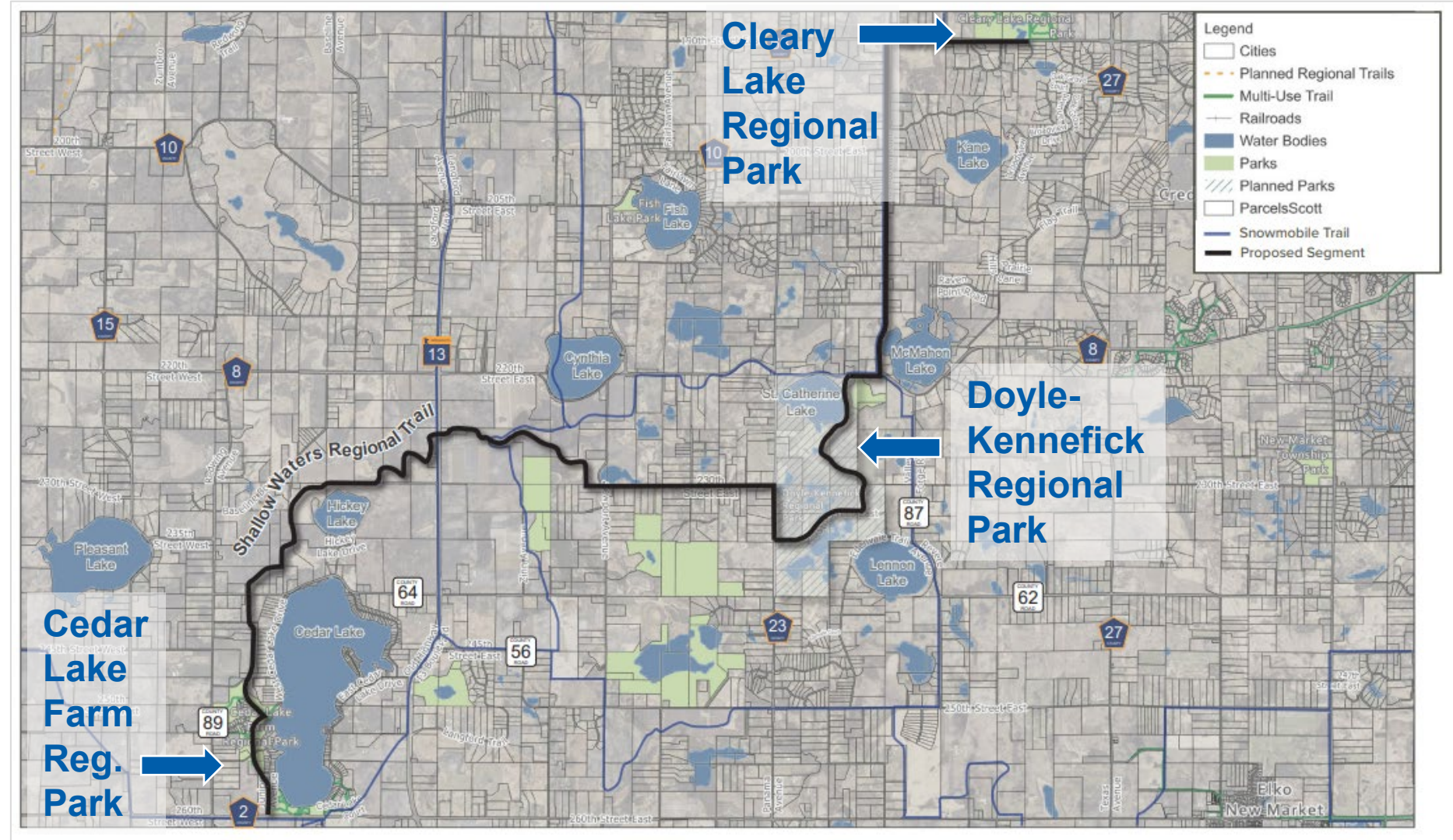


Partner Engagement

- One on one meetings with staff from townships, Shakopee Mdewakanton Sioux Community (SMSC) leadership
- Themes included:
 - Concerns about the trail traveling through private property
 - Questions on how wetland areas will be mitigated and funded
 - An interest in parks and trails and in connecting facilities

Boundaries

- 17-mile north-south trail
- Alignment starts at the southern border of **Cedar Lake Farm Regional Park**.
- The segment between Cedar Lake Farm and **Doyle-Kennefick** regional parks will primarily deviate from road right-of-way.
- Alignment continues north and connects with the southern entrance of **Cleary Lake Regional Park**.



Development Concept

- Represents a balance: Meeting the needs of the regional population while respecting the opinions and concerns of residents living near the trail.
- 10-foot wide, non-motorized, paved, multi-use trail.
- Trail plan identifies 20 potential at-grade crossings. Roadway crossings on busier roads will be grade separated.
- New segments will incorporate traffic control signs and devices. Wayfinding signage and kiosks will be located at road intersections or trailheads.
- Rest stop amenities will be installed every two miles.



240th St. near Cedar Lake Farm Regional Park, Segment 1



Approx. location of trail crossing between segments 2 and 3



230th St. looking west, Segment 3



Doyle-Kennefick Regional Park, Segment 4

Estimated Costs



Total Development Costs

The total estimated cost for design and construction of the Shallow Waters Regional Trail is **\$28.7 million**.

Acquisition

The estimated cost for acquisitions is **\$1.47 million**.

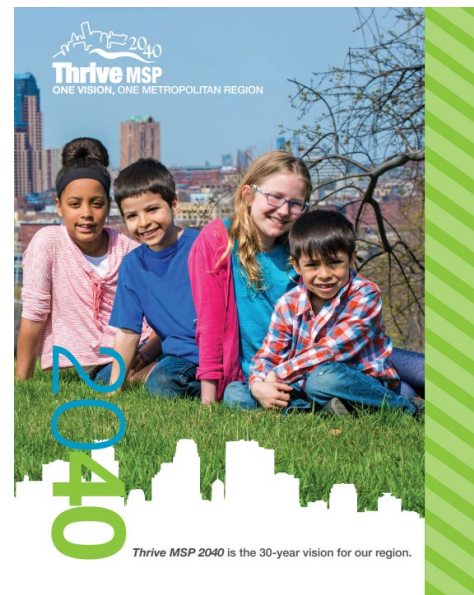
Operations

The estimated annual operating cost is approximately \$6,000 per mile, for a total of **\$26,280 annually**.

Rationale for Proposed Action

The Shallow Waters Regional Trail Long-Range Plan is consistent with the requirements of the:

- *2040 Regional Parks Policy Plan*
 - Chapter 5, Strategy 1
- Other Council policies



Proposed Action

That the Metropolitan Council:

1. Approve the Shallow Waters Regional Trail Long-Range Plan





Thank you

Kevin Phan

Planner, Community Development

kevin.phan@metc.state.mn.us



METROPOLITAN
C O U N C I L