



# 2050 Regional Parks and Trails Policy Plan

Metropolitan Parks and Open Space Commission

Colin Kelly, Tracey Kinney, and Kevin Phan

July 11, 2024

[metro council.org](http://metro council.org)



# Proposed mid 2024 Metropolitan Parks and Open Space Commission engagement

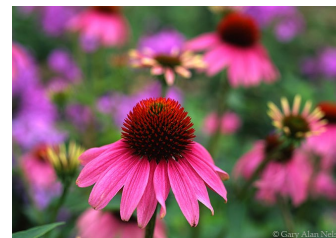
Timing	Proposed Topics, Focus
May 2, 2024	<ul style="list-style-type: none"> <li>• Draft (60%) plan</li> <li>• Recreation, Facilities, and Programming (existing chapter 7)</li> <li>• Finance (existing chapter 8)</li> </ul>
June 6, 2024	<ul style="list-style-type: none"> <li>• Natural Systems (new, crosswalks to existing chapter 4)</li> <li>• Climate Resilience (new)</li> <li>• Regional Parks and Trails Planning Handbook</li> </ul>
July 11, 2024	<ul style="list-style-type: none"> <li>• System Plan (existing chapter 3)</li> <li>• Planning (existing chapter 5)</li> <li>• System Protection (existing chapter.6)</li> </ul>
August 1, 2024	<ul style="list-style-type: none"> <li>• <b>Draft public comment (90%) plan</b></li> <li>• Workplan (existing chapter 9)</li> </ul>



Marsh marigold



Wild geranium



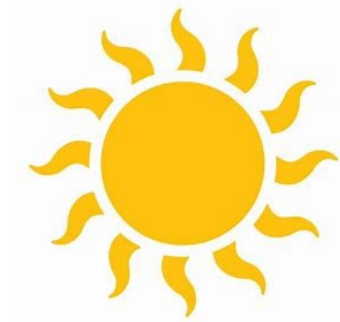
Purple coneflower



Spotted Joe Pye Weed

# Schedule for finalizing the Regional Development Guide

Timing	Milestone
August 14, 2024	Council authorizes release for public comment (MC)
August 15, 2024	Public comment draft posted
September 25, 2024	Public hearing (MC)
October 7, 2024	Comment period closes (CDC)
Varies	Final public comment reports prepared
February 12, 2025	Council adoption (MC)



# Metropolitan Parks and Open Space Commission advice



## June 6, 2024 meeting

### Overall

- Desired consistency in terminology, demographic references:
  - “Indigenous” and “American Indian”
  - “Populations aged 60 and over” and “over 65 years of age”
- Ensure document - including any icons - are accessible to all readers

### System Plan, Natural Systems

- Like “Special Feature – Historical Landscapes” subclassification
- Consider metrics associated with water

### Climate Resiliency

- Applaud the work, encourage continued development of metrics
- Better access to public transit has climate benefits

### System Protection

- The language “...as long as a need for it can be demonstrated” is vague

### Planning

- Appreciate proposed inclusion cultural resource inventory. Standards?

# Regional Park Implementing Agency feedback



## June 20, 2024 Partner Meeting

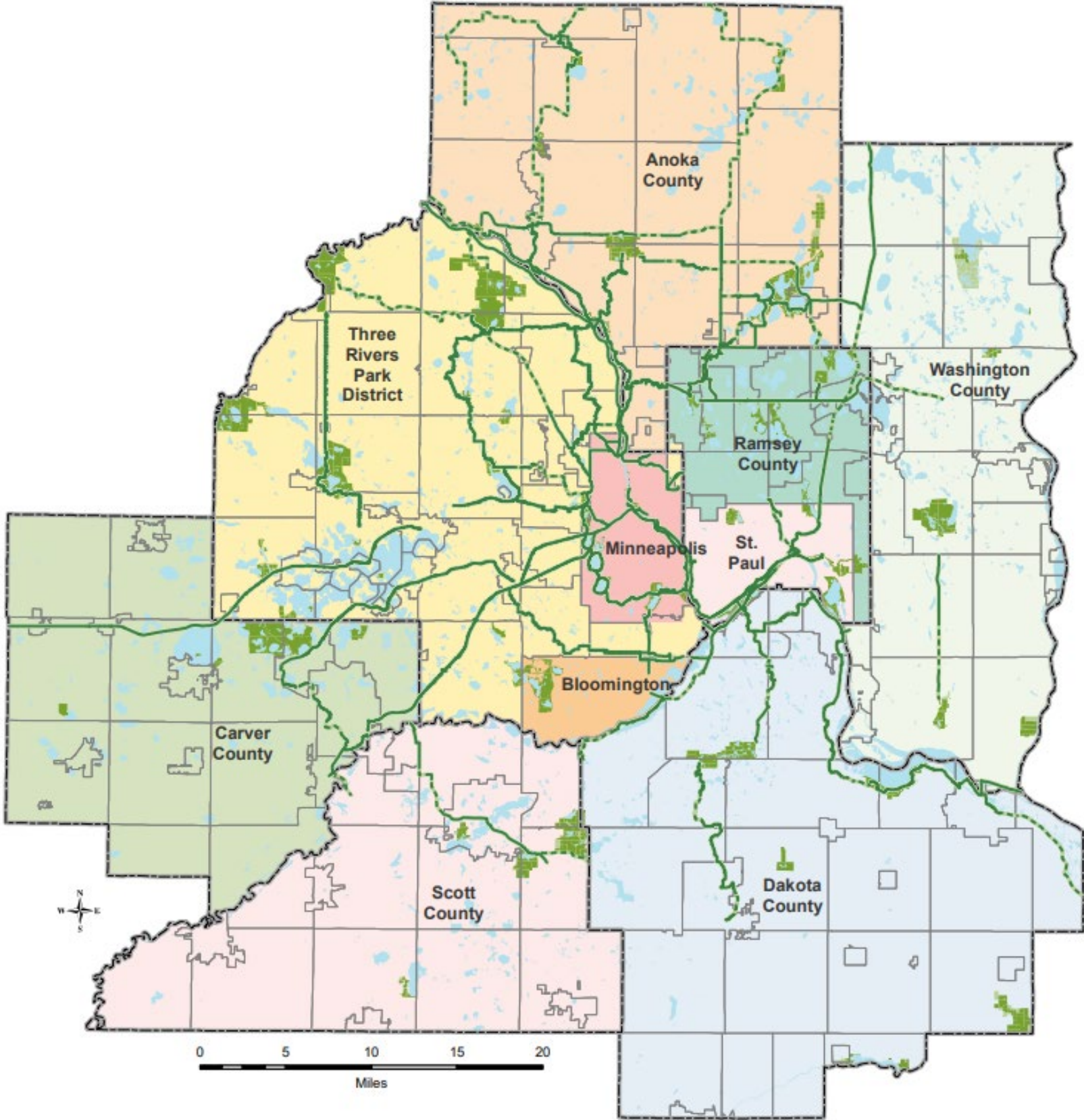
### System Plan, Natural Systems

- Support expressed for proposed sub-classifications:
  - Special Feature - Cultural Landscapes
  - Special Feature - Historical Landscapes
- Some concerns about proposed sub-classifications.

### Planning

- Support expressed for the cultural resource inventory component in long-range plan requirements.
- Some concerns about the cultural resource inventory:
  - There need to be more “guidrails” for the cultural resource inventory component. These types of inventories can be expensive.
  - Cultural resource inventory component needs more development. Propose developing further as part of workplan.

# Section two: System plan



# Section 2: New Sub-Classification - Cultural Landscapes



- Recognize and protect culturally significant landscapes including American Indian burial grounds.
- Does not require that recreation be part of the unit.
- Design parks and trails to protect significant cultural or sacred areas, limiting general public access when appropriate.

*Fishing at Phalen-Keller Regional Park in Ramsey County.*

# Section 2: New Sub-Classification – Historical Landscapes

- Recognize or protect a historically significant landscape associated with a notable design style; historic event, activity, or people; or reflects development patterns over time.
- Does not require that recreation be part of the unit.
- May be designed to protect areas of significant historic meaning to groups. This includes protecting these spaces and designing them to limit public access and foot traffic.

*Person collecting prairie seed at Baker Park Reserve.*





# Section five: Planning



# Section Five: Long-Range Plan Requirements

## Existing Plan Requirements

### *RPPP Chapter 5: Planning*

- Boundaries
- Acquisition Costs
- Stewardship plan
- Demand forecast
- Development concept
- Conflicts
- Public services
- Operations
- Partner engagement
- Public engagement and participation
- Equity analysis
- Public awareness
- Accessibility
- Natural resources

## Proposed Plan Requirements

### *RPTPH Section 5: Planning*

- Engagement
  - Demand forecast
  - Public awareness
  - Engagement, participation, and equity analysis
- Development concept  
  - Boundaries
  - Acquisition costs
  - Development concept (incl. Conflicts)
  - Accessibility
  - Operations
  - Public services
- Natural Systems
  - Stewardship Plan
  - Natural systems
  - Mississippi Corridor Critical Area

# Section Five: Long-Range Plan Amendment Processes



## Amendment Types

### Full Amendment

- Updates requiring substantial changes in development, boundaries, or telecommunications placement
- Must fulfill all long-range plan requirements and engage the public and local governments

### Focused Amendments

- Updates that only modify a subset of long-range plan requirements.
- Scoping with Council staff done prior to amendment process
- Typically, a 60-day approval process

### Administrative Process for Minor Amendments

- Updates that are minor in nature and have minimal impact on the park or trail's recreational opportunities, natural areas, or cultural resources
- Amendments do not require presentation to Council committees and are proposed to take 15 days for approval

# Section six: System protection



# System protection key changes



- **System protection policy** is largely unchanged.
  - **Action 2 Land Conversions:** Clarifies which proposals do not require an equally valuable exchange (because of benefits to unit or no impact).
  - **Action 3 Other Utilities:** Clarifies that the Council's utility easement process is consistent with other land conversion processes.

*Adult and child at Bde Maka Ska as part of Chain of Lakes Regional Park*

# Questions, discussion, advice

## Questions:

- What excites you about the new changes being proposed?
- Is there anything missing from these sections?
- What recommendations do you have for Council staff?
- What are your questions?





Thank you

**Colin Kelly**

Planning Analyst, Regional Parks and Trails  
[colin.kelly@metc.state.mn.us](mailto:colin.kelly@metc.state.mn.us)

**Tracey Kinney**

Planning Analyst, Regional Parks and Trails  
[tracey.kinney@metc.state.mn.us](mailto:tracey.kinney@metc.state.mn.us)

**Kevin Phan**

Planner, Regional Parks and Trails  
[kevin.phan@metc.state.mn.us](mailto:kevin.phan@metc.state.mn.us)

