

Business Item

Metropolitan Parks and Open Space Commission



Community Development Committee: October 20, 2025

Metropolitan Council: November 12, 2025

Business Item: 2025-245

Cleary Lake Regional Park Long-Range Plan, Scott County

District(s), Member(s):	District B, Vacant District 4, Deb Barber
Policy/Legal Reference:	Minn. Stat. § 473.313; <i>2040 Regional Parks Policy Plan</i> : Chapter 5, Planning Policy Strategy 1, Master Plans
Staff Prepared/Presented:	Tracey Kinney, Planning Analyst (651-602-1029)
Division/Department:	Community Development / Regional Planning

Proposed Action

That the Metropolitan Council:

1. Approve the Cleary Lake Regional Park Long-Range Plan.
2. Advise Scott County to consider implementing the recommendations for solar resources and population forecasts in the Advisory Comments section of the business item.

Background

Cleary Lake Regional Park is located in the south-central portion of the Regional Parks and Trails System and centrally located in Scott County. This regional park connects to the existing Big Woods and the planned Shallow Waters Regional Trails.

Cleary Lake Regional Park spans 1,045 acres and includes a single 2.5-acre inholding. The plan concentrates most improvements in areas adjacent to existing high-use zones to support increased day use, address campground compliance with Minnesota Department of Health standards, introduce new facilities that serve a broad range of demographics, and upgrade the play area to better engage young visitors of all ages.

A key focus of the plan is addressing congestion on the park's most heavily used amenity: the paved trail loop. To improve user experience and accessibility, the plan includes several new paved trail segments that expand overall capacity and offer inclusive options for visitors of all abilities.

Since the original plan was adopted in 1998, the updated long-range plan reaffirms Cleary Lake Regional Park's role as an active, amenity-rich destination where people can gather, recreate, and enjoy meaningful access to nature within a suburban regional park setting. Three Rivers Park District and Scott County will continue their partnership to operate and steward the park, combining their expertise and resources to best serve the growing population of Scott County and the surrounding region (Figures 1-3).

Rationale

As described in the Analysis section of this report, the Cleary Lake Regional Park Long-Range

Plan is consistent with the requirements of the *2040 Regional Parks Policy Plan* (RPPP) including Chapter 5, Planning Policy Strategy 1, Master Plans. The Cleary Lake Regional Park Long-Range Plan was reviewed under the *2040 Regional Parks and Trails Policy Plan* since the planning process for Cleary Lake Regional Park was initiated in October 2020 prior to the Met Council adoption of Imagine 2050 in February 2025.

Thrive Lens Analysis

On Feb. 12, 2025, the Council adopted Imagine 2050, which builds on policy direction in Thrive MSP 2040. The Cleary Lake Regional Park Long-Range Plan advances the Imagine 2050 goals of stewardship by increasing access to nature and outdoor recreation, which enhances quality of life in the region.

Funding

The total cost to develop and improve the recommendations of the Cleary Lake Regional Park Long-Range Plan is approximately \$15,703,000 with \$358,000 in acquisition costs and \$15,345,000 for development and facility improvements.

The total cost for operations and maintenance of the regional park's long-range plan is \$1,684,000 annually.

Funding sources for the plan improvements will come from a variety of sources, including the Metropolitan Council. These improvements will be subject to future Council actions.



Analysis

Planning Strategy 1 of the *2040 Regional Parks Policy Plan* requires that long range plans for regional parks address 13 items: boundaries, acquisition costs, demand forecast, development concept, conflicts, public services, operations, partner engagement, public engagement and participation, equity analysis, public awareness, accessibility, and natural resources. The following sections analyze the long-range plan against these requirements.

Boundaries

Cleary Lake Regional Park is located in the central portion of Scott County and is located in both the City of Credit River and Spring Lake Township near suburban Prior Lake, Savage, and Lakeville. This regional park connects to the existing Big Woods and the planned Shallow Waters Regional Trails.

The regional park's southern boundary is 190 Street NE and the northern boundary is Eagle Creek Avenue. To the east, Texas Avenue serves as the boundary and to the west, Revere Avenue is the boundary.

The regional park's total acreage outlined in the long-range plan is 1,045 acres, including 2.5 acres of existing inholdings (Figure 3).

Acquisition Costs

The Plan identifies one inholding parcel, with a total of 2.5 acres. This inholding has a 2022 market value estimate of \$358,300. This inholding includes approximately 75% short grasses and mixed trees and 25% maple-basswood forest; as well as a small house with a septic system. This parcel will help buffer the regional park by providing more habitat.

Stewardship Plan

Cleary Lake Regional Park is already a well-established and highly visited destination, with much of the core infrastructure in place to welcome the public. Future development will focus on enhancing access to nature while carefully managing the potential impacts of additional construction and use.

The park's most prominent natural feature is Cleary Lake, a 149-acre shallow lake with an average depth of 4.5 feet and a maximum depth of 9 feet. While the lake lies entirely within the park boundary, its watershed covers approximately 5,027 acres, extending well beyond park boundaries. As the park evolves, protecting natural resources—particularly water quality—will remain a top priority. All development will adhere to the Minnesota Pollution Control Agency's best management practices (BMPs) for stormwater management. Special attention will be given to avoiding impacts on wetlands. Where avoidance is not possible, mitigation strategies will be implemented to minimize and offset any disturbance.

The park's forestry program focuses on the stewardship of tree canopy within active use areas. This includes annual inspections for hazard trees and a cyclical pruning schedule, typically occurring every seven years, to ensure public safety and promote healthy forest conditions.

Demand Forecast

Cleary Lake Regional Park is the most visited park in Scott County, welcoming approximately 421,000 visitors annually—a number that has steadily grown alongside the increasing population of Scott County and surrounding areas (2023 Metropolitan Council Regional Park Annual Use Estimates). This growth is expected to continue, with the Metropolitan Council projecting the county's population to rise from 150,928 in 2020 to 211,750 by 2040—an increase of nearly 40%.

In response to this anticipated growth, the updated park plan is designed to expand capacity and accommodate future demand. Key improvements include expanded camping opportunities, enhanced trail systems, and increased access to water-based amenities—ensuring the park remains a vibrant, welcoming destination for years to come.



Development Concept

The development concept for Cleary Lake Regional Park was shaped by changing community demographics, the need to meet Minnesota Department of Health requirements for the campground, and valuable input gathered through extensive community engagement. The plan emphasizes trail enhancements, campground expansion, and upgrades to park amenities—all while prioritizing access to nature and minimizing impacts on natural resources (Figure 3).

Implementation will begin with bringing the existing campground into compliance with Minnesota Department of Health requirements. Subsequent phases, including campground expansion and additional improvements, will be guided by available funding and demonstrated community need.

Trails

Cleary Lake Regional Park currently offers approximately 11.2 miles of paved and unpaved trails, including a 4-mile loop around the lake and multi-use unpaved trails that serve as ski trails in winter. The park connects to the Big Woods Regional Trail to the north and the future Shallow Waters Regional Trail to the south.

Community feedback highlighted a need for more trail facilities and safer access points. In response, the plan includes a new 1-mile paved loop, a new western trailhead and parking area on Revere Avenue, a new paved connection to the south, a new hiking/skiing loop, and widening of the existing paved loop trail to better accommodate multiple users.

Campground

Campground improvements will be phased, beginning with the addition of water service, sanitation, a shower building, and a dump station to meet Minnesota Department of Health requirements. Future phases will expand the campground while maintaining a small footprint to minimize impacts on natural resources. Planned future amenities include drive-through RV sites, back-in sites for car campers and small RVs, camper cabins, vaulted toilets, trail connections, and parking (Figure 4).

Park Amenities

The plan proposes several park amenity enhancements, including upgrades to the Cleary Point day-use area, improved lake access, enhanced wayfinding, and updates to recreation spaces. The play areas will be refreshed, with new additions such as nature play, hammocking zone, and a second play space (Figure 5).

Cleary Point, currently a popular campsite, will be opened for general public use and expanded to include more picnic areas, open green space, nature play, water access, trails, exercise stations, a food truck area, and expanded fishing opportunities.

Cleary Lake is also a well-loved destination for paddling. It features a rental facility and launch area for paddle boats, kayaks, canoes, and paddleboards. The plan calls for improvements to the boat launch to better support both recreational use and programming. A new boardwalk will also be added to enhance shoreline access and offer additional fishing opportunities.

Wayfinding

Cleary Lake Regional Park has effective wayfinding signage in place. As new trails are developed, matching signage will be added and existing signs updated. A new kiosk will be installed at the proposed East side trailhead. Enhanced wayfinding is planned for the three regional trail connections to include both park and trail information. Changes at Cleary Point will require circulation adjustments, including signage updates for the new spur to the parking area.

Conflicts

Cleary Lake Regional Park is surrounded primarily by residential use with some agricultural use and small areas of commercial and industrial uses. There are no proposed land uses that are anticipated to impact the park.

The section south of CSAH 21 and CSAH 27 was only partially developed according to the 2015 County Highway 27 Corridor Study. Future impacts to the park may occur due to future county transportation department plans to accommodate more suburban development in this area of the

county. The widening of CSAH 27 would likely have impacts to the golf course and cross-country ski trails as well.

Public Services

Since the acquisition of Cleary Lake Regional Park over 50 years ago, some of the original park facilities remain operational while others have been added and revised over the years as called for by the 1979 park plan. These services include but are not limited to a visitor's center, recreation and education programs, a golf course, camping, picnicking and shelters, a play structure, beaches with aquatic activities, and trails.

The long-range plan presents a future change to the entrance to the maintenance facility, removing direct access along Highway 27/Texas Ave and creating a new connection to the maintenance facility from the main park entrance road. This will limit access points along Texas Avenue to reflect changing traffic patterns and to increase safety. A further safety improvement which will be considered in the future is re-aligning the main park entrance road with 180th Street E. This was recommended for consideration in the Scott County Highway 27 Corridor Study which was adopted in 2015 by the Scott County Board. Additionally, although Metro Transit does not connect to Cleary Lake; Scott County offers paratransit systems like SmartLink and Hop Scott.

Currently the park is not connected to city sewer or water, instead operating on well and septic systems. Scott County's plan seeks to improve the campsite's Minnesota Department of Health compliance by including the expansion of shower facilities, drinking water, and a dump station; all of which could benefit from future connections to city services.

Operations

When the plan is fully implemented, annual operations and maintenance costs are estimated to be \$1,684,000 annually (2022 dollars). Current operating costs include, but are not limited to, facility services, maintenance staffing and supplies, camping, trails and signage, environmental protection, recreational programming, and youth opportunities.

The improvements outlined in the plan are generally focused within the core of the park. Additional staffing will be needed to support the expanded campground, including seasonal workers and overnight security. Full-time maintenance staff will also be required to care for the campground, expanded picnic areas, and the new trails. Increased staffing will ensure that current maintenance including, but not limited to, mowing and trimming, beach grooming, building maintenance & cleaning, trail maintenance, sign maintenance, roads and parking lot maintenance, hazard tree removals and storm clean-ups, and snow removal all remain at satisfactory operational levels consistent with regional parks standards.

Partner Engagement

Scott County carried out a comprehensive partner engagement process to better understand the communities that use the park and to identify local needs that align with broader community plans. As part of this effort, the County collaborated with several key partners, including the cities of Credit River, Spring Lake, Jordan, Shakopee, Prior Lake, and Savage, and the Shakopee Mdewakanton Sioux Community.

The feedback gathered highlighted a deep appreciation for the park in its current form, emphasizing its importance to the community. There was also a shared recognition that continued population growth and increased use will likely place additional pressure on the park's facilities in the future.

Public Engagement and Participation

The engagement process for Cleary Lake Regional Park was designed to be inclusive and far-reaching, involving the general public, park users, underrepresented communities, local cities, and community organizations. Scott County used a variety of methods to connect with the public, including virtual and in-person meetings, open houses, pop-up events, and online engagement tools.



A key component of this process was the formation of a 40-member Resident Strategy Team (RST), which worked collaboratively over a 15-month period to provide contextualized insights and guidance for the park's future. Drawing on community perspectives, the RST developed and submitted a prioritized list of 21 recommended amenities and improvements. These included high-value items such as a natural playground, solutions for congestion along the Cleary Lake paved loop, expanded lakeshore access, evaluation of the pavilion site, additional parking, and an updated traditional playground, among others. Their input played a critical role in shaping strategic decisions and informing the overall development of the park plan.

Through this robust engagement process, three key themes emerged to guide the future of Cleary Lake Regional Park:

- Preserve what makes Cleary Lake Regional Park special
- Plan for growth and increased use
- Expand accessibility and create a welcoming experience for all users

Equity Analysis

Scott County conducted an equity analysis as part of the long-range plan. This advice received during the planning process shaped the long-range plan.

Project Data: The geographic focus for community engagement was defined by three key variables: a 20-minute drive time to Cleary Lake Regional Park, the Scott County jurisdictional boundary, and the broader regional context. Overall, park visitors tend to reflect the general community demographics; however, certain groups—including children, seniors, and residents with annual household incomes of \$75,000 or less—are currently underrepresented at Cleary Lake Regional Park.

Looking ahead, Scott County is projected to experience continued population growth, with seniors and residents of color expected to represent a growing share of the community. These demographic shifts highlight the importance of planning for a park that is inclusive and welcoming to all residents.

Public Engagement: Scott County staff made intentional efforts to connect with underrepresented community members throughout the engagement process. This included outreach to Hispanic/Latino residents, individuals with disabilities, children and seniors, lower-income households, and non-white community members. Engagement methods included virtual and in-person meetings, open houses, pop-up events, and online platforms. To ensure diverse representation, staff encouraged applications from individuals across a wide range of backgrounds for the Resident Strategy Team (RST). They also extended personal invitations to members and representatives of culturally diverse communities. Partner organizations engaged during this effort included:

- Grainwood Senior Homes
- O.W.L.S. (Old Wise Lutherans)
- MN Outdoor Latino
- International Walking Club
- ProAct Inc. (disability services)
- Friends, Family, Neighbors
- Scott County Family Resource Centers
- Shakopee Diversity Alliance
- Scott County Health & Human Services
- Scott County Statewide Health Improvement Project

Community Event & Key Takeaways Highlights

Open House — October 15, 2021

Scott County staff hosted an open house event to share information with residents about Cleary Lake Regional Park, the regional parks and trails system, and ongoing long-range planning efforts. To foster meaningful engagement, staff introduced a “punch card” activity that encouraged attendees to visit six themed stations. Each completed station earned a punch, and participants who visited all six stations



received a discount at the on-site taco food truck. Staff from Richardson Nature Center and the Outdoor Recreation School further enriched the event by leading interactive, hands-on programming that made the experience more engaging and enjoyable for attendees of all ages.

Key feedback included:

- Cleary Lake Regional Park is considered a "hidden gem," and visitors expressed a desire to preserve its natural feel.
- Participants showed strong interest in snow-making capabilities and maintaining or expanding cross-country ski trails.
- There were multiple comments in support of increasing natural habitat areas—especially trees—and offering more nature-based programming.

Pupusas in the Park

To creatively engage Scott County's Latino community, staff organized a culturally focused event called Pupusas in the Park, in partnership with a local Hispanic church. The event featured free pupusas, buy-one-get-one coupons for Foot Golf at Cleary Lake Regional Park, yard games, and access to the volleyball courts. In exchange for completing a brief survey—available in both English and Spanish—attendees received these offerings. This approach provided a fun, welcoming atmosphere while gathering valuable community input.

What attendees said they love about Cleary (Top 3):

- Walking and biking trails
- Natural beauty of the park
- The lake and lake-related activities

What would make them visit more often (Top 3):

- If the park were closer to home
- More food-related or themed community events
- Expanded lakeside amenities and activities

Evaluation Summary

The community engagement process for Cleary Lake Regional Park played a pivotal role in shaping the final plan, resulting in a more responsive and inclusive vision for the park—one that meets the needs of residents today and into the future. Public input directly influenced several key improvements included in the plan, such as:

- Expanded trail capacity
- Additional trail connections and new park access points
- Enhanced lakeside amenities
- Activities designed for all age groups
- New and upgraded play areas
- Camper cabins to support overnight stays
- Expanded nature-based and recreation programming
- Improved shoreline access
- Realignment of the park entrance for better traffic flow and access

Public Awareness

Scott County and the Three Rivers Park District Marketing & Community Engagement team manage the park's marketing, promotion, and event planning. Effective marketing and outreach tools used include, but are not limited to, events calendars, maps, digital and social media, direct mail, press releases, a centralized reservation system, brochures, advertising and on-site promotion. Promotional pieces highlight how to get to the park on foot, bike and car.

The park collaborates with a wide array of community, business and government organizations to promote its facilities, programs and services, and to educate the public about its resources. This includes collaboration with organizations like Scott County SCENE, the Metropolitan Council Regional Parks System, the State Office of Tourism and other local partners.



A concerted focus is placed on continuing to explore non-traditional print and web media including trusted community messengers, concierge services, translated materials, print advertising in cultural newspapers, culturally relevant social media channels and cultural radio stations and accessible digital calendars. Staff continue to improve program participation for underrepresented community members/groups by modifying registration processes and tiered program registration and drop-in programming.

Accessibility

Scott County is committed to providing access and recreational opportunities to all people, including persons with disabilities, BIPOC community members, and other special-population groups. This commitment is met through appropriate facility design, programming considerations, and by actively addressing potential barriers to participation. All planned regional park facilities will be designed to accommodate individuals with disabilities and developed in accordance with Americans with Disabilities Act (ADA) standards and guidelines.

Scott County does not charge entrance fees for its regional parks; therefore, the regional parks are available for all users to enjoy regardless of financial status. While the planned camping expansion is a fee-based activity, the remaining facilities proposed in this plan – such as the trails and overlook areas - are provided to the community with no user fees.

Natural resources

Cleary Lake Regional Park is defined by its diverse and scenic natural features, including Cleary Lake—a large, shallow lake approximately 149 acres in size—numerous wetlands, and a mix of woodlands, grasslands, and forests. Cleary Lake is the park’s most prominent natural feature and serves as the focal point for many recreational activities, including swimming, boating, picnicking, and use of the paved trail loop that circles the lake.

Future development within the park will place a strong emphasis on protecting these natural resources, particularly water quality. All projects will align with the Minnesota Pollution Control Agency’s best management practices (BMPs) for stormwater management. Priority will be given to avoiding impacts to wetlands; where impacts are unavoidable, efforts will focus on minimizing and mitigating them as necessary.

Beyond the lake, the park’s extensive mix of forests, grasslands, and wetlands provides critical habitat for a wide range of wildlife species. These natural areas—though varying in ecological integrity—form the foundation of the park’s appeal and support for the growing demand for outdoor recreation and environmental education.

To ensure safety and the long-term health of the landscape, the tree canopy in active use areas is inspected annually for hazards and pruned on a rotating seven-year cycle.

Other Council Policies and Systems – Advisory Comments

Community Development – Forecasts – (Todd Graham, 651-602-1322)

Scott County provides a demand forecast analysis on p. 1; the analysis includes a forecast of 211,750 population in 2040. This was the Thrive MSP 2040, which was retired and replaced in 2025 with the Council’s adoption of Imagine 2050. Future planning can use the updated forecast at <https://metro council.org/data>

Community Development – Solar Resources and Access Protection – (MacKenzie Young-Walters, 651-602-1373)

While there are no explicit requirements for regional park and trail long range plans to address planning for the protection and development of access to direct sunlight for solar energy systems, Council staff recommend, in keeping with the goals outlined in 2016 Three Rivers Park District Sustainability Plan, that Scott County and Three Rivers Park District investigate the feasibility of including electric vehicle

charging stations in the newly proposed parking area and integrating solar panels into the proposed multi-purpose recreational building. Both elements would reduce the park's dependence on and consumption of fossil fuels, as well as providing opportunities to educate visitors on the park's commitment to sustainability.

Environmental Services – Wastewater Services (Roger Janzig, 651-602-1119)

There are no MCES facilities in the vicinity of the Scott County and Three Rivers Cleary Lake Regional Park. The Park is served by individual or subsurface sewage treatment systems (ISTSS or SSTSS); therefore, there is no impact to the Metropolitan Disposal System.



Figure 1. Cleary Lake Regional Park location in the Regional Parks and Trails System

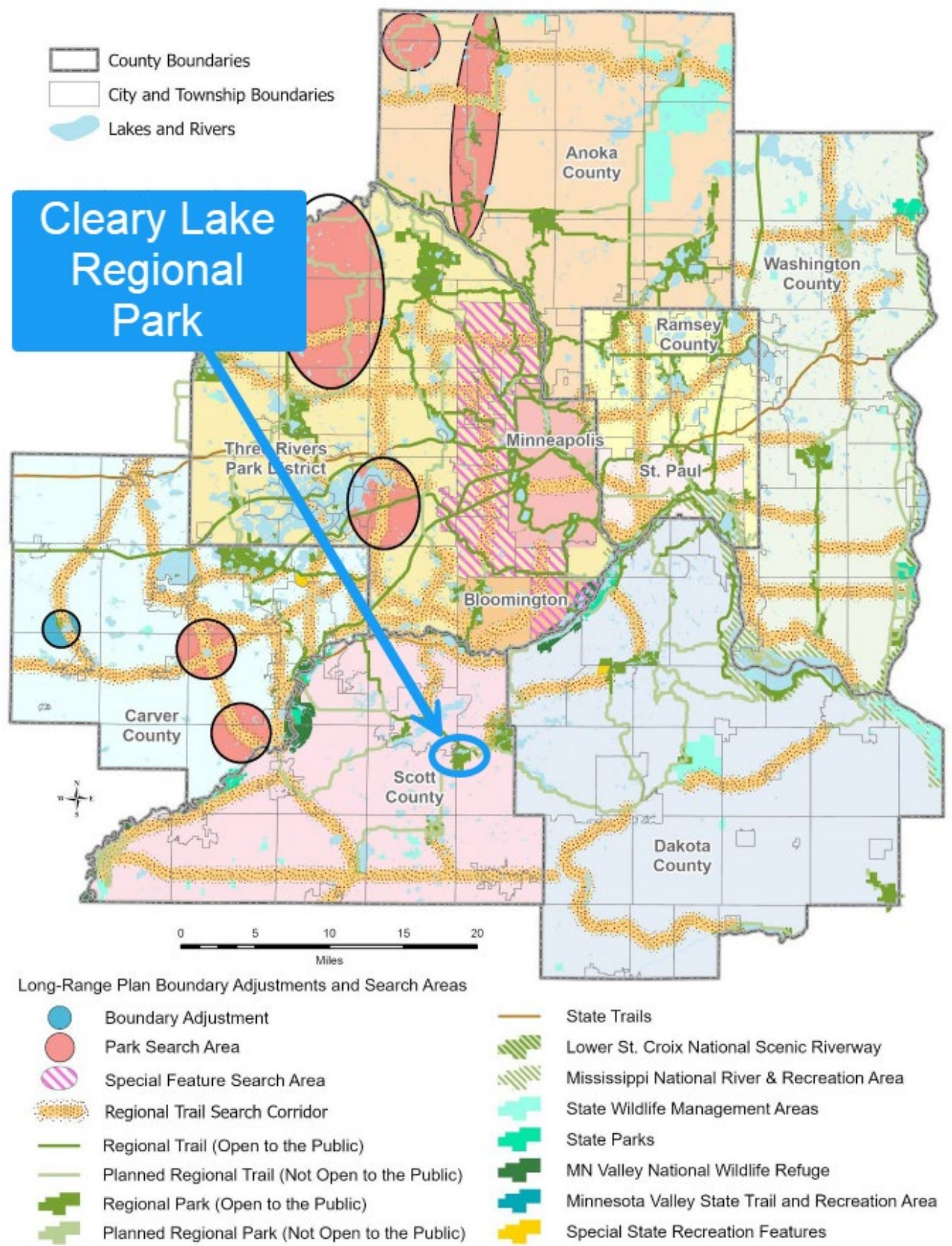
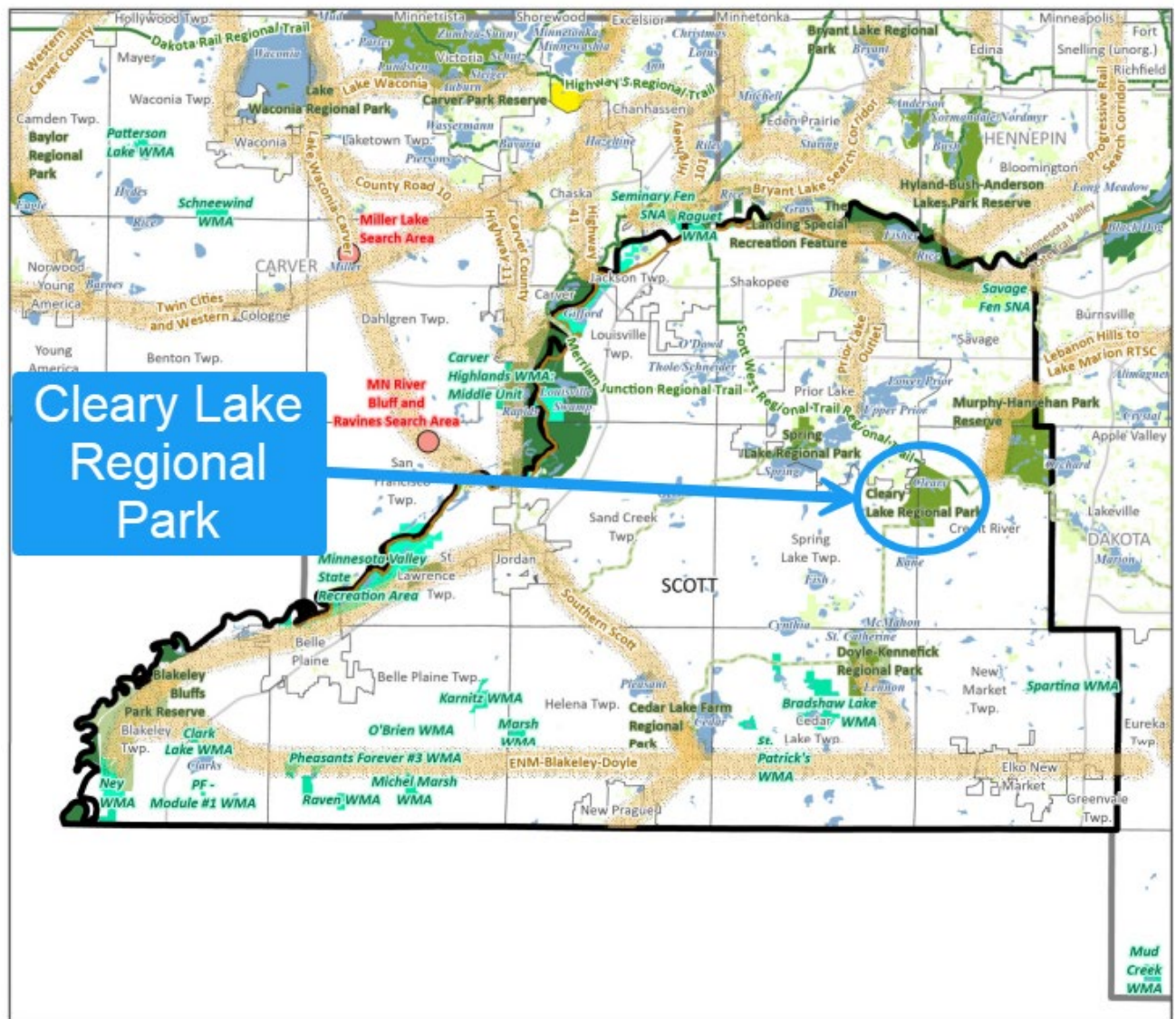


Figure 2. Cleary Lake Regional Park location in Scott County



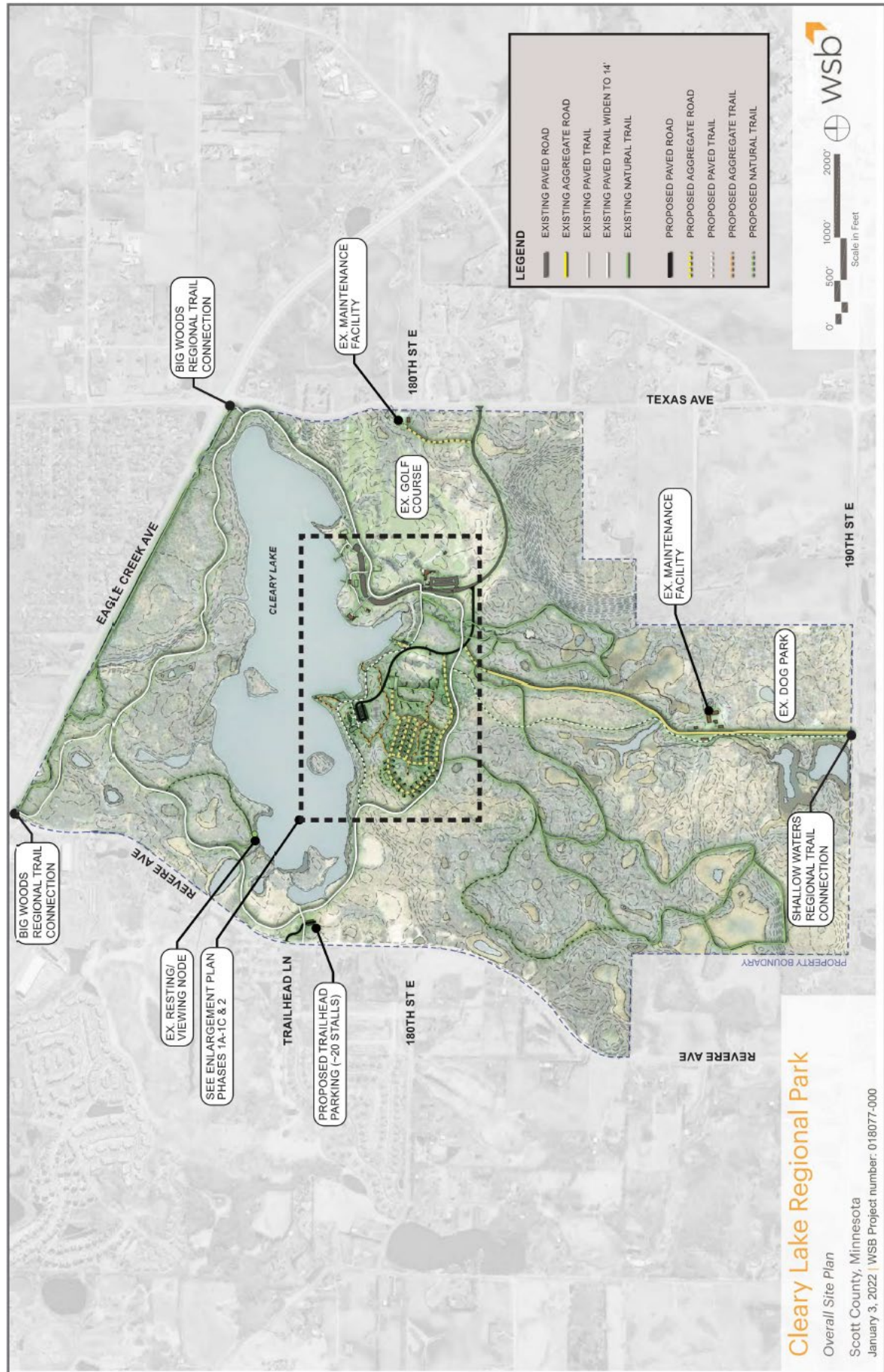
Regional Parks and Trails Systems

- Boundary Adjustment
- Search Area
- ▨ Special Feature Search Area
- ▨ Regional Trail Search Corridor
- Regional Trail (Open to the Public)
- Planned Regional Trail (Not Open to the Public)
- Regional Park (Open to the Public)
- Planned Regional Park (Not Open to the Public)

Other State and National Features

- State Trails
- State Parks and Recreation Areas
- State Wildlife Management Areas
- Scientific and Natural Areas
- Special State Recreation Features
- Other Parks, Preserves, Refuges and Natural Areas
- ▨ Lower St. Croix National Scenic Riverway
- ▨ Mississippi National River & Recreation Area
- MN Valley National Wildlife Refuge

Figure 3: Cleary Lake Regional Park Development Concept Plan



13



Figure 5: Park Improvements - Phase Two Concept Plan



THREE RIVERS PARK DISTRICT

REGULAR BOARD MEETING

August 15, 2024

Commissioners Present: John Gibbs, Chair; Marge Beard, Jan Guenther, Erin Kolb, Louise Segreto and Jesse Winkler

Commissioners Absent: Jennifer DeJournett

Staff Present: Boe Carlson, Superintendent; P. Freeman, K. Grissman, M. Heurung, H. Koolick, K. Lynch, A. Olson, E. Quiring, A. Rexine, S. Shurson, L. Skinner, S. Spicer-Zimmerman, and J. Vlaming

1. OPENING BUSINESS

1A. Call to Order

Board Chair John Gibbs called the meeting to order at the Administrative Center, Board Room, 3000 Xenium Lane North, Plymouth, MN at 5:02 p.m.

1B. Pledge of Allegiance

1C. Roll Call

2. APPROVAL OF AGENDA

MOTION by Winkler, seconded by Segreto, TO APPROVE THE AGENDA OF THE AUGUST 15, 2024, REGULAR BOARD MEETING.

All ayes, no nays, **MOTION ADOPTED**

3. COMMUNICATIONS

3A. People Wishing to Address the Board

(None)

3B. Special Matters: Acknowledgement of Donations

3C. Superintendent's Report

Superintendent Carlson reported on the following item(s):

- Associate Superintendent Luke Skinner provided an update on the Legislative-Citizen Commission on Minnesota Resources (LCCMR) selection of the following two grant proposals for funding consideration by the Legislature from the Environment and Natural Resources Trust Fund (ENRTF): 1) Mississippi Gateway Shoreline Stabilization and Fishing Improvements; and 2) Planning for Long-Term Natural Resources Protection.



Regular Board Meeting

- 2 -

August 15, 2024

- *Update on Beebe Lake property and partnership with Wright County.*
- *The Joint Board Meeting with Scott County has been scheduled for 11:30 a.m. on Monday, September 23, 2024, at Doyle-Kennefick Regional Park in Elko-New Market, MN. Commissioners were asked to contact the Superintendent if they have a conflict with this date.*

4. ROUTINE BUSINESS

MOTION by Segreto, seconded by Guenther, TO APPROVE ROUTINE BUSINESS ITEMS AS FOLLOWS:

4A. Receive the Second Quarter Public Safety Incident Report

NO ACTION REQUIRED.

4B. Receive Mississippi Gateway Regional Park Construction Progress Update

NO ACTION REQUIRED.

4C. Riley Purgatory Bluff Creek Watershed District Maintenance Agreement for Hyland Lake Park Reserve Boat Ramp Road and ADA Improvements

MOTION TO AUTHORIZE THE BOARD CHAIR AND SUPERINTENDENT TO ENTER INTO A MAINTENANCE AGREEMENT WITH THE RILEY PURGATORY BLUFF CREEK WATERSHED DISTRICT FOR THE HYLAND LAKE PARK RESERVE BOAT RAMP ROAD AND ADA IMPROVEMENT PROJECT IN THE CITY OF BLOOMINGTON.

4D. MnDOT Authorization to Administer Federal Funds for the Bassett Creek Regional Trail Gap and Duluth Street Extension Project

MOTION TO ADOPT RESOLUTION NO. 24-07 AUTHORIZING THE BOARD CHAIR AND SUPERINTENDENT TO ENTER INTO AGENCY AGREEMENT NO. 105507 WITH THE MINNESOTA DEPARTMENT OF TRANSPORTATION TO ACT AS THE AGENT FOR THREE RIVERS PARK DISTRICT IN ACCEPTING FEDERAL AID FUNDS FOR THE BASSETT CREEK REGIONAL TRAIL GAP AND DULUTH STREET EXTENSION PROJECT IN GOLDEN VALLEY, MN (STATE PROJECT 091-090-088).

4E. Lake Minnetonka Regional Trail Trailhead Agreement with Tonka Bay

MOTION TO ENTER INTO TRAILHEAD AGREEMENT WITH THE CITY OF TONKA BAY FOR TRAILHEAD IMPROVEMENTS AND LOCAL TRAIL CONNECTION AT MANITOU PARK ON THE LAKE MINNETONKA REGIONAL TRAIL.

4F. Hopkins Depot Permit Agreement Amendment with Metropolitan Council and Hopkins

MOTION TO APPROVE AMENDMENT NUMBER ONE TO PERMIT AGREEMENT (TRAILHEAD AGREEMENT HOPKINS DEPOT 2007) WITH THE METROPOLITAN COUNCIL AND CITY OF HOPKINS.

4G. Approval of the Hennepin County Agreement for Dakota Rail Trail Crossing Improvements on County Road 15 in Mound

MOTION TO APPROVE HENNEPIN COUNTY AGREEMENT #PW 29-06-23 FOR DAKOTA RAIL REGIONAL TRAIL CROSSING IMPROVEMENTS ON COUNTY STATE AID HIGHWAY 15 IN THE CITY OF MOUND.

4H. Resolution of Support for LCCMR Grant Proposal – Mississippi Gateway Shoreline Stabilization and Fishing Improvements

MOTION TO APPROVE RESOLUTION NO. 24-08 IN SUPPORT OF A LEGISLATIVE CITIZENS COMMISSION ON MINNESOTA RESOURCES GRANT APPLICATION FOR \$735,000 TO BE USED FOR SHORELINE STABILIZATION AND FISHING IMPROVEMENTS AT MISSISSIPPI GATEWAY REGIONAL PARK.

4I. Board Minutes of July 18, 2024

MOTION TO APPROVE THE MINUTES OF THE JULY 18, 2024, REGULAR BOARD MEETING.

4J. Approval of Claims for the Period Ended August 8, 2024

MOTION TO APPROVE PAYMENT OF CLAIMS AS RECOMMENDED BY THE SUPERINTENDENT FOR THE PERIOD ENDED AUGUST 8, 2024, IN THE AMOUNT OF \$8,108,745.73.

Beard Aye
DeJournett Absent

Guenther Aye
Kolb Aye
Segreto Aye

Winkler Aye
Gibbs, Chair Aye

MOTIONS AND RESOLUTIONS ADOPTED**5. CURRENT BUSINESS****5A. Acquisition Funding Background, Status Update, and Projections**

No action required; this item was presented by Director of Planning Kelly Grissman for information and discussion.

5B. Diamond Lake Regional Trail Acquisition Opportunity

MOTION by Guenther, seconded by Winkler, TO ENTER INTO A PURCHASE AGREEMENT IN THE AMOUNT OF \$650,000 FOR THE ACQUISITION OF 17700 117TH AVENUE NORTH IN DAYTON ALONG THE PROPOSED DIAMOND LAKE REGIONAL TRAIL (PARCEL 3012022440001); TO ENTER INTO AN ACQUISITION REIMBURSEMENT GRANT WITH THE METROPOLITAN COUNCIL; AND TO ESTABLISH A PROJECT BUDGET OF \$700,000 WITH LOCAL FUNDING FROM THE LAND ACQUISITION, DEVELOPMENT, AND BETTERMENT FUND.

All ayes, no nays, **MOTION ADOPTED**

5C. West Mississippi River Regional Trail Acquisition Opportunity

MOTION by Kolb, seconded by Guenther, TO APPROVE A PURCHASE AGREEMENT IN THE AMOUNT OF \$1,600,000 FOR THE ACQUISITION OF PROPERTY FOR THE WEST MISSISSIPPI RIVER REGIONAL TRAIL OFF OF DAYTON RIVER ROAD (PIDS 05-120-22-22-0003, 06-120-22-11-0019, 06-120-22-14-0001, 06-120-22-14-0002) IN THE CITY OF DAYTON; TO ENTER INTO AN ACQUISITION REIMBURSEMENT GRANT WITH THE METROPOLITAN COUNCIL; PURSUE ROAD VACATION WITH CITY OF DAYTON; AND TO ESTABLISH A PROJECT BUDGET IN THE AMOUNT OF \$2,000,000 WITH LOCAL FUNDING FROM THE LAND ACQUISITION DEVELOPMENT AND BETTERMENT FUND.

All ayes, no nays, **MOTION ADOPTED**

5D. Baker Park Acquisition Opportunity in Medina

MOTION by Winkler, seconded by Guenther, TO AUTHORIZE THE SUPERINTENDENT TO:

- CONDUCT AN APPRAISAL AND NEGOTIATE A PURCHASE AGREEMENT FOR PARCELS 0711823120001 AND 0711823110002 IN MEDINA, HENNEPIN COUNTY, AND
- UPDATE THE DRAFT BAKER PARK RESERVE LONG-RANGE PLAN TO INCLUDE LANGUAGE INDICATING THREE RIVERS INTEREST IN ACQUIRING ADJACENT OR NEARBY LAND FROM WILLING SELLERS FOR NATURAL RESOURCE PROTECTION AND/OR ADDITIONAL RECREATION DEVELOPMENT AND TO MODIFY THE PARK LONG-RANGE PLAN BOUNDARY TO INCLUDE PARCELS 0711823120001 AND 0711823110002 IN MEDINA MN, HENNEPIN COUNTY SUBJECT TO SUCCESSFUL NEGOTIATION OF A PURCHASE AGREEMENT.

All ayes, no nays, **MOTION ADOPTED**

5E. Cleary Lake Regional Park Long Range Plan

Alyssa Olson, Park Planner, provided a PowerPoint presentation (on file) and stood for Commissioners' questions along with Patty Freeman, General Manager of Scott County Parks.

MOTION by Winkler, seconded by Kolb, TO APPROVE THE DRAFT CLEARY LAKE REGIONAL PARK LONG RANGE PLAN AND AUTHORIZE THE SUPERINTENDENT TO:

1. RELEASE THE DRAFT LONG RANGE PLAN FOR PUBLIC REVIEW AND COMMENT; AND
2. SOLICIT LONG-RANGE PLAN APPROVAL FROM THE METROPOLITAN COUNCIL.

All ayes, no nays, **MOTION ADOPTED**

Regular Board Meeting

- 5 -

August 15, 2024

5F. Budget Information and Discussion

No action required; this item was presented by Howard Koolick, Director of Finance/CFO, for information and discussion.


6. ANNOUNCEMENTS

6A. Commissioner Announcements/Proposed Future Discussion Topics


Commissioner Winkler thanked the Police Chief and Superintendent for including the Public Safety Incident Report in the Board Packet for today's meeting.

7. ADJOURNMENT

Chair Gibbs adjourned the meeting at 7:39 p.m.



John Gibbs, Board Chair



Bob Carlson, Superintendent