



Cleary Lake Regional Park Long-Range Plan, Scott County

Business Item 2025-245

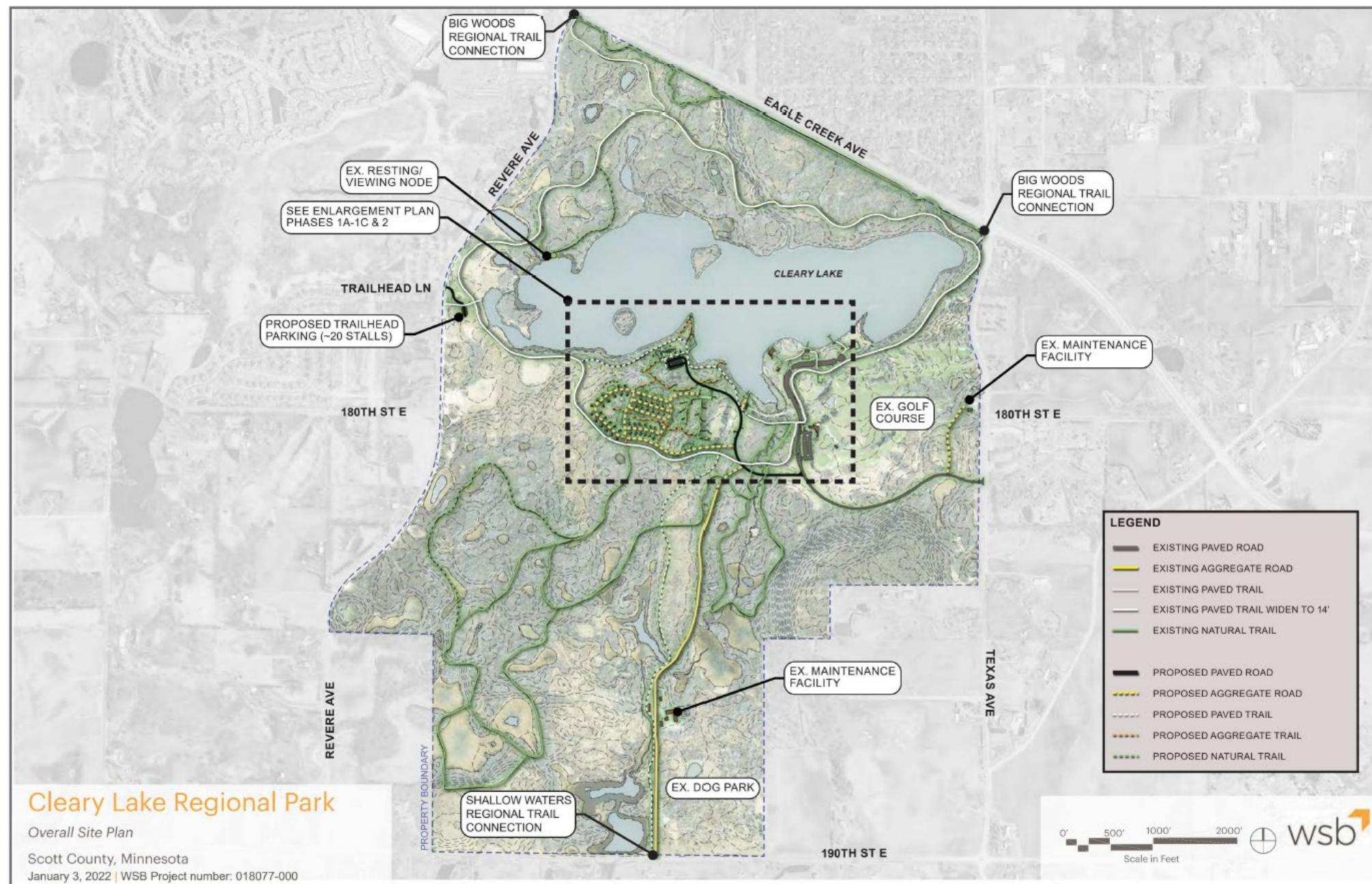
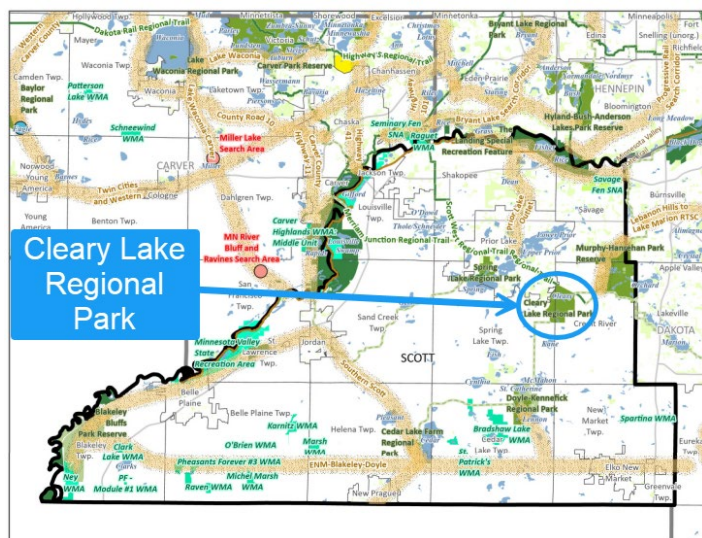
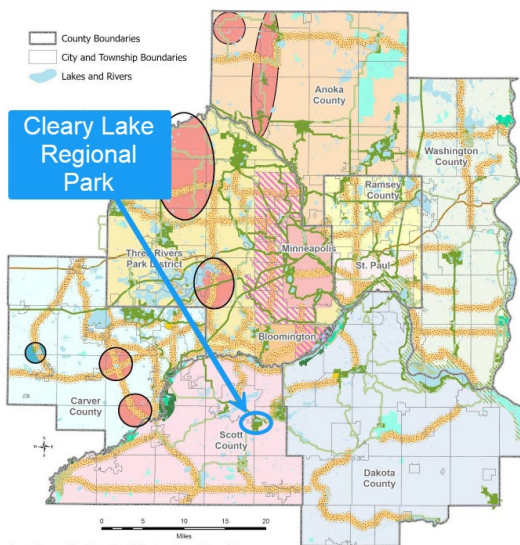
Metropolitan Parks and Open Space Commission



October 2, 2025

Tracey Kinney

Cleary Lake Regional Park Long-Range Plan



Equity Analysis

Focused Engagements:

- Hispanic/Latino Community Members
- Individuals with Disabilities,
- Children and Seniors,
- Lower-Income Households
- Non-White Community Members

Advice Shaped the Plan:

Open House 10/15/2021

- Preserve its natural feel.
- Participants showed strong interest in snow-making capabilities and maintaining or expanding cross-country ski trails.

Pupusas in the Park

- Love the walking and biking trails, natural beauty, and lake-related activities.
- Would visit more often if the park were closer to home, had more food-related community events, and expanded lakeside amenities.



Engagement at Cleary Lake Regional Park

Public and Partner Engagement



Public Engagement Themes

- Preserve what makes Cleary Lake Regional Park special.
- Plan for growth and increased use.
- Expand accessibility and create a welcoming experience for all users.

Partner Engagement

Agencies Engaged: City of Credit River, City of Spring Lake, City of Jordan, City of Shakopee, City of Prior Lake, City of Savage, and the Shakopee Mdewakanton Sioux Community.

The main picnic area at Cleary is popular and often very busy.

Development Concept



Phase 1 - Campground Upgrade

- Phase 1 meets Minnesota Department of Health requirements
 - Adds water service, sanitation, shower building, and a dump station
- Future phases plan for a full build out with a full range of camping options; as well as vaulted toilets, trail connections, and parking.

Development Concept



Park-wide Improvements

- Adds a 1-mile of paved loop to 11.2 miles of paved and unpaved trails
- New western trailhead and parking area on Revere Avenue
- Improves boat launch
- Adds new kiosk at East side trailhead

Cleary Point Expansion

- Currently a popular campsite, will be opened for general public use
- Adds more picnic areas
- Adds nature play area
- Enhances water access and fishing opportunities

Natural Resources



Natural Resources and Stewardship

- Cleary Lake—a large, shallow lake approximately 149 acres in size—numerous wetlands, and a mix of woodlands, grasslands, and forests
- Stormwater management best practices
- Monitoring water quality and vegetation in surface waters
- Tree canopy in active use areas is inspected annually for hazards and pruned on a rotating seven-year cycle.

Rustic campsite located in pine trees.

Costs



Total Costs

Development and improvements: \$15,345,000

Acquisitions: \$358,000

Operations & maintenance: \$1,684,000 annually

Children looking at leaves.

Rationale for Proposed Action

The Baker Park Reserve Long Range Plan is consistent with the requirements of the:

- 2040 Regional Parks Policy Plan
 - Chapter 5, Planning, Strategy 1
 - Other Council policies



Adults enjoying time at a table in Cleary Lake Regional Park.

Proposed Action



That the Metropolitan Council:

1. Approve the Cleary Lake Regional Park Long-Range Plan.
1. Advise Scott County to consider implementing the recommendations for solar resources and population forecasts in the Advisory Comments section of the business item.

Child playing in a park.

Thank you

Tracey Kinney

Planning Analyst, Community Development



Adults kayaking in Cleary Lake.