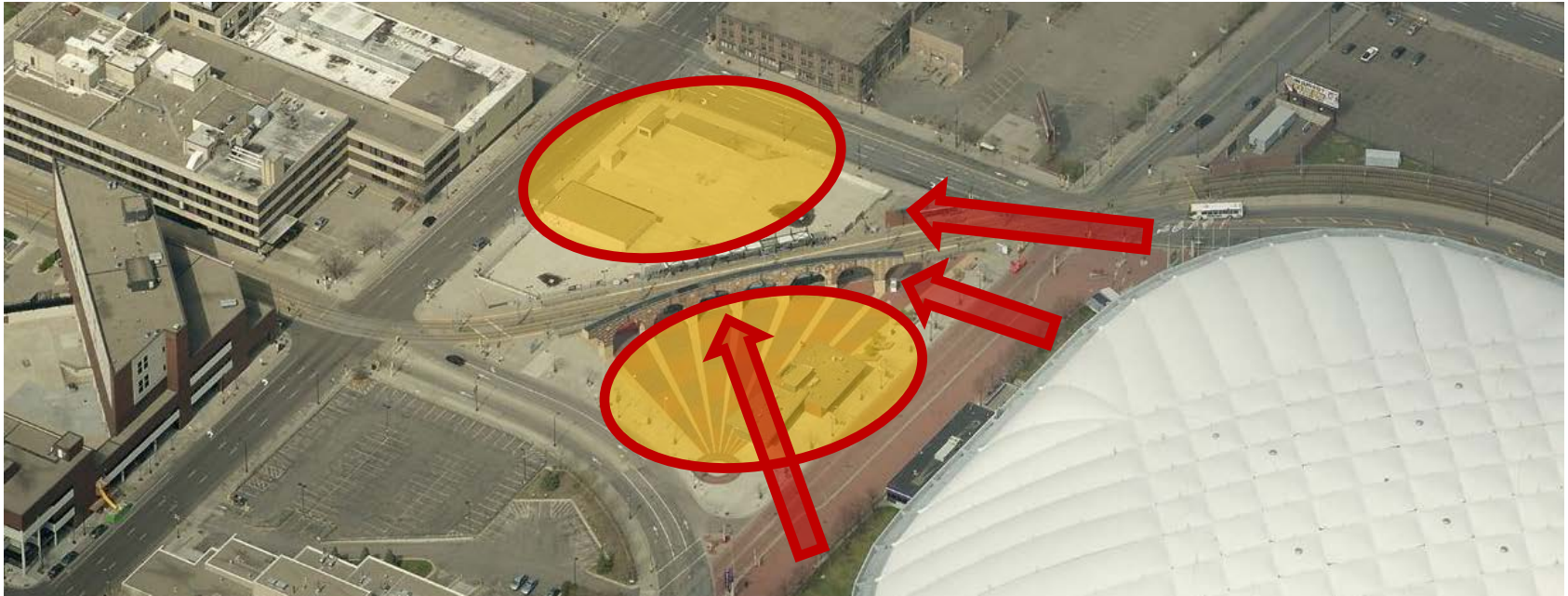


# Downtown East Transportation Accessibility Advisory Committee



**Carol Hejl, Planning  
Engineering & Facilities**  
Metro Transit



- Capacity for queuing of customers
  - 40% transit mode split target
  - 26,000+ customers w/ Southwest & Bottineau LRT
- Pedestrian access & safety – especially at Chicago & 4th Street



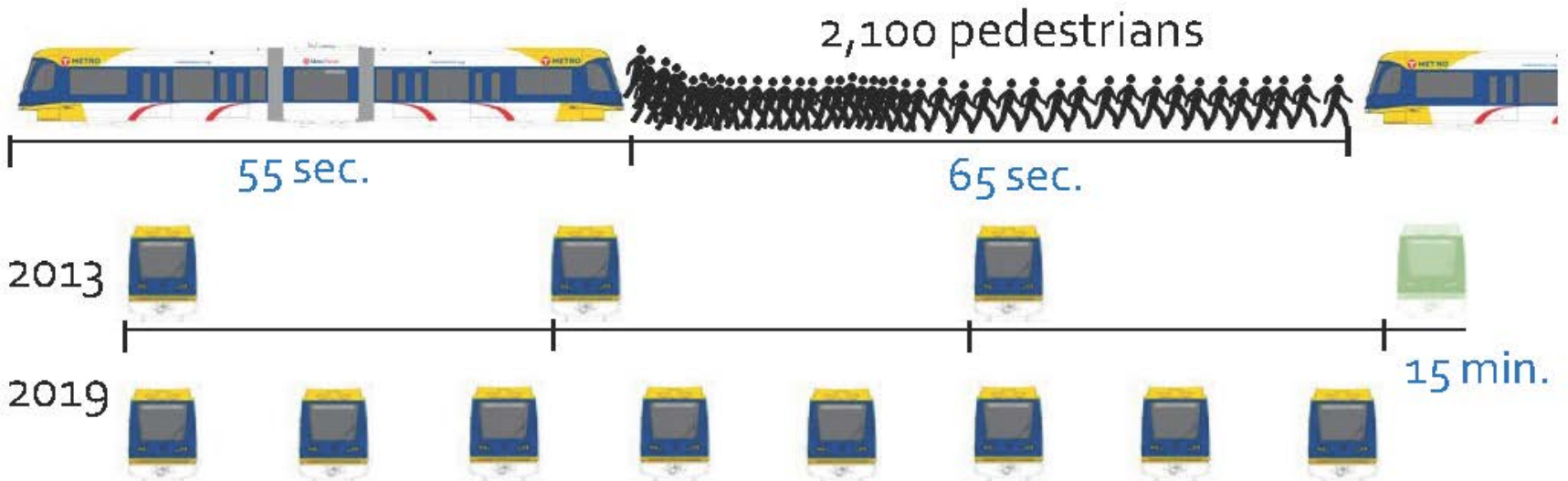
## LRT Operations

- Regular Revenue Service = 5 minute combined headways
  - A train will pass through the intersections of 4th and Chicago Avenue and 5th Street and Park Avenue every 2.5 minutes on average
- Large Event “special” trains
  - Increased frequency = train passing intersection every 2 minutes on average

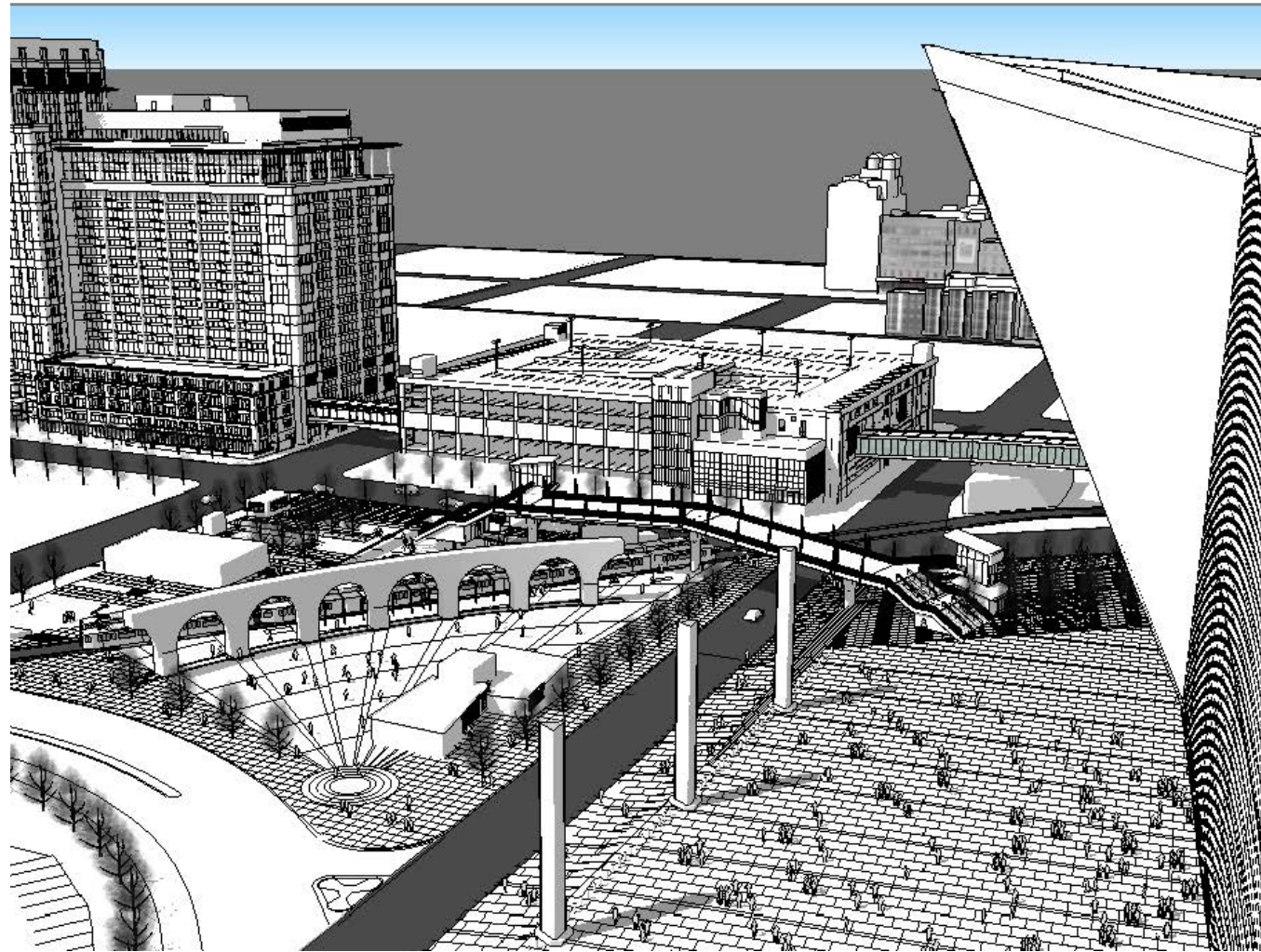
# Pedestrian LRT Crossing



12 trains per hour per direction  
+ 5 special event trains  
= Average 120 seconds headway (two-way)



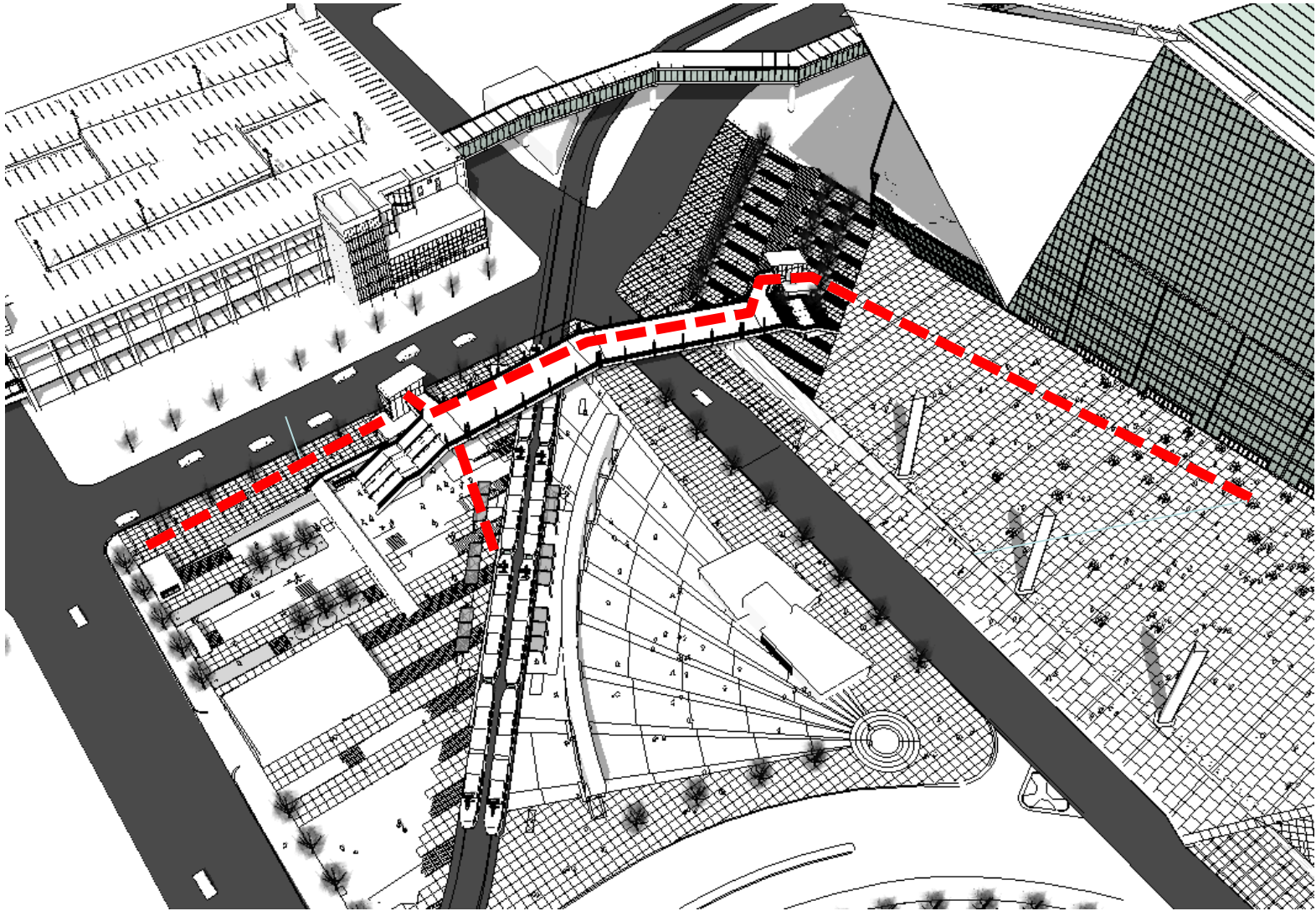
# Pedestrian Bridge



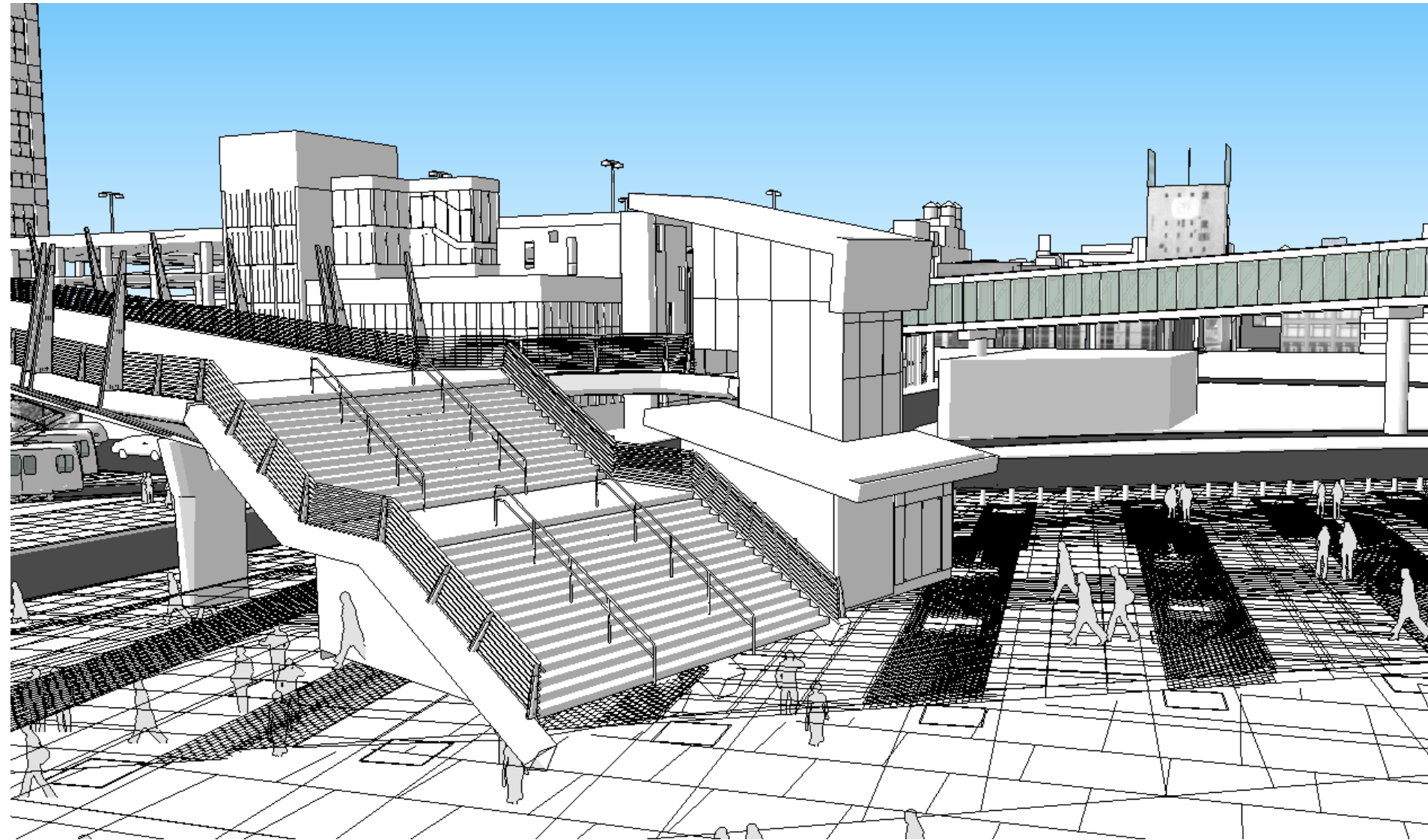
## Bridge Dimensions

- Length 240' from elevator to elevator
- Middle High Point of Bridge 30' 5"
- 5% Slope Towards Ends
- 17' 3" Tall at East
- 18' 1" Tall at West

# Limited Mobility Travel Path



# View of east stairs and tower



# View of Bridge Slope

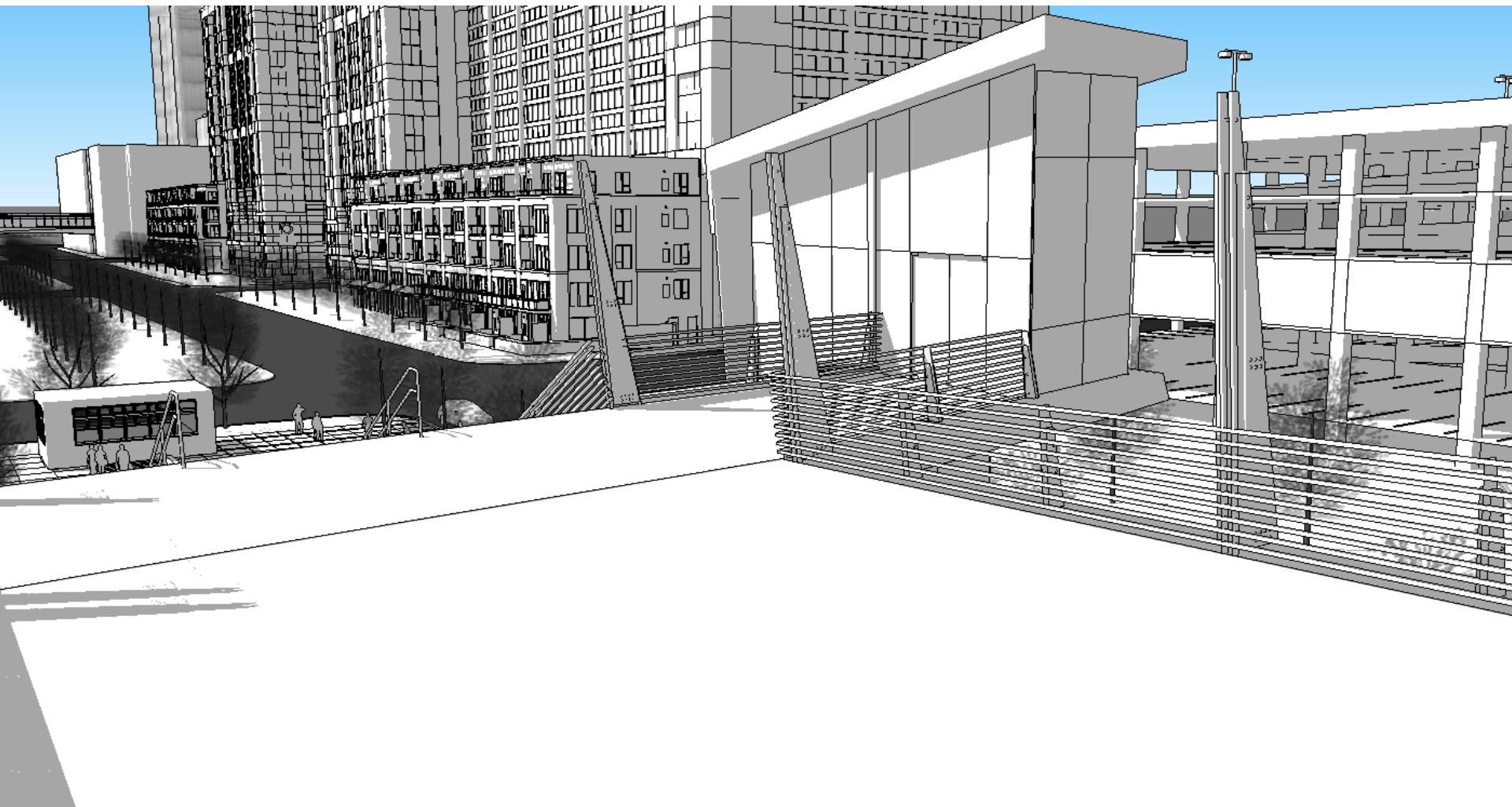




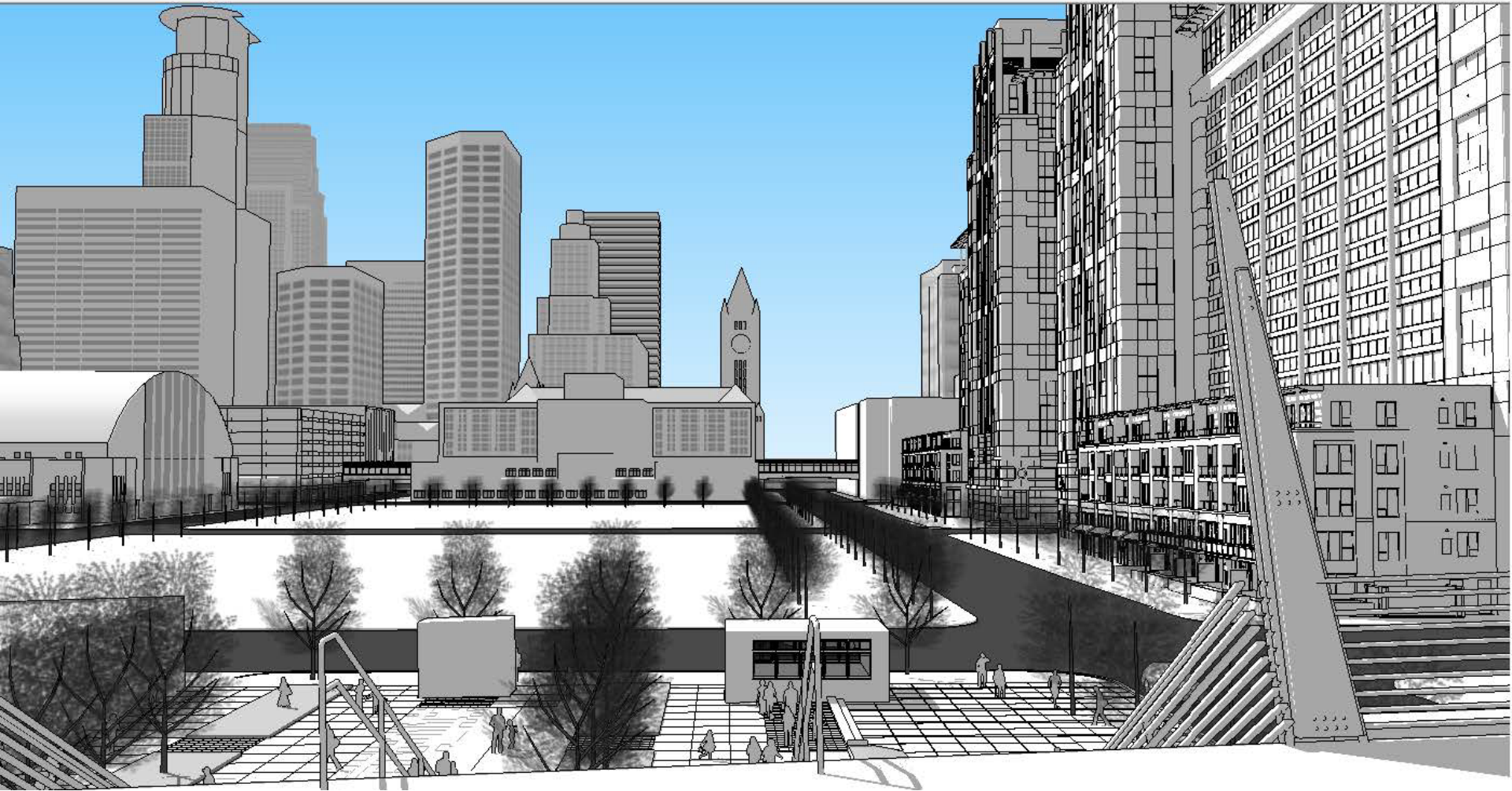
# View of East Elevator Tower



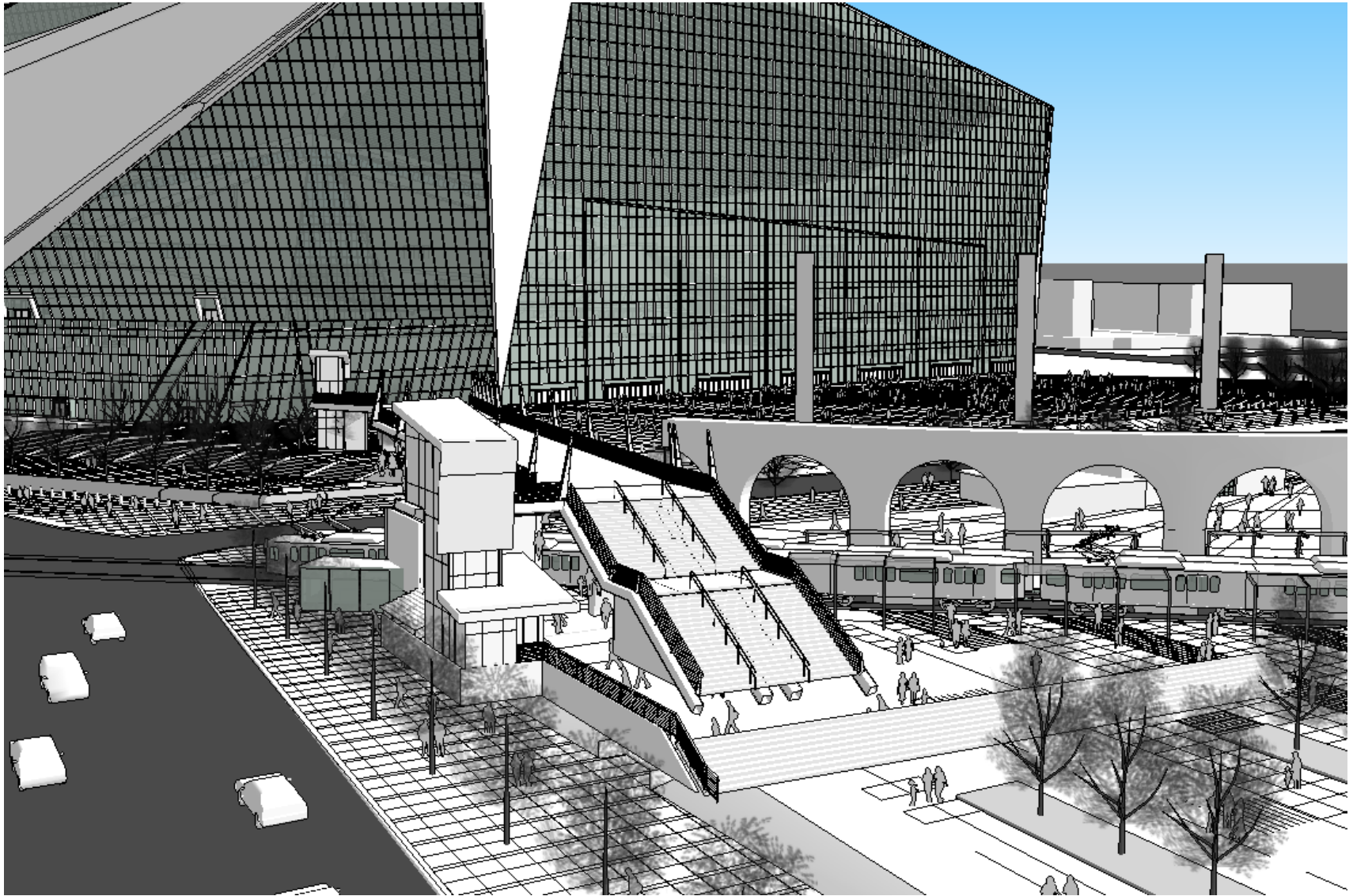
# View of West Elevator Tower



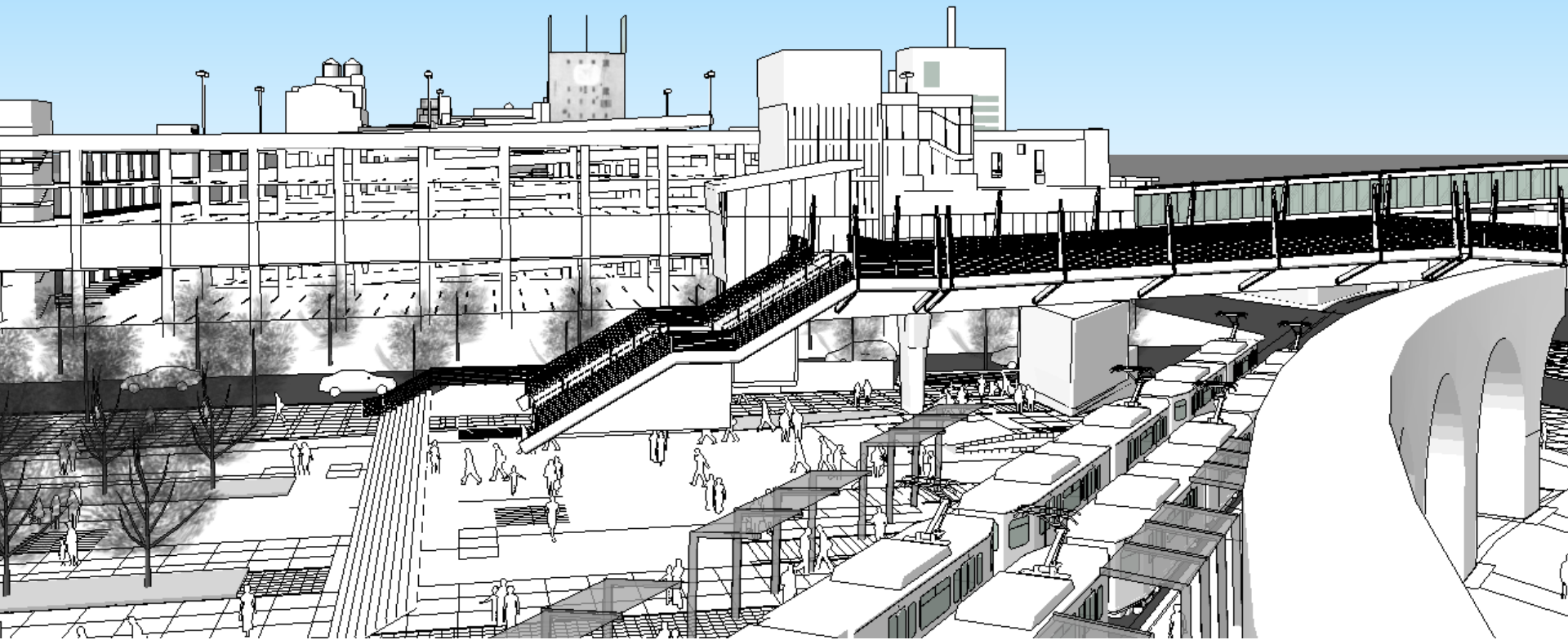
# View from Bridge Deck



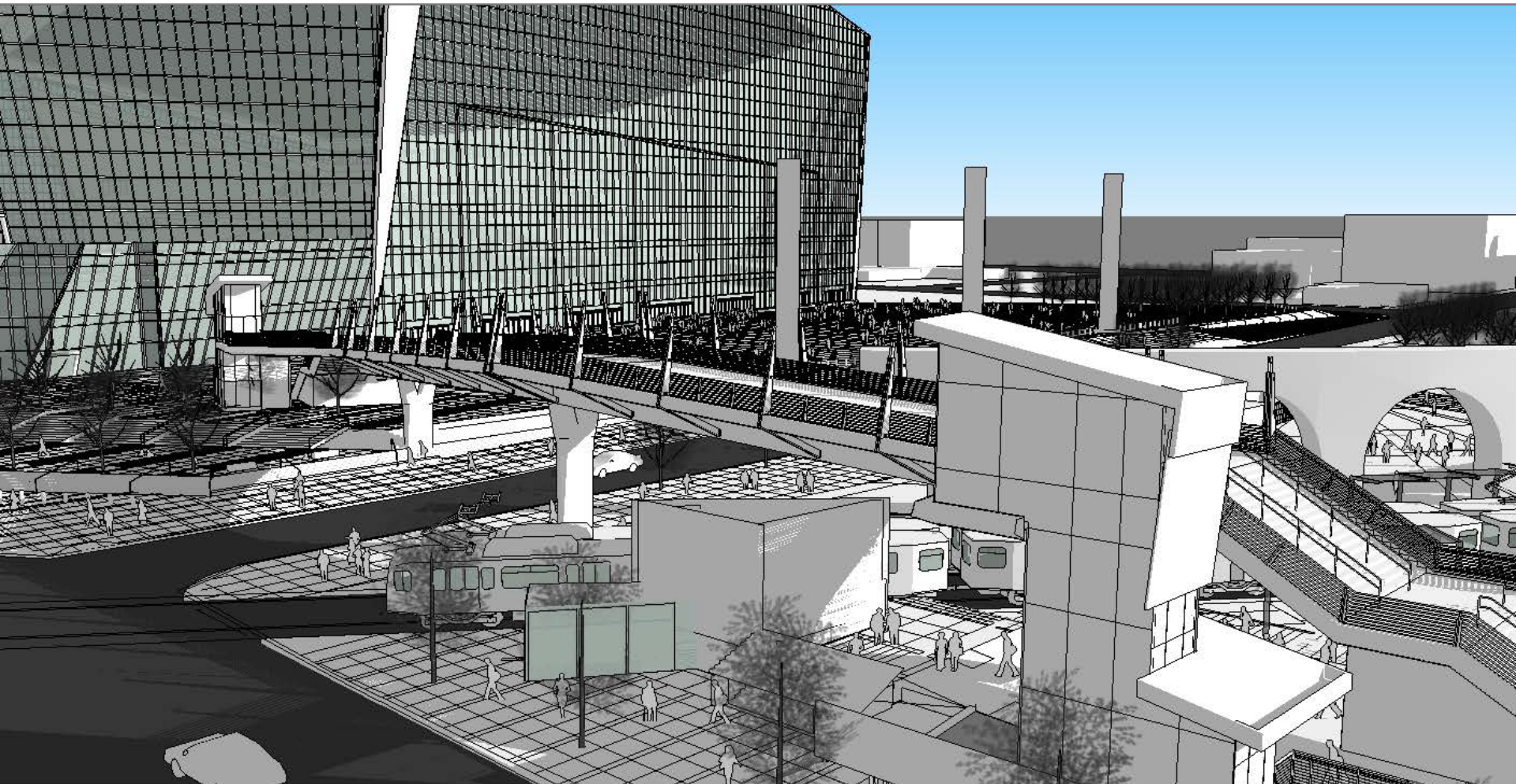
# View from 4<sup>th</sup> Ave toward stadium



# View of West Bridge Span



# View of West Elevator Tower



# Questions?



**Carol Hejl**  
**Planning, Engineering & Facilities**  
Metro Transit