

Small Shelter Design Metro Transit's Bus Stop Improvements Program

Transportation Accessibility
Advisory Committee

May 6, 2015



Scope of Bus Stop Improvements

- Goal is 150 Shelters at NEW Locations
- Issue - Some locations for new shelters won't accommodate standard shelters



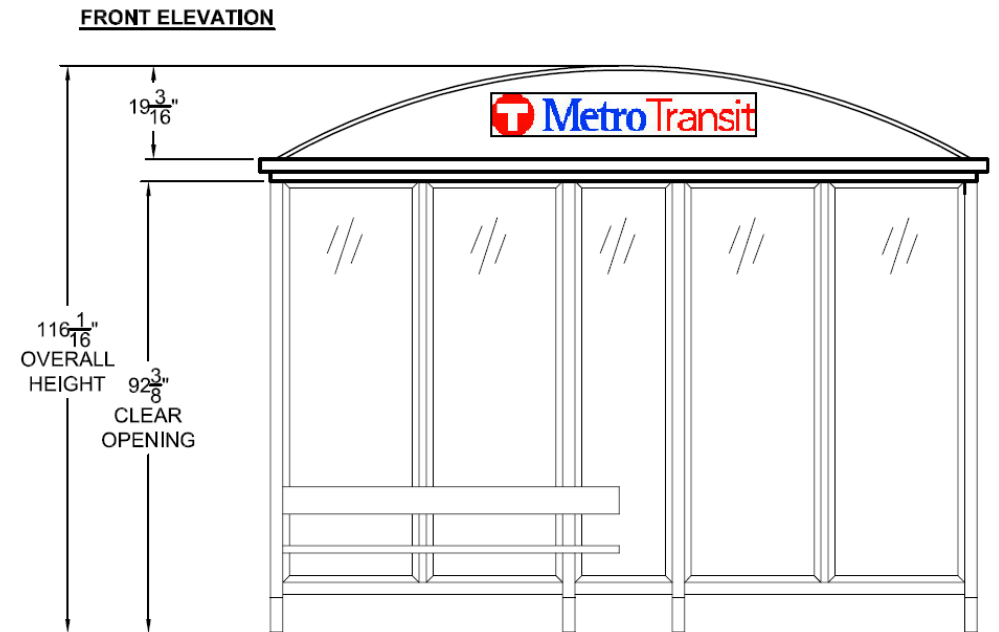
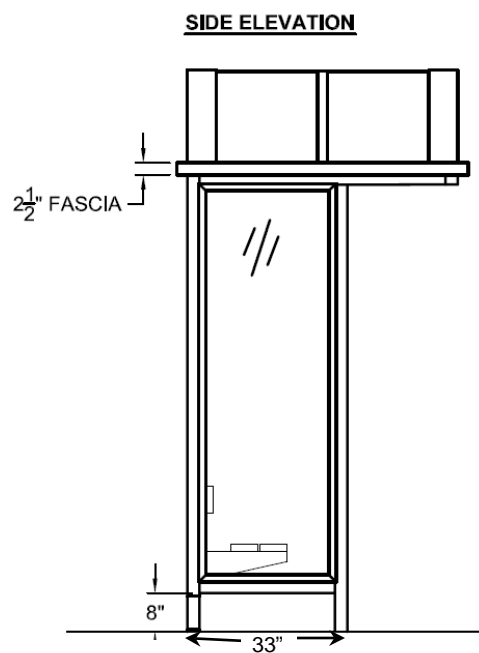
Standard Shelter Sizes

- C Style - 12' long x 6' deep x 10' high
- D Style - 8' long x 4' deep (6' with roof) x 9' high
- E Style - 12' long x 4' deep (6' with roof) x 10' high



Proposed Slim Shelter

- Approximate Dimensions
 - 12' or 8' long x 3' deep side walls (5' deep roof) x 10' tall
 - Reduces depth by 1'



Slim Design Benefits

- Can be placed in constrained spaces that cannot contain standard shelter sizes
- Provides more room for pedestrian movement
- Shorter roof reduces conflicts with bus mirrors
- Able to be equipped with light and heat
- Recognizable as bus shelter
- Faster and less expensive to produce than custom design

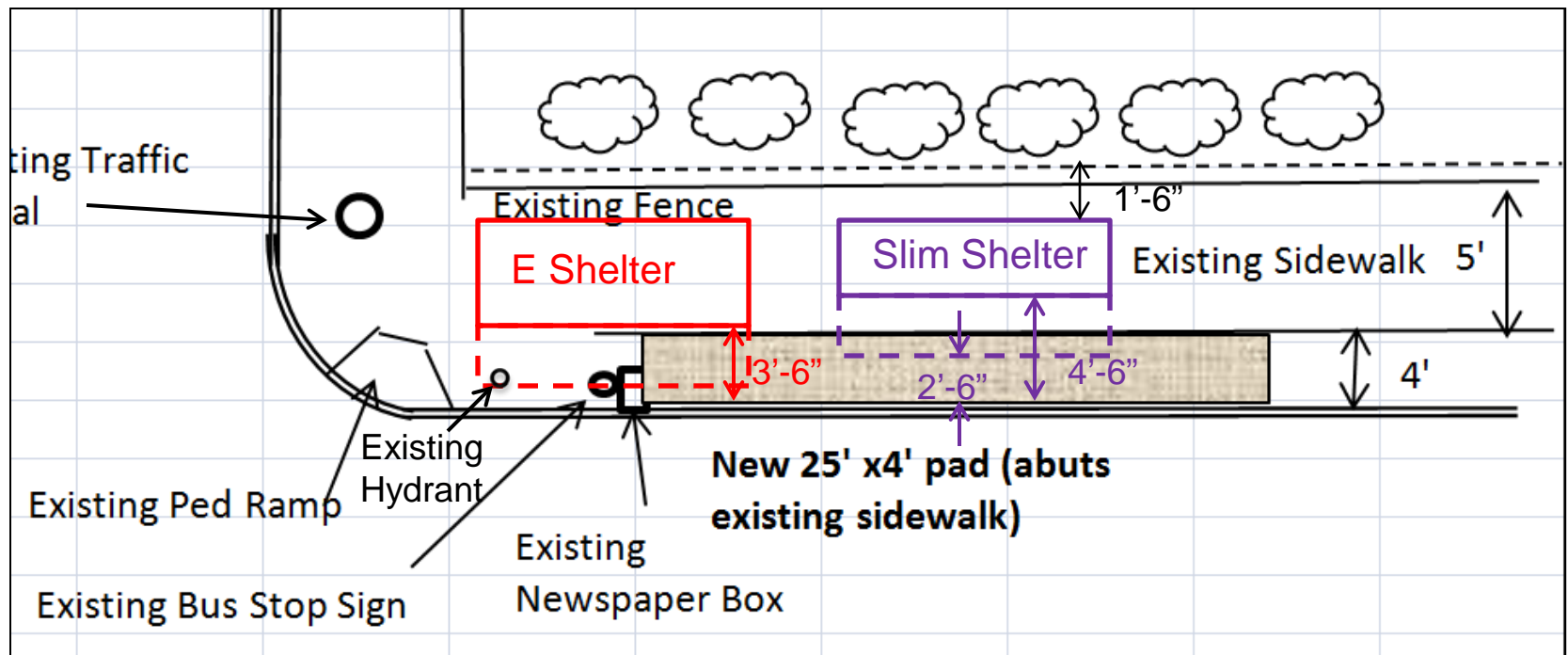
Site Example – Fillmore Ave. & Robert Street

- 5' wide sidewalk, 4' boulevard
- Fence to North, drops off 15' to parking lot



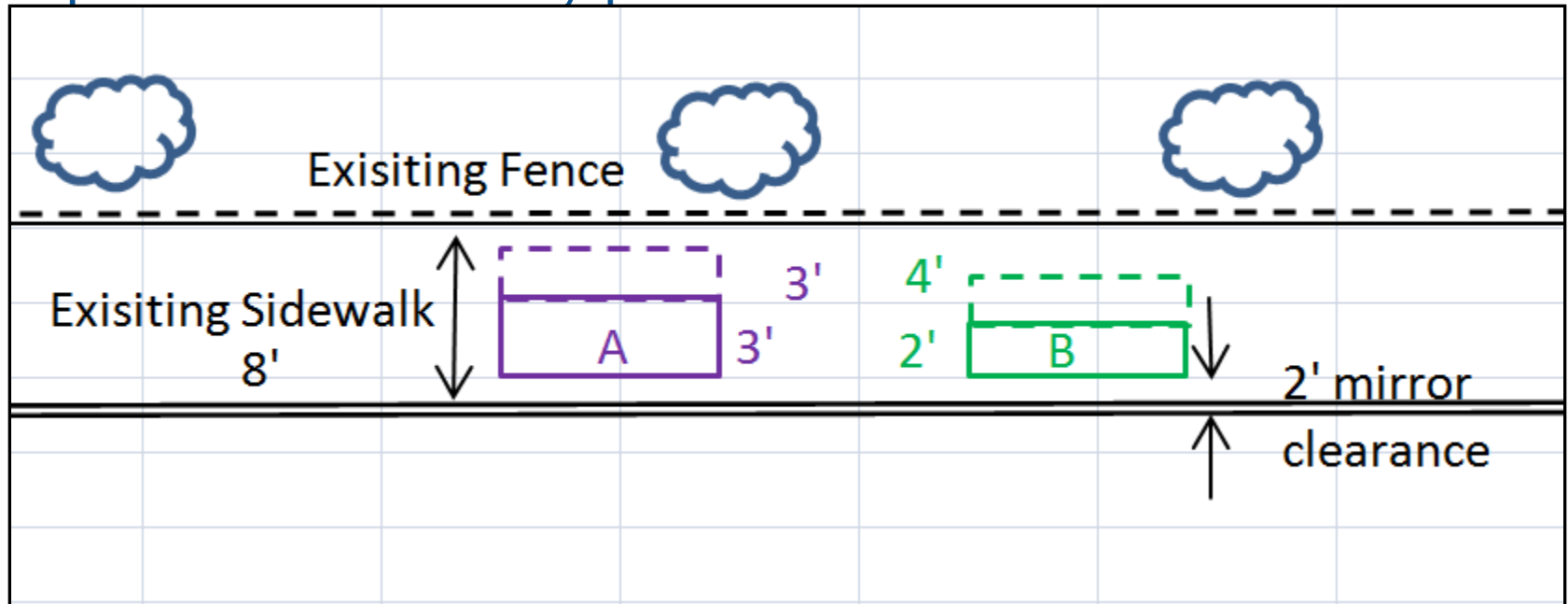
Site Example – Fillmore Ave. & Robert St.

- E Shelter vs. Slim Shelter



Slim Shelter Options – 3' vs. 2' Depth

- In constrained spaces like this is more shelter or more pedestrian walkway preferred?



A – 3' depth, 5' roof, 3' pedestrian clear zone

B – 2' depth, 4' roof, 4' pedestrian clear zone

Thank You

www.metrotransit.org/ladders-of-opportunity

Paul Lamb
Senior Project Coordinator
Engineering and Facilities

