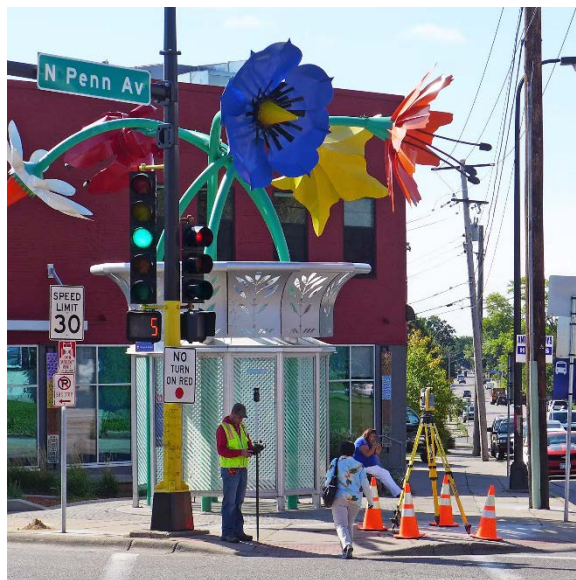


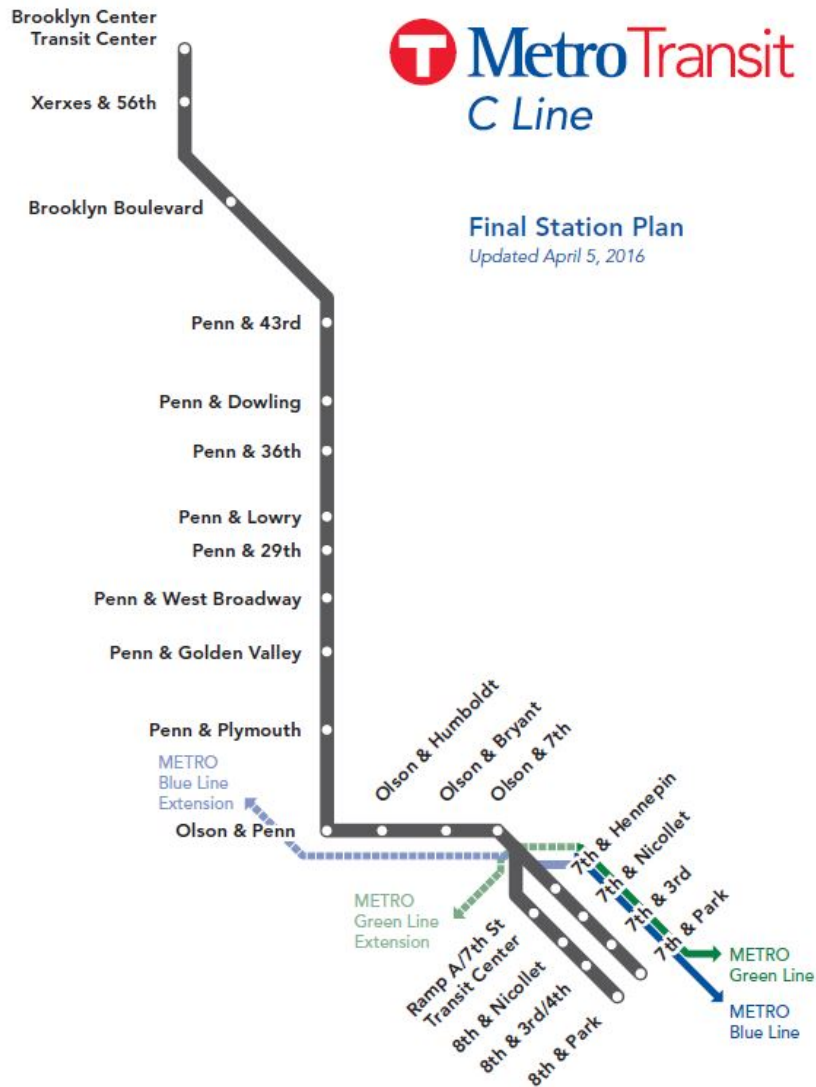
# C Line Rapid Bus



C Terrence Anderson, Community Outreach Coordinator  
Shawn Walding, Senior Engineer  
Metro Transit

TAAC  
October 5, 2016

# C Line project overview



- Substantially replaces Route 19
  - 8.5 miles from downtown (HCMC) to Brooklyn Center
  - 23 enhanced stations
- Serves 7,600 people today, 9,300 by 2030
- Runs in mixed traffic
- Faster trip
  - Pre-boarding fare payment
  - All-door boarding on 60-foot vehicles
  - In-lane stop (curb extensions)
  - Transit signal priority

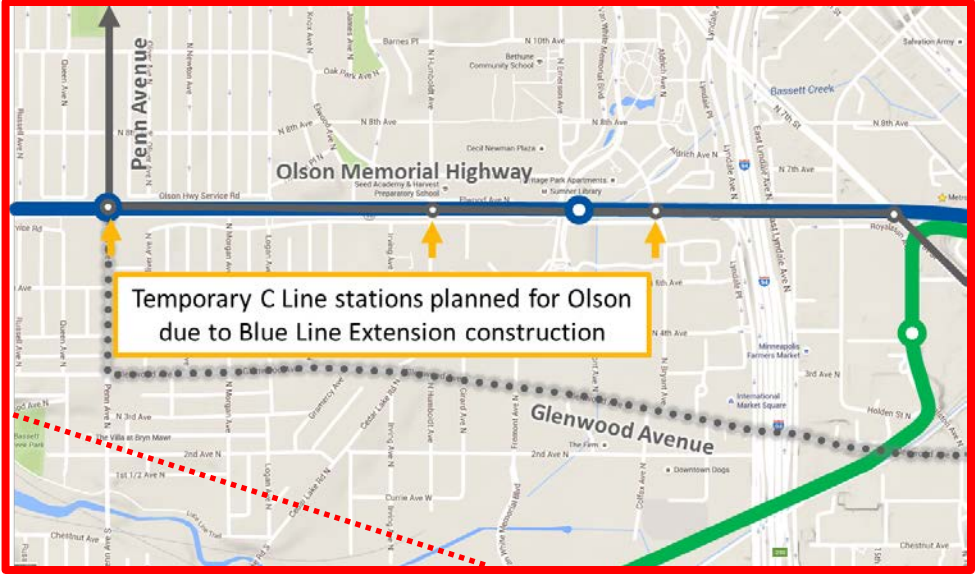
# Temporary Stations on Olson Memorial Highway, Current Recommendation to move to Glenwood in long-term



Final Station Plan  
Updated April 5, 2016



- Light rail construction will impact stations
- Recommended long-term relocation to Glenwood (future project timed with light rail)







# What did we hear from TAAC on A Line?

## Stations

- Ensure ADA compliance
- Use consistent designs for station layout
- Provide benches in shelters
- Provide a designated waiting area for people in wheelchairs

## Vehicles

- Consider alternative securement system on buses, passive restraint systems
- Greater door width on buses

## Overall

- Explore iBeacon technology



# Station Components



Stations include real time bus information, shelters with heat and light, bike racks, benches, and off-board fare collection.



# Service Components



Budgeting for snow  
and trash removal



MTPD  
conducts  
fare checks



60-foot, 3-door articulated buses  
(Specification development begins late 2016)

# Implementation schedule

	2016	2017	2018	2019	2020	2021	2022
<b>C Line</b>							
Environmental review	█						
30% design		█					
Final design		█					
Construction			█				
Revenue service begins				◆			
C Line moves to Glenwood (pending Blue Line Extension timeline)						◆	

**October-November 2016:** Initial design considerations (intersection layouts, shelter & pylon placement)

**January-February 2017:** Final station layout (placement of all station features, design treatments)

**September 2017:** Share final station designs

**September 2017-March 2018:** Share construction plans

**2018:** Construction

**2019:** C Line opens with service on Penn Avenue, Olson Highway



# Upcoming engagement process

- October: Share Glenwood long-term realignment recommendation and gather feedback on preliminary design
  - Open house: October 18, 6:00–7:30 p.m.  
Harrison Education Center
  - Neighborhood organization presentations
  - Pop-up bus stop outreach, on-board customer outreach
  - Agency stakeholder feedback

# Coordinating C Line on Penn Avenue with Hennepin County, and City of Minneapolis

- C Line BRT (Metro Transit)
  - Stations and related construction
  - Transit signal priority
- Penn Avenue (Hennepin County)
  - Intersection reconstruction partnership
  - Reconstruction from Lowry to Broadway
  - Mill & overlay + ADA improvements, Plymouth–Broadway & Lowry–Dowling
- Penn Avenue (Minneapolis)
  - Lighting

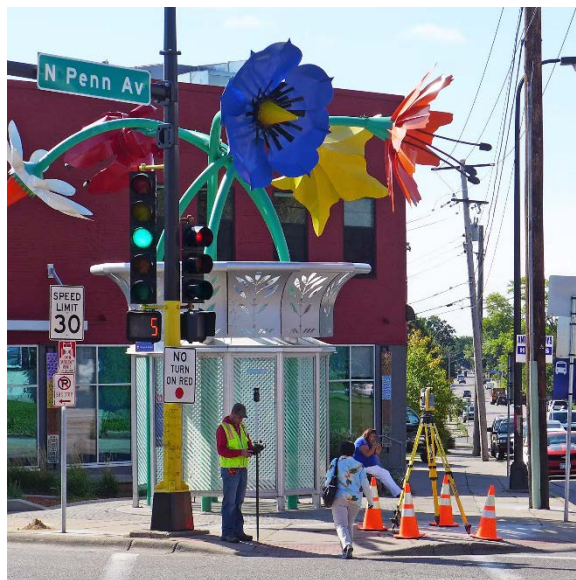


# Discussion

- Feedback on A Line to inform C Line development
- What are some C Line specific considerations that we should be aware of?
- Thoughts regarding long-term Glenwood realignment recommendation.
- Street reconstruction considerations.



# [metrotransit.org/c-line-project](https://metrotransit.org/c-line-project)



C Terrence Anderson, Community Outreach Coordinator

612-349-7390 | [cterrence.anderson@metrotransit.org](mailto:cterrence.anderson@metrotransit.org)

Shawn Walding, Senior Engineer

612-341-5668 | [shawn.walding@metrotransit.org](mailto:shawn.walding@metrotransit.org)

BRT/Small Starts Project Office