



METRO Orange Line Update

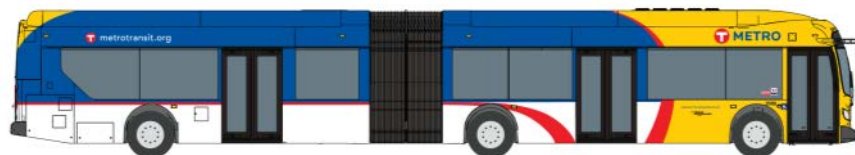
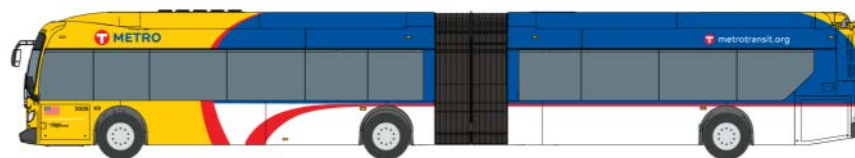
Transportation Accessibility Advisory Committee
November 2, 2016

Christina Morrison, Project Manager

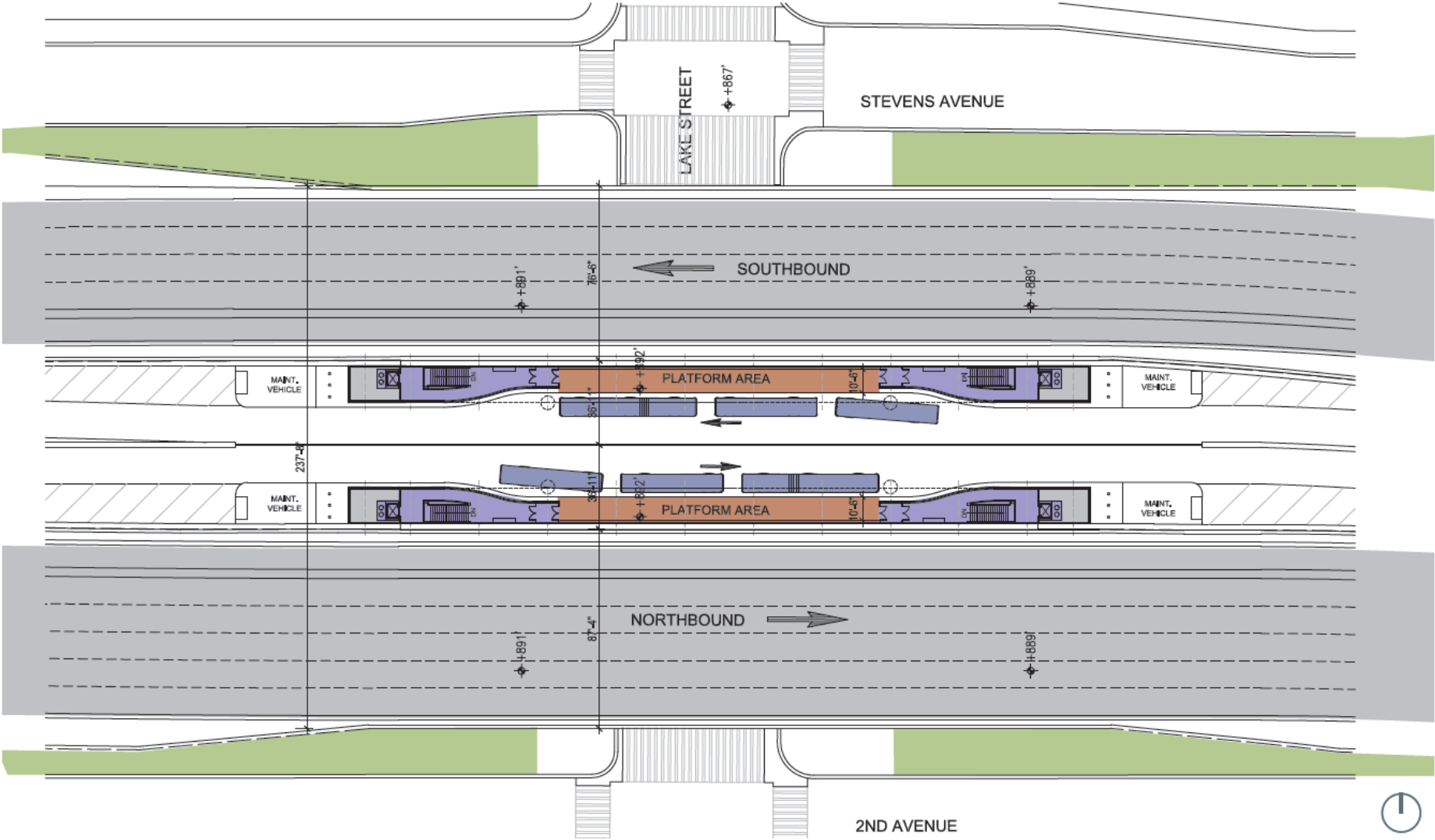
Rebecca Fabunmi, Principal Engineer

Orange Line Service

- 17 miles, 12 Stations
- 10-minute service during peak
- 15-minute service midday and night
- Service 20 hours a day, 7 days a week
- 12 low-floor, 3-door METRO buses
- Design:
 - Completed 30% design
 - Reinitiated Lake Street design
- Construction starts in 2017
- Open for service in 2019

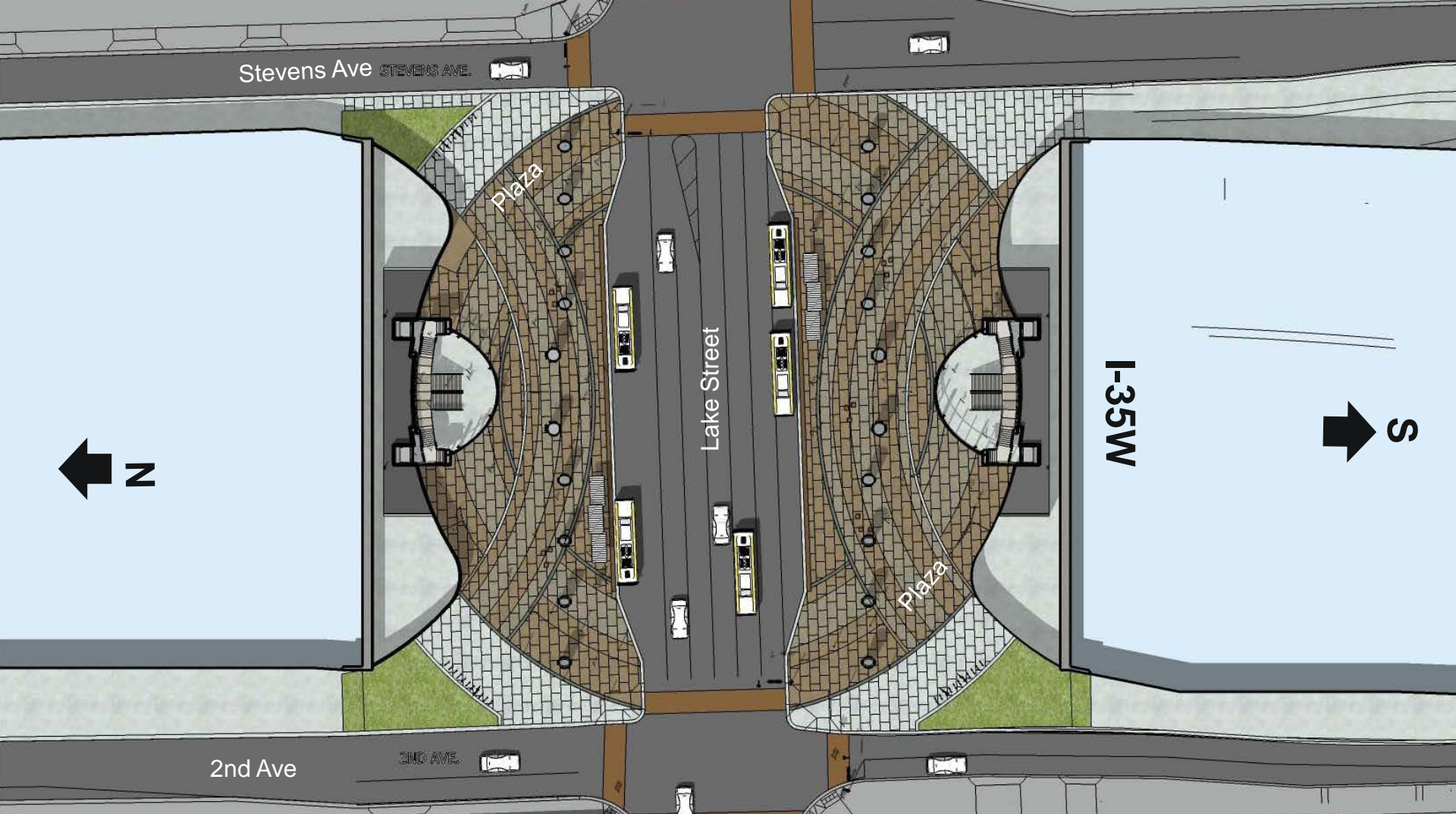


Lake Street Station Design



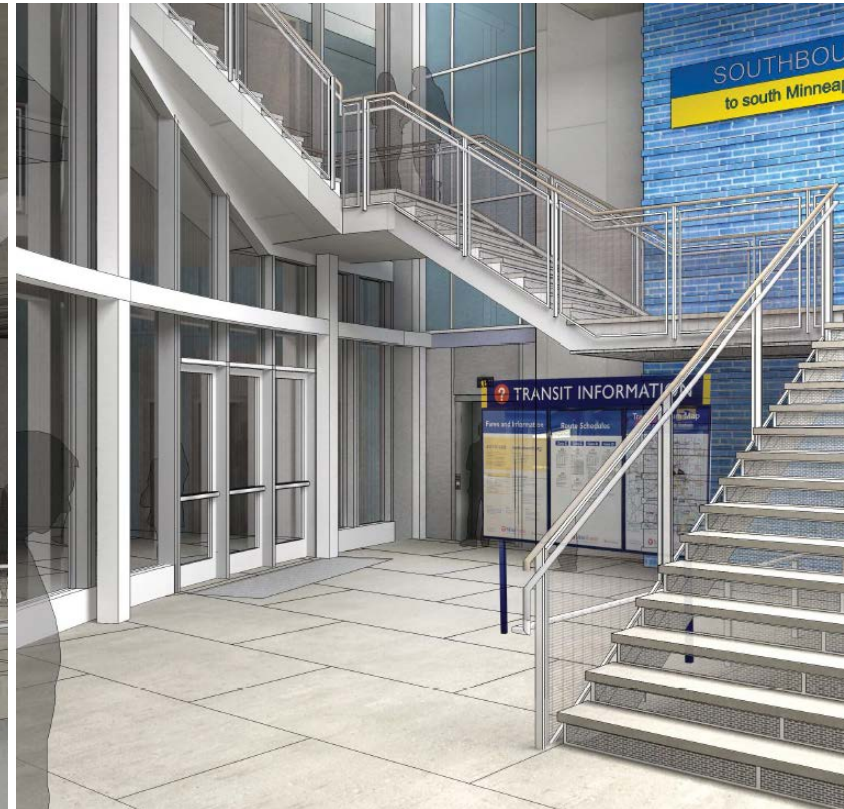
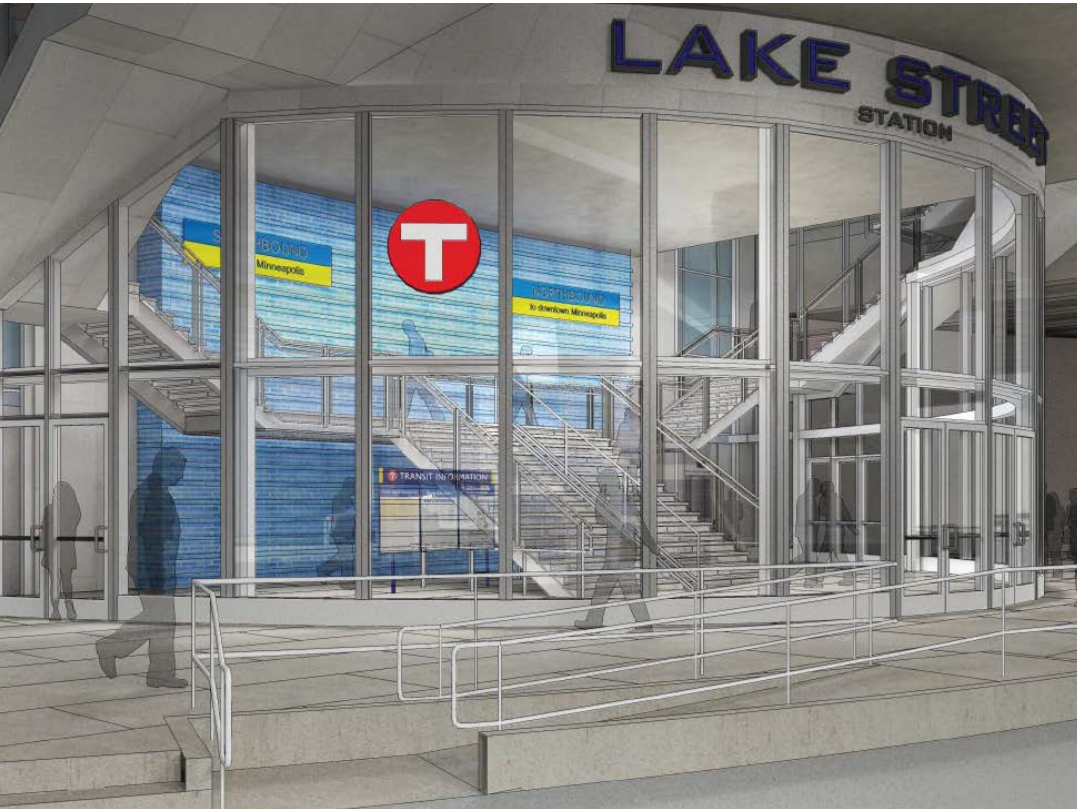


Lake Street Station Design

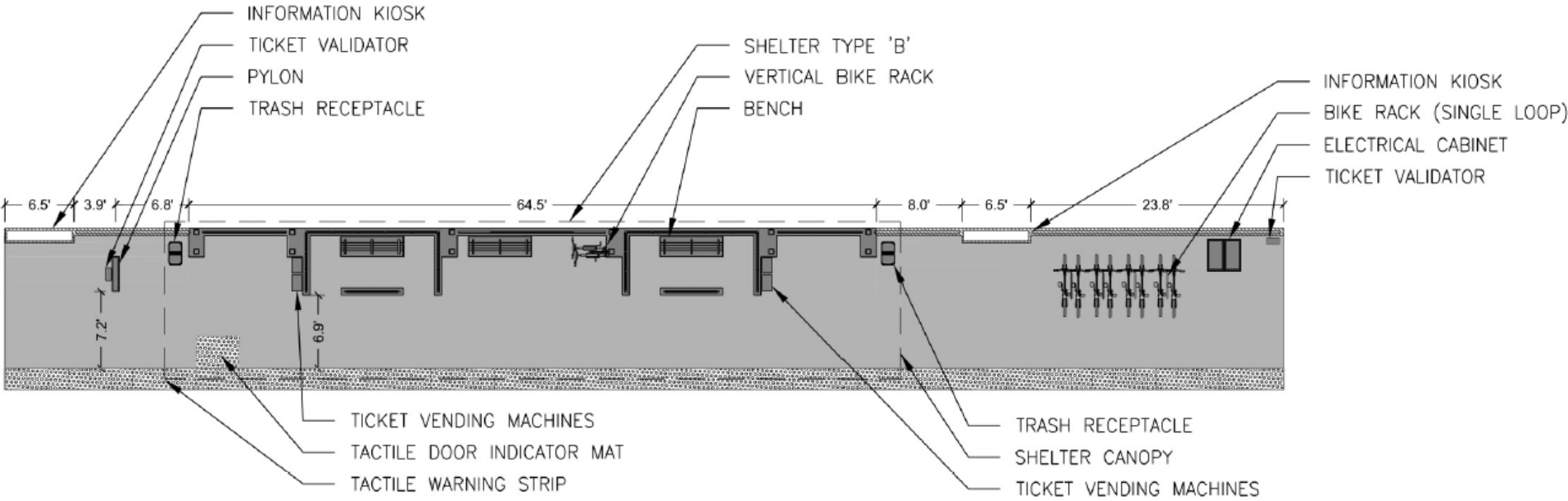




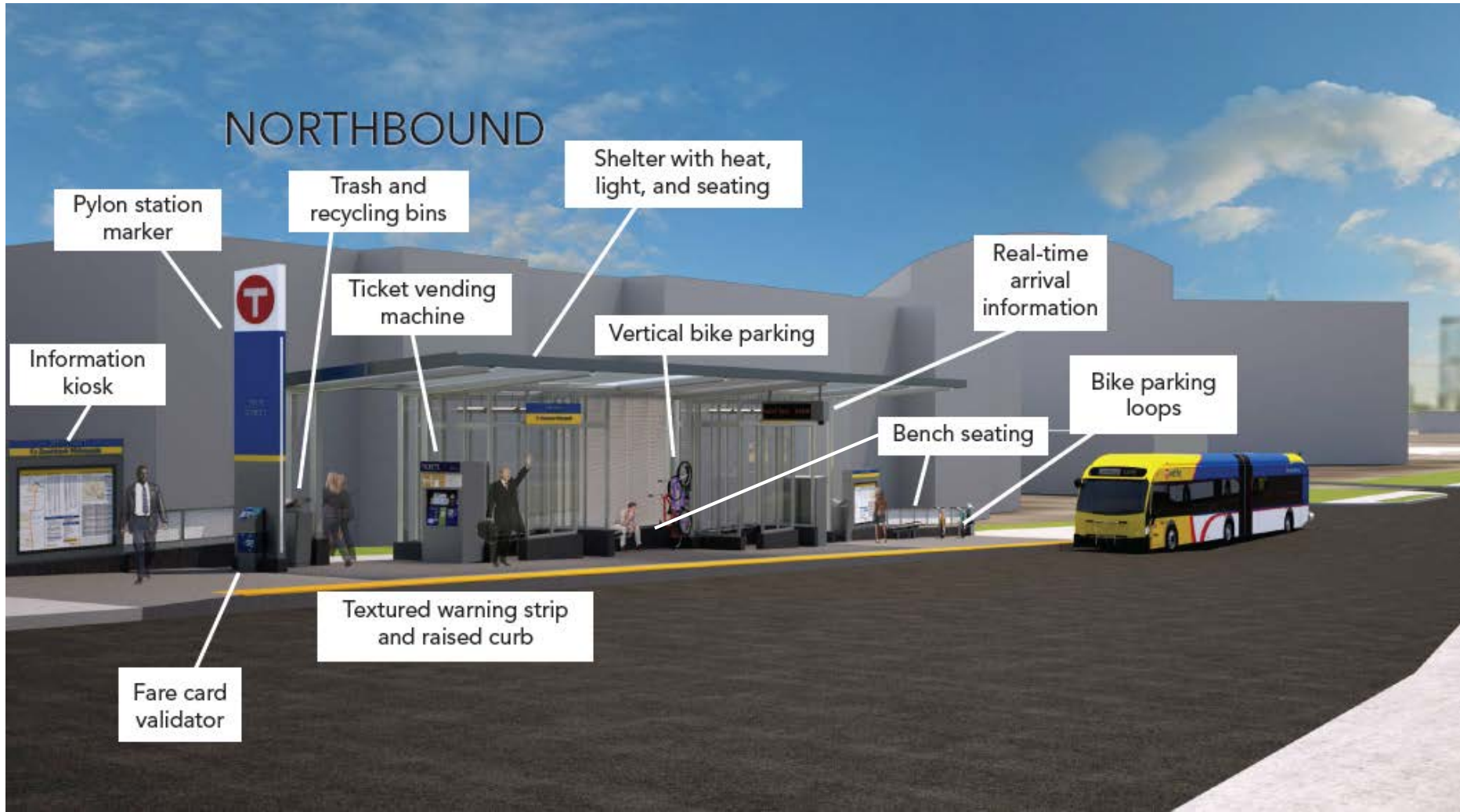
Lake Street Station Design



Typical Station Platform



Rendering of Typical Station



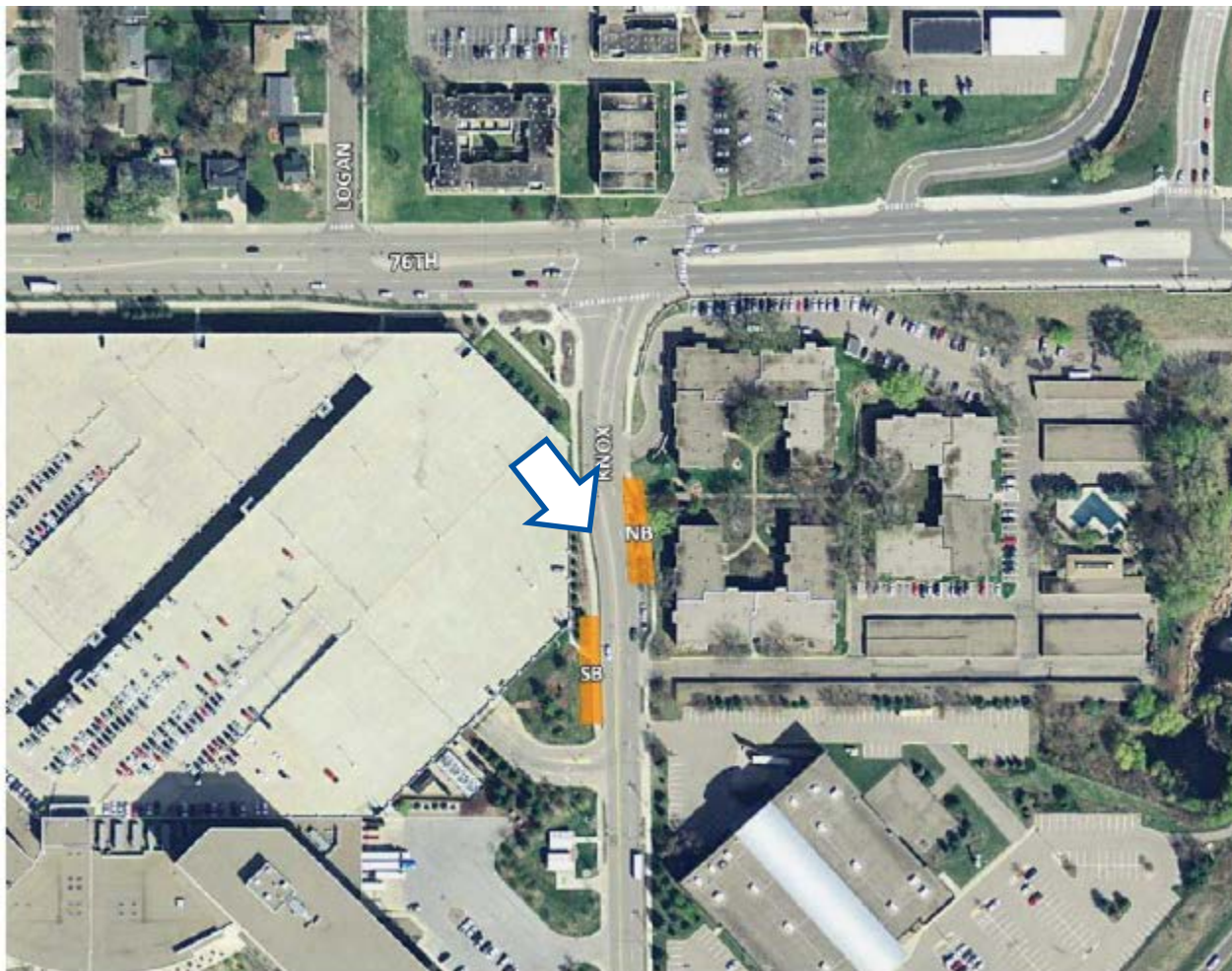
66th Street Station - Northbound



66th Street Station - Northbound



76th Street Station





76th Street Station

Fountainhead
Apartments

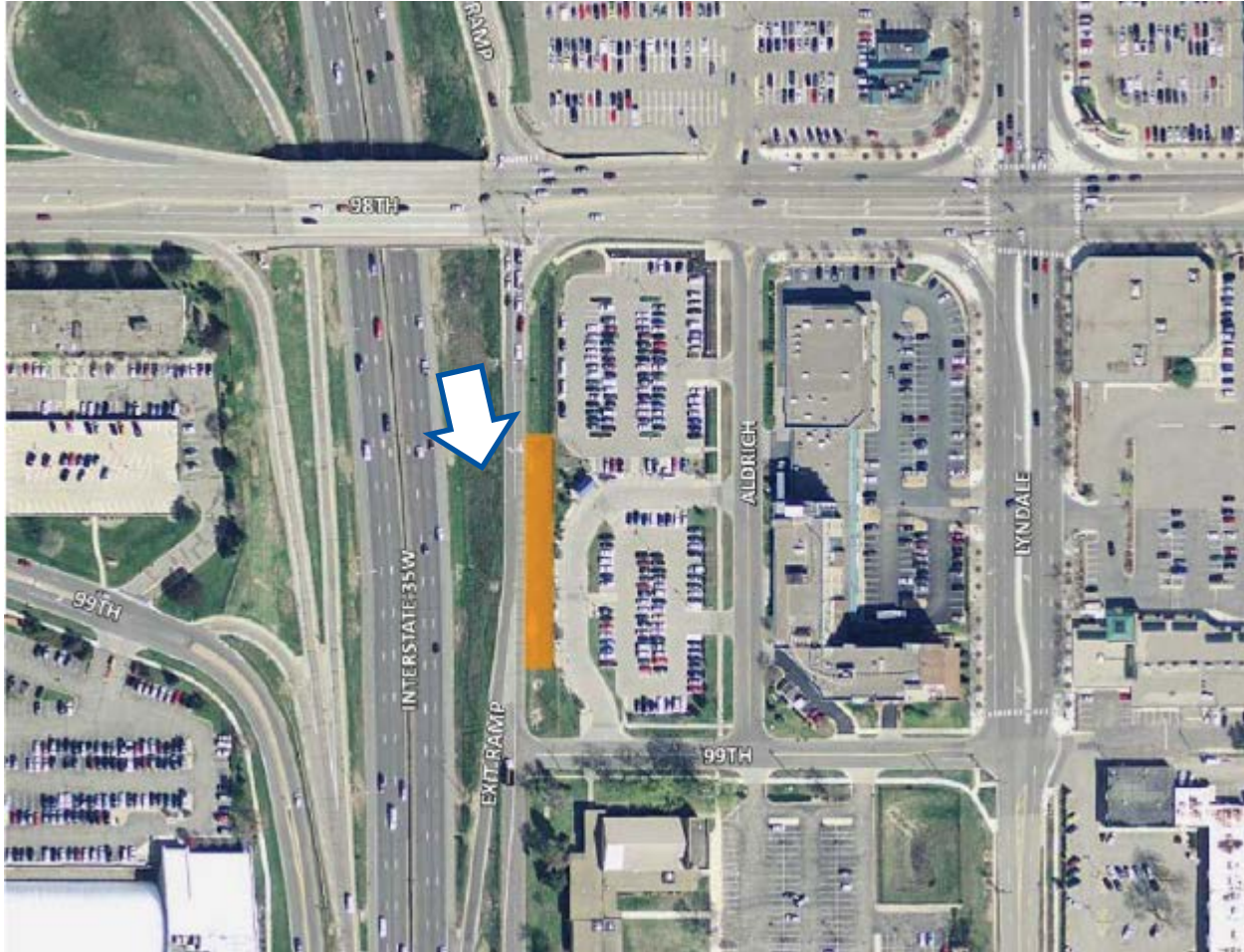
Dick's



Knox Avenue Underpass



98th Street Station



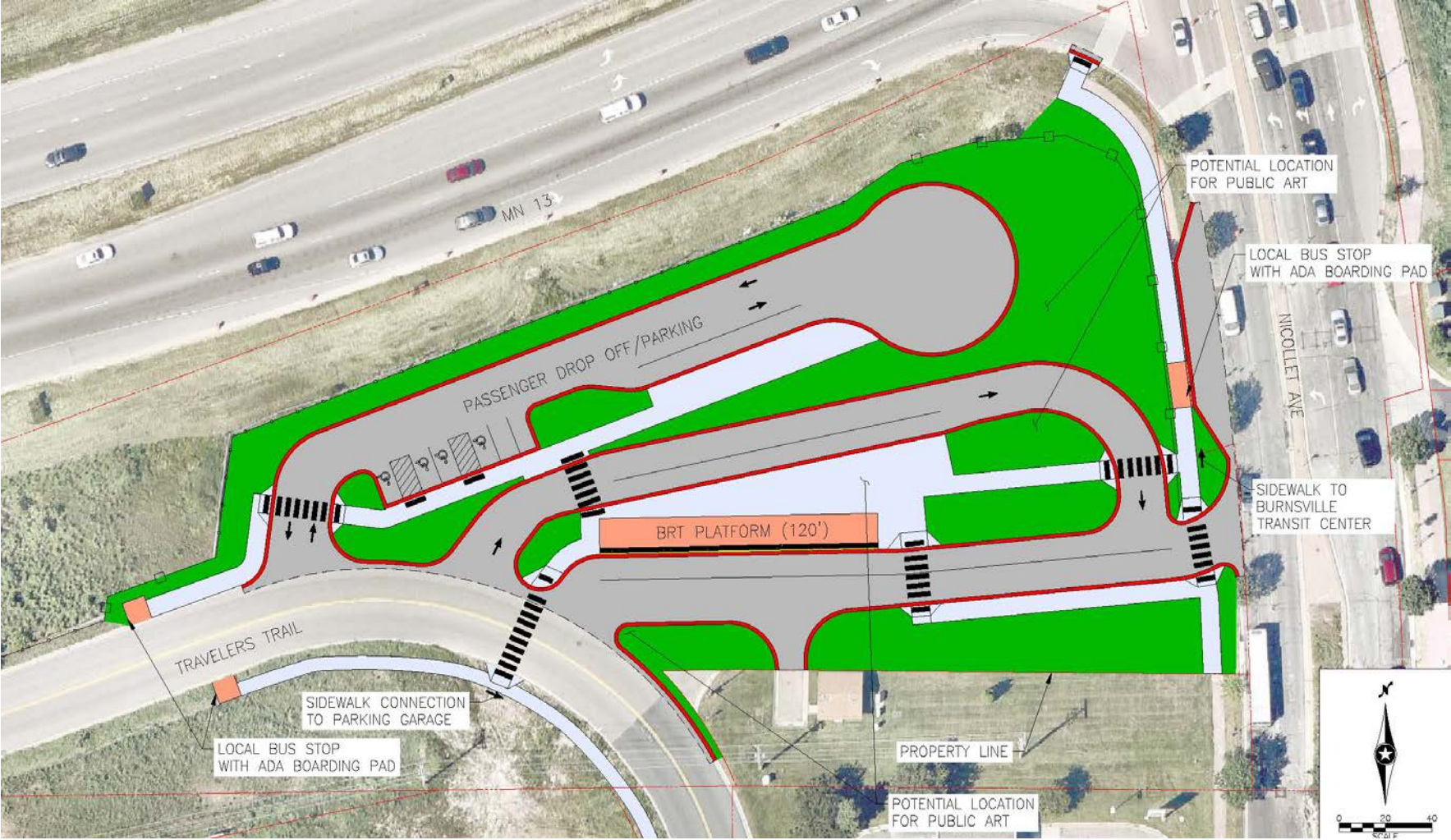


Night view of Stations

98th Street, Bloomington



Nicollet Avenue Station



Nicollet Avenue Station





Fare Free Downtown Stations

Stop Groups C & E





T METRO
Orange Line



Get more information or sign-up for our e-newsletter at
www.metrotransit.org/orangeline

Christina Morrison
christina.morrison@metrotransit.org
612-349-7690

Rebecca Fabunmi
rebecca.fabunmi@metrotransit.org
612-349-7716