



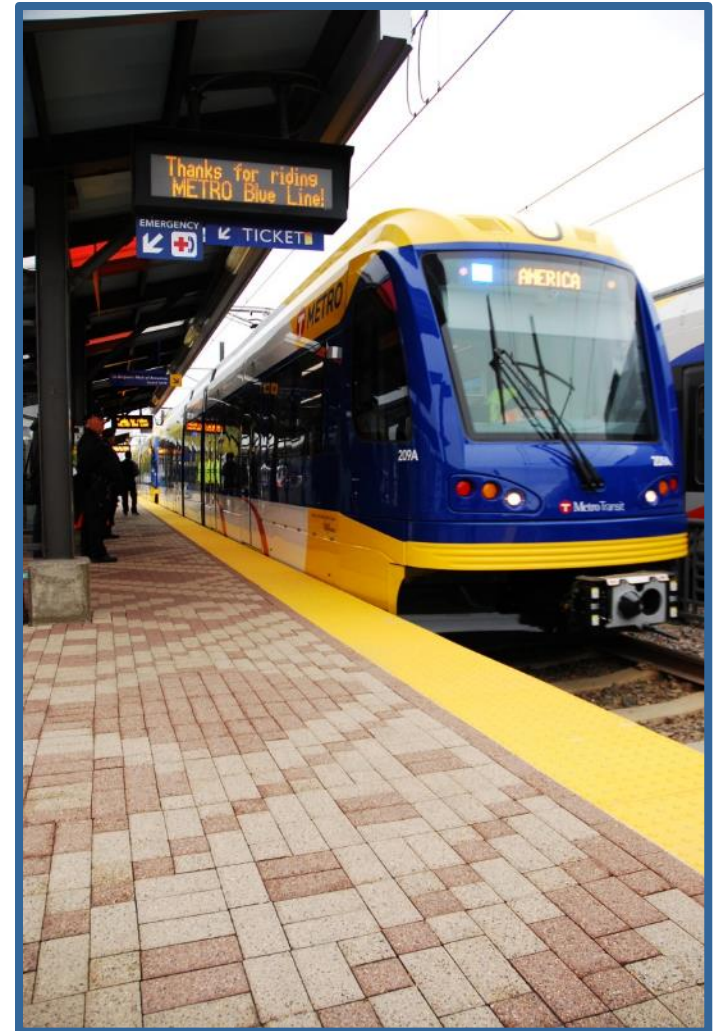
Transportation Accessibility Advisory Committee (TAAC)

March 1, 2017



Today's Topics

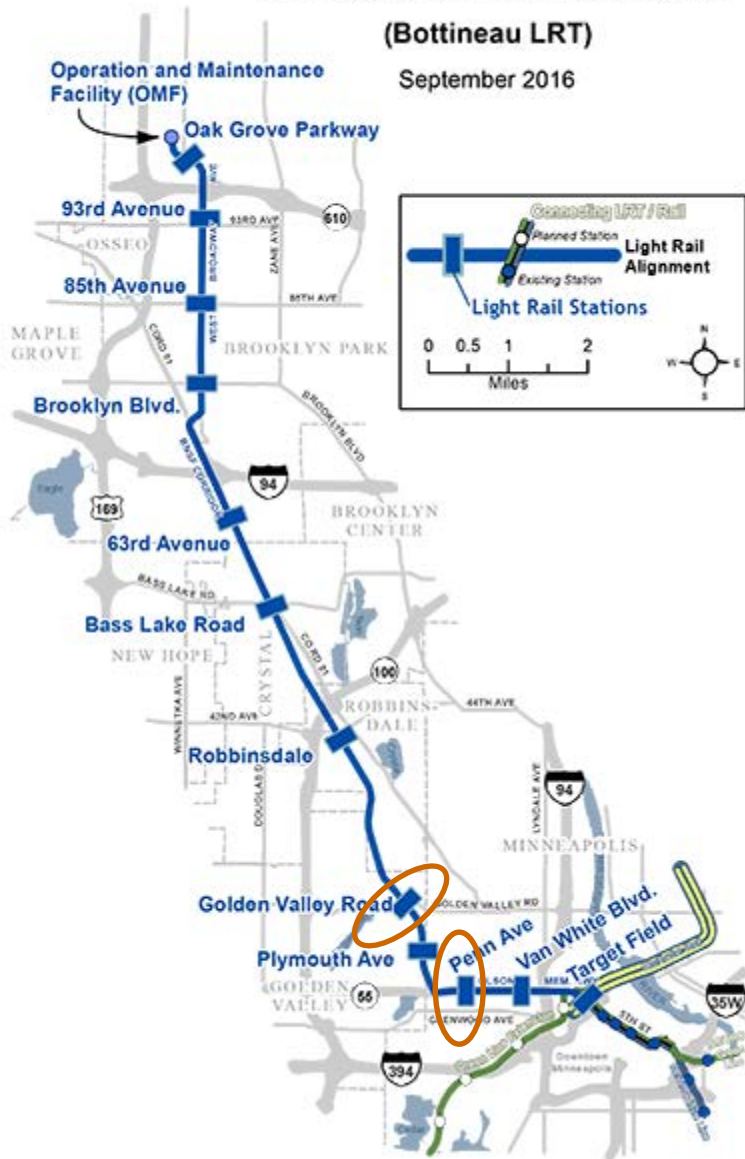
- Project Overview
- Workshop Overview
 - Penn Ave Station: Signalized Crossing/ 'Z' Crossing/ Cycle Track
 - Golden Valley Road Station: Navigation and Access



METRO Blue Line Extension

(Bottineau LRT)

September 2016



Workshop Stations

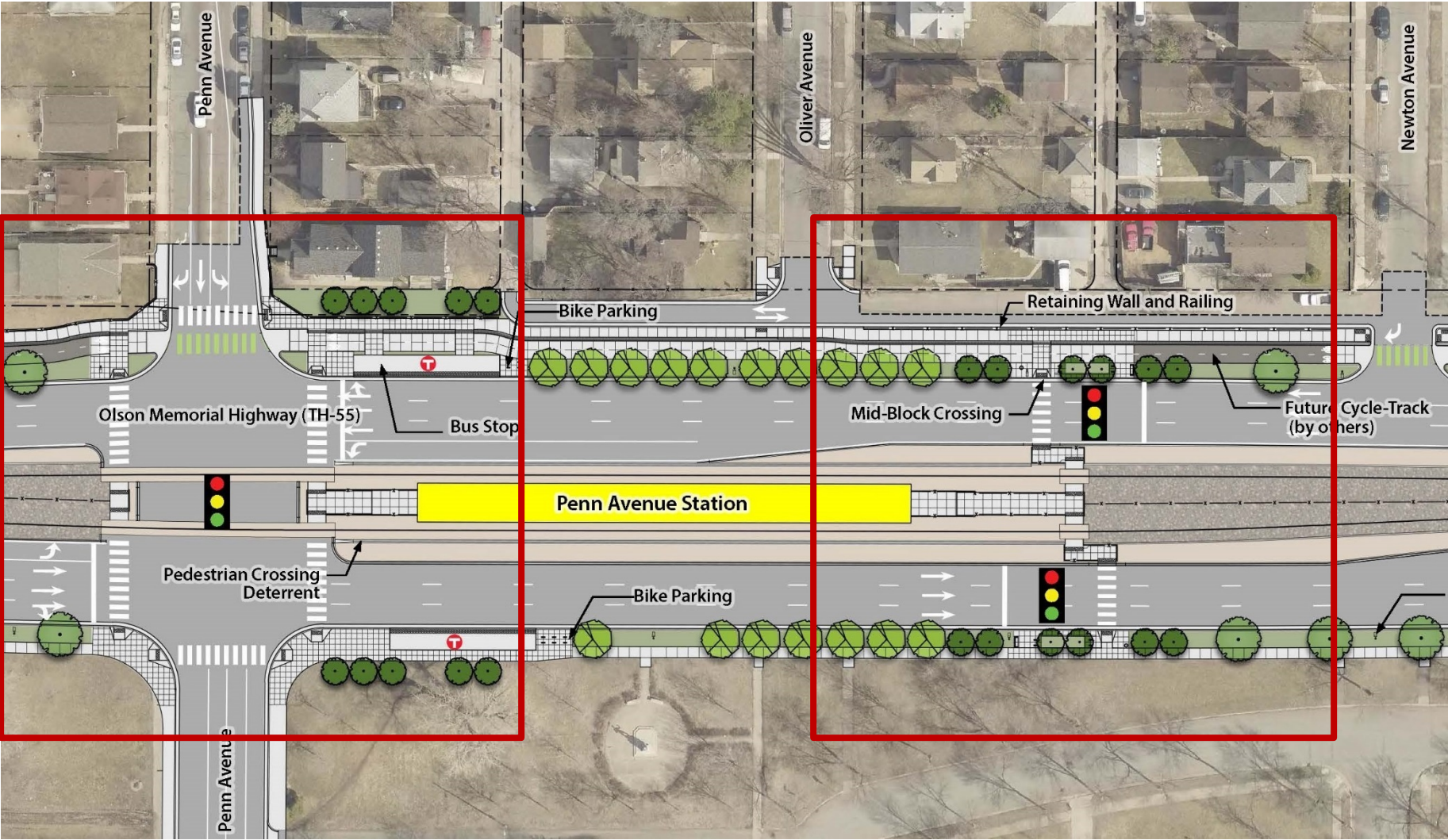
- Penn Avenue Station in Minneapolis
- Golden Valley Road Station in Golden Valley



Station Access Overview



Center-Running Station Access



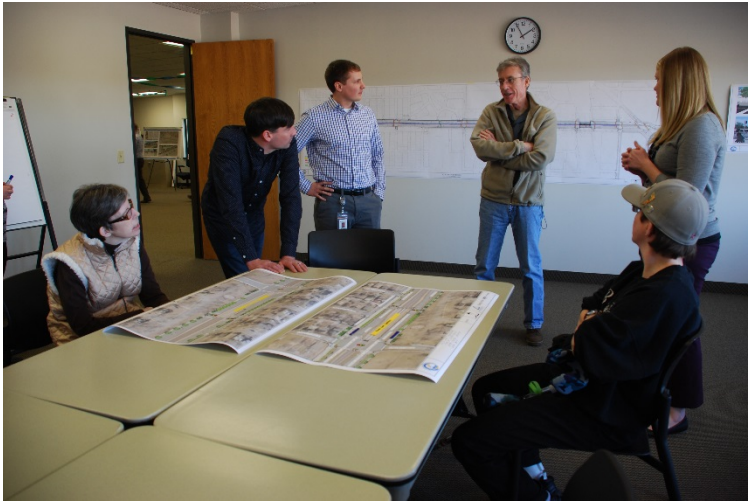
Primary Access

Secondary Access





Workshop



Penn Ave Station Signalized Crossing/ 'Z' Crossing/Cycle Track TAAC Feedback:

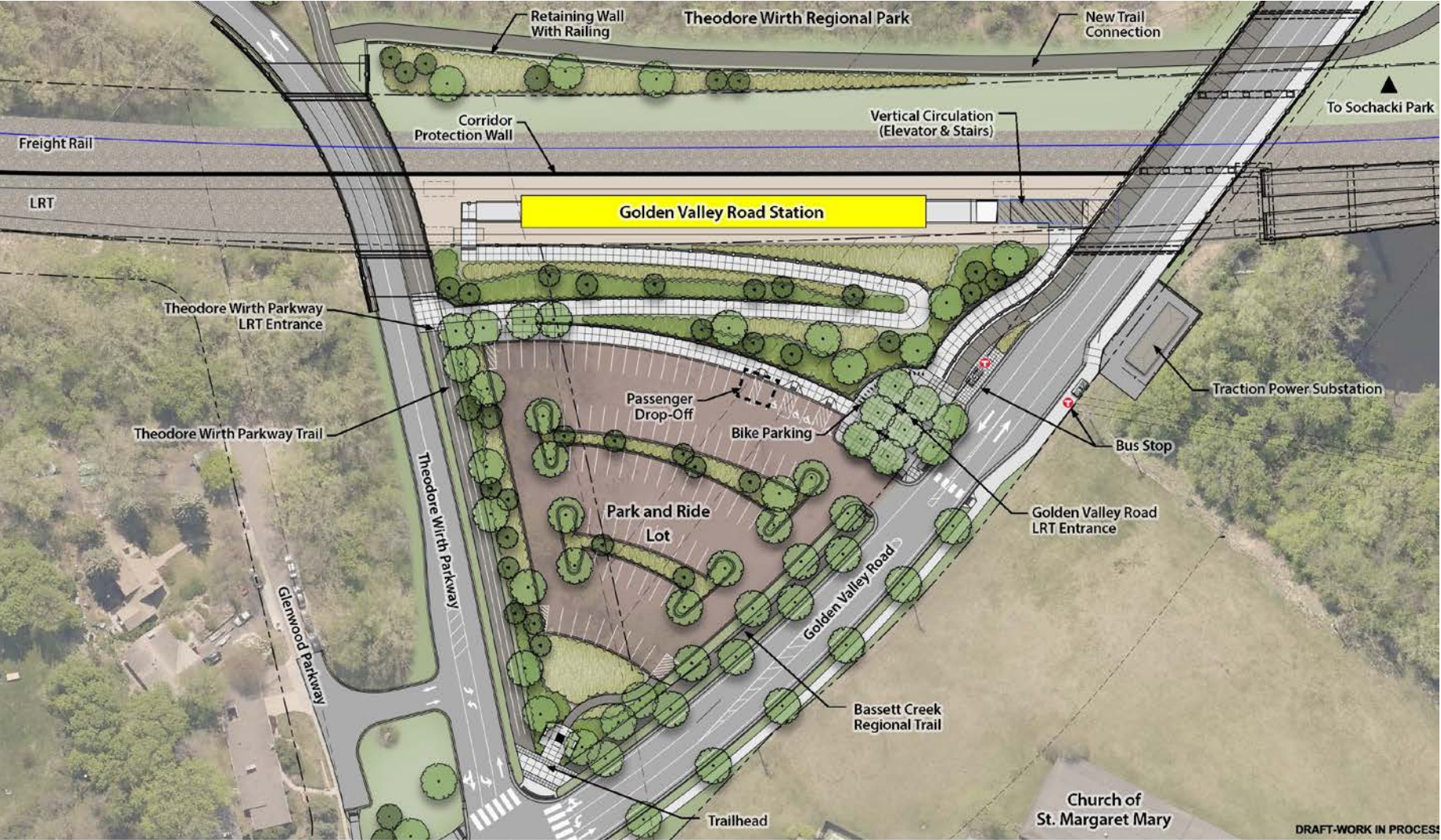
- Railing/detectable edge locations seem appropriate
- Consider snowclearing/landscaping in overall station site design
- Identified potential conflicts with cycle-track users and people using sidewalks
- Concern with LRV train controlled devices
- Concern with Rectangular Rapid Flash Beacon
- Facility colors and texture



Station and Platform Overview



Golden Valley Road Station



Workshop





Golden Valley Road Station Navigation & Access TAAC Feedback:

- Wayfinding signage for all users
- Close gap to Courage Kenney
- At secondary access path, add bench at landing mid-way to station
- Develop pavements with wheelchair use in mind
- Interest in design of small plaza at elevator/stair entrance
- Landscaping design/snow removal, elevator reliability
- Truncated domes at parking lot: necessary?

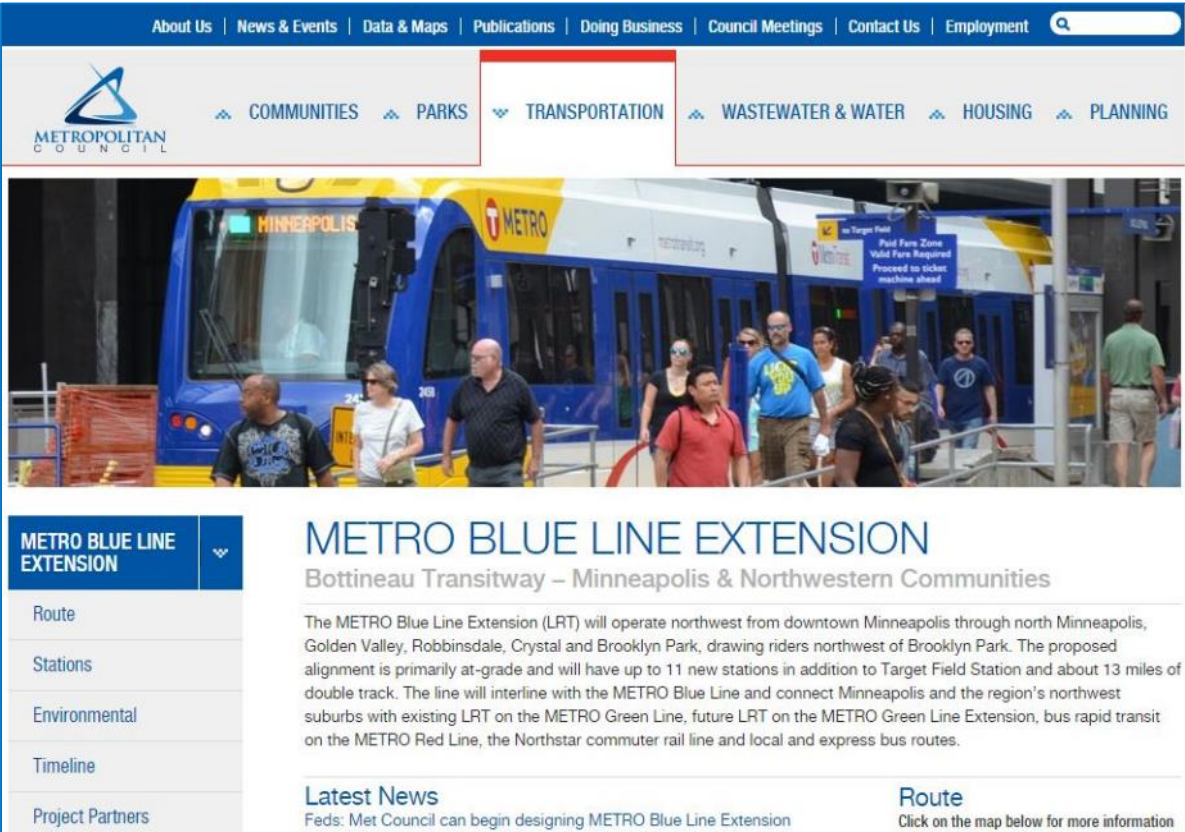


Next Steps

- Schedule field visit with Ken Rodgers & BPO staff
- Continue coordination with Metro Transit for consistency in the system
- Provide regular updates and receive feedback from TAAC
- March 8: Host upcoming TAAC LRV workshop



More Information



The screenshot shows the Metropolitan Council website with the 'TRANSPORTATION' menu item highlighted. Below the navigation is a large image of a blue and yellow METRO bus at a station. The main content area features a sidebar with a dropdown menu for 'METRO BLUE LINE EXTENSION' containing links for Route, Stations, Environmental, Timeline, and Project Partners. The main text area is titled 'METRO BLUE LINE EXTENSION' and 'Bottineau Transitway – Minneapolis & Northwestern Communities'. It contains a paragraph describing the project and two sections: 'Latest News' with a link to 'Feds: Met Council can begin designing METRO Blue Line Extension' and 'Route' with a link to 'Click on the map below for more information'.

Website: BlueLineExt.org

Email: BlueLineExt@metrotransit.org

Twitter: [@BlueLineExt](https://twitter.com/BlueLineExt)

