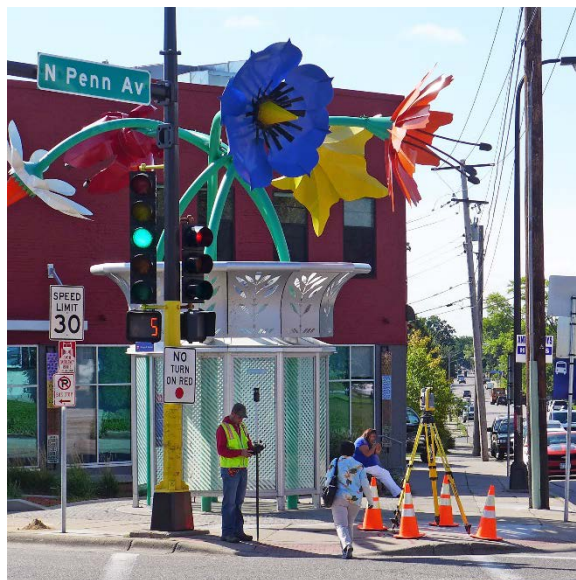


C Line Rapid Bus – 90% Design



Karyssa Jackson, Community Outreach Coordinator
Shawn Walding, Senior Engineer
Metro Transit

TAAC
August 2, 2017

Today's Discussion

- Informational
- Feedback from February
- Project development update
 - Schedule
 - Funding
- Design update
 - Platform renderings
 - Vertical separation
- Communications outreach update
- Preparing for Construction

What did we hear from TAAC in February?

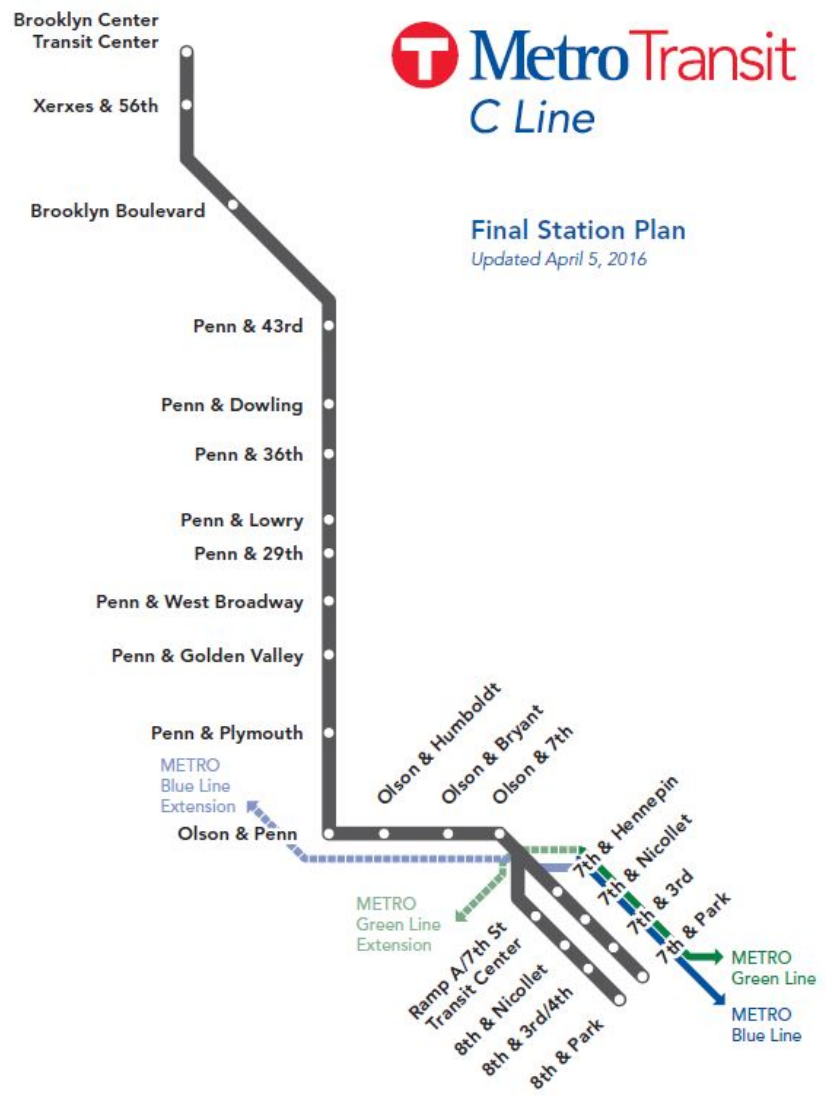
Stations

- Stay consistent
- Continue to explore navigational tools for station elements
- Developed BRT Design Guide
- ATCMTD Grant – Applied in June, potential award in September
 - Beacon Deployment & Integration

Roadwork

- Maintain accessible, clear, continuous PAR through construction:
- Defined through project specifications

C Line project overview



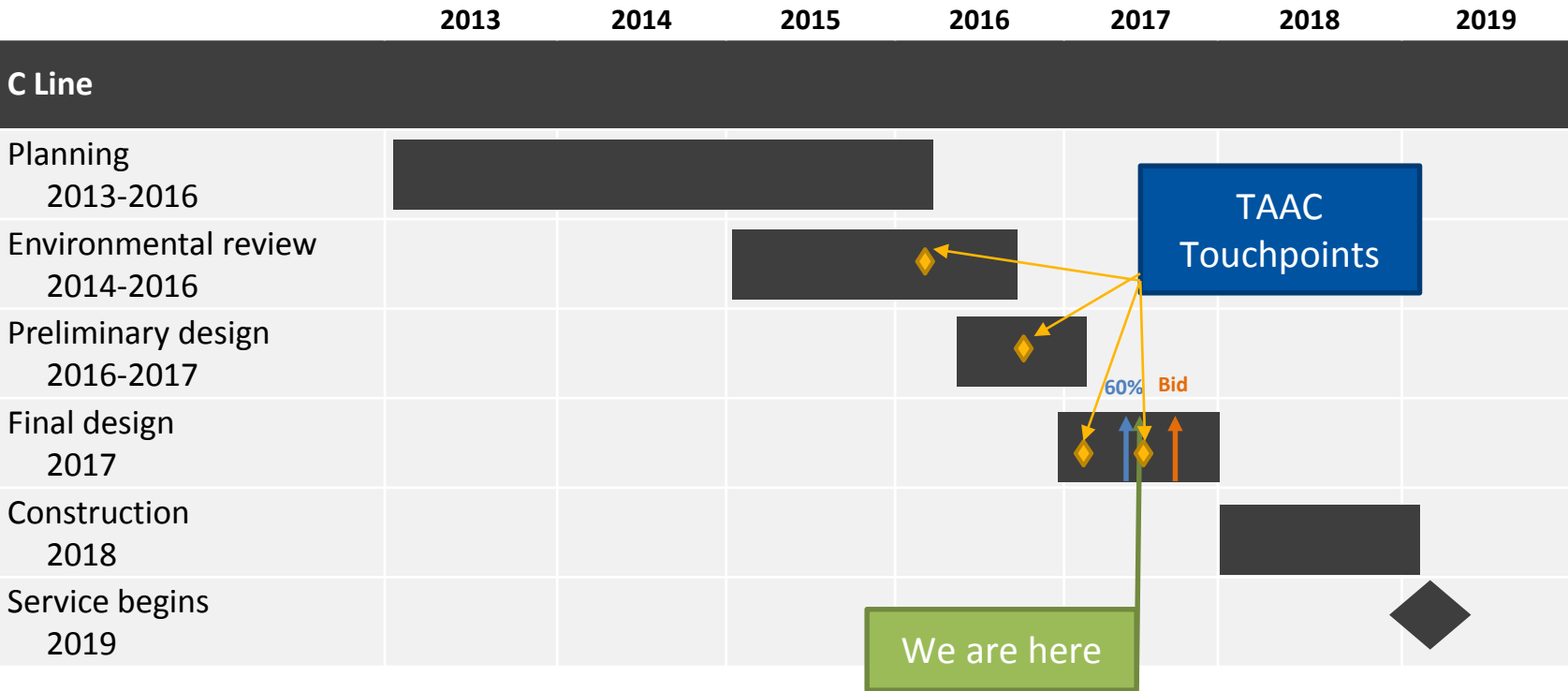
- Substantially replaces Route 19
 - 8.5 miles from downtown (HCMC) to Brooklyn Center
- Serves 7,600 people today, 9,300 by 2030
- Runs in mixed traffic
- Faster trip
 - Pre-boarding fare payment
 - All-door boarding on 60-foot vehicles
 - In-lane stop (curb extensions)
 - Transit signal priority

Coordinating C Line on Penn Avenue with Hennepin County, and City of Minneapolis

- C Line BRT (Metro Transit)
 - Stations and related construction
 - Transit signal priority
- Penn Avenue (Hennepin County)
 - Intersection reconstruction partnership
 - Reconstruction from Lowry to Broadway
 - **Mill & overlay + ADA improvements, Plymouth–Broadway & Lowry–Dowling**
- Penn Avenue (Minneapolis)
 - Lighting



Implementation schedule



October-November 2016: Initial design considerations (intersection layouts, shelter & pylon placement)

January-February 2017: Review station layout (general station element arrangement, curblines)

September 2017: Share final station designs (placement of all station features, design treatments)

September 2017-March 2018: Share construction plans

2018: Construction

2019: C Line opens with service on Penn Avenue, Olson Highway

- Non-fleet project total cost:
\$20 million
- Funding Plan is to pursue Metro Transit funds to match available federal funding
- Planning for funding in place by late August







C Line Community Outreach



Station Neighbor Outreach -
Businesses and residents located in
the immediate vicinity of a proposed
station were engaged through in-
person visits and mailed letters.

Neighborhood and Community
Organizations Presentations and
Outreach



Pop-Up Outreach – Bus and Stop

Open Houses – Traditional and Mobile



The majority of C Line outreach has been focused on direct communication to station neighbors impacted by future C Line stations. These interactions have revealed specific needs or concerns of neighbors who have disabilities within the C Line corridor and have been integrated into design development.

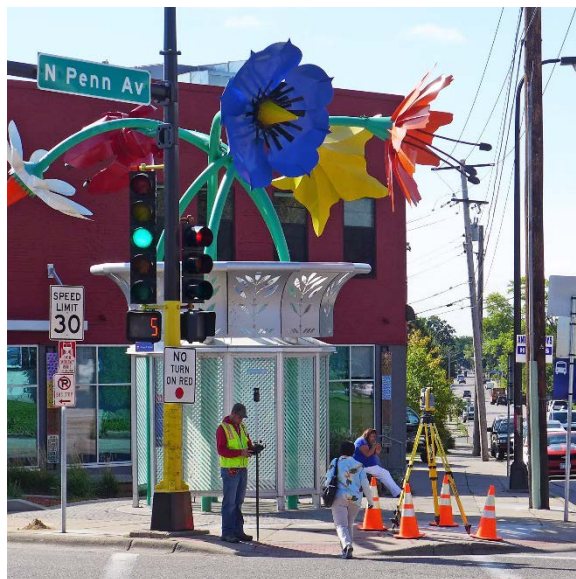
Where to find updates:

- Sign up for C Line Update Newsletter - metrotransit.org/c-line-project
- Community Meetings
- Presentations
- Project Partners:
 - Penn Avenue Community Works
 - City of Minneapolis

Who to contact:

- Project Hotline (Details coming soon)
- Metro Transit Community Outreach - Karyssa Jackson
- Metro Transit Customer Relation – 612-373-3333

metrotransit.org/c-line-project



Karyssa Jackson, Community Outreach Coordinator
612-349-7396 | Karyssa.Jackson@metrotransit.org

Shawn Walding, Senior Engineer
612-341-5668 | shawn.walding@metrotransit.org

BRT/Small Starts Project Office