

# Super Bowl LII Transit Service Overview



January 3, 2018

Dave Hanson, Mark Benedict, Christine Kuennen

## Trivia Question

- Which transit agency has not hosted a Super Bowl?
  - MARTA
  - NJ Transit
  - CTA
  - LA Metro
  - DART

# Supporting Thrive Principles

- Stewardship
  - No cost to taxpayer
- Prosperity
  - Global showcase for region
- Equity
  - Access to opportunity for all
- Livability
  - Unique regional celebration
- Sustainability
  - Most transit-dependent Super Bowl in history



## It's a Team Effort!

Coordinated planning across jurisdictions and disciplines:

- Metro Transit and Metro Mobility staff
- NFL and NFL Host Committee
- Homeland Security and Public Safety
- City of Minneapolis
- Public Works and Facilities
- Bloomington/MOA/Airport
- MNDOT
- US Bank Stadium
- Customers and Advisory Groups



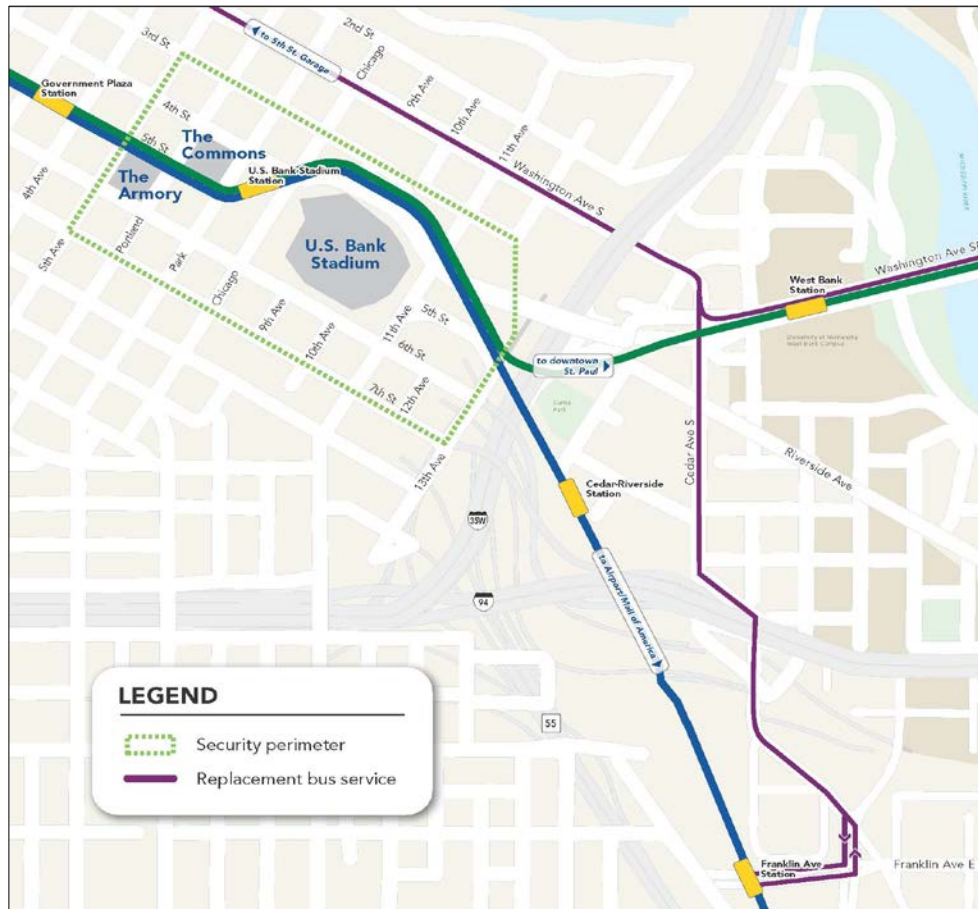
Original service proposal	Unrestricted light rail access	Current service plan
<ul style="list-style-type: none"> <li>96-hour shutdown of all light rail service in downtown Minneapolis</li> </ul>	<ul style="list-style-type: none"> <li>All customers and fans transfer to buses outside secure perimeter – no direct stadium access</li> </ul>	<ul style="list-style-type: none"> <li>Replacement buses on Blue Line, portion of Green Line on gameday, direct stadium access for fans</li> </ul>
<ul style="list-style-type: none"> <li>All customers and fans transfer to buses outside secure perimeter – no direct stadium access</li> </ul>	<ul style="list-style-type: none"> <li>Special boarding area at Mall of America – road closures, no transit advantage</li> </ul>	<ul style="list-style-type: none"> <li>U.S. Bank Stadium Station closes evening of Friday, Feb. 2</li> </ul>
<ul style="list-style-type: none"> <li>Light rail overloads</li> </ul>	<ul style="list-style-type: none"> <li>Light rail overloads</li> </ul>	<ul style="list-style-type: none"> <li>Managed light rail, bus boardings</li> </ul>
<ul style="list-style-type: none"> <li>No extra gameday revenue</li> </ul>	<ul style="list-style-type: none"> <li>No extra gameday revenue</li> </ul>	<ul style="list-style-type: none"> <li>\$600K fare revenue from SB attendees</li> </ul>

# Safety & Security

- Top tier national security event
  - SEAR 1 Rating
- Coordination with Homeland Security, regional law enforcement partners
- Secure perimeter around stadium beginning Feb. 2

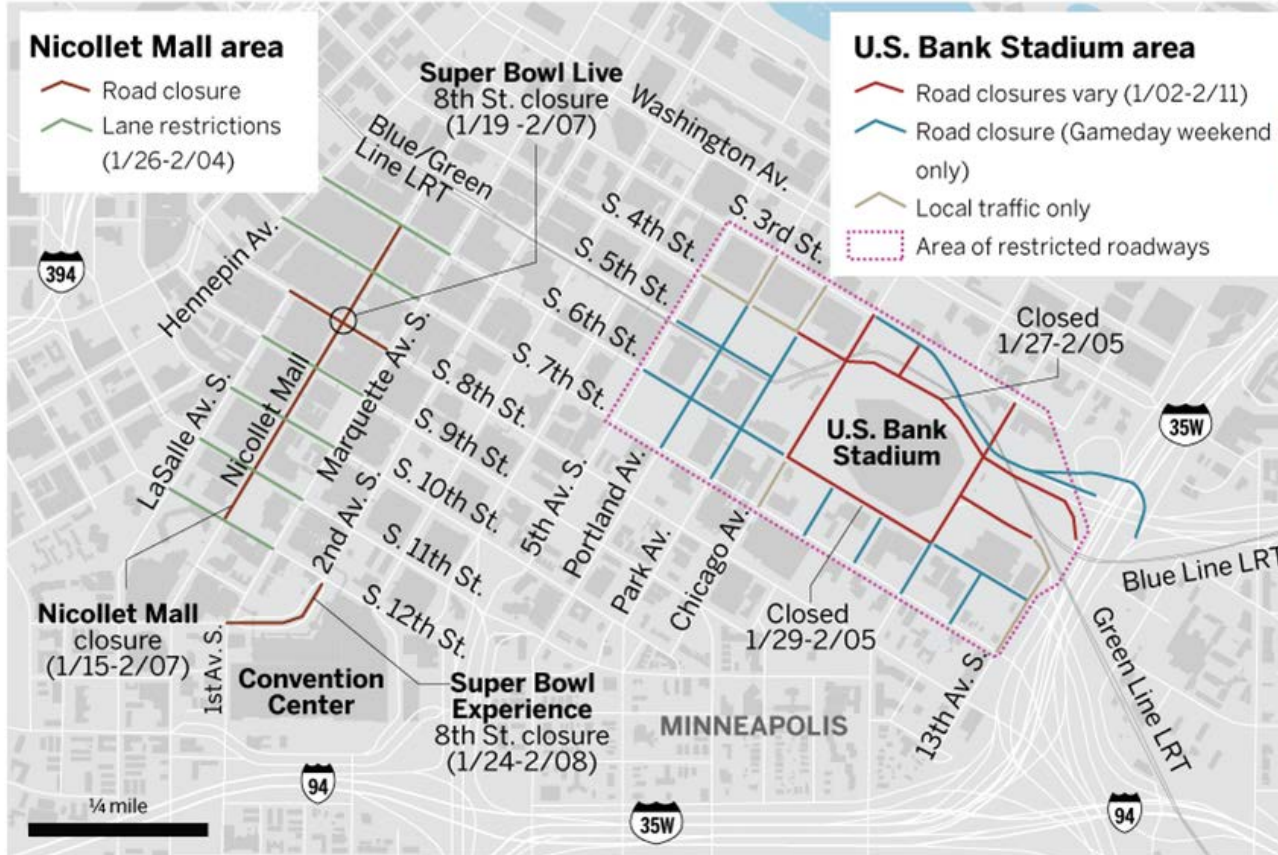


# “Secure Perimeter”



# Road Closures

## SUPER BOWL EVENTS ROAD CLOSURES



MARK BOSWELL • StarTribune



# Road Closures and MOA Station Relocation

Dates	Closures
Jan 2 – Feb 2	Norm McGrew: 3rd St – 4 <sup>th</sup> St Chicago Ave: 6 <sup>th</sup> to 4 <sup>th</sup> St 5th St : 11 Ave S – 13 <sup>th</sup> Ave S
Jan 13 – Feb 9	Nicollet Mall: 6 <sup>th</sup> St to 12 <sup>th</sup> St
Jan 13 – Jan 14	9 St: LaSalle to Marquette
Jan 15 – Feb 9	8 St: LaSalle - Marquette
Jan 15	<b>MOA Temporary Transit Station</b>
Jan 29 – Feb 5	6 <sup>th</sup> St: Chicago – 11th Ave S
Feb 2 – Feb 5	Intersection of 6 <sup>th</sup> St S and 11 <sup>th</sup> Ave closes

Coordination with City of Minneapolis Traffic Plan (152 pages)

## Pre-gameday operations

- Special service Jan. 26-Feb. 5
- Additional local, express bus service
  - Rt 94, 535, 724, 4, 10, 11, 17
  - Early and late out express service Feb. 1-2
- North star Commuter Rail extras



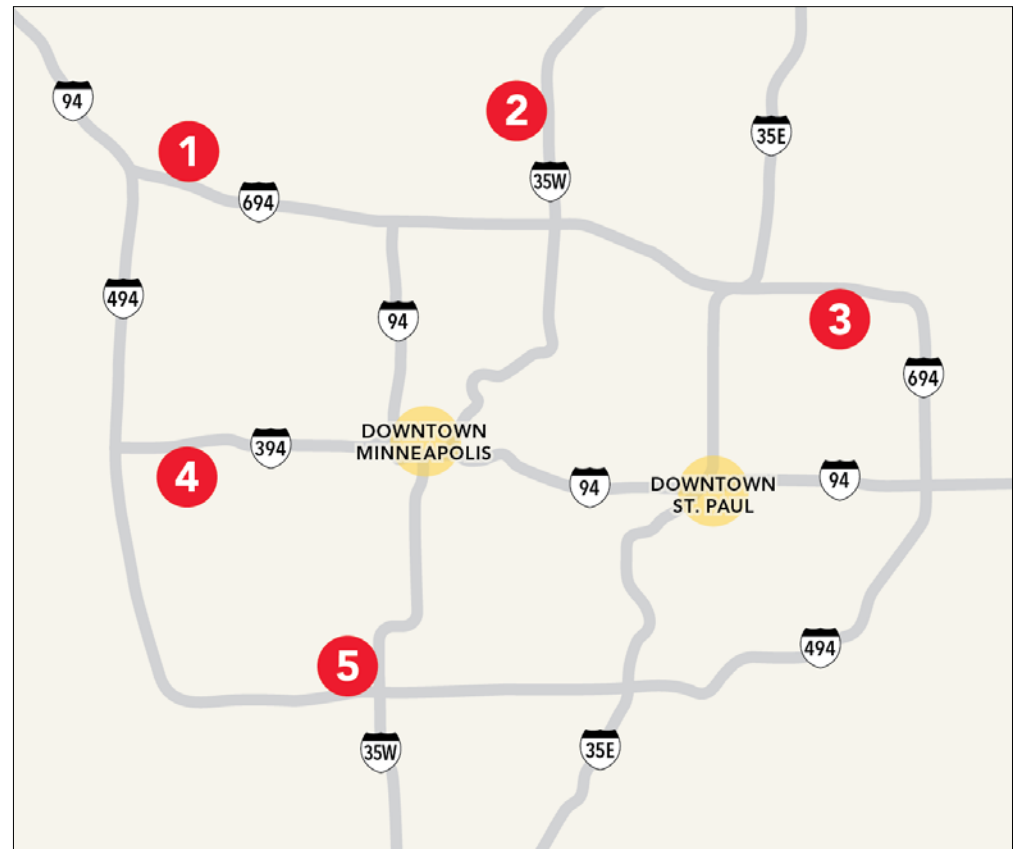
## Customer gameday service

- Regular Green Line service between Union Depot, Stadium Village
- Free replacement bus rides, departures every 10 minutes
- Heated shelters, ADA improvements



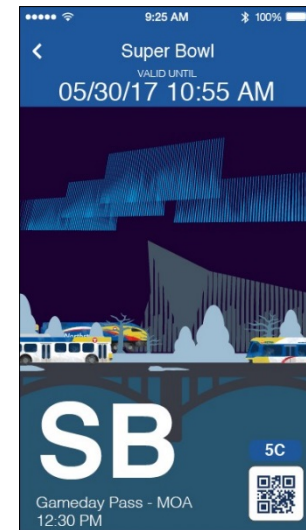
## Park & Ride service

- Express service provided Jan. 27-28 and Feb. 3
- Minnetonka, Blaine, Maplewood, Maple Grove, Bloomington
- All costs covered by fares



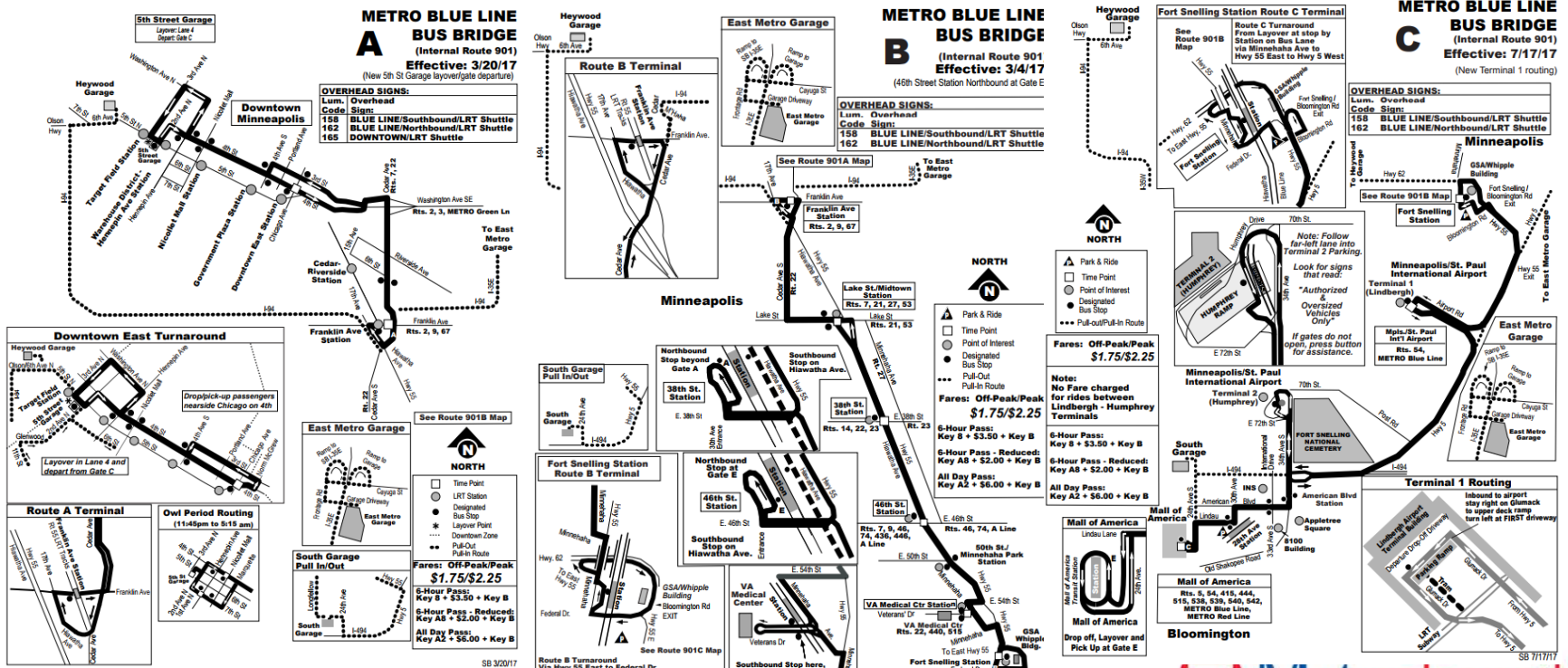
# Blue Line Gameday Service

- Security screening at MOA, train ride with tickets into stadium station
- Free replacement bus rides, departures every 10 minutes
- Heated shelters, ADA improvements



# Blue Line Bus Bridge (MOA to TFS) – 40 buses

- Service will mirror LRT Sunday schedule \*no onboard fares
- Shelters with heat installed for bus bridge stops
- Includes MAC shuttles



Blue Line Bus Bridge

# Green Line Gameday Service

- Security screening at Stadium Village, train ride with ticket into stadium station
- Regular Green Line service between Union Depot, Stadium Village
- Free replacement bus rides, departures every 10 minutes



# Post-game operations



**Blue Line**  
270 buses



**Green Line**  
60 to 90 buses

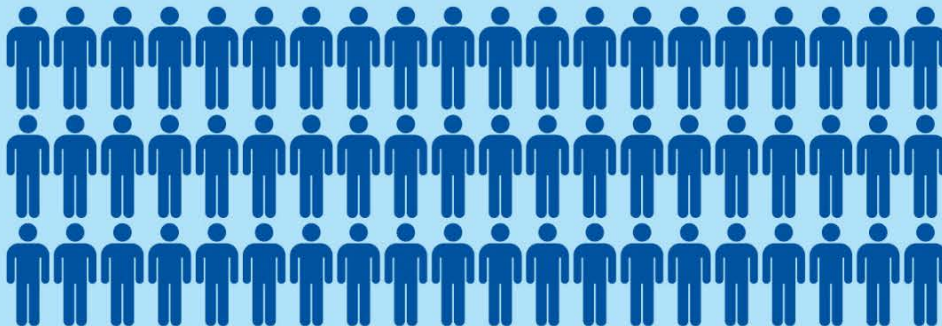


**Blue Line**  
30\* LRVs



**Green Line**  
10\* LRVs

\*estimated

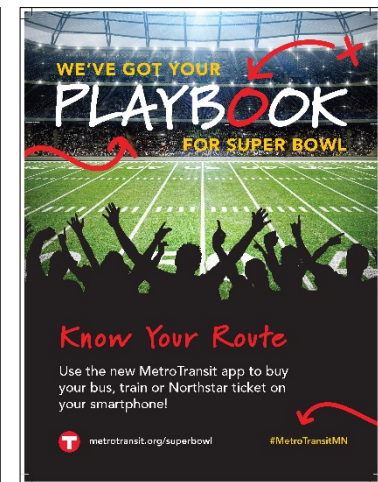
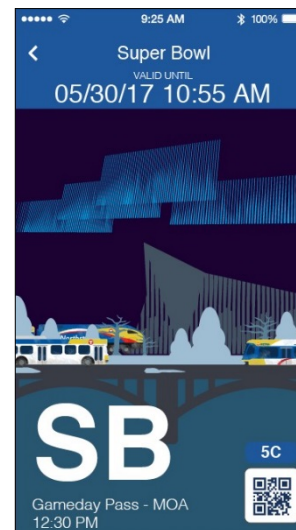


 = 10 people



# Metro Transit Customer and fan information

- NFL Host Committee “Know Before You Go” website
- Employee ambassadors and Host Committee volunteers
- [metrotransit.org/superbowl](http://metrotransit.org/superbowl)
  - Fan and customer-oriented information
- Rider Alerts
- Social media

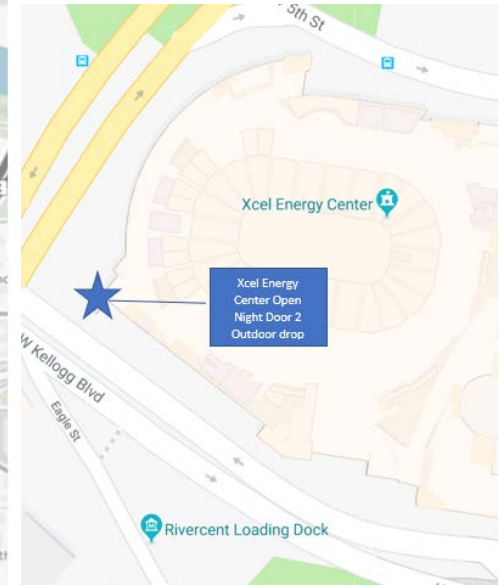
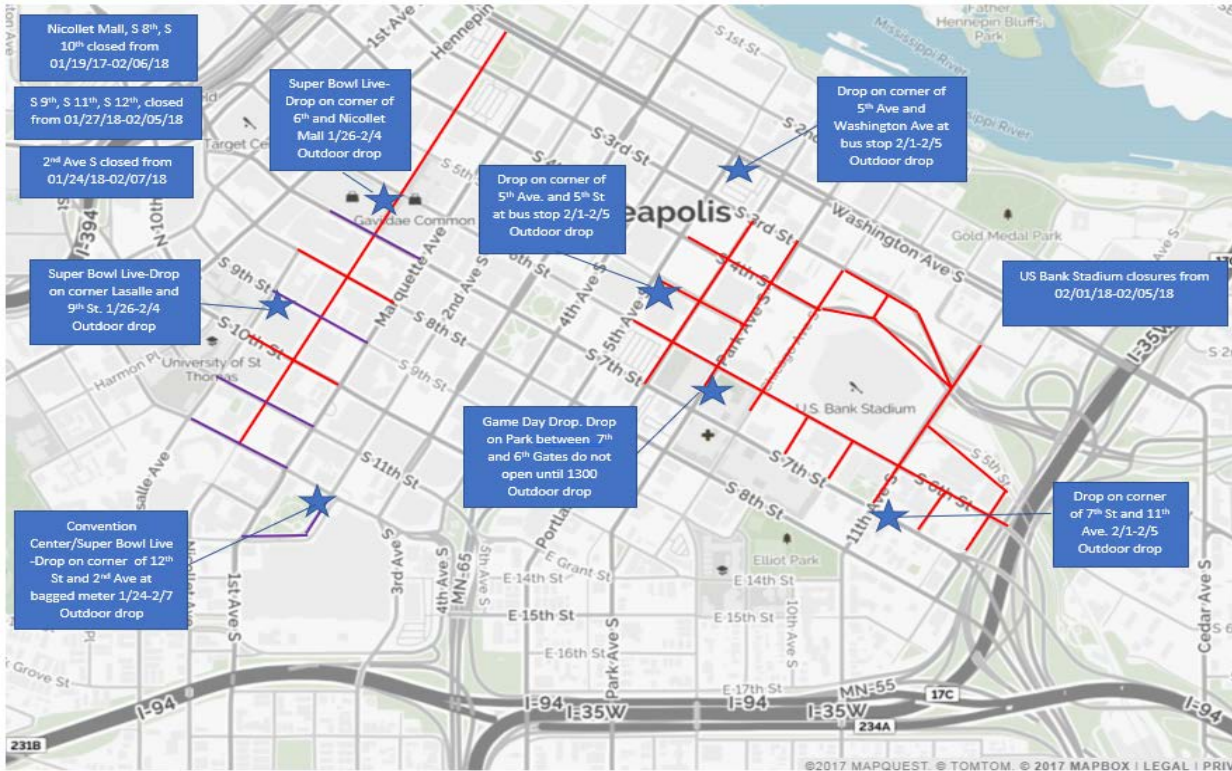


# Metro Mobility Impacts Overview

- Regular Service:
  - Service delays and OTP impacts due to road closures and congestion:
    - Additional bus driver and supervisor staffing
    - Maximize fleet availability
  - Regular Reservations and Fare Policies apply
  - Out of town guests have eligibility for 21 days
- Outdoor Pick-Up/Drop off bus stops
  - Opening Night (Xcel Center)
  - Nicollet Mall (Super bowl Live) (12<sup>th</sup> St / 6th St / 9<sup>th</sup> St)
  - Minneapolis Convention Center (NFL Super bowl Experience)
  - Around US Bank Stadium perimeter during full closure



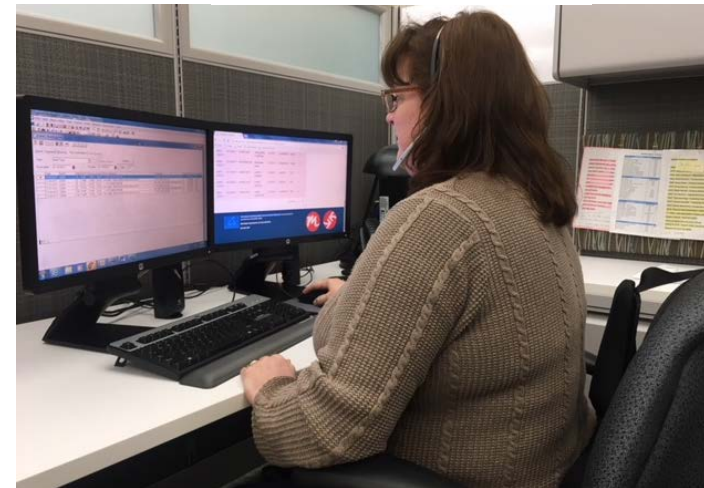
# Proposed Metro Mobility Drop off/pick up sites\*



\*Maps displayed for planning purposes. Not final for publication

# Metro Mobility Customer and Fan Information

- NFL Host Committee “Know Before You Go”
- Jan 5<sup>th</sup>: Metromobility.org
  - Dedicated Super bowl information page
  - Designated Stop Maps
  - NFL Mobility Assistance contact for game day escort and other info.
- GovDelivery email to Metro Mobility and Council newsletter lists (1/8)
- Social Media (1/15, 1/29)
- Expanded MMSC hours Feb 3, 4



# Questions?

## **Mark Benedict**

Director Light Rail Operations, Metro Transit

612-341-5680

[Mark.Benedict@metrotransit.org](mailto:Mark.Benedict@metrotransit.org)

## **Dave Hanson**

Assistant Director Bus Operations, Metro Transit

612-349-7460

[David.Hanson@metrotransit.org](mailto:David.Hanson@metrotransit.org)

## **Christine Kuennen**

Senior Manager Metro Mobility

651-602-1689

[Christine.Kuennen@metc.state.mn.us](mailto:Christine.Kuennen@metc.state.mn.us)