

BETTER  STOPS  
**Five-year program**  
**and**  
**Regular-Route Bus Stop Design Guide**

Transportation Accessibility Advisory Committee

August 4, 2021

Berry Farrington and Sonja Burseth

Engineering & Facilities

## Better Bus Stops is Metro Transit's commitment to improving the customer experience at the bus stop.

- Transit information, accessible boarding areas and pedestrian connections
- Shelters, maintenance, and occasionally lighting and heaters



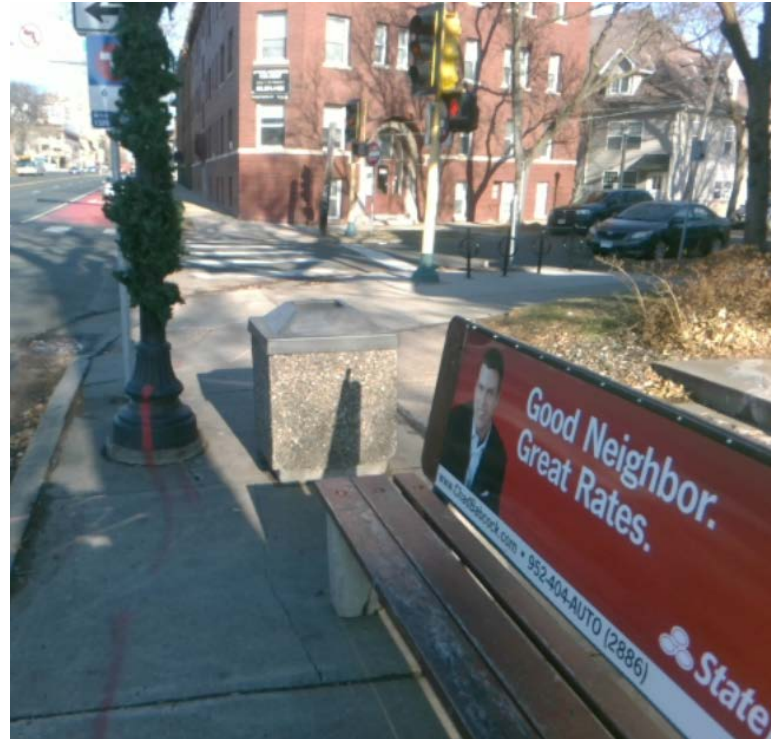
# Better Bus Stops Five-year Goals

- ❑ People of color continue to have equitable access to shelters, light and heat.
- ❑ All bus stops with shelters have accessible boarding areas, pedestrian access, and clear spaces.
- ❑ Availability of accessible transit stops increases.
- ❑ Construction projects result in accessible bus stops.



# Bus stop accessibility checklist

- Paved or hard surface
- Boarding area dimensions
- Boarding area cross slope
- Boarding area condition
- Obstacles
- Connection to pedestrian route



# Shelter accessibility

- Inventoried field conditions at shelters 2019-2020
- Shelter accessibility
  - Shelter bench length
  - Shelter fit within the site



# Strategies

- Five-year capital plan
  - Install up to 120 shelters
  - Replace up to 150 shelters
  - Improve boarding areas at up to 150 bus stops (without shelters)
- Data improvements
- Design guidance for roadway and development projects





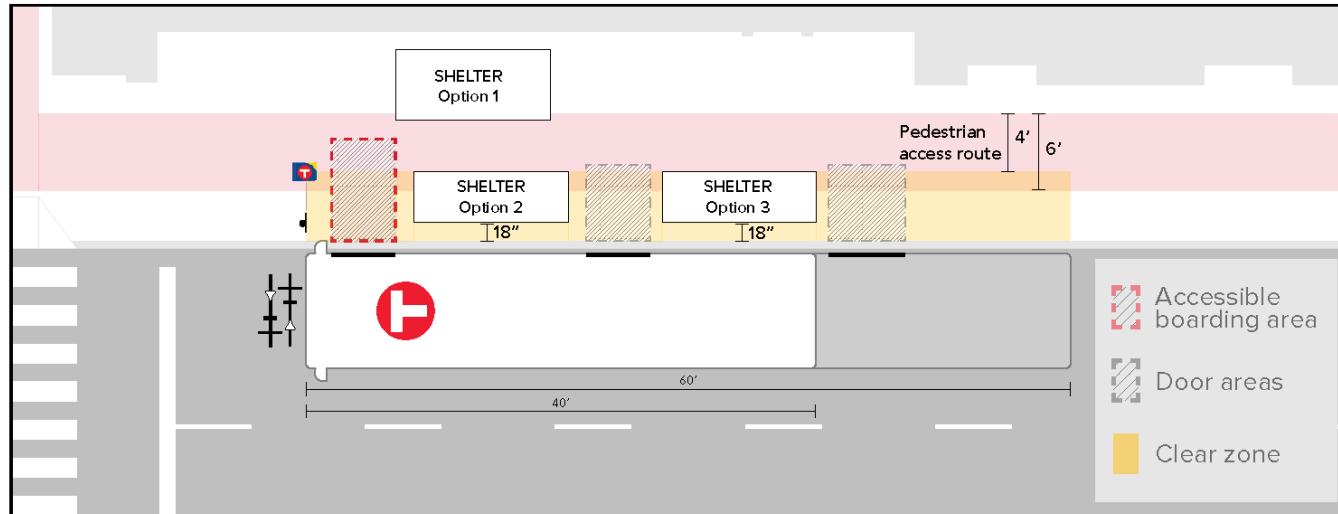
BETTER  STOPS

# Regular-Route Bus Stop Design Guide

# Why is this Guide needed?

## Bus Stop Zone Design: Shelters and PAR

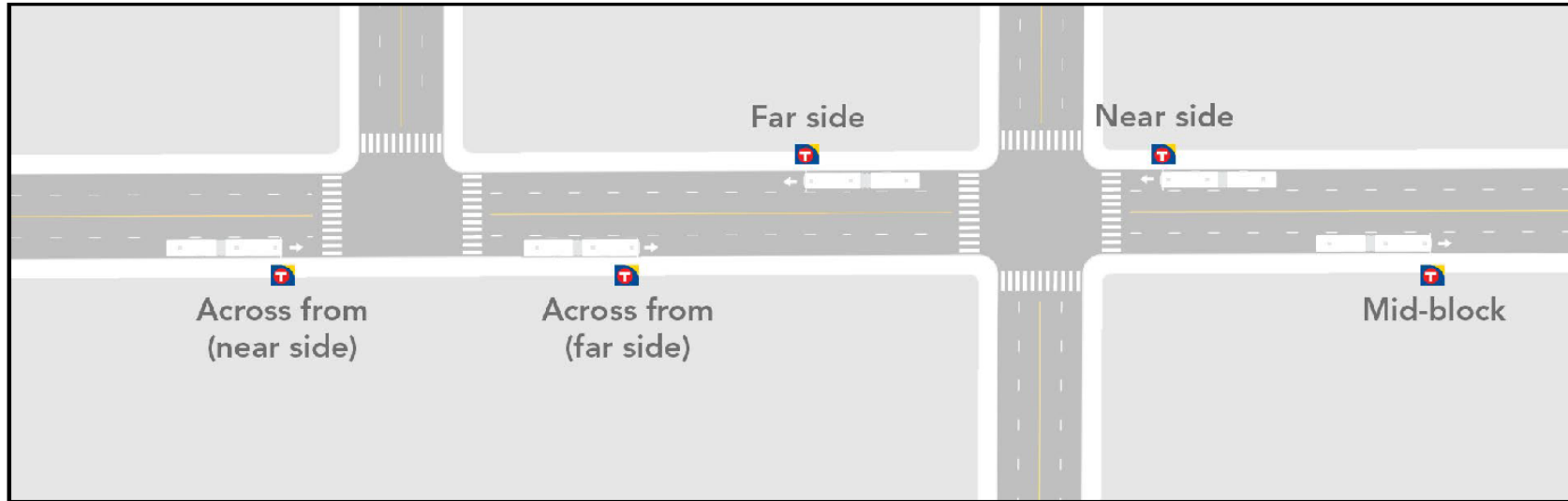
Figure 18 Bus stop clear zone with shelter location options





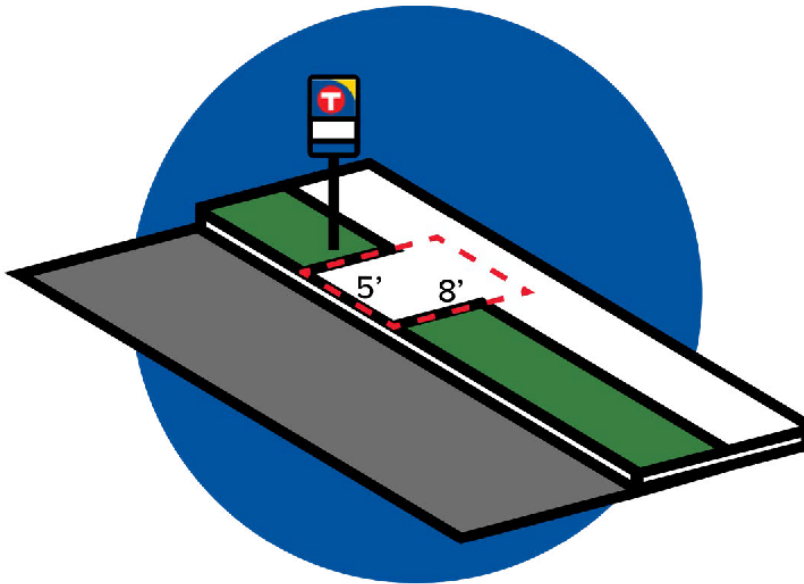
# Pages of the Guide (1/1): Bus stop position

Figure 3 Bus stop positions: near side, far side, mid-block and across from



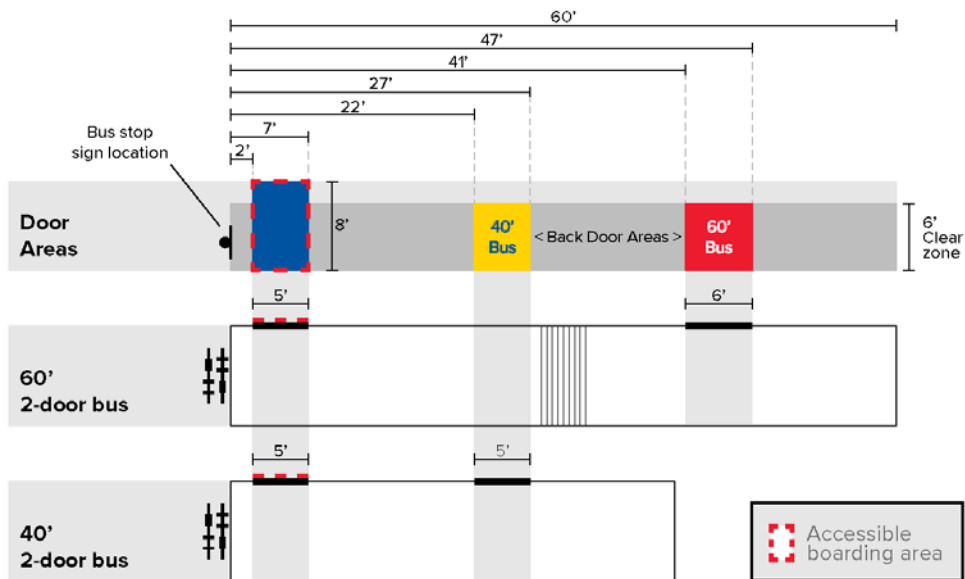
# Pages of the Guide (2/2): Bus stop zone design – Accessible boarding area

Figure 15 Accessible boarding area (ADA pad)



# Pages of the Guide (3/3): Bus stop zone design – Clear zone

Figure 13 Clear zone and door zones at bus stops with common Metro Transit buses



# Conclusion

- What are your experiences with bus stop accessibility?
- Are there bus stop accessibility topics you would like to discuss in the future?
- Questions or comments?

## Thank you

Berry Farrington, [Berry.Farrington@metrotransit.org](mailto:Berry.Farrington@metrotransit.org)

Sonja Burseth, [Sonja.Burseth@metrotransit.org](mailto:Sonja.Burseth@metrotransit.org)

Engineering & Facilities