

# AIRPORT DEVELOPMENT ANNUAL CONSTRUCTION REVIEW and PREVIEW



# Airport Planning Documents the Capital Improvement Program




**Minneapolis – St. Paul  
International Airport (MSP)**  
2030 Long Term Comprehensive Plan Update




July 26, 2010



**Minneapolis-St. Paul International Airport**  
MINNEAPOLIS, MINNESOTA



**VOLUME I:** **2020 Improvements**  
**Final Environmental Assessment /**  
**Environmental Assessment Worksheet**



January 2013

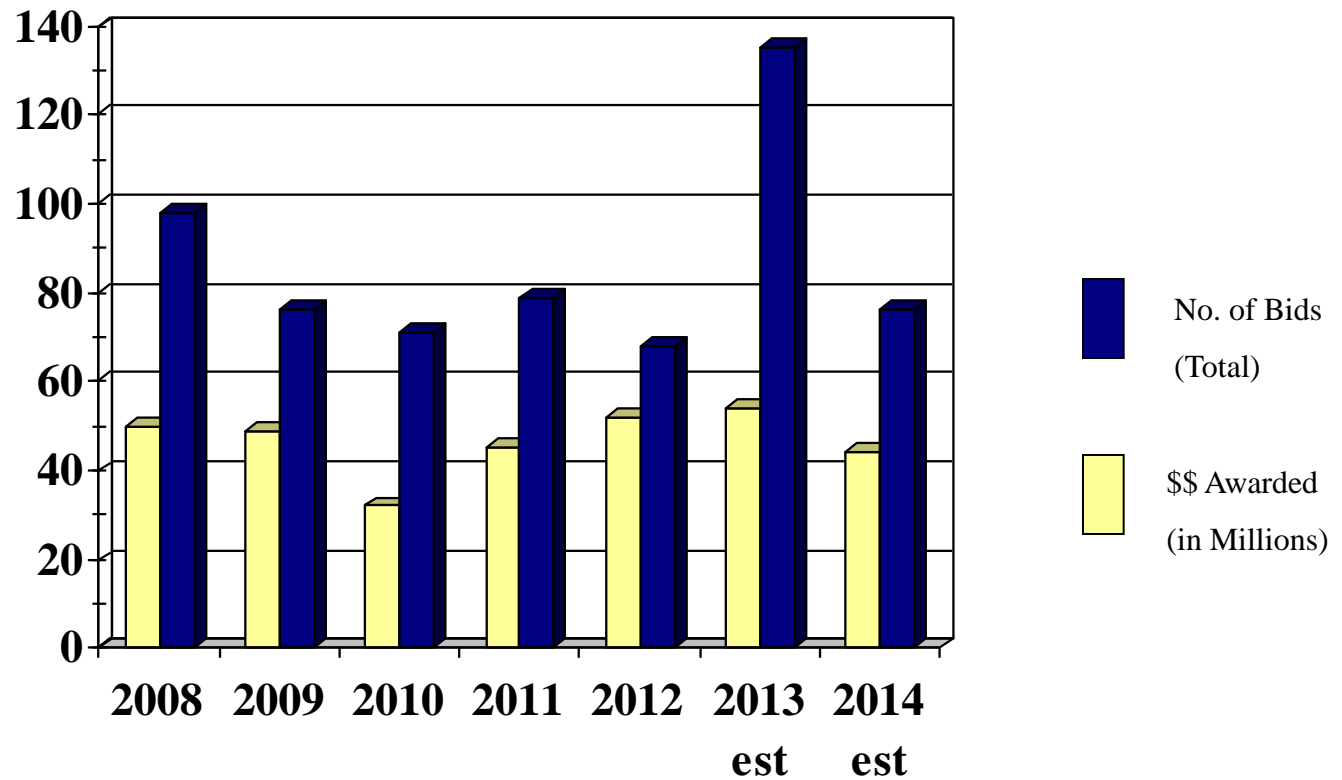
Prepared for:  
**Metropolitan Airports Commission**

This environmental assessment becomes a Federal document when evaluated, signed, and dated by the Responsible FAA Official.

\_\_\_\_\_  
Responsible FAA Official

\_\_\_\_\_  
Date

# Airport Development Annual Construction Contracts





# 2012 Construction Review





# 2012 Projects 52 PROJECTS; \$68 MILLION AWARDED

MAC IS Data Center

Electrical Infrastructure Rehab

Concourse G Fire Protection

T1 Restroom Upgrades

Energy Improvements

North Side Storm Sewer Imps

Storm Pond #4 Dredging

Folded Plate Drain & Roof Repairs

Parking Structure Rehabilitation

T2 Curbside Canopy Repair

Post Road Fuel Farm Fire Protection

Runway 30R MALSF

STP Taxiway A Pavement Replacement

T1 & T2 Concession Infrastructure

T2 Security Check Point Projects

T1 Apron Pavement Rehabilitation

Art in the Terminal

Perimeter Gate Security Imps

T1 IB/OB Roadway Monumentation

Building F Tower Demolition

Campus Terminal Modifications

Runway 12R/30L Tunnel Imps

OTG Concession Mods

T1 Checked Baggage (CBIS)

Flying Cloud & Crystal Alley Rehab

Crystal Signage Improvements

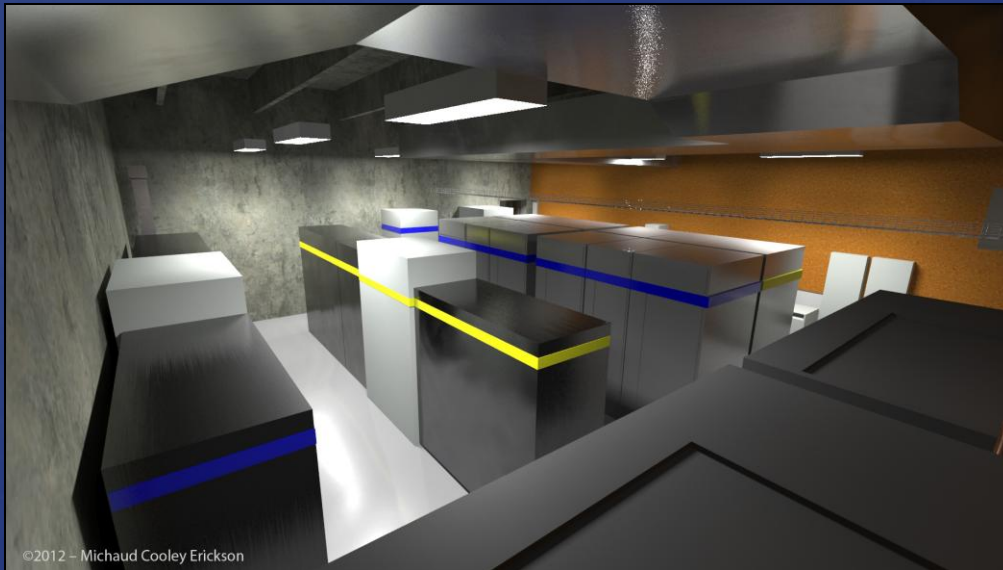
Lake Elmo Runway 14-32 Rehab

STP Admin Bldg Entrance Mods



MAC IS Data Center

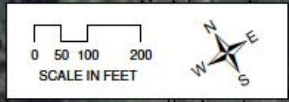




MAC IS Data Center



# PROPOSED RUNWAY 30R MALSF



- PROPOSED MALSF LIGHT BAR
- PROPOSED THRESHOLD LIGHT BAR

**TKDA**  
PLANNING • PLANNING • PLANNING

3/1/05

Runway 30R MALSF Approach Lighting System





Runway 30R MALSF Approach Lighting System





T1 - Lindbergh Restroom Upgrades





T1 - Lindbergh Restroom Upgrades



T2 - Humphrey Checkpoint #1





T2 - Humphrey Checkpoint #1





T2 - Humphrey Checkpoint #1





T2 - Humphrey Checkpoint #2 - Remodel





T2 - Humphrey Checkpoint #2 - Remodel





Building F Tower Demolition



Building F Tower Demolition





Building F Tower Demolition



T1 - Lindbergh Inbound/Outbound Roadway Monument Sign



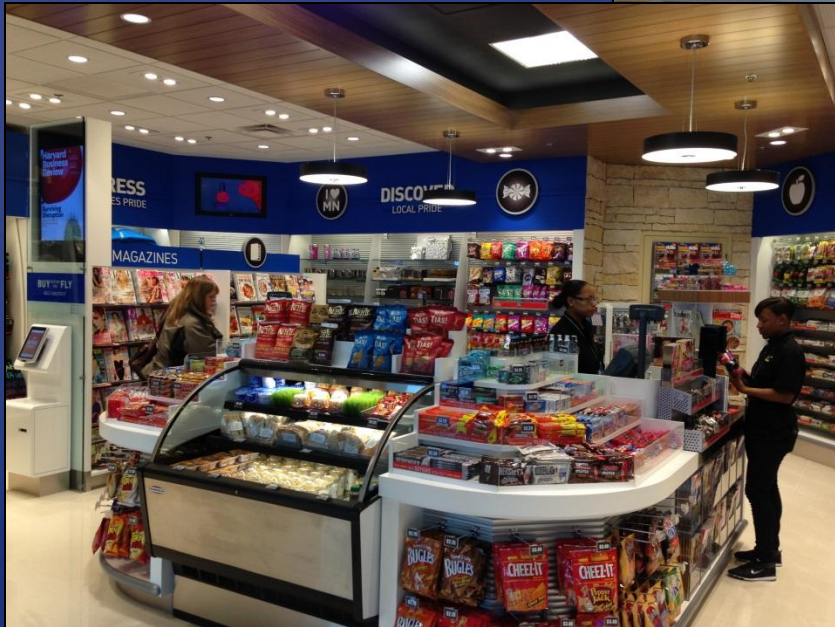


T1 - Lindbergh Inbound/Outbound Roadway Monument Sign



T2 - Humphrey Concessions Program





T2 - Humphrey Concessions Program





T1 - Lindbergh Concessions Program





OTG Concessions Program





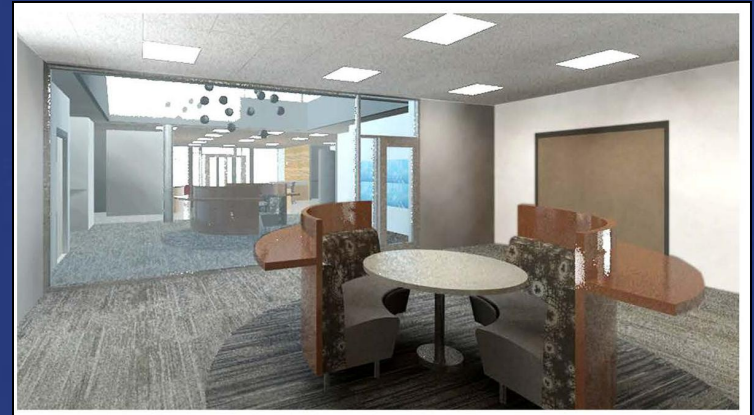
OTG Concessions Program



What lies ahead?



# 2013 Project Preview





# 2013 Projects 50 Projects; \$96 Million Const. Est. or 54/\$135 w/ROD

Trades Building Cooling System

T2 RAC Ready Return

Electrical Infrastructure Rehab

T2 RAC Customer Service Building

Concourse G Roof Replacement

T2 RAC Quick Turnaround Facility

T1 Baggage Claim Fire Protection

I-494/34<sup>th</sup> Ave Interchange (DDI)

T1 Beam-Seating Replacement

T2 - Apron Expansion

Parking Structure Rehabilitation

Conveyance System Upgrades

T2 Checked Baggage (CBIS)

Telecon Room Equipment Continuity

T1 Apron Pavement Rehabilitation

Emergency Power Upgrades

Runway 12R/30L Tunnel Mill & Overlay

Flying Cloud Runway 18/36 Shift and

T1 - FIS (CBP) Expansion

Extension/Perimeter Road

General Office Building Modifications

Airlake / Lake Elmo Pavement Rehab

Zantop Hangar Demolition

St. Paul Storm Sewer Improvements

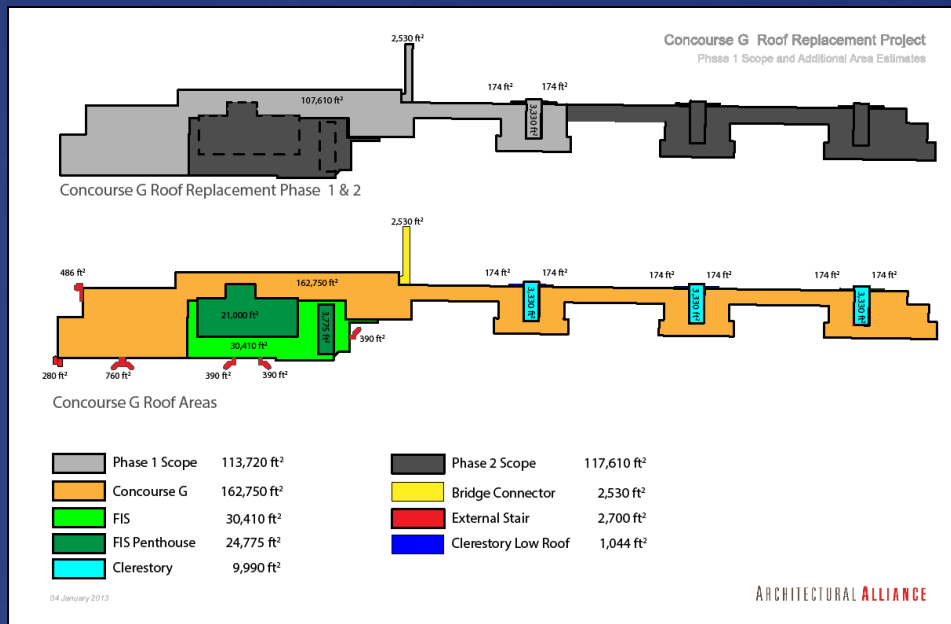
EVIDs and Wayfinding Signage

Anoka East Alleyway Rehabilitation

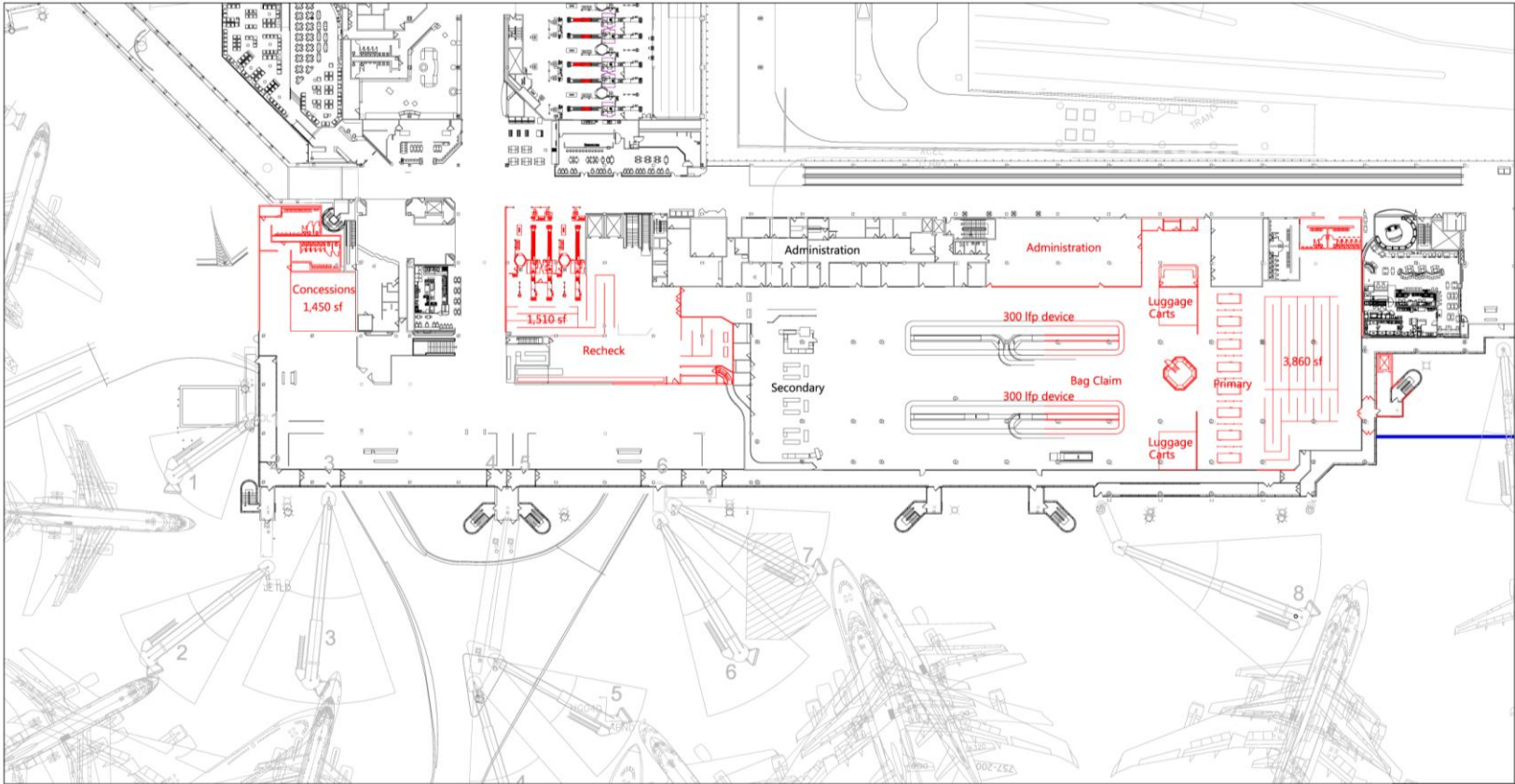


T1 - Lindbergh Baggage Claim Fire Protection





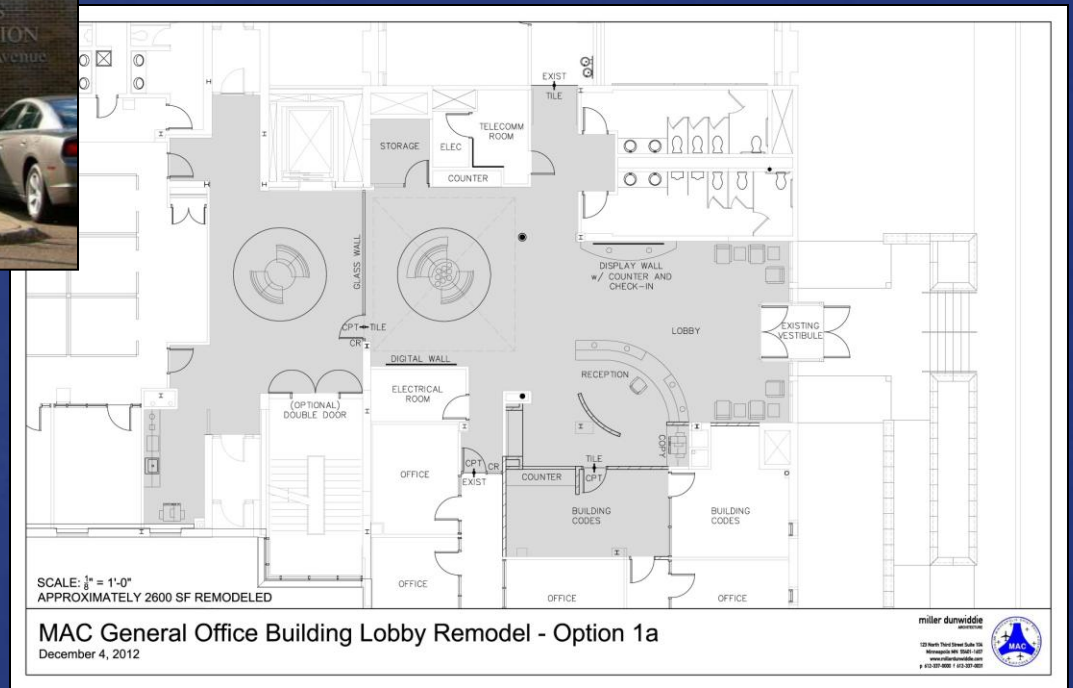
T1 - Lindbergh G Concourse Roof Replacement



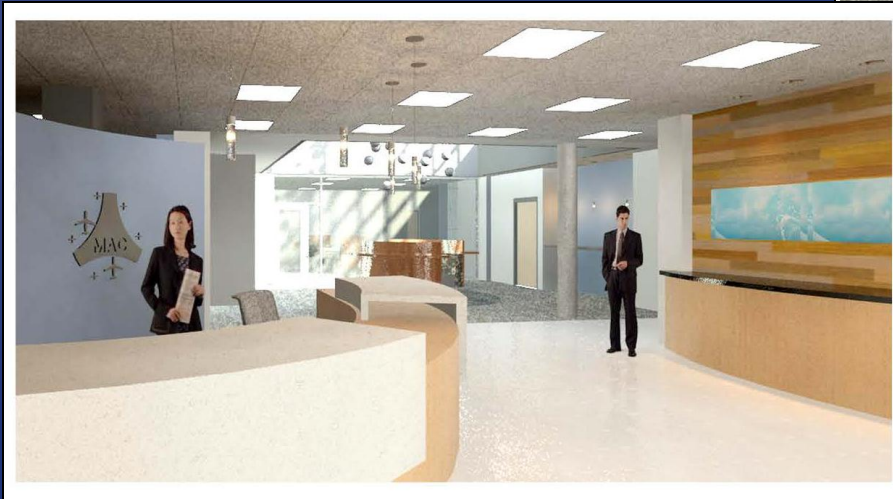
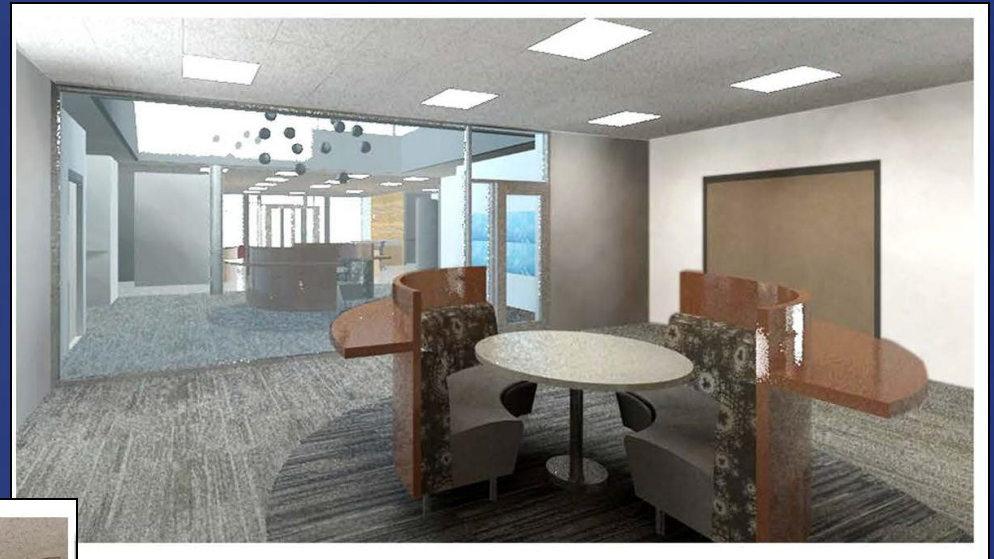
SOURCE: Ricordo & Associates, Inc., October 2012  
PREPARED BY: Ricordo & Associates, Inc., October 2012.

# T1-G Concourse FIS Expansion





# General Office Building Modifications



General Office Building Modifications





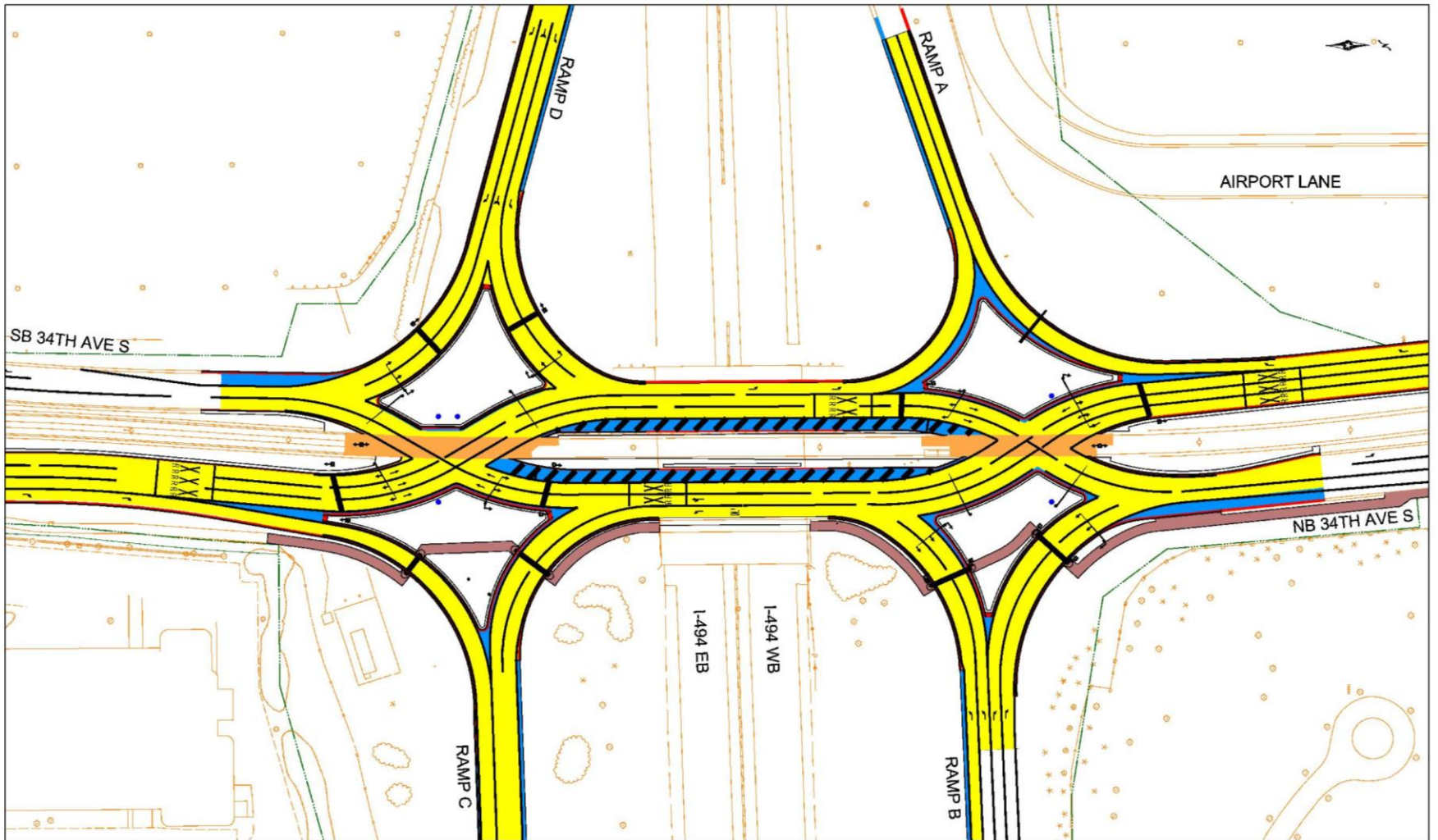
Zantop Hangar Demolition



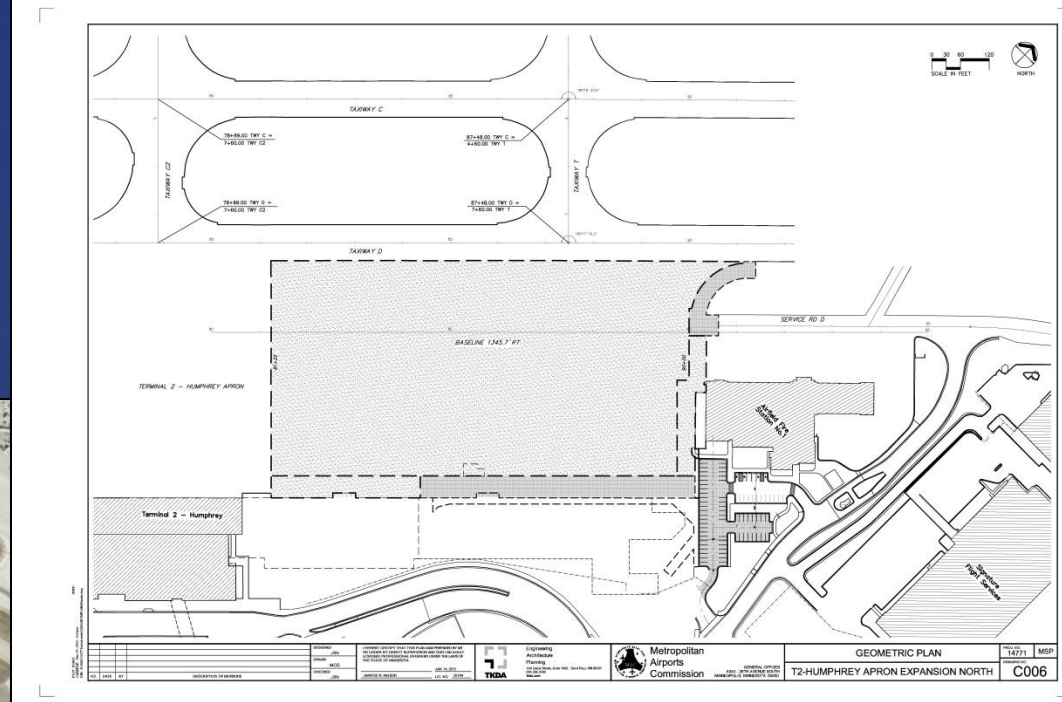
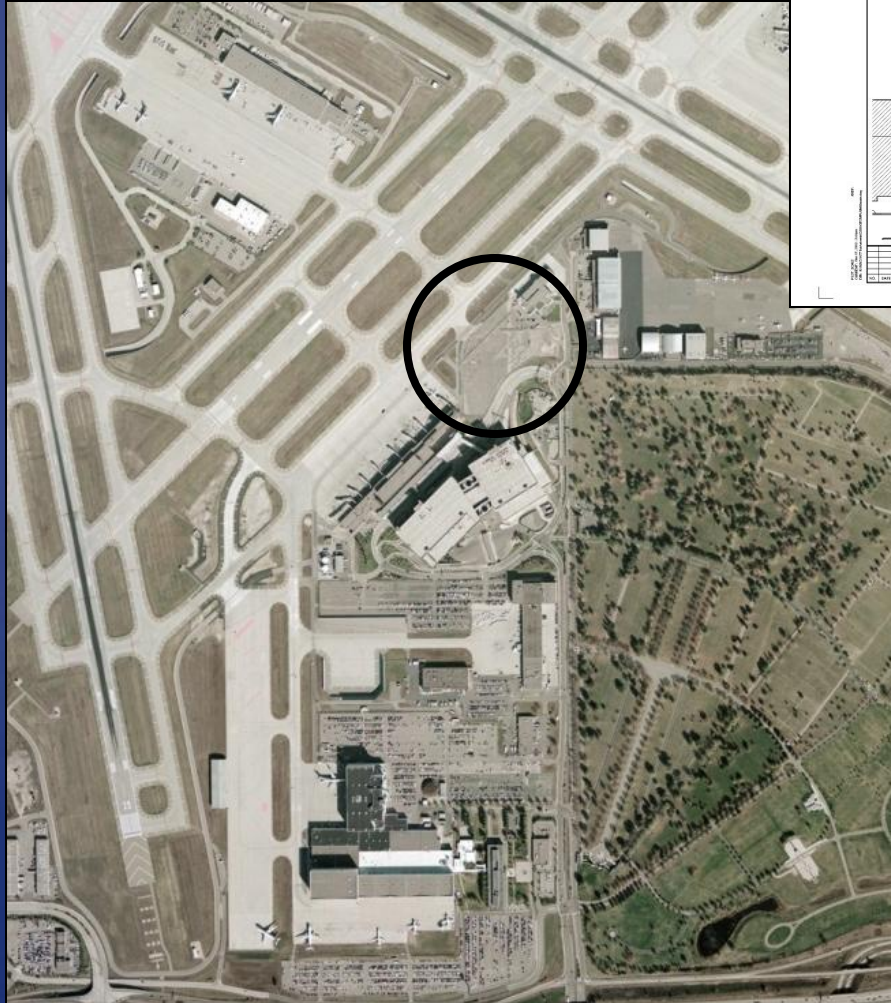


T1 - Lindbergh Seating Improvements



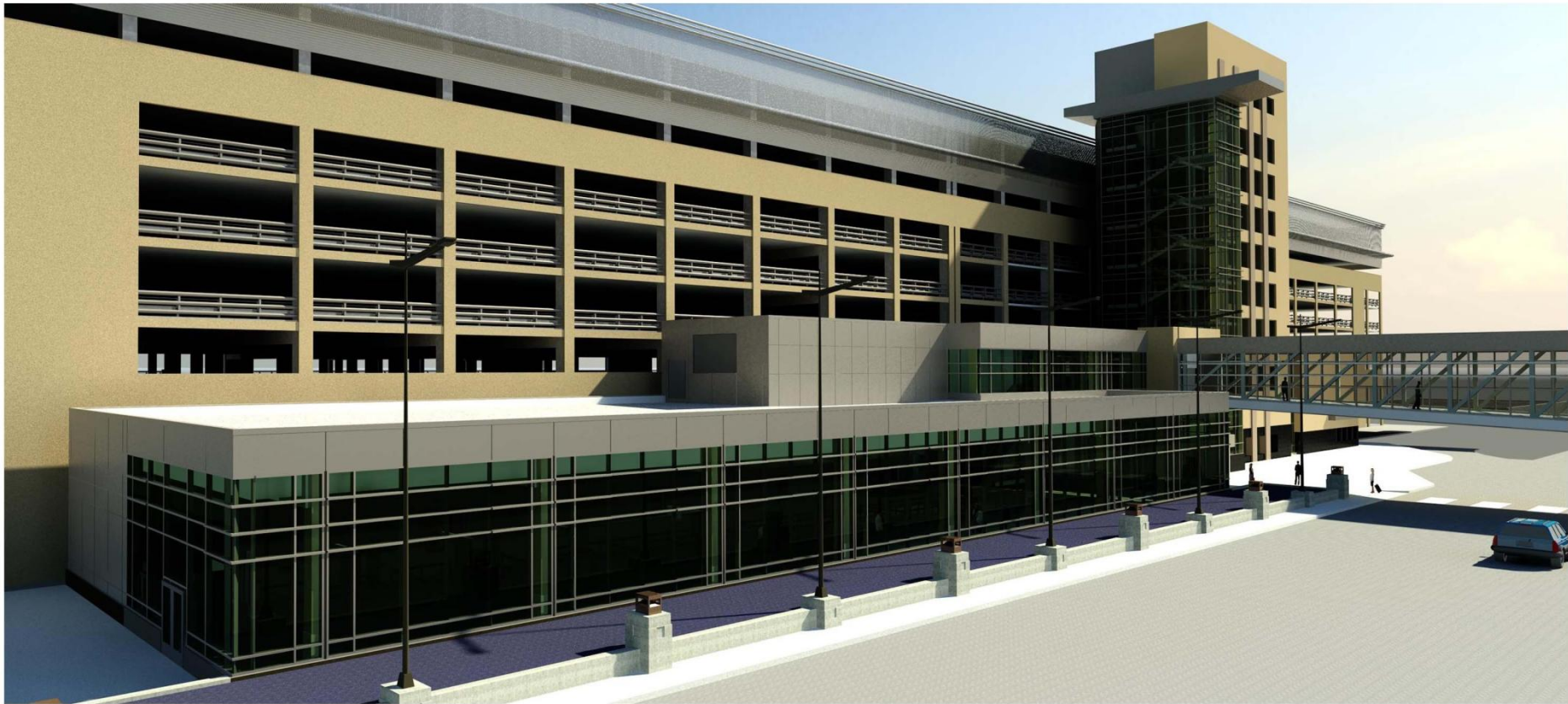


I-94/34<sup>th</sup> Avenue Diverging Diamond Interchange



T2 - Humphrey Apron Expansion



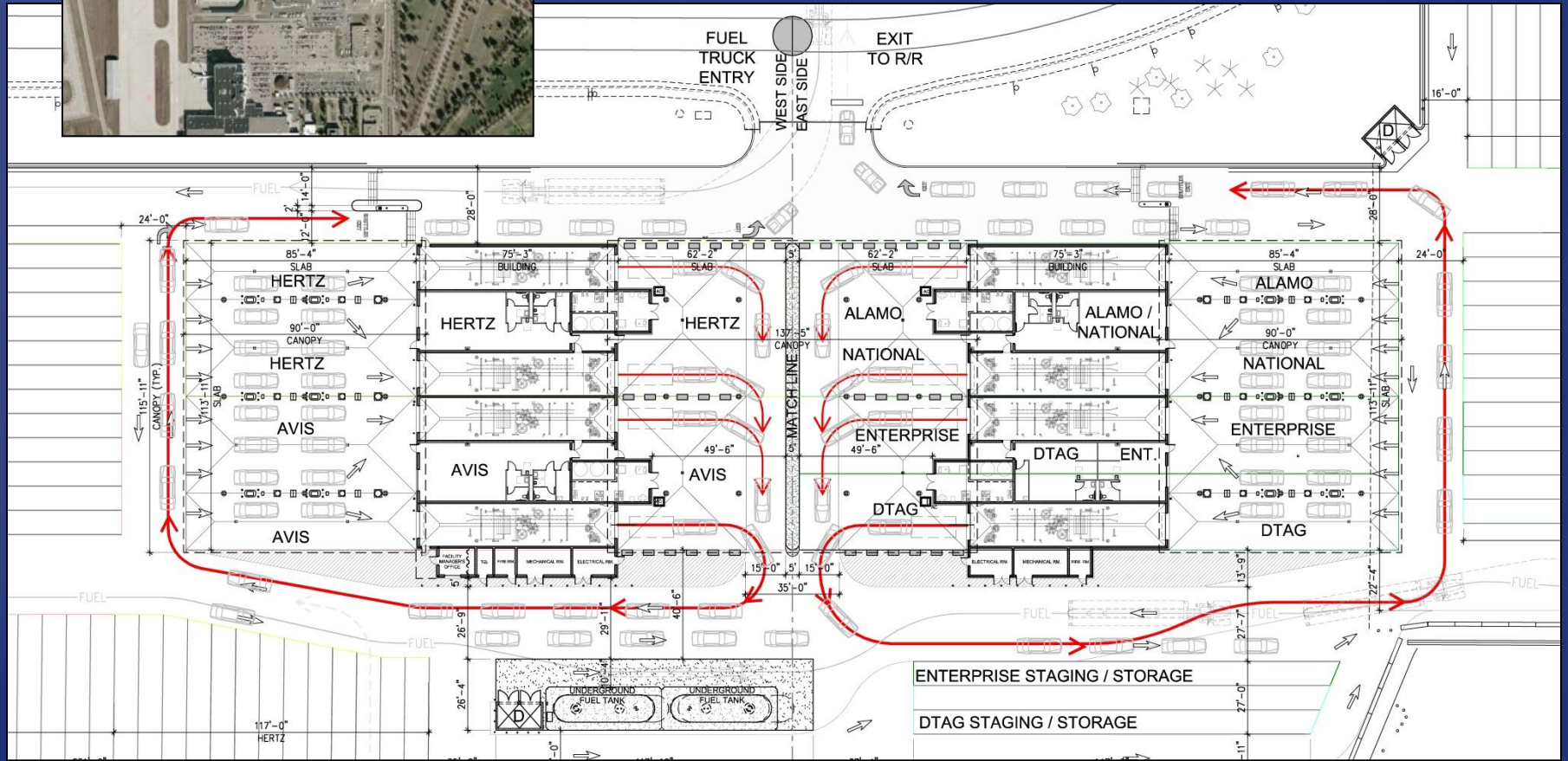
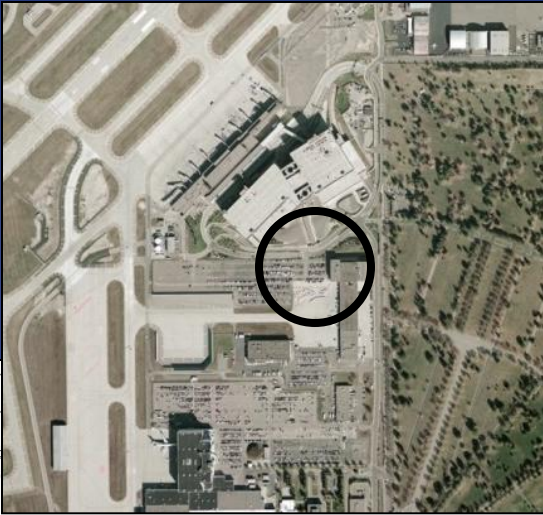


T2 - Humphrey Rental Auto Center (RAC)  
Customer Service Building



T2 - Humphrey RAC Ready Return Expansion  
Vertical Circulation to Mezzanine Level





T2 - Humphrey RAC Quick Turnaround (QTA) Facility



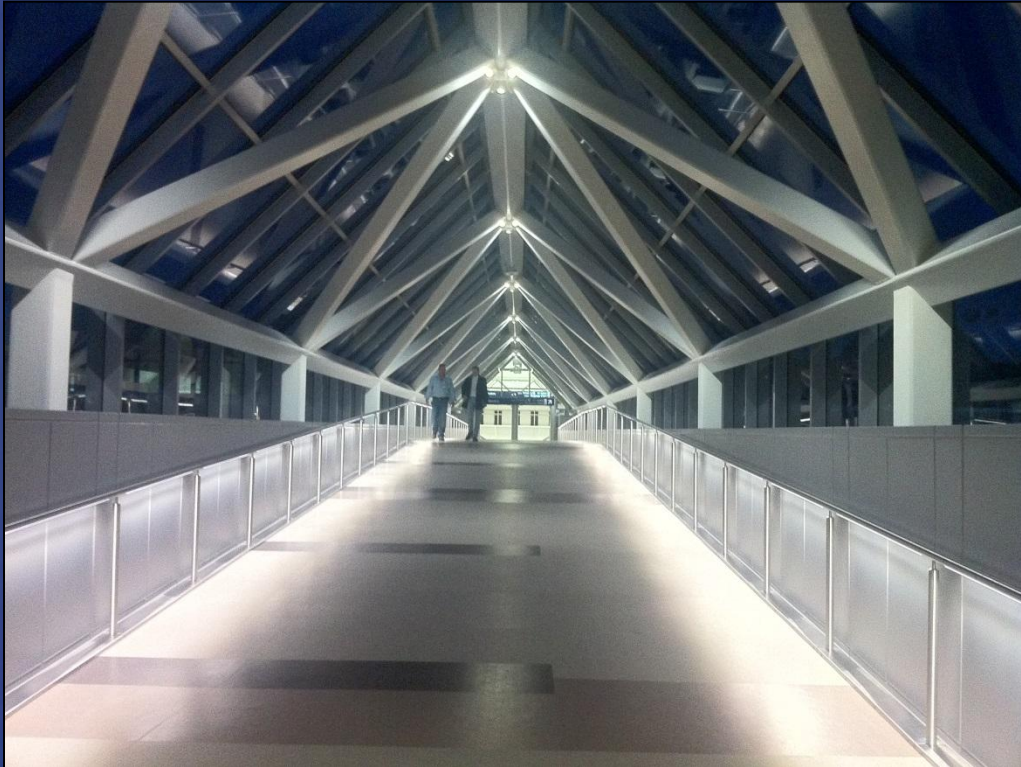
T2 RAC Quick Turnaround Facility  
(72<sup>nd</sup> Ave Inbound View)





Flying Cloud Runway 18-36 Shift / Extension  
and Perimeter Road Construction

# Questions?



*Thank you!*

Bridget Rief, P.E.

Director - Airport Development

612-725-8371

[bridget.rief@mspmac.org](mailto:bridget.rief@mspmac.org)

