

## **ACTION TRANSMITTAL 2015-49**

**DATE:** December 10, 2015  
**TO:** Transportation Advisory Board  
**FROM:** Technical Advisory Committee  
**PREPARED BY:** Russell Owen (651) 602-1724  
**SUBJECT:** Review of Metropolitan Airports Commission 2016-2022 CIP  
Capital Improvement Program (CIP)  
**REQUESTED ACTION:** MAC requests that the Metropolitan Council review the 2016-2022  
MAC CIP as required by MN Statutes 473.181 and 473.621  
**RECOMMENDED MOTION:** Recommend acceptance of the analysis below concerning the  
MAC 2016-2022 Capital Improvement Program (CIP) and forward  
these comments to the Metropolitan Council for its consideration.

### **BACKGROUND AND PURPOSE OF ACTION:**

The MAC annually prepares a CIP for projects at MSP International Airport and their six General Aviation reliever airports. Under state statutes 473.181 and 473.621 the Council must:

- Determine adequacy of public participation in the CIP process,
- Approve CIP projects meeting certain dollar thresholds, 5 Million at MSP and 2 Million at all reliever airports and “significant effects” criteria (referenced in Table 4, A-H),
- Review and comment on all projects for consistency with the Transportation Policy Plan (TPP), including planning and environmental concerns.

In order to allow letting of projects early enough for construction to start in the spring, the Council has agreed to utilize the draft CIP document released in September to expedite the review. The MAC will take action on December 21st to adopt the final 2016-2022 CIP; any changes from the draft will be incorporated into the 2016 CIP review report that goes forward to the Met Council in January. Any changes identified after the MAC Commission action will be reported to TAB. Any comments provided by TAC/TAB will be included for consideration with the final review report submitted by staff for Council action. Following the TAC- Planning meeting, MAC staff reported that there are a few projects that are moving between the 2016 and 2017 years. The projects moving from 2017 to 2016 include the Hotel Skyway project, while the DHL cargo building addition is moving from 2016 to 2017.

### **RELATIONSHIP TO REGIONAL POLICY:**

The Metropolitan Council is required by state law to annually review of the MAC CIP to ensure consistency of proposed projects with regional plans. Although state law doesn't

require TAC/TAB to review the MAC CIP, staff traditionally has sought TAC/TAB comments in the review process.

**STAFF ANALYSIS:**

Analysis confirms that an Assessment of Environmental Effects (AOEE) has been prepared for 2016 projects with potential environmental effects, and MAC has in place an adequate public participation process for development and review of its AOEE and CIP. MAC held a public hearing on the AOEE on November 2nd, at 10:30 AM at the Planning, Development and Environment Committee meeting at the MSP Conference Room.

The following 2016 projects meet the dollar threshold levels but do not meet the other “significant effects” criteria to trigger project approval:

- MSP - Mezzanine HVAC/AHU Replacements – \$ 16.7M
- MSP - Vertical Circulation Improvements - \$34.2M
- MSP - Terminal 1, Parking Ramp - Northwest Grade Separation - \$15.5M
- MSP - Terminal 1, Parking Ramp - Cargo and Stores Building - \$10.5M
- MSP - Terminal 1, Parking Ramp - Roadway and Plaza Relocation - \$100M
- MSP - Terminal 1, Parking Ramp - Parking Structure and RAC Facility - \$24M
- St. Paul - Runway 14/32 Pavement Rehabilitation - \$4M

Federal, state and MAC funding has been identified by the MAC for most projects in the 2016 CIP.

All projects in the 2016 CIP appear consistent with the Transportation Policy Plan (TPP). All of the 2016 MSP projects were evaluated in the 2020 EA for MSP, that received a Finding of No Significant Impact (FONSI) in March of 2013 from the Federal Aviation Administration. Initial analysis of the future years (2017-2022) of the CIP shows that many projects will meet the dollar threshold of review but do not appear to meet the significant effects criteria. These projects will be re-evaluated on an annual basis. An EAW was prepared for the Hotel Skyway project in 2017, since this project was not included in the 2020 EA. The Terminal 1 parking ramp project is under a planning and development phase. This project will have large expenditures in the future years.

**COMMITTEE COMMENTS AND ACTION:** The Planning committee approved this item and included upcoming changes brought forward by MAC, including adding projects pending environmental review completion. The Technical Advisory Committee approved this item as presented.

---

**ROUTING**

<b>TO</b>	<b>ACTION REQUESTED</b>	<b>DATE COMPLETED</b>
TAC - Planning	Review and Recommend	11/12/2015
Technical Advisory Committee	Review and Recommend	12-2-2015
Transportation Advisory Board	Review and Recommend	
Metropolitan Council	Review and Approve	

## MAC 2016 – 2022 CAPITAL IMPROVEMENT PROGRAM

The MAC 2016 – 2022 Capital Improvement Program material included in this memorandum reflects the actions of the Commission's PD&E Committee on Sep. 14, 2015. Final action by the Commission is expected at their December 21, 2015 meeting. Any changes made on December 7<sup>th</sup> PDE Committee Meeting that may affect the CIP review would be reported at the December 16<sup>th</sup> Transportation Advisory Board.

The overall review schedule for the CIP is listed below. Materials for the TAC - Planning review are included in the following summaries:

- **MAC 2016 CIP Public Review Schedule**  
(See Attachment 1)
  
- **2016 Projects Requiring an Assessment of Environmental Effects (AOEE)**  
(See Attachment 2)  
No projects meet criteria for environmental review.
  
- **Projects Meeting \$5M and \$2M Thresholds 2016-2022**  
(See Attachment 3)  
A number of projects potentially meet the threshold dollar levels.
  
- **Projects Meeting Statutory Review Criteria & Requiring Approval**  
(See Attachment 4)  
A few projects in 2016 meet the dollar threshold levels, but do not meet the criteria requiring project "approval".

1) MAC PUBLIC PARTICIPATION PROCESS:

**MAC - 2016 CAPITAL IMPROVEMENT PROGRAM IMPLEMENTATION SCHEDULE**

CAPITAL IMPROVEMENT PROGRAM	RESPONSIBILITY	SCHEDULE
<b>PROJECTS DEFINITION</b> Initial CIP Discussions ----- Requests for CIP Projects to Airport Development ----- Develop Projects Scopes, Costs, and Prioritization ----- Develop Draft Preliminary CIP -----	MAC Airport Development MAC Departments MAC Dept's & Airport Dev. Airport Development	January 2015 January 1 <sup>st</sup> - June 1 <sup>st</sup> January 1 <sup>st</sup> – May 1 <sup>st</sup> Feb. 1 <sup>st</sup> - July 31 <sup>st</sup> Feb. 1 <sup>st</sup> - July 31 <sup>st</sup>
<b>PROJECTS ENVIRONMENTAL REVIEW</b> Prepare AOEEs and EAWs as required----- Notice of September PD&E Meeting mailed to Affected Municipalities ----- Recommendation by PD&E Committee to Commission of Preliminary CIP for Environmental Review/Authorization to Hold Public Hearing on AOEEs and EAWs ----- Minutes of September PD&E Committee Meeting and Notice of September Commission Meeting mailed to Affected Communities ----- Approval of Preliminary CIP by Commission for Environmental Review/Authorization to Hold Public Hearing on AOEEs and EAWs ----- Preliminary CIP Mailed to Affected Communities ----- AOEEs and EAWs to EQB ----- Public Hearing Notice Published in EQB Monitor, starting the 30-Day Comment Period----- Minutes of September Commission Meeting mailed to Affected Communities ----- Public Hearing on AOEEs and EAWs at November FD&E Committee Meeting ----- Thirty-Day Comment Period on AOEEs and EAWs ends ----- Final Date for Affected Municipalities Comments on Preliminary CIP to MAC ----- Metro Council TAC Planning Review Metro Council – TAC ----- Notice of December PD&E Committee Meeting mailed to Affected Communities ----- Recommendation by PD&E Committee to Commission of Final CIP ----- Minutes of December PD&E Committee Meeting and Notice of December Commission Meeting mailed to Affected Communities ----- Metro Council – TAB Policy Committee & TAB-----	Environment Airport Development  Airport Development Airport Development  Airport Development Airport Development Environment Environment Airport Development Environment Environment Affected Communities TAC-Planning TAC Airport Development Airport Development  Airport Development TAB	July 31 – Oct. 7 <sup>th</sup> August 28 <sup>th</sup>  September 3 <sup>rd</sup> September 11 <sup>th</sup>  September 16 <sup>th</sup> September 17 <sup>th</sup> October 7 <sup>th</sup> October 14 <sup>th</sup> October 22 <sup>nd</sup> November 2 <sup>nd</sup> November 12 <sup>th</sup> November 12 <sup>th</sup> November 12 <sup>th</sup> December 2 <sup>nd</sup> November 28 <sup>th</sup> December 7 <sup>th</sup>  December 11 <sup>th</sup> December 16 <sup>th</sup>

PROJECTS PLANNING and FINANCIAL REVIEW		
Approval of Final CIP by Commission-----	Airport Development	December 21 <sup>st</sup>
Notification of Commission action to EQB-----	Airport Development	December 21 <sup>st</sup>
CIP Distributed to MAC Departments, Met Council, State Historical Society and Affected Municipalities -----	Airport Development	December 21 <sup>st</sup>
Metro Council – Committee Action-----	Transportation Committee	January 4 <sup>th</sup>
Metro Council – Council Action-----	Metro Council	January 18 <sup>th</sup>
Minutes of December Commission Meeting mailed to Affected Communities -----	Airport Development	January 22 <sup>nd</sup> , 2016

**Note:** 1) All dates are tentative and subject to change. 2) Shaded items represent actions/dates which pertain to the Affected Communities as defined in Minnesota Statutes § 473.621, Subd. 6, as amended. 3) MAC = Metropolitan Airports Commission 4) PD&E = MAC Planning, Development and Environment Committee 5) AOEE = Assessment Of Environmental Effects 6) EAW = Environmental Assessment Work Sheet 7) EQB = [MN] Environmental Quality Board

2) PROJECTS REQUIRING AN ASSESSMENT OF ENVIRONMENTAL EFFECTS (AOEE's):

Project Description	Are the Effects of the project Addressed in an Approved EAW, EA or EIS?	Environmental Categories Affected by the Project													
		Air Quality	Compatible Land Use	Fish Wild-life and Plants	Flood-plains and Flood-ways	Hazardous Materials, Pollution Prevention and Solid Waste	Historical, Architectural, Archaeological and Cultural Resources	Light Emissions and Visual Effects	Parks & Rec. Areas and Trails	Noise	Water Quality (Storm, Waste and Ground Water)	Wet lands	Infra-structure and Public Services	Farm land	Erosion and Sedimentation
<b>MSP AIRPORT PROJECTS</b>															
No EA or EIS Required for 2016 projects	MSP 2020 Environmental Assessment findings.	No Effects													
<b>RELIEVER PROJECTS</b>															
No Projects	N/A	N/A	N/A	N/A	N/A	N/A	N/A	N/A	N/A	N/A	N/A	N/A	N/A	N/A	N/A

**3) MAC PROJECTS ANTICIPATED TO MEET THE \$5M AND \$2M THRESHOLDS FROM 2016 – 2022:**

Airport	2016	2017	2018	2019	2020	2021	2022
<b>MSP Environmental</b>	Noise Mitigation	Noise Mitigation	Noise Mitigation				
<b>MSP Terminal 1 Lindbergh</b>	-Mezzanine HVAC/AHU Replacements – \$16.7M  -Vertical Circulation Improvements - \$34.2 M  -Terminal 1, Parking Ramp, Northwest Grade Separation - \$15.5 M  -Terminal 1, Parking Ramp, Cargo and Stores Building - \$10.5 M  -Terminal 1, Parking Ramp, Roadway and Plaza Relocation - \$100 M  -Terminal 1, Parking Ramp, Parking Structure and RAC Facility - \$24 M	-Baggage Claim Expansion - \$33.4 M  -Outbound Baggage System -\$15.2M  -Ticket Lobby Operational Improvements - \$15.7 M  -Concourse A/G Connector Bridge Phase 1 - \$20 M  -Parking, Orange Ramp Additional Elevators - \$293 M  -Concourse G Rehabilitation - \$6.5M  -Freight Building Remodel for DHL - \$5M	-Recarpeting Program -\$6.83M  -Taxiway D Reconstruction - \$9.5M  -Ticket Lobby Operational Improvements - \$20M  -Vertical Circulation Improvements - \$25.2 M  -Lower Level Curbside Expansion - \$12.1M  -Concourse G Rehabilitation -\$5M	-Recarpeting Program - \$6.83M  -ARFF #2 Facility - \$10.5M  -FIS Operational Improvements -\$8.4M  -Baggage Claim Expansion - \$23.7 M  -Ticket Lobby Operational Improvements - \$19.4M  -East Curbside Upper Level Check-In- \$14,8M  -Taxiway C Construction -\$5.5M  -Folded Plate Repairs - \$8.9M  -Police, Safety and Ops Center -\$35M*	-Recarpeting Program - \$6.83M  -Baggage Claim Expansion - \$41.4 M  -Ticket Lobby Operational Improvements - \$16.5M  --Folded Plate Repairs -\$8.9M  -Concourse G Rehabilitation \$5M	-Checkpoint Expansion -\$10.5M  -Replacement of Jet Bridges \$5M  -CBP Primary Relocation Gates G8-9-\$51M  --Folded Plate Repairs - \$8.9M  -Concourse G Rehabilitation \$5M	-Checkpoint Expansion -\$25.1M  -Concourse E Remodeling - \$41.5M  --Folded Plate Repairs - \$8.9M  -Concourse G Rehabilitation \$5M
<b>MSP Airfield</b>							
<b>MSP Terminal 2 Humphrey</b>				- Public Safety Facility- \$35M – this is not a T2 project. It is considered to be under the Police cost center.			-T2 North Gate Expansion Design Fees- \$5M

<b>Lake Elmo Airport</b>		Runway 04/22 Pavement Rehabilitation - \$4M		Runway 14/32 Replacement- \$7M  Airfield Modifications - \$3M			
<b>Airlake Airport</b>				South Building Area Development Phase 1- \$3.2M			Runway 12/30 Reconstruction \$ 3.5M  Runway 12/30 Extension - \$8M
<b>Flying Cloud Airport</b>	Taxiway D Pavement Rehabilitation - \$1M	Equipment Storage Building - \$2.5M	Electrical Vault Modifications - \$1.5M			Runway 10R/28L Pavement Rehabilitation - \$1.3M	Runway 10L/28R Overlay Pavement Rehabilitation - \$2M
<b>Anoka County-Blaine Airport</b>			South Service Road and East Landside Road Pavement Reconstruction - \$1M			Building Area Development & Xylite Relocation – \$1M	Building Area Development – 2.4M
<b>St. Paul Downtown Airport</b>	St. Paul Runway 14/32 Pavement Rehabilitation - \$4M	Storm Sewer Improvements - \$1.5M		MAC Building Improvements - \$2M  St. Paul Runway 13/31 Safety Area Improvement - \$4.5M	LED Lighting Upgrades - \$1.5M	Runway 14/32 Reconstruction - \$5M	Runway 14/32 Reconstruction - \$5M  Admin Building Apron Pavement Rehabilitation - \$1.4M
<b>Crystal Airport</b>			Runway 14R/32L & Taxiway E Modifications - \$2M				



4) 2016 PROJECTS MEETING STATUTORY REVIEW CRITERIA AND REQUIRING APPROVAL:

2016 CIP PROJECTS	Prior Reviews/Actions		Capital				Review		Criteria *	
	LTCP	AOEE***	(A)	(B)	(C)	(D)	(E)	(F)	(G)	(H)**
AIRPORT / PROJECT	<ul style="list-style-type: none"> <li>Review Action</li> </ul>	<ul style="list-style-type: none"> <li>EA-EAW Prepared</li> <li>EIS Reviewed</li> <li>NPDES Approved</li> <li>Legislative Requirement</li> <li>Regulatory Requirement</li> <li>Legal Requirement</li> </ul>	Project meets Dollar threshold at:  MSP = \$5M Relievers = \$2M	Loc. of a New Airport	New Runway at an Existing Airport	A Runway Extension at an Existing Airport	Runway Strengthening other than routine Maintenance.	New or Expanded Passenger Handling or Parking Facilities for 25% or more capacity Increase.	Land Acquisition associated with the other criteria, or that would cause relocation of residential or business Activities.	Project information made available by the MAC to affected cities for review.
<b>MSP International Airport 2015 Program:</b>	<ul style="list-style-type: none"> <li>2030 LTCP Update Approved in 2010</li> </ul>	.								

<i>ST. PAUL DOWNTOWN</i>	<ul style="list-style-type: none"> <li>• 2025 LTCP Approved in 2010</li> </ul>		None							
<i>FLYING CLOUD</i>	<ul style="list-style-type: none"> <li>• 2025 LTCP Approved in 2010</li> </ul>	MAC-City Agreement concluded; FAA review of Agreement & R.O.D. on FEIS completed as part of MAC/Airline Agreement. 2010 Plan being implemented.	None							
<i>CRYSTAL</i>	<ul style="list-style-type: none"> <li>• 2025 LTCP Approved 2008</li> </ul>		None							
<i>ANOKA CO. -BLAINE</i>	<ul style="list-style-type: none"> <li>• 2025 LTCP Approved in 2010</li> </ul>		None							
<i>LAKE ELMO</i>	<ul style="list-style-type: none"> <li>• 2025 LTCP Approved 2008</li> </ul>	(EA completed for proposed new East Building Area).	None							Y
<i>AIRLAKE</i>	<ul style="list-style-type: none"> <li>• 2025 LTCP Approved 2008</li> </ul>	(negotiations on sewer & water service).	None							Y

\* Criteria as defined under MS 473.

\*\* Requirements defined under MS 473.

\*\*\* Per AOEE 2016-2022 Summary Environmental Assessment

# 7-Year Capital Improvement Program



Met Council TAB Meeting - December 16, 2015



# CIP Year 2016

MSP Long Term Comp Plan Projects = **CUSTOMER SERVICE for ORIGINATING PASSENGERS** \$204,200,000

MSP End of Life Replacement Projects \$33,850,000

MSP Maintenance/Facility Upgrade Projects \$22,300,000

MSP On-Going Maintenance Programs \$20,325,000

MSP IT Projects \$17,250,000

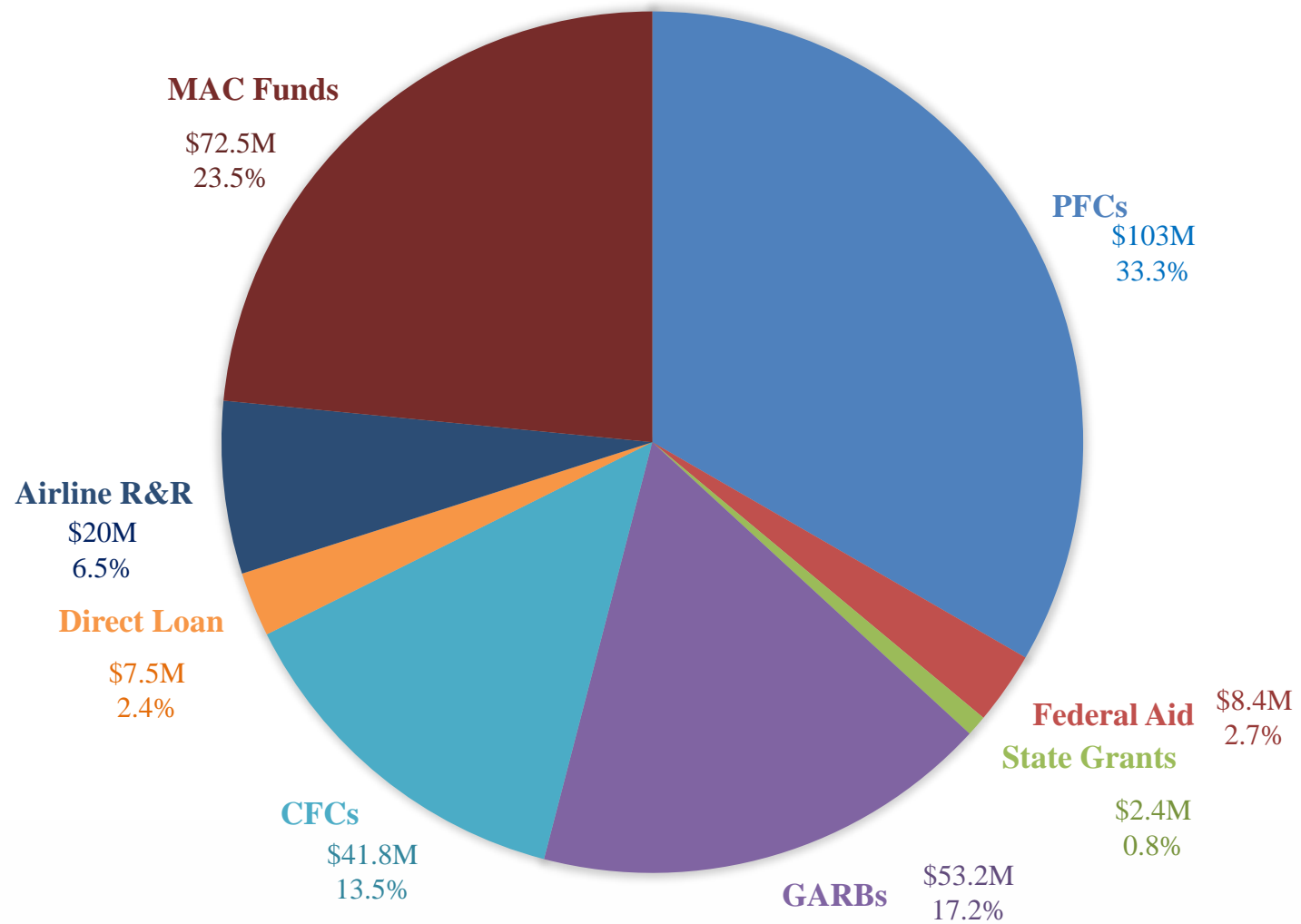
Reliever Mx/Facility Upgrade Projects \$7,900,000

MSP Tenant Projects \$3,200,000

Year 2016 CIP Total  
**\$309,025,000**



# CIP Year 2016 Funding Sources





# 2016 Key Projects

Passenger Boarding Bridge Replacements

Mezzanine HVAC/AHU Replacements

Restroom Upgrades – Main Mall

T2 Lobby Restrooms

Concessions Rebids

DHL Freight Building Remodel/Expansion (shown as a 2017 project until Environmental review is complete)

Construction begins on the T1 Operational Improvements

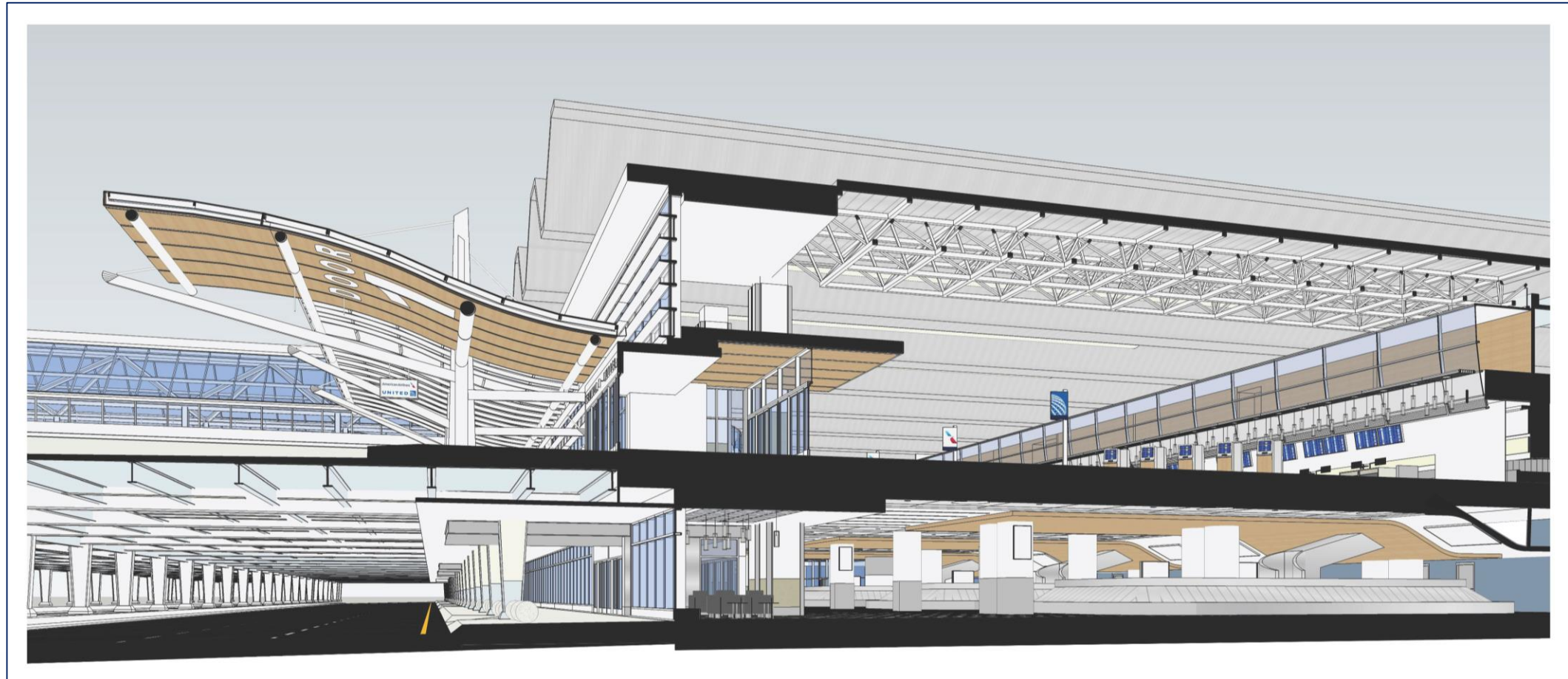
Construction begins on the T1 Outbound Roadway Modifications and Associated Parking Program Elements

Construction begins on the MSP Hotel and Concourse A-G Connector Skyway



# T1 Operational Improvements – Vertical Circulation

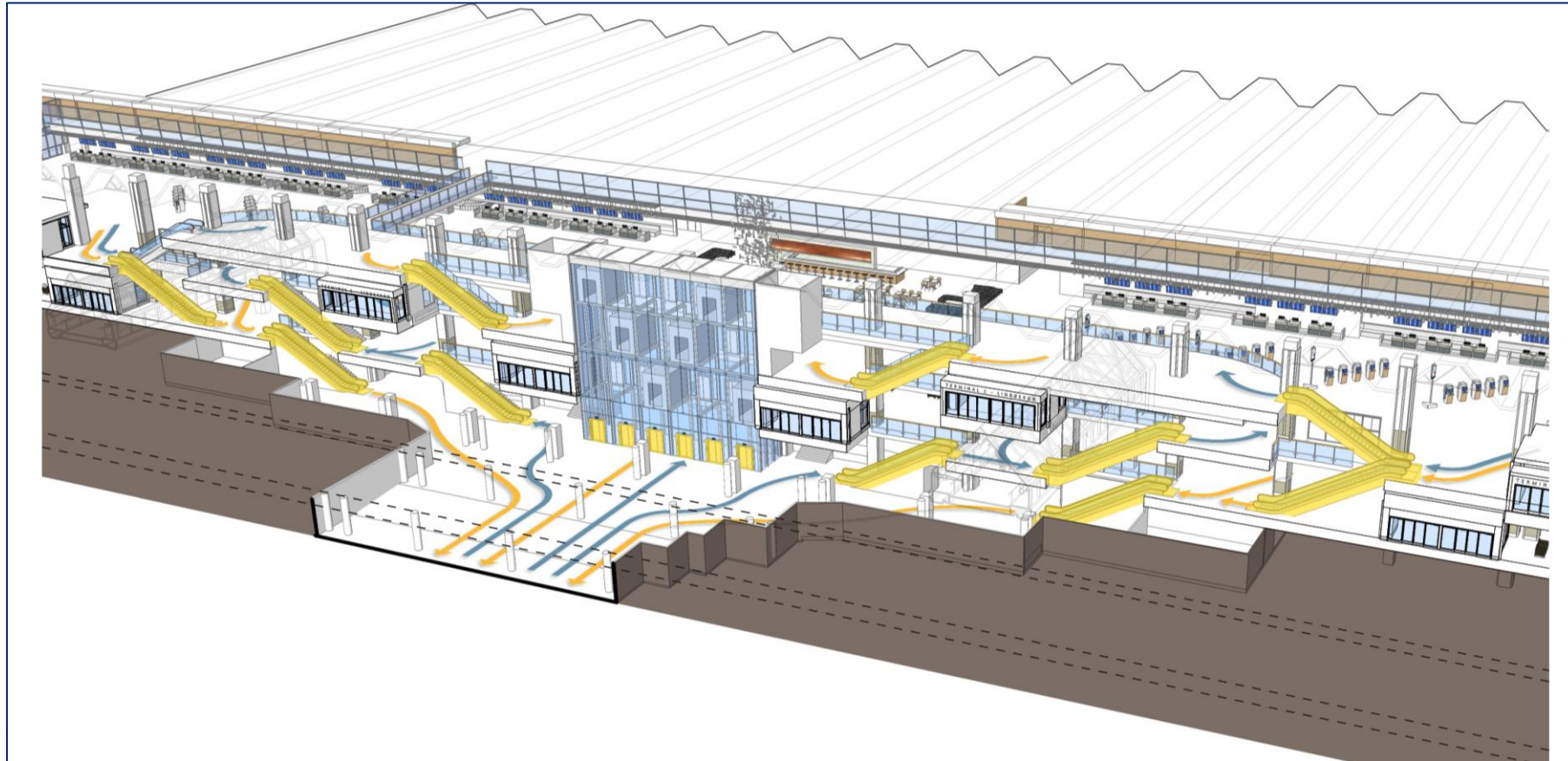
Sample Renderings Dec. 2015





# T1 Operational Improvements – Vertical Circulation

Sample Renderings Dec. 2015





# T1 Operational Improvements – Future Phases

Sample Renderings Dec. 2015

## Check-In / Ticket Lobby



# T1 Operational Improvements – Future Phases

Sample Renderings Dec. 2015

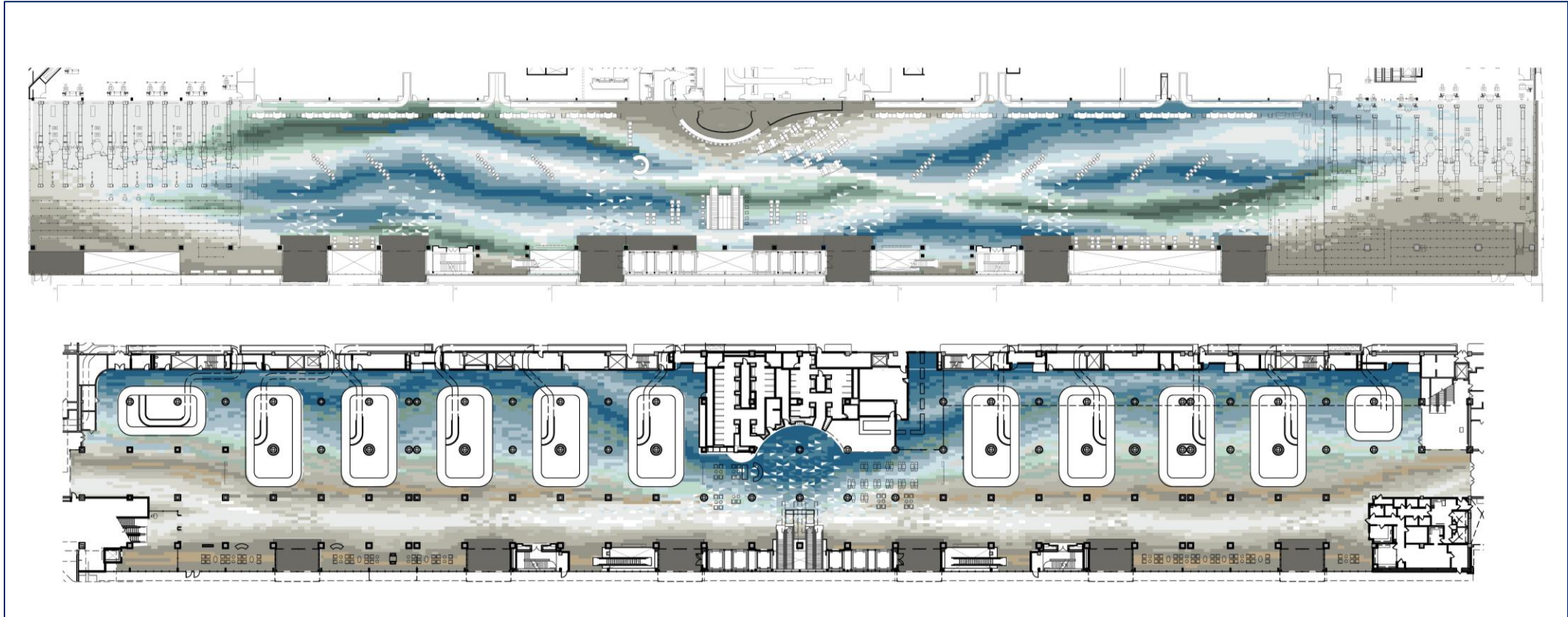
## Baggage Claim Level





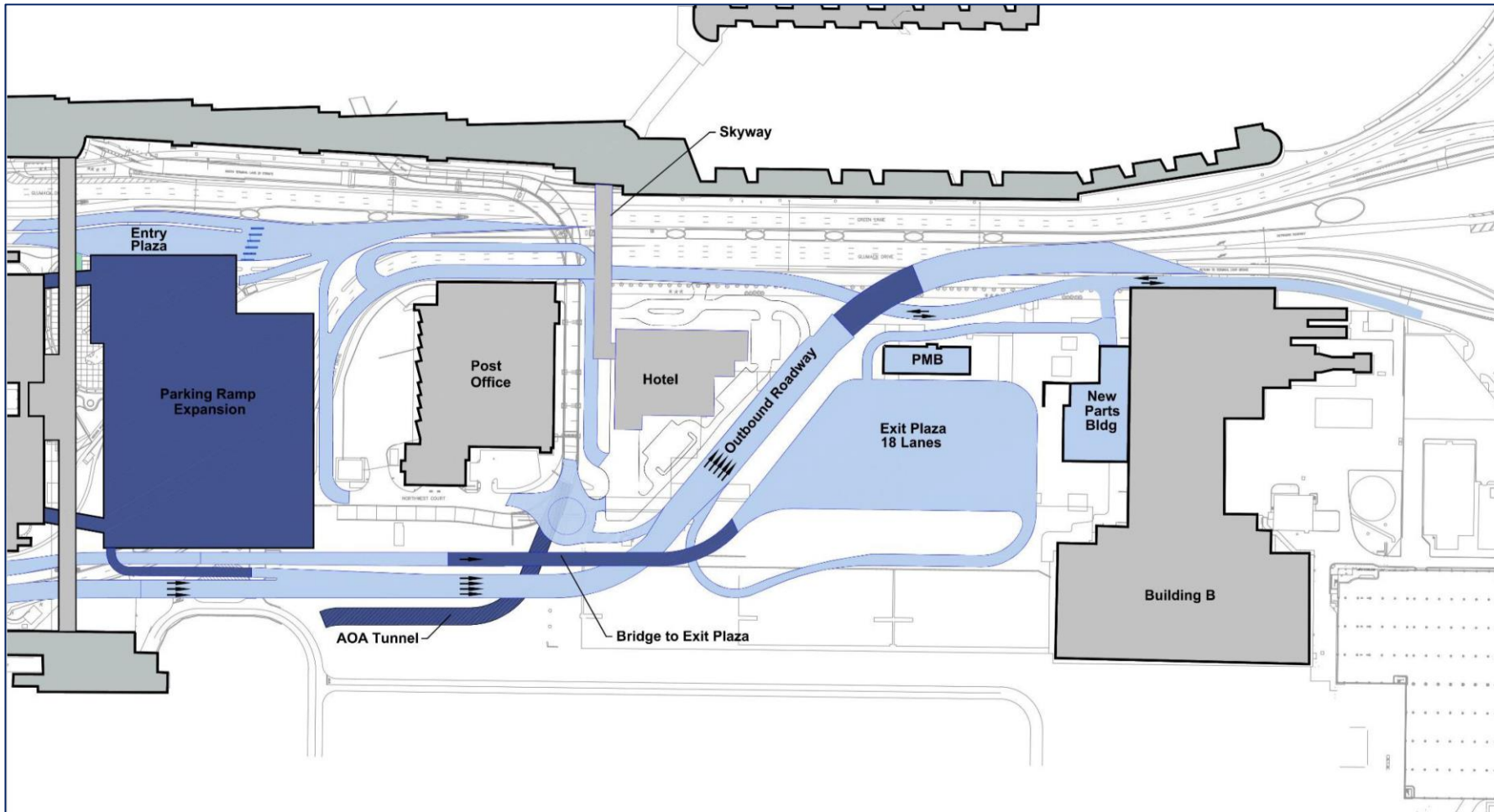
# T1 Operational Improvements – Terrazzo Layouts

Sample Renderings Dec. 2015



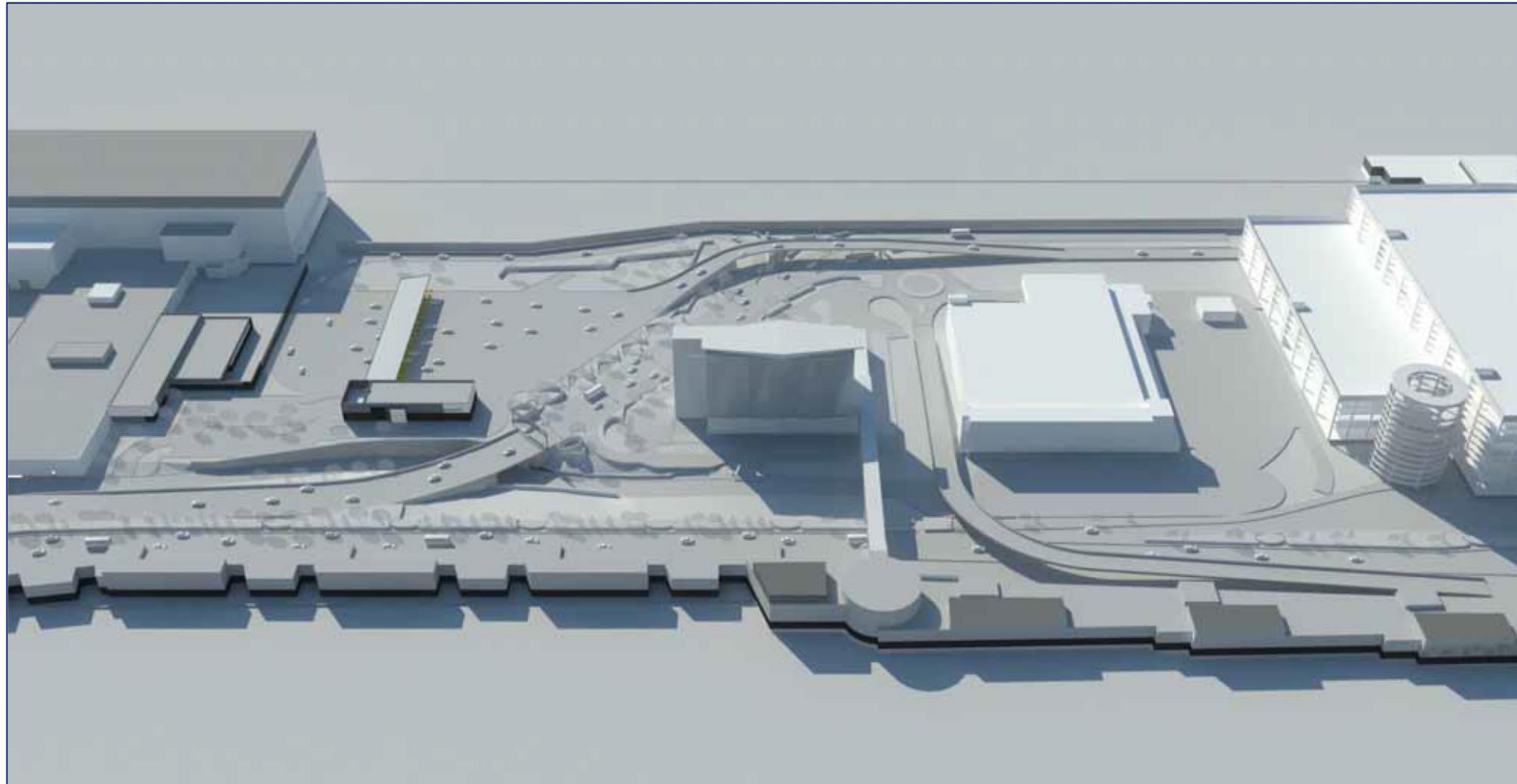
# T1 Roadway Improvements and Parking Expansion

Sample Renderings Dec. 2015



# T1 Roadway Improvements and Parking Expansion

Sample Renderings Dec. 2015



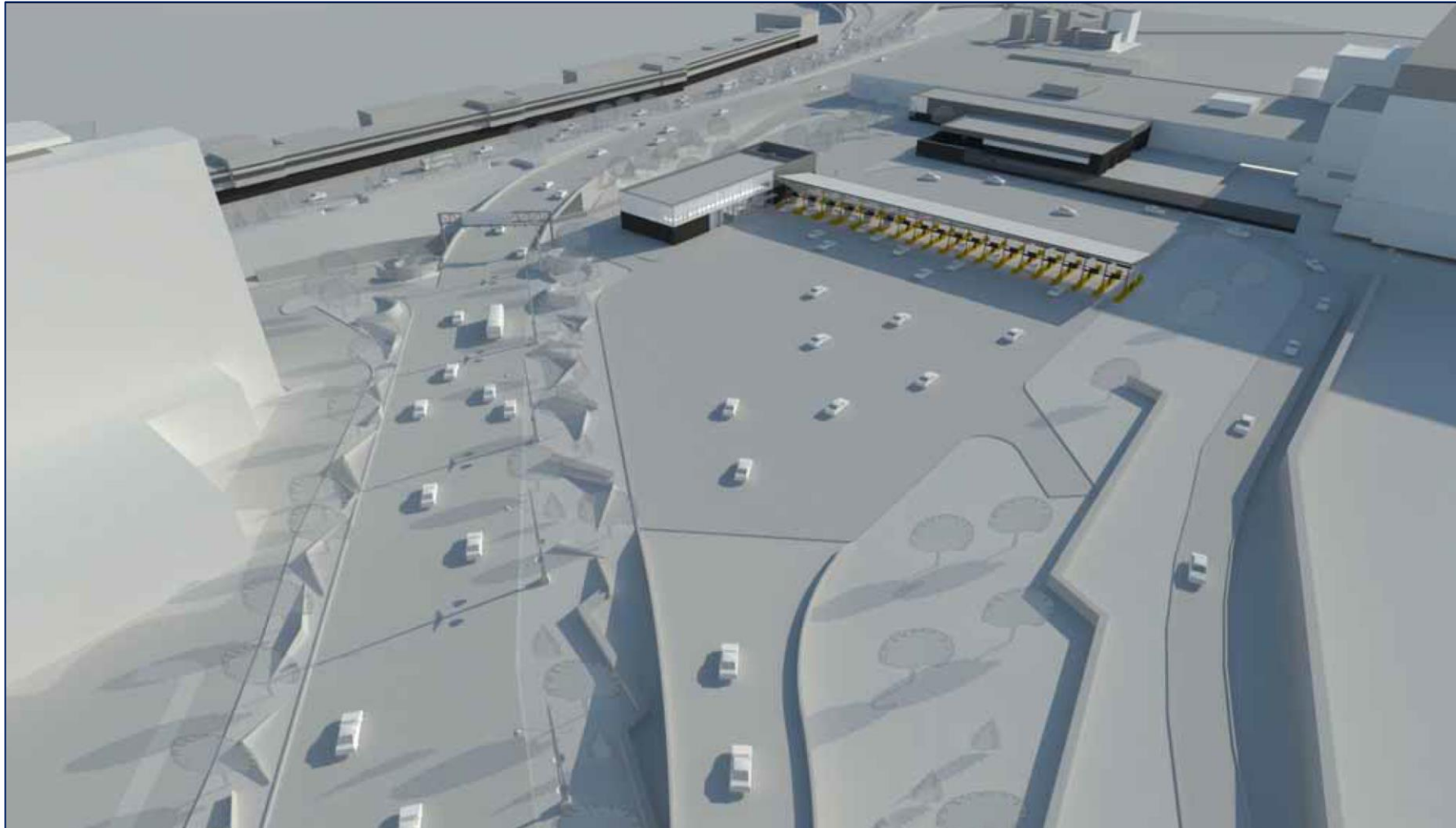
\* Parking ramp helix shown is not currently in the proposed construction plan.





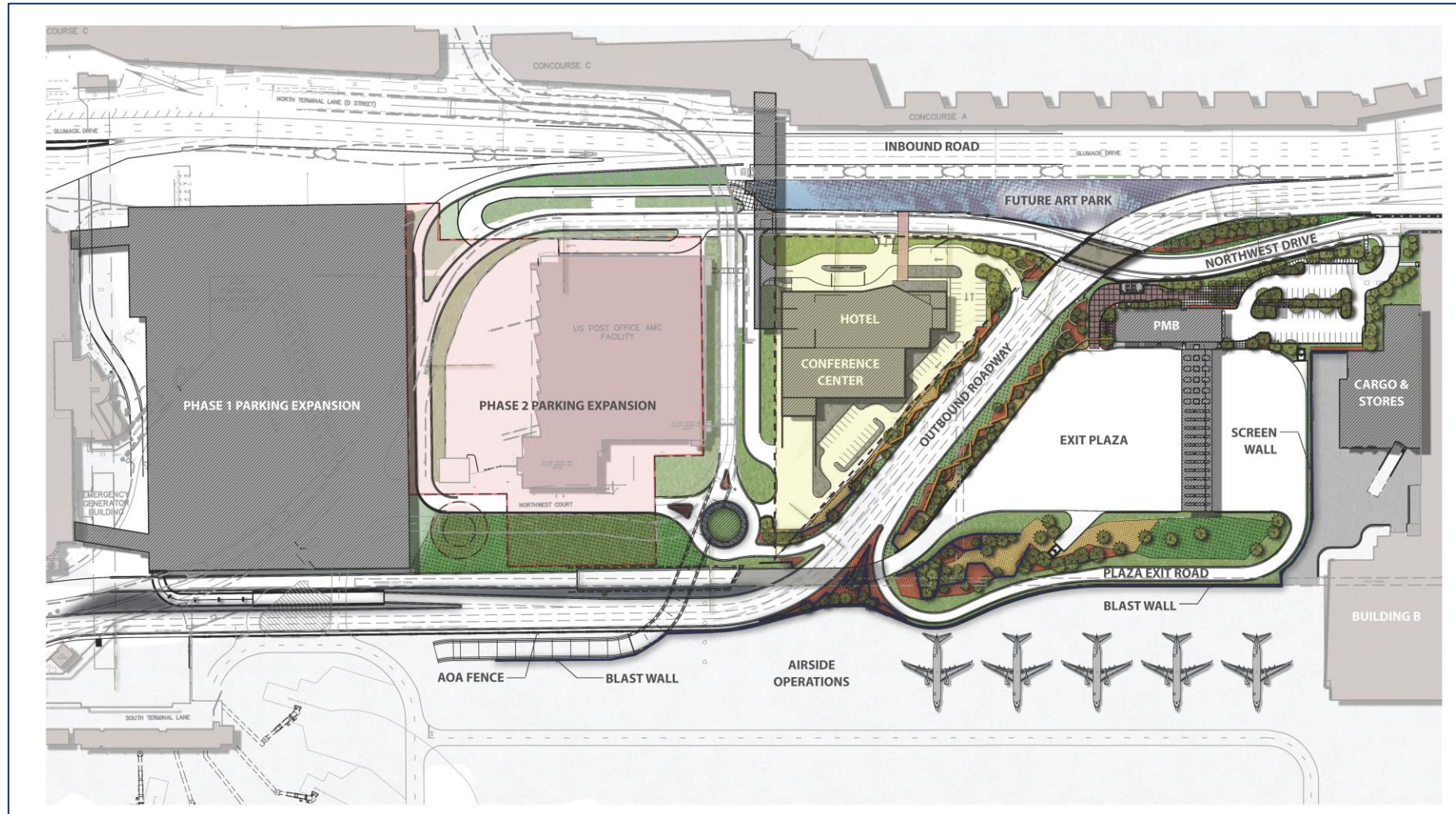
# T1 Roadway Improvements and Parking Expansion

Sample Renderings Dec. 2015



# T1 Roadway Improvements and Parking Expansion

Sample Renderings Dec. 2015





# T1 Roadway Improvements and Parking Expansion

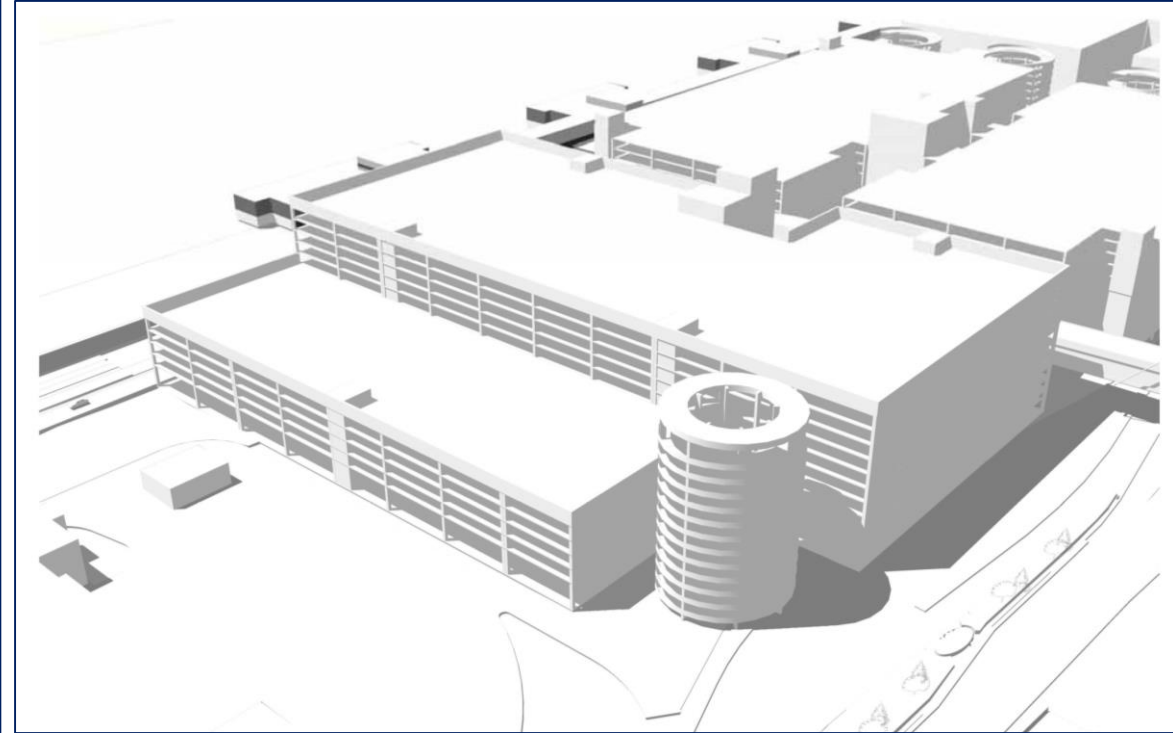
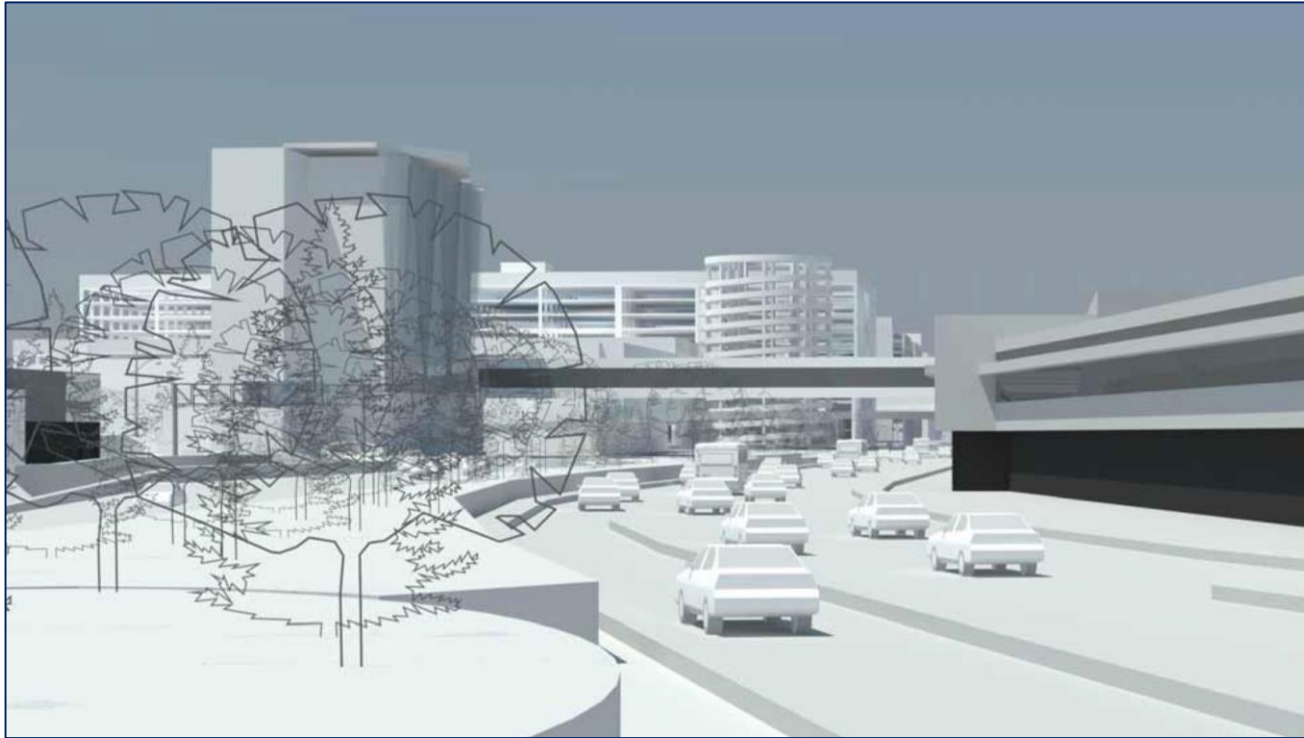
Sample Renderings Dec. 2015





# T1 Roadway Improvements and Parking Expansion

Sample Renderings Dec. 2015



\* Parking ramp helix shown is not currently in the proposed construction plan.



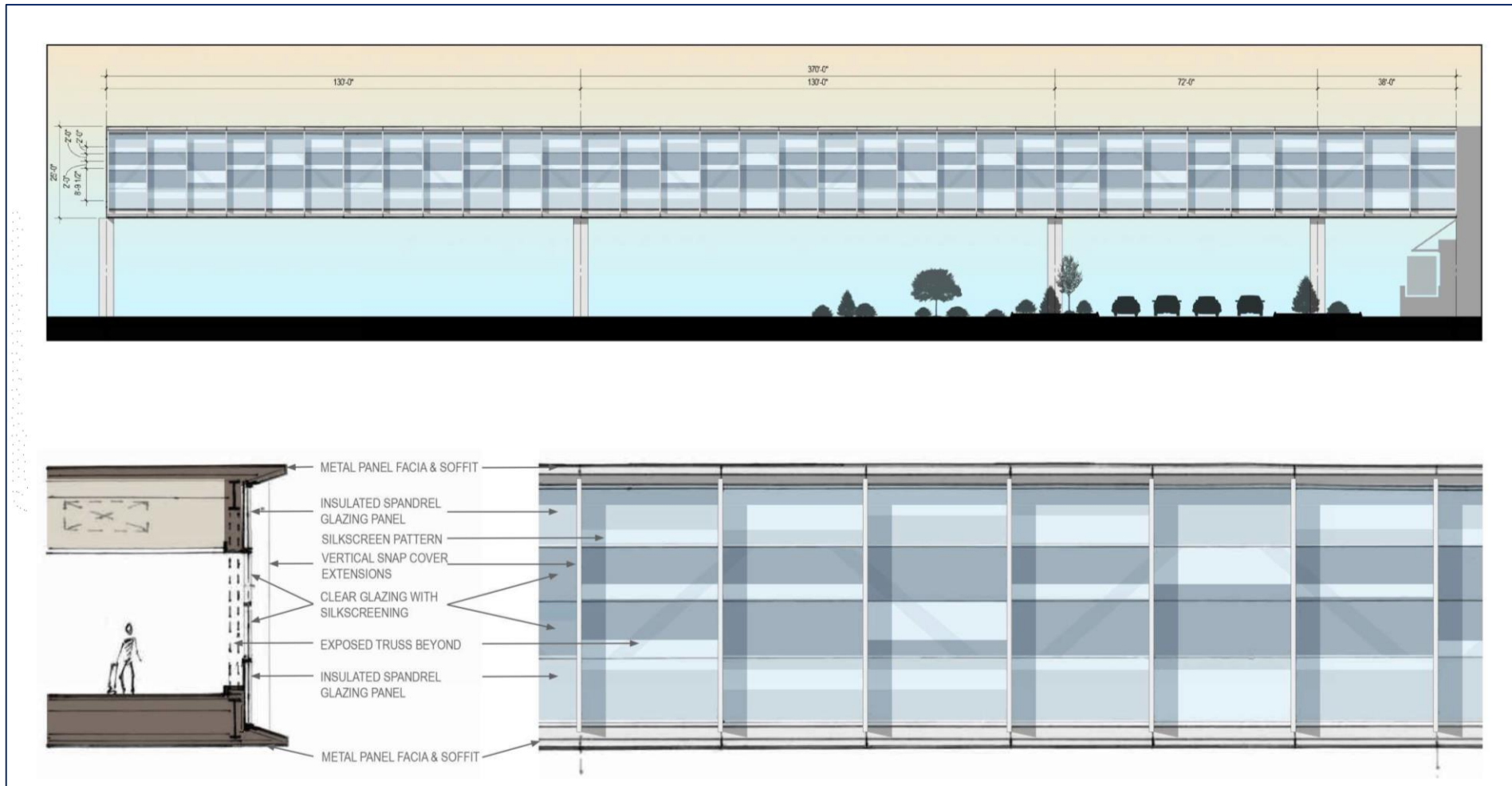
# Concourse A-G Connector (a.k.a Hotel Skyway)

Sample Renderings Dec. 2015



# Concourse A-G Connector (a.k.a Hotel Skyway)

Sample Renderings Dec. 2015





# Questions?



Thank you

