



# **TRANSPORTATION** **POLICY PLAN**

## 2016 Transportation System Performance Evaluation

Transportation Advisory Board

May 17, 2017

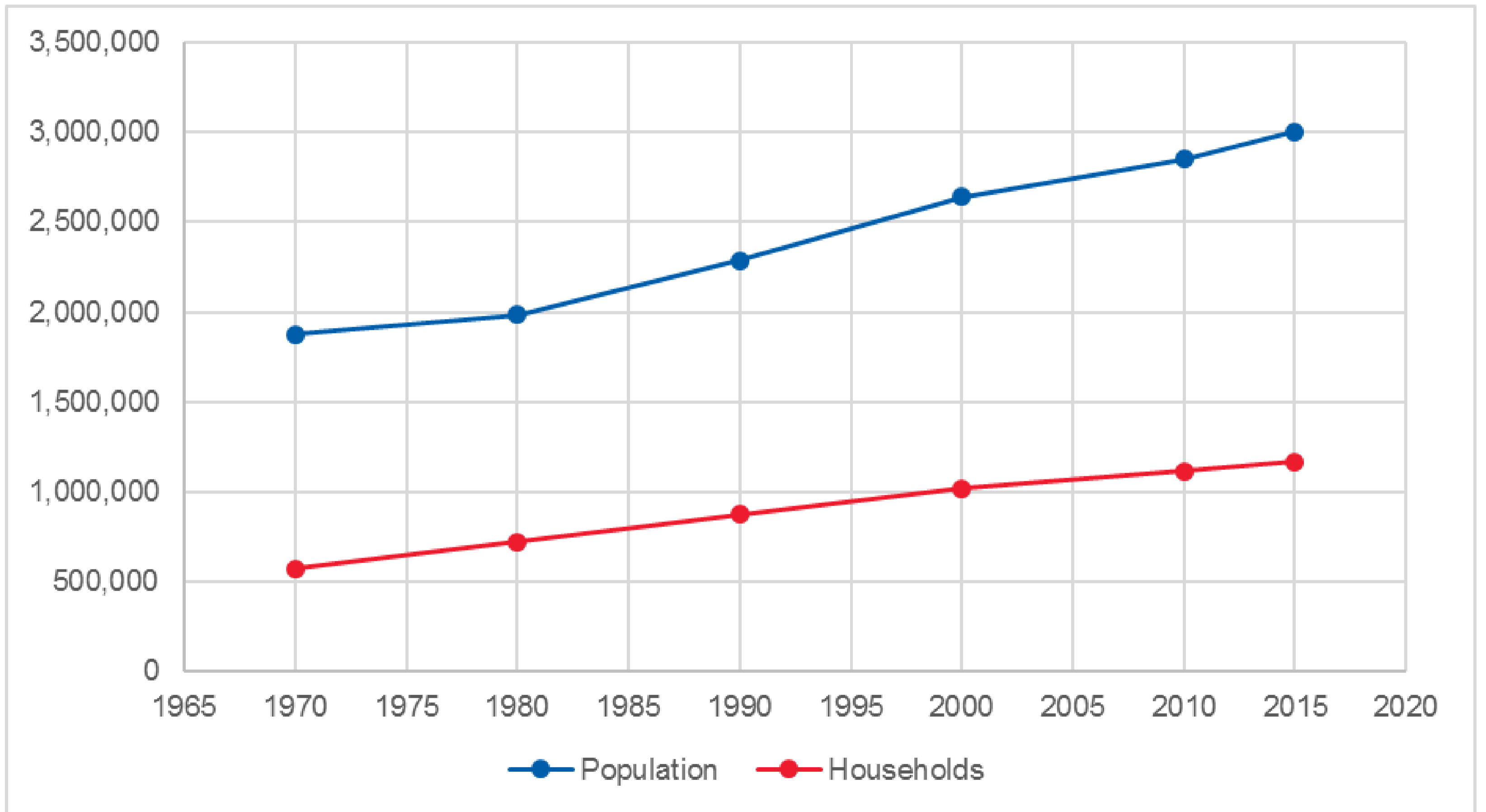
# Overview

- Comprehensive review of the regional transportation system performance
  - Demographics
  - Highway
  - Aviation
  - Bicycle and Pedestrian
  - Transit
  - Freight
- Prepared to inform the 2018 update of the ***Transportation Policy Plan***
- Incorporates performance measures relevant to ***2040 TPP*** goals and ***Thrive MSP 2040*** outcomes

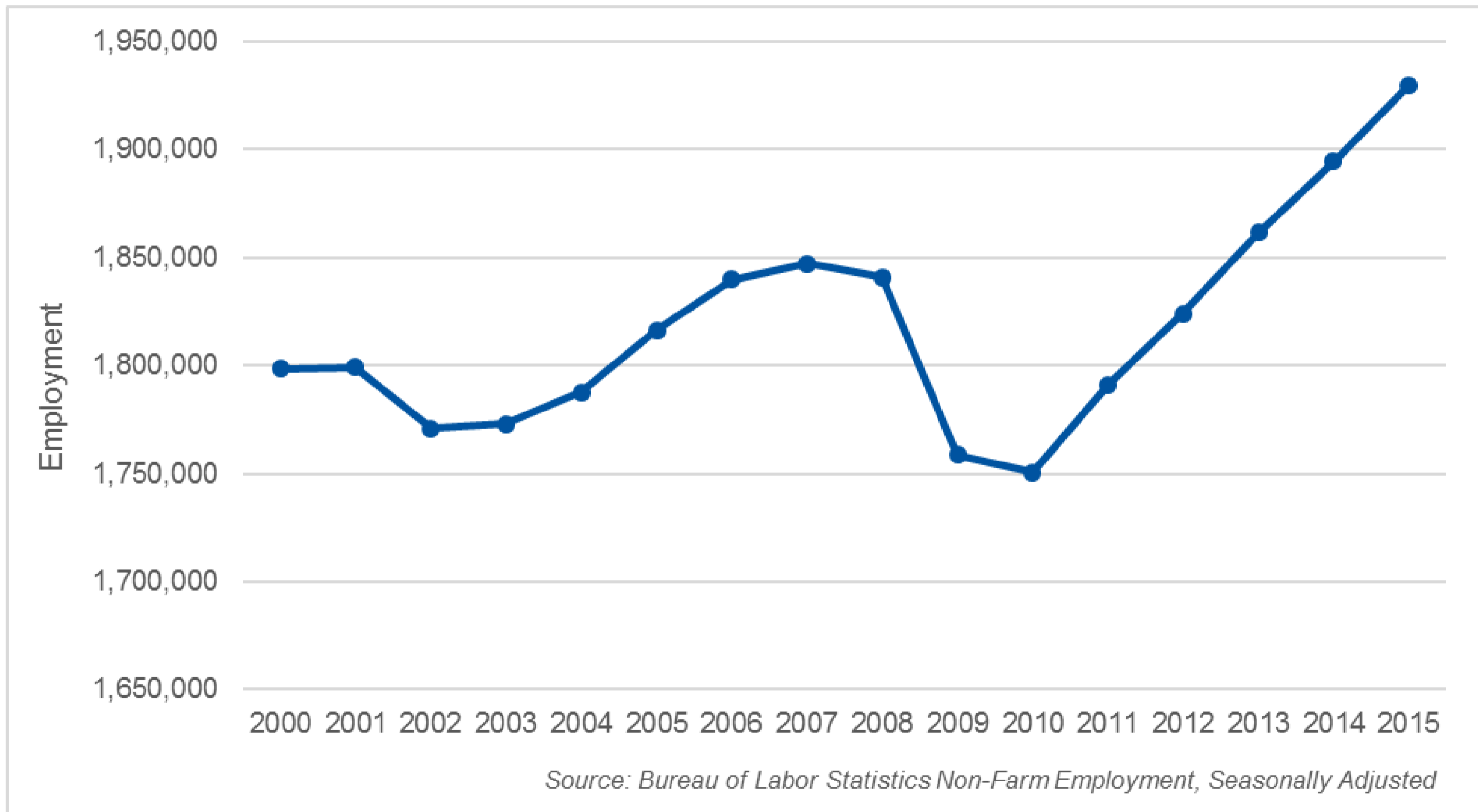
# Legislative Requirement

- Before each TPP update, the TSPE is required to:
  - Evaluate transportation system's ability to effectively and efficiently transport goods and people
  - Evaluate trends and impacts
  - Assess success in meeting regional transportation benchmarks
  - Compare transit system performance to peer regions

# Demographics: Pop. & Households



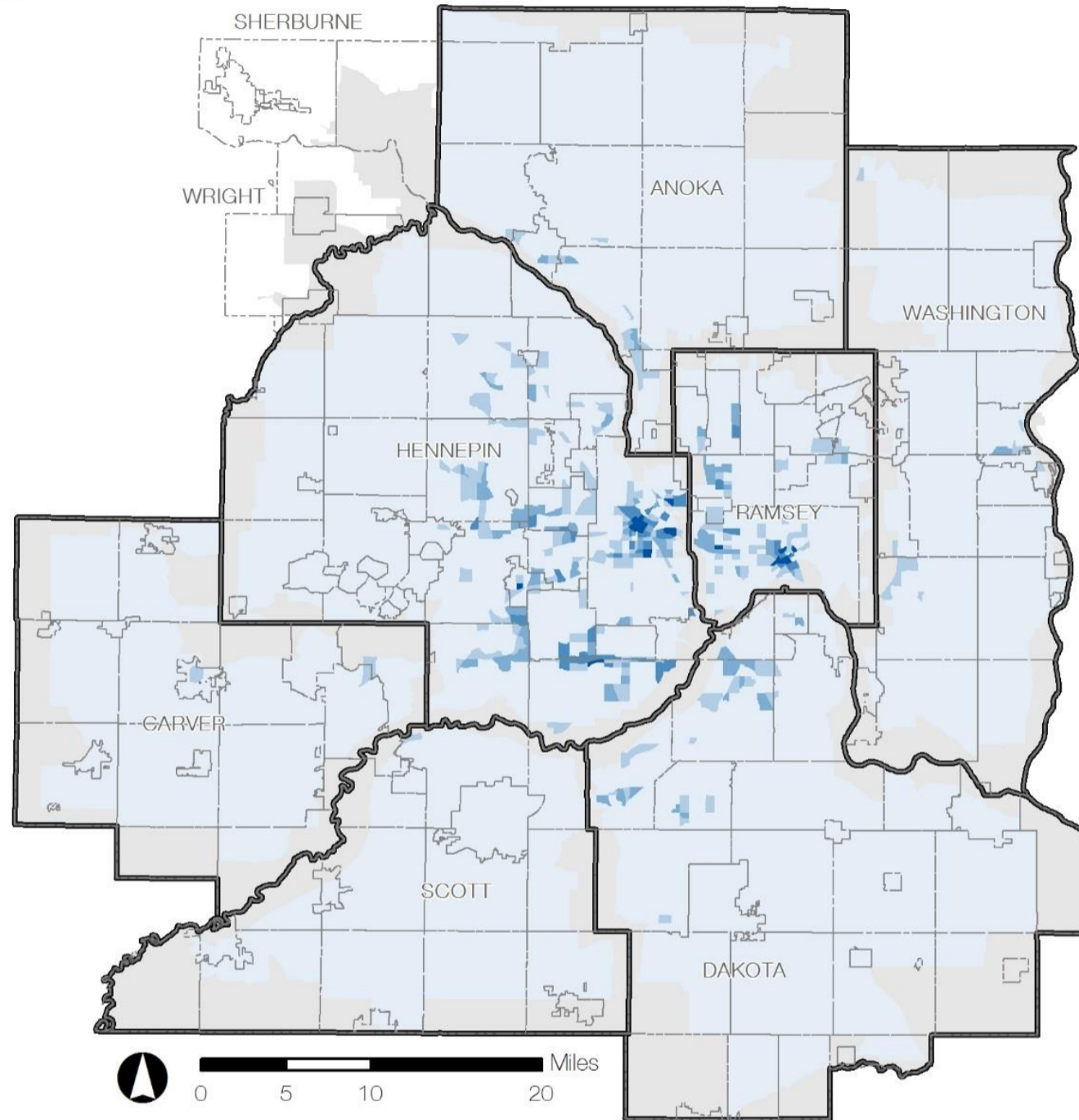
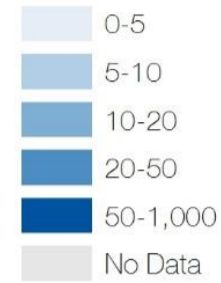
# Demographics: Jobs





# Demographics: Jobs & Pop. Location

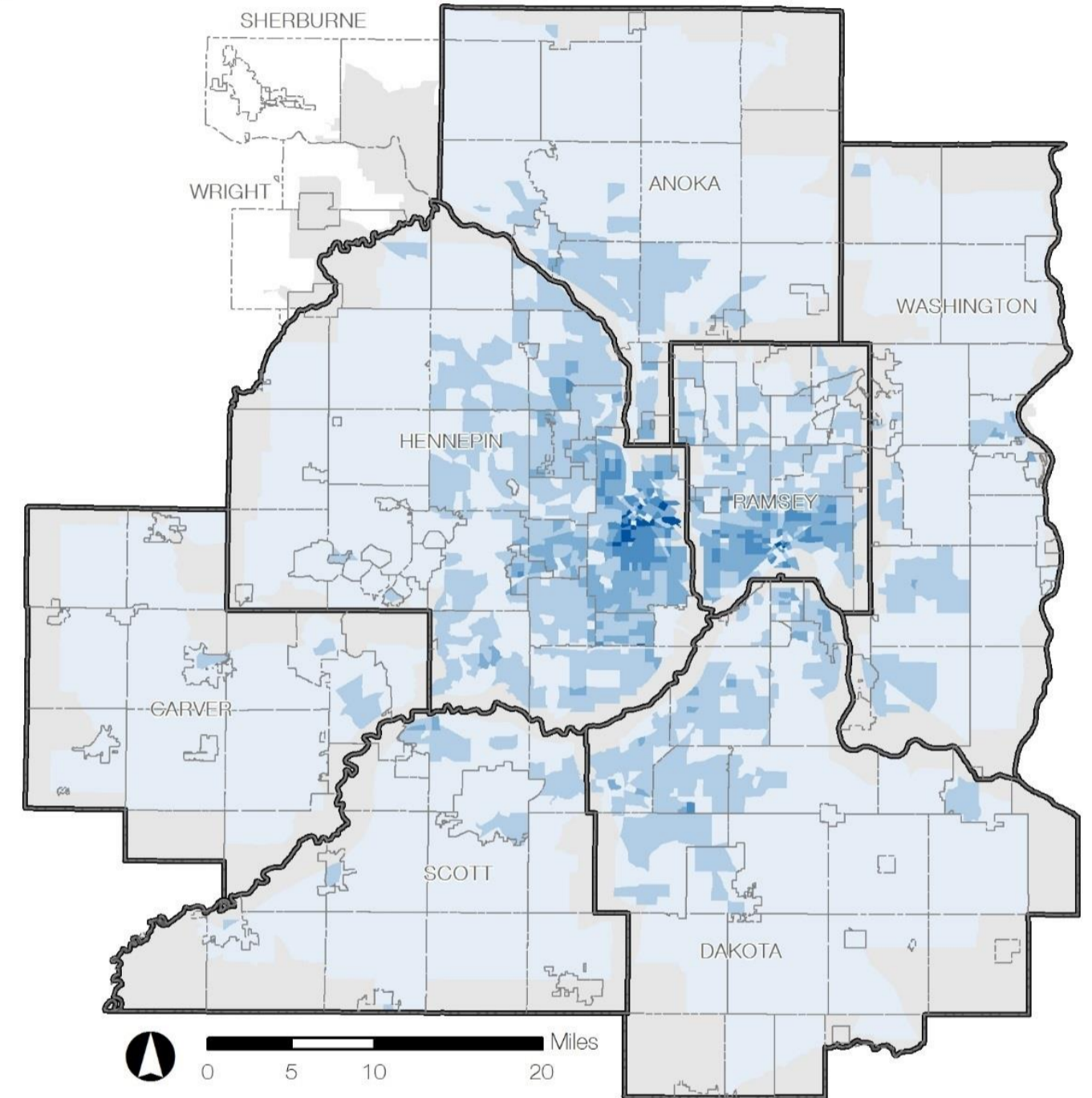
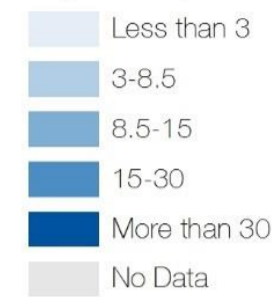
Employment per Acre



Source: 2014 Transportation Analysis Zone (TAZ) Data

February 2017

Population per Acre



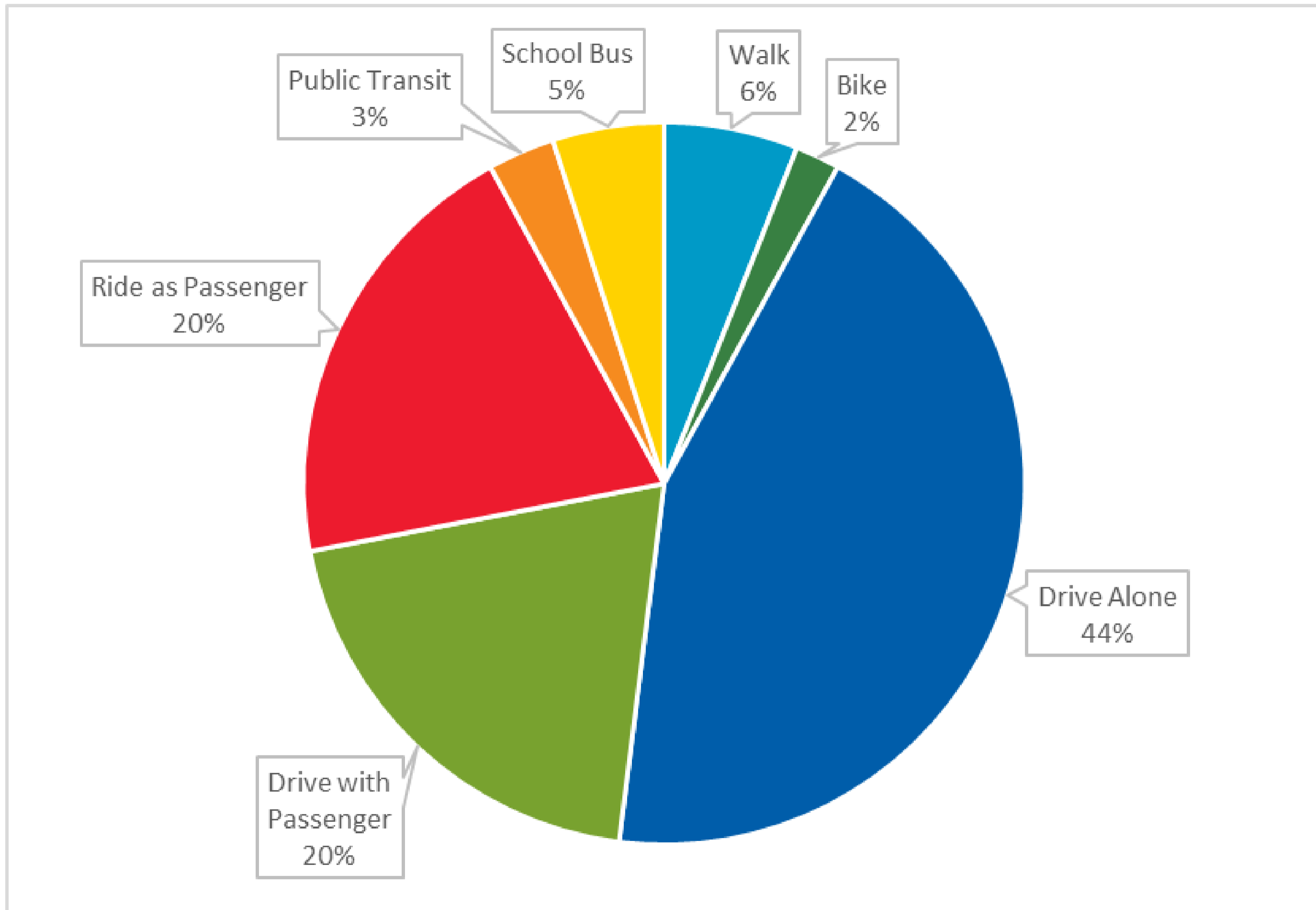
Source: 2014 Transportation Analysis Zone (TAZ) Data

February 2017

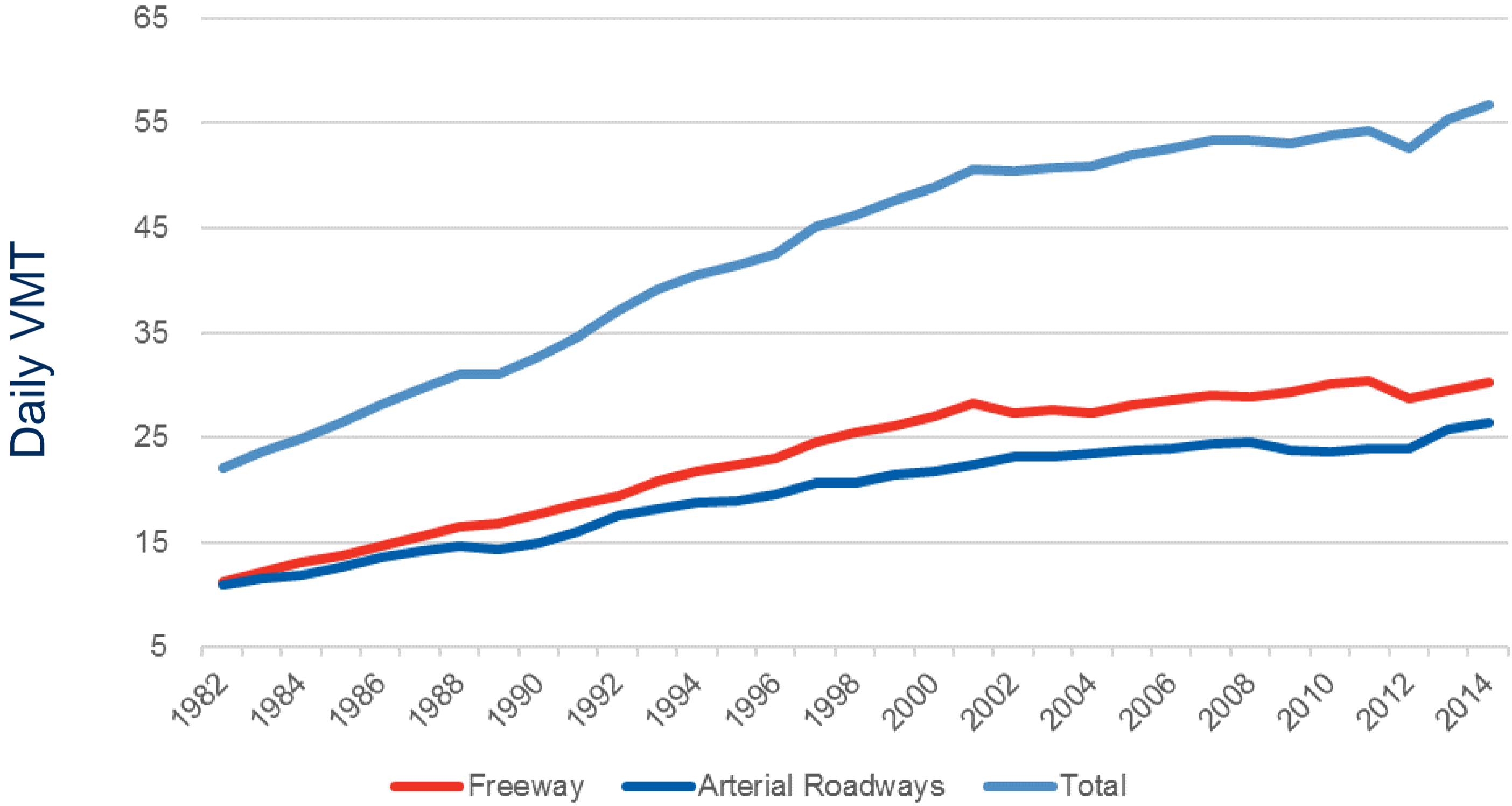
- Employment / Acre

Population/Acre

# Travel: Mode Use

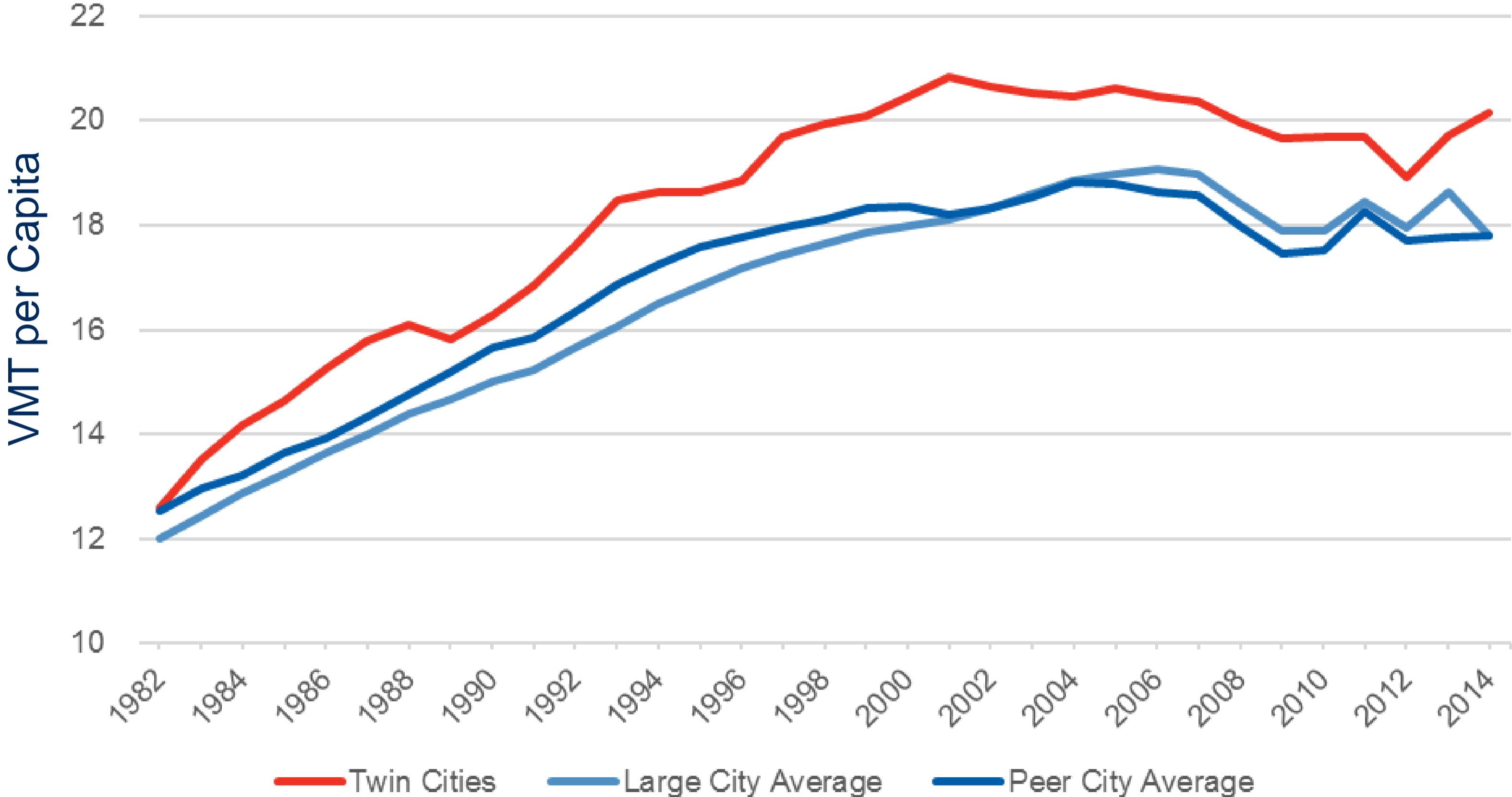


# Vehicle Miles Traveled (VMT)

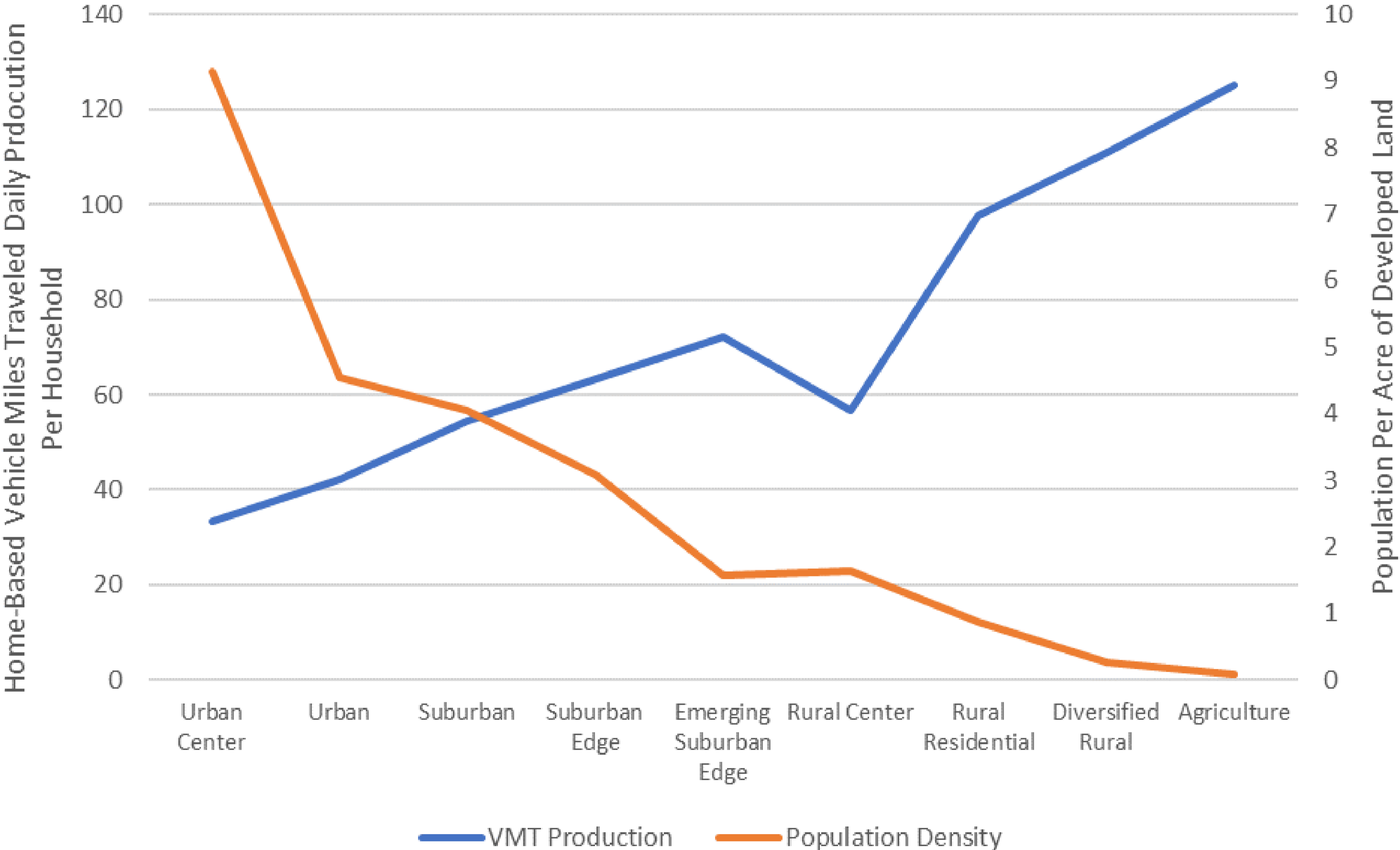




# VMT per Capita

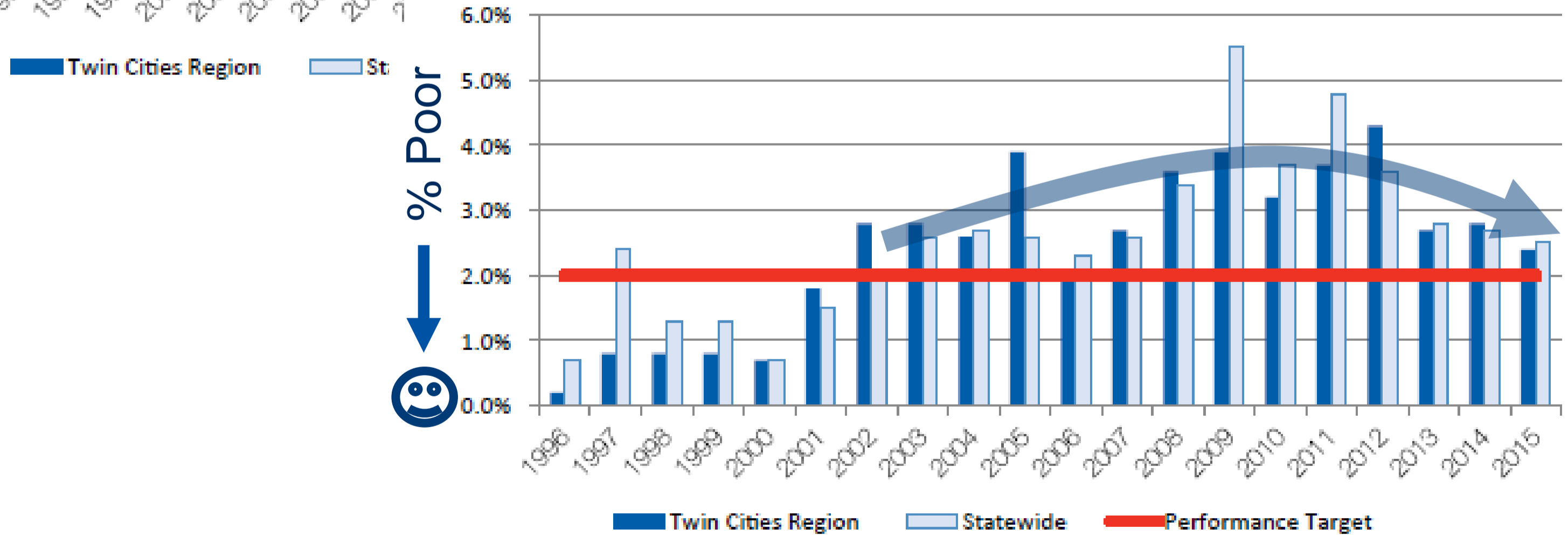
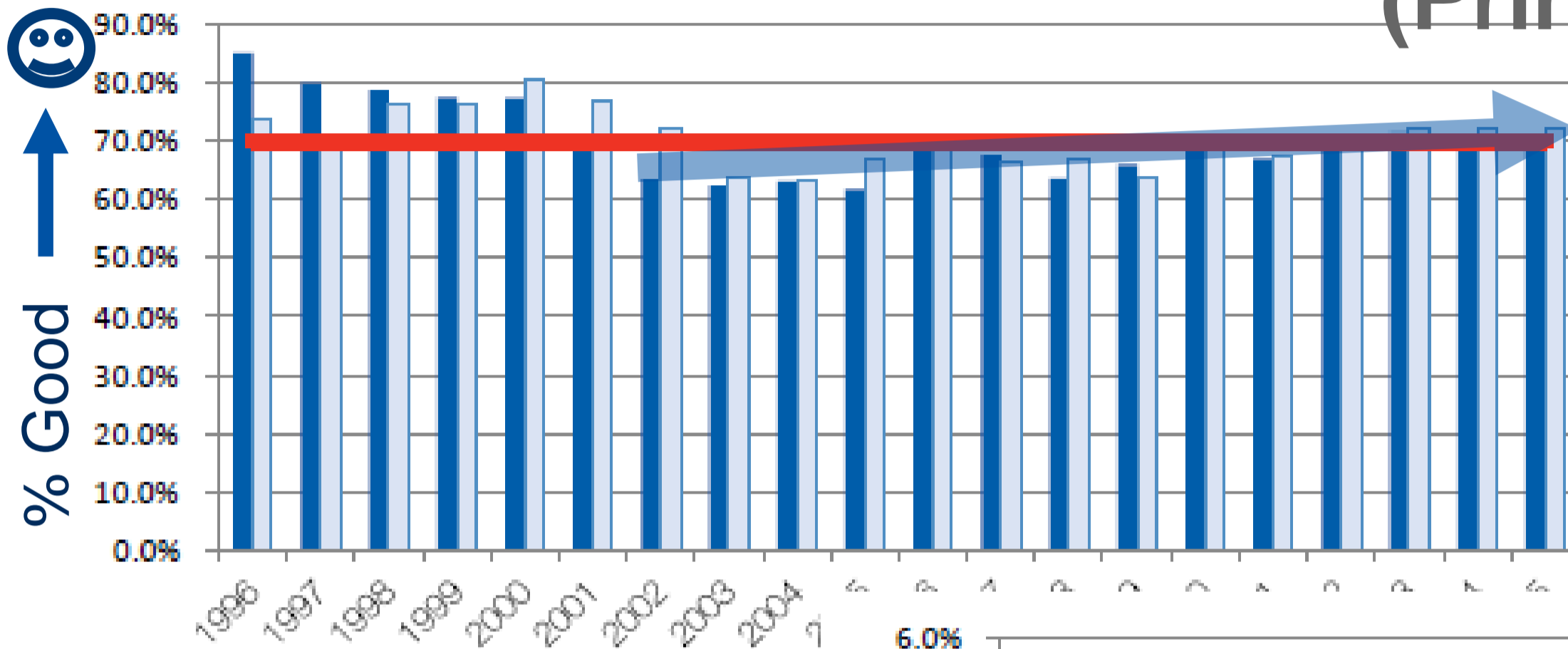


# Travel and Density

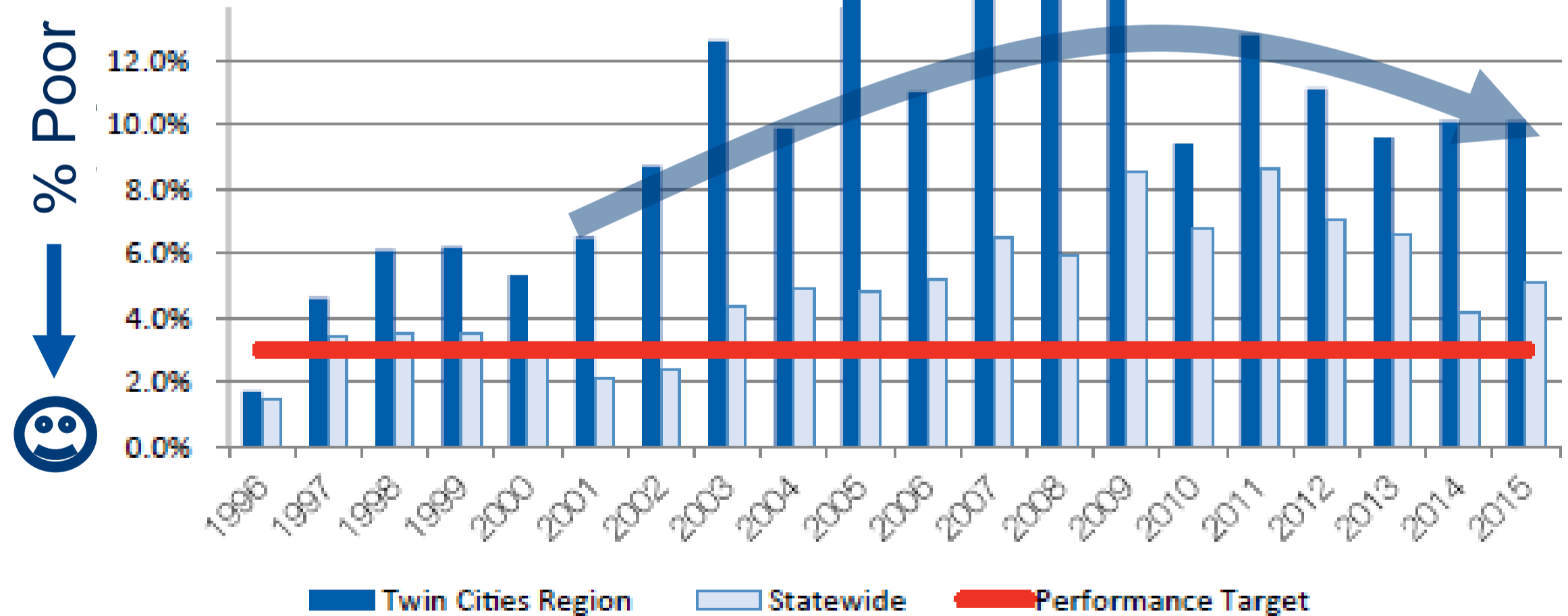
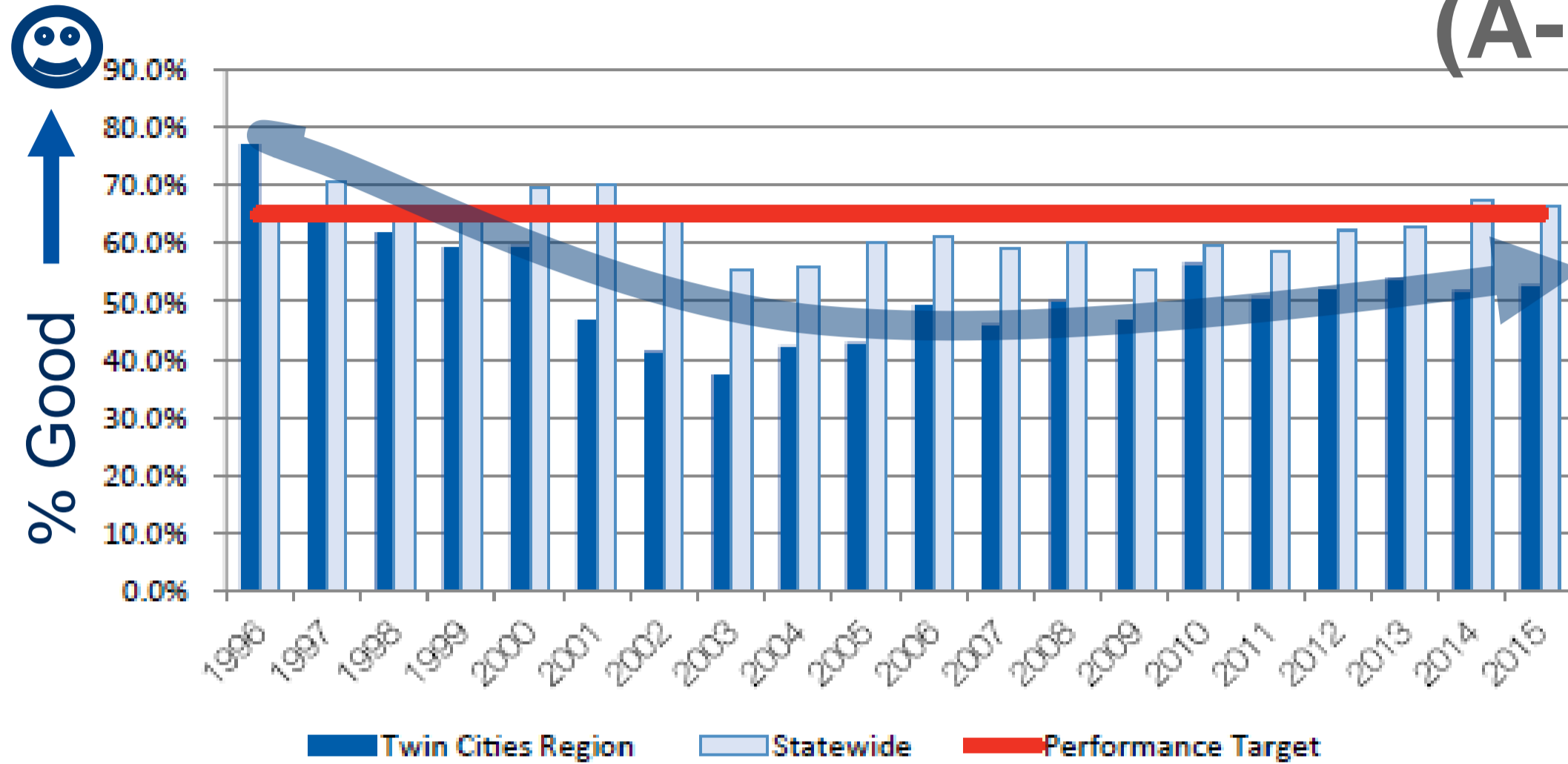


# Highways: Pavement Condition

## (Principal Arterials)

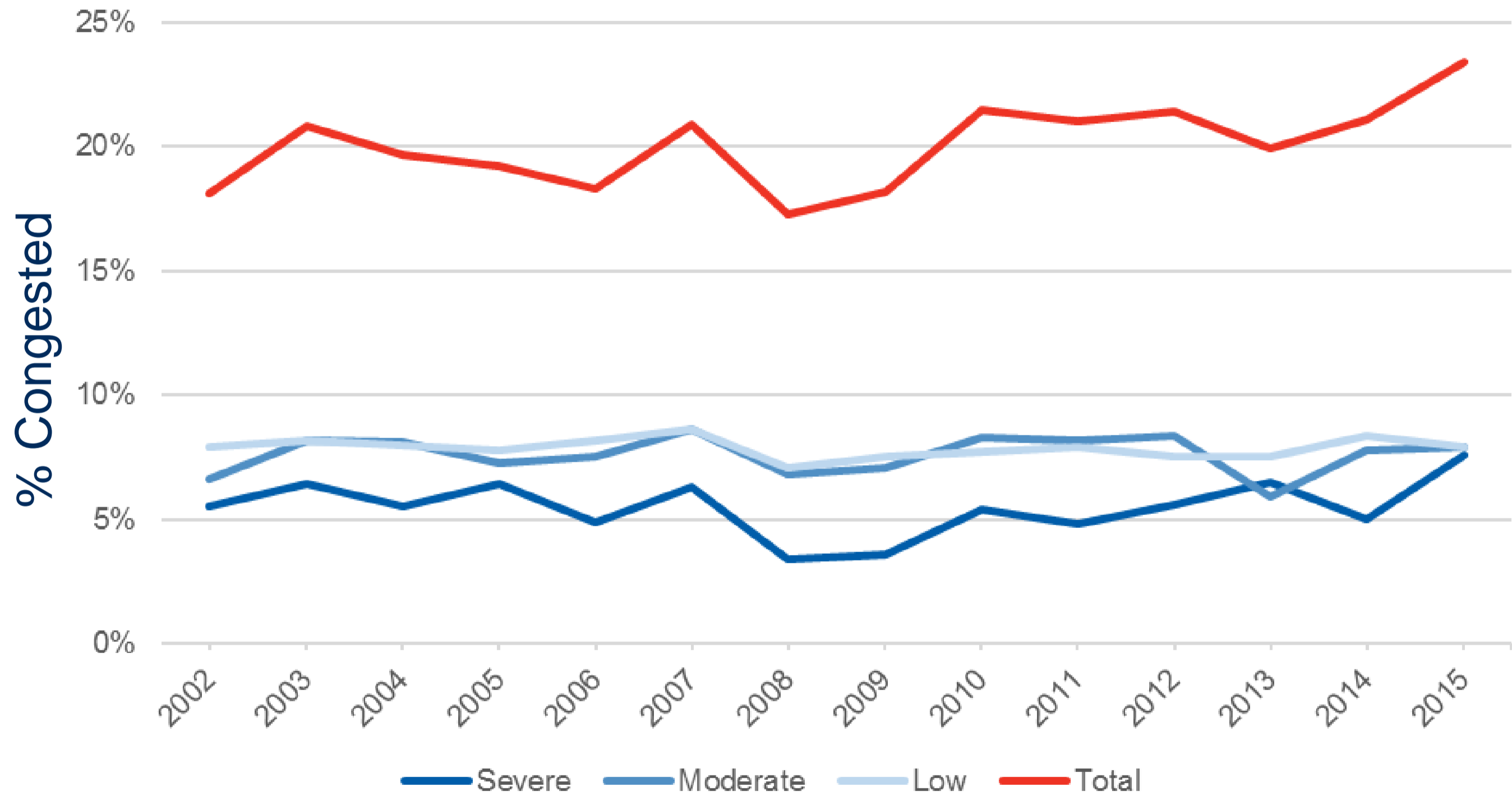


# Highways: Pavement Condition (A-minor Arterials)

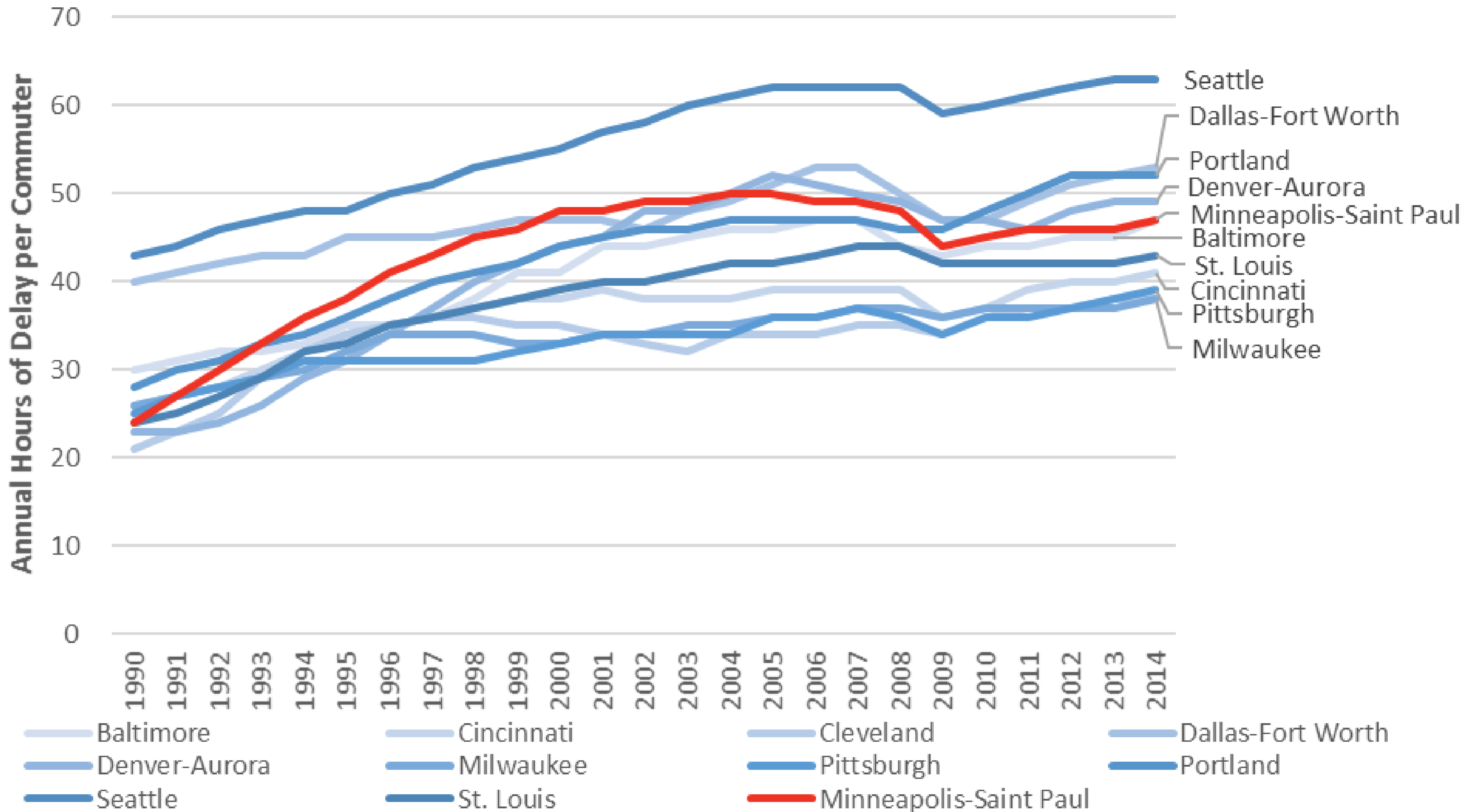




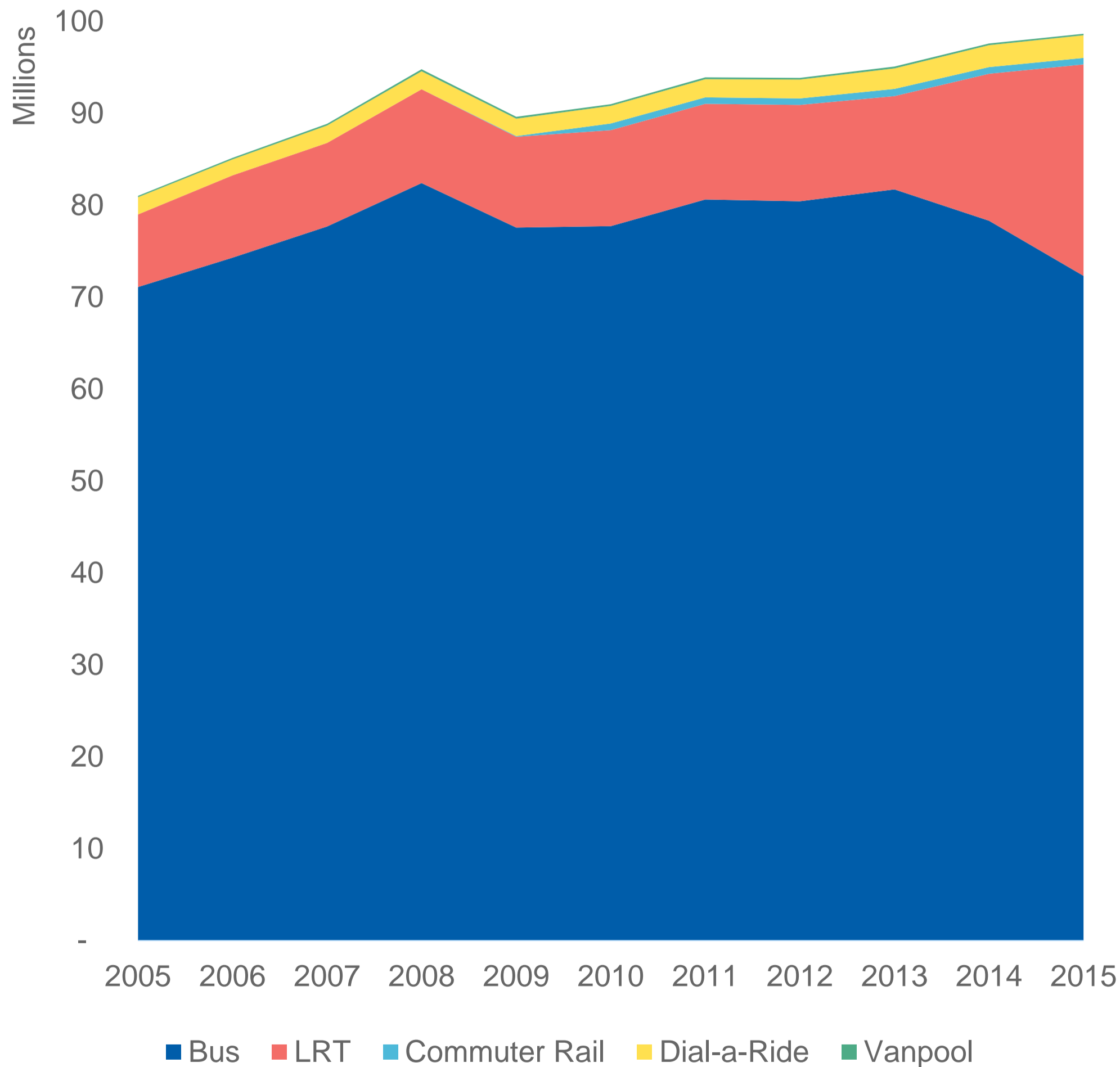
# Highways: Congestion



# Highways: Annual Delay



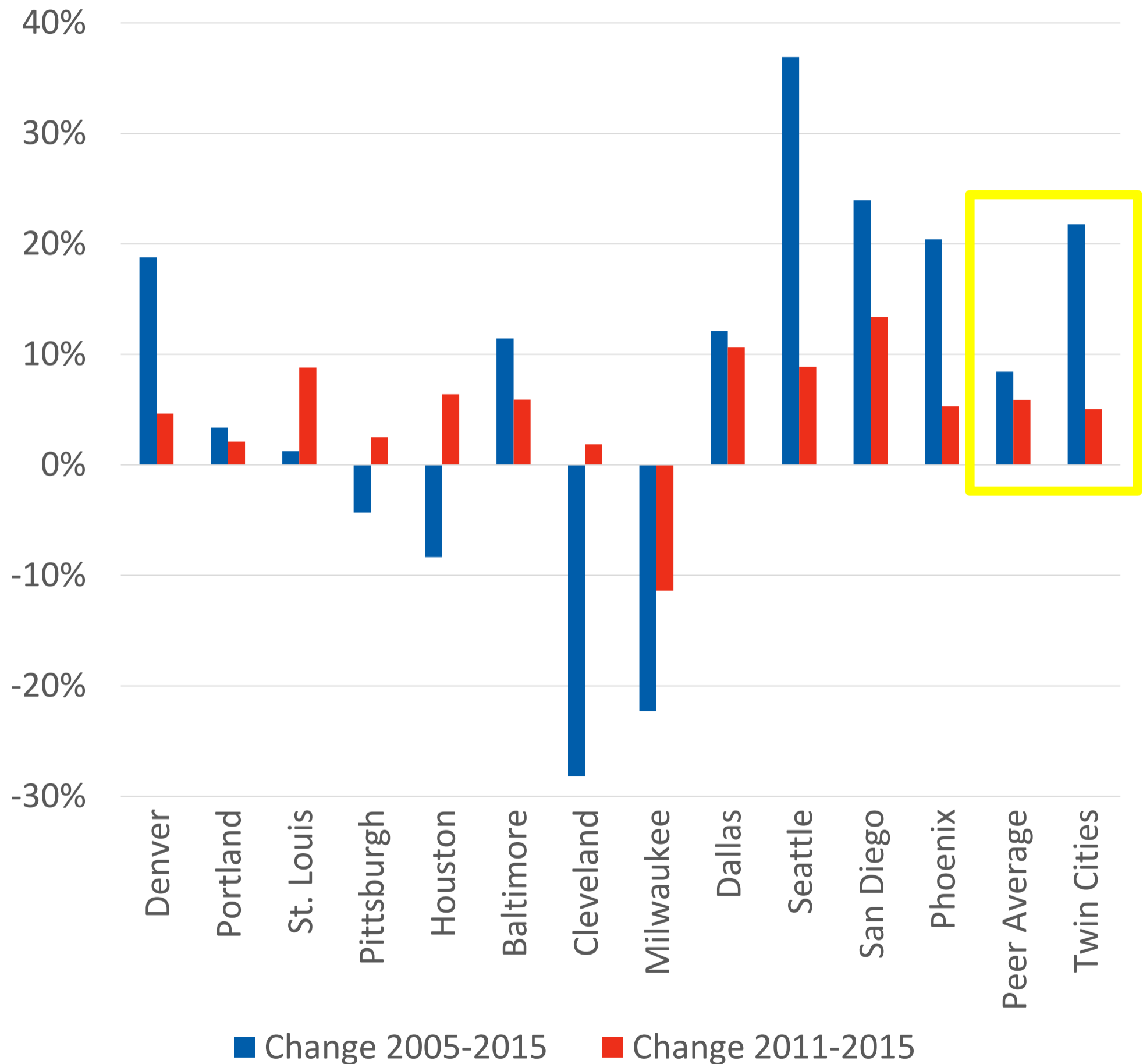
# Transit System: Ridership



Ridership has generally increased in the last decade:

- Bus ridership up and down
- Light rail ridership up

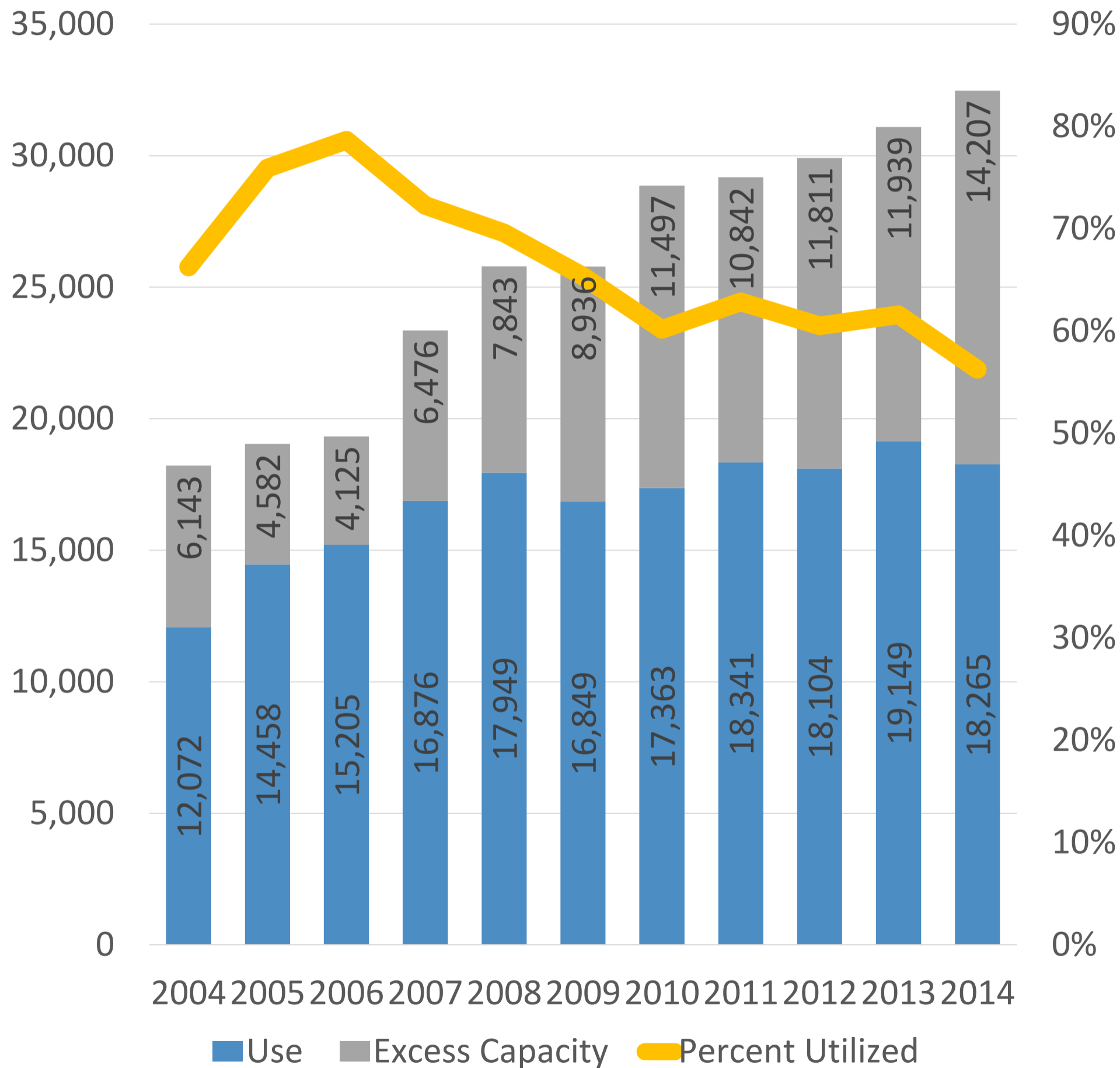
# Transit System: Peer Ridership



- Ridership growth has outpaced the peer average since 2005
- Twin Cities: 3rd
- Ridership growth in peer regions has outpaced Twin Cities since 2011
- Twin Cities: 8th



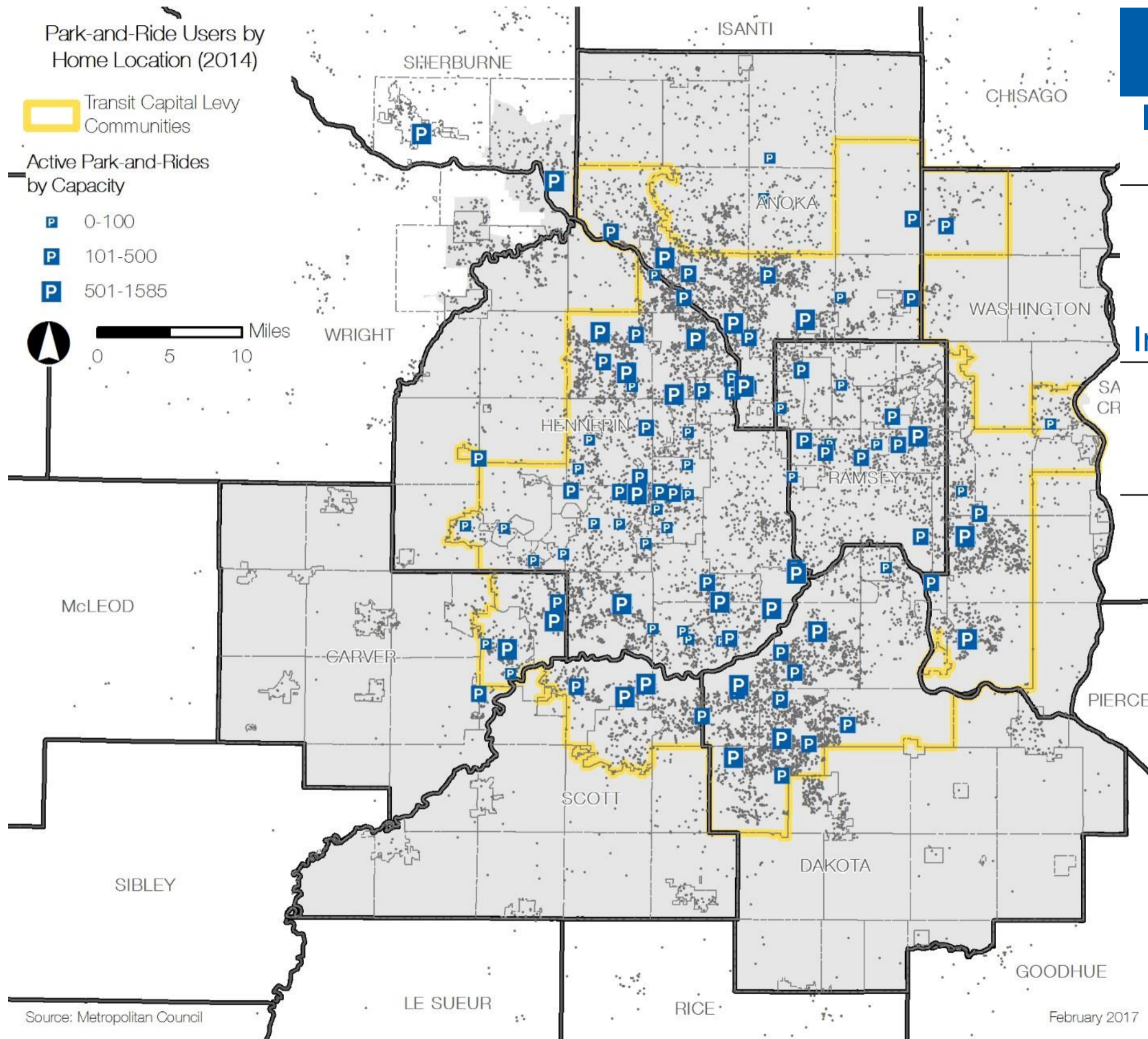
# Transit System: Park-and-Rides



- Growth in park-and-ride capacity has outpaced use
- Over 100 park-and-rides in the system, majority less than 100 spaces

# Transit System: Park-and-Rides

## (2014)



Minnesota User Home Origins	Count	% of Total
Inside Transit Capital Levy Communities	12,606	74.0%
Outside Transit Capital Levy Communities but Inside 7-County Metro	1,656	9.7%
Outside of the 7-County Metropolitan Area	2,784	16.3%
<b>Grand Total</b>	<b>17,046</b>	<b>100%</b>



# Transit System: Improvements

## Improving Transit Performance with Investments – Case Studies:

- A Line
  - 33 percent more riders in corridor
- METRO Green Line
  - \$5+ billion in development
- METRO Red Line Cedar Grove Online Station
  - Lower cost, faster trip, more riders
- Route 11 High-Frequency
  - 20 percent more riders



# Aviation System

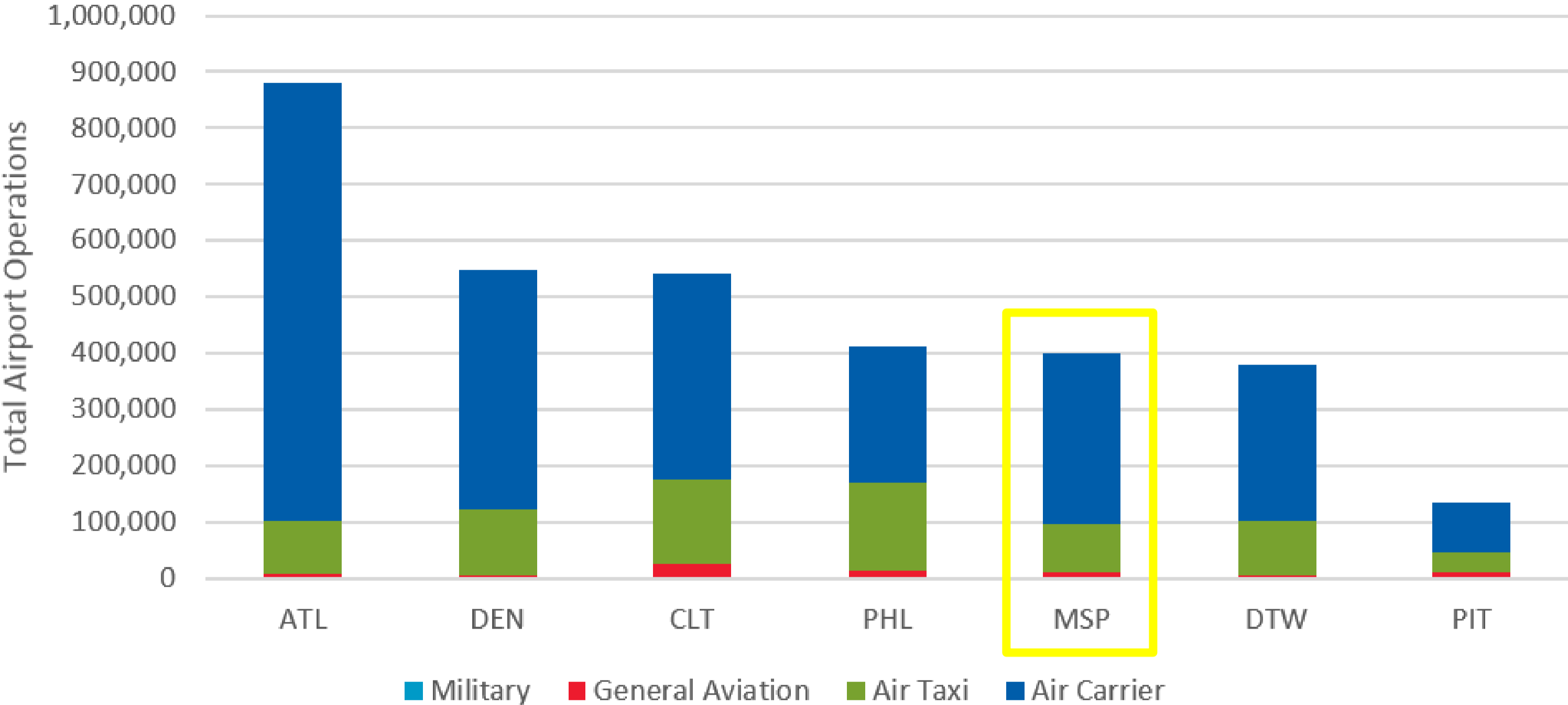
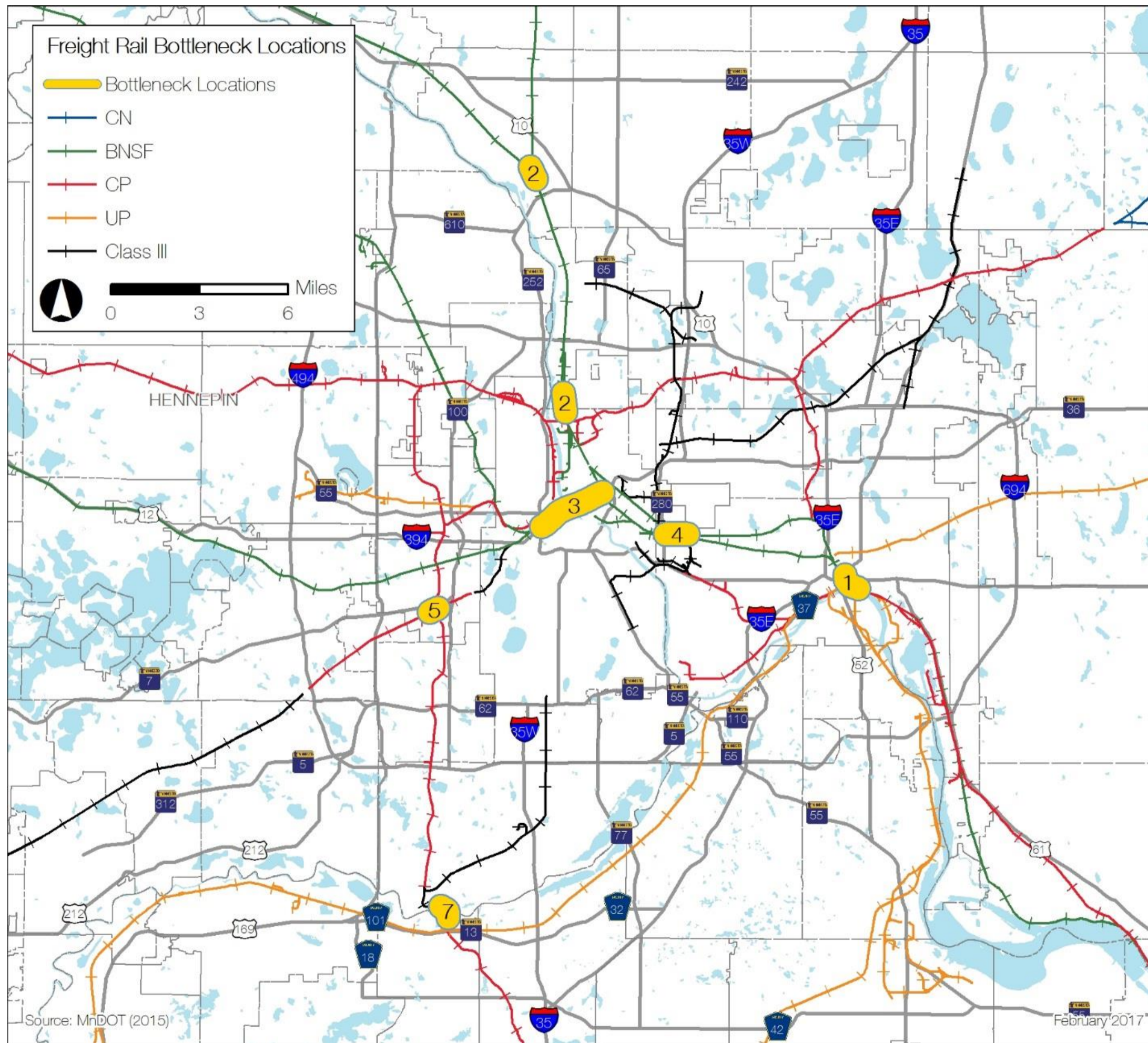


Figure 7-2: Total Annual Airport Operations by Type for MSP and Peer Airports (2015)



# Metro Area Freight System (Rail, Air, Water)

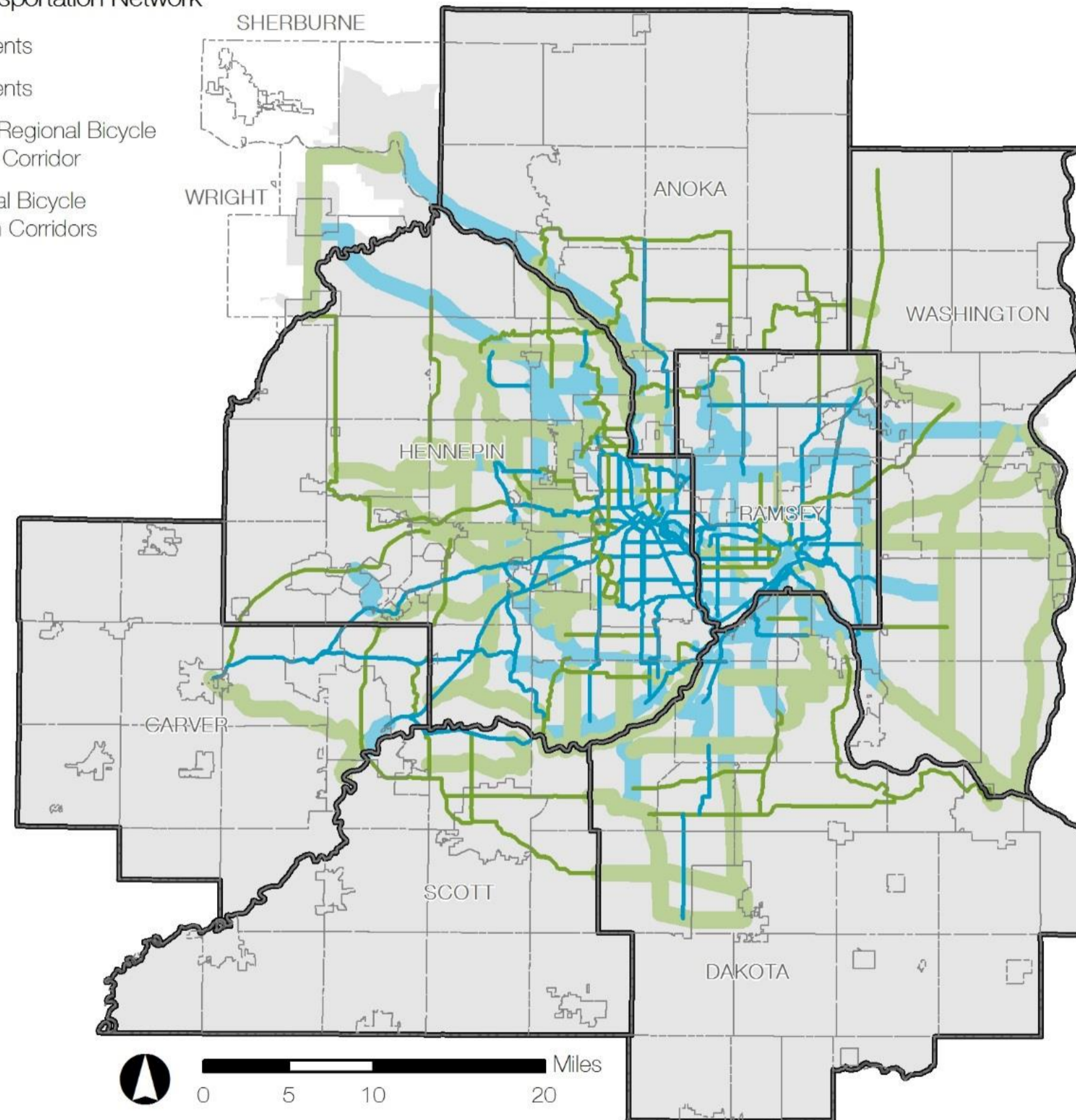




# Bicycle and Pedestrian System

Regional Bike Transportation Network

- Tier 1 Alignments
- Tier 2 Alignments
- Tier 1 Priority Regional Bicycle Transportation Corridor
- Tier 2 Regional Bicycle Transportation Corridors



Source: Metropolitan Council

February 2017

# Transportation System Performance Evaluation

Questions?

# Study Flow Chart

