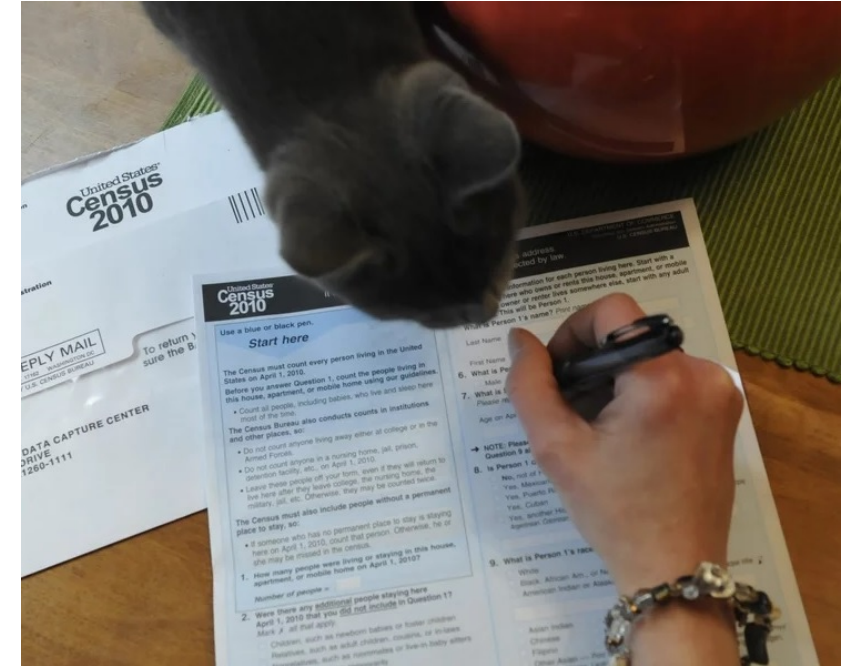


Growth and Change in the Region's Communities

Lessons from the 2020 Census

What is the Census?

- **census:** an official cataloguing of the population, with details on age, sex, etc.
- Censuses in the U.S.
 - Data collection once every 10 years
 - Mailed and online questionnaire options
 - Census-takers enumerate remaining places, and follow-up with nonrespondents
- Questions asked
 - Age, sex, race, ethnicity, rent or own home, family (or nonfamily) relationship among people living together



Count Everyone! (to the extent possible)

- Outstanding self-response in Minnesota and metro counties
 - Minnesota self-response: 74% of addresses, highest in nation
 - Self-responses are higher quality than the alternatives: neighbor/proxy response, administrative data-mining, imputation
- Minnesota population was more than expected
 - Pre-2020 projections were in the range 5,663,000 (lowest projection: Urban Institute) to 5,690,000 (highest projection: Met Council)
 - Ultimate 2020 Census result: **5,706,494**
 - Minnesota awarded the nation's 435th Congressional District: 713,312 residents per CD

What is available in the Census?

Now

- Total housing units
- Total households
- Total population + Adult population
- Race and Hispanic/Latino origin

Later (2022 Q3?)

- Detailed age/sex
- Rent or own home
- Relationships among people living together

Other surveys: Not Decennial Census

- Income
- Disability
- Housing costs
- Employment
- Commuting
- *These are featured in American Community Survey*

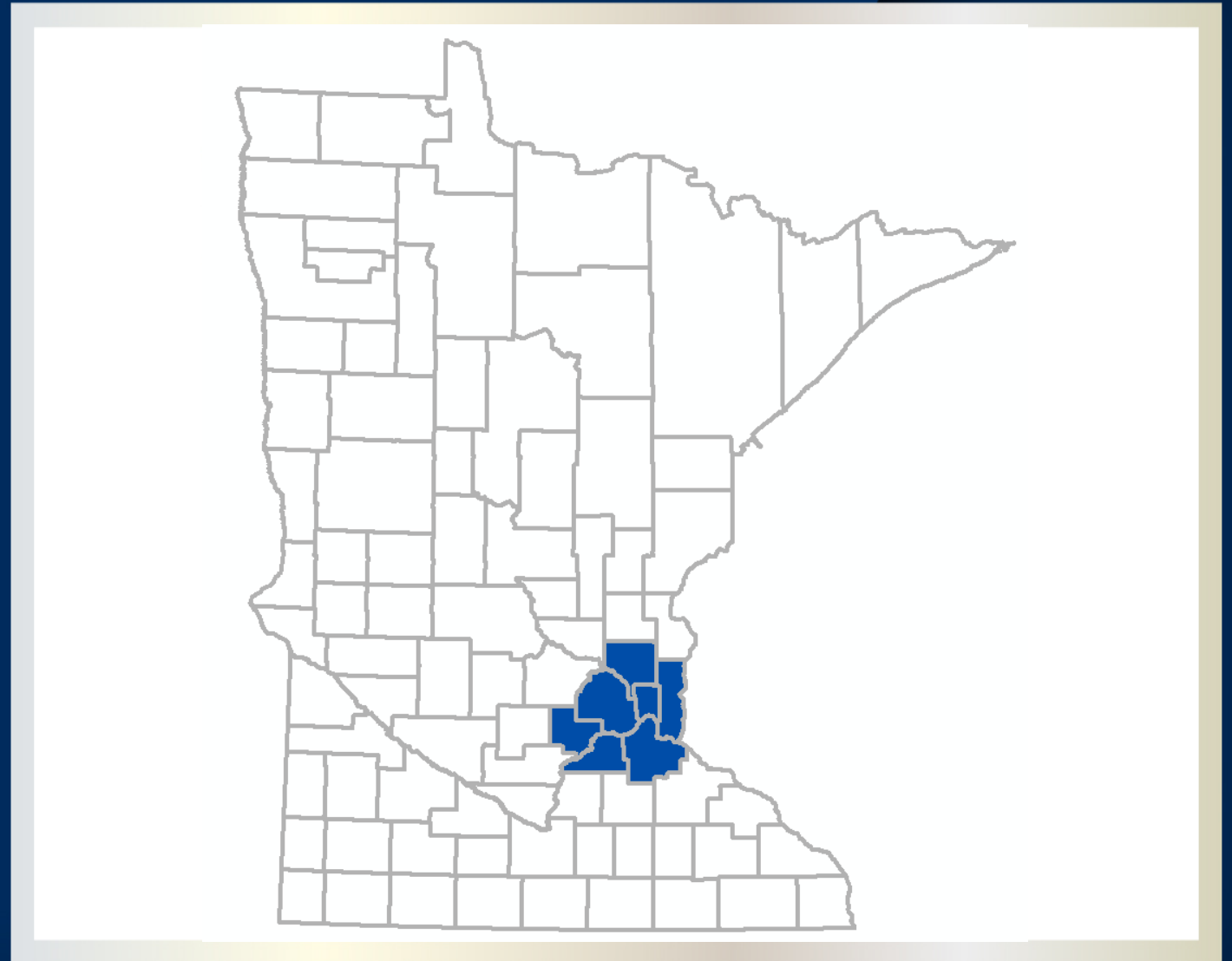
Region is home to majority of Minnesotans

The 7-county Twin
Cities region:

3.163 million residents
(55% of Minnesota's
population)

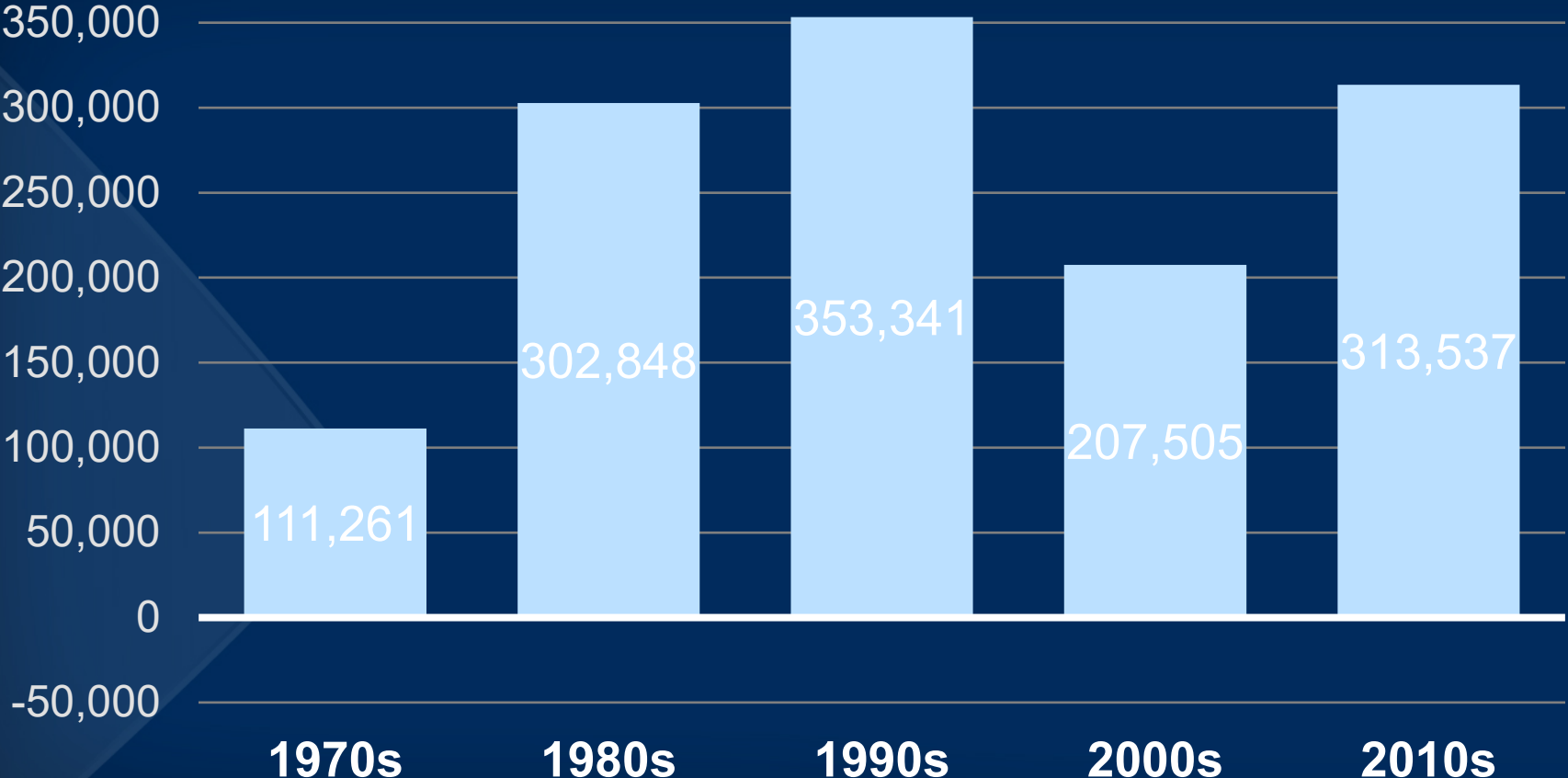
**+ 313,500 people, 2010-
2020**

(78% of state's 2010-2020
growth)



Growth in historical context

CHANGE IN POPULATION



Most cities/ townships are adding people

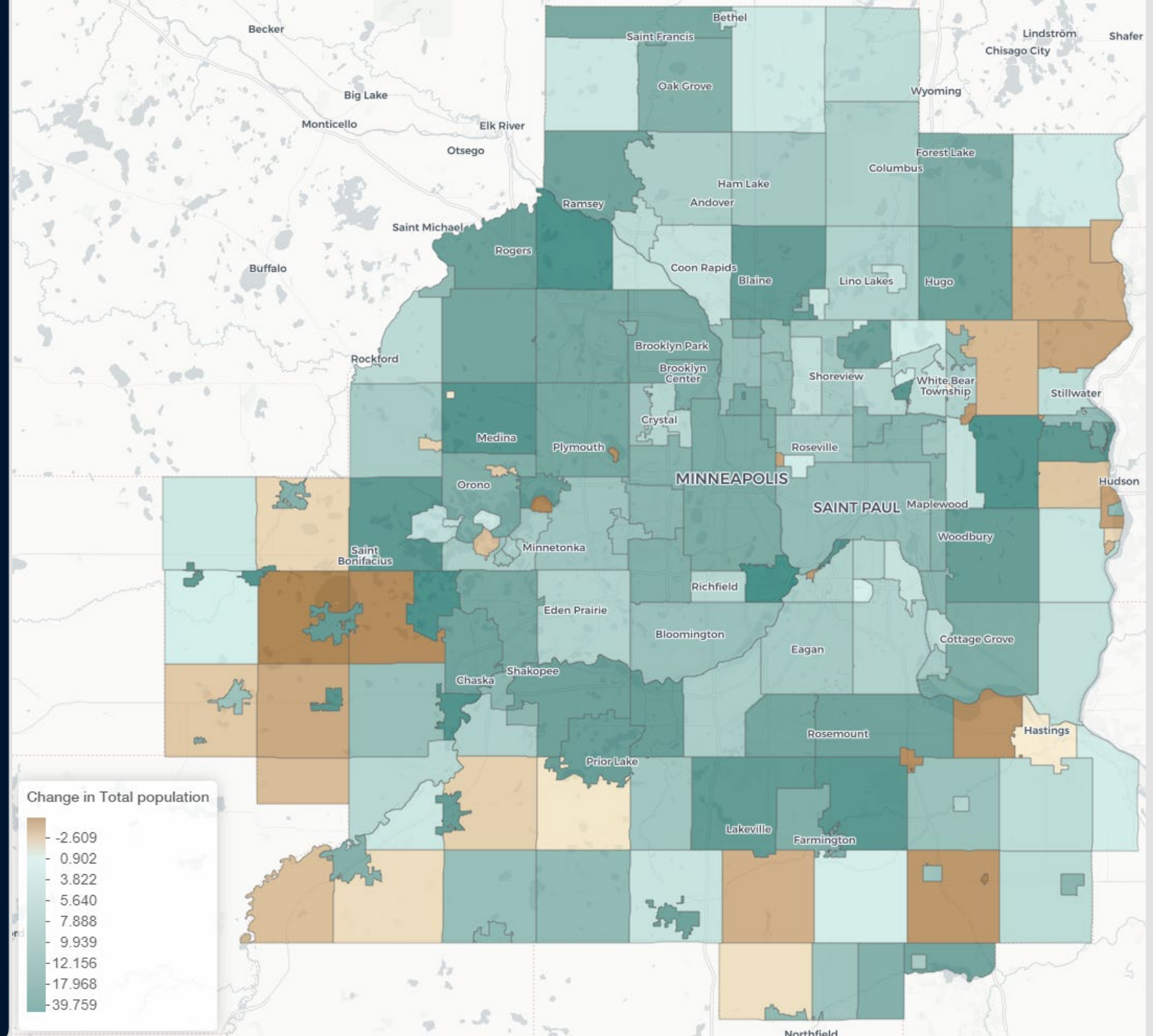
2010-2020:
+313,500 people

*High population
growth*

*Small population
growth*

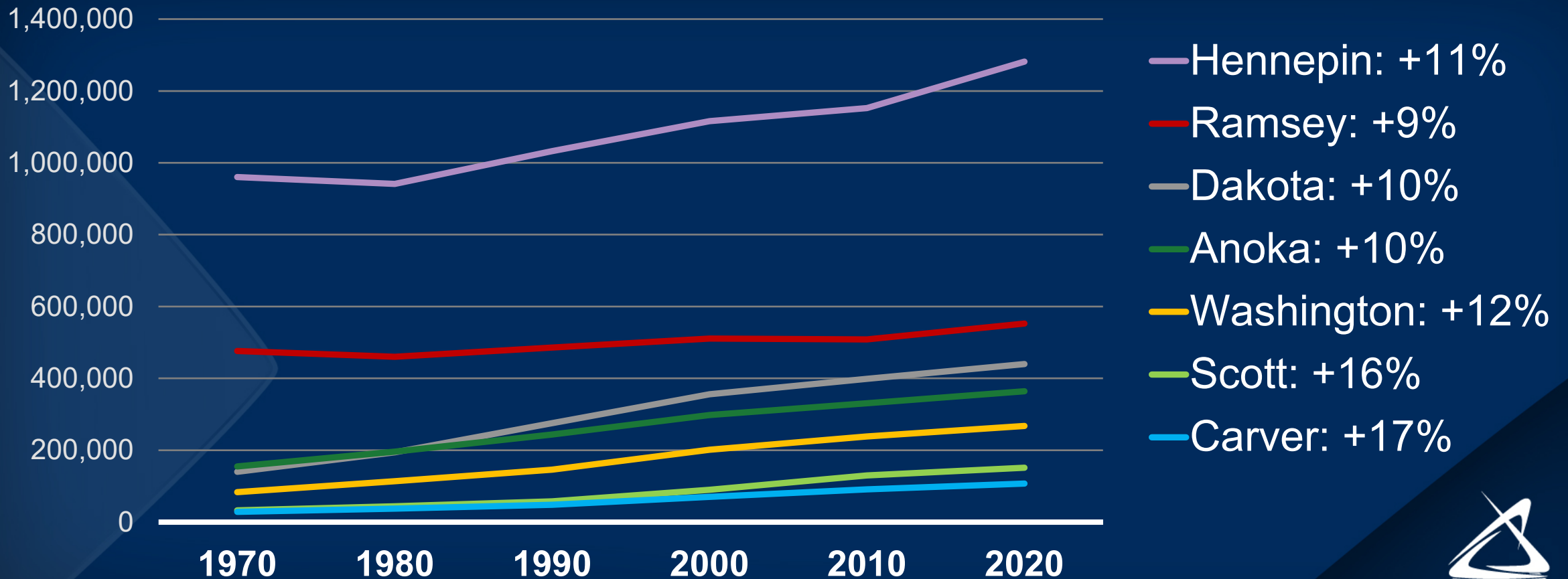
*Small population
loss*

*High population
loss*



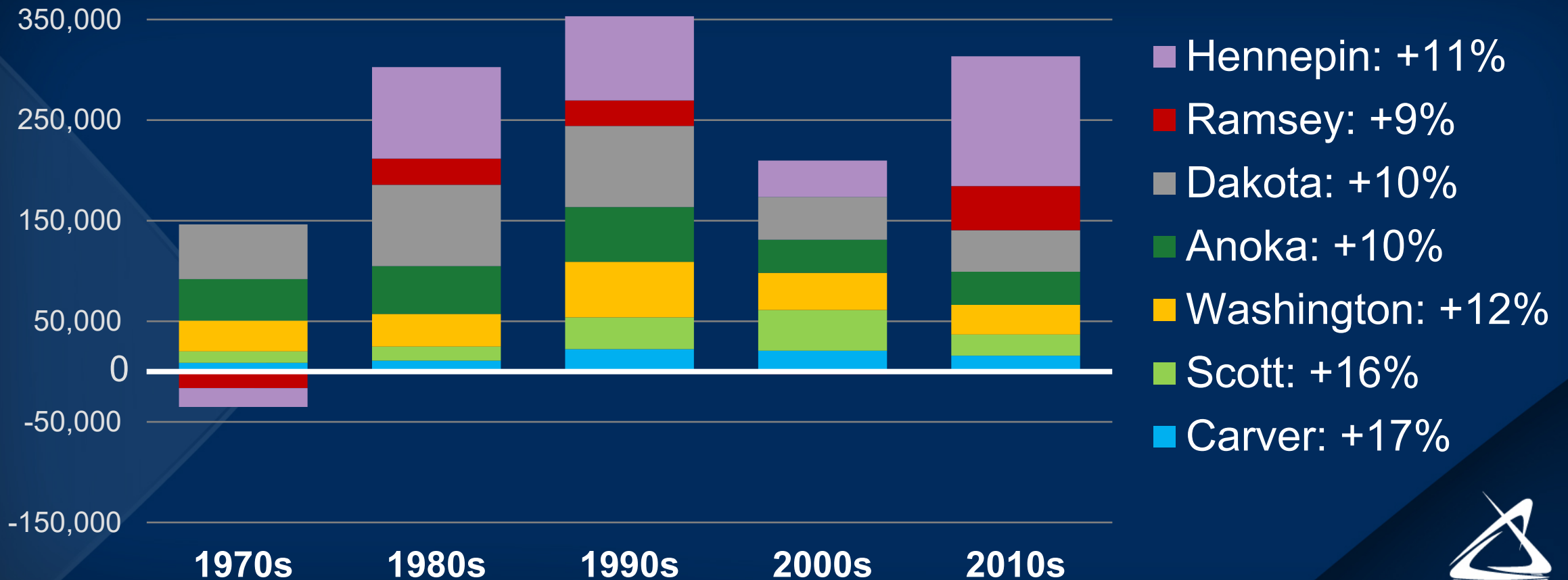
Every county grew in 2010s

POPULATION BY COUNTY



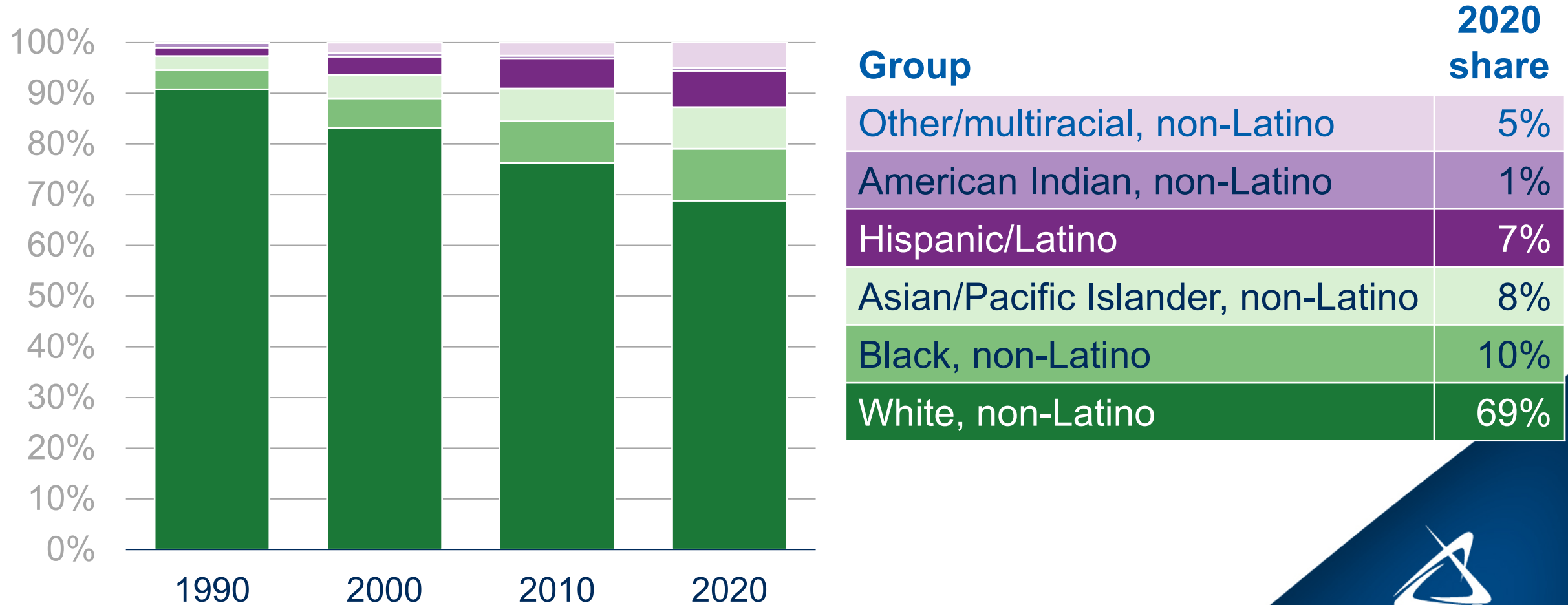
Population growth by county

CHANGE IN POPULATION BY COUNTY



Diversity is increasing

POPULATION BY RACE AND HISPANIC/LATINO ORIGIN, 1990-2020



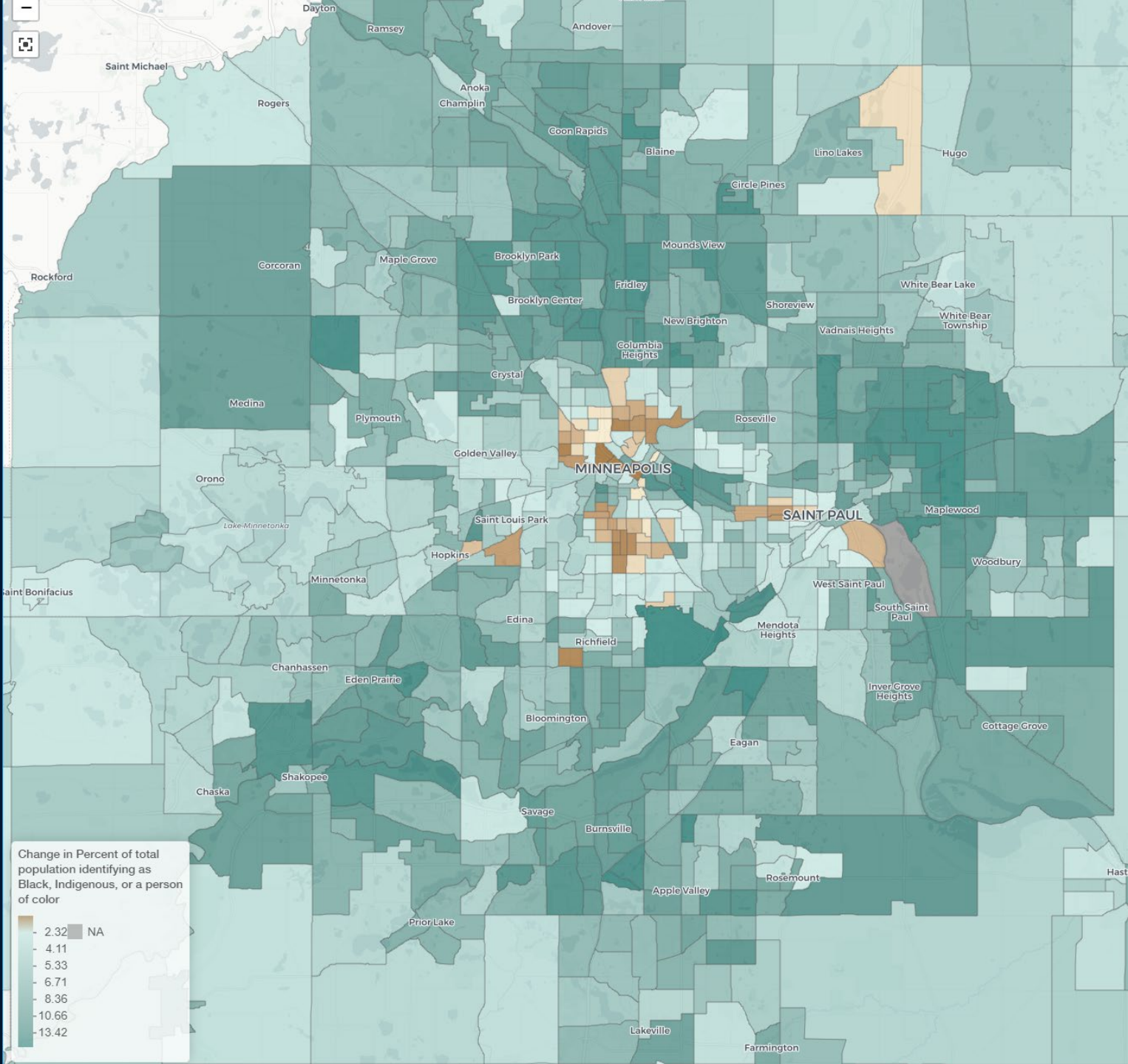
Most areas saw increase in diversity (2010-2020)

Largest increase in % BIPOC

Smaller increase in % BIPOC

Smaller decline in % BIPOC

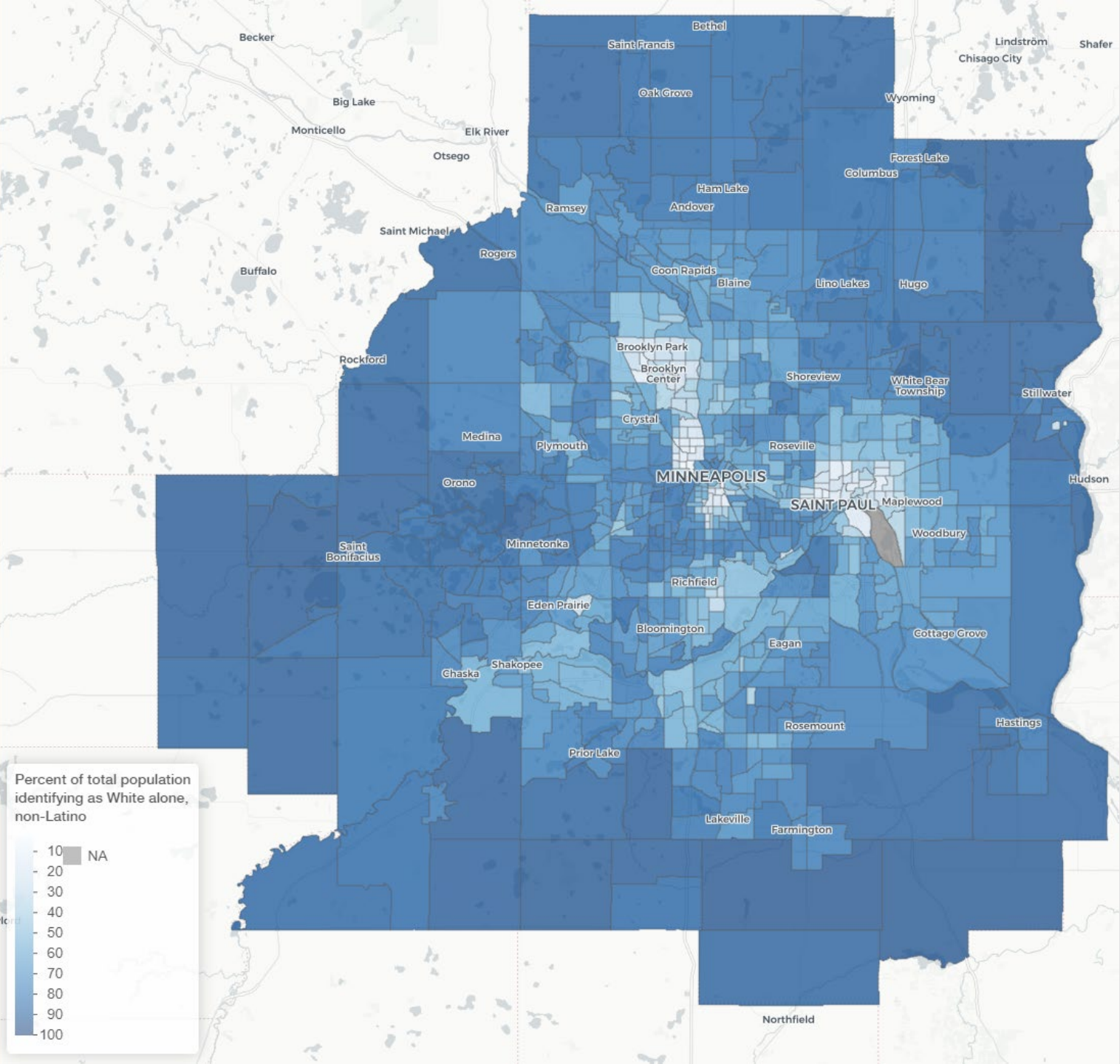
Largest decline in % BIPOC



BUT: Many areas remain mostly White (2020)

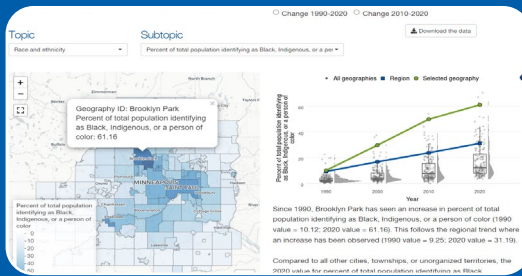
Highest % White

Lowest % White



metro council.org/Census2020

General audiences



[Interactive map](#)

[Digital report](#)

[Download Data](#)

[Community Profiles](#)

Local jurisdictions

Category	2010 Census	2020 Census	Change	Percent Change
Total Population	10,000	11,000	1,000	10.0%
White	8,000	8,500	500	6.2%
Black	1,000	1,500	500	50.0%
Hispanic	500	800	300	60.0%
Other	500	200	-300	-60.0%

[Summary of jurisdictions](#)

[Customized report for each jurisdiction](#)

Advanced users

[Downloadable spatial files for GIS analysis](#)

[Data with standardized geographies](#)

Contact Us

Matt Schroeder

Matt.Schroeder@metc.state.mn.us

651.602.1513

Todd Graham

Todd.Graham@metc.state.mn.us

651.602.1322

12/15/2021

