

2040 Transportation Policy Plan Amendment 1 Arterial BRT Updates

TAB

November 17, 2021

Katie Roth, Assistant Director, BRT Projects

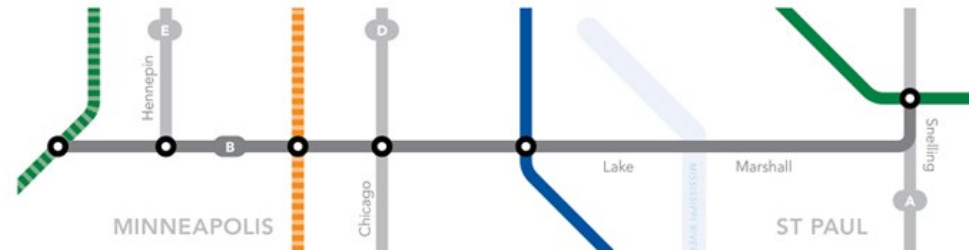
Metro Transit

Arterial BRT Changes

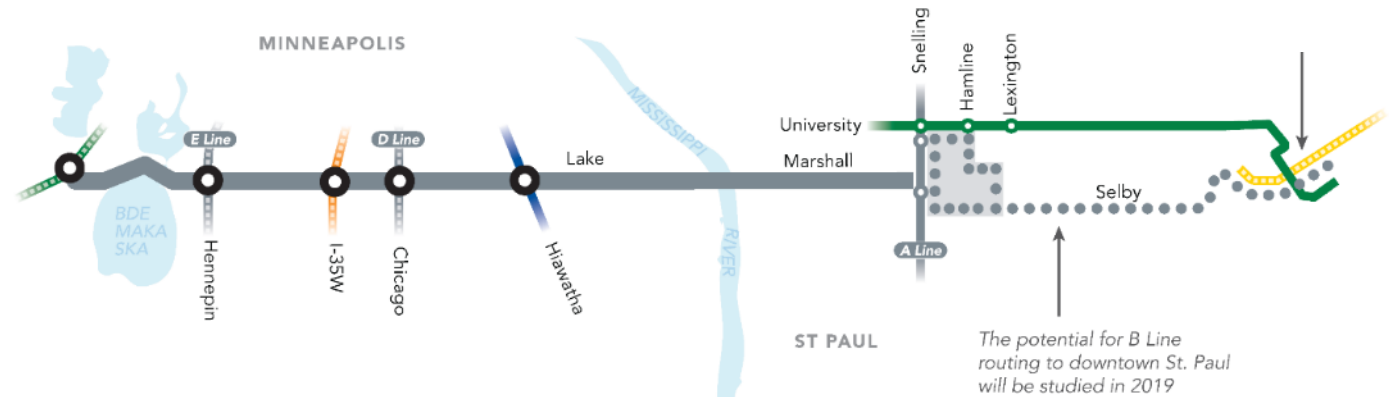
- Update METRO B Line (Lake/Marshall/Selby)
 - Updated alignment; included in Current Revenue Scenario
- Update METRO E Line (Hennepin/France)
 - Included in Current Revenue Scenario
- Incorporate Network Next planning outcomes into long-range plans
 - F, G lines in Current Revenue Scenario
 - H Line in Increased Revenue Scenario
 - 7 additional unnamed lines in Increased Revenue Scenario to be prioritized for implementation timing in a future plan update

METRO B Line (Lake/Marshall/Selby)

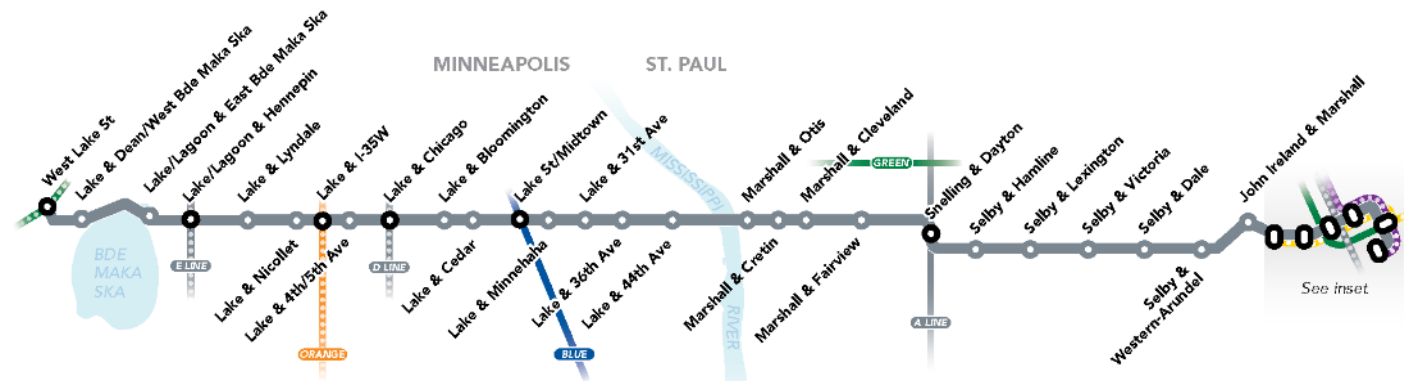
- 2012-2019: Initial corridor alignment from West Lake to Snelling & University



- 2019: St. Paul request to extend line to downtown, following Route 21
- Nov. 2019: Alignment recommendation



- October 2020: \$65 million project fully funded
- 2020-2021: Corridor planning and continued engagement
- Oct. 2021: Council approval of Final Corridor Plan

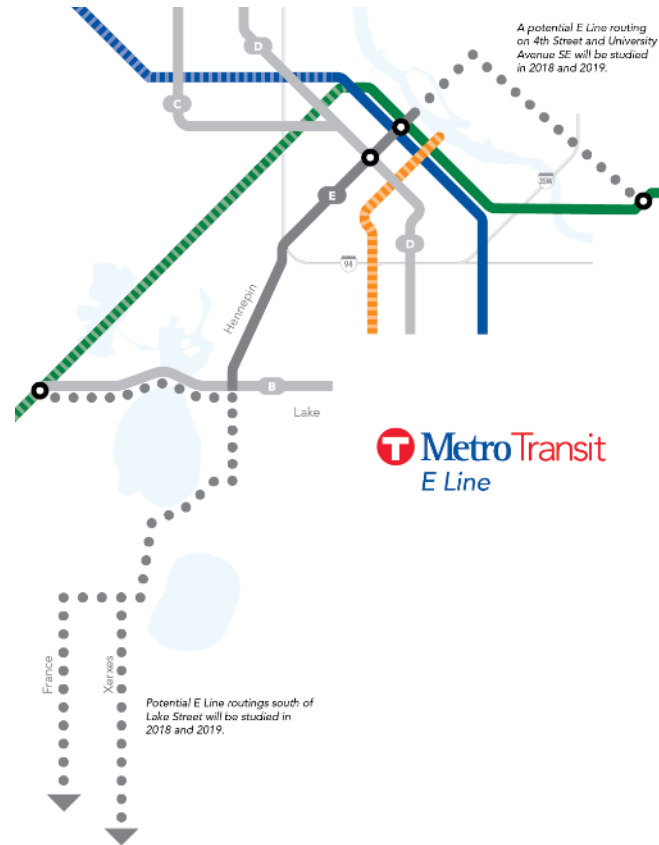


METRO E Line (Hennepin/France)

- 2012-2018: Initial corridor alignment from downtown to West Lake Street Station
- Unresolved study-phase questions around network integration



- 2018-2019: E Line Corridor study considered alignment alternatives

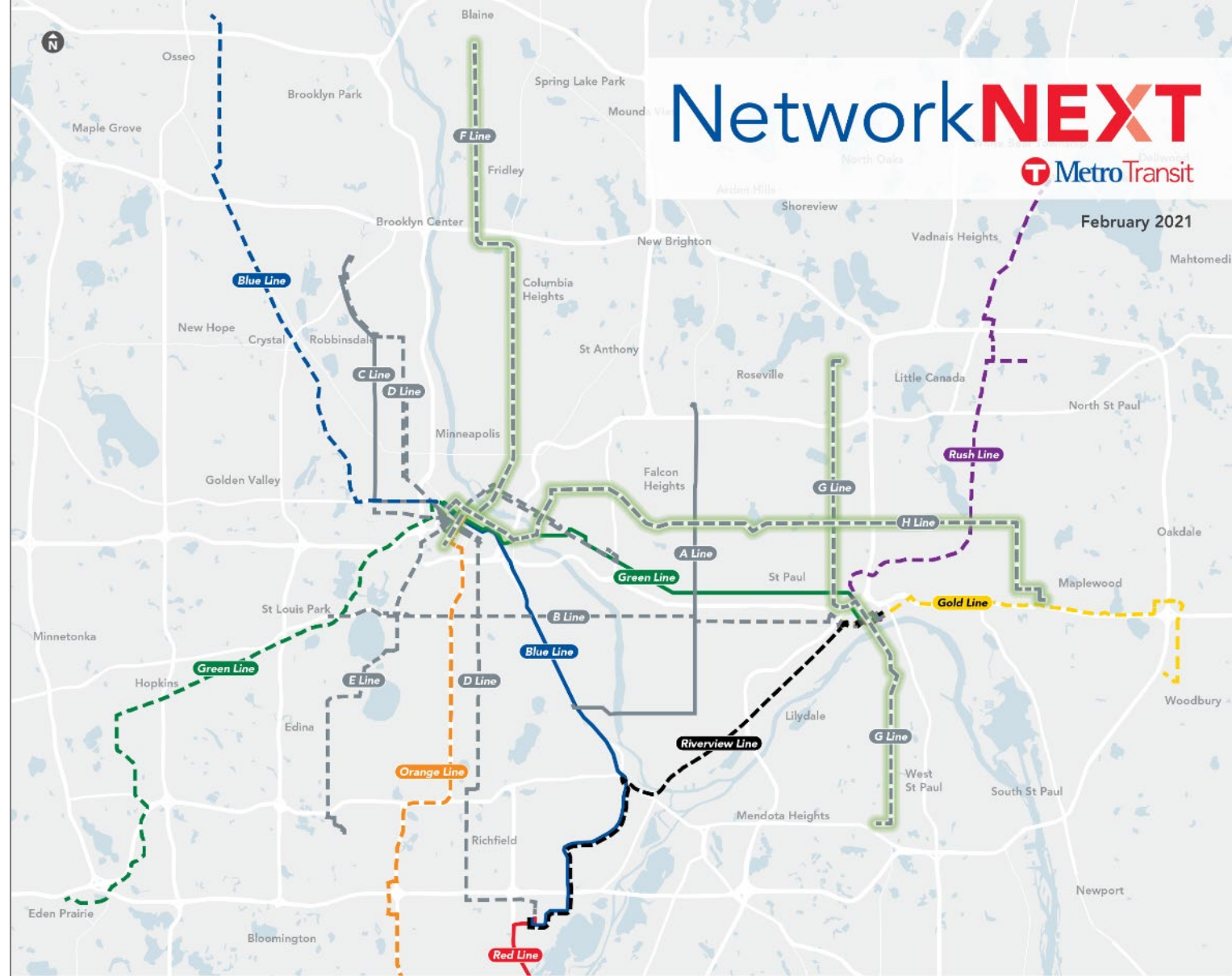


- Jan. 2020: Council adopted recommended alignment
- 2021: \$60 million project fully funded
- 2020-2021: Development of Corridor Plan



Network Next: F, G, and H lines

- March 2021: Council adopted Network Next BRT planning results and named the F, G, and H lines from near-term priority corridors
- April 2021: TAB action to award \$25 million in Regional Solicitation funds to F Line
- Planning and project coordination underway on F, G, and H lines



NetworkNEXT

MetroTransit

February 2021

Current METRO network

- A Line
- C Line
- Blue Line
- Green Line

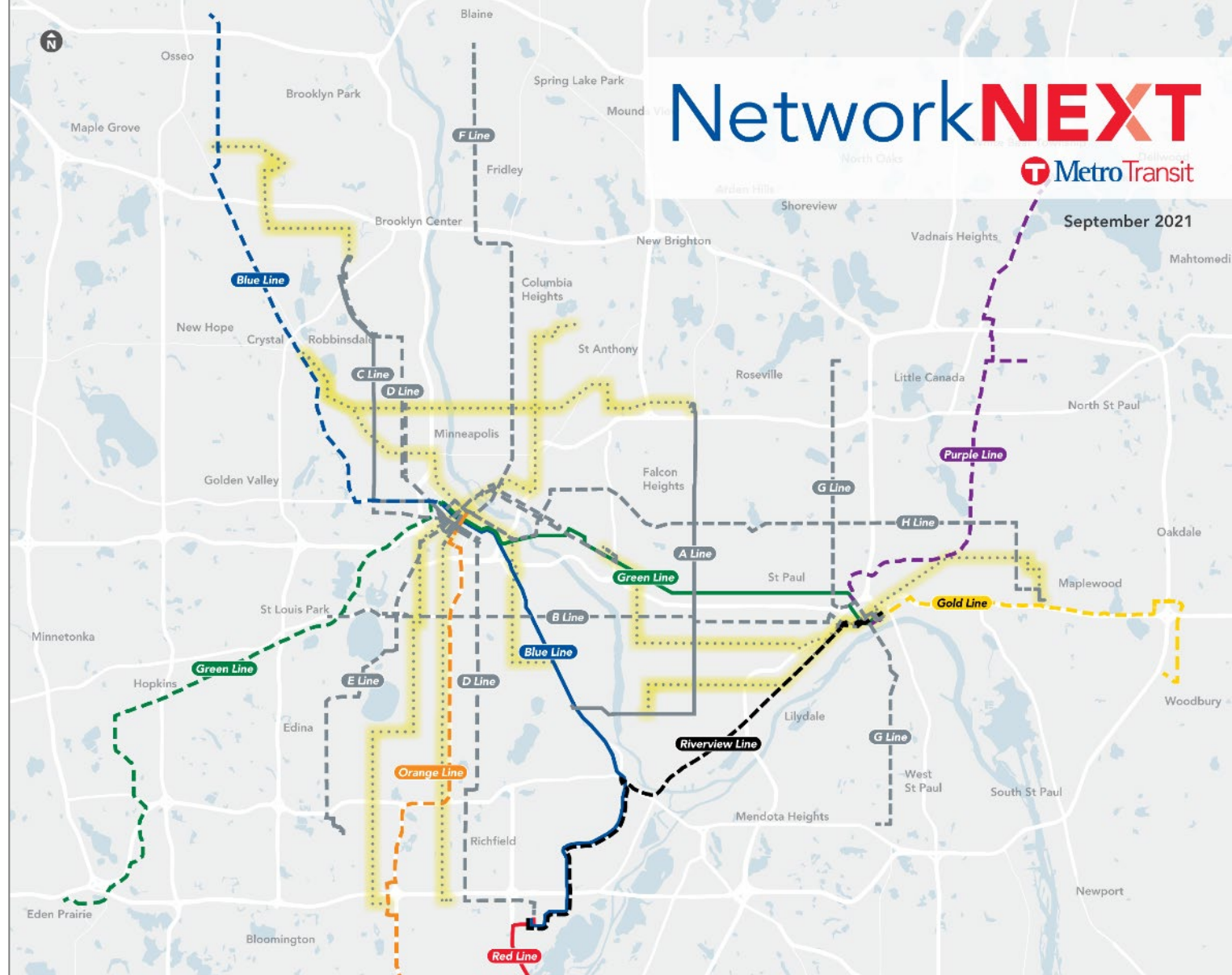
Planned METRO network

- - - Planned BRT
- - - Orange Line
- - - Green Line Extension
- - - Gold Line

- - - Blue Line Extension
- - - Rush Line
- - - Riverview Line

Network Next: Additional 2040 candidate corridors

- Oct. 2021: Council adopted Network Next recommendations for 2040 expansion corridors
- 7 additional BRT corridors identified as region's 2040 expansion priorities
- Positions these corridors to replace expansion priorities identified in the current TPP increased revenue scenario



NetworkNEXT



September 2021

Current METRO network

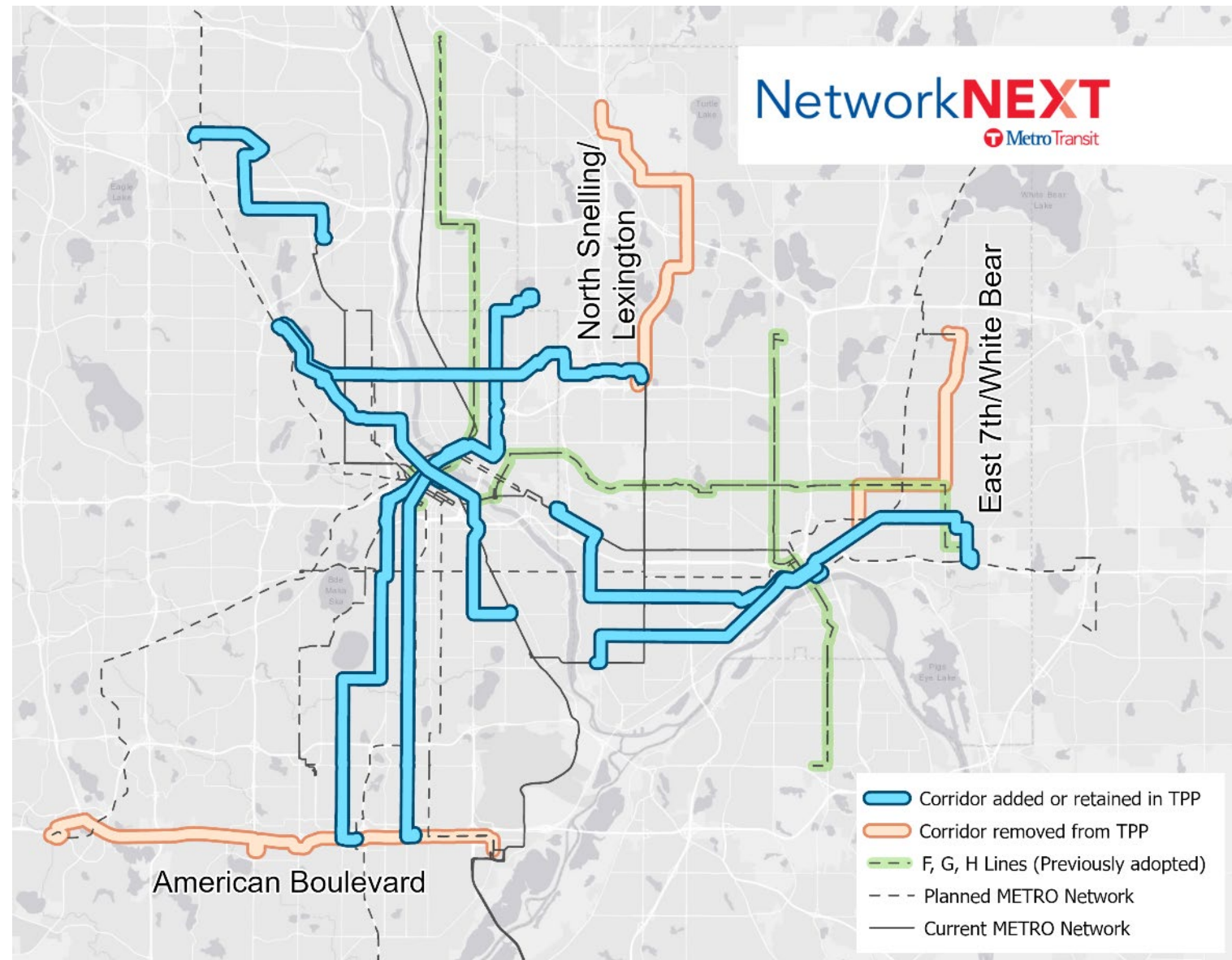
- A Line
- C Line
- Blue Line
- Green Line
- Red Line

Planned METRO network

- - - Planned BRT
- Additional candidates for BRT between 2030 and 2040
- Orange Line
- Gold Line
- Purple Line
- Green Line Extension
- Blue Line Extension
- Riverview Line

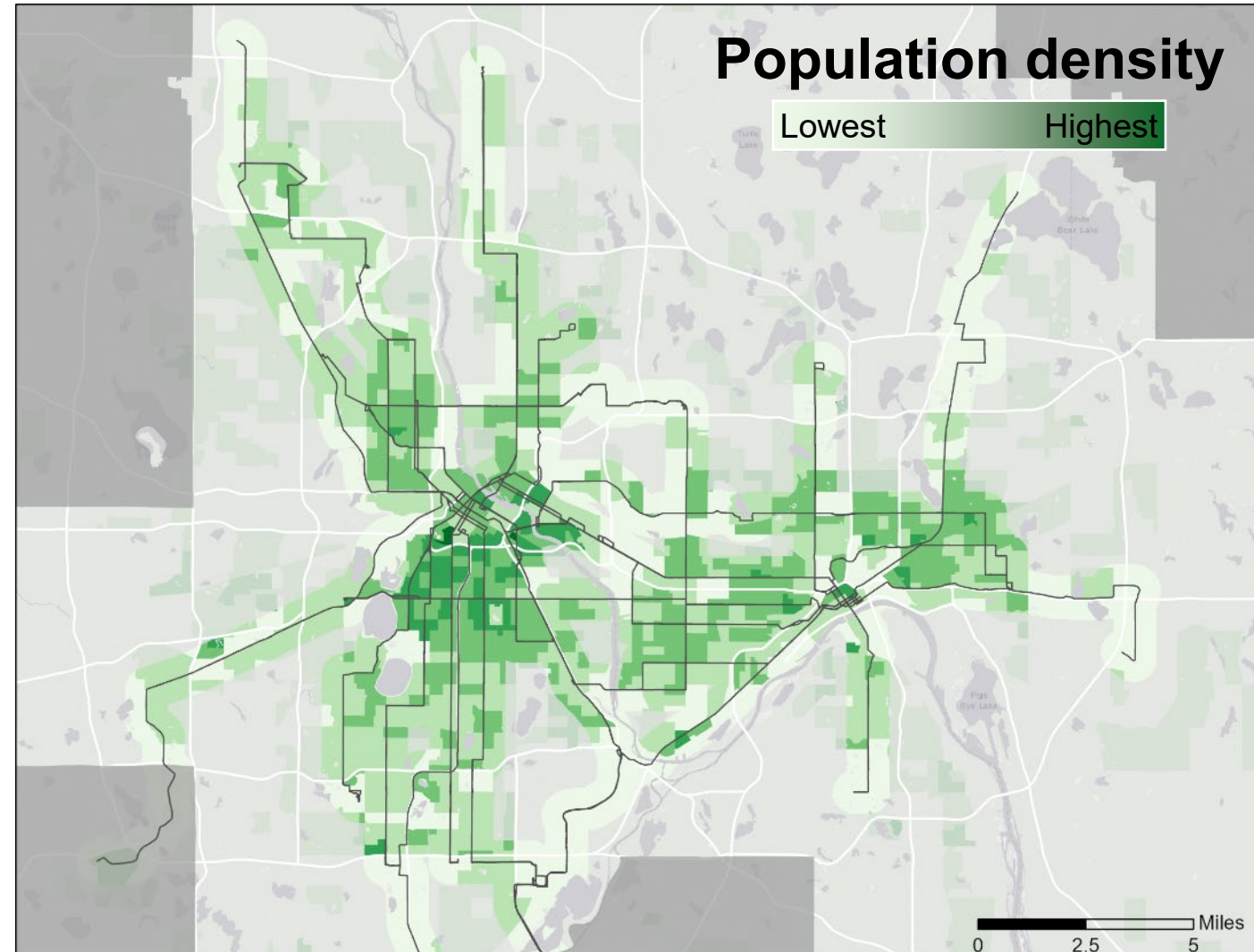
Changes to corridors currently included in TPP

- Six new/modified corridors
- Corridors no longer included in 2040 expansion priorities:
 - East 7th/White Bear Avenue
 - American Boulevard
 - North Snelling/Lexington (A Line extension)
- Arterial BRT planning update in 2025



A fully realized 2040 METRO network would provide *fast, frequent, high-quality transit access to the region*

- 5% of the region's land area, but 28% of its residents
- 77% of Minneapolis & St. Paul residents
- 46% of the region's BIPOC residents
 - 65% of Black residents
 - 58% of Indigenous residents
- 30% of region's households
 - 60% of renter households
 - 60% of zero-car households



A fully realized 2040 METRO network would provide *access to opportunity for those who need it most*

- 47% of people with low incomes in the region
- 60% of renter households
- 60% of zero-car households
- 44% of all jobs in the region (750,000)

