

Statewide Multimodal Transportation Plan



MINNESOTA **GO**

Transportation Advisory Board

August 17, 2022

Minnesota GO 50-year Vision

What are we trying to achieve?

Statewide Multimodal Transportation Plan

How are we going to achieve it?

Modal and System Plans

What does that mean for each type of transportation?

< Considered by the State Highway Investment Plan >



Greater
Minnesota
Transit
Investment Plan



Pedestrian
Plan



Bicycle
Plan



State
Highway
Investment
Plan



Freight
System
Plan



Aviation
Plan



Rail
Plan



Ports &
Waterways
Plan

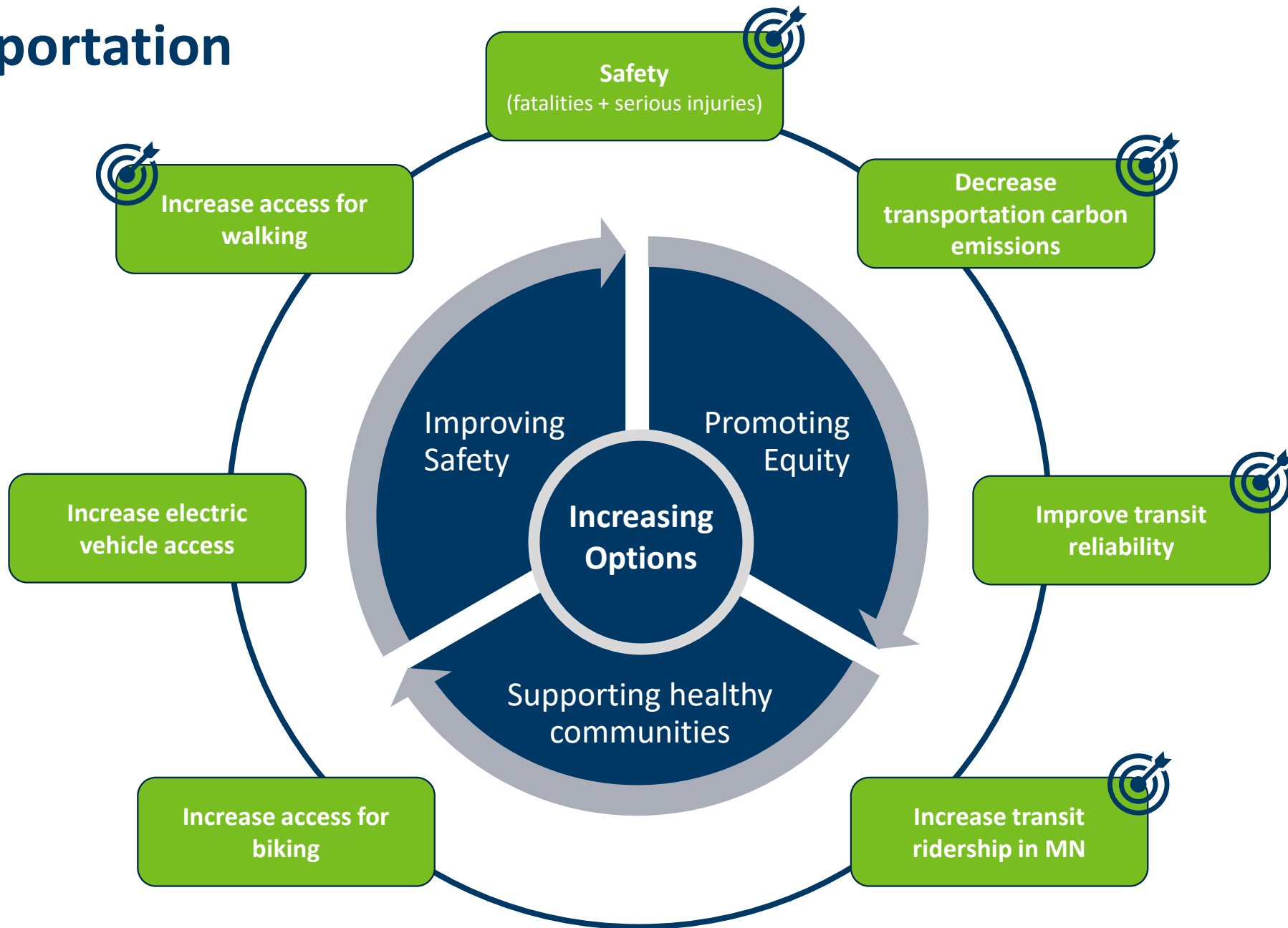
< Considered by the Freight System Plan >

Key Changes Since 2017 Plan

Climate

- Need to shift to more climate-friendly transportation options.
- Examples
 - Greenhouse gas emission target
 - Zero emission light-duty vehicles sold target
 - Vehicle miles traveled per capital target
 - System and asset resiliency performance measures

Measuring Transportation Performance



Measure
Key measures where MnDOT has influence

Outcome
Important outcomes to the agency and stakeholders



MnDOT Defined Target
Specific values to evaluate the measure

14% by 2040 target aligns with national and local efforts

Local

Hennepin County: -26% by 2050
(per capita from 2017 baseline)

Minneapolis: -21% by 2030

Eden Prairie: -14% by 2050
(per capita from 2017 baseline)

St. Louis Park: -12% by 2030
(per capita from 2014 baseline)

St. Paul: -40% by 2040
(reduction of single occupancy vehicle travel demand)

National

California: -15% by 2050
(from 1990 baseline)

Colorado: -10% by 2030

Delaware: -20.4% from 2010

Maine: -20% by 2030
(light-duty VMT)

Washington: -50% by 2050
(light-duty VMT, per capita)

Equity

- Implement equity in transportation decision making.
- Examples
 - Implement Statement of Commitment
 - Build capacity to advance transportation equity
 - Develop transportation equity performance measures

Reframing the Transportation Equity Definition

Transportation
Equity Definition



What
Transportation
Equity Means to
MnDOT

- Acknowledgment
- MnDOT definition
- Statement of commitment
- List of terms

Health

- Improve health outcomes and reduce disparities in Minnesota through land use coordination, active transportation and more.
- Examples
 - Safe System approach
 - Walking and bicycling target
 - Urban heat islands tools and guidance

Continued Commitments

What has stayed the same

- Ensuring inclusive and collaborative decision making
- Providing safe and convenient movement of people and goods
- Preserving the existing system while considering strategic improvements
- Considering social, environmental and economic impacts

Statewide Multimodal Transportation Plan



MINNESOTA **GO**

SMTP Timeline and Next Steps

SMTP Timeline

- July 25 – publish draft plan for public comment
- September 7 – public hearing
- September 18 – public comment period closes
- Fall – address public comments and finalize draft for adoption
- Late Fall – anticipated adoption

Draft Available for Public Comment

Submit comments by September 18
via email, mail or at
www.MinnesotaGO.org

Thank you!

Questions and Open Discussion

Hally Turner (she/her)

Policy Planning Director

Hally.Turner@state.mn.us

www.minnesotago.org

MINNESOTA  GO

What Transportation Equity Means to MnDOT

Acknowledgment

MnDOT acknowledges the transportation system and agency decisions have underserved, excluded, harmed, and overburdened some communities. We understand some of our past decisions denied Black and Indigenous communities as well as people with disabilities the full participation of transportation benefits. These and other underserved communities have historically carried disproportionate burdens of transportation decisions.

MnDOT Definition

MnDOT is committed to creating an equitable transportation system.

Transportation equity means the benefits and burdens of transportation systems, services and spending are fair and just, which historically has not been the case. Transportation equity requires ensuring underserved communities, especially Black, Indigenous and People of Color, share in the power of decision making

Statement of Commitment

We will not transform our transportation systems, services and decision-making processes overnight, nor will we always get it right on the first try. Transportation equity is an ongoing journey of listening, learning, changing, implementing and adapting.

Everyone in our agency regardless of position or work assignment has a role to advance transportation equity. We will partner with community members, community based organizations, transportation service providers, Tribal Nations and government institutions to evolve our work and to change outcomes for our communities.