



IMAGINE²⁰₅₀

Draft 2050 Transportation Policy Plan (TPP) Update

Transportation Advisory Board

Cole Hiniker and Jed Hanson

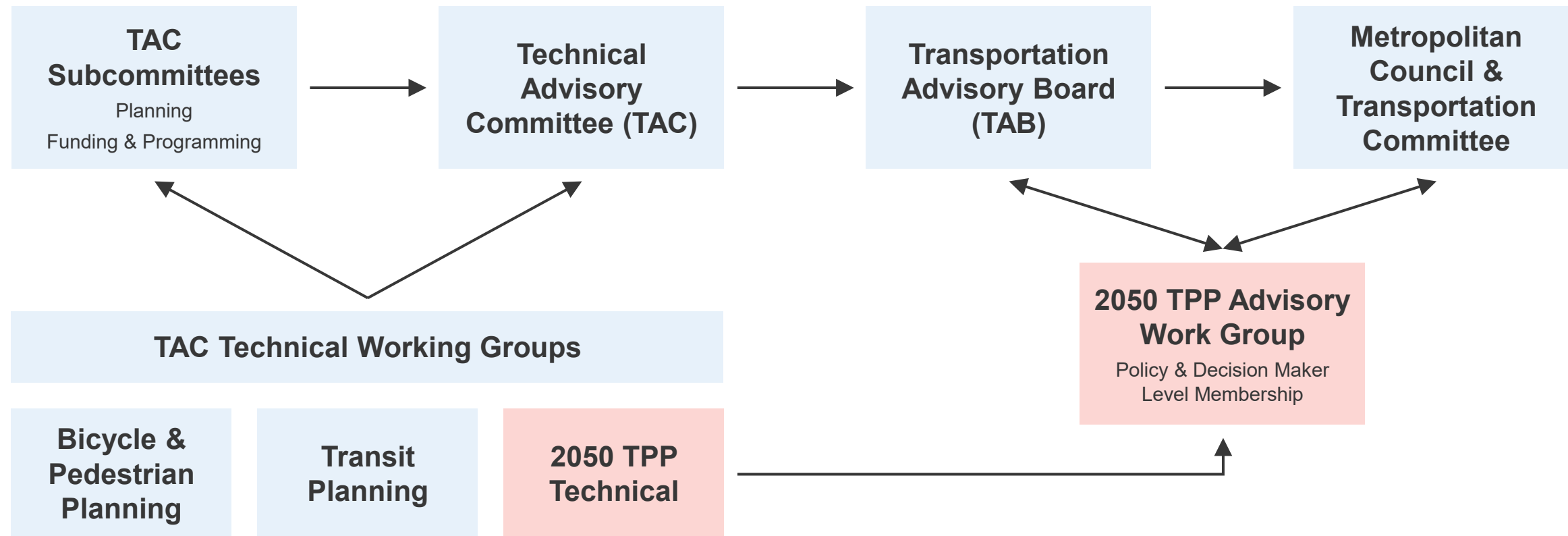
March 2024



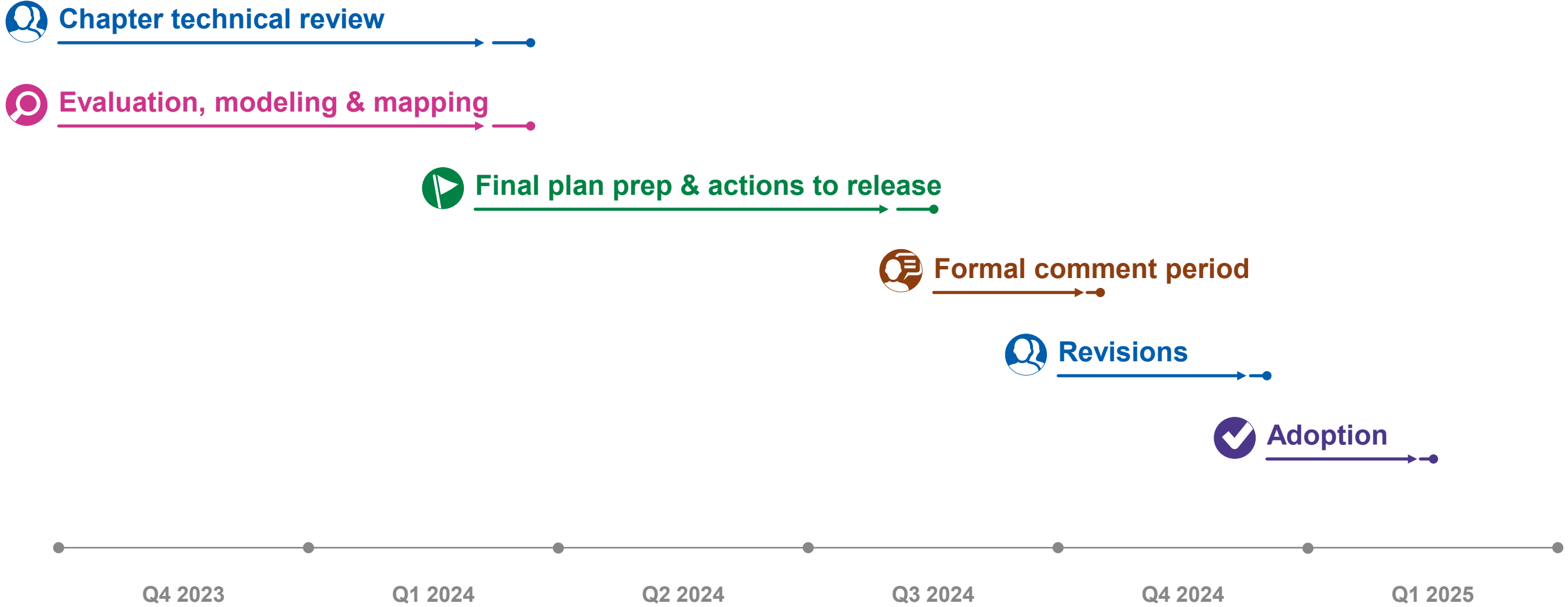
Background on Overall Process



2050 TPP Working Groups



Plan Development Schedule



Past 2050 TPP Work



2022 – 2023 Work

- [Transportation System Performance Evaluation](#)
- 10+ contributing studies and plans, for example:
 - Regional Travel Demand Management Study
 - Transportation Attitudes and Needs Assessment
 - Twin Cities Highway Mobility Needs Analysis
- [50+ listening sessions or interviews with government and community stakeholders](#)
- Draft objectives, policies, and actions
 - 8 policy development teams with external partners
 - 3 policy development workshops with external stakeholders
 - 25+ meetings
- Developed funding assumptions, incorporating 2023 legislative changes
- Work Group discussions
 - [21 Technical Advisory Working Group meetings](#)
 - [13 Advisory Work Group meetings](#)

Early Draft Chapter Technical Review Schedule

Chapter	November	December	January	February	March	April
Bicycle	TWG Review	Themes				
Pedestrian	TWG Review	Themes				
Travel Demand Management	TWG Review	Themes				
Highways		TWG Review	Themes			
Finance		TWG Review	Themes			
Transit			TWG Review	Themes		
Freight			TWG Review	Themes		
Aviation			TWG Review	Themes		
Equitable & Inclusive Goal				TWG Review	Themes	
Healthy & Safe Goal				TWG Review	Themes	
Dynamic & Resilient Goal				TWG Review	Themes	
Climate Change Goal				TWG Review	Themes	
Natural Systems Goal				TWG Review	Themes	
Policies and Actions				TWG Review	Themes	
Work Program					TWG Review	Themes

Chapters to be scheduled: Overview/Imagine 2050 Transportation Chapter, Evaluation & Performance Chapter, Misc. Appendices.

Goals and Investment Plans Content Review



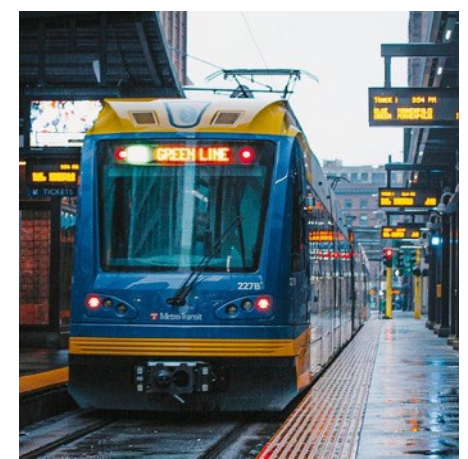
Five Goal Documents

Outline

- Goal Overview
 - TPP Objectives
 - Intersections with other Imagine 2050 Goals
 - Performance Measures (TBD)
- Transportation Context for the Goal
 - Varies
- Implementation
 - Policies & Actions
 - Investment Plan
 - Related Work by Partners
 - Work Program

How to Review

- Provide suggested edits, data sources, graphics, photos, and missing parts of the story.
- When possible, help us understand context that might be missing.
- You will see some overlap between the chapters (e.g., climate change and dynamic and resilient).
- Some placeholders still exist, and many sources not yet footnoted.



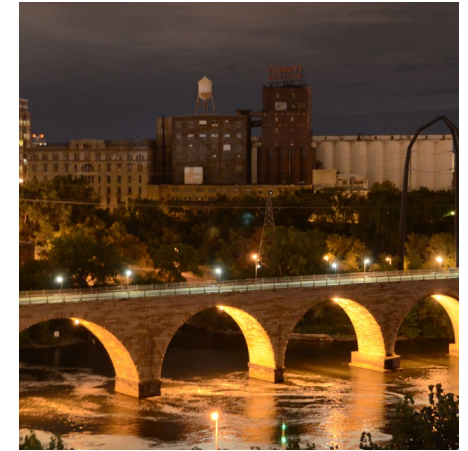
Investment Plans

Outline

- Introduction
 - Definitions
 - Roles
 - Relationship to 2050 Goals
- Existing System and Issues
- Investment Plan
 - Programs
 - List of investments
 - Planning direction
- Funding Opportunities

Technical Working Group Feedback Themes

- Context clarifications, issue framing suggestions
- Questions or suggested language about roles of different stakeholders
- Better tie language throughout the plan back to regional goals
- Suggestions to highlight local or state work that is related
- Concerns about highway mobility being in conflict with goals, negative outcomes



TAC, TAB, and Met Council Review of Goals Chapters



Sharing early draft content beyond the Technical Working Group

Five Goals Chapters & Policies and Actions

- Currently about 88 pages total broken into six separate documents.
- These drafts do not yet reflect reviews provided by the Technical Working Group or Advisory Work Group

Finance Chapter and Investment Plans

- Nine total documents totaling 211 pages
- Plan to share in April, revisions currently in progress

Remaining content will be shared in May

Depending on feedback from TAC, TAB, and Met Council, time will be reserved on agendas for any necessary policy discussion in April and May.

Chapter Review Guidance

You'll be emailed Microsoft Word copies for individual comment.

General Notes

- Send any questions you have to jed.hanson@metc.state.mn.us and cole.hiniker@metc.state.mn.us
- Response is appreciated by April 12th.
- You will see some overlap between the chapters (e.g., climate change and dynamic and resilient).
- Some placeholders still exist, and many sources not yet footnoted.

Comment Tips

- Provide suggested edits, data sources, graphics, photos, and missing parts of the story.
- Leave specific language suggestions in a comment and do not use tracked changes.
- When possible, help us understand context that might be missing.
- Please provide your comments individually.



EXAMPLE CHAPTER

2050 Transportation Policy Plan, Agency Review Draft

Introduction

Lorem ipsum dolor sit amet, consectetur adipiscing elit. Mauris ornare tellus in turpis vulputate porta. Vestibulum ac libero nec massa venenatis tincidunt lacinia at magna. Fusce vel magna eu odio sagittis auctor. Pellentesque maximus urna non nibh auctor, sit amet placerat ipsum tristique. Proin in interdum orci, malesuada feugiat sapien. Morbi luctus nisi efficitur, ornare mauris in, pretium sapien. Etiam at nunc vitae tellus dictum pellentesque. Curabitur tincidunt nisi. Praesent id viverra tempor. Nullam laoreet ipsum ut eubiae ultricies. Messae ullamcorper velit aenean sollicitudin finibus neque faucibus. Vitae dictum sapien semper. Nunc dignissim mi leo quis mauris.

System Importance

Donec mattis consequat sapien quis bibendum. Phasellus quis facilisis purus. Ut eget tristique lacus. In et ante egestas ex convallis euismod ut sit amet dolor. Etiam auctor nec purus sed mattis. Suspendisse porttitor condimentum libero id tincidunt. Integer sapien dui, viverra nec ligula ac, tristique viverra quam. Vestibulum fermentum sapien leo, vitae interdum diam semper quis. In elementum ipsum magna, nec fermentum mauris laoreet at. Etiam massa augue, blandit aliquam eleifend nec, dignissim eget tortor. Pellentesque fermentum neque id nunc vestibulum, sed faucibus metus pharetra. Aenean mauris diam, blandit ut ante eget, gravida pellentesque leo. Lorem ipsum dolor sit amet, consectetur adipiscing elit. Donec consequat quis nulla sit amet dapibus. Nam egestas non augue ut pulvinar.

Investment Direction

Nam quis dui est. Quisque vitae placerat nibh, sit amet pulvinar neque. Duis eu rutrum odio, non feugiat urna. Sed maximus auctor nunc, at iaculis nulla. Aliquam ut tincidunt dui, dignissim mollis lorem. Morbi laoreet quam in urna volutpat rhoncus. Fusce accumsan enim at volutpat tincidunt. Duis in viverra justo. Morbi quis nisi eu lacus vehicula dictum ut eu ante. Curabitur neque neque, porttitor non interdum vel, consectetur non nulla. Quisque elit quam, mollis eu orci vitae, vestibulum faucibus ante. Aenean sollicitudin sapien nec mollis ultricies. Donec sollicitudin eget lectus id lacinia. Duis vel consectetur

Hanson, Jed ...

The City of Evergreen would prefer this chapter be expanded to cover Santa sleighports and increased need for safe landing places as the region grows and clear zones near housing get developed.

October 20, 2023, 1:35 PM

Use Microsoft Word's comment feature to enter your comments at relevant areas on the document.

Hanson, Jed ...

Have we considered how design standards for chimneys influence the efficiency of gift delivery, especially for oversized gifts?

Hanson, Jed ...

The City of Evergreen sees an opportunity here to reference research on the happiness benefits the region's youth receive from on-time gift delivery. *A lack of reindeer feeding infrastructure in*

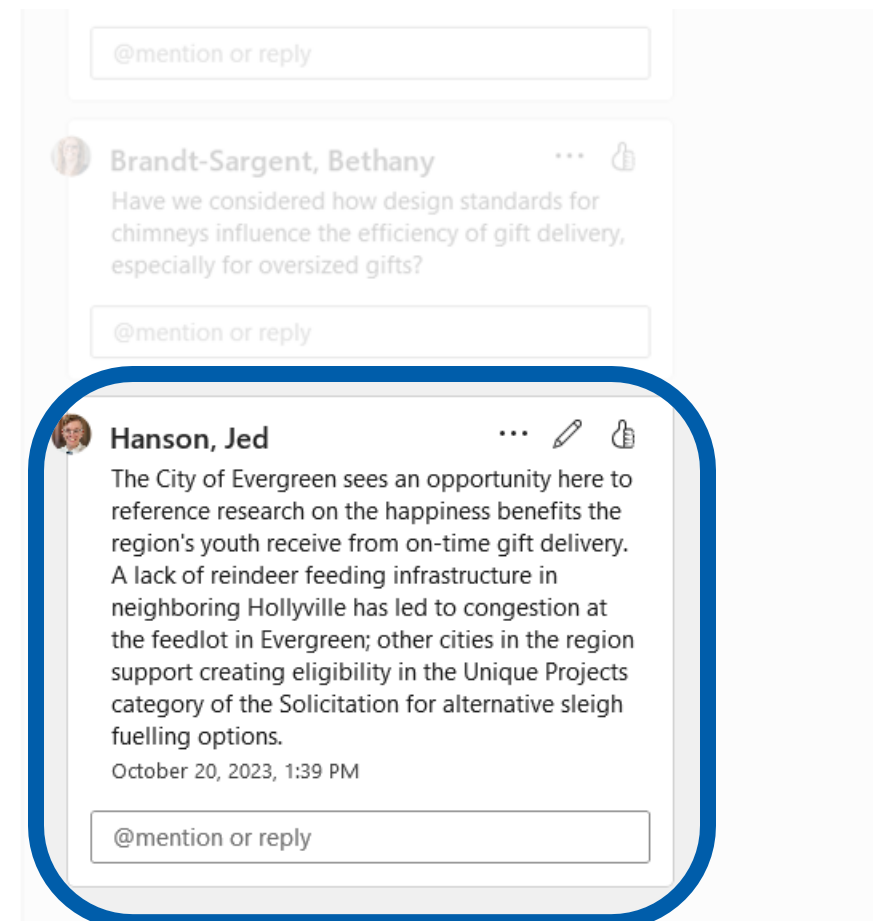
sollicitudin finibus neque faucibus ac. Donec id accumsan nulla. Cras iaculis arcu vitae tellus efficitur, vitae dictum sapien semper. Nunc aliquam, lorem ac faucibus semper, sapien risus iaculis nunc, id dignissim mi leo quis mauris. Praesent scelerisque massa eget venenatis imperdiet.

System Importance

Donec mattis consequat sapien, a suscipit massa semper interdum. Suspendisse malesuada id leo quis bibendum. Phasellus quis facilisis purus. Ut eget tristique lacus. In et ante egestas ex convallis euismod ut sit amet dolor. Etiam auctor nec purus sed mattis. Suspendisse porttitor condimentum libero id tincidunt. Lack of alternative fuelling options for sleighs has created congestion at the few reindeer feeding sites in the region. Integer sapien dui, viverra nec ligula ac, tristique viverra quam. Vestibulum fermentum sapien leo, vitae interdum diam semper quis. In elementum ipsum magna, nec fermentum

Staff are compiling comments from several copies, and consolidating multiple red-line edits is challenging.

Comments are preferred. These help us interpret the issue and incorporate it into plan language. Suggested text is welcome in comment boxes.



Open Meeting Requirements



Do not discuss these documents with other Met Council Members or Transportation Advisory Board members.

- These documents are being sent to a quorum of these bodies. We will summarize your individual feedback in future public meetings.
- This summary will not focus on individual, identified comments, but be aware the entirety of your comments are subject to disclosure by request.
- Send comments to jed.hanson@metc.state.mn.us and not to other members.

Thank you

Cole Hiniker

Senior Manager, Multimodal Planning
Cole.Hiniker@metc.state.mn.us

Jed Hanson

Senior Planner
Jed.Hanson@metc.state.mn.us

