



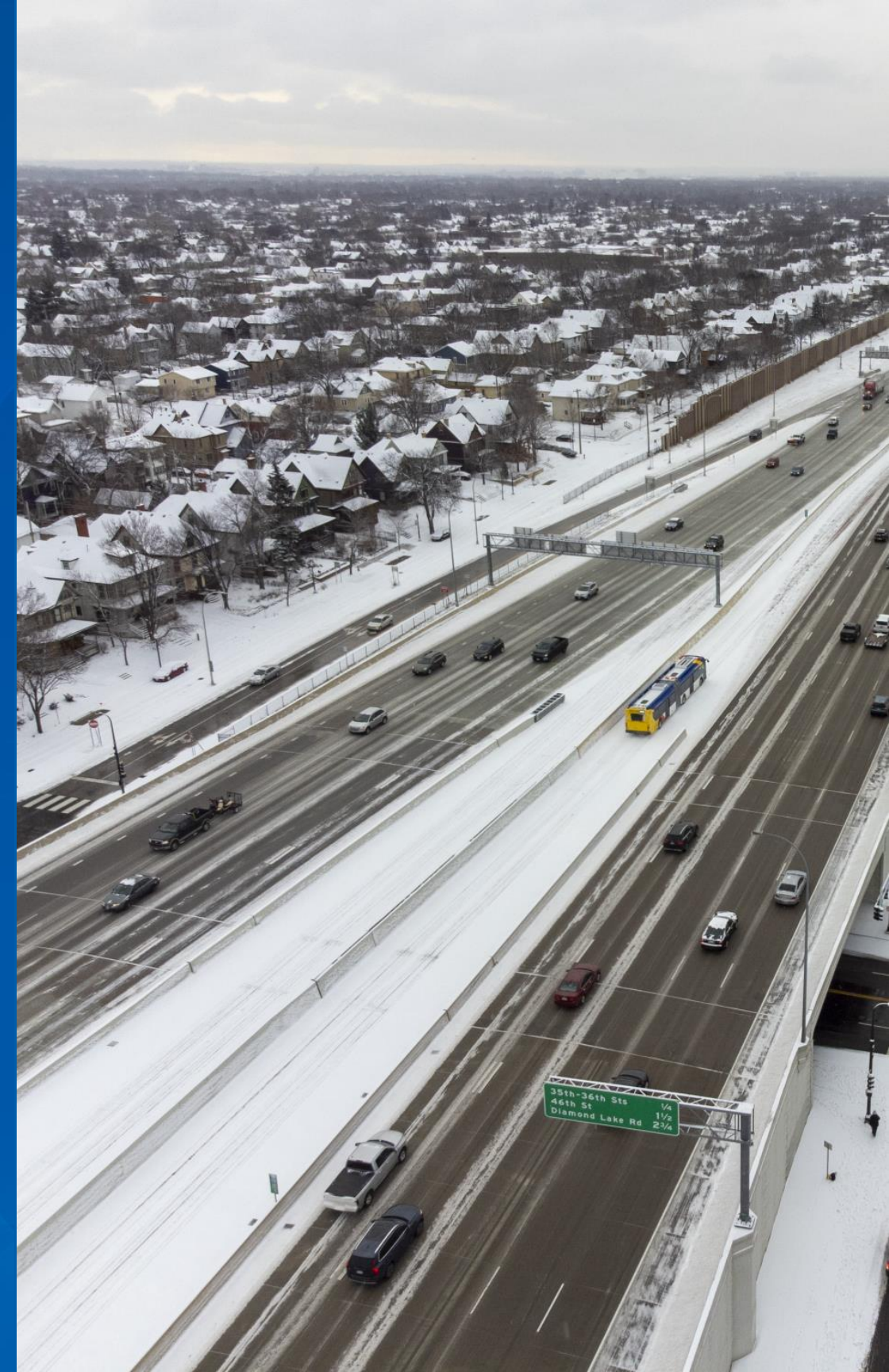
Highway System Harms, Impacts, and Mitigation Priorities Study

Haila Maze – Bolton & Menk

Abdullahi Abdulle – Humanize MN

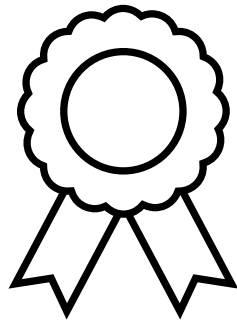
Bethany Brandt-Sargent, Amy Vennewitz – Met Council

April 16, 2025



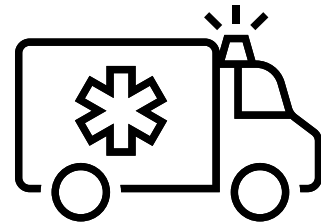
Why This Project?

Seeking new insights for better outcomes



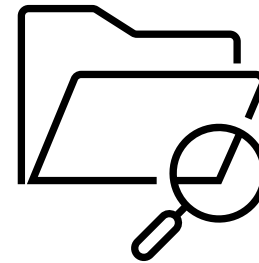
Value Our Highways

Highways connect to important destinations, catalyze growth and investment, and provide regional benefits



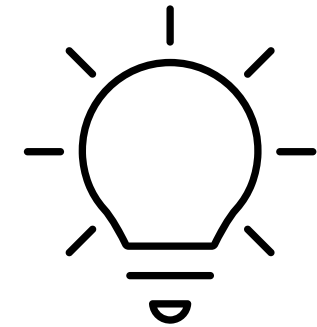
Admit to Challenges

However, highways also have major impacts and may lead to unforeseen and lasting harms to adjacent communities



Investigate Impacts

This study will give us new insights into the full impact of the regional highway system

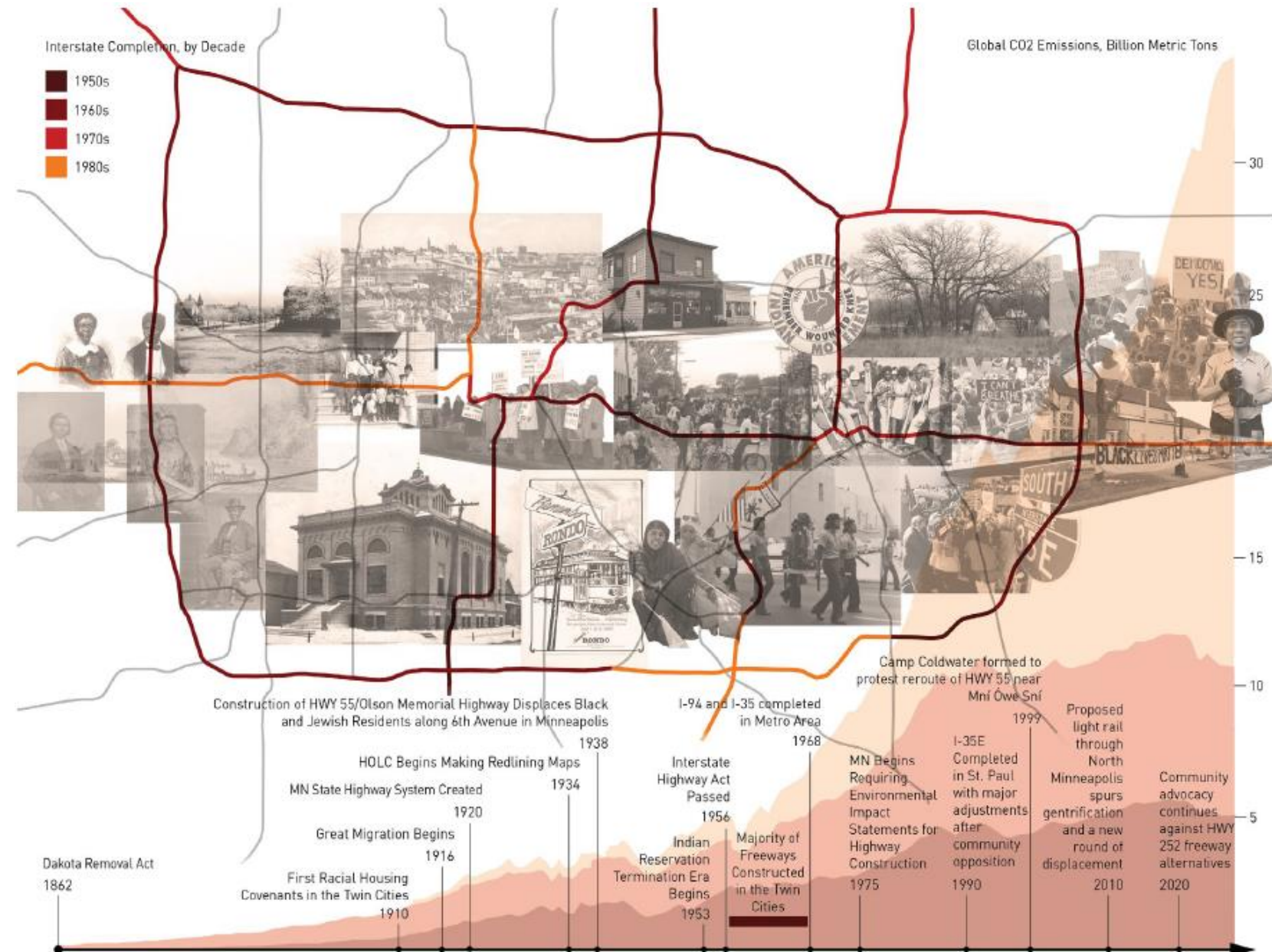


Identify Solutions

This knowledge will promote smarter future investments with expanded community benefit

Project Overview

- **Explore** the history of regional highway impacts
- **Connect** with people who were/are impacted
- **Determine** opportunities to do better going forward
- **Advance** understanding and support for change



Project Goals

Process

- Robust engagement strategy
- Representational perspectives
- Consensus building process
- Transparency and accountability
- Identifying best practices and insights
- Building support across agencies
- Visibility of findings regionally and nationally

Outcomes

- Organized framework of understanding
- Tools and guides for mitigation
- Interactive online mapping platform
- Commitments at agency levels
- Metrics and measures of success
- Reports, articles, and presentations

Project Objectives

- Convene multi-level advisory groups to inform and guide process
- Develop and implement an inclusive and effective engagement strategy
- Research highway harms at community and regional levels
- Provide a framework to organize quantitative and qualitative data
- Present data and findings as an interactive, public tool
- Assemble toolbox for mitigations and guidance for implementation

Gaining thorough
understanding of
issues and
contributing factors



Organizing
approach based
on shared goals
and agreements



Mapping
immediate and
longer-term steps
to better solutions

Organizing Concepts

Infrastructure Complexity



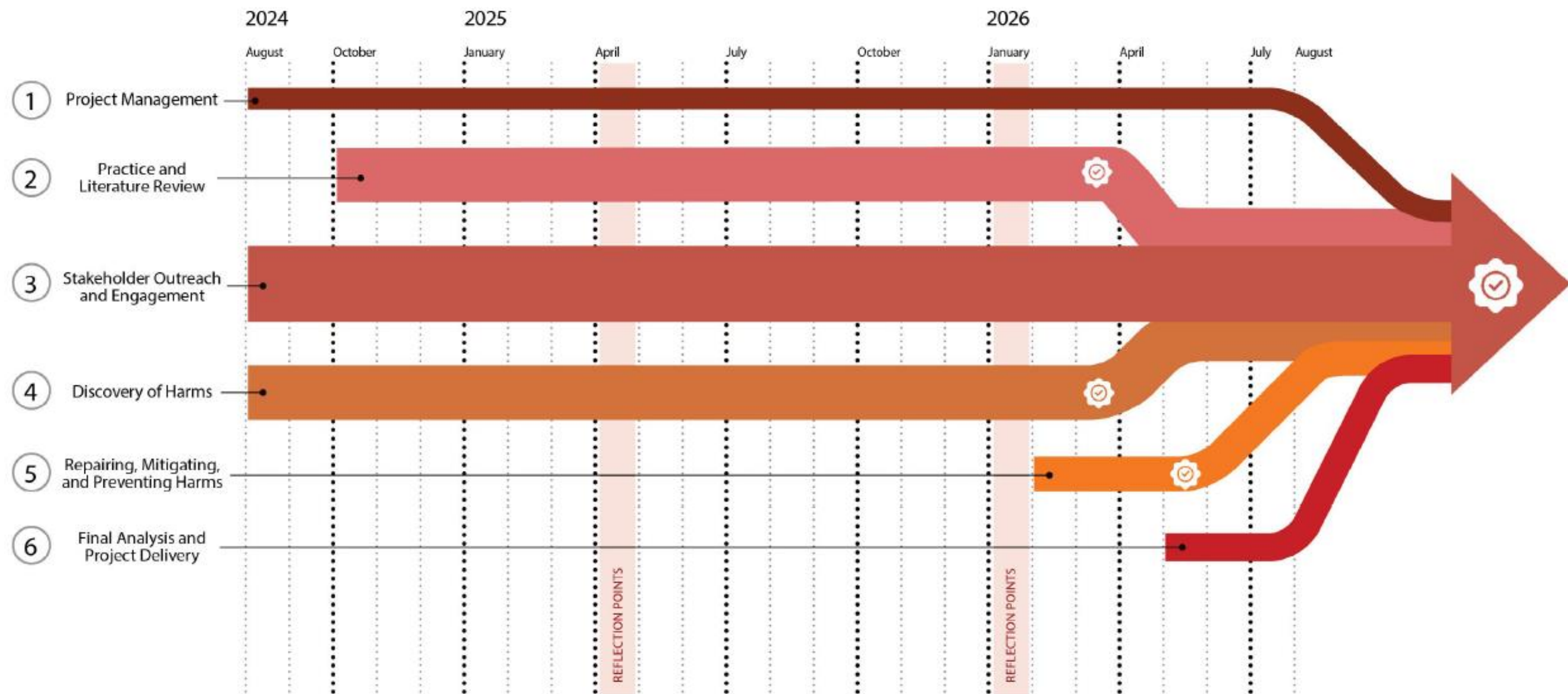
Public Health Framework



Trauma-Informed Approaches



Project Schedule



Study Approach

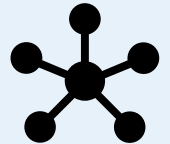
1. Literature Review
2. Harms Category Identification
3. Quantitative and Qualitative Evaluation of Each Harms Category
4. Mitigation Toolbox
5. Pilot Corridors to Test Toolbox



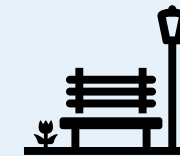
Transportation
& Traffic Safety



Housing &
Economy



Connectivity &
Access



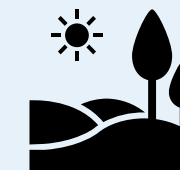
Placemaking &
Sense of Place



Accessibility
for All



Health, Air,
Noise, & Light



Environment
& Climate



Trust &
Accountability



Others
TBD

Engagement Approach

1. Internal
 - a. Project Management Team
 - b. Met Council's Committees, Presentations, and Conversations
2. Technical and Research
 - a. Technical Advisory Committee
 - b. Highway Harms Policy Group
 - c. Research and Equity Panel
3. External
 - a. Community Based Organization Outreach
 - b. Focus Group Discussions
 - c. Community Listening Sessions
 - d. Online Engagement Strategy
 - e. Inclusive Communication Methods



Advisory Groups

Advising and informing process to build buy-in and consensus

Technical Advisory Committee

- City, county, and state representatives
- Insights on impacts in different eras, contexts, and geographies
- Advise on applicability to agencies/communities
- ~10 meetings throughout project stages

Highway Harms Policy Group

- Nonprofit/CBO representatives
- Insights on impacts on general public and targeted communities
- Participants will be compensated
- ~10 meetings throughout project stages

Committee Presentations

- Metropolitan Council
- Equity Advisory Committee
- Transportation Advisory Committee
- Technical Advisory Committee
- Executive Leadership Team

Research and Equity Panel

National expertise and thought leadership



Tamika L. Butler, Esq.

tamika l. butler consulting; PhD Student, UCLA Institute of Transportation Studies

Role: National thought leader on built environment, equity, anti-racism, diversity and inclusion, organizational behavior, and change management

Experience: LADOT's Changing Lanes Study; Beyond Engagement: Equity Principles to Guide State Department of Transportation and Community Collaboration



Brian Muthyala, MD, MPH

Physician at Hennepin Healthcare; Associate Professor at the University of Minnesota Medical School, with interests in health equity, medical education

Role: Internal medicine physician and hospitalist that maintains clinical interests in hospital medicine, trauma informed care, health equity

Experience: Human Tolls: Public Histories and Community Responses to Twin Cities' Freeways



Frank Douma, JD

University of Minnesota Humphrey (CTS); MnDOT Experience

Role: Researcher on policy and legal issues related to transportation technologies, including telework, tolling, and other transportation finance tools, safety, and self-driving vehicles; experience working with MnDOT

Experience: Transportation Policy and Economic Competitiveness; Transportation Equity Training for MnDOT; In-Depth Examination of Urban Corridor Development



Jamila Porter, DrPH, MPH

de Beaumont Foundation

Role: Leader on social determinants of equity, transportation justice, multi-sector collaboration, policy evaluation, community power-building, and public health

Experience: Complete streets state laws & provisions: An analysis of legislative content and the state policy landscape, 1972–2018; Law Accommodating Nonmotorized Road Users and Pedestrian Fatalities in Florida, 1975–2013; Structural Racism and Pedestrian Safety: Measuring the Association Between Historical Redlining and Contemporary Pedestrian Fatalities Across the United States, 2010–2019



Greg Donofrio, PhD

Associate Professor and Associate Dean of Faculty, School of Architecture, College of Design, University of Minnesota; Affiliate Faculty Humphrey School of Public Affairs

Role: Teaching and research examine how communities find significance in, make use of, and preserve the historic built environment; specialties include community engagement and history of US urban planning and housing development

Experience: Co-director of A Public History of 35W research project studying the qualitative and quantitative impacts of freeway construction on black communities in South Minneapolis; co-editor and co-author of Human Tolls: Public Histories and Community Responses to Twin Cities Freeways, a book under contract with University of Minnesota Press; Owning Up: Racism and Housing in Minneapolis



Olatunji Oboi Reed

CEO of Equiticity, Chicago-based

Role: National leader in understanding and addressing racial barriers and inequities; as lead of Equiticity, has done extensive work around transportation equity and measuring/prioritizing equity

Experience: Mobility Justice in Chicago; Racially Equitable Traffic Safety



Ernest Lloyd, DPA

University of Minnesota Adjunct Faculty; A Public History of 35W

Role: Retired from a nearly 40-year career with MnDOT where he was Director and Assistant to the Commissioner for Civil Rights. He is also author of a pioneering dissertation, "How Routing an Interstate Highway Through South Minneapolis Disrupted an African American Neighborhood," Hamlin University, 2013. Born in North Carolina to a sharecropper, Dr. Lloyd's life was shaped by the Civil Rights movement. He marched for civil and social justice rights with some of the great Civil Rights leaders, including Russell Means, Rev. Dr. Ralph Abernathy and the Rev. Jesse Jackson.

Experience: Co-curator and community advisor for A Public History of 35W research project studying the qualitative and quantitative impacts of freeway construction on black communities in South Minneapolis; co-editor and co-author of Human Tolls: Public Histories and Community Responses to Twin Cities Freeways, a book under contract with University of Minnesota Press

Next Steps



- Finalize engagement plan
- Finalize research plan
- Initial committee presentations
- Schedule TAC/HHPG kickoffs
- Initiate literature review and research

Discussion Questions

**Are there any harm
categories that we
missed?
(slide 7)**

**Are there Community
Based Organizations we
should engage?**



Thank you

Haila Maze, AICP

Project Manager, Bolton & Menk
Haila.Maze@bolton-menk.com

Abdullahi Abdulle

Engagement Lead, Humanize MN
Abdullahi@humanizemn.com

Bethany Brandt-Sargent, AICP, PTP

Planning Analyst, MTS
Bethany.Brandt-Sargent@metc.state.mn.us

Amy Vennewitz

Director, MTS
Amy.Vennewitz@metc.state.mn.us

