



# Highway Expansion Impact Assessment

## Met Council TAB

**Chris Berrens;** Performance, Risk & Investment Analysis Director (Office of Transportation System Management)

**Maurice Roers;** Planning & Policy Director (Office of Sustainability & Public Health)

# How can you reduce emissions in the transportation sector?

## Fuels



$$\text{Fuel Type} + \text{Fuel Efficiency (MPG)} = \text{Vehicle Fuels}$$

## Miles



$$\text{Transportation Options (modes of travel)} + \text{Land Use Choices} = \text{Vehicle Miles Traveled (Measured per capita)}$$



# Key Milestones

**2023 Session:** Legislature requires emissions impact assessment of highway capacity expansion and creates work group to address (*Met Council: requirements for transportation emissions and VMT reduction within the Development Guide (MnStat 473.145) and Land Use Plan (MnStat 473.859)*)

**2024 Session:** Work group submits report with recommendations to effectively implement legislation. Legislature adopts recommendations and establishes Technical Advisory Committee

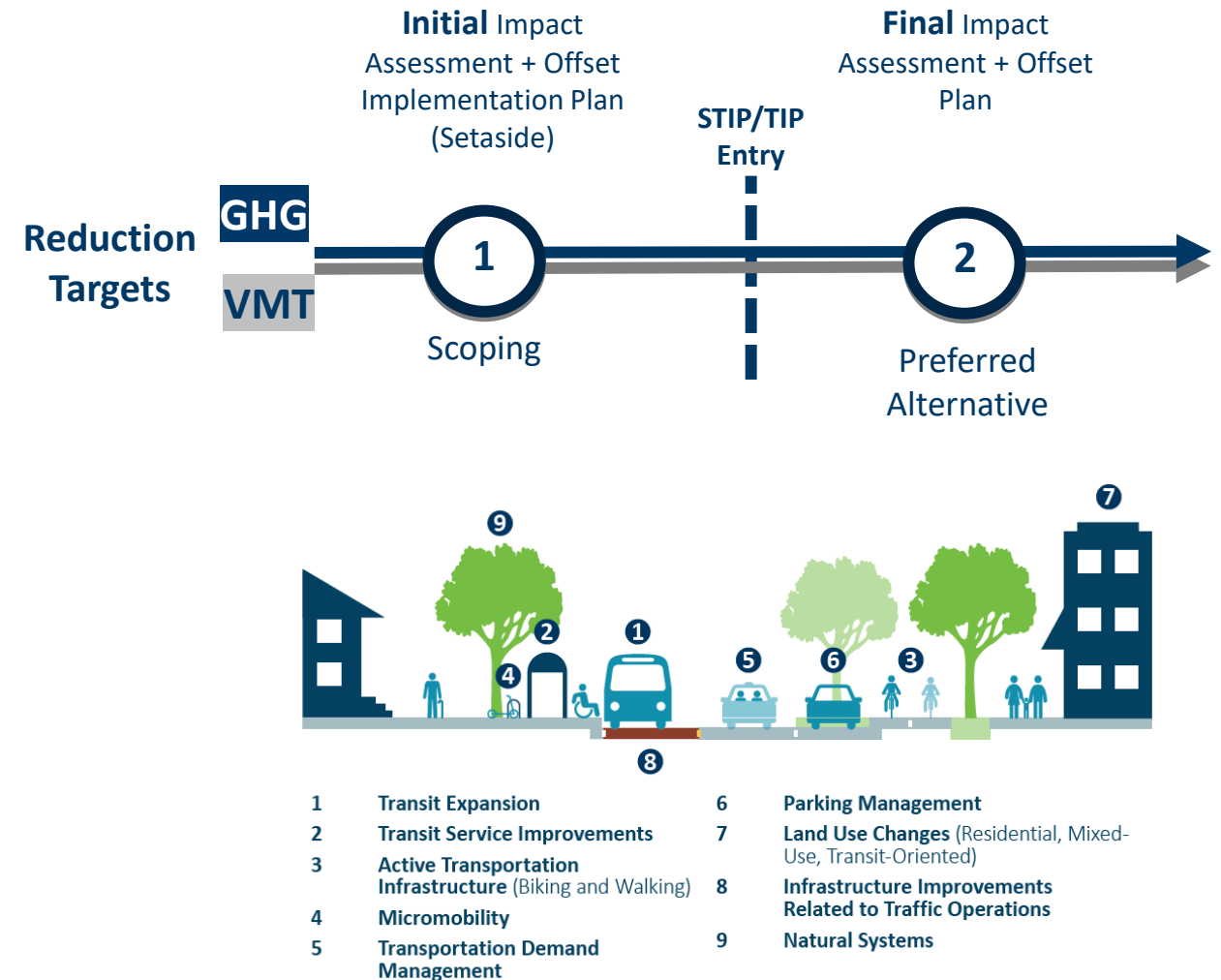
**2025:** New highway expansion projects need to assess impacts and offset before entering a STIP or TIP

**Future (2027):** Mature multimodal emissions analysis and assess regional program outcomes



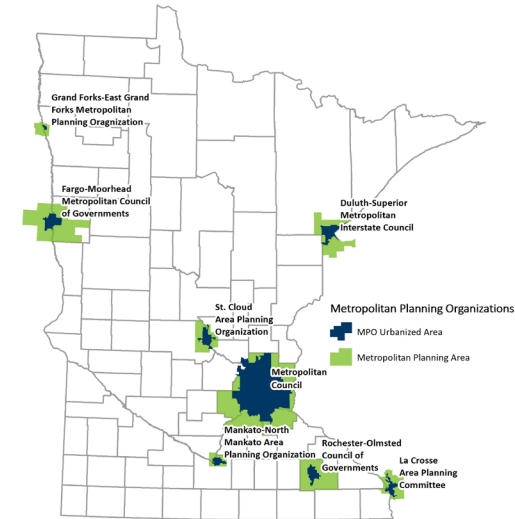
# Work completed

- Established a method for assessing the impact of expansion projects
- Agreed methods to identify offsets for expected impacts of projects
- Created supporting procedures and tools.



# Who is responsible for expansion project assessments?

- **Within metropolitan planning areas:** the Metropolitan Planning Organization must assess prior to including a project in their Transportation Improvement Program (TIP)
- **Outside of metropolitan areas:** MnDOT must assess prior to including a project in the State Transportation Improvement Program (STIP)
- All assessments are reviewed and validated by the Technical Advisory Committee



## Technical Advisory Committee

(established by the legislature)

Department of Transportation - **Jon Solberg**  
Metropolitan Council - **Jonathan Ehrlich**  
County - **Lyndon Robjert**, Carver County  
City - **Marcus Culver**, City of Brooklyn Park  
Pollution Control Agency - **Kate Knuth**  
U of M: Center for Transportation Studies – **Eric Lind**  
MPO from Greater Minnesota - **Stephanie Halford**  
Active transportation - **Mitzi Alex**, Toole Design  
National expert - **Robert Noland**, University of Rutgers

# Work in Progress & Opportunities

- Coordination with Met Council on review and administration of assessments
  - Location & timing of offsets
  - Alignment of emissions monitoring
- Continuous improvement of methods and expanding supporting background materials
- Creating a method for program (portfolio) analysis
- Integrating land use decision making with transportation investments



# Frequently Asked Questions

Q: Which projects are "grandfathered" in?

A: In STIP prior to 2025 or with an approved layout.

Q: When can offsets be included in an offset plan?

A: Projects from 2025 onward count, need to demonstrate a connection.

Q: Where can offsets be implemented?

A: Local priority, best within the community(ies) for the project.

Q: Who assesses impacts and identifies offset plans?

A: Met Council conducts assessment, Minnesota emissions TAC validates, Commissioner agrees.



**Christopher Berrens | Program Director**  
Chris.berrens@state.mn.us

**Maurice Roers | Sustainability Office Policy Director**  
Maurice.roers@state.mn.us

**GHG Reduction Legislation**  
[dot.state.mn.us/sustainability/ghg-legislation.html](https://dot.state.mn.us/sustainability/ghg-legislation.html)