

# RBTN Administrative Changes for Regional Solicitation

TAC Planning

November 14, 2019



# RBTN Background

## RBTN first established in TPP 2014 Update

- First included in scoring criteria for 2014 Regional Solicitation
- 2016 Solicitation included RBTN with minor changes
- TAB adopted prelim. TPP additions and adjustments for 2018 Solicitation
- Administrative changes described today for 2020 Solicitation

# RBTN Admin. Changes

## Process:

- Notice for RBTN change requests distributed in April
- Three possible administrative change types considered
  1. Designation of alignments in established corridors
  2. Minor extensions of corridors or alignments
  3. Minor shifts (i.e., lateral/rotational) to alignments or corridors

# RBTN Admin. Changes

Change requests received from three agencies in these categories:

- Alignment designation (1)
- Minor corridor extension of ½-mile or less (1)
- Alignment extensions of ½-mile or less (2)
- Minor corridor centerline shifts (2)
- Minor alignment shift (1)
- Alignment corrections (4)

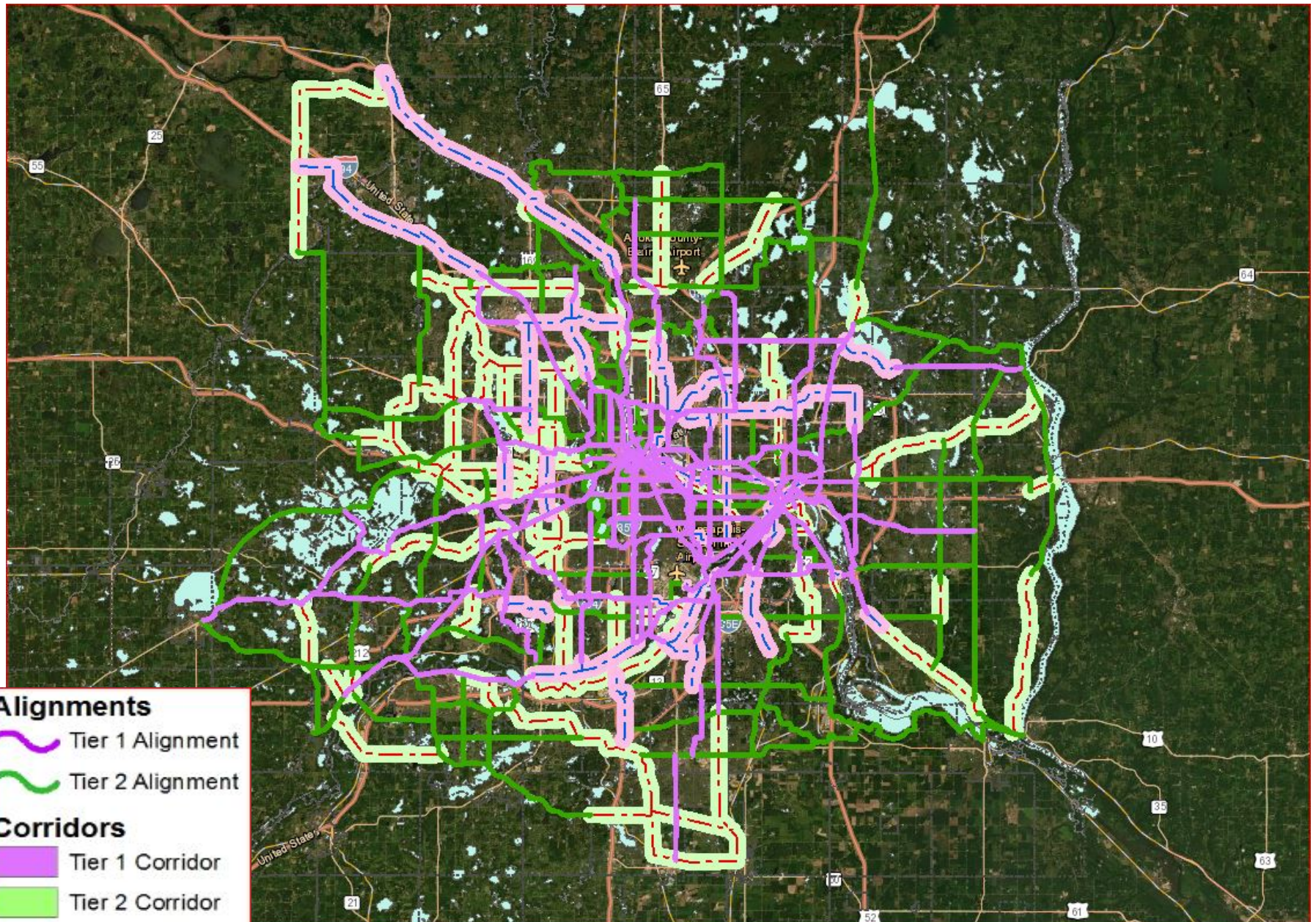
# RBTN Admin. Changes

(slide added as per TAC Planning)

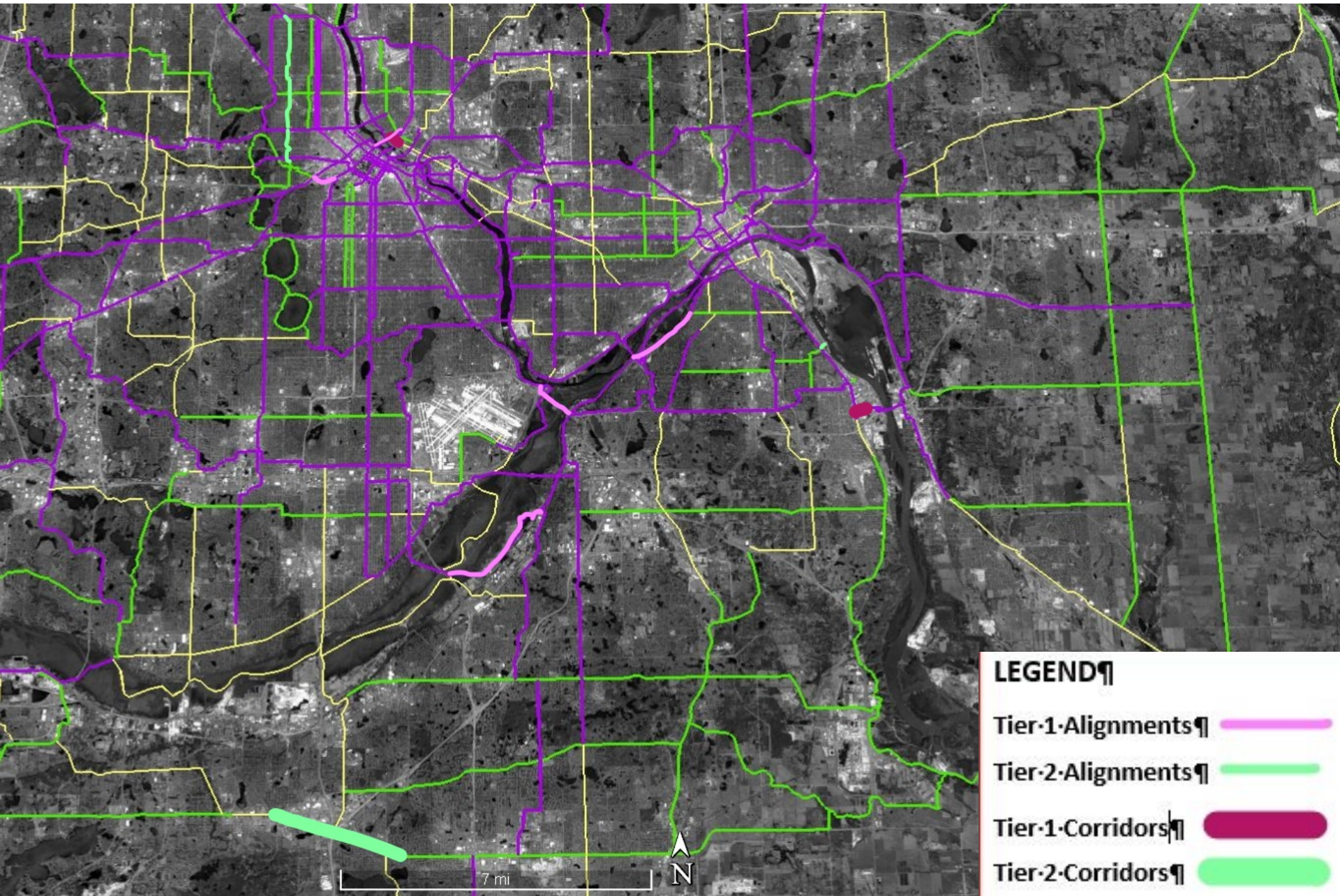
Change requests received that did not qualify for consideration based on stated administrative change types distributed:

- Washington County: proposed Gold Line BRT parallel bikeway as new RBTN Tier 1 alignment
- Three Rivers Park District: proposed 3 alignment changes & 1 new RBTN corridor

# RBTN in TPP 2018 Update



# RBTN Administrative Changes



# RBTN Changes

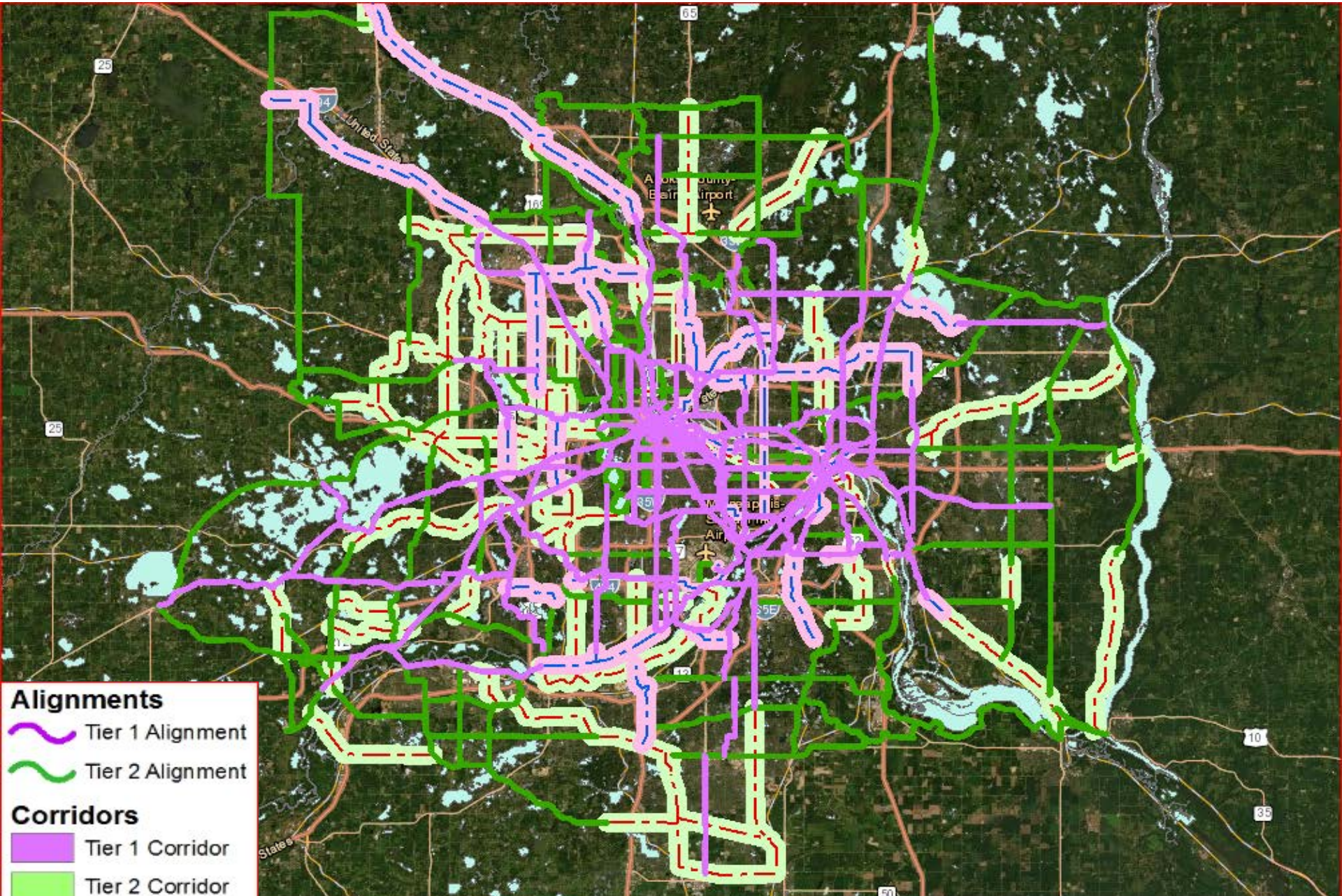
Agency	Change Type	Change Made
Minneapolis	Corridor extension	Extend existing corridor on SE Univ. Ave approx. 0.4 mi to NW
Minneapolis	Alignment extension	Extend alignment ½- mi connecting Hennepin Ave to Cedar Lake Trail via Dunwoody Ave
Minneapolis	Alignment extension	Extend alignments on NE 1st/Hennepin Ave one-way pair to Central Ave
Minneapolis	Alignment shift	Shift alignment 1 block from Penn Ave to Queen Ave
Minneapolis	Correction	Include NE 1st Ave/Hennepin Ave (north bridge) as parallel WB paired alignment



# RBTN Changes

Agency	Change Type	Change Made
Dakota County	Corridor shift	Shift Tier 2 corridor near Burnsville Ctr approx. 1/4-mi N to include CSAH 42
Dakota County	Alignment designation/ext.	Designate planned Big River regional trail addition as Tier 1 alignment
Dakota County	Correction	Correct for missing Tier 1 alignment across TH 55 Mendota Bridge
Dakota County	Correction	Move TH 13 Tier 1 align. to correct location above Miss. River bluff
South St Paul	Correction	Extend Tier 2 align. ~ 0.1 mi east to connect to Miss. River Regional Trail
South St Paul	Corridor shift	Shift Tier 1 corridor 0.2 mi south to include Armour & Villaume Avenues

# RBTN Map with Changes— Nov 2019



# TAC Planning

## November 14, 2019

RBTN on-line interaction map:  
<https://tinyurl.com/yynrshmv>

Steven Elmer, AICP  
Metropolitan Council

[Steven.Elmer@metc.state.mn.us](mailto:Steven.Elmer@metc.state.mn.us)

651-602-1756

