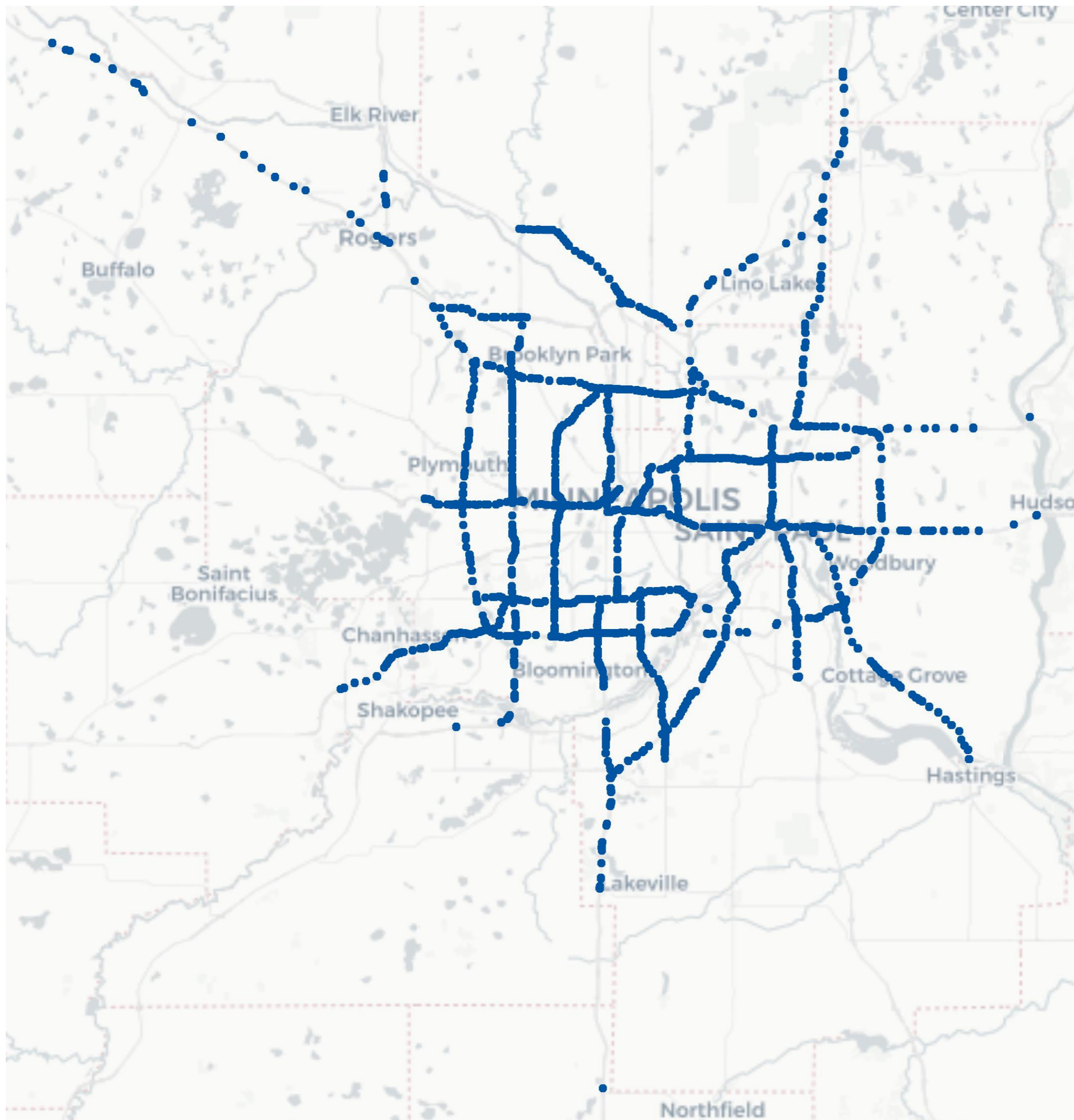


Ashley Asmus and Jonathan Ehrlich, Metropolitan Transportation Services  
ashley.asmus@metc.state.mn.us

# COVID-19 Travel Trends Update

Technical Advisory Committee | October 7, 2020



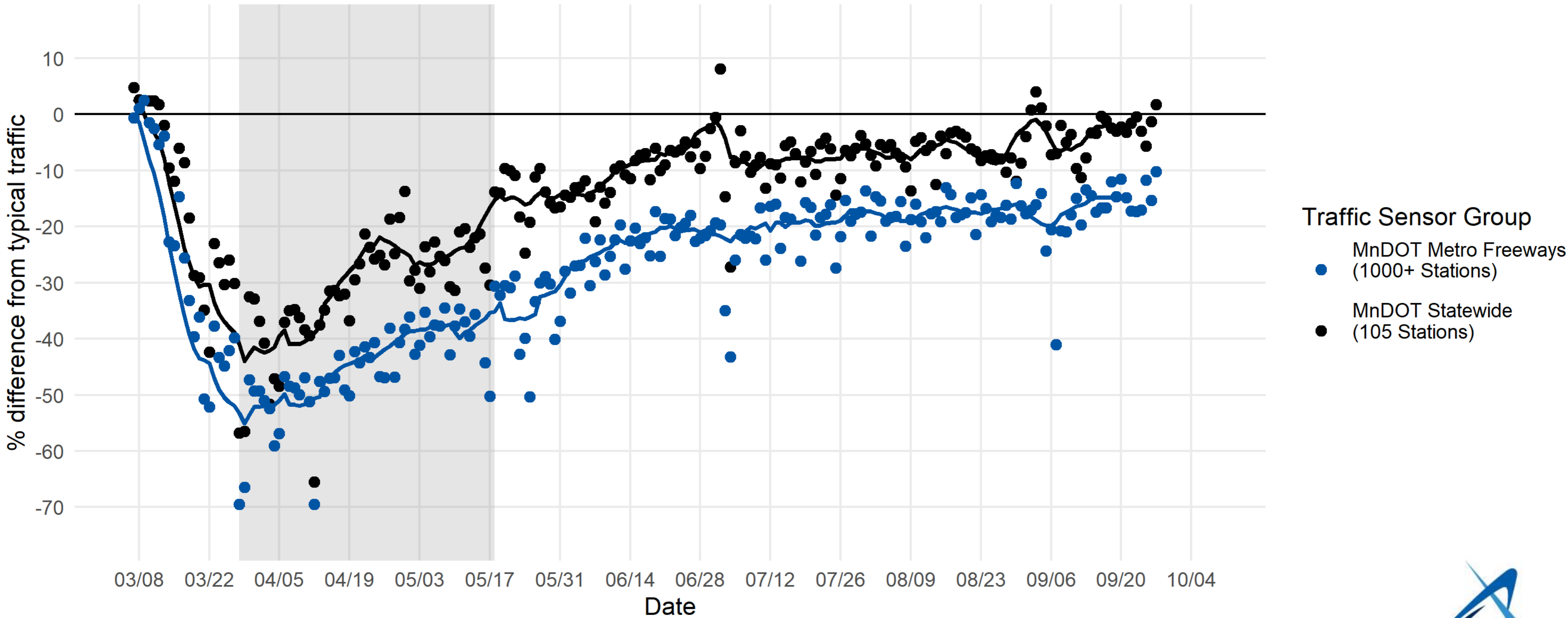


# Traffic sensors used in analysis

- 2000+ MnDOT traffic nodes, spread across 26 corridors
- Each node = one or many individual sensors
- For 2020 alone, 14.6 million rows of hourly data for 2,411 nodes
- Used 2018 + 2019 data to estimate a “typical” volume

<http://metrotransitmn.shinyapps.io/covid-traffic-trends/>

# Traffic trends over time

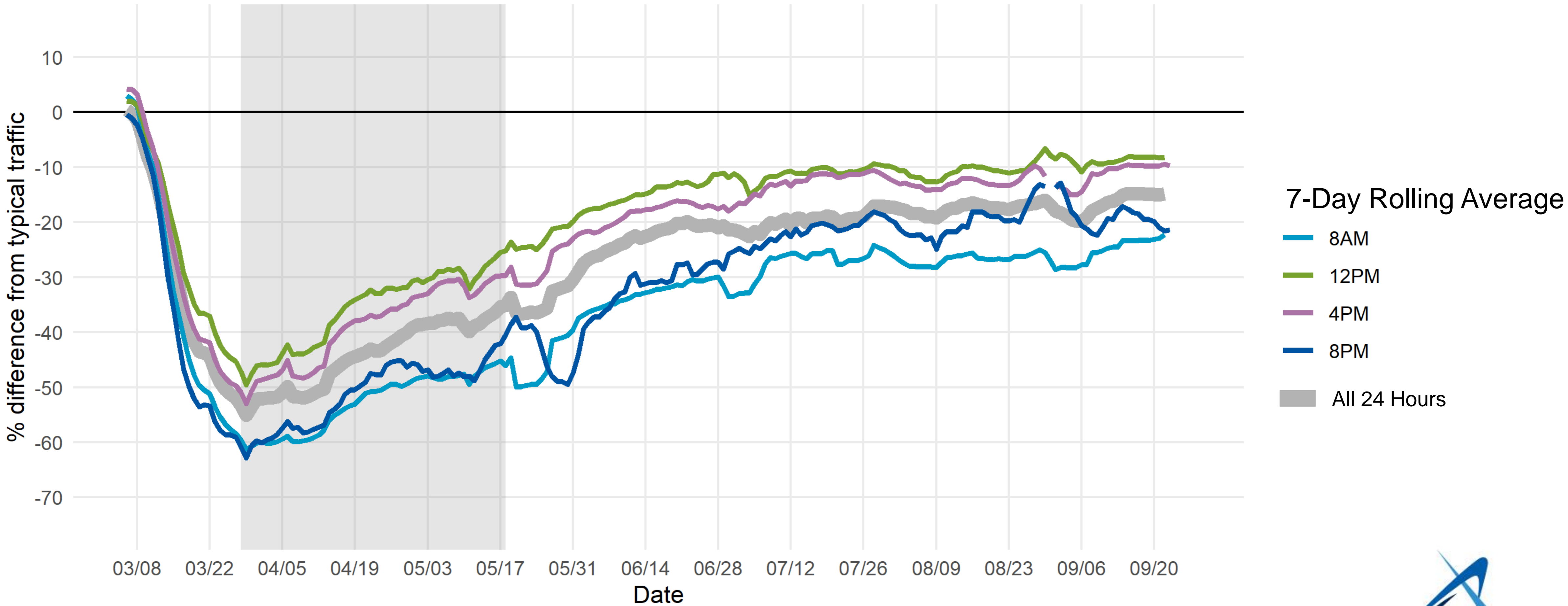


Traffic Sensor Group

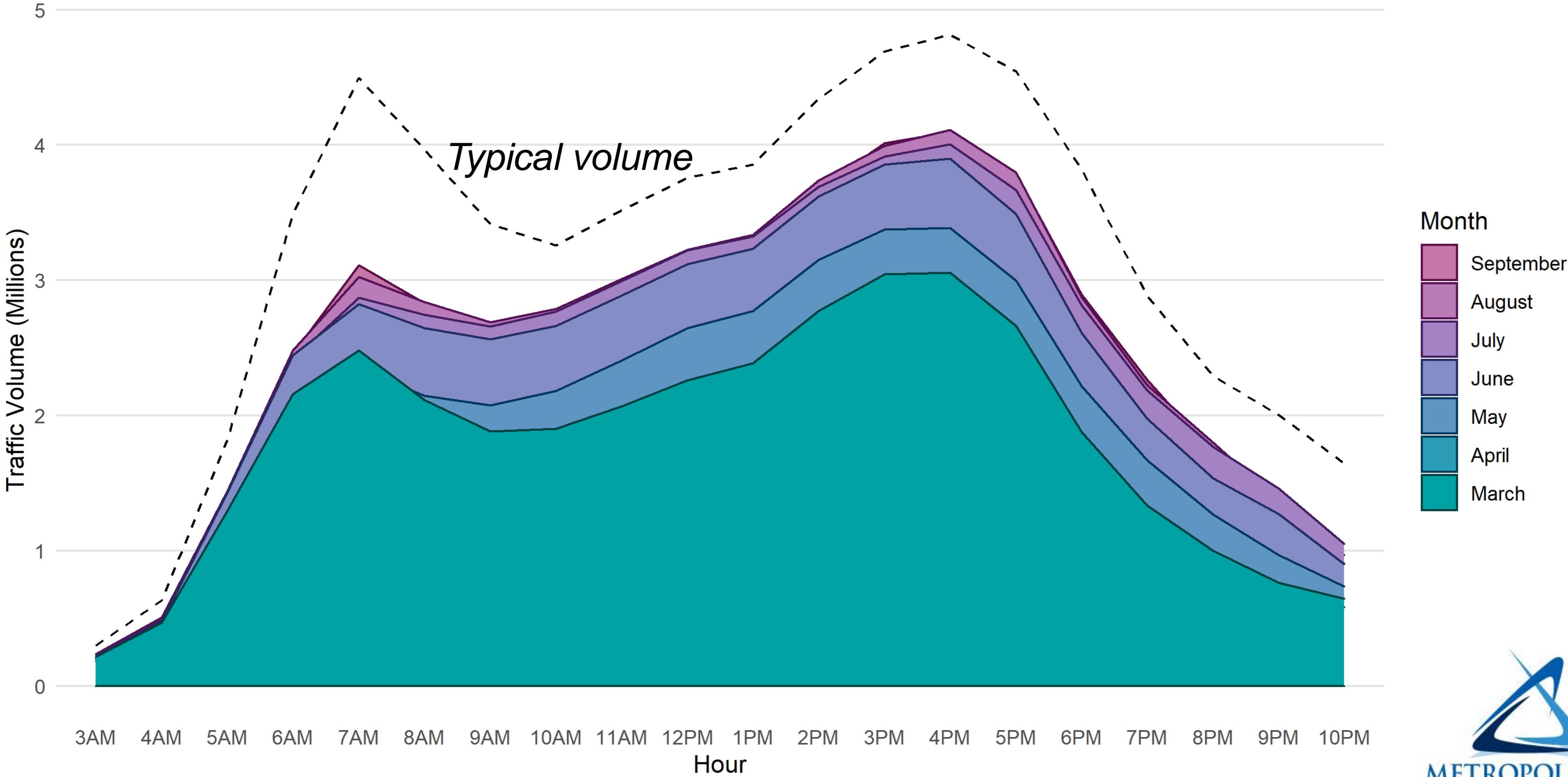
- MnDOT Metro Freeways (1000+ Stations)
- MnDOT Statewide (105 Stations)



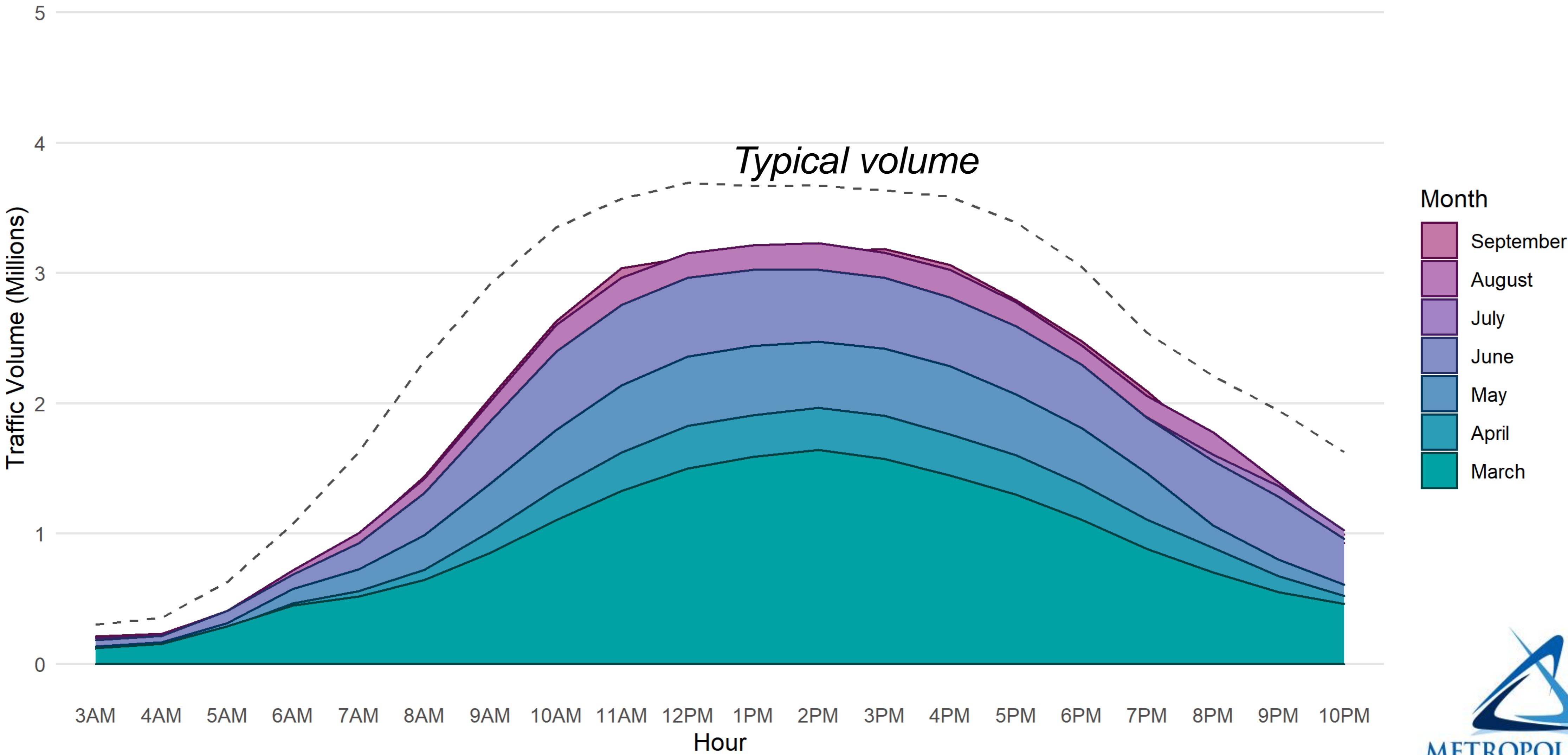
# Metro freeway traffic trends, by hour



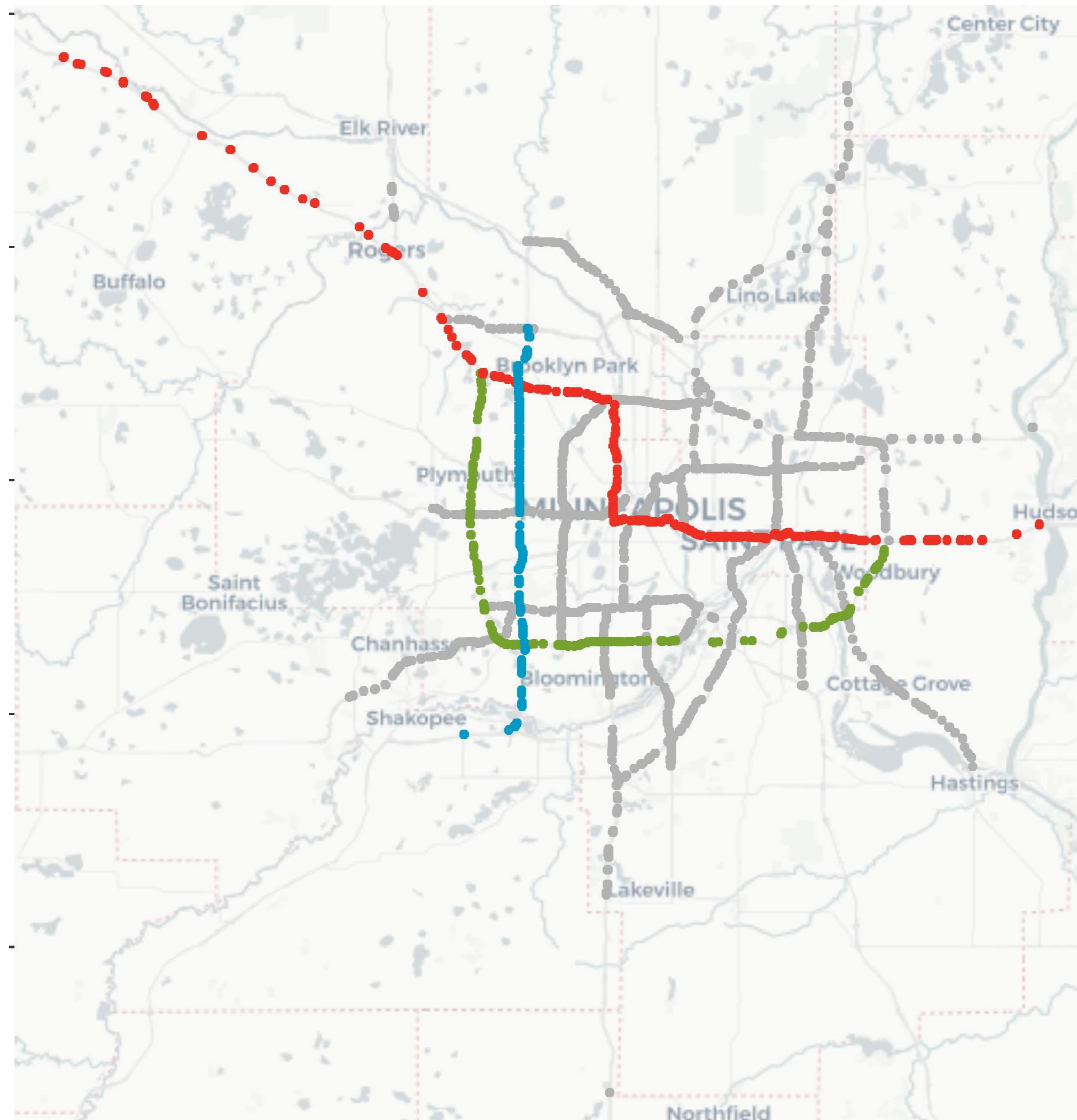
# Metro freeway traffic volumes: Monday-Friday



# Metro freeway traffic volumes: Saturday+Sunday



# Traffic sensors on selected corridors



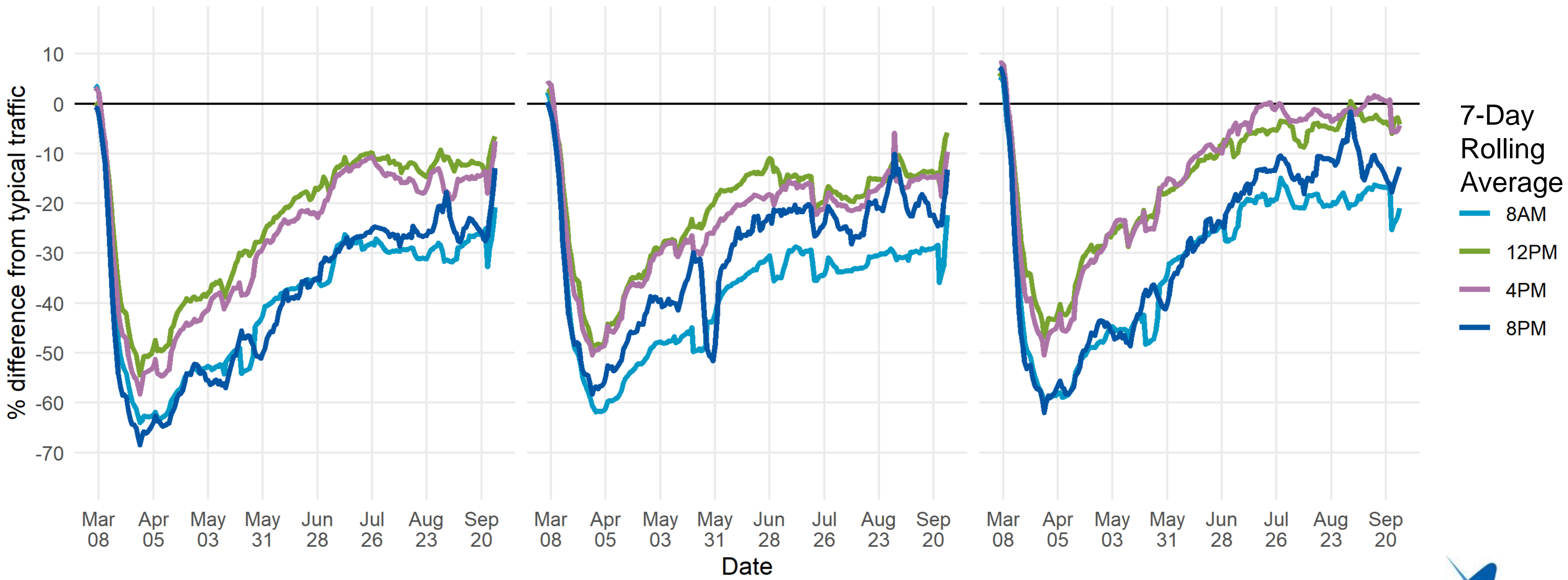
- U.S. 169 (201 nodes)
- I-94 (284 nodes)
- I-494 (234 nodes)

# Metro freeway traffic trends by corridor

I-494

I-94

U.S. 169





# Next Steps

- Further analysis of Covid-19 survey data
- Better understand what types of trips are occurring on the freeway system, by time of day
- Traffic declines on freeways vs. local system
- Examine direct & indirect relationship of teleworking and other types of travel demand changes with congestion
- What is of interest to TAC?