

2026 Unified Planning Work Program



August 2025

metro council.org

Unified Planning Work Program (UPWP)



Purpose

- Describes all the Council's MPO transportation-related planning activities for the upcoming year paid for by federal funds
- Reflects the transportation planning priorities and goals expressed in the Transportation Policy Plan
- Addresses issues/concerns expressed by our state and local planning partners
- Describes planning work categories and identifies expected products, including consultant planning work
- Serves as an application for federal transportation planning funding

Planning Activity Categories

Organized by five major activities:

- A. Planning and Programming Process
- B. Modal System Planning
- C. Long-Range System Planning
- D. Travel Research and Modeling
- E. Short-Range Planning and Performance Monitoring

Each activity includes:

- Staff time/cost
- Consultant expenditures
- Tasks and purpose
- Major products

Activity A. Planning & Programming Processes		2026 Total
Consultant Studies		\$330,000
Regional Solicitation Evaluation		\$90,000
Community Assessment & Engagement Guide		\$140,000
Outreach & Engagement Services for Transportation Studies		\$100,000
Operating Costs		\$2,863,480
Staff Weeks		488 Weeks
Salary & Benefit Cost		\$1,582,421
Overhead & Expenses		\$1,281,059
Activity A Subtotal		\$3,193,480

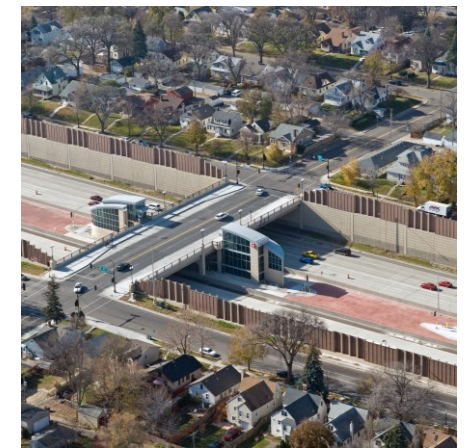
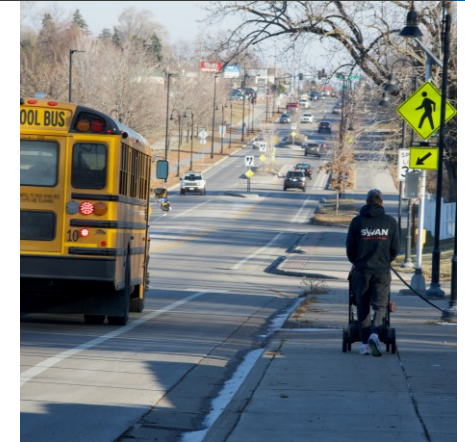
Complete Streets

MPOs must allocate at least 2.5% of budget to Complete Streets activities

- Per federal law, “the planning, scoping, design, implementation, operation, and maintenance of roads in order to reasonably address the safety and accessibility needs of people of all ages and abilities using the transportation system”

Related tasks identified:

- A-3: Regional Solicitation
- B-1: Highway Planning
- B-2: Freight Planning
- B-3: Transit Planning
- B-4: Bicycle and Pedestrian Planning
- *B-5: Complete Streets*
- C-1: Transportation Policy Plan
- C-2: Transportation and Land Use Planning
- E-1: Congestion Management Process



Draft 2026 UPWP Budget

Task	Staff Weeks	Salary & Benefit Cost	Consultant Study Cost	Overhead & Expenses	Total Cost
A. Planning & Programming Process	488	\$1,582,421	\$330,000	\$1,281,059	\$3,193,480
B. Modal System Planning	403	\$1,299,852	\$1,210,000	\$903,393	\$3,413,245
C. Long-Range System Planning	342	\$1,066,860	\$75,000	\$750,336	\$1,892,186
D. Research & Travel Forecasting	280	\$831,947	\$365,000	\$589,134	\$1,786,081
E. Short-Range Planning & Monitoring	146	\$436,469	\$100,000	\$302,604	\$839,073
Eligible for Federal Funding	1,657	\$5,217,541	\$2,080,000	\$3,826,525	\$11,124,064

Regional Work Program



Purpose

- The Regional Work Program contains transportation planning tasks and studies that are fully regionally funded
- These studies and tasks are not eligible for federal funds and/or are activities required under state legislation
- In 2026 the Regional Work Program includes:
 - Right-of-Way Acquisition Loan Fund (RALF) activities
 - Aviation planning activities
 - Travel Demand Management Program
 - Electric Vehicle related studies
 - Midtown Greenway Bicycle and Pedestrian Trail Expansion Planning Project
 - 2050 Comprehensive Planning Technical Assistance on Climate Mitigation Strategies
 - Community Considerations and Equity Framework Tool training

Next Steps

Process

- ~~July 10: TAC Planning action~~
- ~~July 11: Release for public comment~~
- ~~August 1: Comment period closes~~
- **August 6: TAC**
- **August 20: TAB (comment report available)**
- **September 8: Transportation Committee**
- **September 24: Met Council adoption**

Recommended motion

That the TAC Planning Committee:

- Recommend that the 2026 UPWP be released for public review and comment.
- Recommend that TAB recommend that the Council adopt the 2026 Unified Planning Work Program (UPWP).



Thank you

Bethany Brandt-Sargent

Planning Analyst, MTS Planning

bethany.brandt-sargent@metc.state.mn.us

Jed Hanson

Senior Planner, MTS Planning

jed.hanson@metc.state.mn.us

Amy Vennewitz

Director, Transportation Planning

amy.vennewitz@metc.state.mn.us

